

Elver-1 EcoScope Service RT 500MD

Format: ECO-SON-GVR_500MD_RT

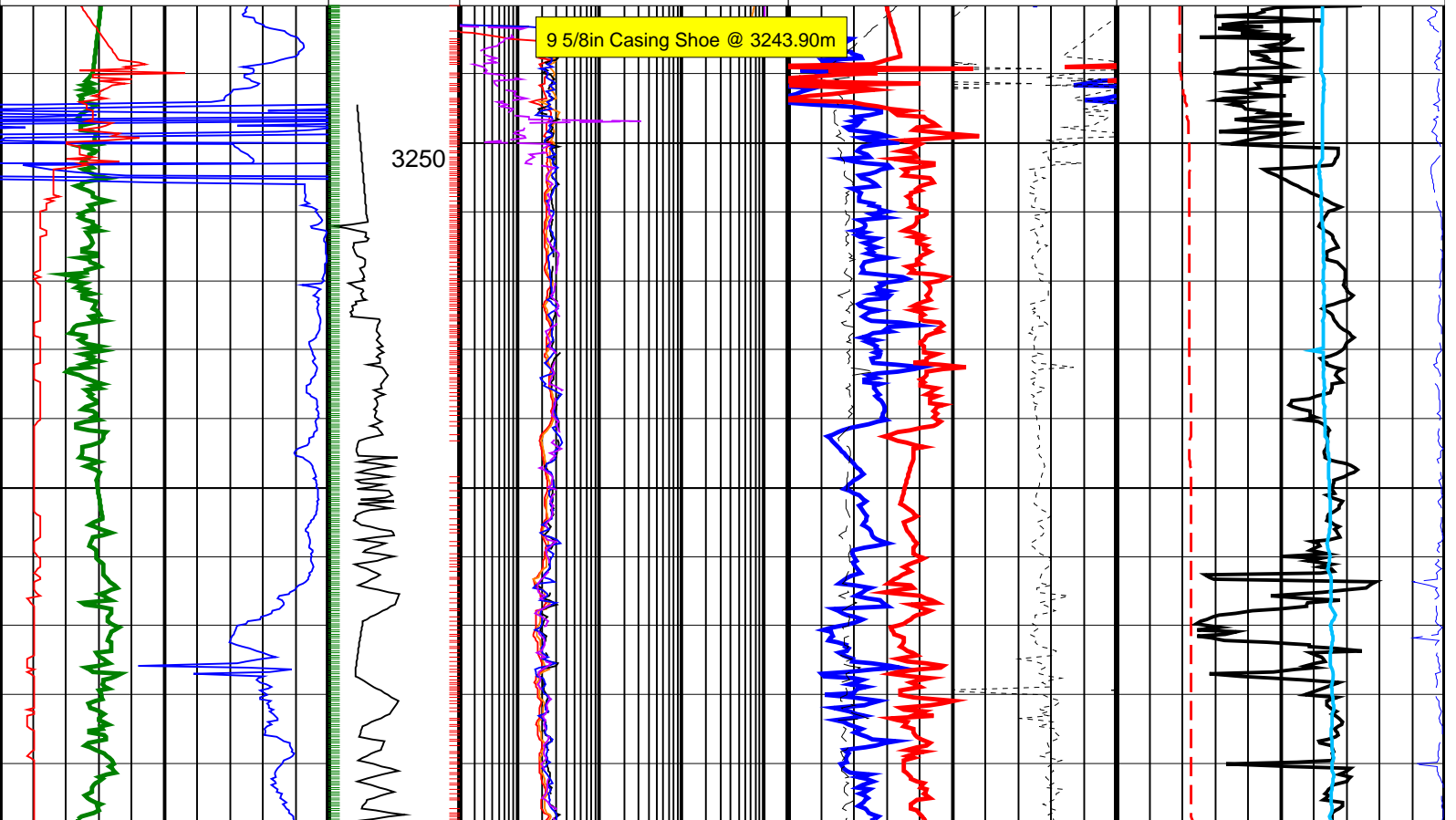
Vertical Scale: 1:500

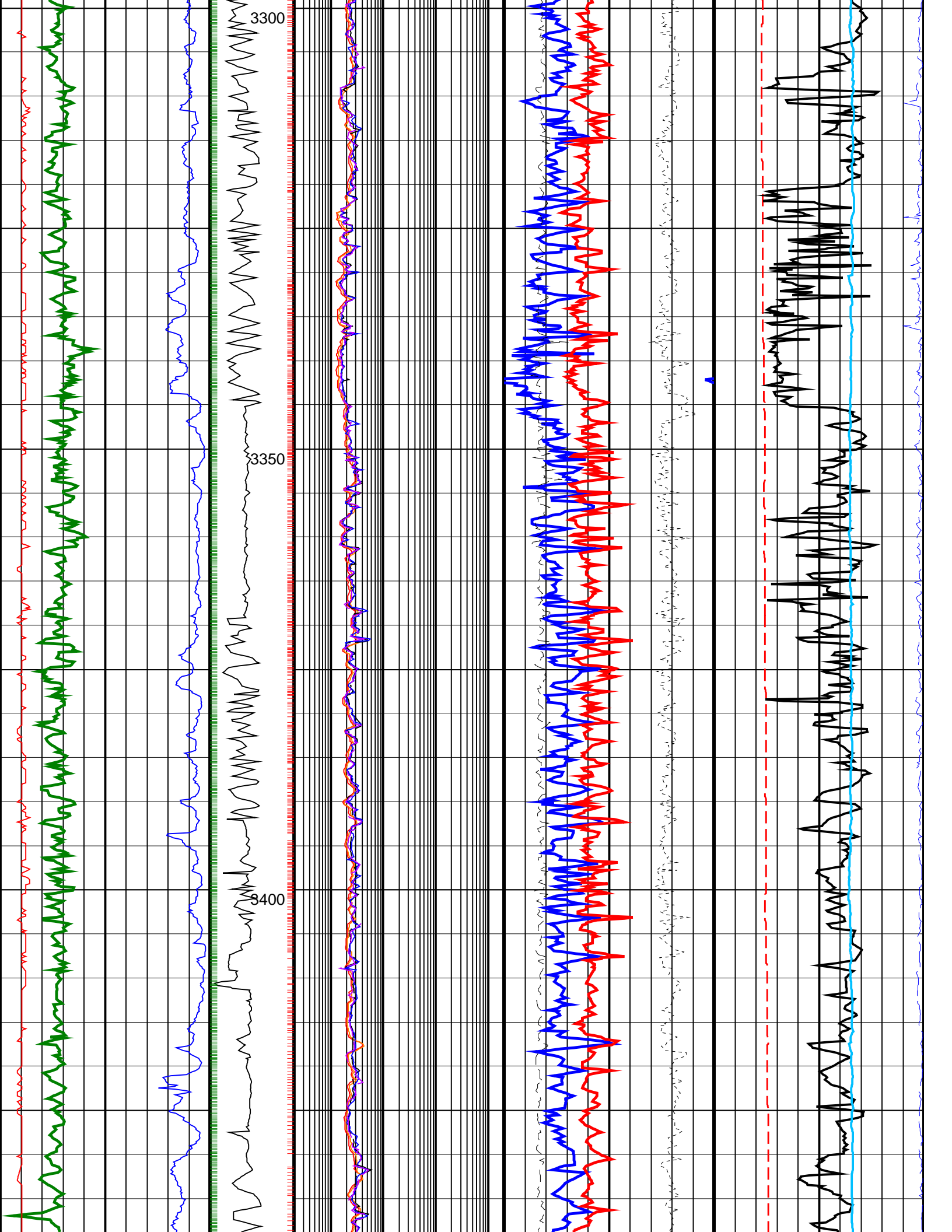
Graphics File Created: 06-Jan-2009 08:36

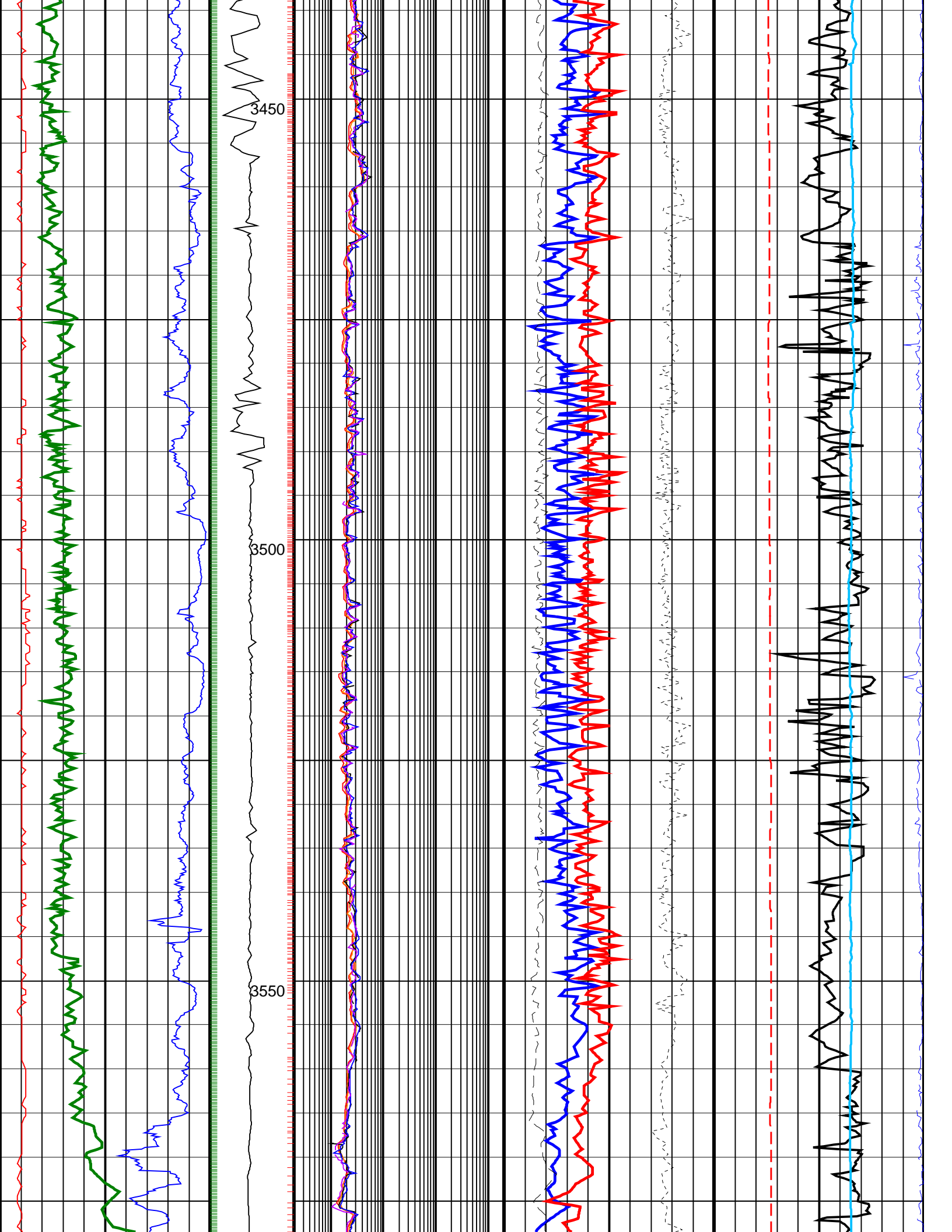
PIP SUMMARY

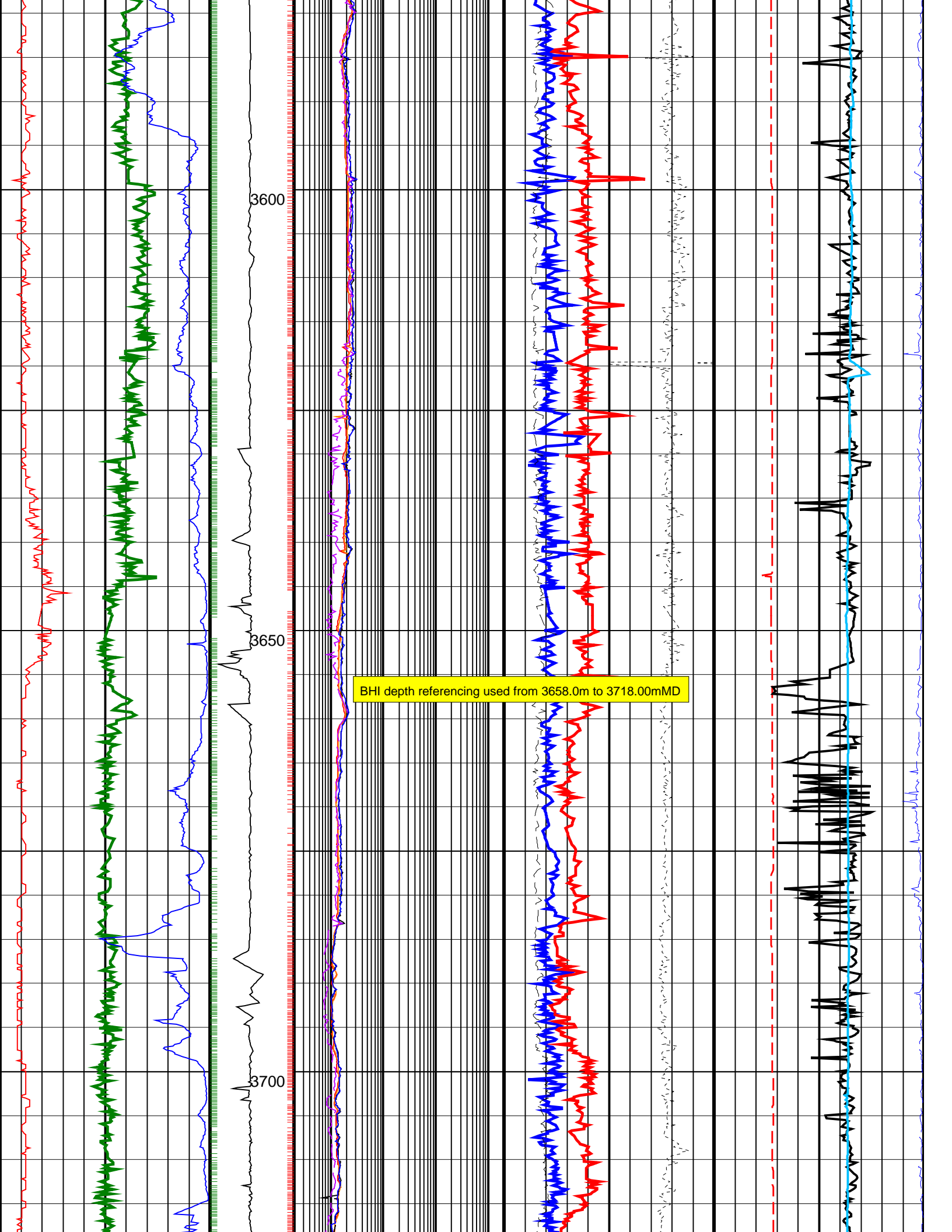
- ┆ Gamma Ray Samples
- ┆ Resistivity Samples

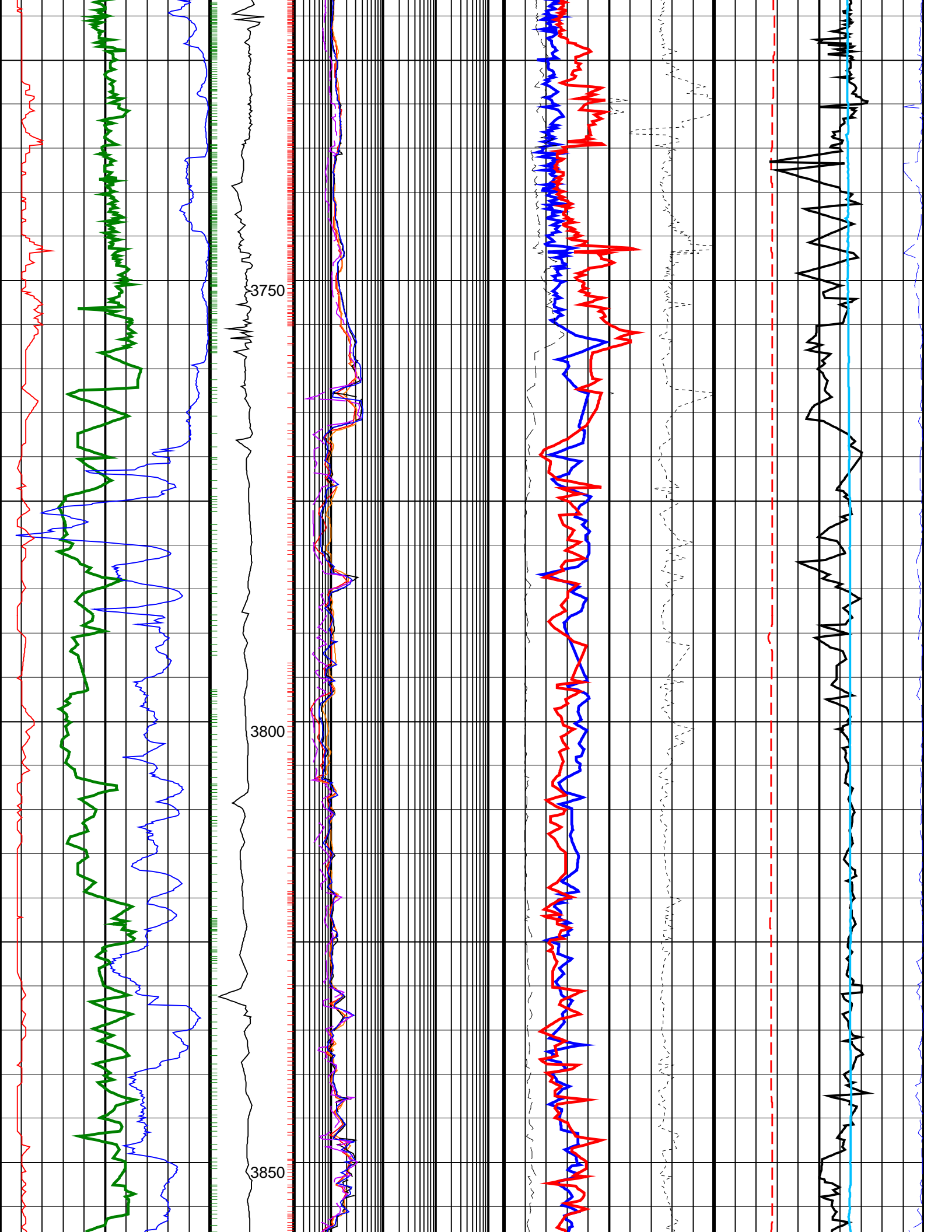
	Shallow Button Resistivity, Real-Time (RES_BS_RT) 0.2 (OHMM) 2000		Equivalent Circulating Density, Real-Time (ECD_ECO_RT) 0 (G/C3) 2
	Deep Button Resistivity, Real-Time (RES_BD_RT) 0.2 (OHMM) 2000		
Ultrasonic Caliper, Average Diameter, Real-Time, Recomputed at Surface (UCAV_ECO_RT) 8 (IN) 13	Ring Resistivity, Real-Time (RES_RING_RT) 0.2 (OHMM) 2000	Photoelectric Factor, Bottom, Real-Time, Computed Downhole (PEB_DH_ECO_RT) 0 (----) 10	Bulk Density Correction, Bottom, Real-Time Computed Downhole (DRHB_DH_ECO_RT) -0.25 0.25 (G/C3)
		Bulk Density, Bottom, Real-Time, Computed Downhole (ROBB_DH_ECO_RT) 1.95 (G/C3) 2.95	Delta-T Compressional, Real-Time (DTCO_RT) 40 (US/F) 140
Gamma Ray, Average, Real-Time (GRMA_ECO_RT) 0 (GAPI) 200	ARC Phase Shift Resistivity 40 inch at 2 MHz, Real-Time (P40H_ECO_RT) 0.2 (OHMM) 2000		Coherence at Compressional Peak, Real-Time (CHCO_RT) -9 (----) 1
ROP*5 (ROP5) 200 (M/HR) 0	ARC Phase Shift Resistivity 16 inch at 2 MHz, Real-Time (P16H_ECO_RT) 0.2 (OHMM) 2000	Best Thermal Neutron Porosity, Average, Real-Time (BPHI_ECO_RT) 45 (PU) -15	Downhole Annulus Temperature, Real Time, Computed Downhole (DHAT_DH_ECO_RT) 0 (DEGC) 200
	MWD Collar RPM (CRPM_RT) (RPM) 0 400		

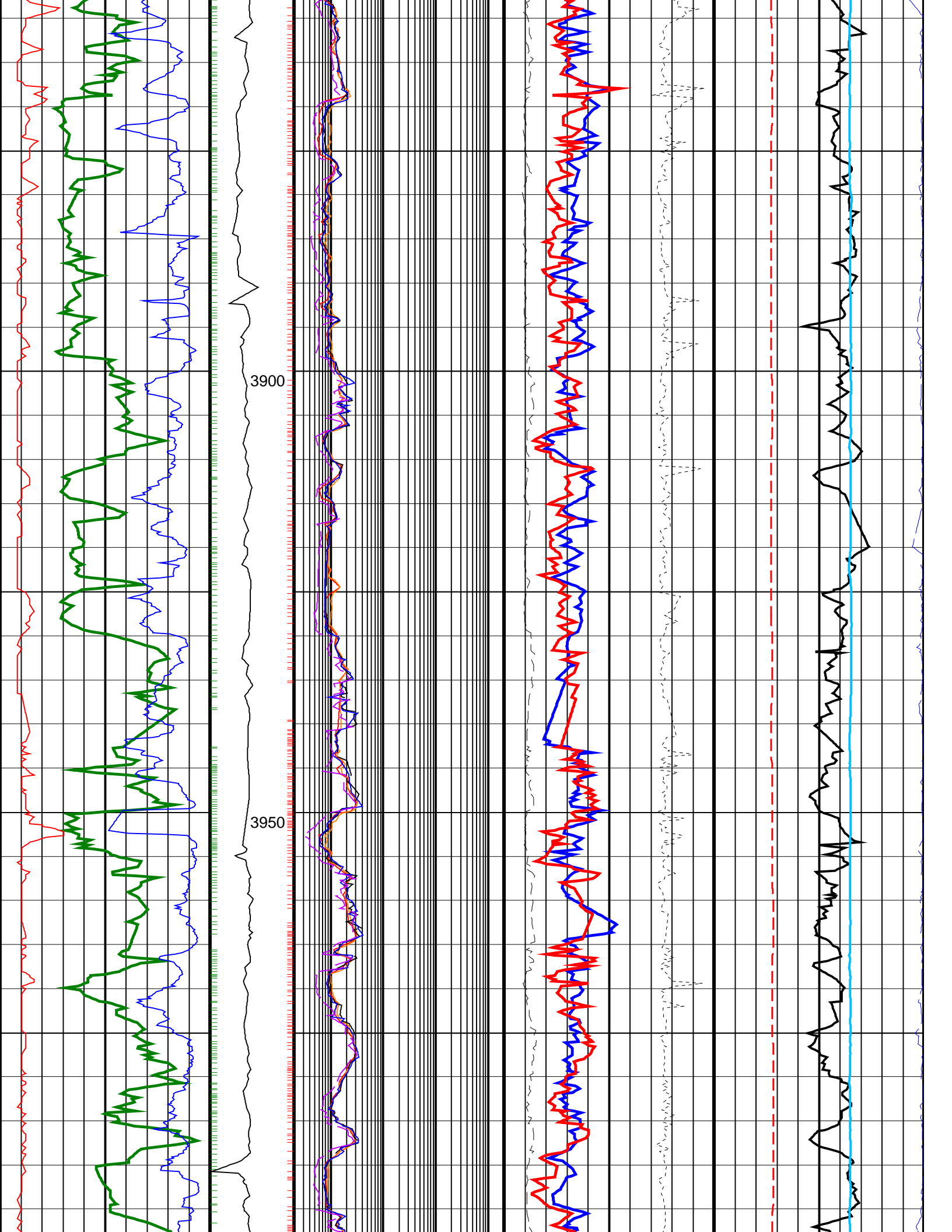


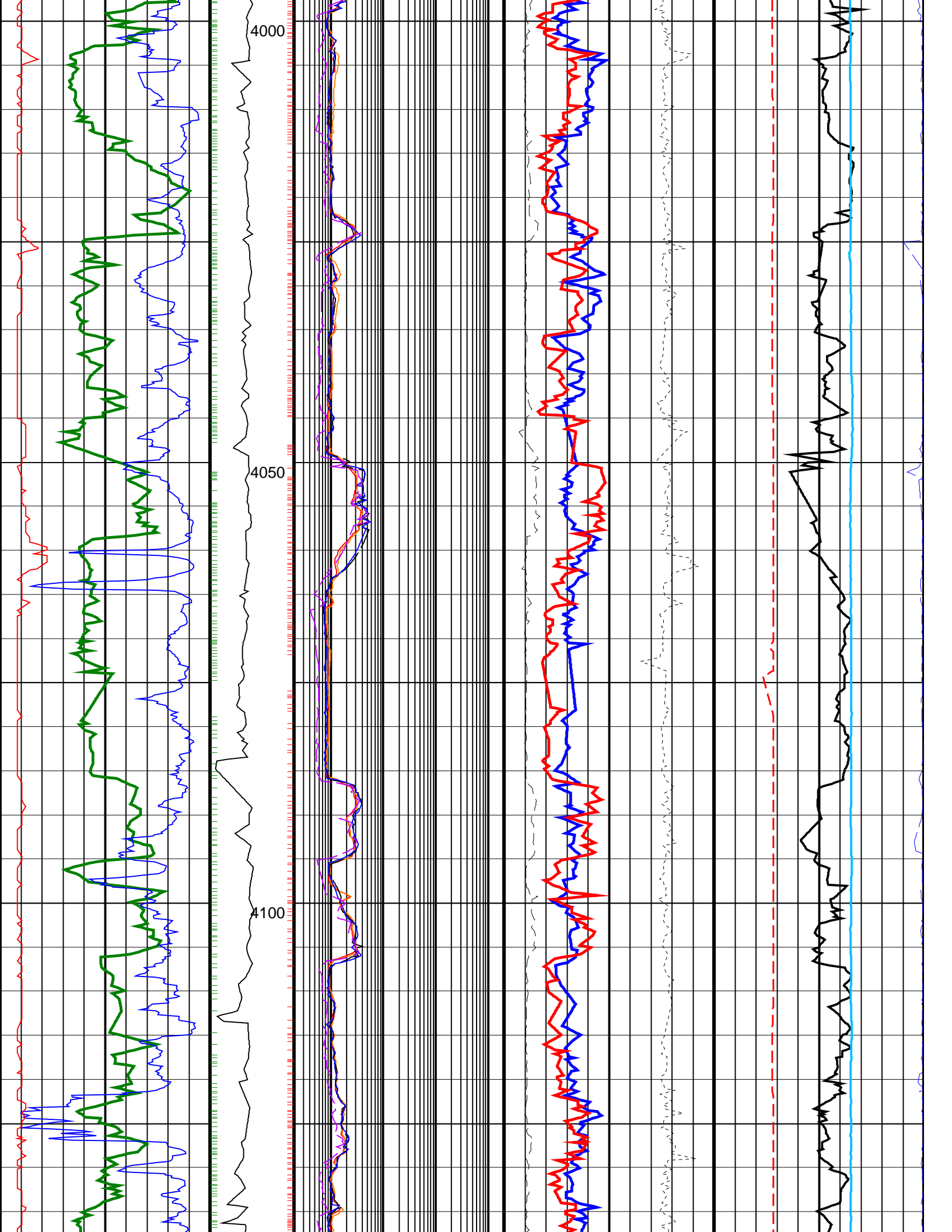


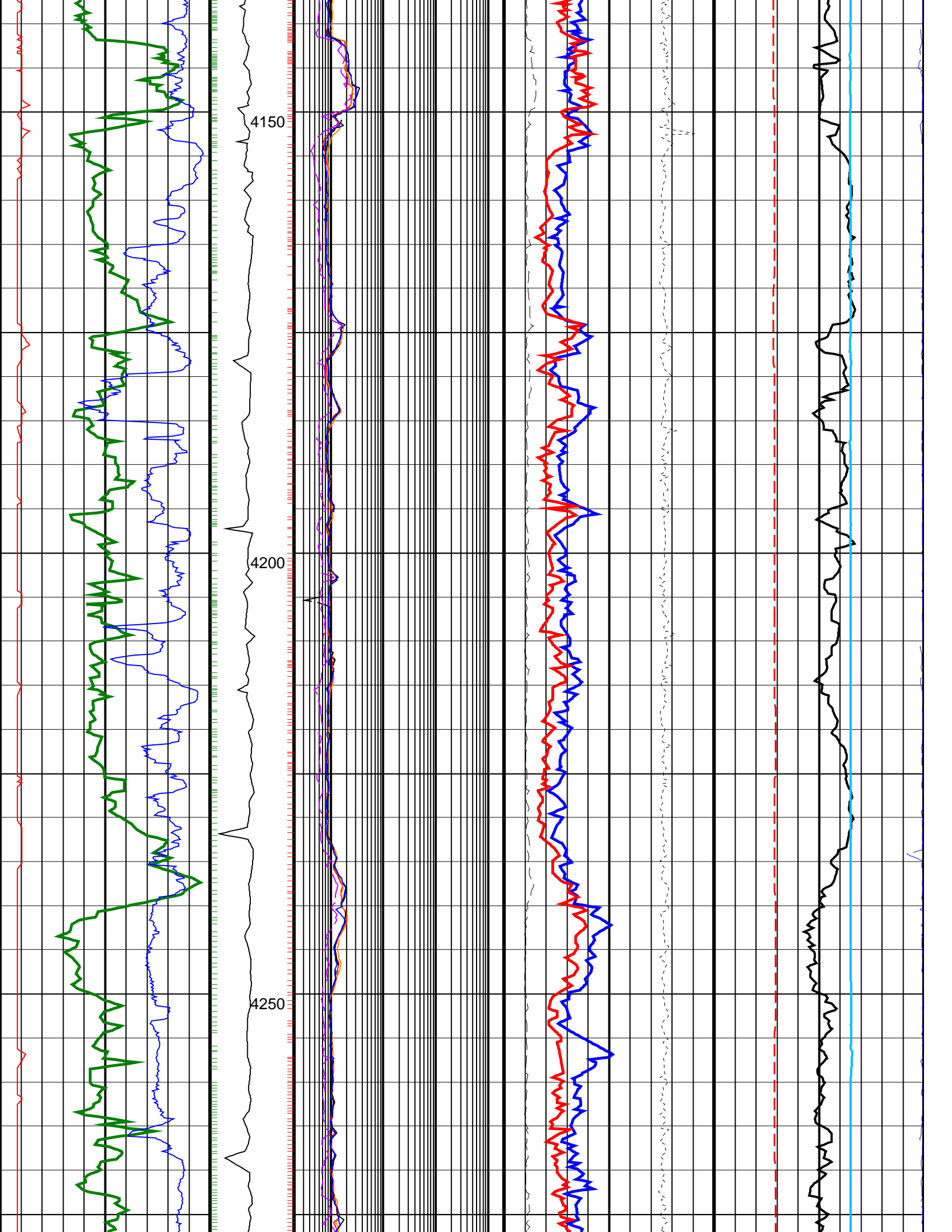


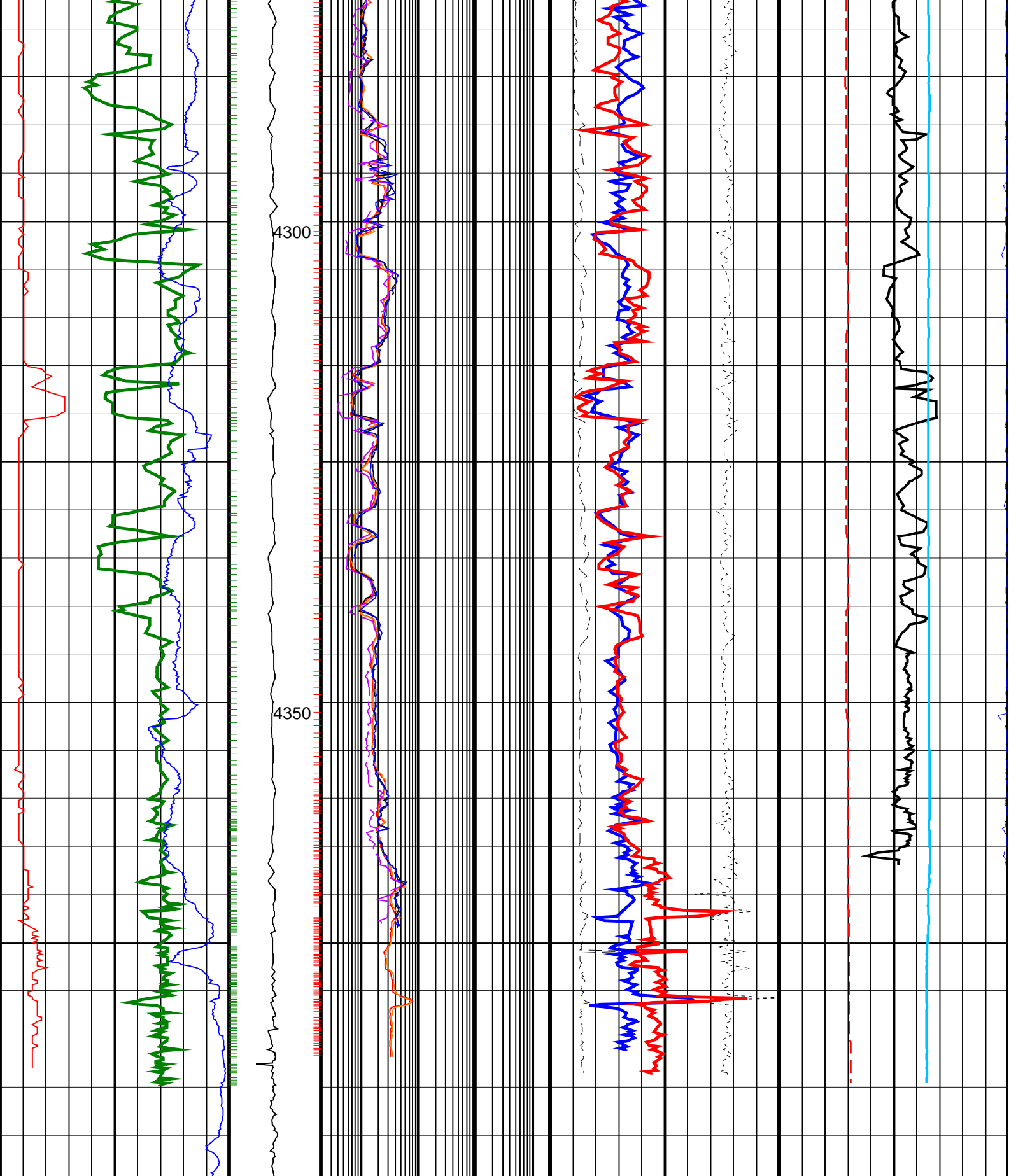












<p>ROP*5 (ROP5) 200 (M/HR) 0</p>	<p>MWD Collar RPM (CRPM_RT) (RPM) 0 400</p>	<p>ARC Phase Shift Resistivity 16 inch at 2 MHz, Real-Time (P16H_ECO_RT) 0.2 (OHMM) 2000</p>	<p>Best Thermal Neutron Porosity, Average, Real-Time (BPHI_ECO_RT) 45 (PU) -15</p>	<p>Downhole Annulus Temperature, Real Time, Computed Downhole (DHAT_DH_ECO_RT) 0 (DEGC) 200</p>
---	--	---	---	--

<p>Gamma Ray, Average, Real-Time (GRMA ECO RT)</p>	<p>ARC Phase Shift Resistivity 40 inch at 2 MHz, Real-Time (P40H_ECO_RT)</p>	<p>Bulk Density, Bottom, Real-Time, Computed Downhole (ROBB_DH_ECO_RT)</p>	<p>Coherence at Compressional Peak Real-Time (CHCO RT)</p>	<p>Coherence at Compressional Peak Real-Time (CHCO RT)</p>
---	---	---	---	---

