

Dory-1

Apache Energy Ltd

Recorded LWD Data - Field Data

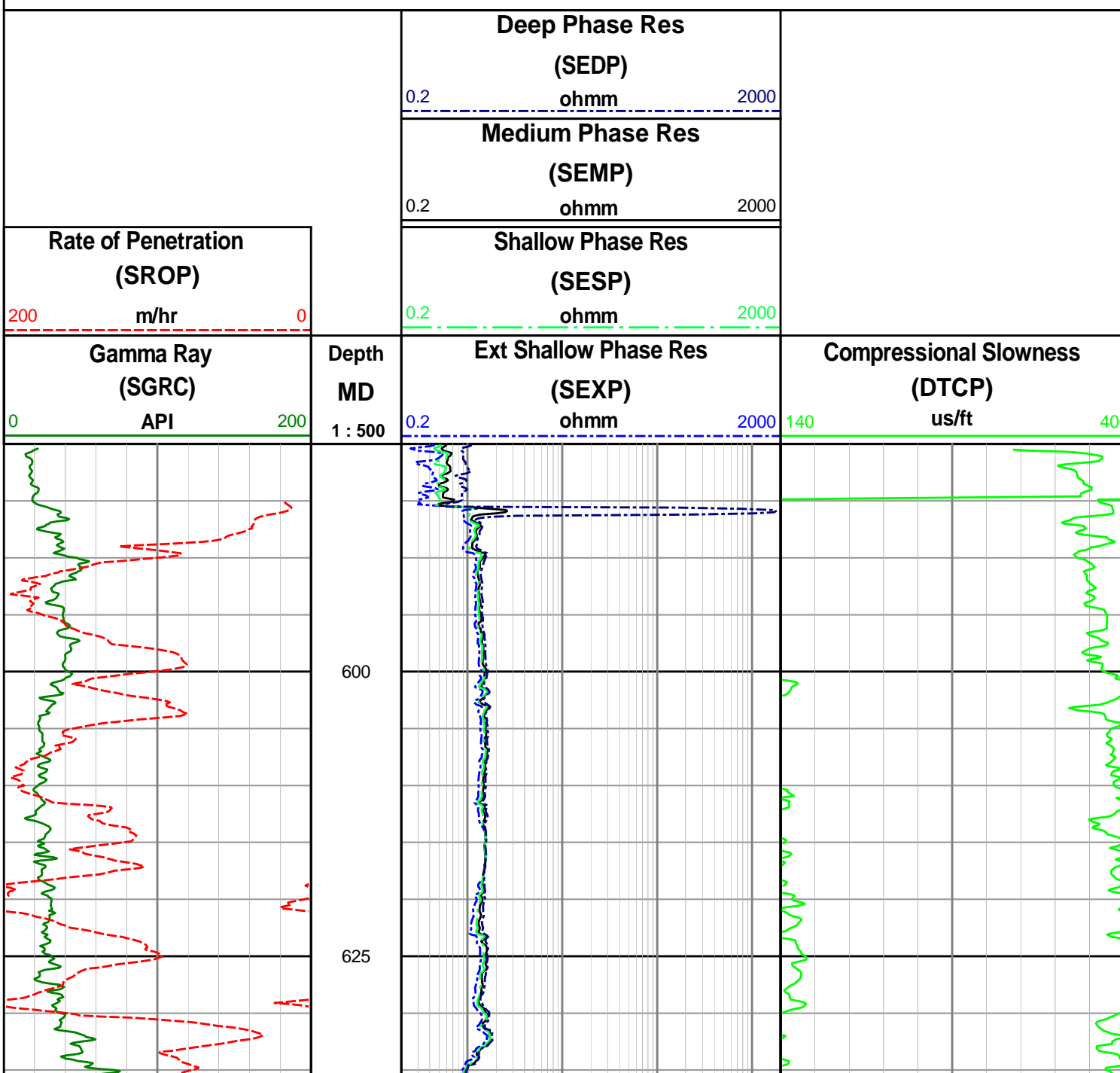
406mm Hole Section

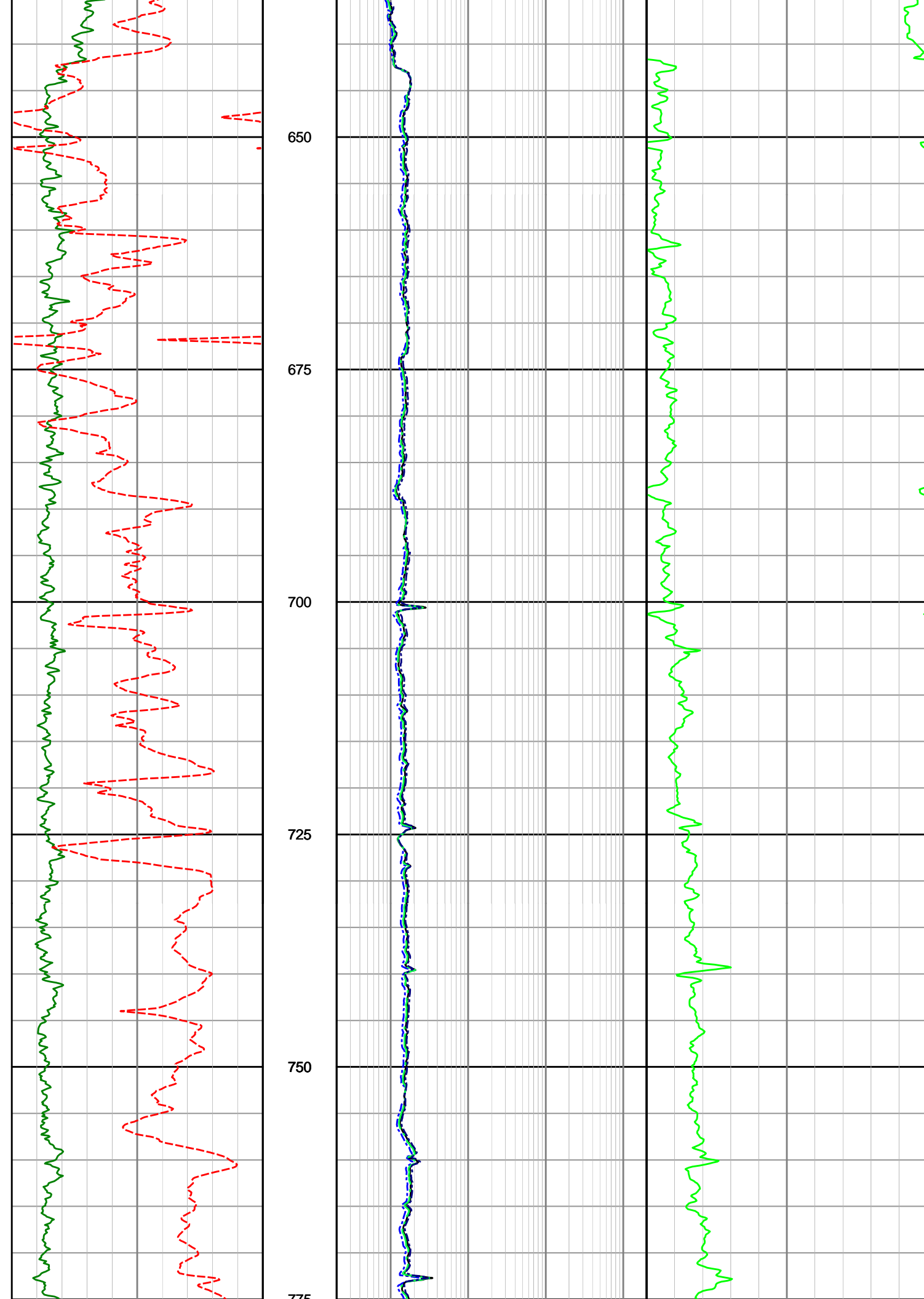
Environmental Parameters:

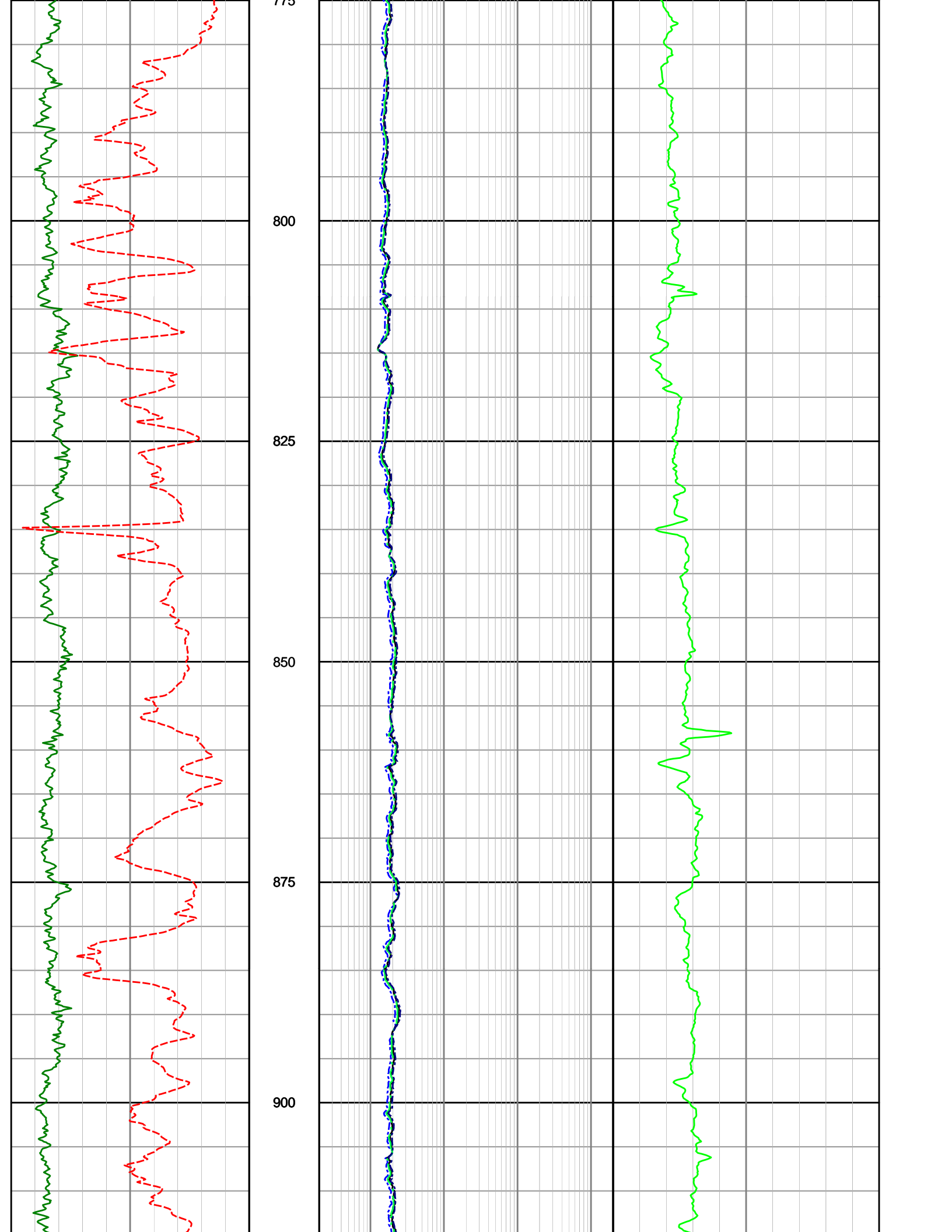
Hole Size = 406mm, Tool Size = 241mm
 Mud Type = Sea water with gel sweeps
 MW = 1.03 sg

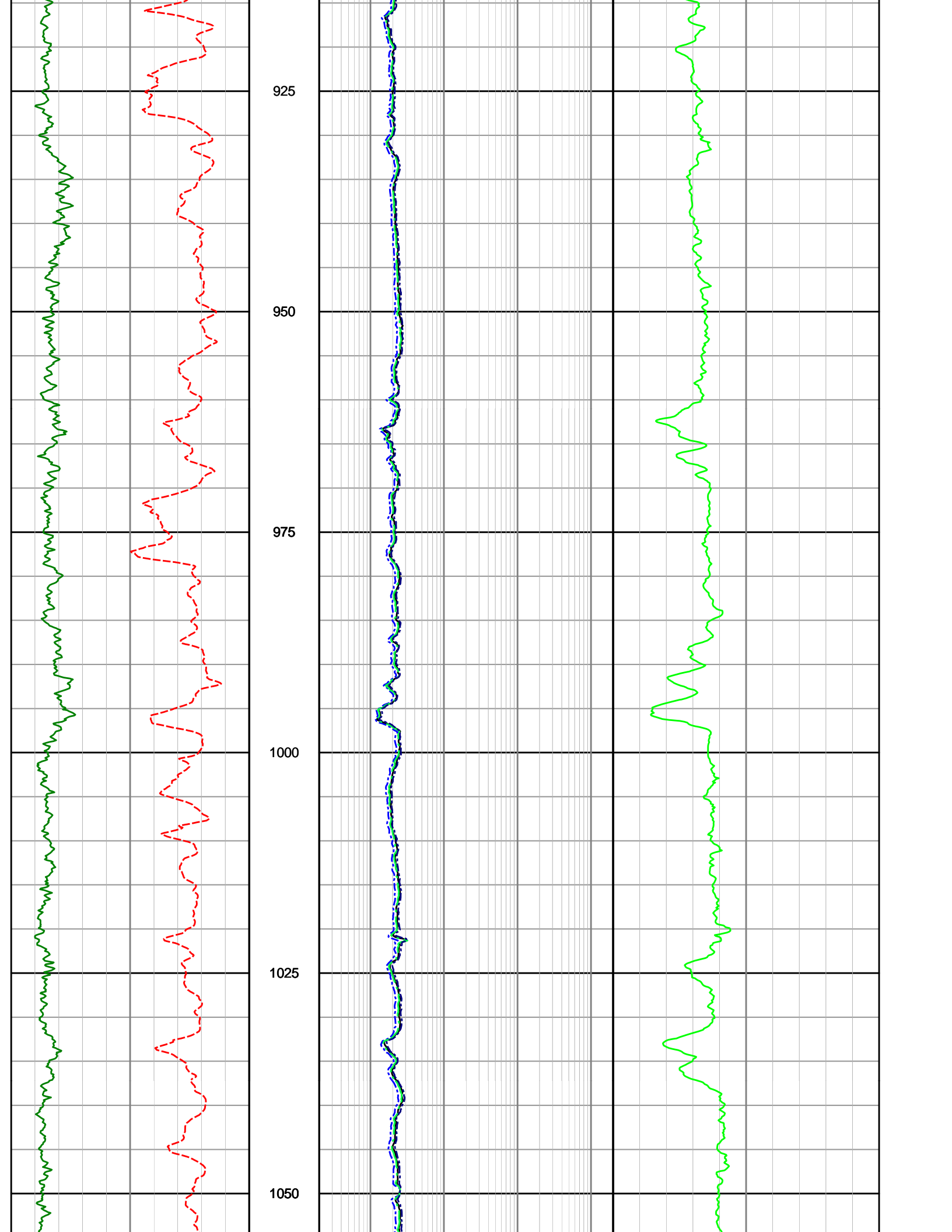
Remarks:

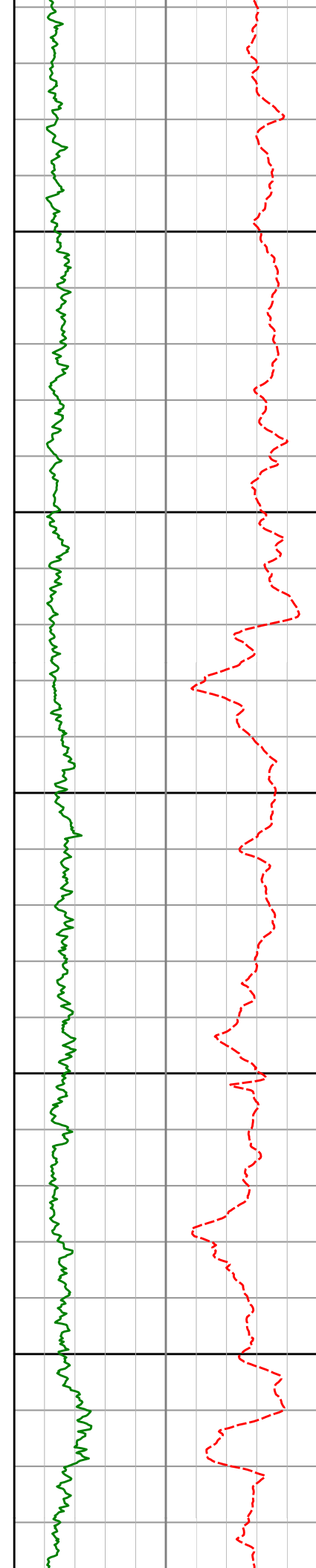
1. Gamma Ray have been environmentally corrected using the listed parameters where appropriate.











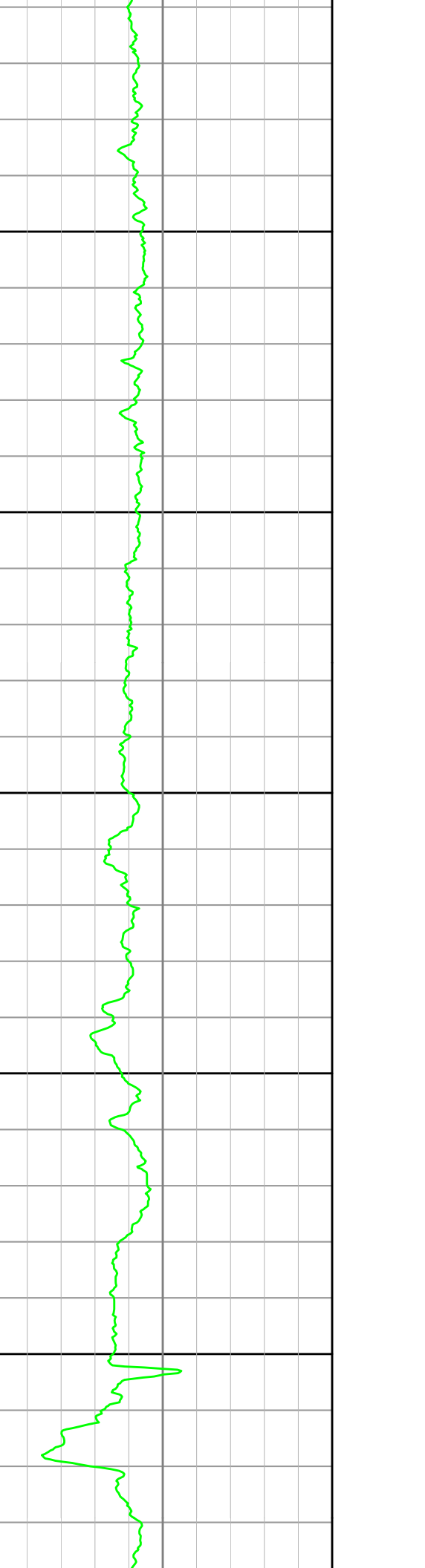
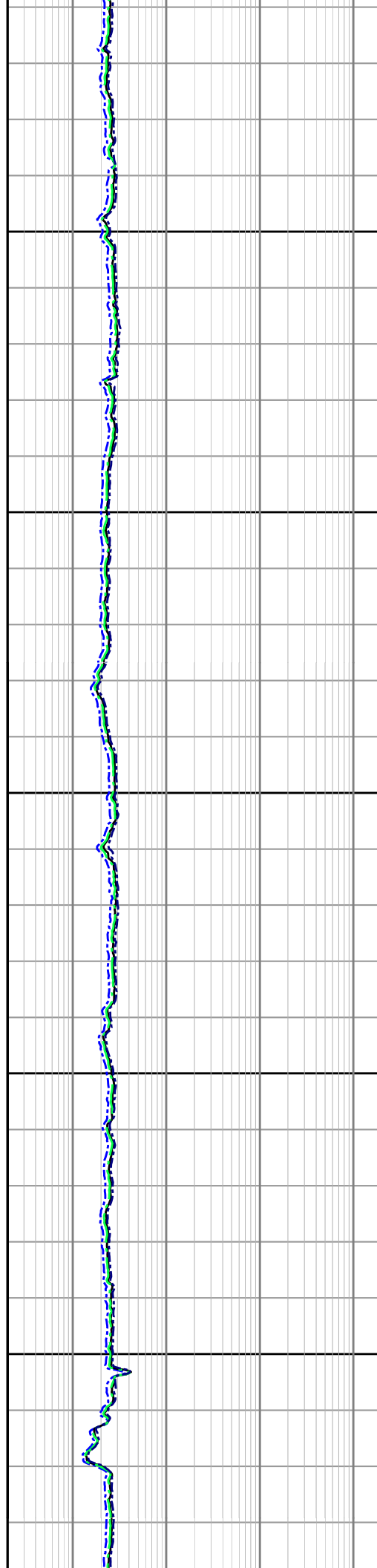
1075

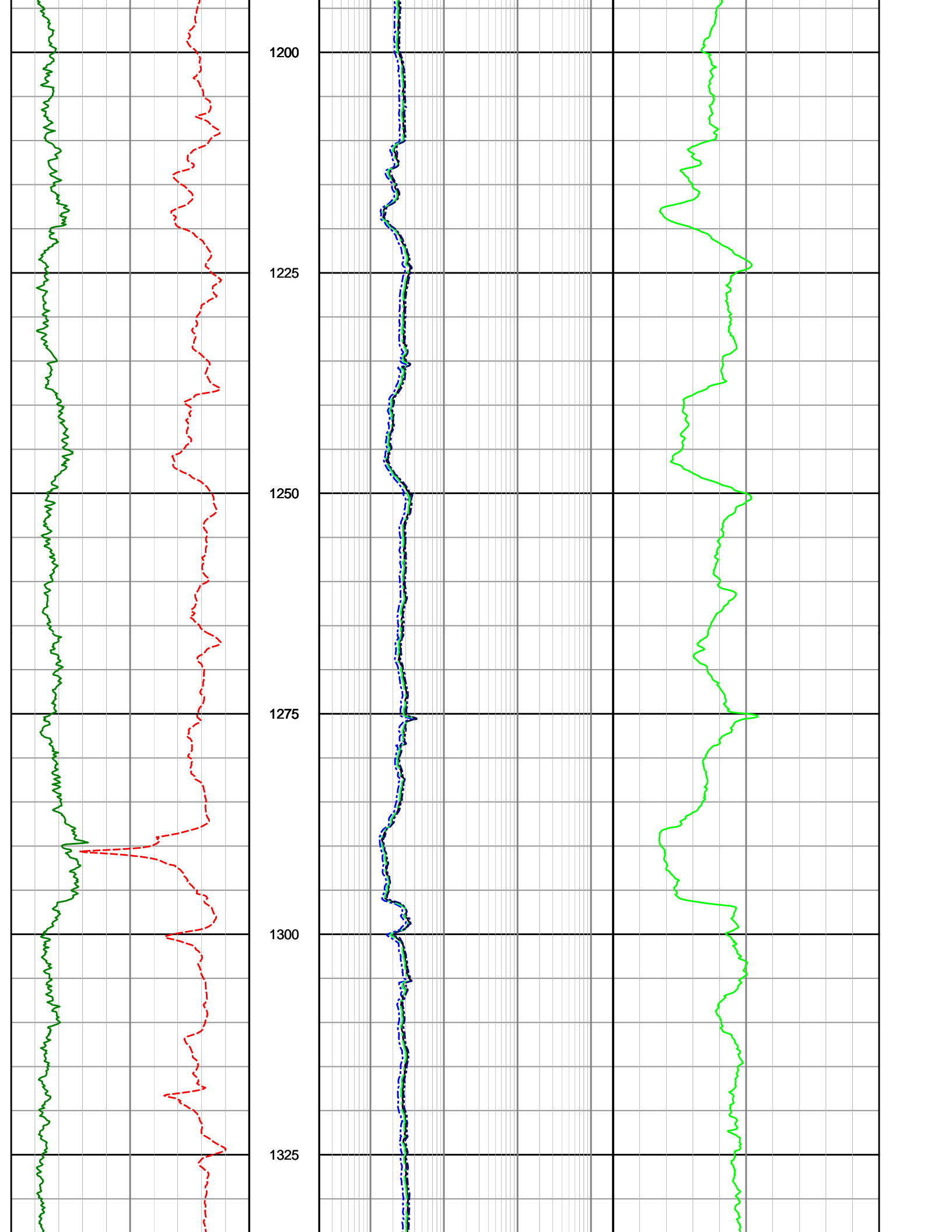
1100

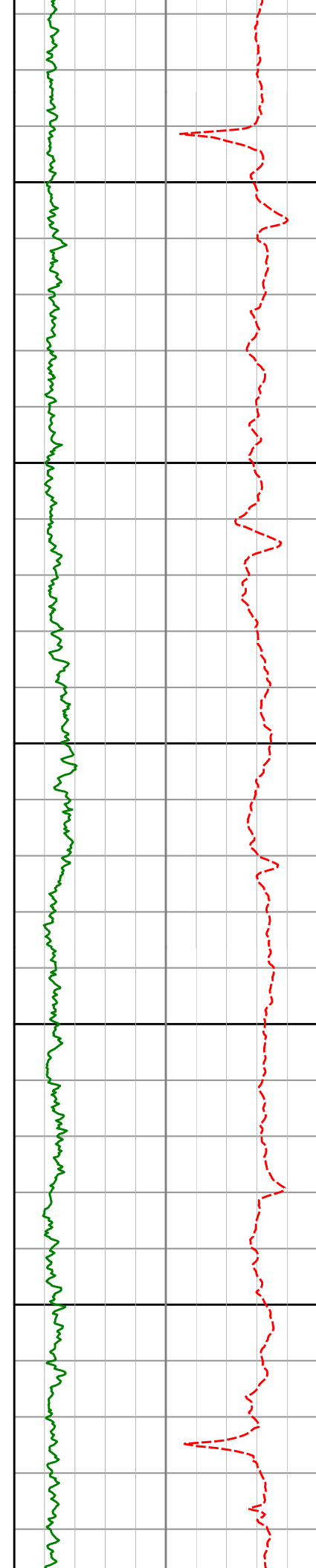
1125

1150

1175







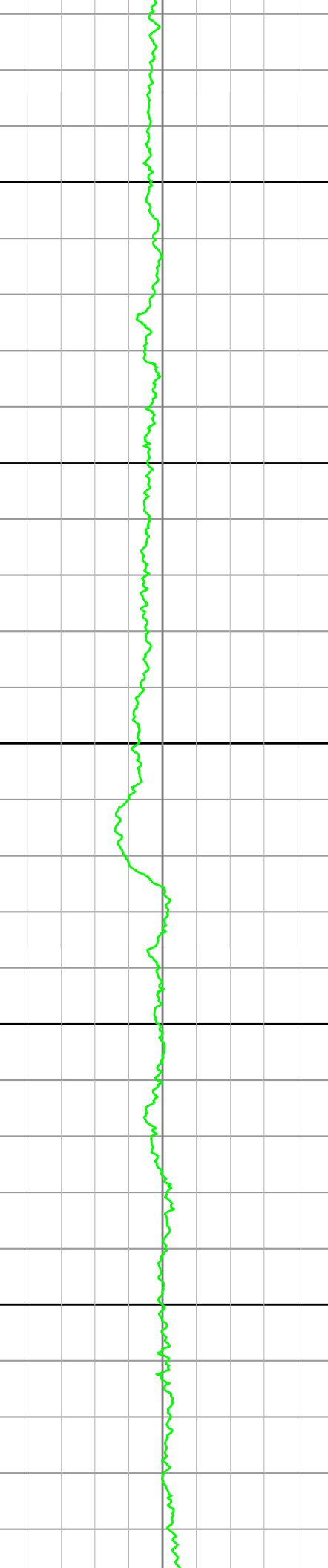
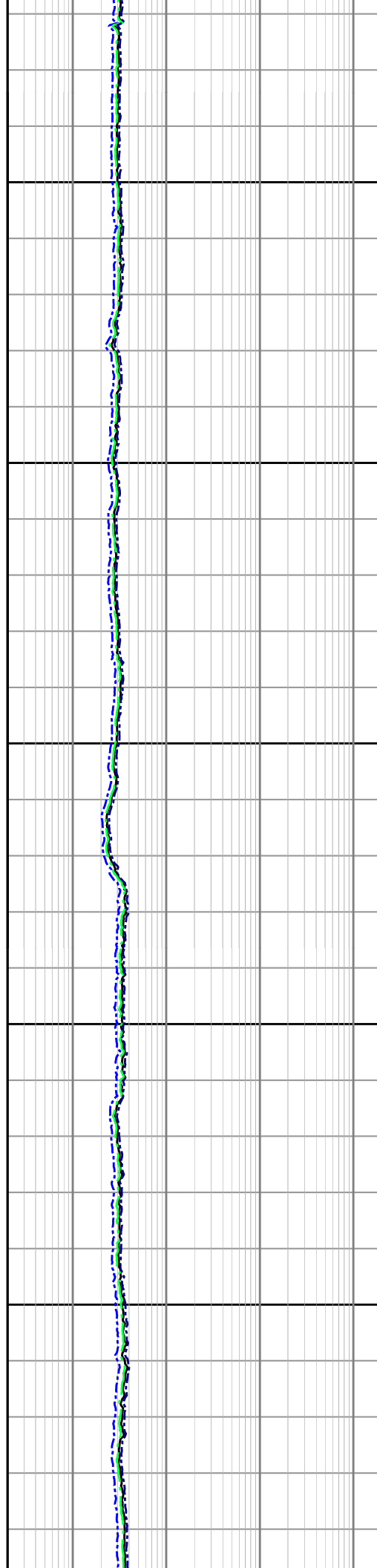
1350

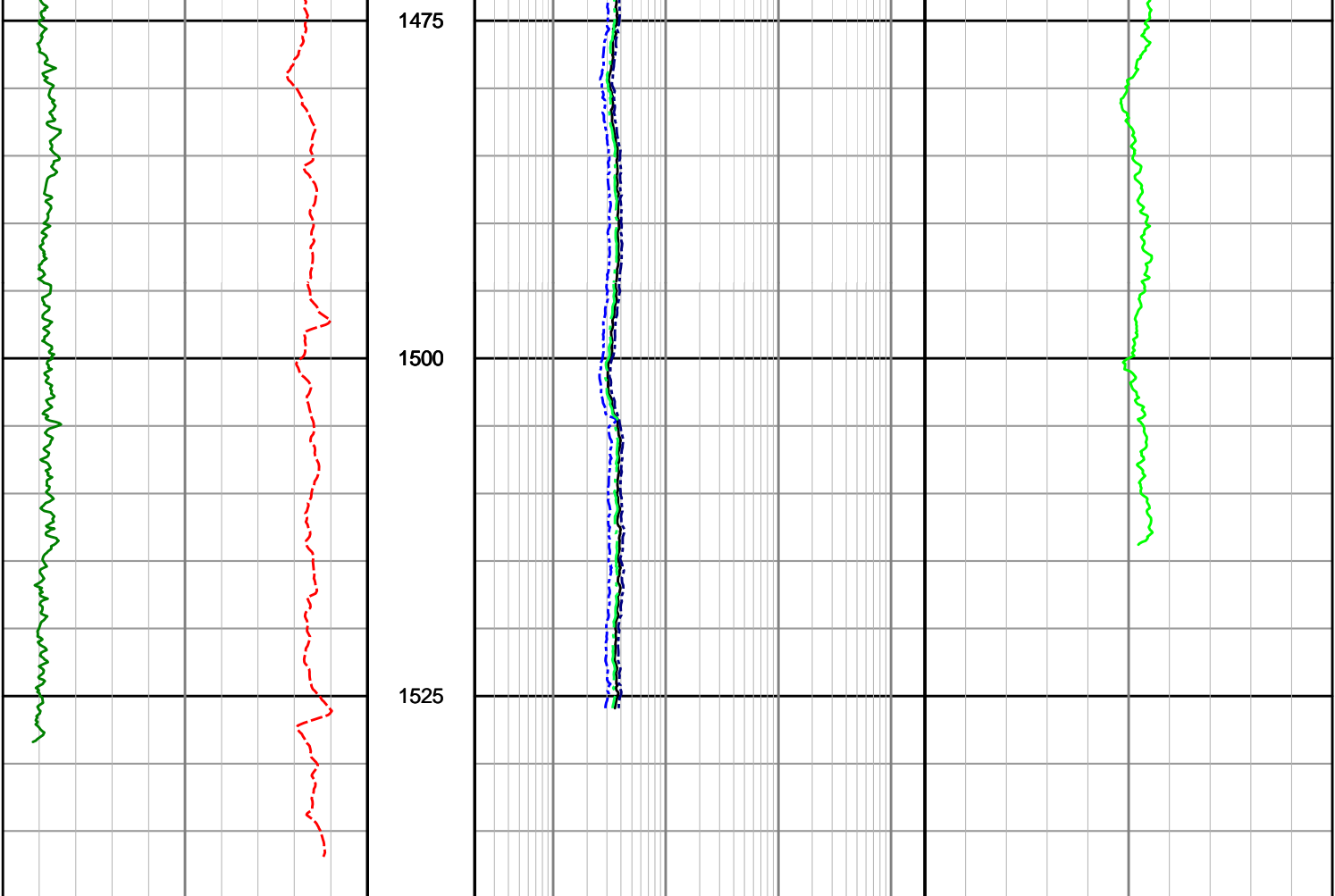
1375

1400

1425

1450





| | | | |
|--|--------------------------------|---|---|
| <p>Gamma Ray (SGRC) API</p> <p>0 200</p> | <p>Depth MD</p> <p>1 : 500</p> | <p>Ext Shallow Phase Res (SEXP) ohmm</p> <p>0.2 2000</p> | <p>Compressional Slowness (DTCP) us/ft</p> <p>140 40</p> |
| <p>Rate of Penetration (SROP) m/hr</p> <p>200 0</p> | | <p>Shallow Phase Res (SESP) ohmm</p> <p>0.2 2000</p> | |
| | | <p>Medium Phase Res (SEMP) ohmm</p> <p>0.2 2000</p> | |
| | | <p>Deep Phase Res (SEDP) ohmm</p> <p>0.2 2000</p> | |