

Dory-1

Apache Energy Ltd

Recorded LWD Data - Field Data

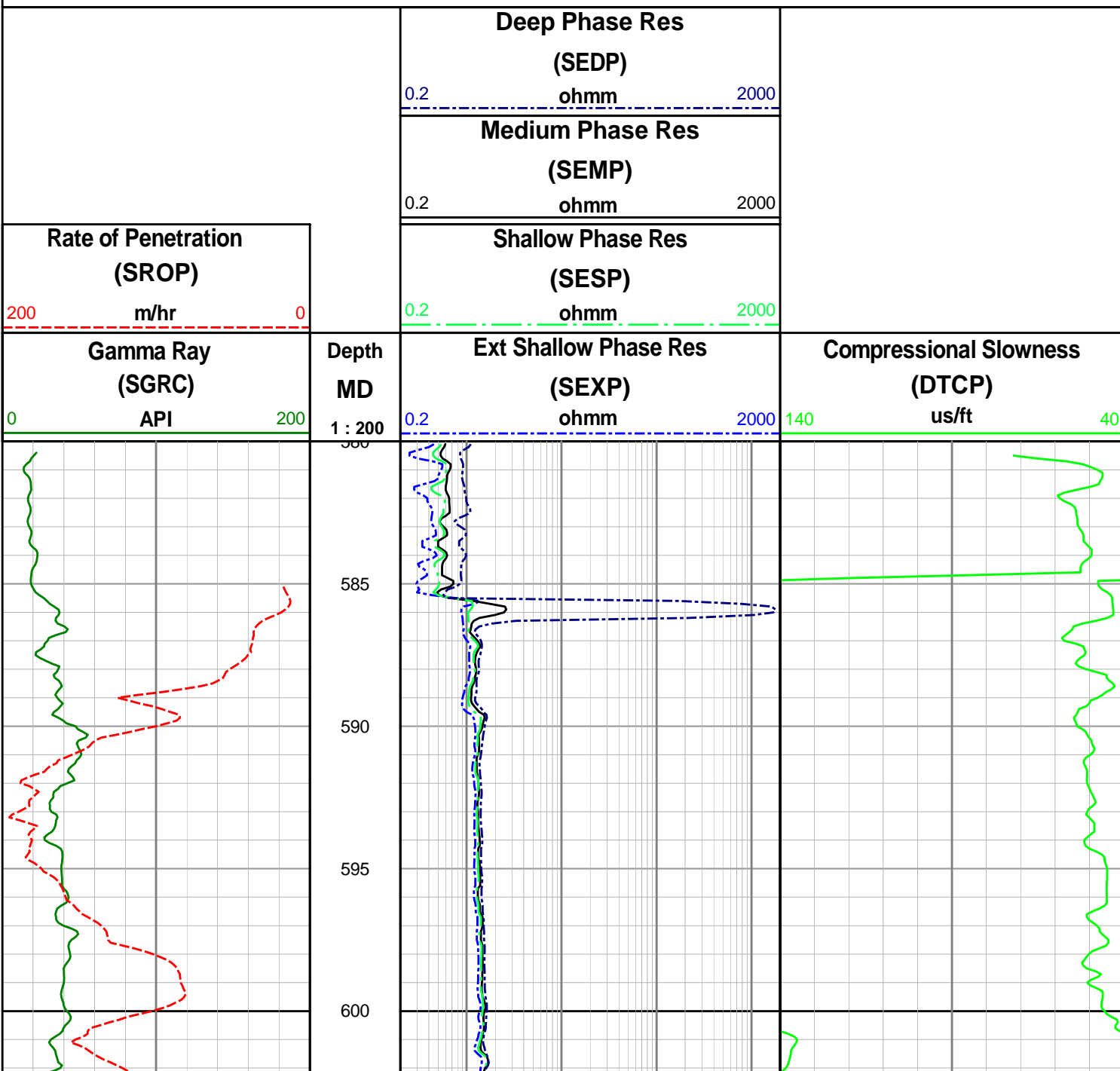
406mm Hole Section

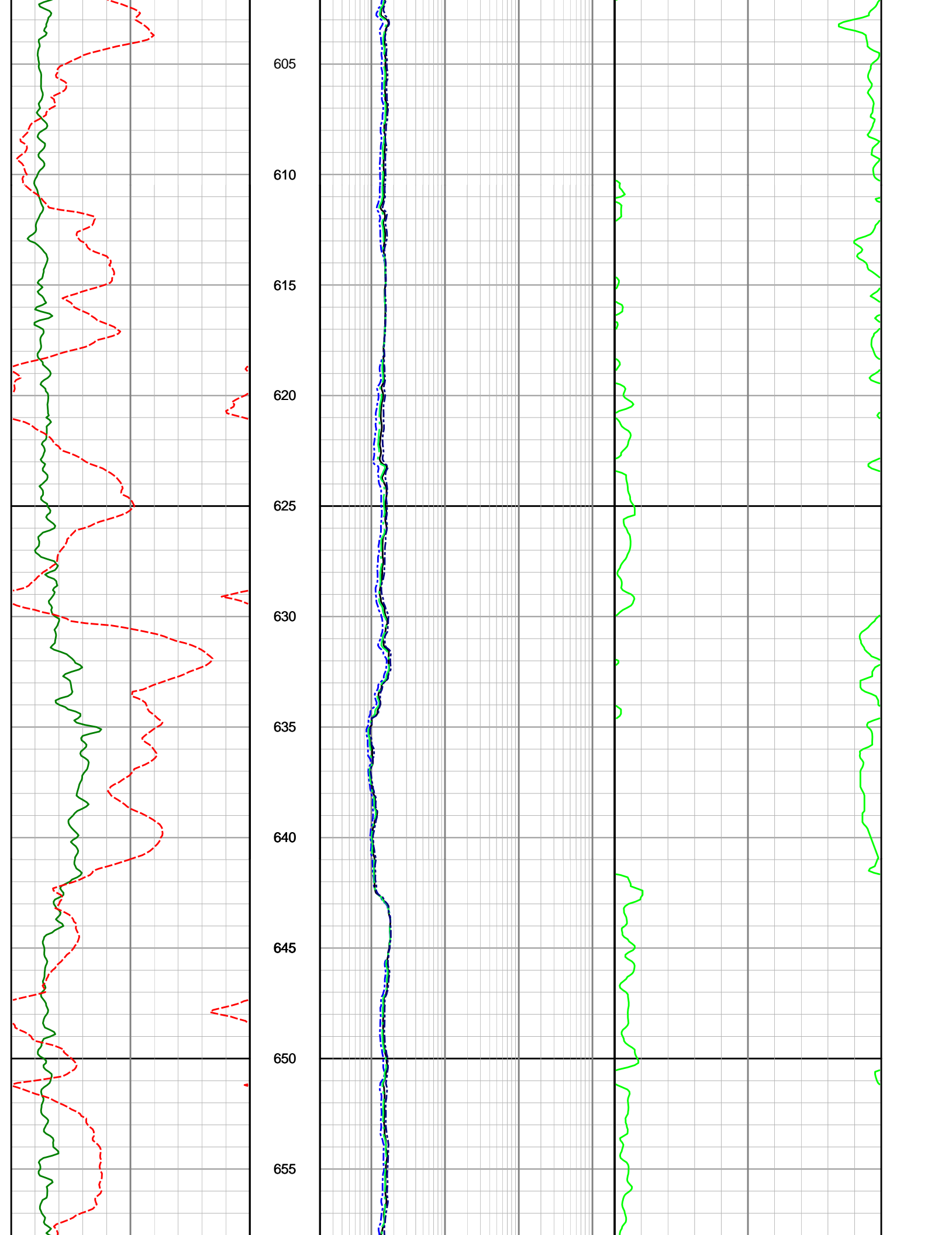
Environmental Parameters:

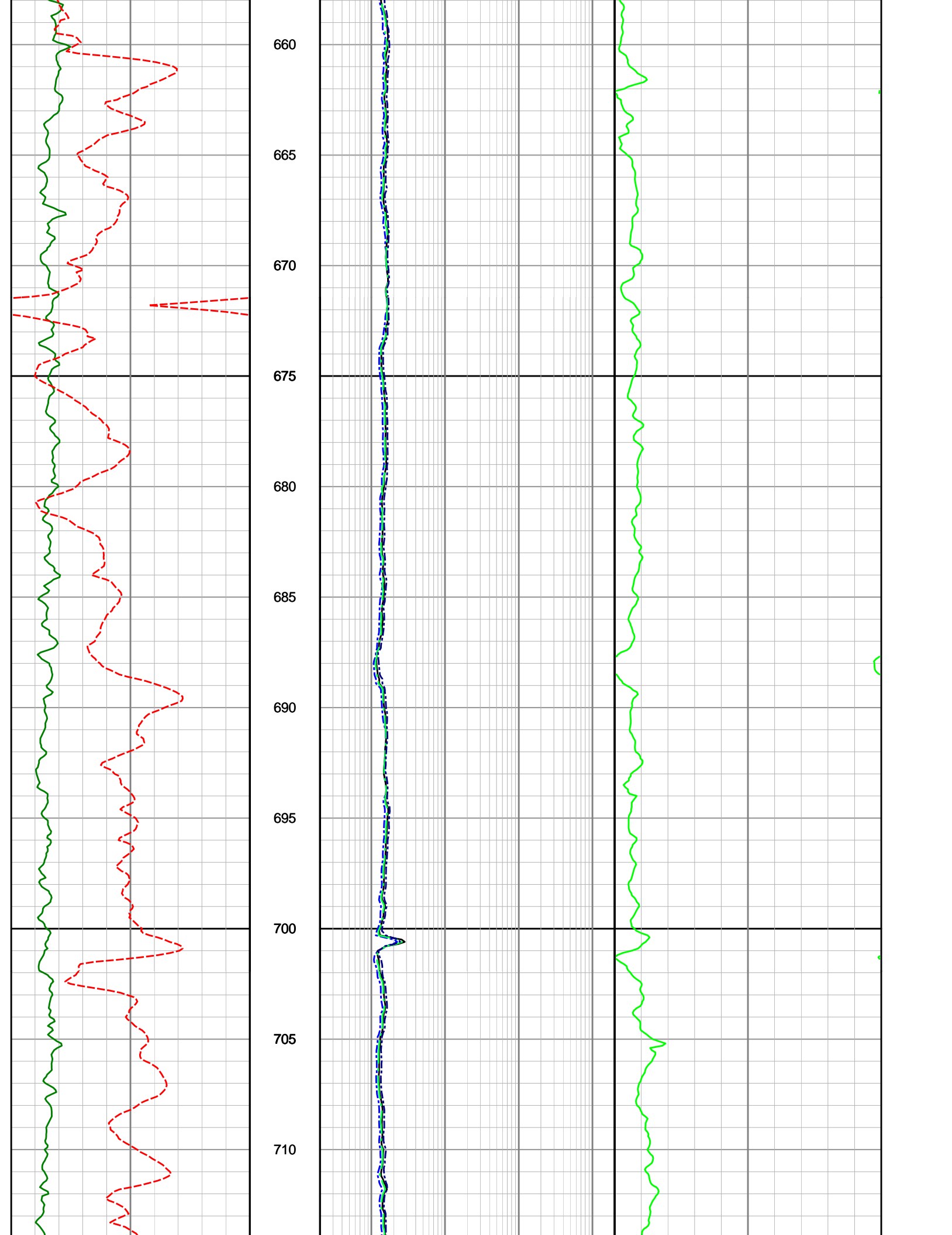
Hole Size = 406mm, Tool Size = 241mm
 Mud Type = Sea water with gel sweeps
 MW = 1.03 sg

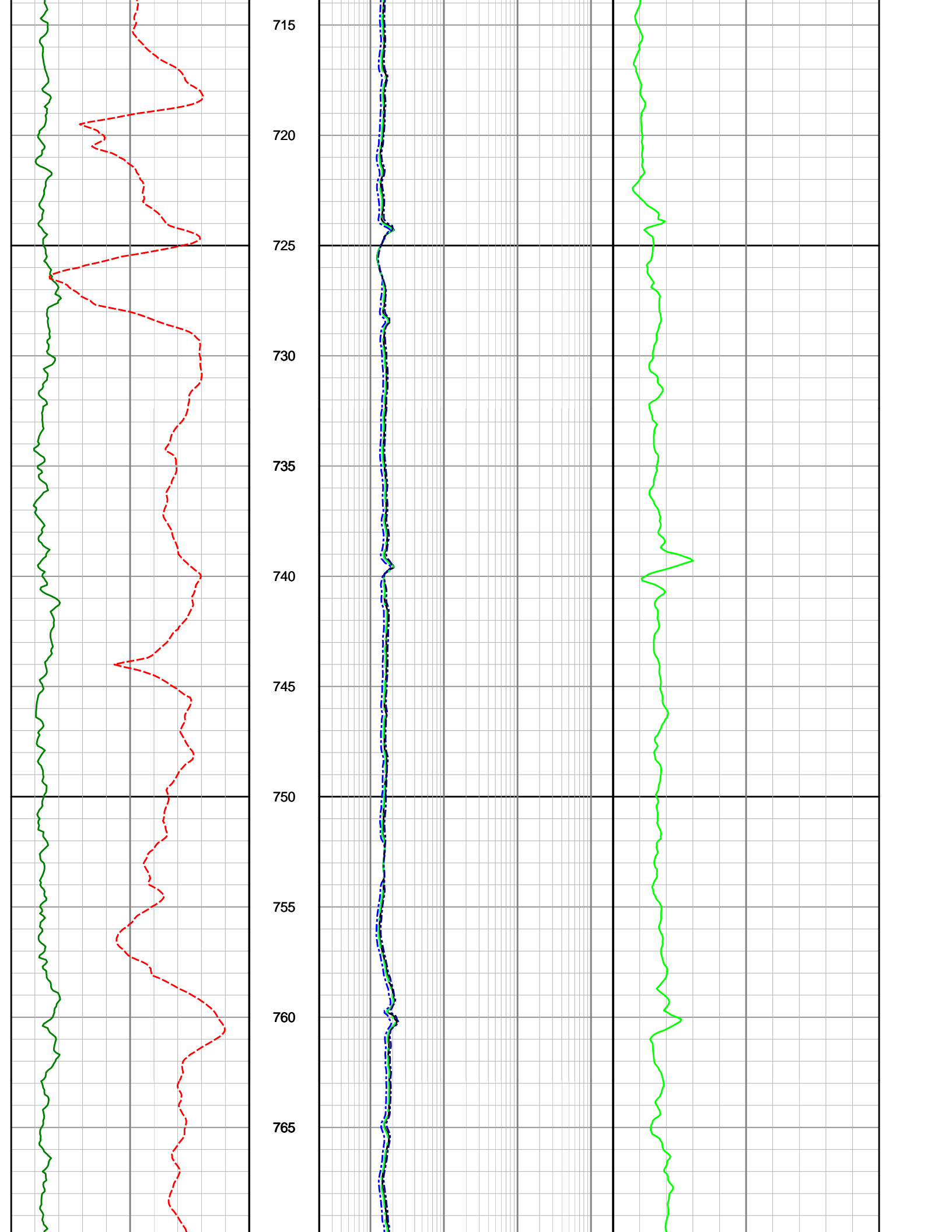
Remarks:

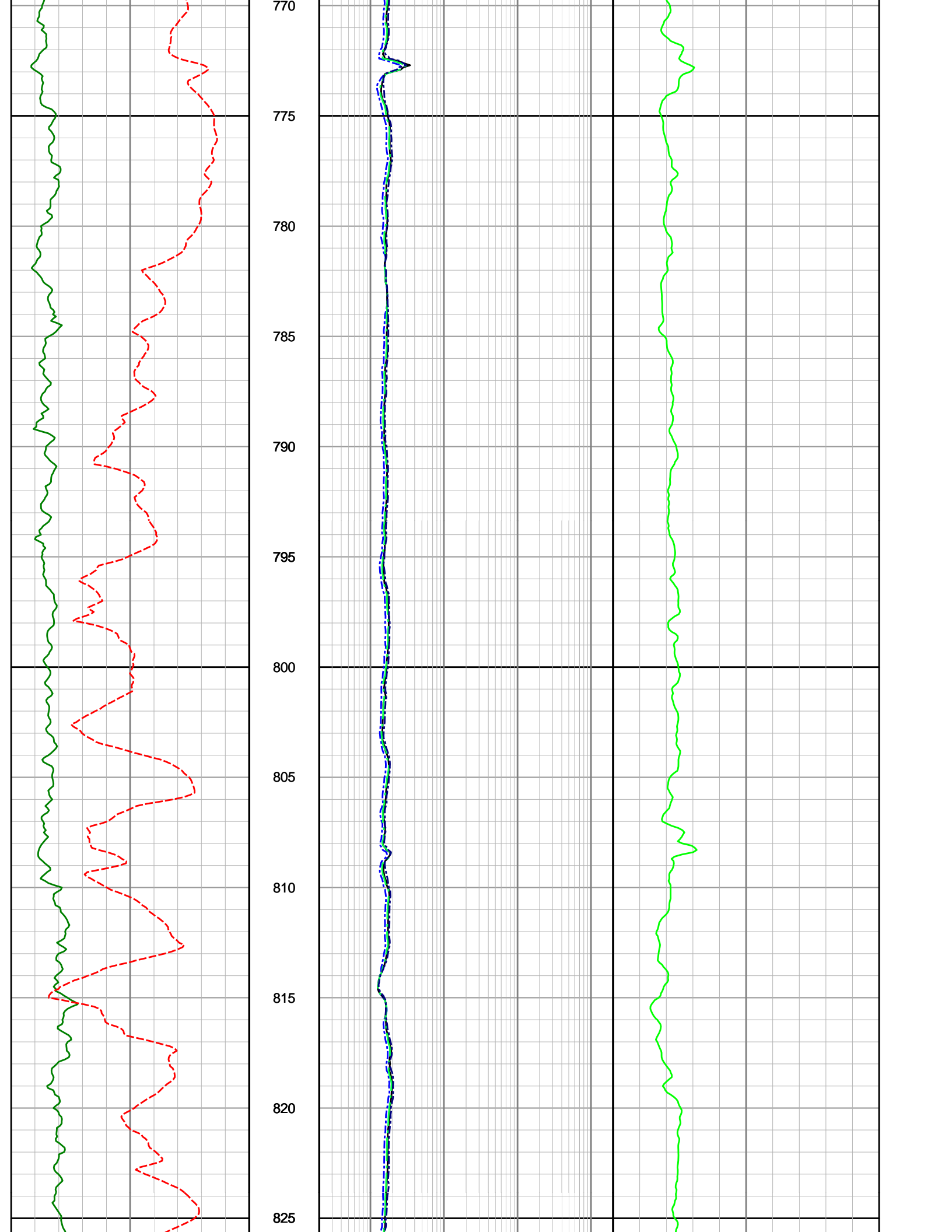
- Gamma Ray have been environmentally corrected using the listed parameters where appropriate.

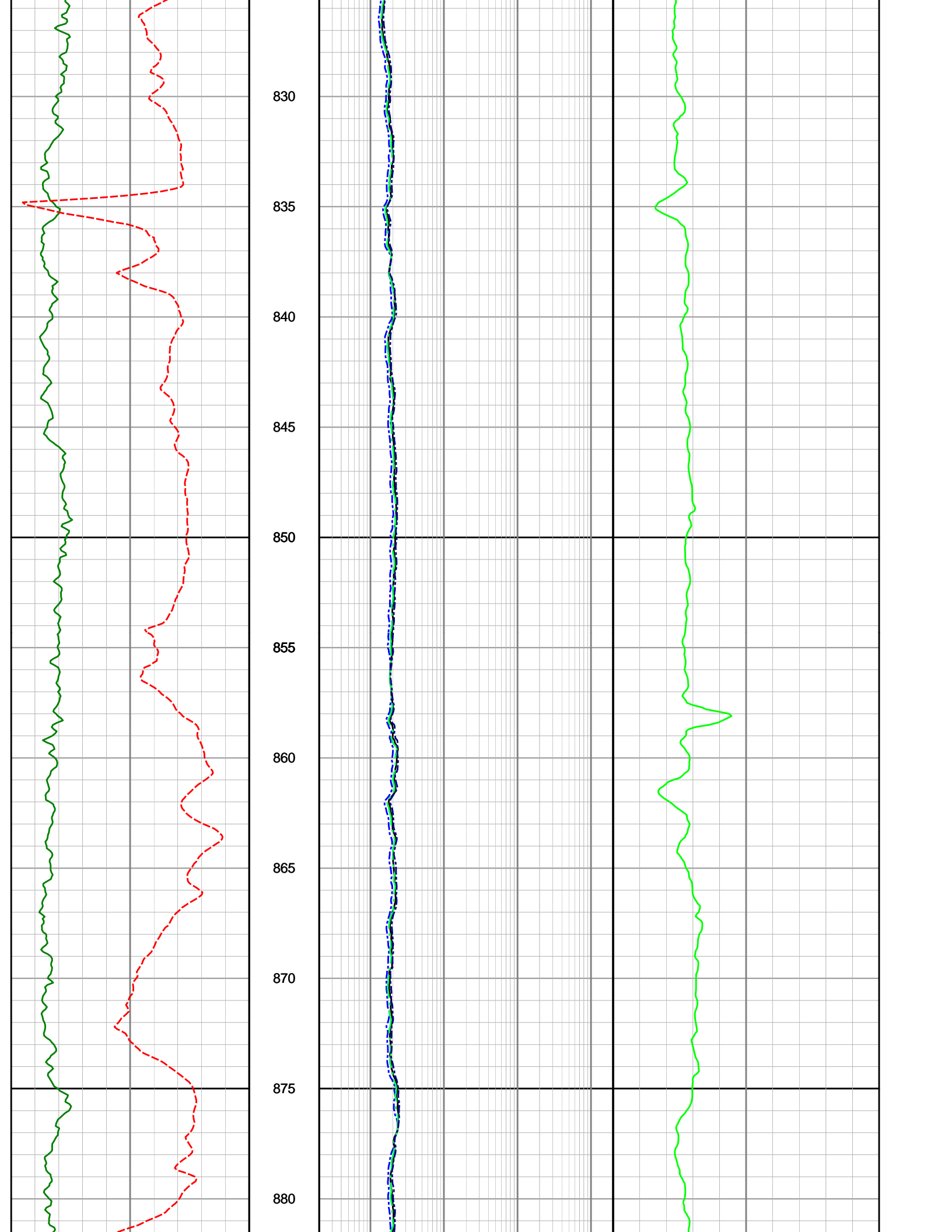


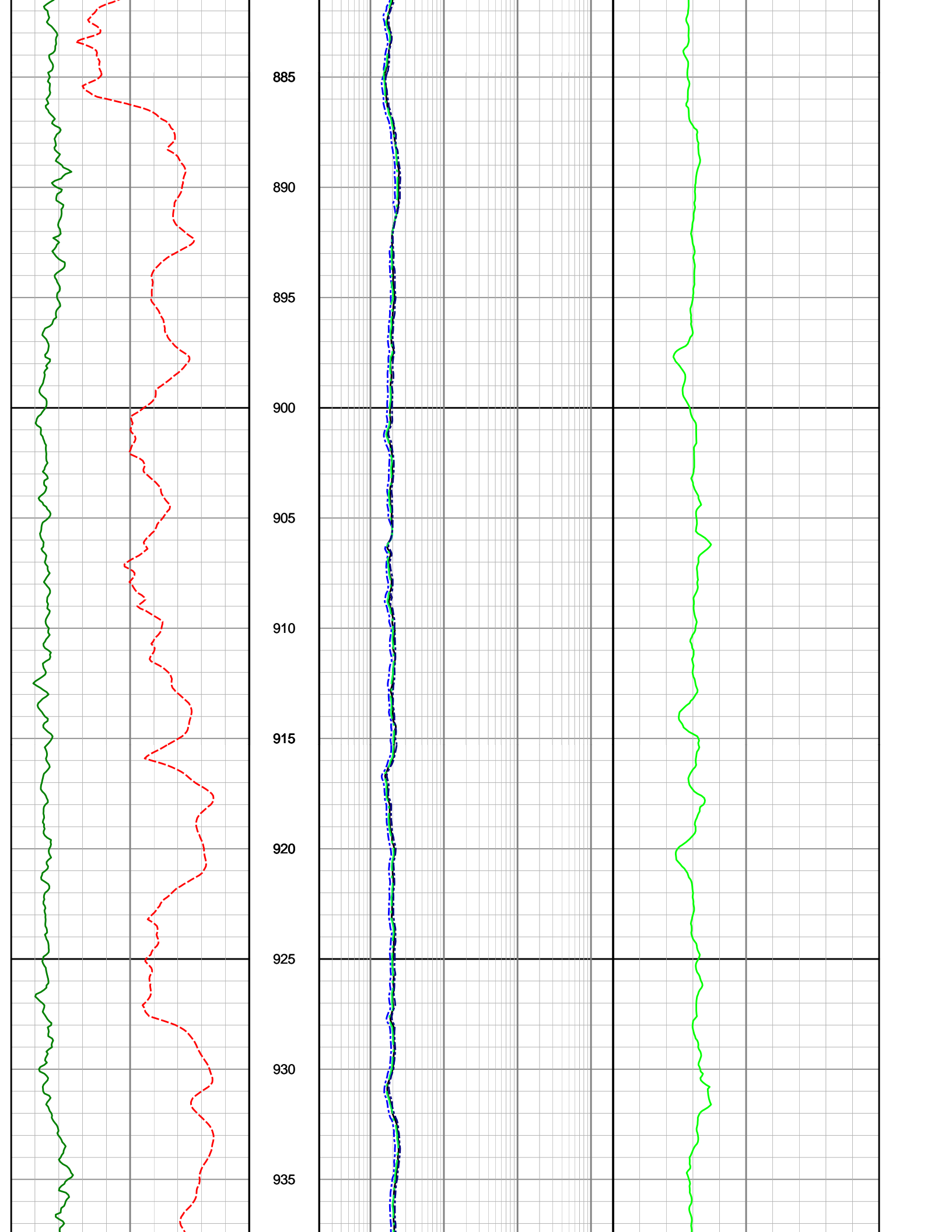


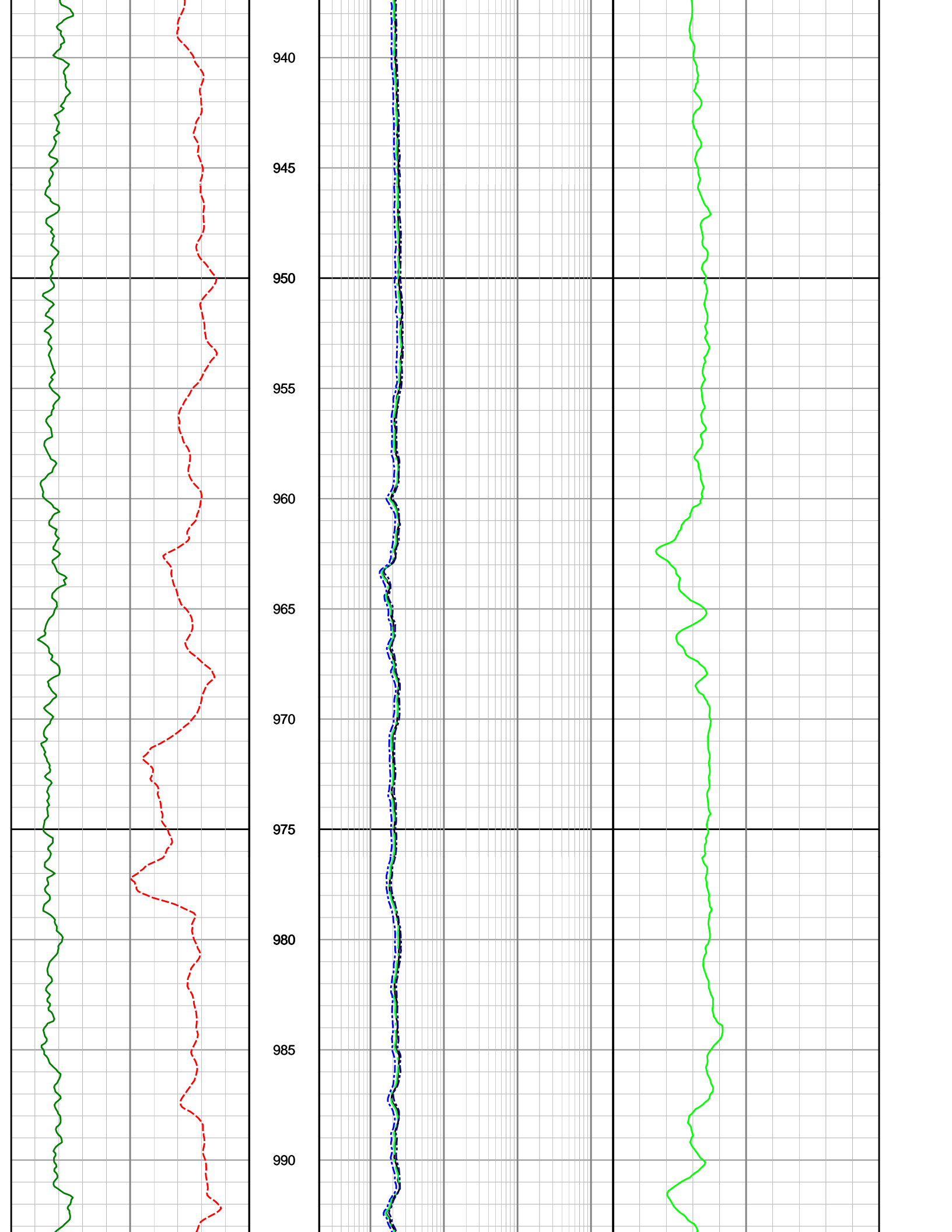


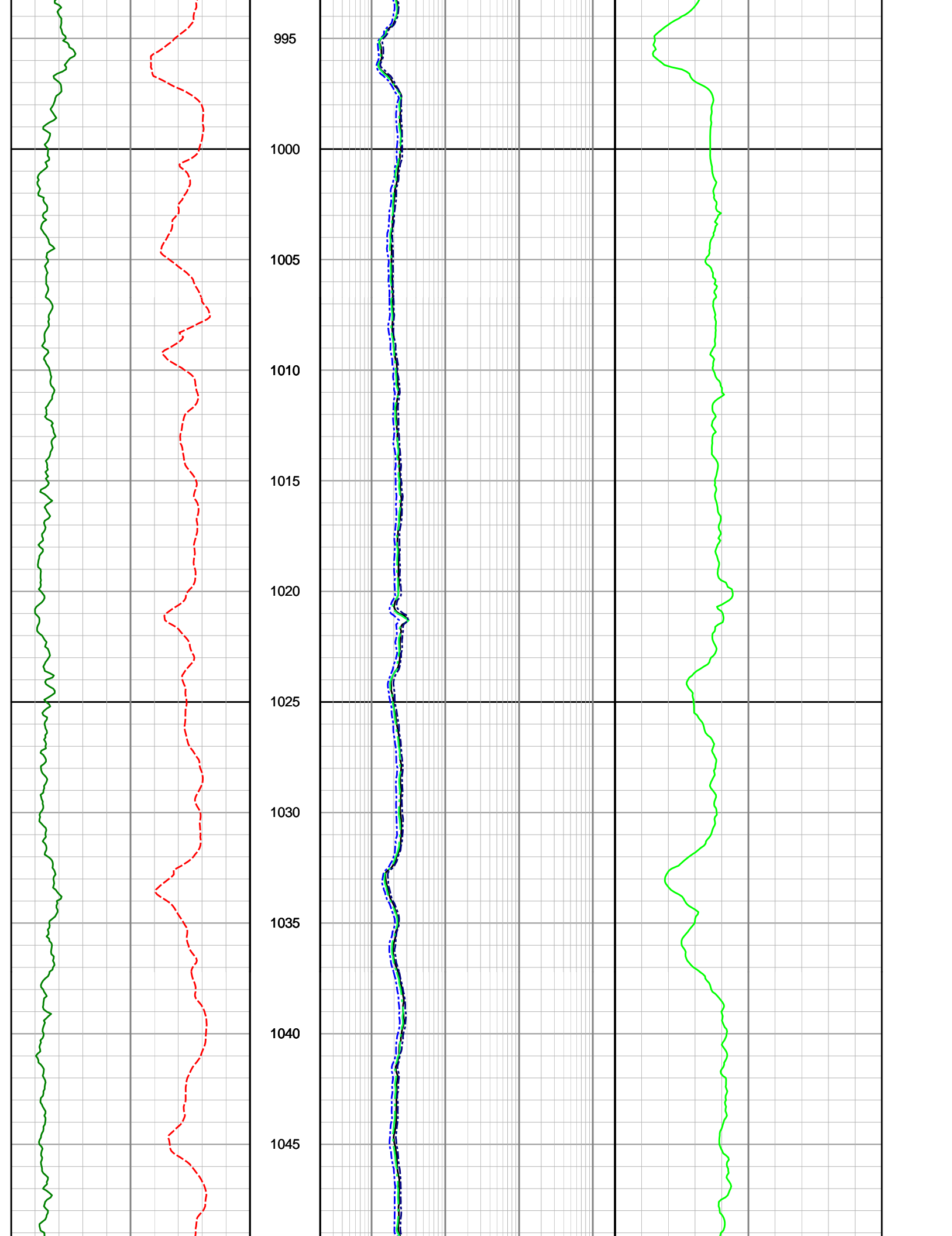


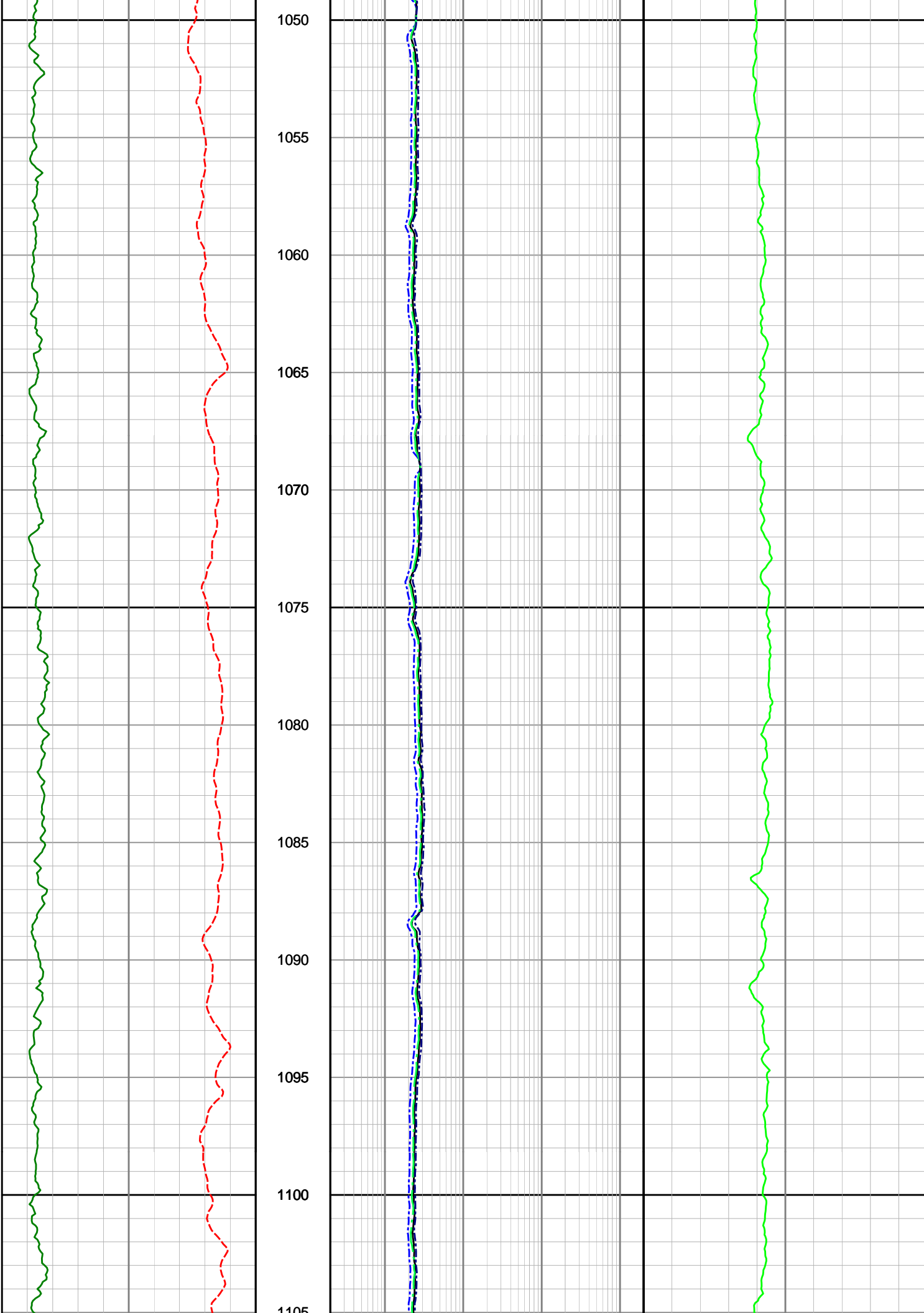


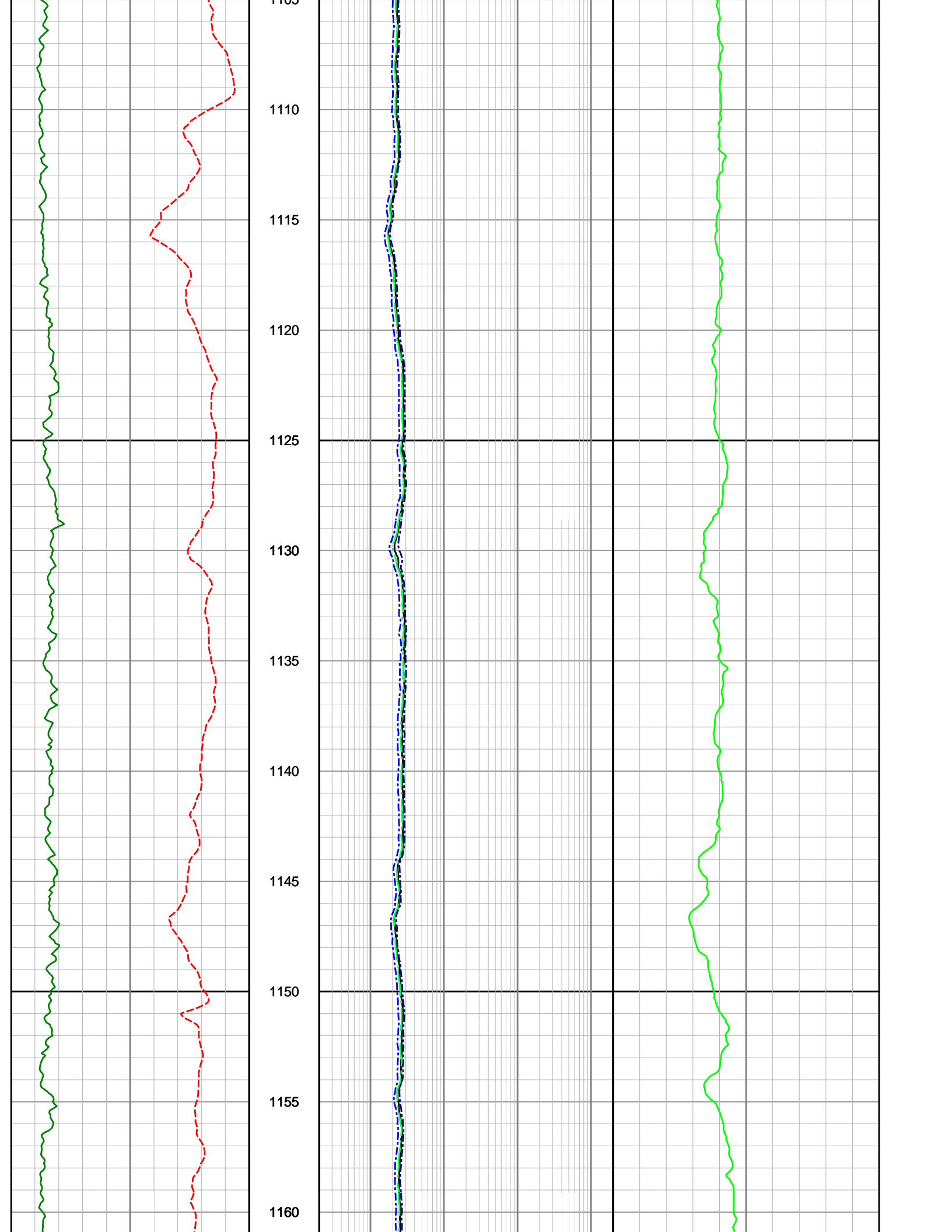


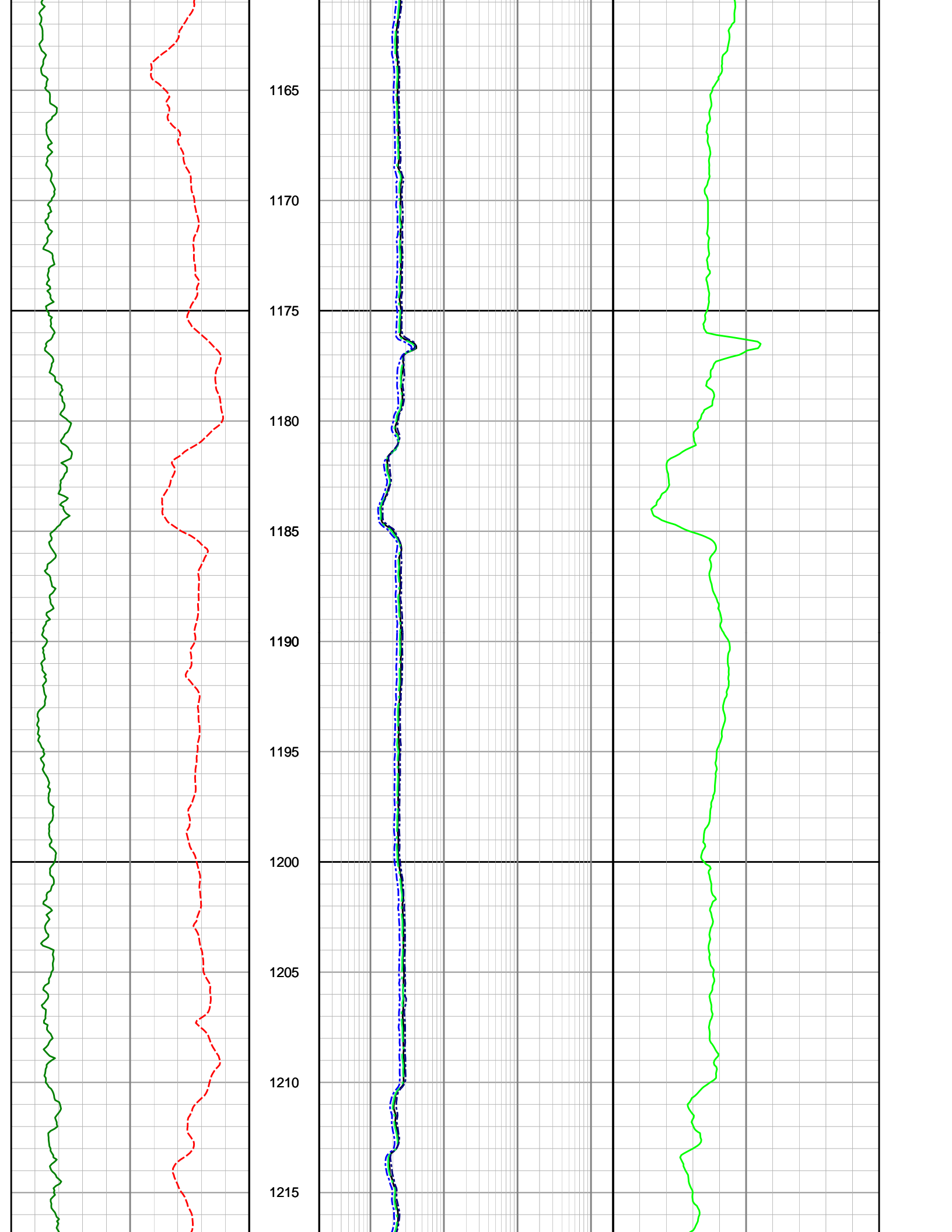


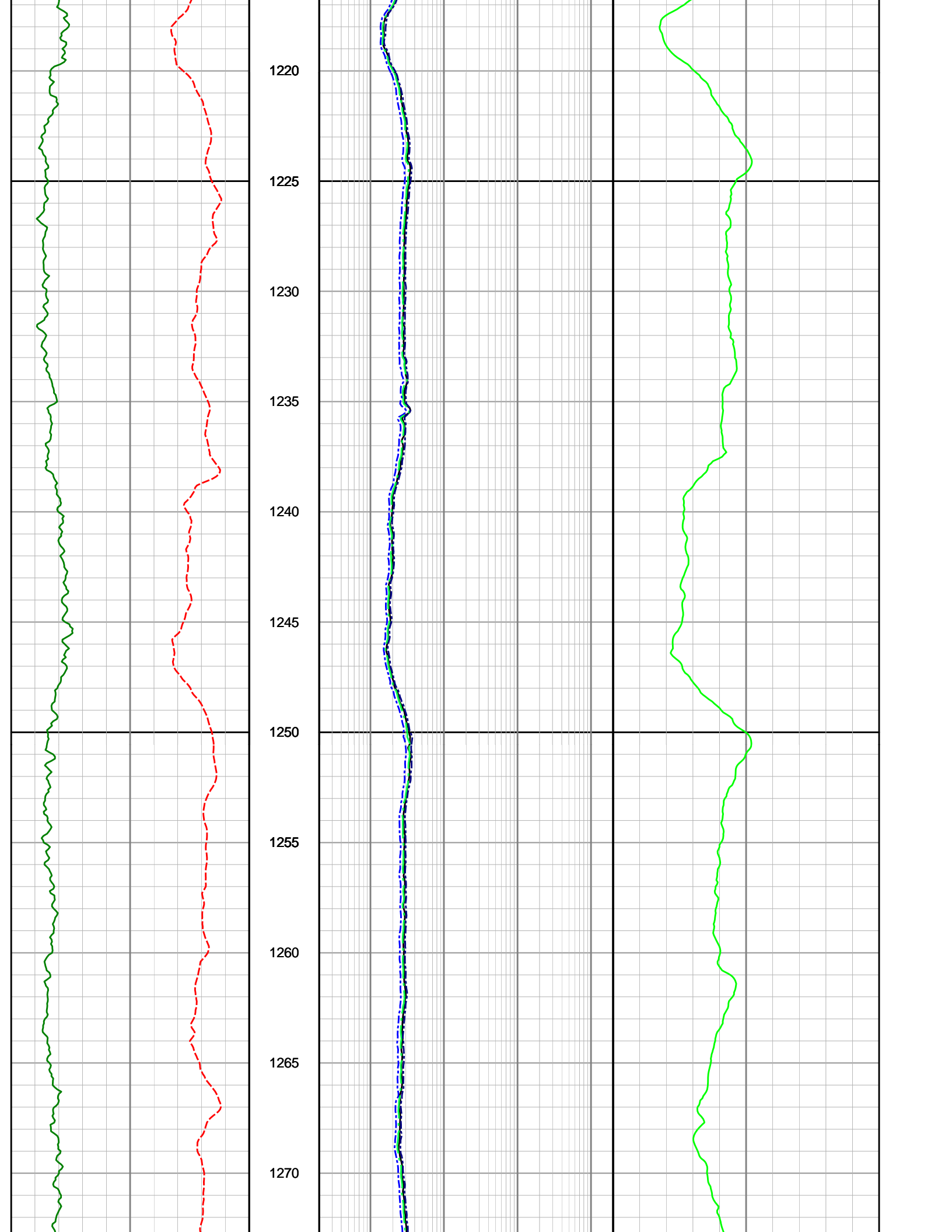


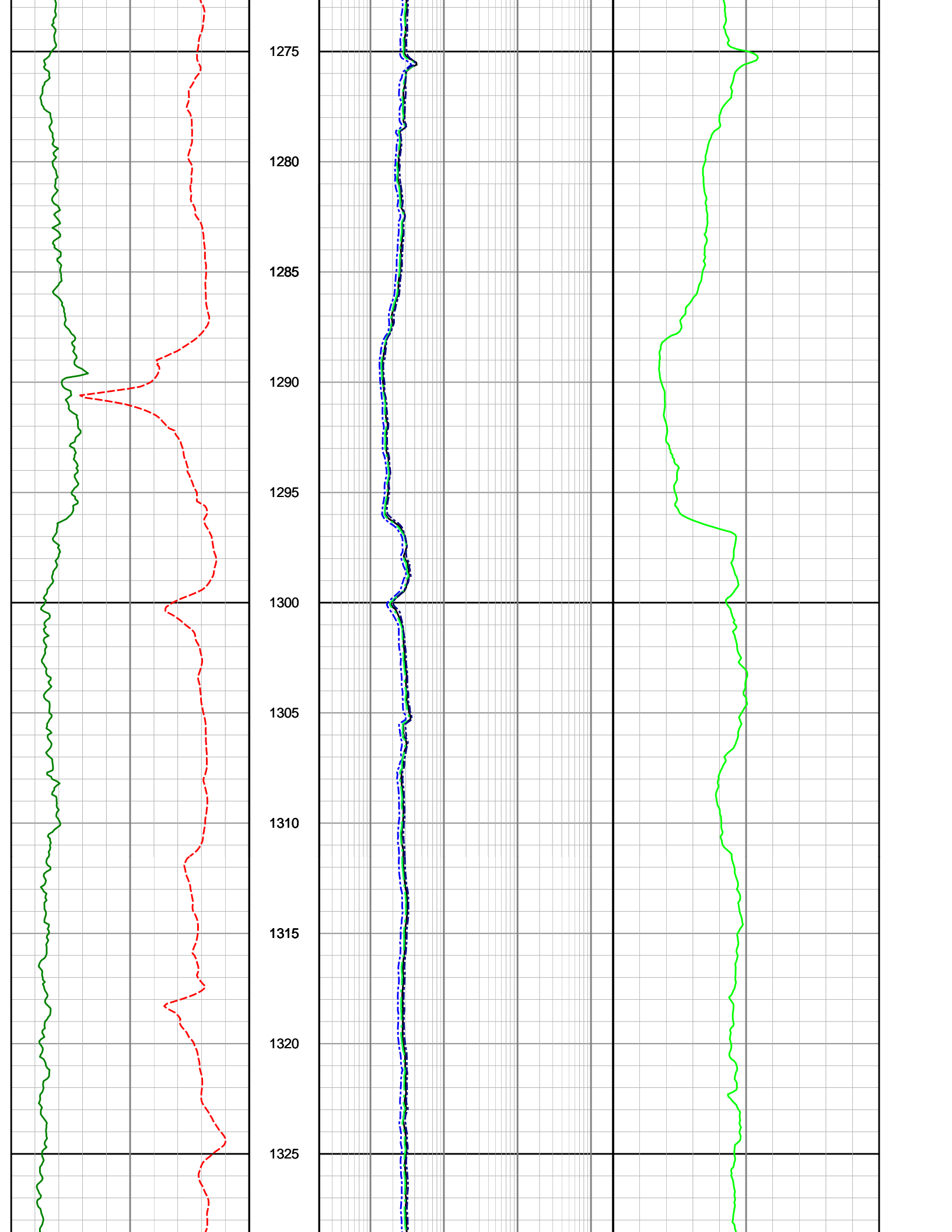


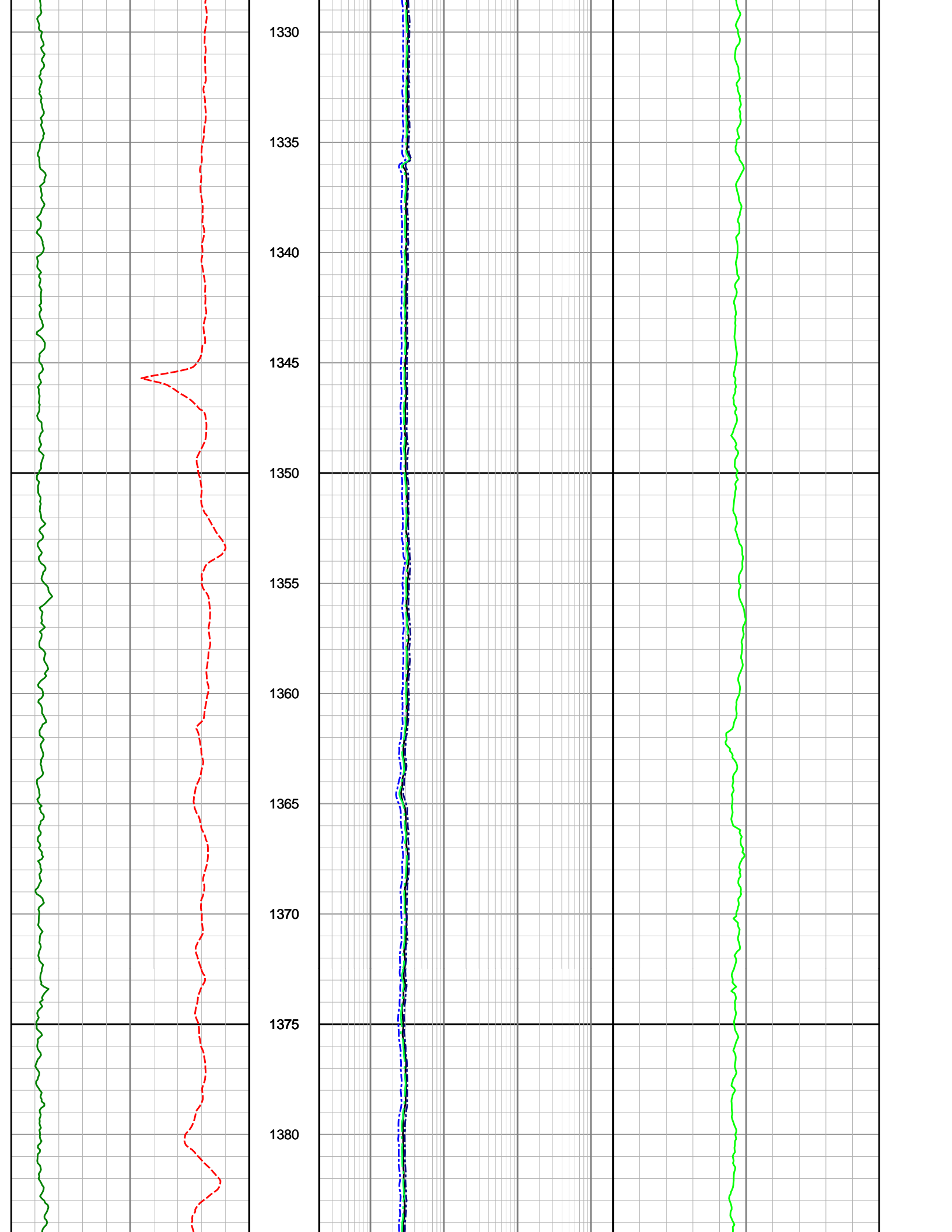


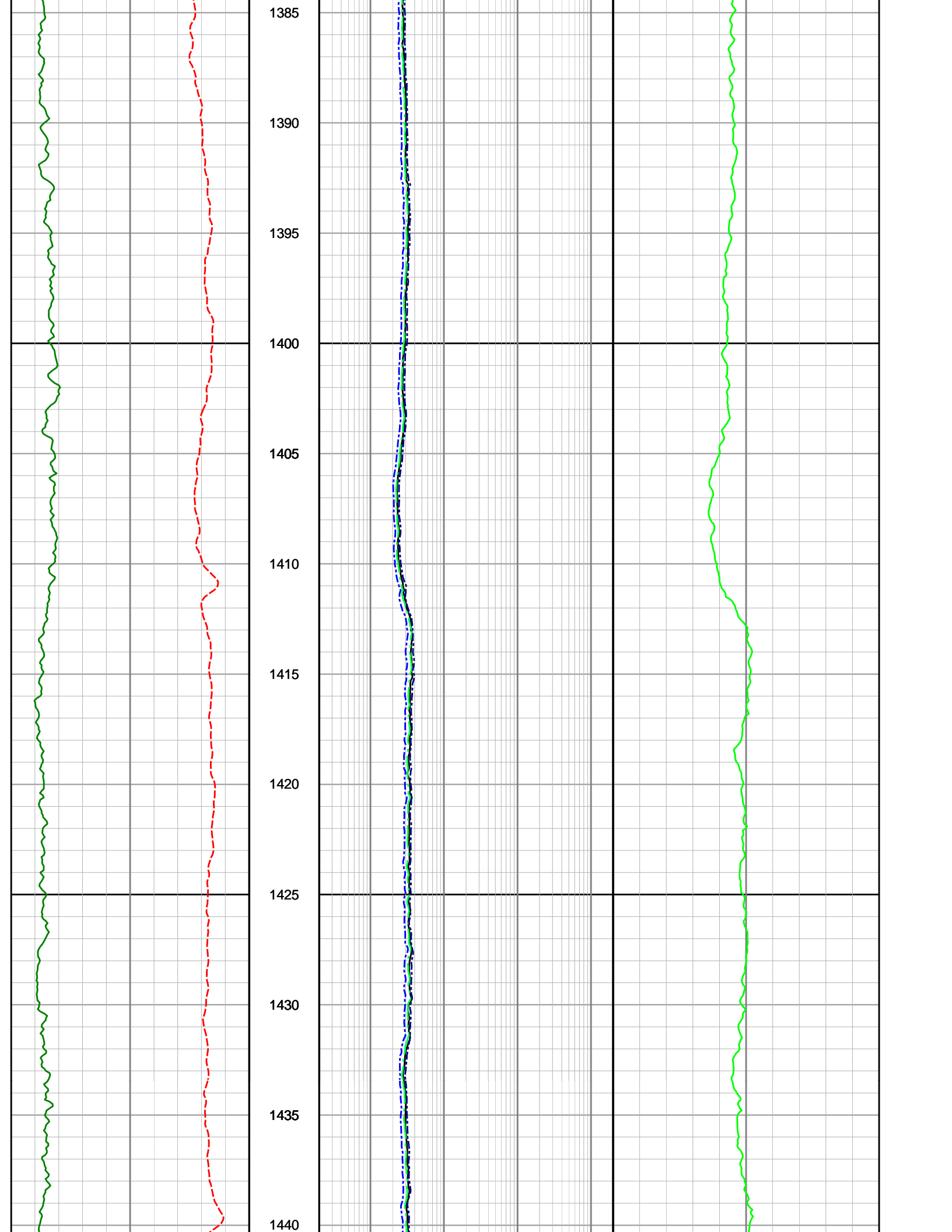


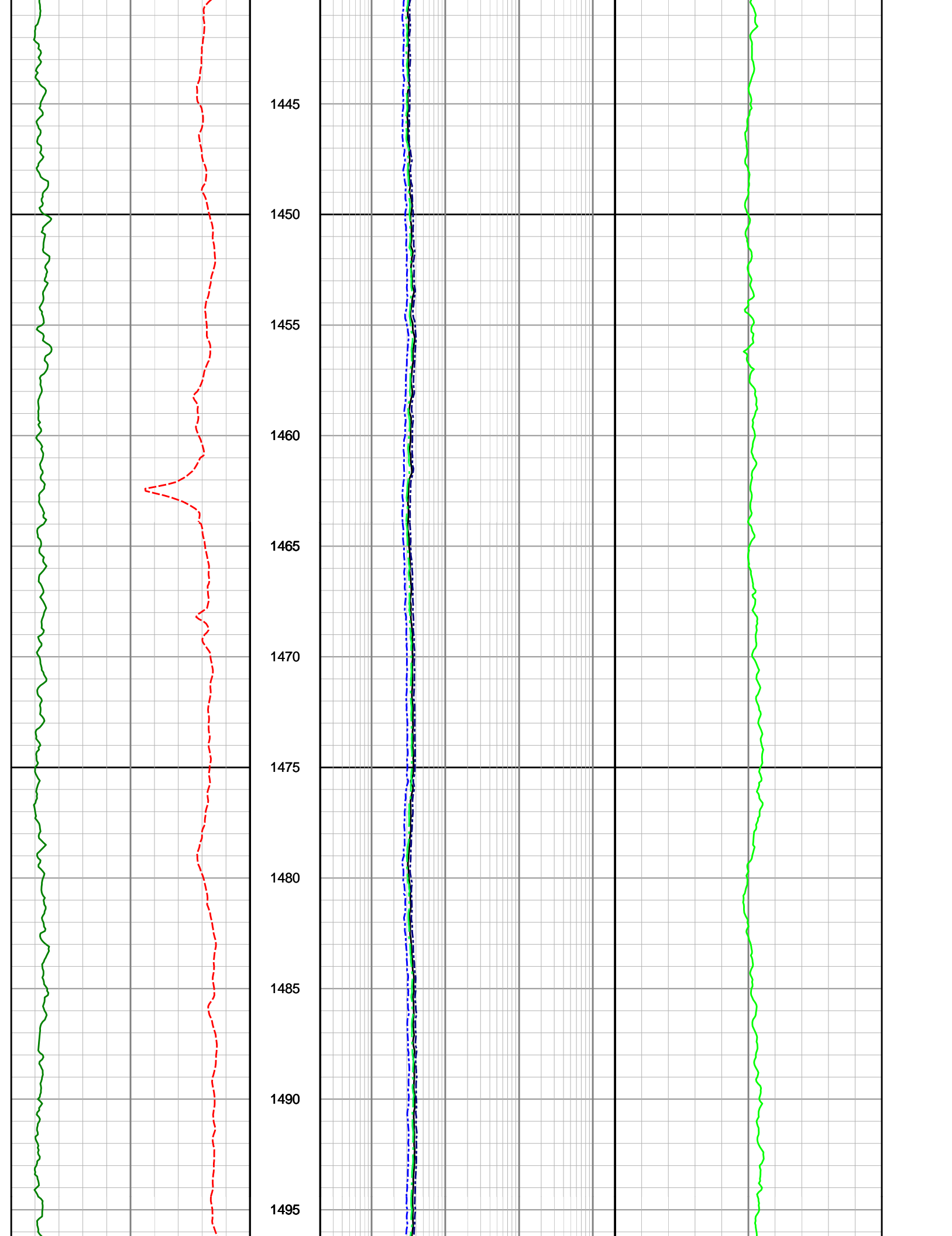


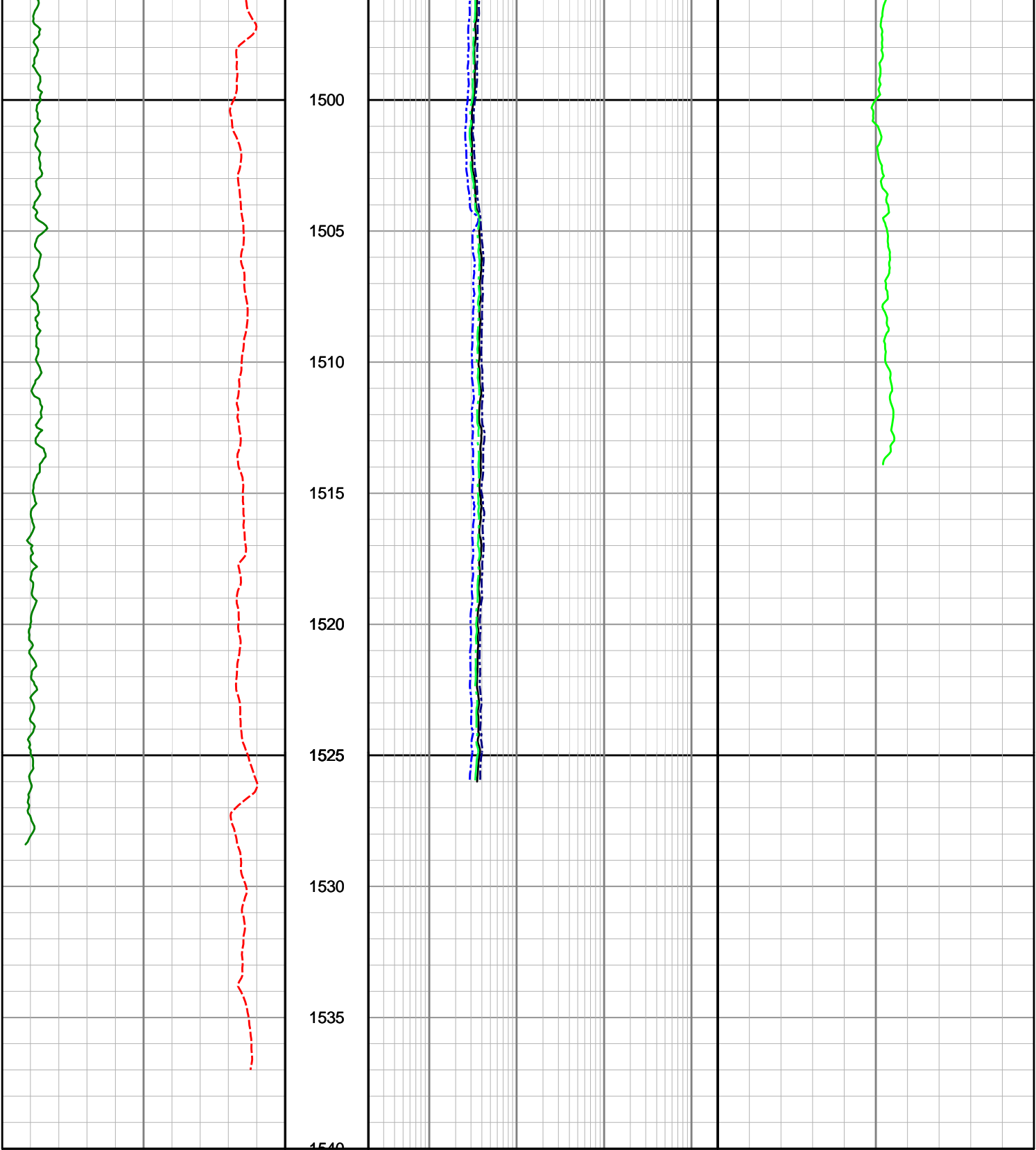












<p>Gamma Ray (SGRC) API</p> <p>0 200</p>	<p>Depth MD</p> <p>1 : 200</p>	<p>Ext Shallow Phase Res (SEXP) ohmm</p> <p>0.2 2000</p>	<p>Compressional Slowness (DTCP) us/ft</p> <p>140 40</p>
<p>Rate of Penetration (SROP) m/hr</p> <p>200 0</p>		<p>Shallow Phase Res (SESP) ohmm</p> <p>0.2 2000</p>	
		<p>Medium Phase Res (SEMP) ohmm</p> <p>0.2 2000</p>	
		<p>Deep Phase Res</p>	

Deep Phase Res
(SEDP)

0.2

ohmm

2000