

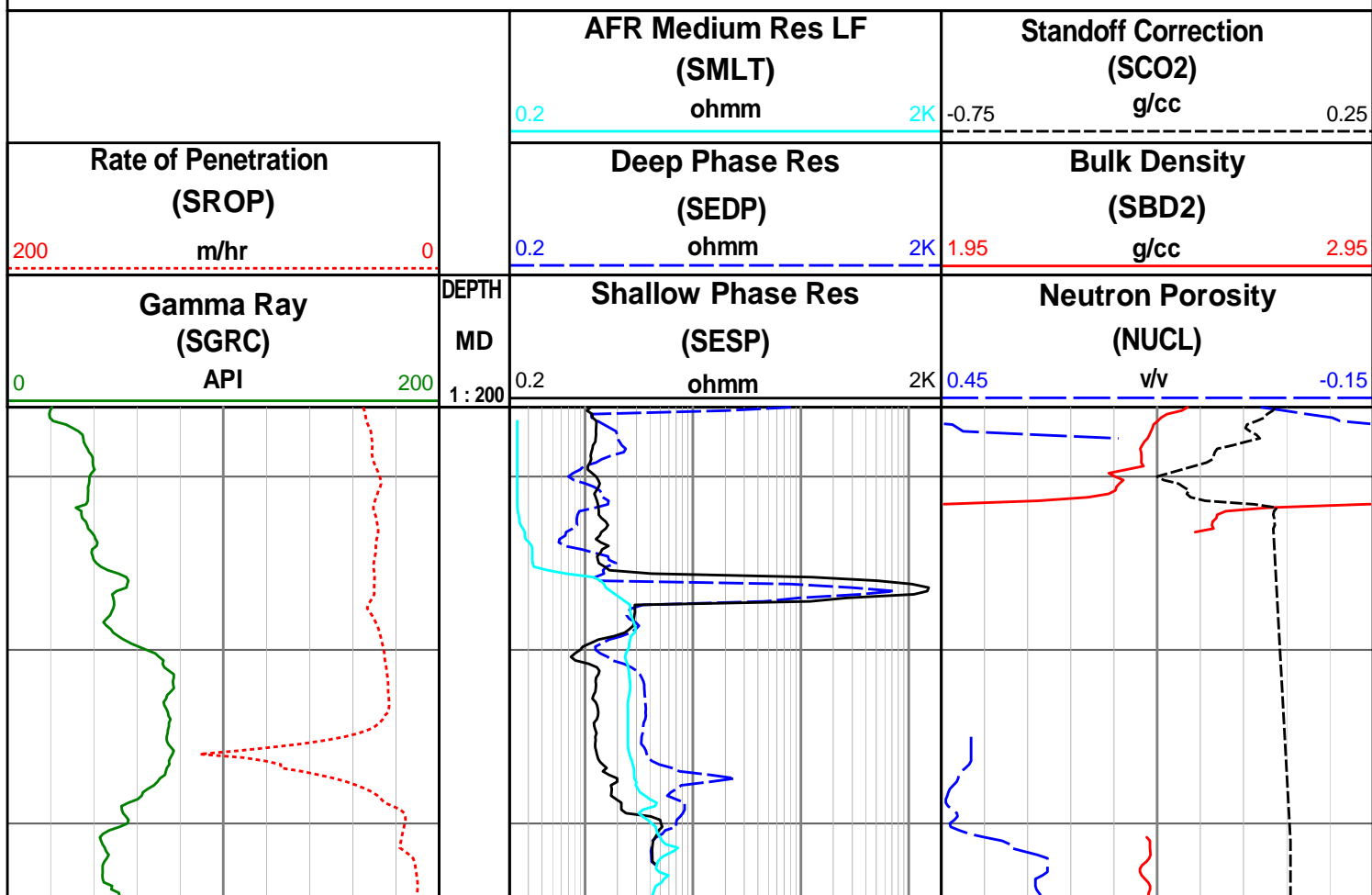
Dory-1 Apache Energy Ltd Realtime LWD Data - Field Copy 216mm Hole Section

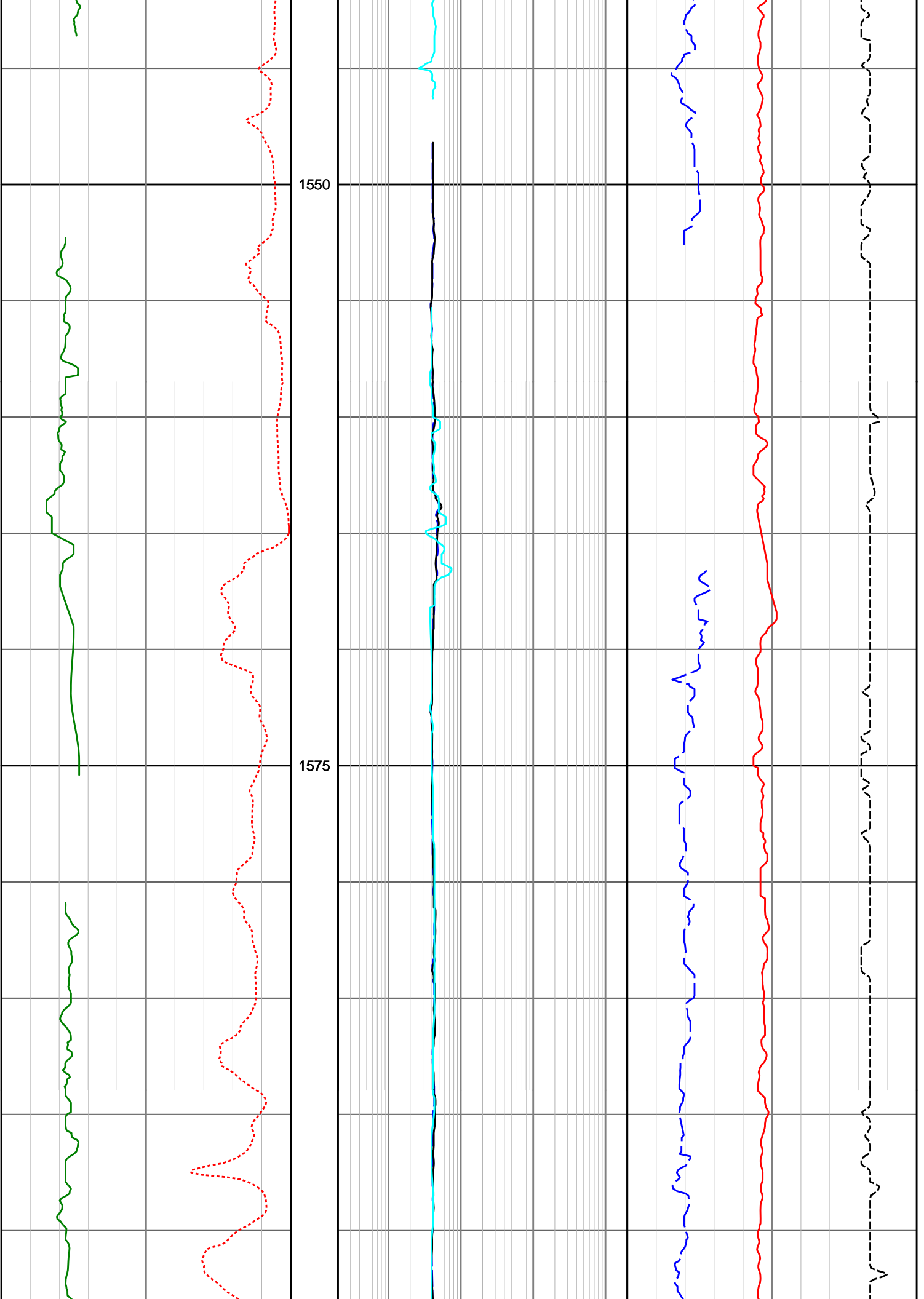
Environmental Parameters:

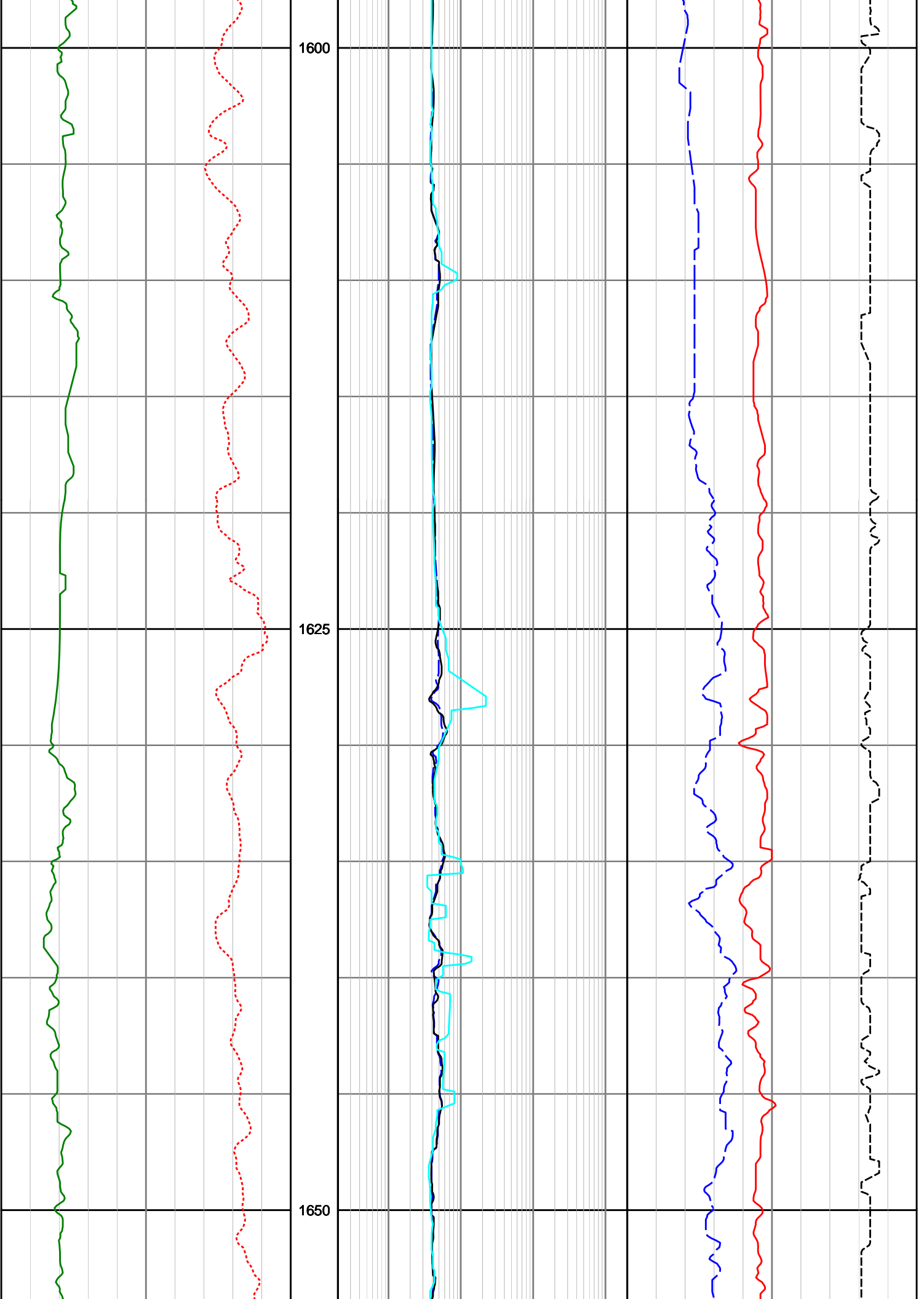
Hole Size = 216mm, Tool Size = 171mm
 Mud Type = Water Based
 MW = 1.15 sg
 Formation Salinity = 25,000 ppm Cl
 Mud Salinity = 48700 - 52100 ppm Cl
 Matrix Density = 2.71 g/cc
 Fluid Density = 1.00 g/cc
 Rm = 0.058, 0.053 ohm
 Rmf = 0.040, 0.037 ohm
 Rmc = 0.070, 0.066 ohm

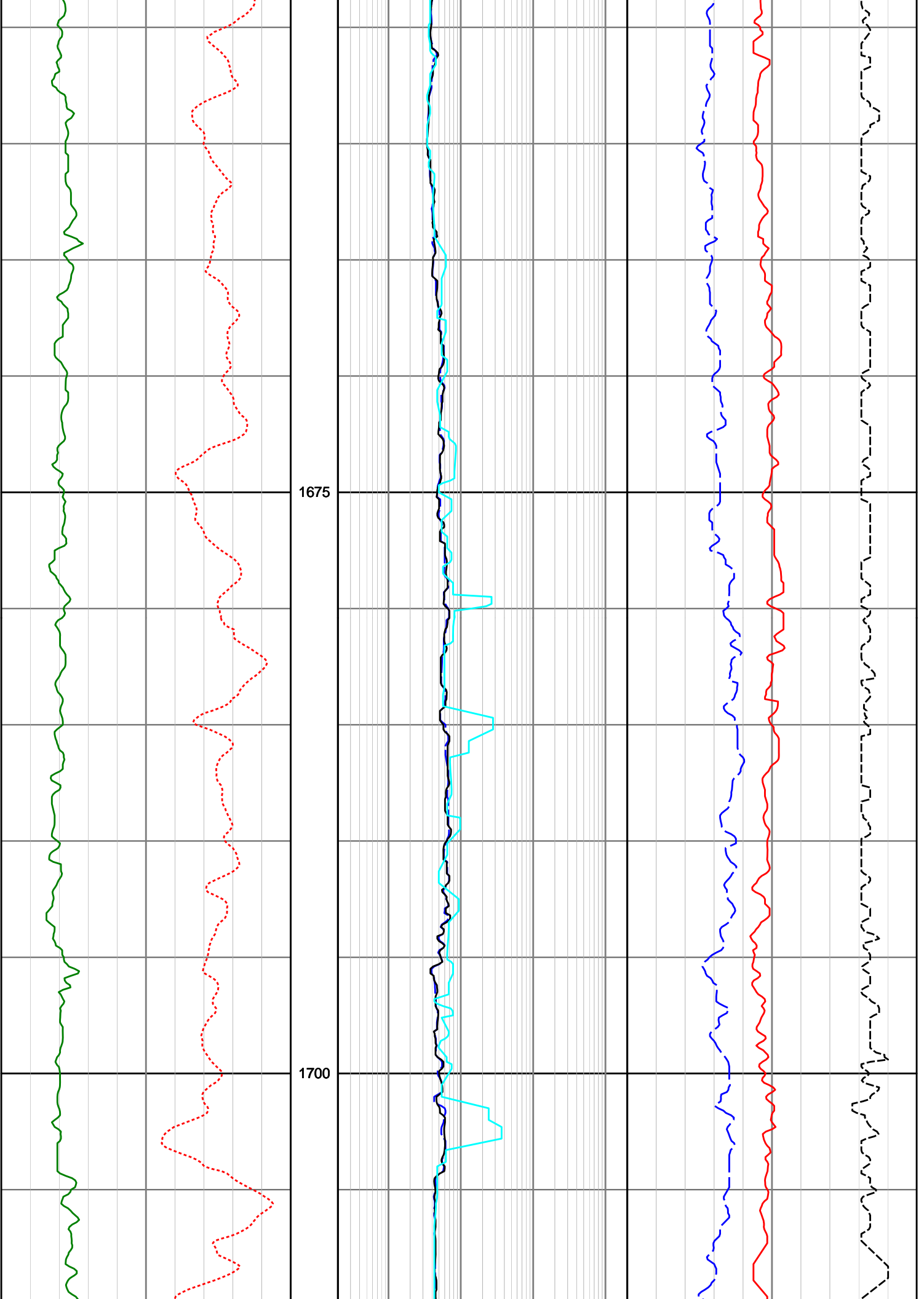
Remarks:

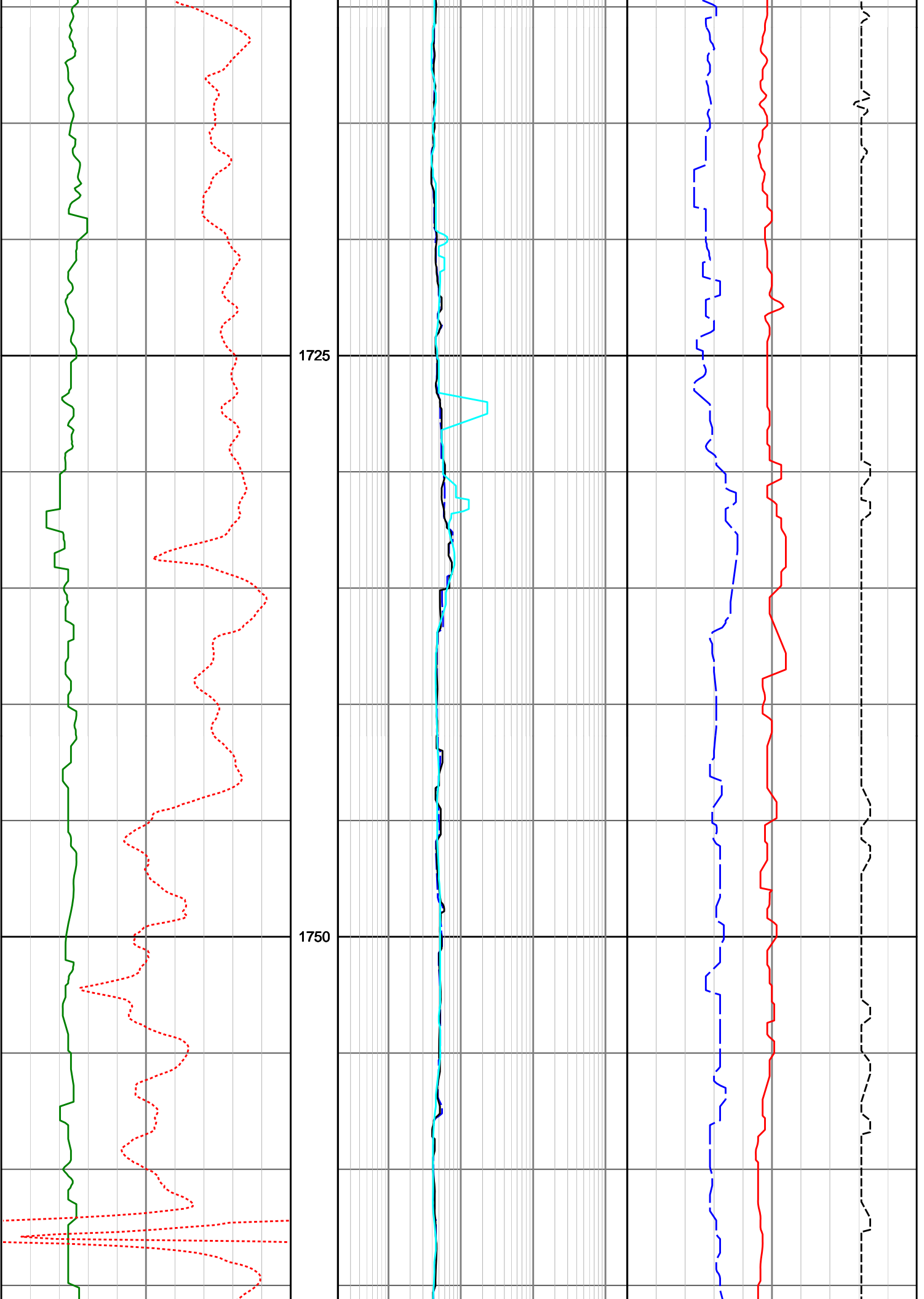
1. Gamma Ray and Neutron Porosity have been environmentally corrected using the listed parameters where appropriate.
2. Depth sensor changed from geolograph to draw-works encoder for interval from 1556 - 2258 mMDRT. This does not account for movement of the top drive compensator.
3. Data gap from 2530 - 2550 mMDRT due to poor detection caused by malfunctioning pump stroke proximity switch.
4. All other data gaps attributable to poor detection.
5. AFR Resistivity sensor malfunction at 2272.70 mMDRT.

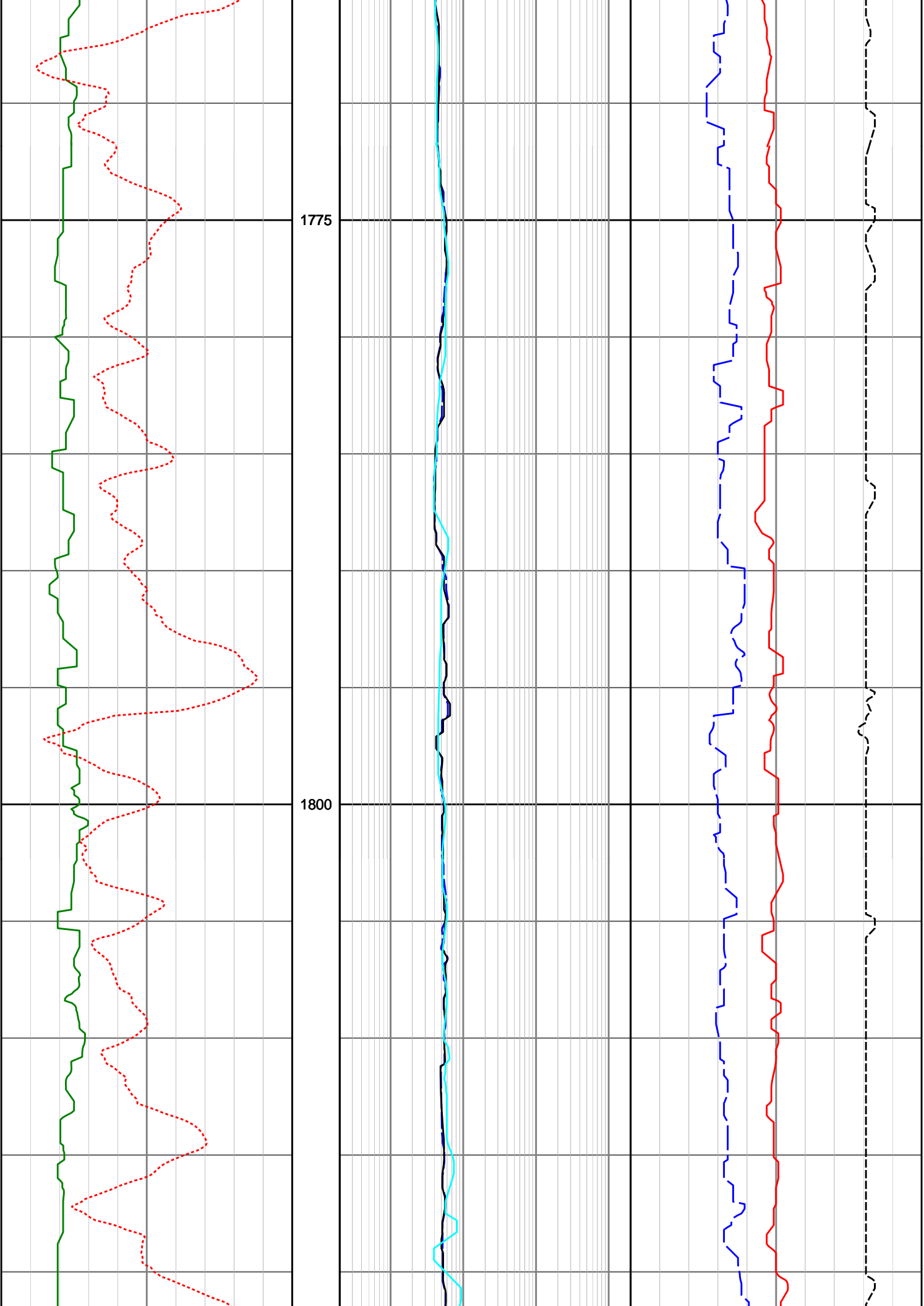


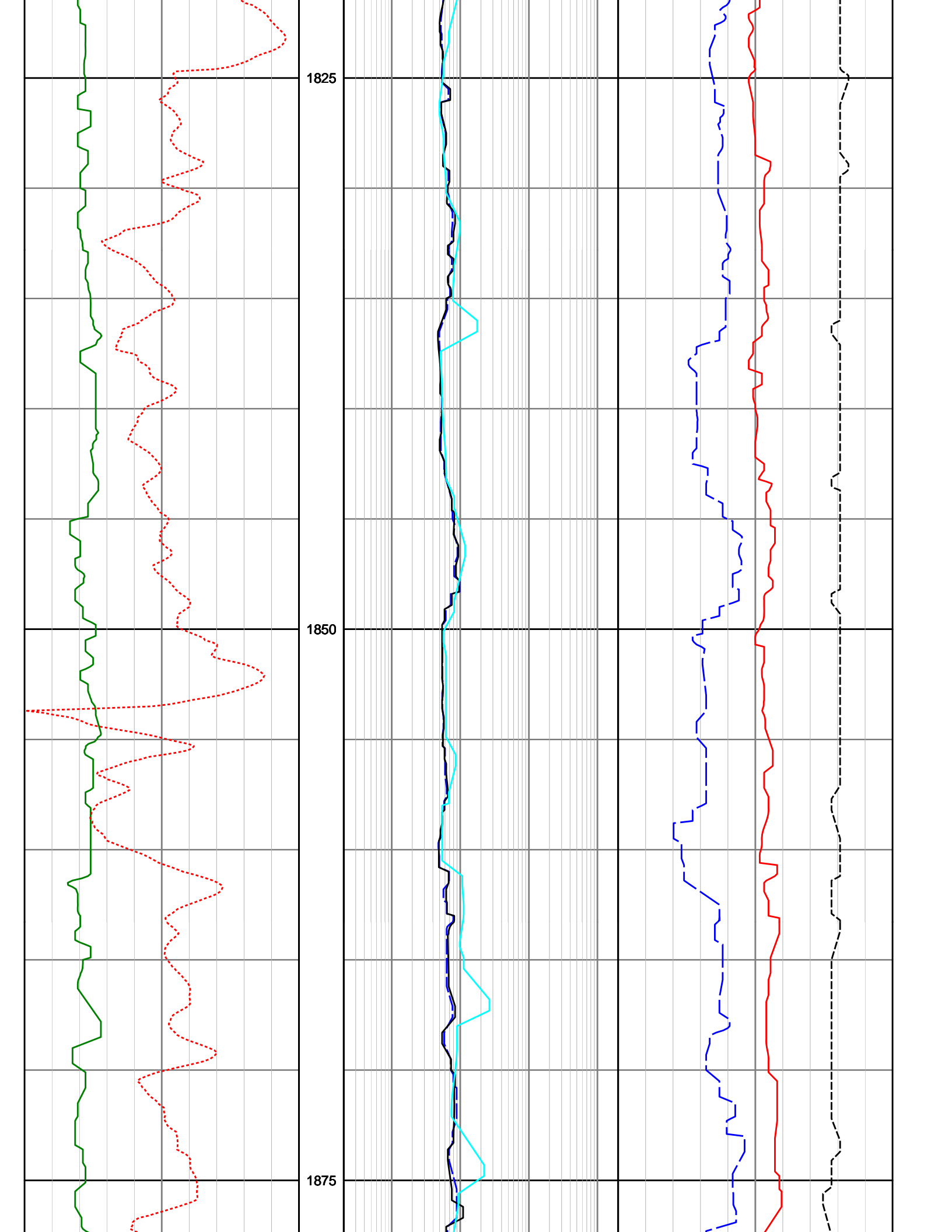


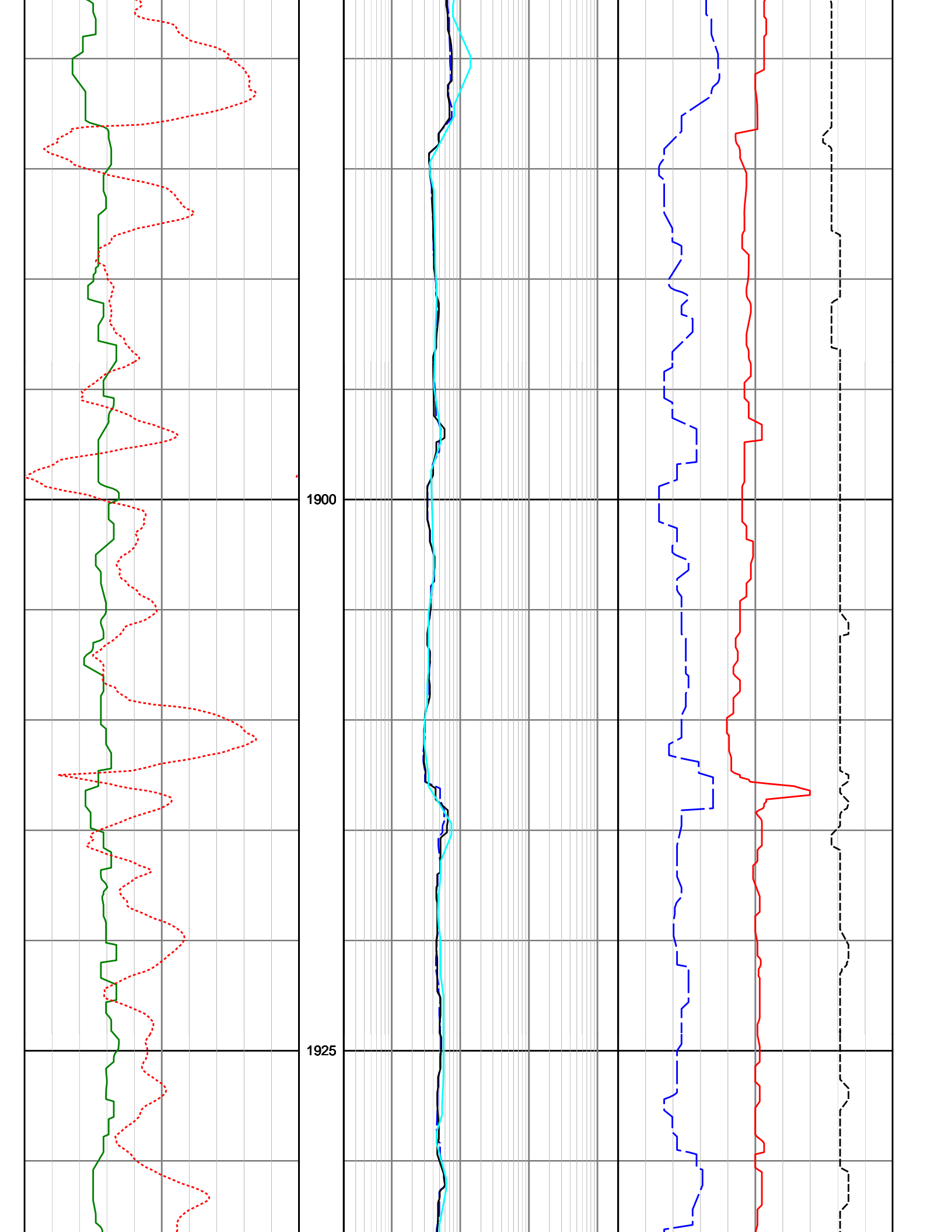


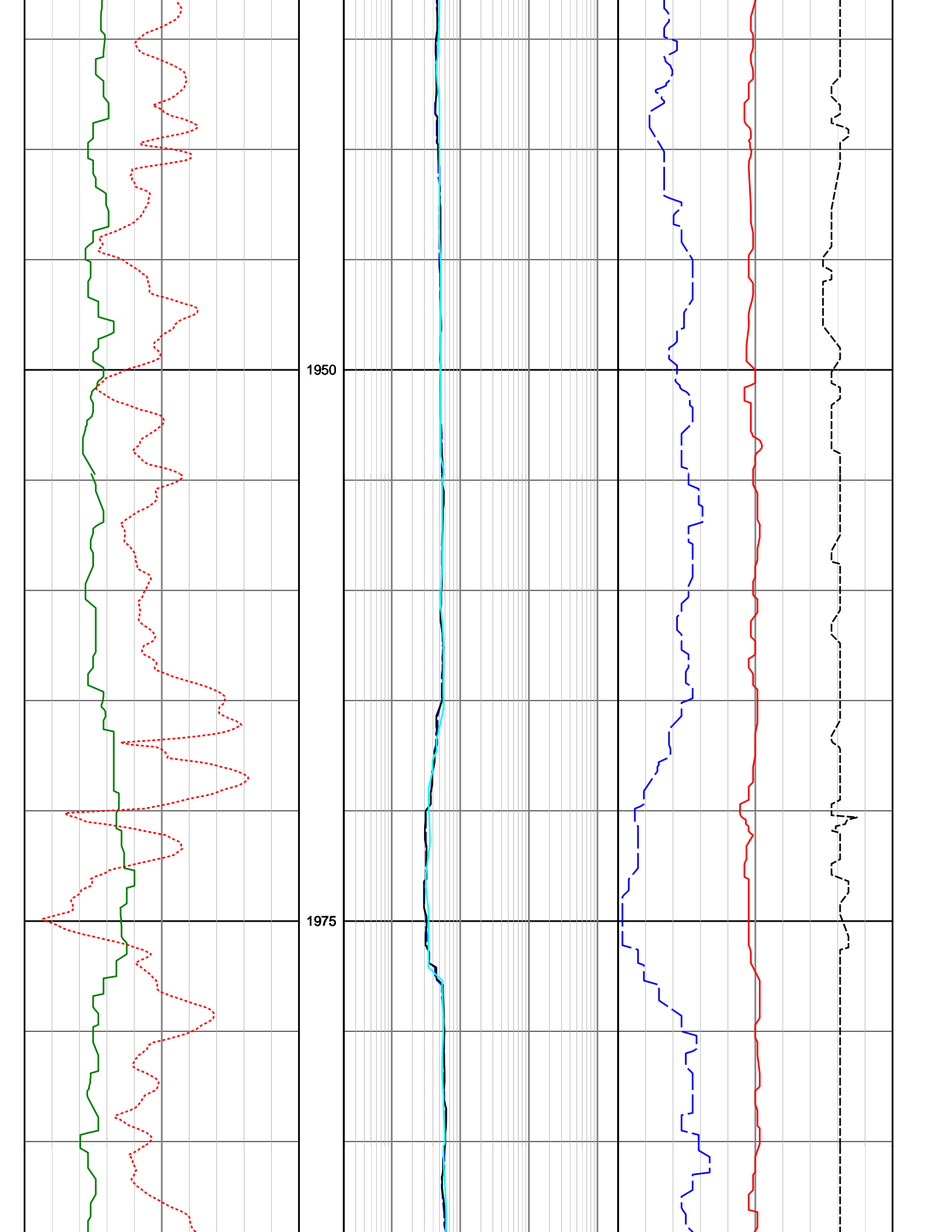


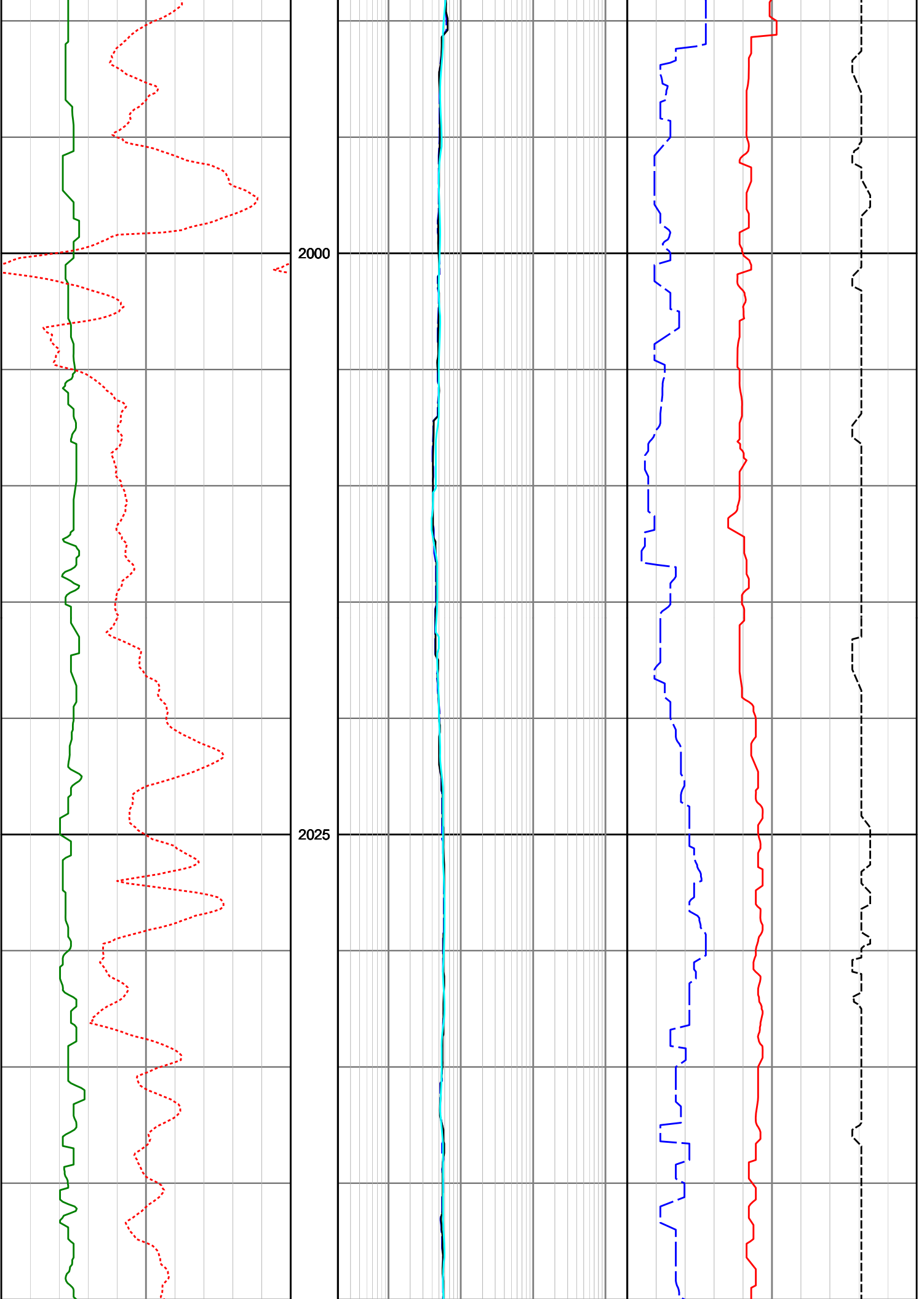


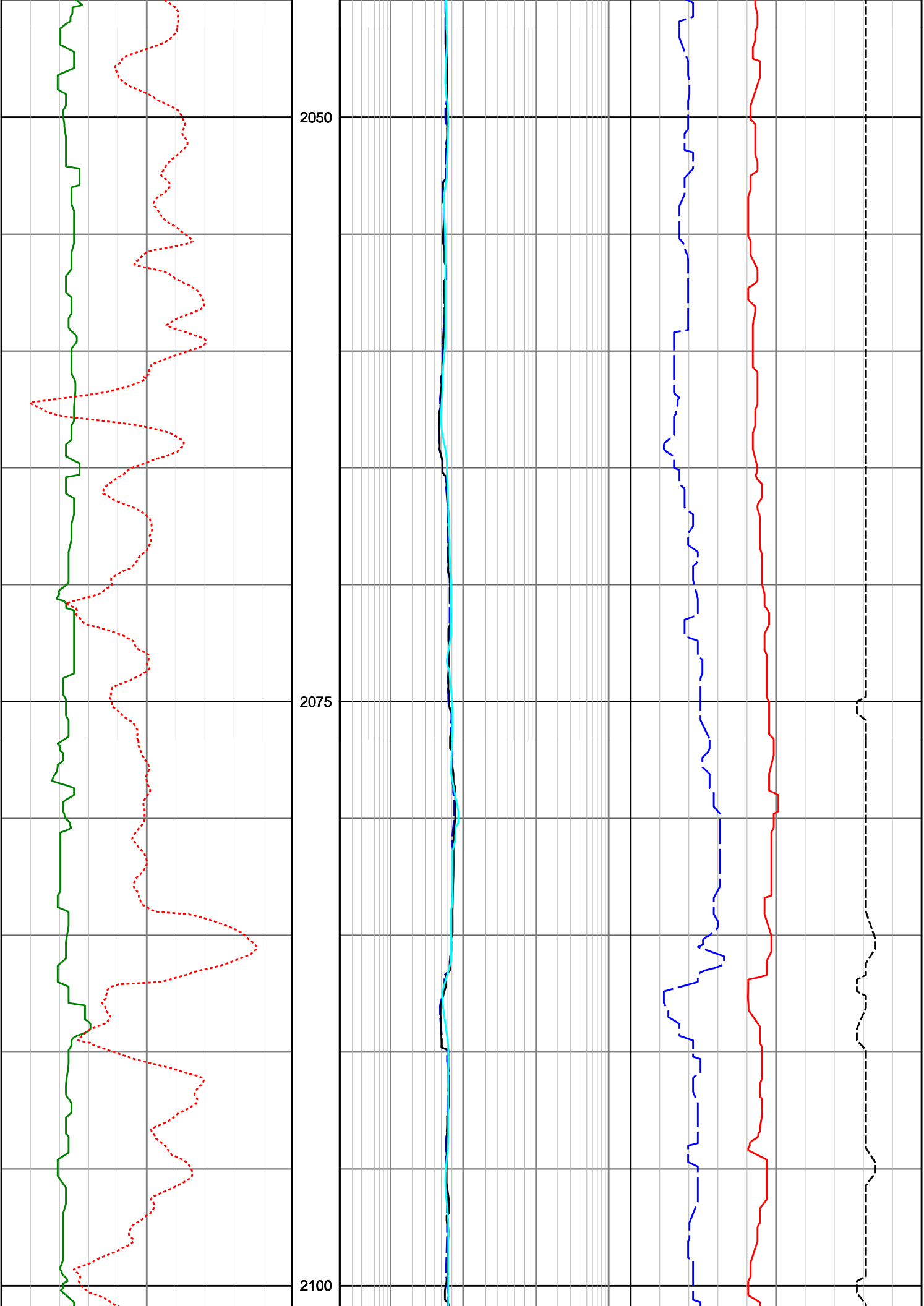


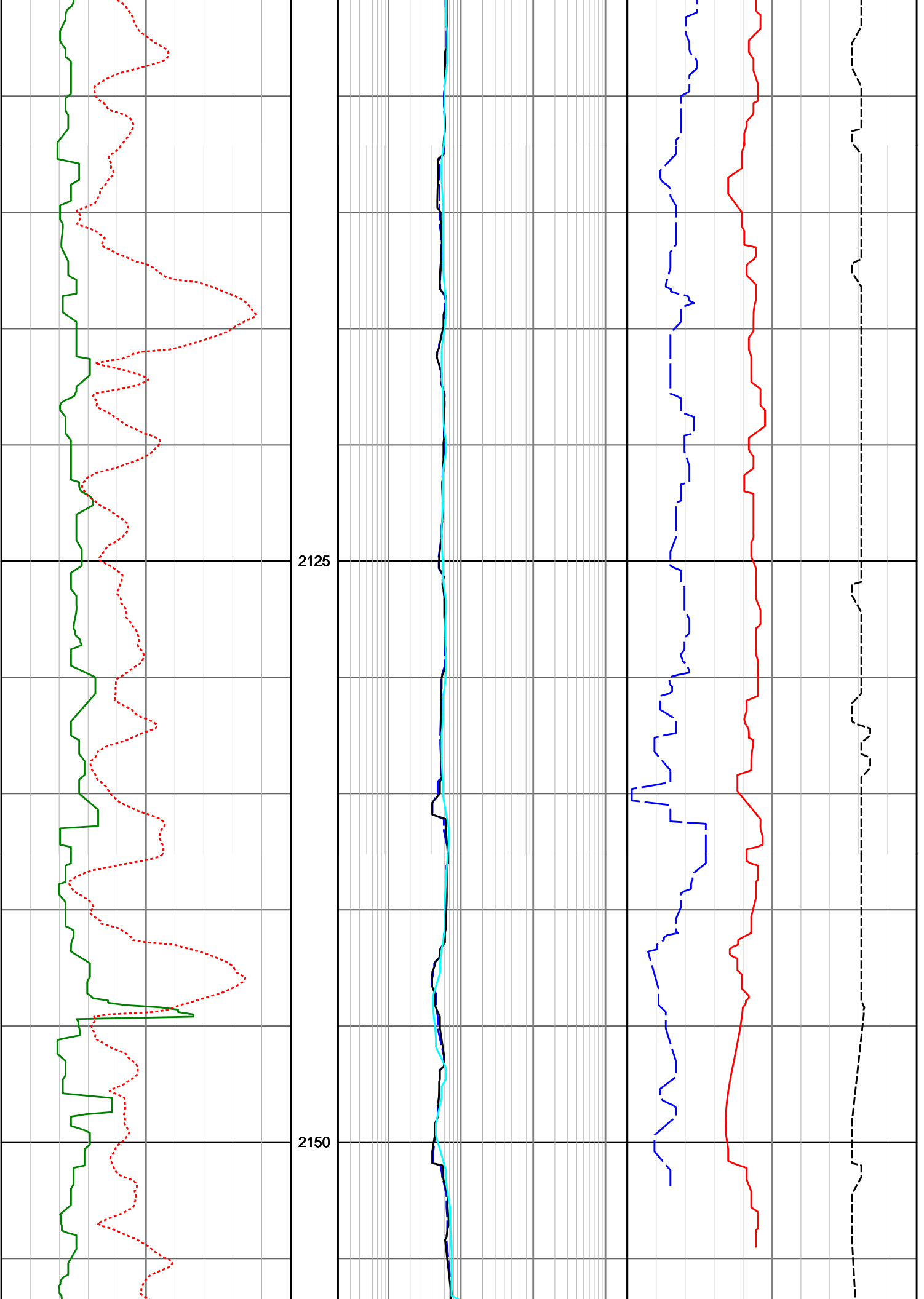


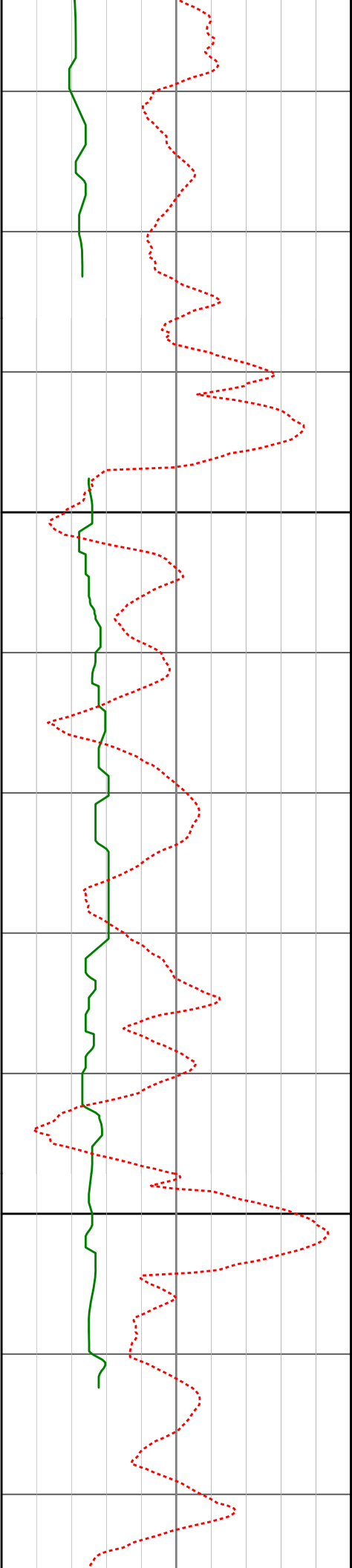






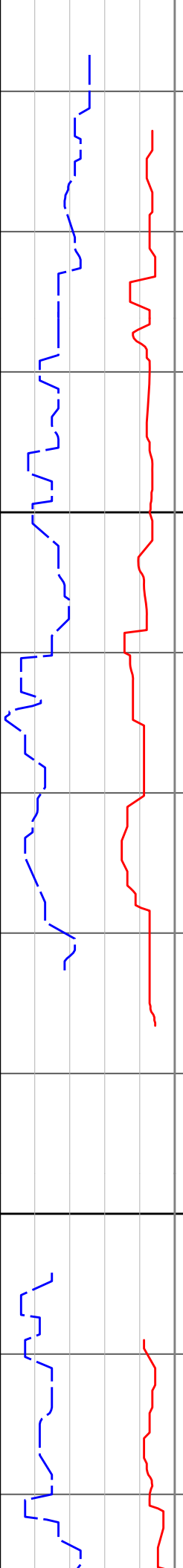
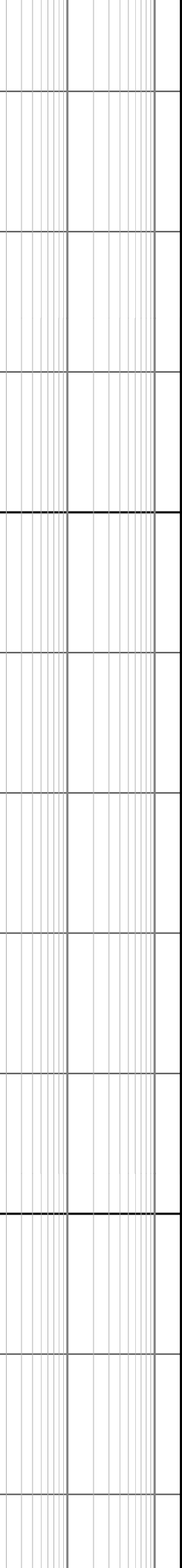
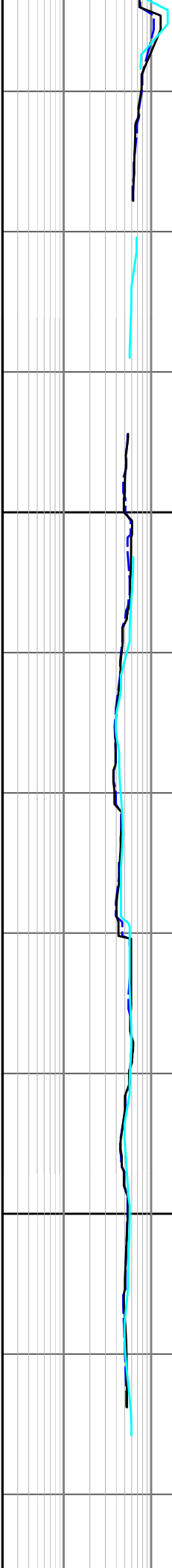


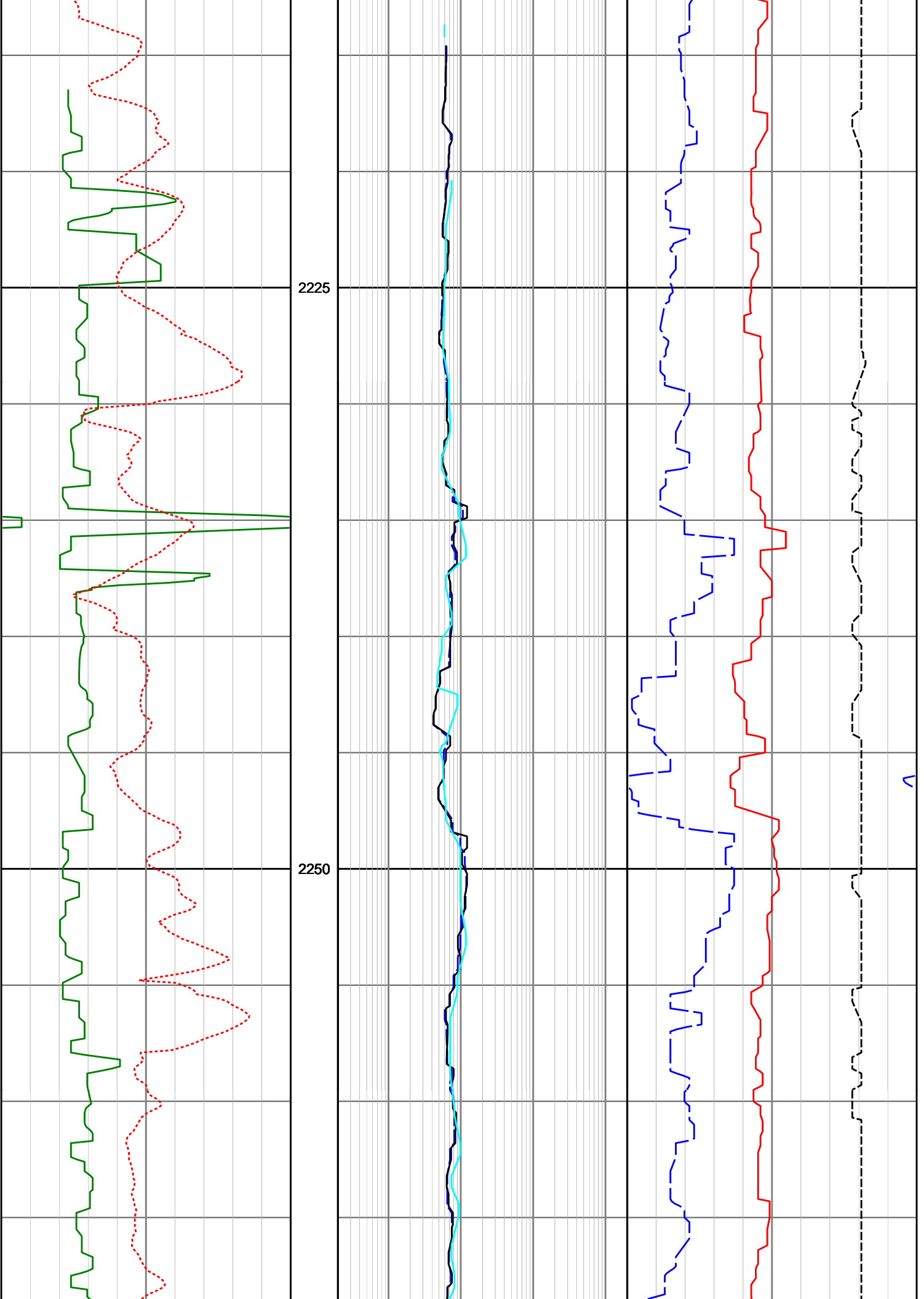


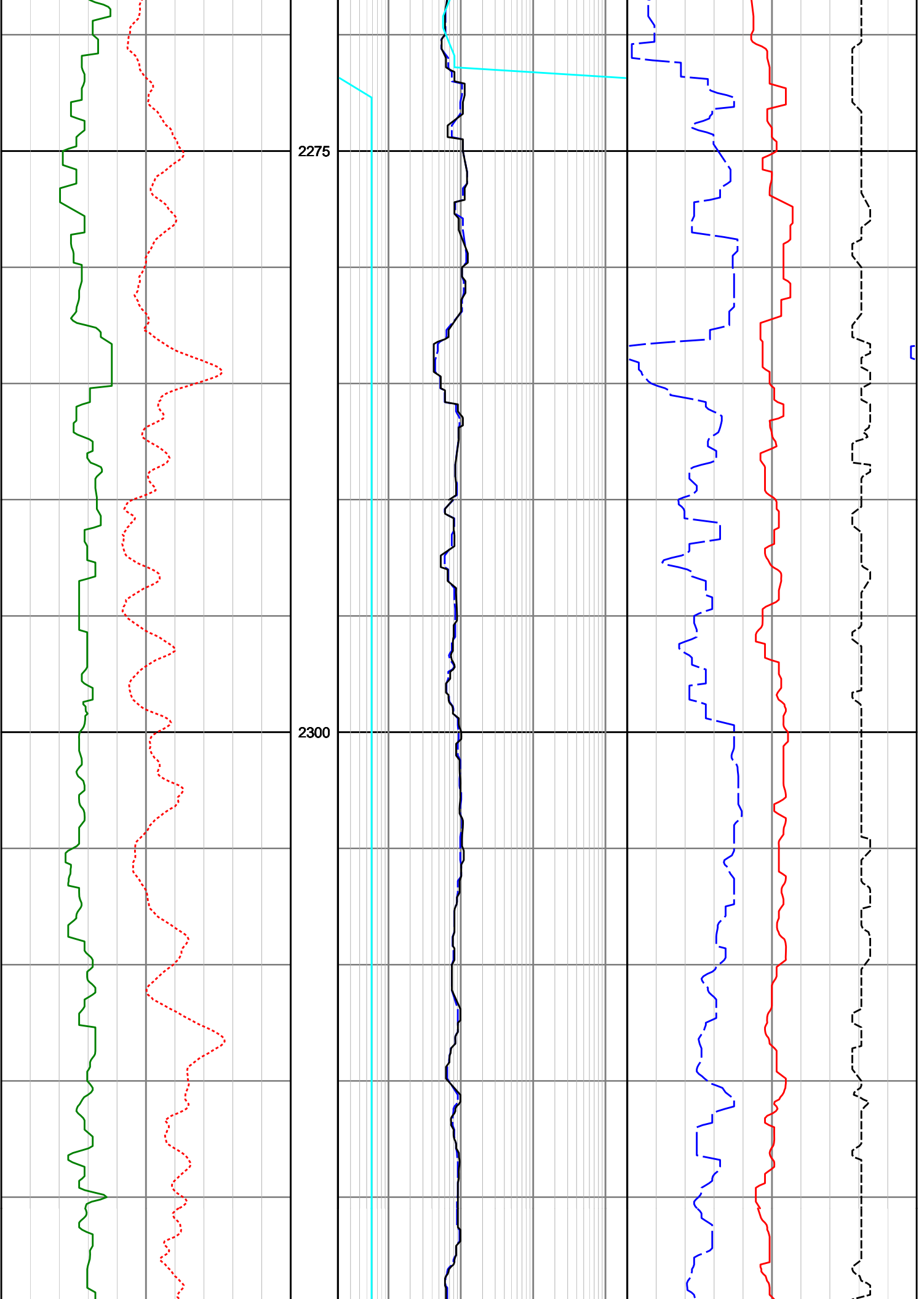


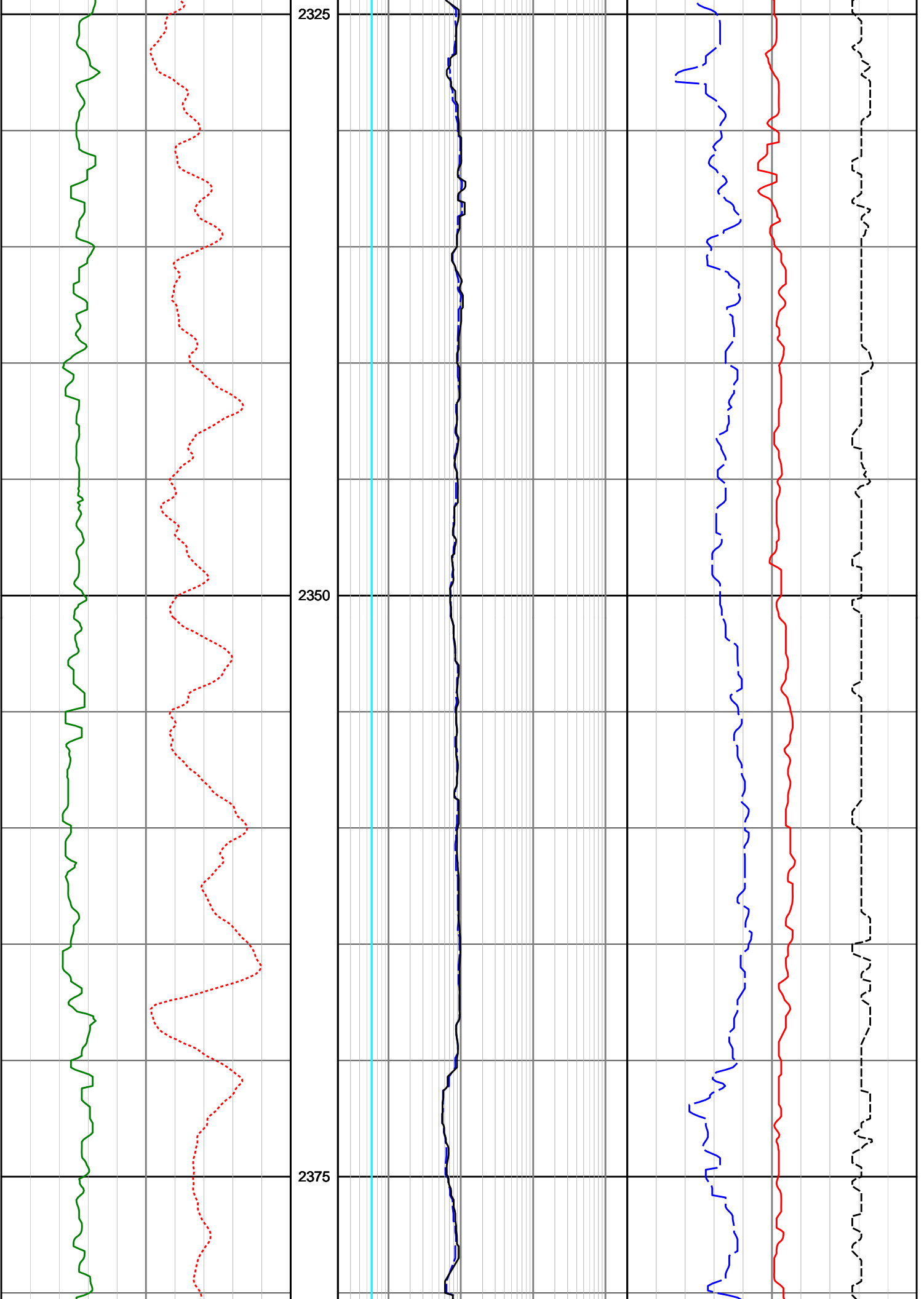
2175

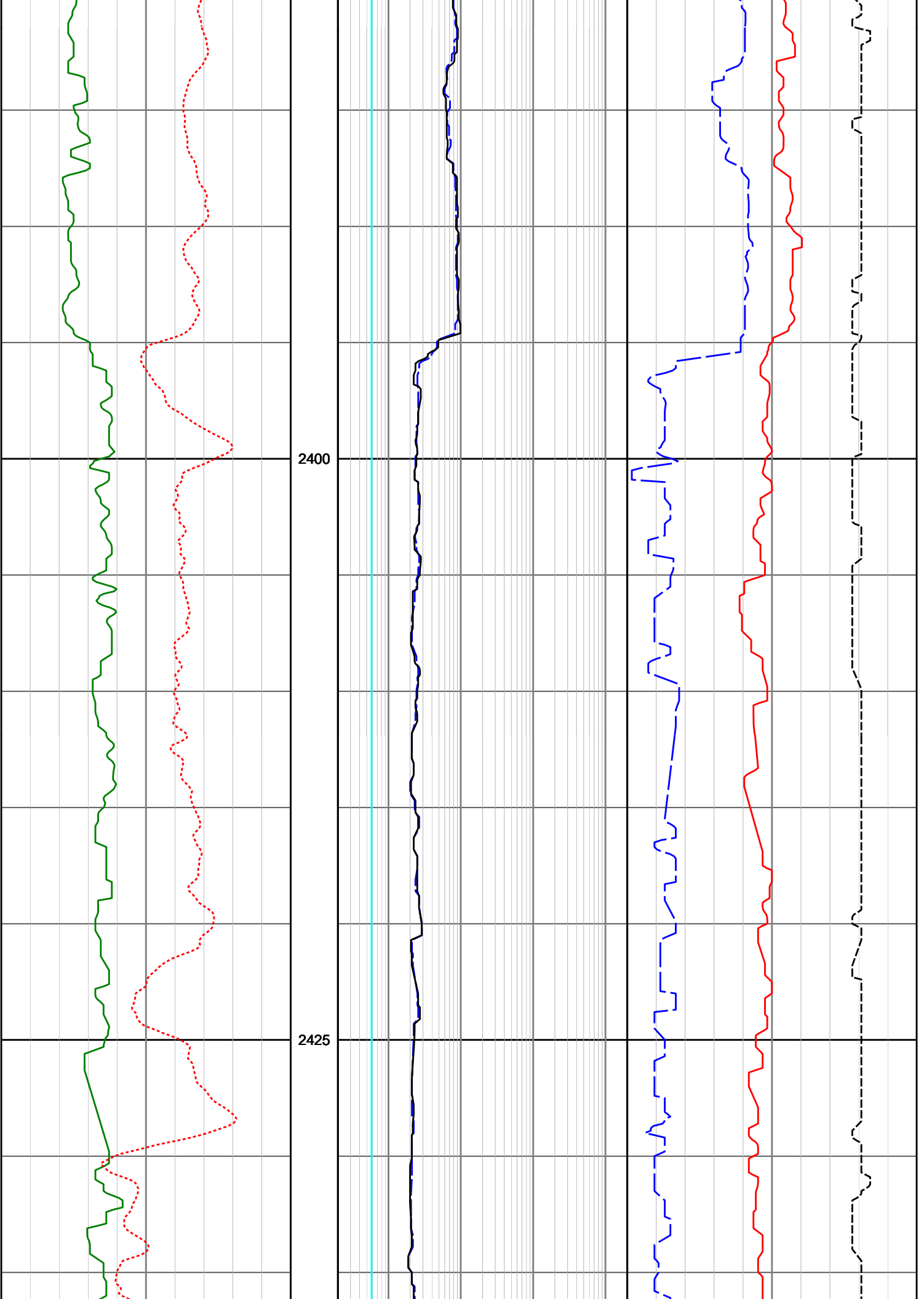
2200

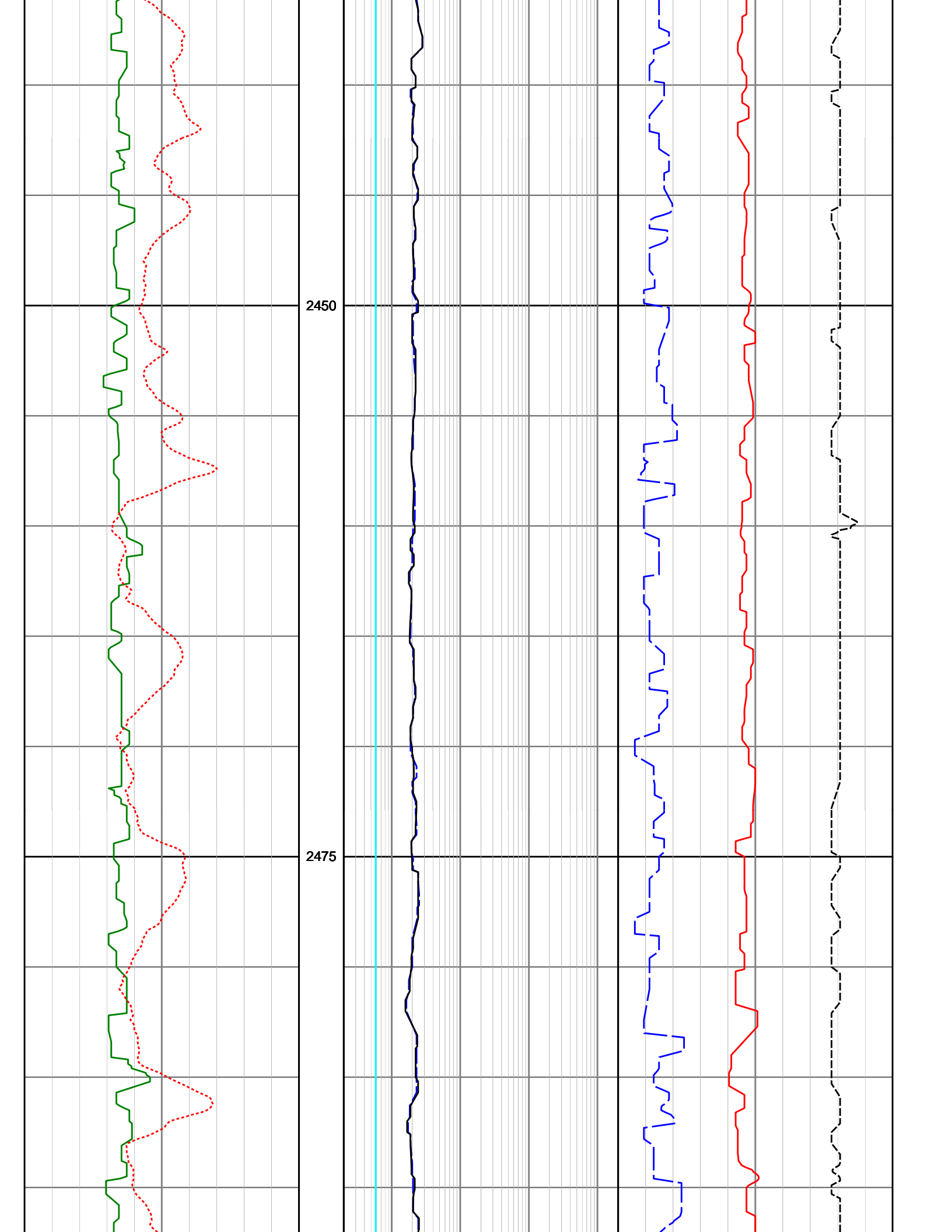


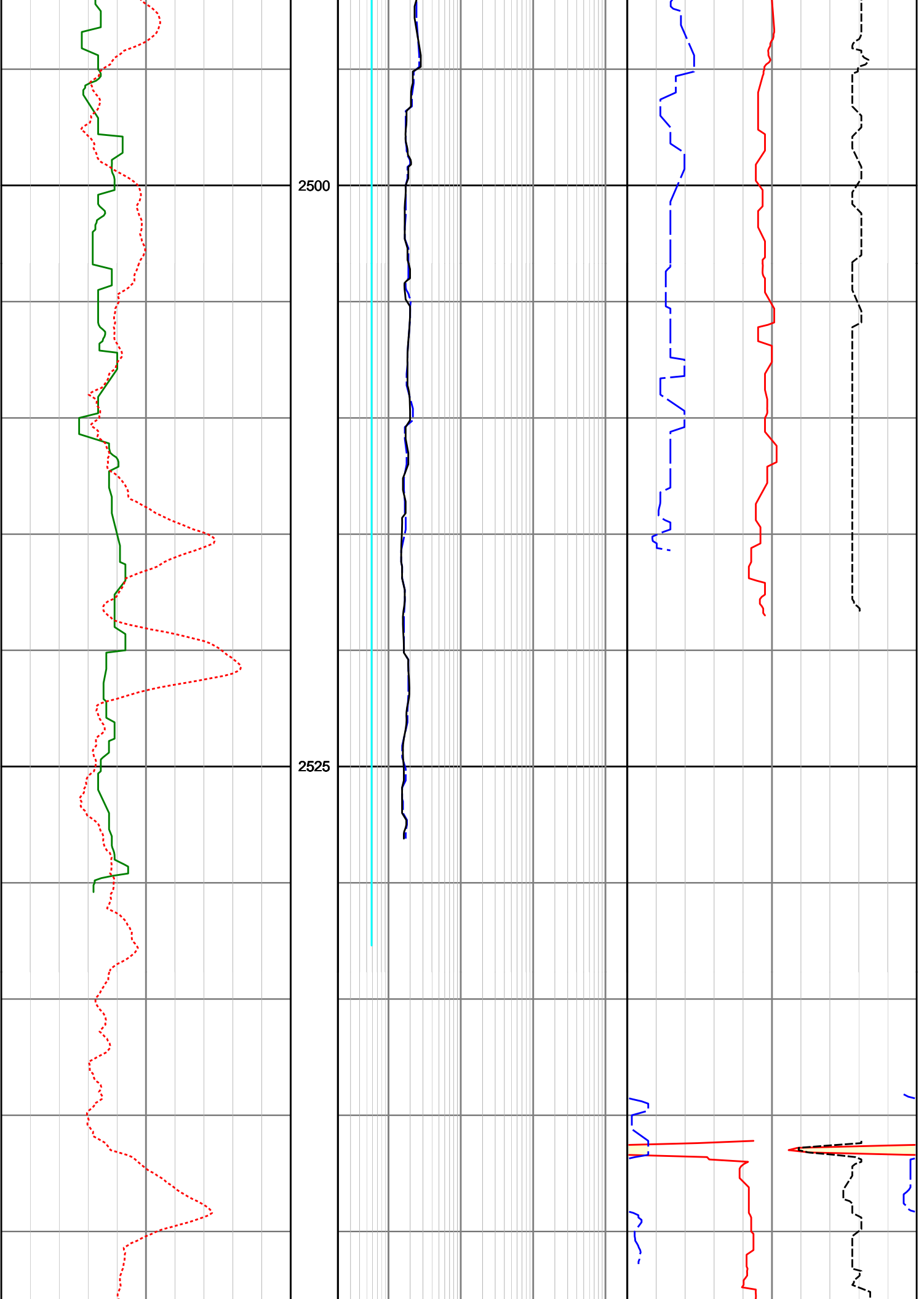


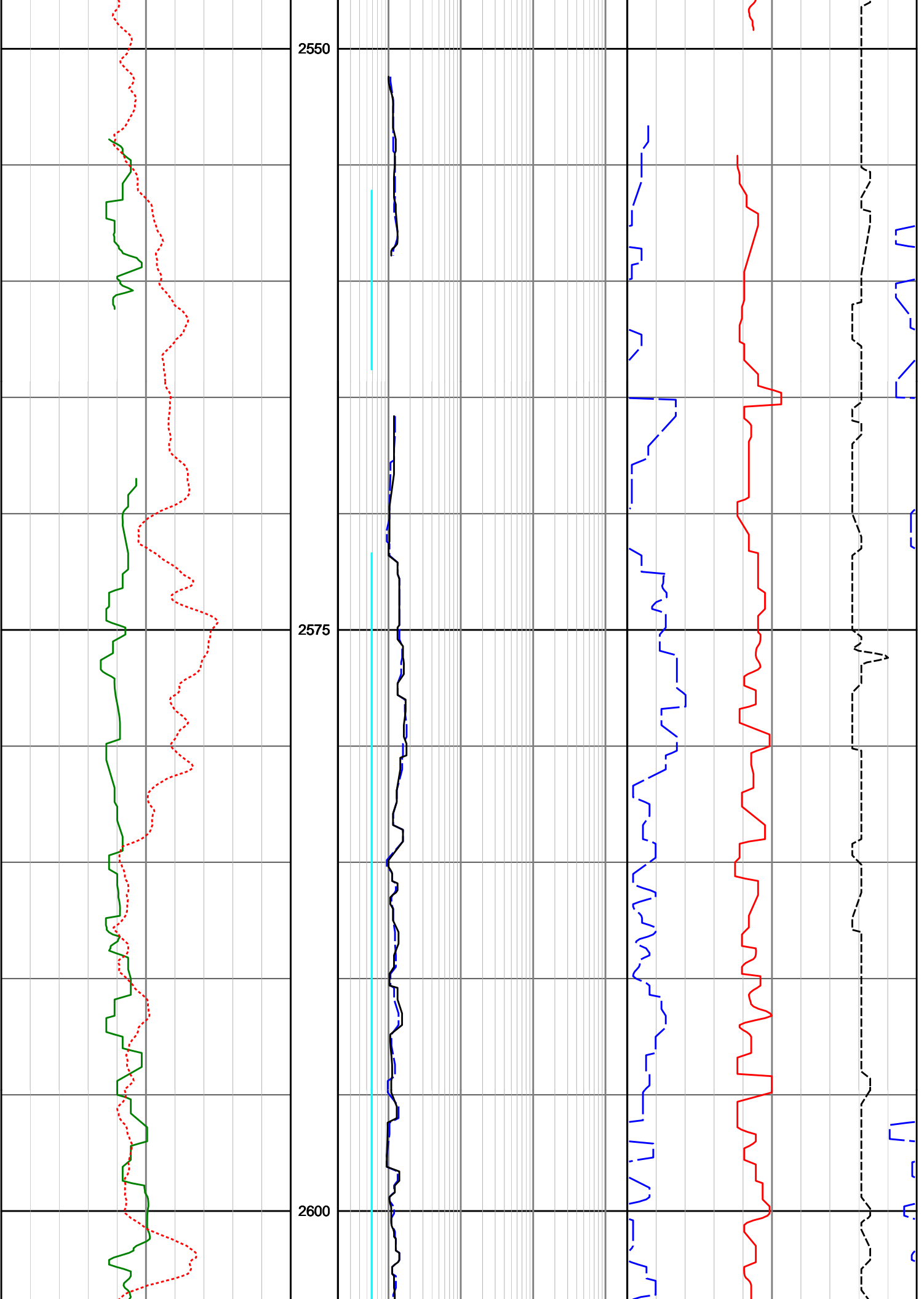


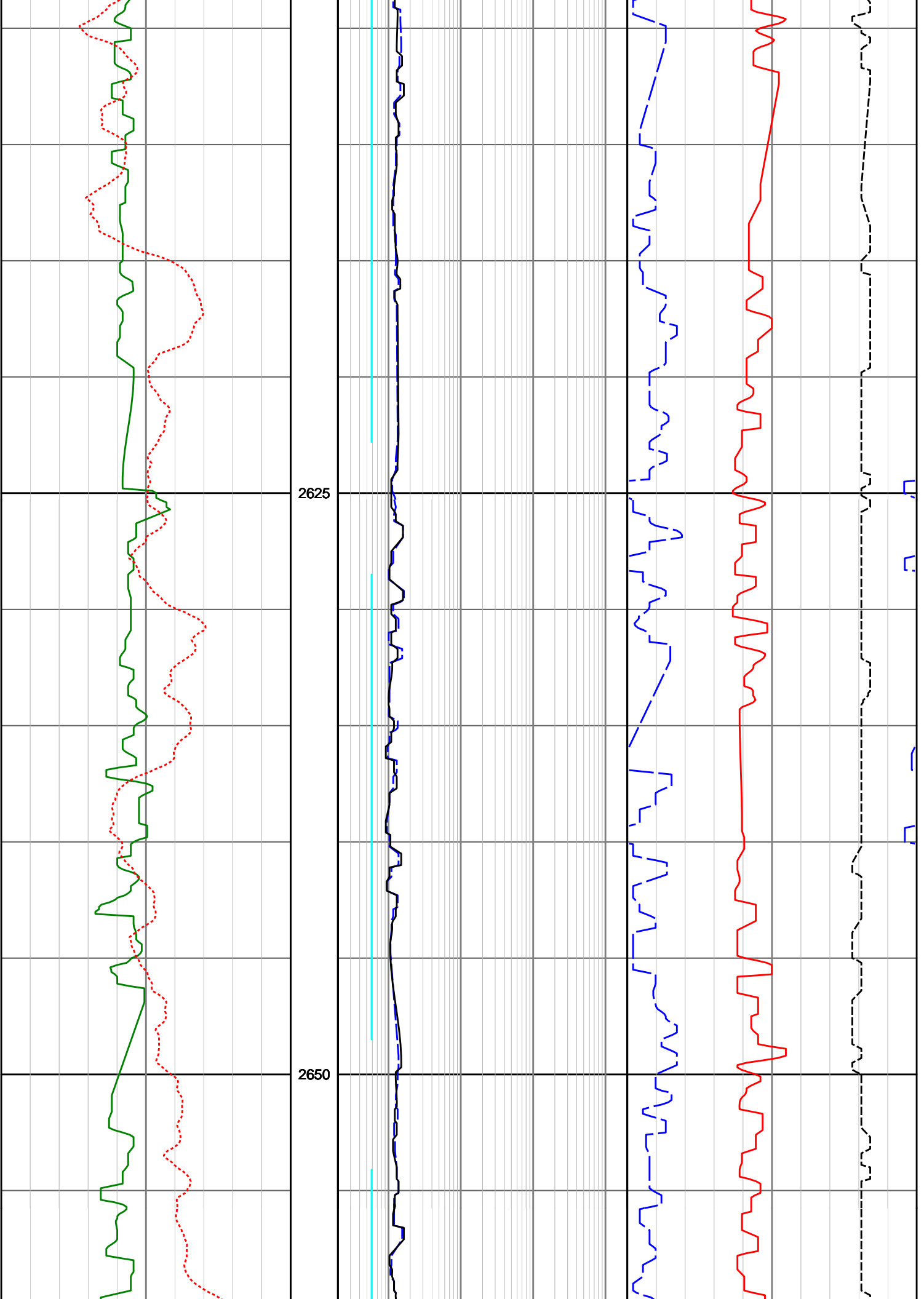


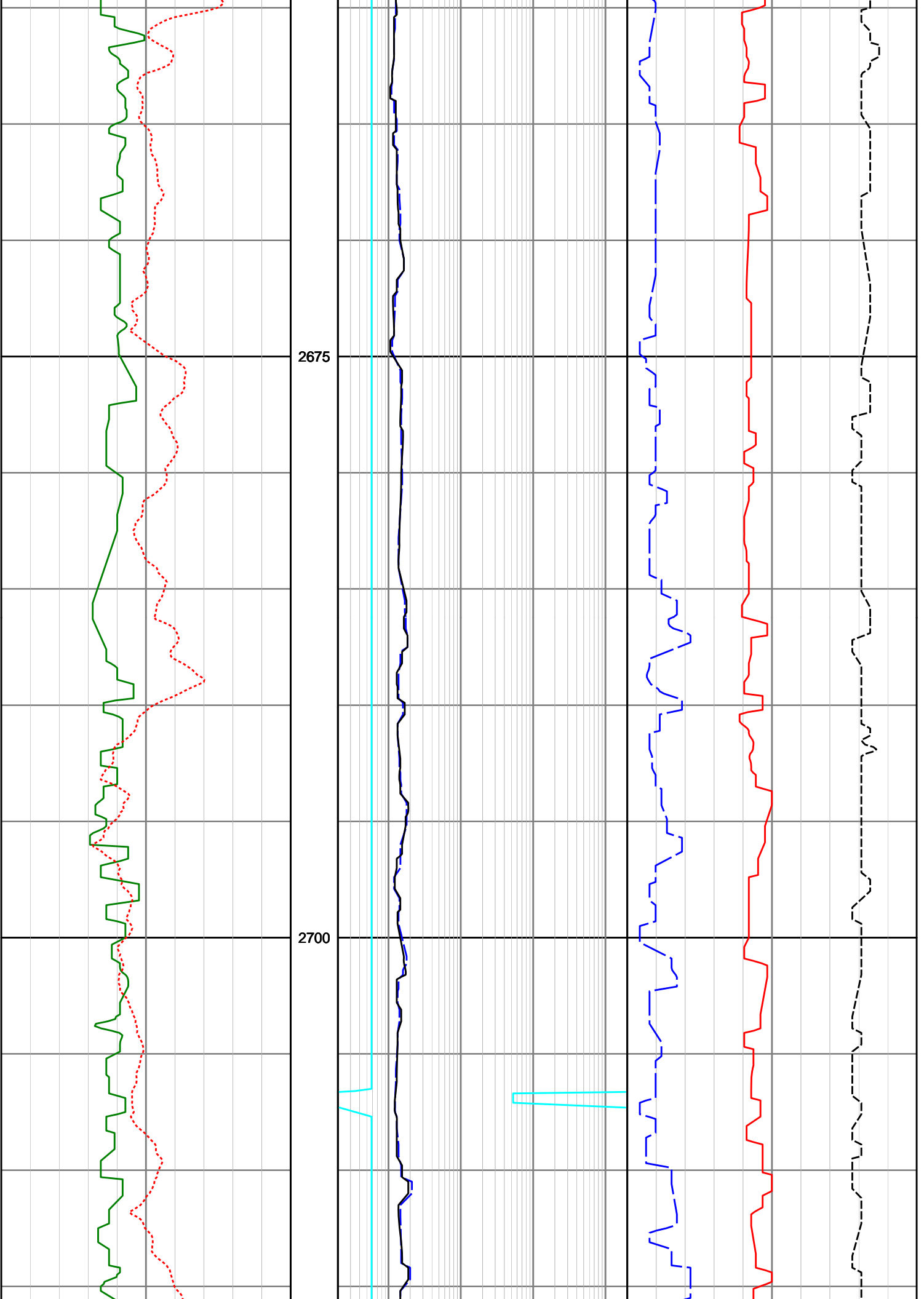


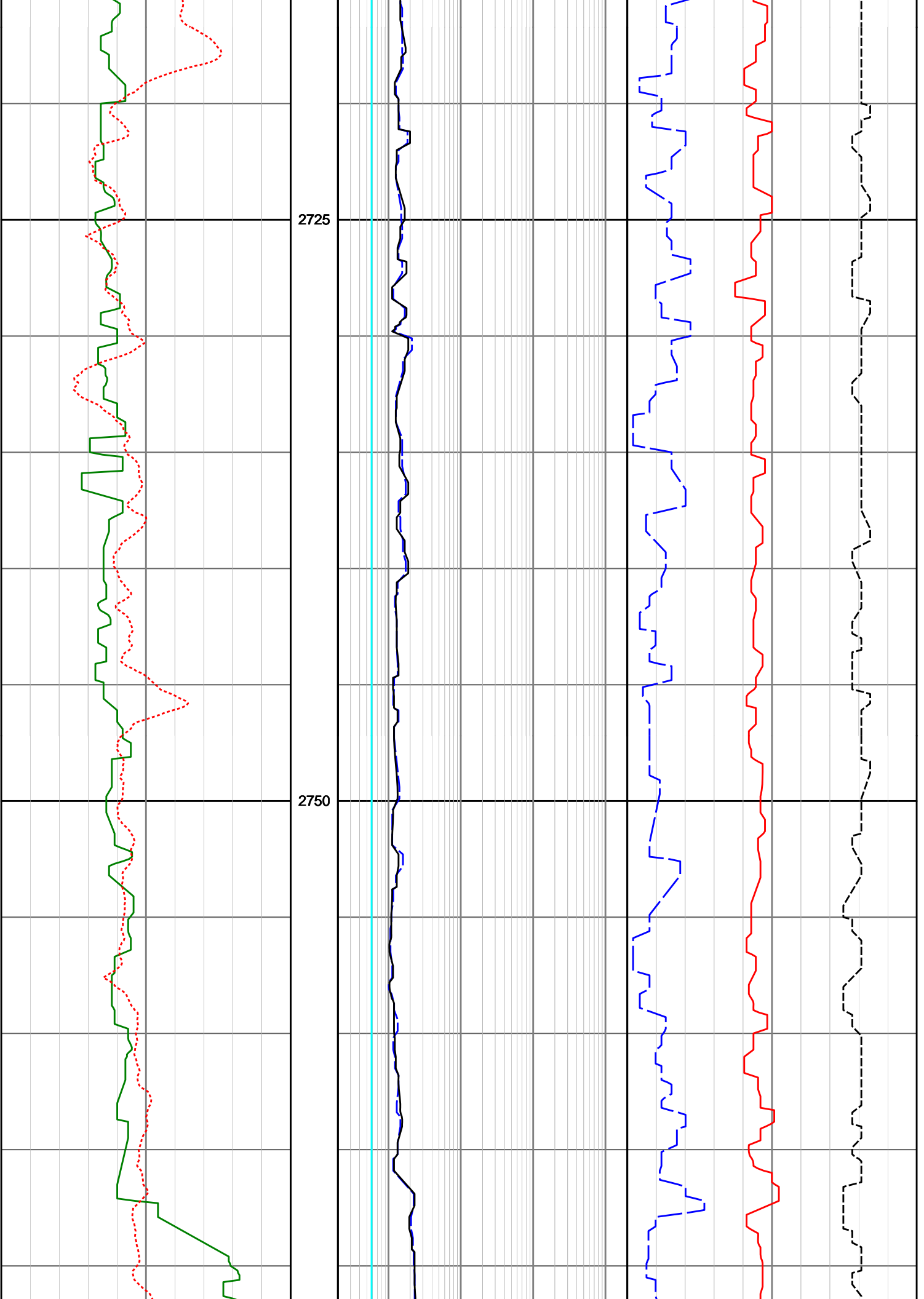


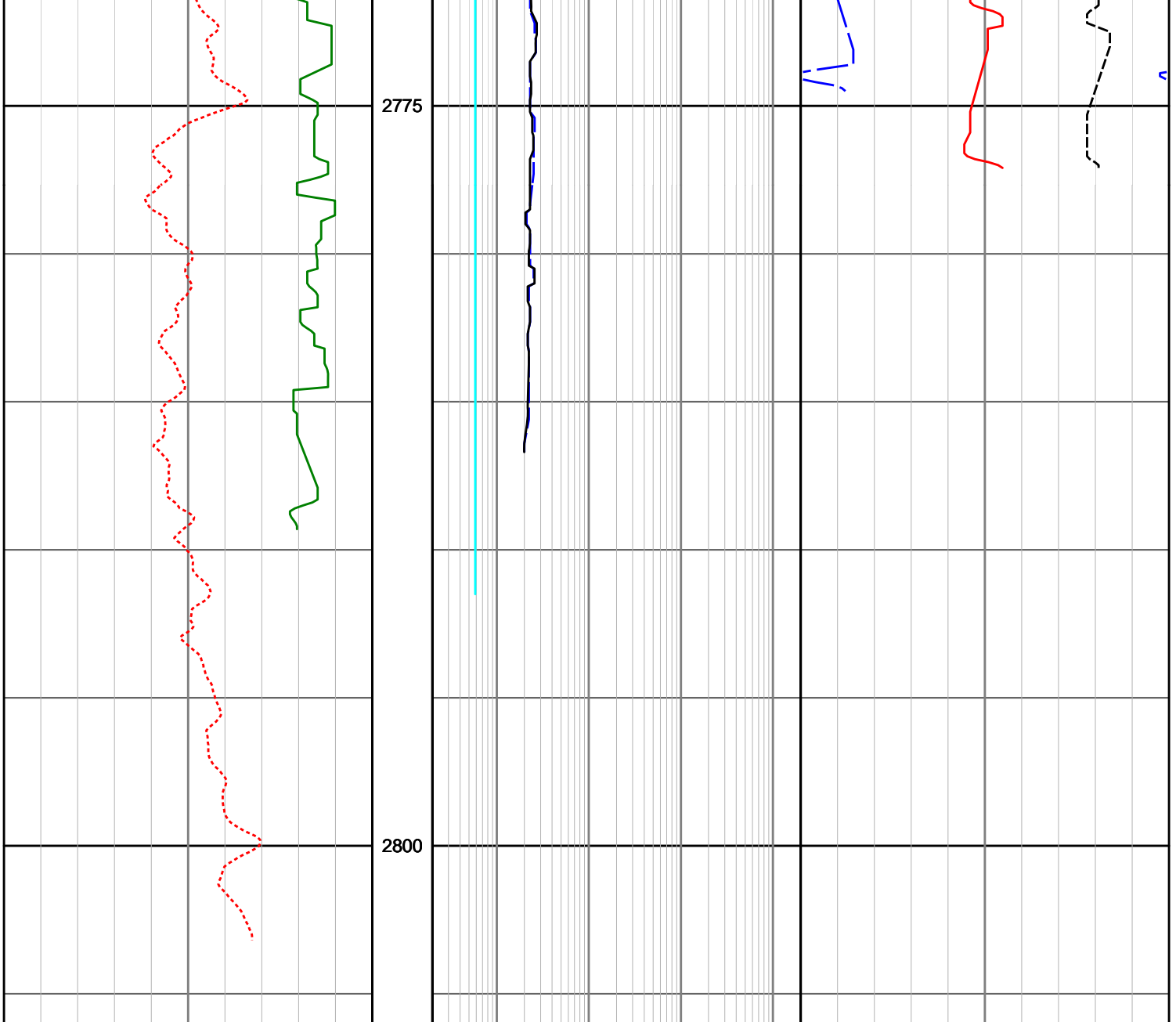












<p>Gamma Ray (SGRC) API</p> <p>0 200</p>	<p>DEPTH MD 1:200</p>	<p>Shallow Phase Res (SESP) ohmm</p> <p>0.2 2K</p>	<p>Neutron Porosity (NUCL) v/v</p> <p>0.45 -0.15</p>
<p>Rate of Penetration (SROP) m/hr</p> <p>200 0</p>		<p>Deep Phase Res (SEDP) ohmm</p> <p>0.2 2K</p>	<p>Bulk Density (SBD2) g/cc</p> <p>1.95 2.95</p>
		<p>AFR Medium Res LF (SMLT) ohmm</p> <p>0.2 2K</p>	<p>Standoff Correction (SCO2) g/cc</p> <p>-0.75 0.25</p>