

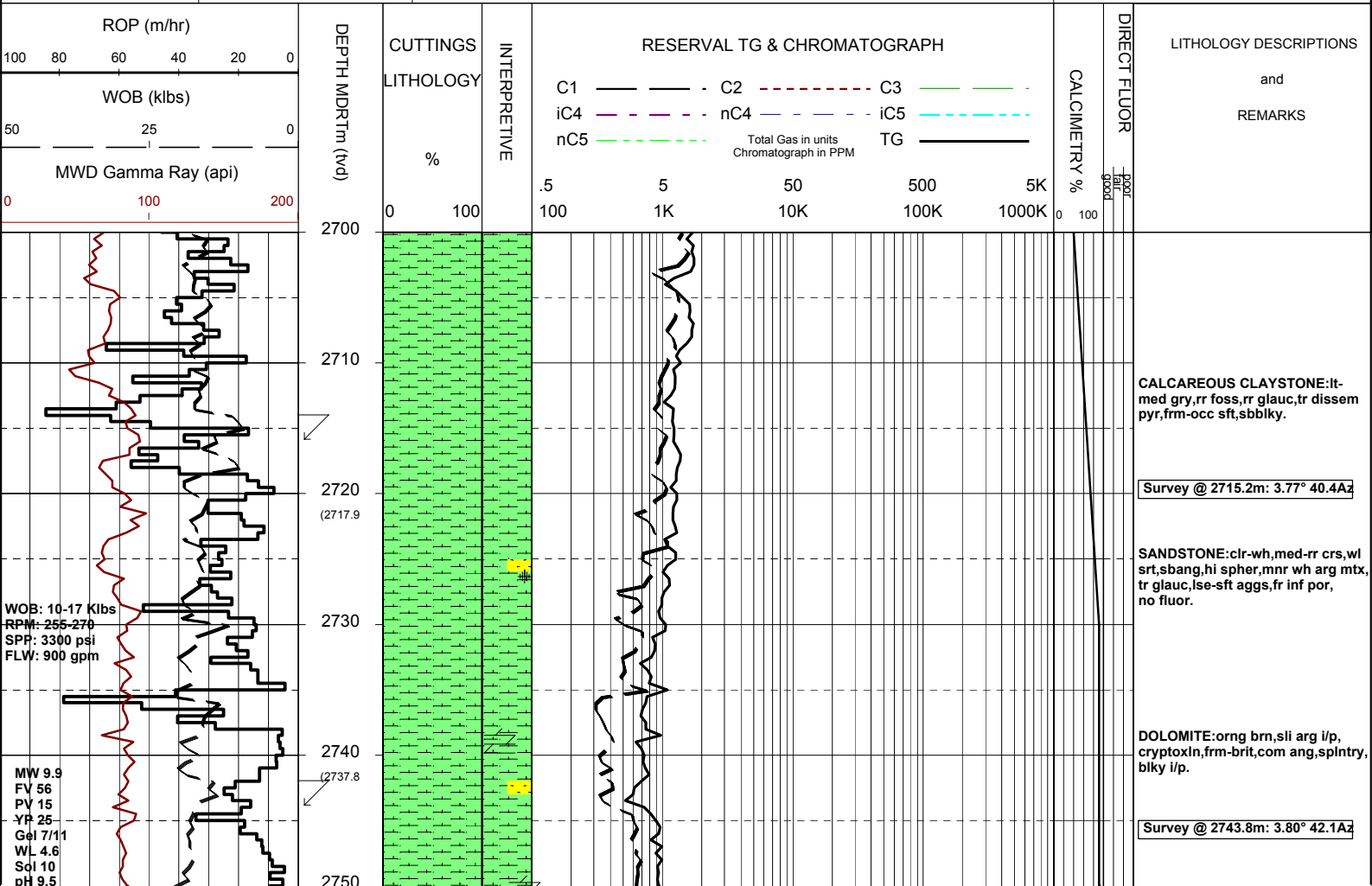


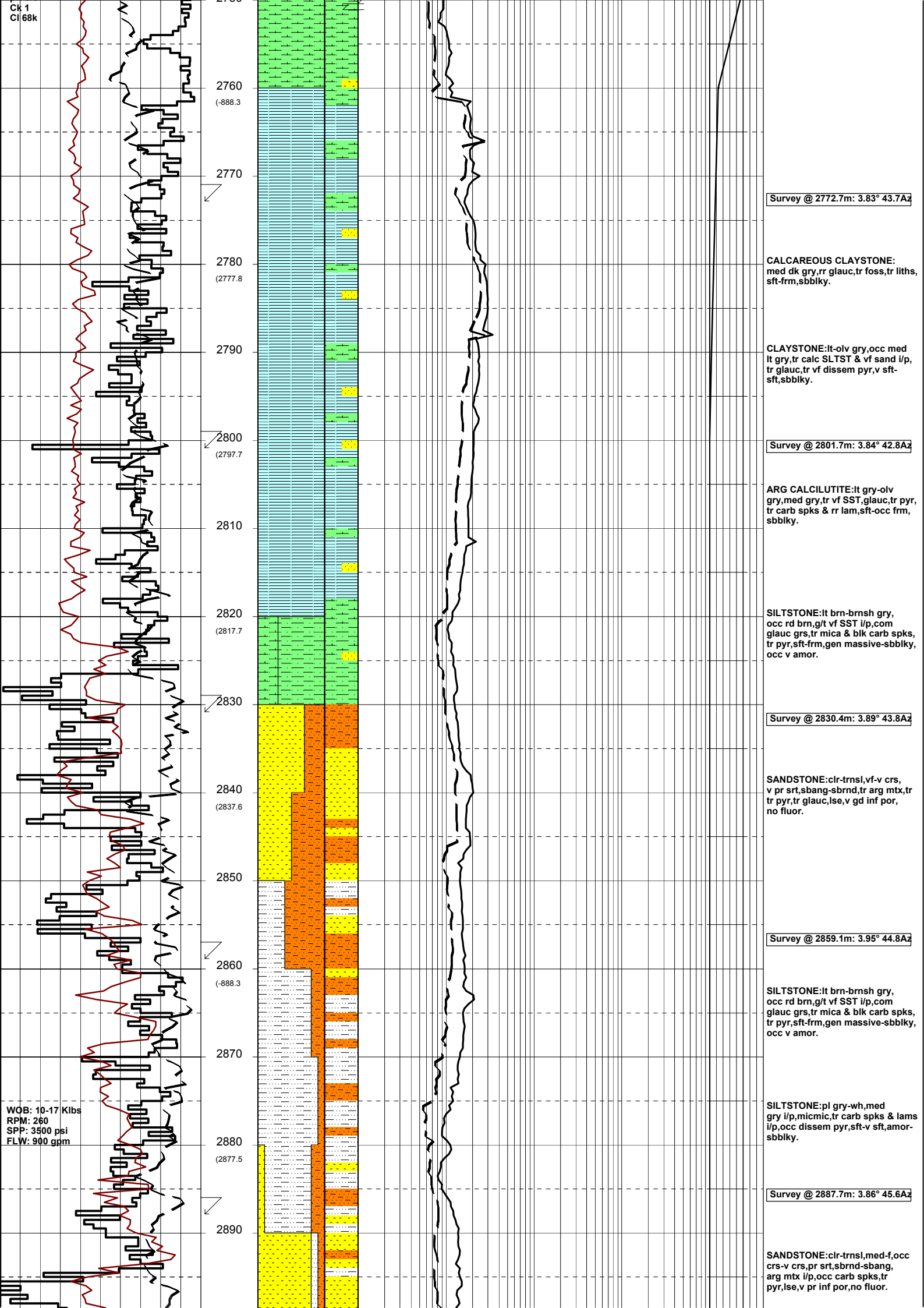
MASTERLOG CULVERIN-1

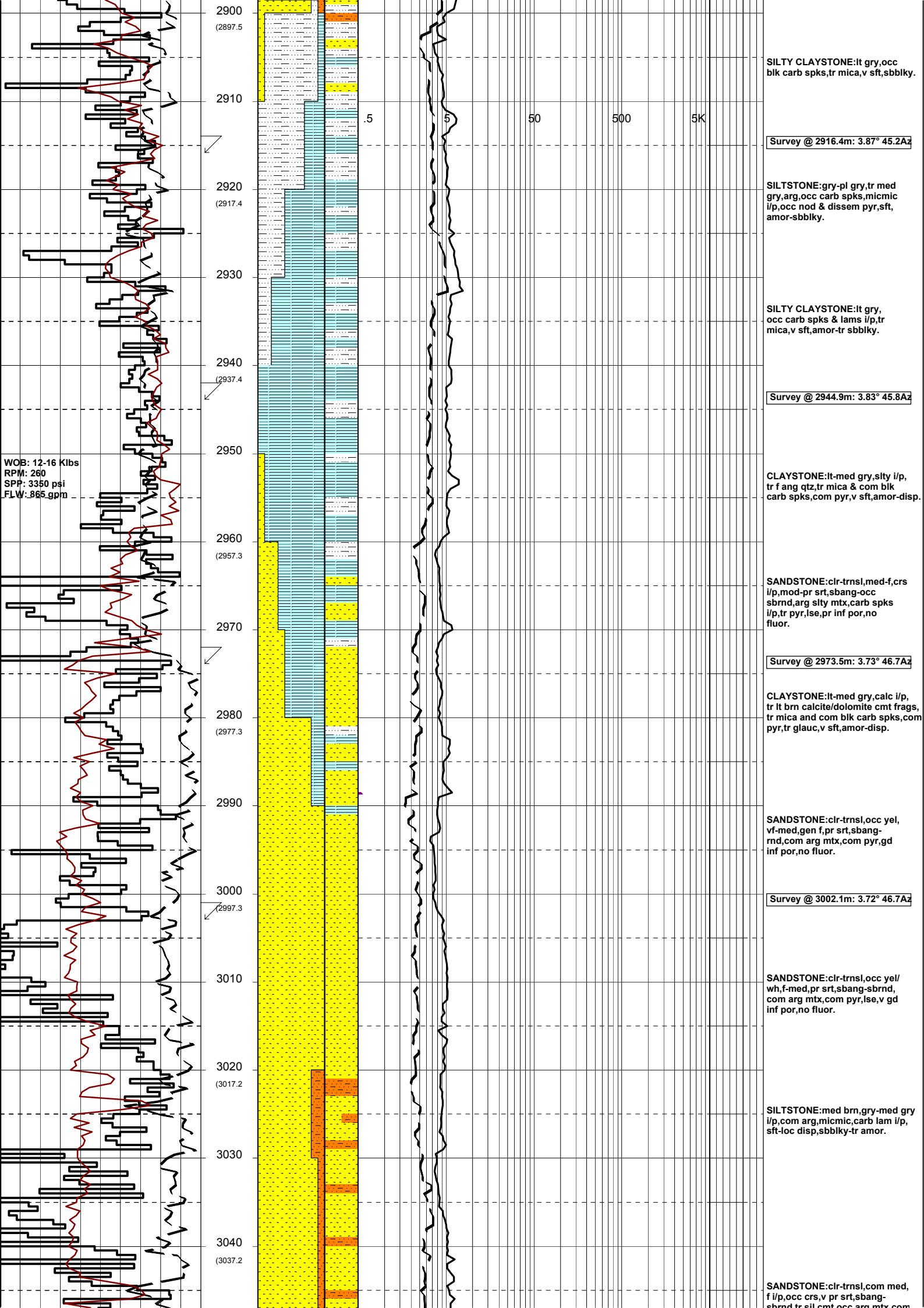


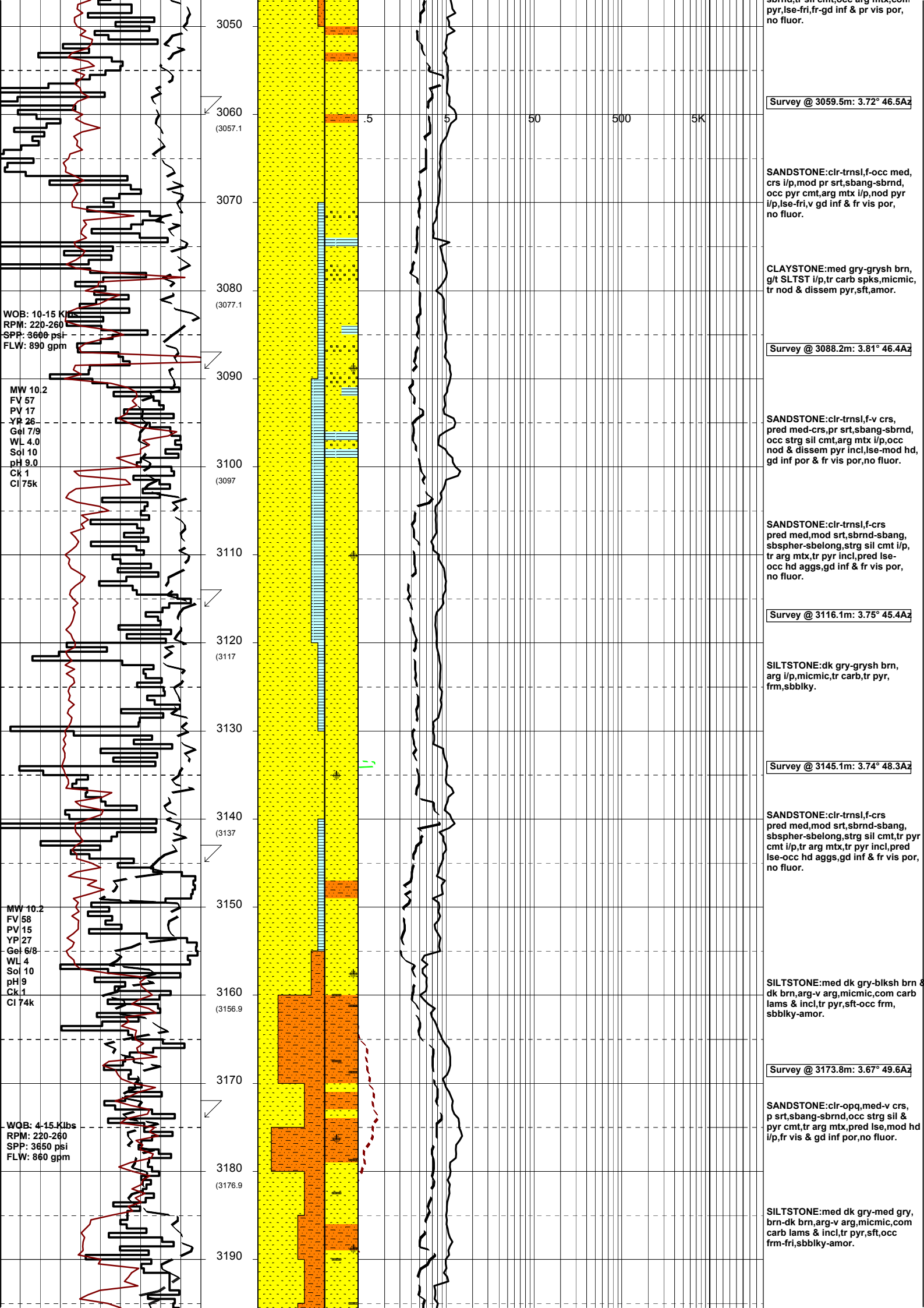
GENERAL	POSITION	HOLE / CASING INFO	DATE / DEPTH	ENGINEERS
Country : AUSTRALIA	Latitude : 38°24'08.14"S	914mm (36") hole to mMDRT: 650.0m	Spud Date : 16-12-05	D.ADDERLEY
Permit : VIC/P-56	Longitude : 148°39'14.92"E	445mm (17 1/2") hole to mMDRT: 1525m	Total Depth Date : xx-xx-05	T.PLATT
Field : GIPPSLAND	UTM Co-ord X (m E):644 440	311mm (12 1/4") hole to mMDRT: m	Total Depth (mMDRT): m	A.DUNN
Basin : GIPPSLAND	UTM Co-ord Y (m N):5 748 250	762mm (30") Cond. to mMDRT: 650m	True Vertical Depth (mTVDSS): m	S.PROSSER
Well Type : EXPLORATION	RT to MSL (m): 22	340mm (13 3/8") Csg to mMDRT: 1511m	Log Scale : 1/ 500	
Rig Name : OCEAN PATRIOT	RT to Sea Bed (m): 607		Final Status :	

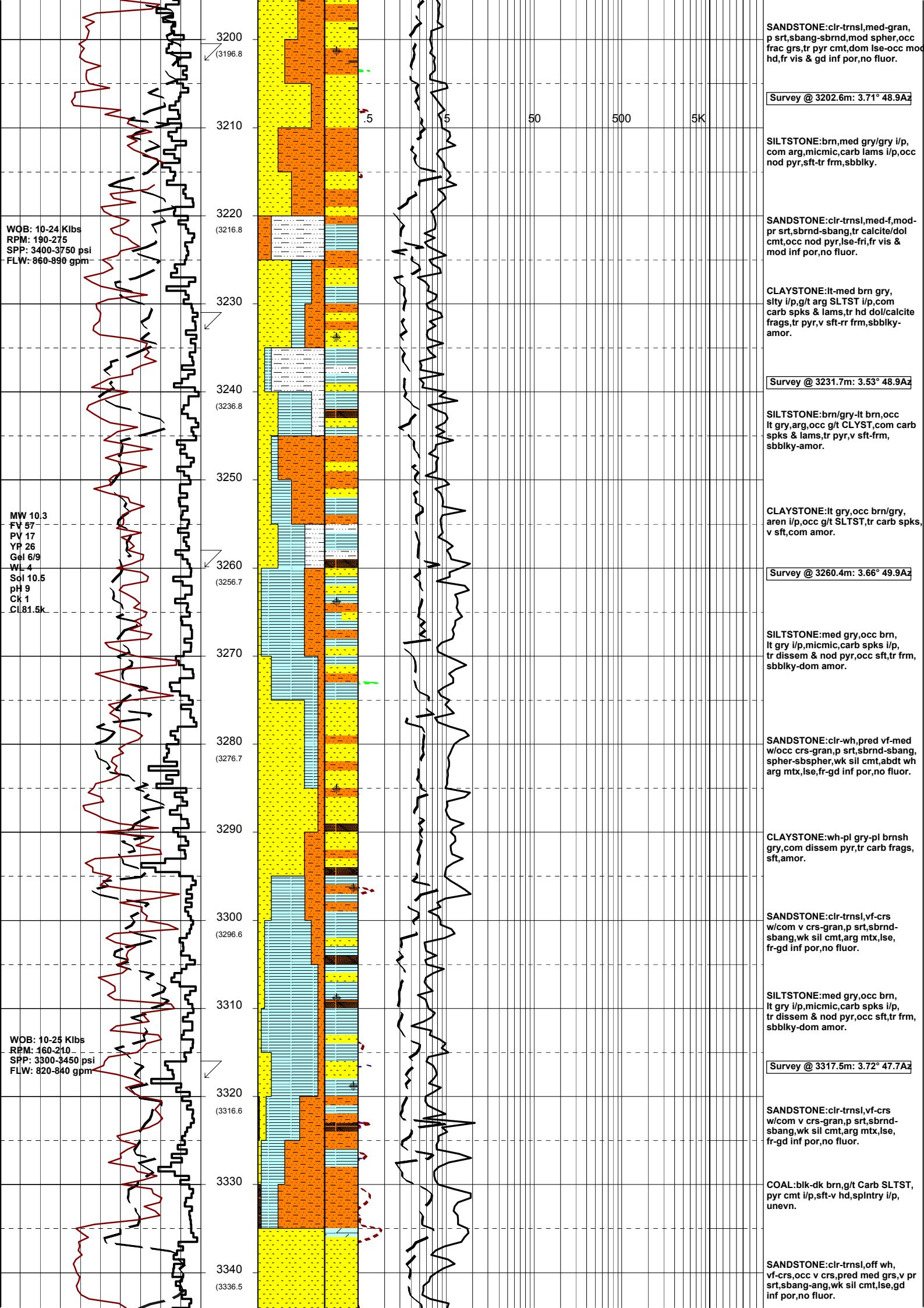
ABBREVIATIONS		LITHOLOGY LEGEND				ENGINEERING LEGEND	
MW Mud Weight	WOB Weight on Bit (klbs)	Claystone	Marl	Lithic Fragment	Cement	Shoe	
FV Funnel Viscosity	RPM Rotations Per Min	Siltstone	Clay, Limestone	Foraminifera	Glauconite	Deviation survey ← RFT	
PV Plastic Viscosity	FLW Flow Rate (gpm)	Shale	Limestone	Fossils	Pyrite	DST ← FIT	
YP Yield Point	SPP Pump Pressure (psi)	Fine SST	Dolomite	Bryozoa	Iron Minerals	Test ← Mud loss	
Gel Gel Strength	RR Re-Run Bit	Medium SST	Coal	Sponges	Mica	Sidewall Core	
WL Water Loss	TG Trip Gas	Coarse SST	Arg. Siltstone	Brachiopoda	Carb Fragments	Core	
KCI Potassium Chloride	CG Connection Gas						
Cl Chlorides	BG Background Gas						
Incl Inclination	DGP Drilled Gas Peak						
Az Azimuth	MM Mud Motor						











SANDSTONE:clr-trnsl,med-gran,
p srt,sbang-sbrnd,mod spher,occ
frac grs,tr pyr cmt,dom lse-occ mod
hd,fr vis & gd inf por,no fluor.

Survey @ 3202.6m: 3.71° 48.9Az

SILTSTONE:brn,med gry/gry i/p,
com arg,micmic,carb lams i/p,occ
nod pyr,sft-tr frm,sbbkly.

SANDSTONE:clr-trnsl,med-f,mod-
pr srt,sbrnd-sbang,tr calcite/dol
cmt,occ nod pyr,lse-fri,fr vis &
mod inf por,no fluor.

CLAYSTONE:lt-med brn gry,
sity i/p,g/t arg SLTST i/p,com
carb spks & lams,tr hd dol/calcite
frags,tr pyr,v sft-frm,sbbkly-
amor.

Survey @ 3231.7m: 3.53° 48.9Az

SILTSTONE:brn/gry-lt brn,occ
lt gry,arg,occ g/t CLYST,com carb
spks & lams,tr pyr,v sft-frm,
sbbkly-amor.

CLAYSTONE:lt gry,occ brn/gry,
aren i/p,occ g/t SLTST,tr carb spks,
v sft,com amor.

Survey @ 3260.4m: 3.66° 49.9Az

SILTSTONE:med gry,occ brn,
lt gry i/p,micmic,carb spks i/p,
tr disse & nod pyr,occ sft,tr frm,
sbbkly-dom amor.

SANDSTONE:clr-wh,pred vf-med
w/occ crs-gran,p srt,sbrnd-sbang,
spher-sbspher,wk sil cmt,abdnt wh
arg mtx,lse,fr-gd inf por,no fluor.

CLAYSTONE:wh-pl gry-pl brnsh
gry,com disse pyr,tr carb frags,
sft,amor.

SANDSTONE:clr-trnsl,vf-crs
w/com v crs-gran,p srt,sbrnd-
sbang,wk sil cmt,arg mtx,lse,
fr-gd inf por,no fluor.

SILTSTONE:med gry,occ brn,
lt gry i/p,micmic,carb spks i/p,
tr disse & nod pyr,occ sft,tr frm,
sbbkly-dom amor.

Survey @ 3317.5m: 3.72° 47.7Az

SANDSTONE:clr-trnsl,vf-crs
w/com v crs-gran,p srt,sbrnd-
sbang,wk sil cmt,arg mtx,lse,
fr-gd inf por,no fluor.

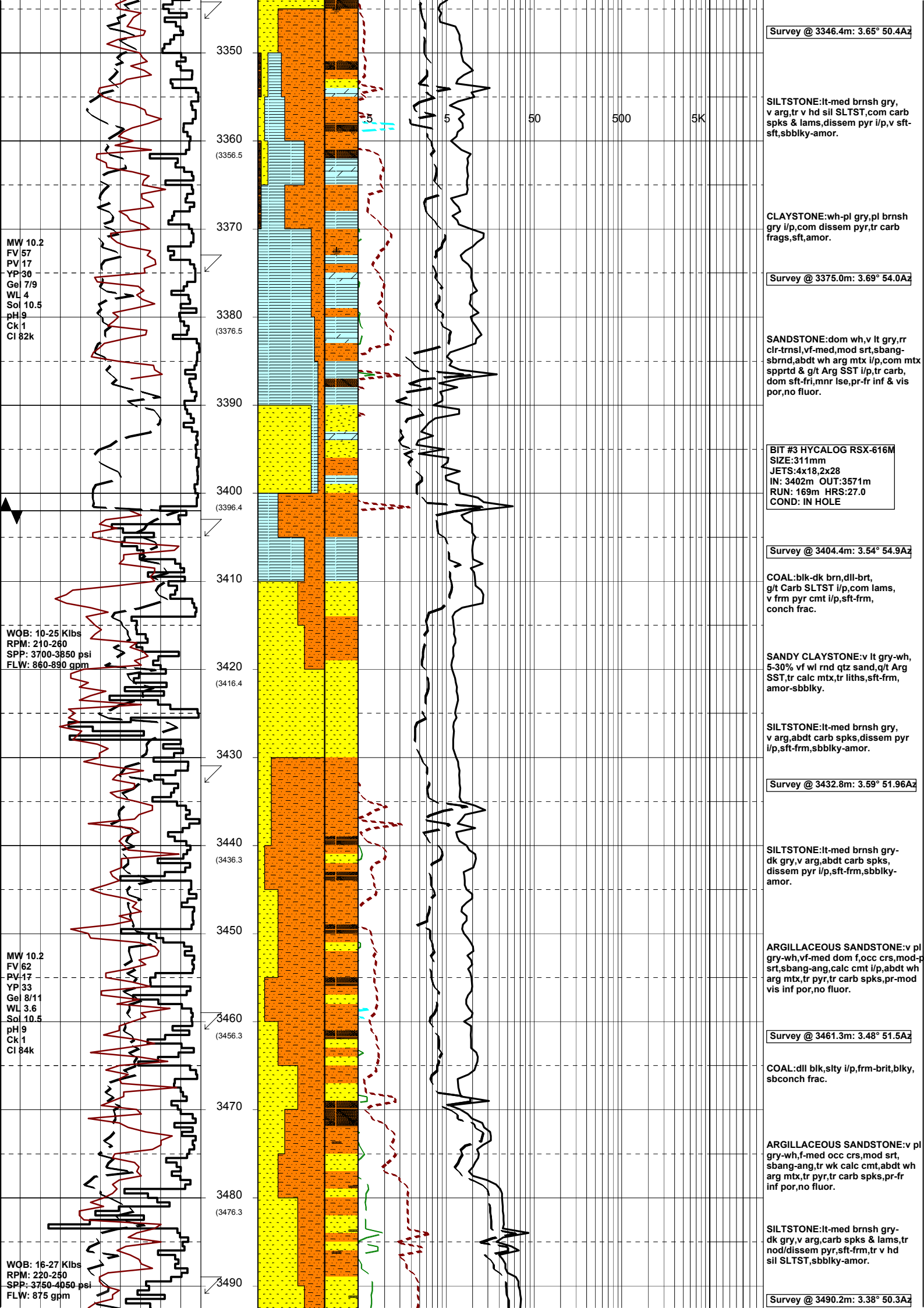
COAL:blk-dk brn,g/t Carb SLTST,
pyr cmt i/p,sft-v hd,splntry i/p,
unevn.

SANDSTONE:clr-trnsl,off wh,
vf-crs,occ v crs,pred med grs,v pr
srt,sbang-ang,wk sil cmt,lse,gd
inf por,no fluor.

WOB: 10-24 Klbs
RPM: 190-275
SPP: 3400-3750 psi
FLW: 860-890 gpm

MW 10.3
FV 57
PV 17
YP 26
Gel 6/9
WL 4
Sol 10.5
pH 9
Ck 1
Cl 81.5k

WOB: 10-25 Klbs
RPM: 160-210
SPP: 3300-3450 psi
FLW: 820-840 gpm



Survey @ 3346.4m: 3.65° 50.4Az

SILTSTONE:lt-med brnsh gry, v arg,tr v hd sil SLTST,com carb spks & lams,disse pyr i/p,v sft-sft,sbbiky-amor.

CLAYSTONE:wh-pl gry,pl brnsh gry i/p,com disse pyr,tr carb frags,sft,amor.

Survey @ 3375.0m: 3.69° 54.0Az

SANDSTONE:dom wh,v lt gry,rr clr-trnsl,vf-med,mod srt,sbang-sbrnd,abdt wh arg mtx i/p,com mxt spprt & g/t Arg SST i/p,tr carb, dom sft-fr,mnr lse,pr-fr inf & vis por,no fluor.

BIT #3 HYCALOG RSX-616M
 SIZE:311mm
 JETS:4x18,2x28
 IN: 3402m OUT:3571m
 RUN: 169m HRS:27.0
 COND: IN HOLE

Survey @ 3404.4m: 3.54° 54.9Az

COAL:blk-dk brn,dll-brt, g/t Carb SLTST i/p,com lams, v frm pyr cmt i/p,sft-frm, conch frac.

SANDY CLAYSTONE:v lt gry-wh, 5-30% vf wl rnd qtz sand,q/t Arg SST,tr calc mtx,tr liths,sft-frm, amor-sbbiky.

SILTSTONE:lt-med brnsh gry, v arg,abdt carb spks,disse pyr i/p,sft-frm,sbbiky-amor.

Survey @ 3432.8m: 3.59° 51.96Az

SILTSTONE:lt-med brnsh gry-dk gry,v arg,abdt carb spks, disse pyr i/p,sft-frm,sbbiky-amor.

ARGILLACEOUS SANDSTONE:v pl gry-wh,vf-med dom f,occ crs,mod-srt,sbang-ang,calc cmt i/p,abdt wh arg mtx,tr pyr,tr carb spks,pr-mod vis inf por,no fluor.

Survey @ 3461.3m: 3.48° 51.5Az

COAL:dll blk,slty i/p,frm-brit,blky, sbconch frac.

ARGILLACEOUS SANDSTONE:v pl gry-wh,f-med occ crs,mod srt, sbang-ang,tr wk calc cmt,abdt wh arg mtx,tr pyr,tr carb spks,pr-fr inf por,no fluor.

SILTSTONE:lt-med brnsh gry-dk gry,v arg,carb spks & lams,tr nod/disse pyr,sft-frm,tr v hd sil SLTST,sbbiky-amor.

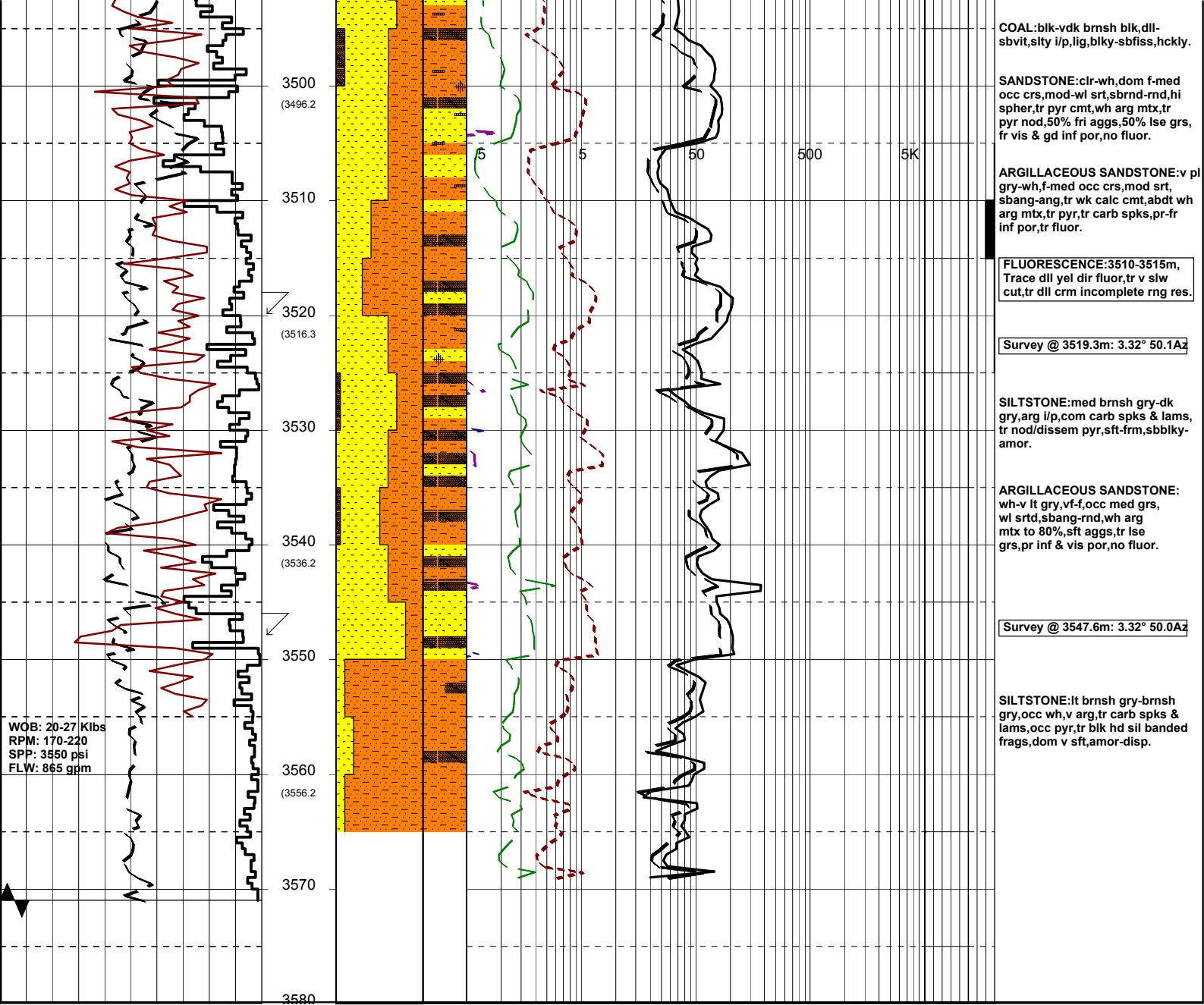
Survey @ 3490.2m: 3.38° 50.3Az

MW 10.2
 FV 57
 PV 17
 YP 30
 Gel 7/9
 WL 4
 Sol 10.5
 pH 9
 Ck 1
 CI 82k

WOB: 10-25 Klbs
 RPM: 210-260
 SPP: 3700-3850 psi
 FLW: 860-890 gpm

MW 10.2
 FV 62
 PV 17
 YP 33
 Gel 8/11
 WL 3.6
 Sol 10.5
 pH 9
 Ck 1
 CI 84k

WOB: 16-27 Klbs
 RPM: 220-250
 SPP: 3750-4050 psi
 FLW: 875 gpm



COAL: blk-vdk brnsh blk, dll-sbvit, slty i/p, lig, blk-ysb, hckly.

SANDSTONE: clr-wh, dom f-med occ crs, mod-wl srt, sbnd-rnd, hi spher, tr pyr cmt, wh arg mtx, tr pyr nod, 50% fri aggs, 50% lse grs, fr vis & gd inf por, no fluor.

ARGILLACEOUS SANDSTONE: v pl gry-wh, f-med occ crs, mod srt, sbang-ang, tr wk calc cmt, abdt wh arg mtx, tr pyr, tr carb spks, pr-fr inf por, tr fluor.

FLUORESCENCE: 3510-3515m. Trace dll yel dir fluor, tr v slw cut, tr dll crm incomplete rng res.

Survey @ 3519.3m: 3.32° 50.1Az

SILTSTONE: med brnsh gry-dk gry, arg i/p, com carb spks & lams, tr nod/dissemin pyr, sft frm, sbbkly-amor.

ARGILLACEOUS SANDSTONE: wh-v lt gry, vf-f, occ med grs, wl srt, sbang-rnd, wh arg mtx to 80%, sft aggs, tr lse grs, pr inf & vis por, no fluor.

Survey @ 3547.6m: 3.32° 50.0Az

SILTSTONE: lt brnsh gry-brnsh gry, occ wh, v arg, tr carb spks & lams, occ pyr, tr blk hd sil banded frags, dom v sft, amor-disp.

