

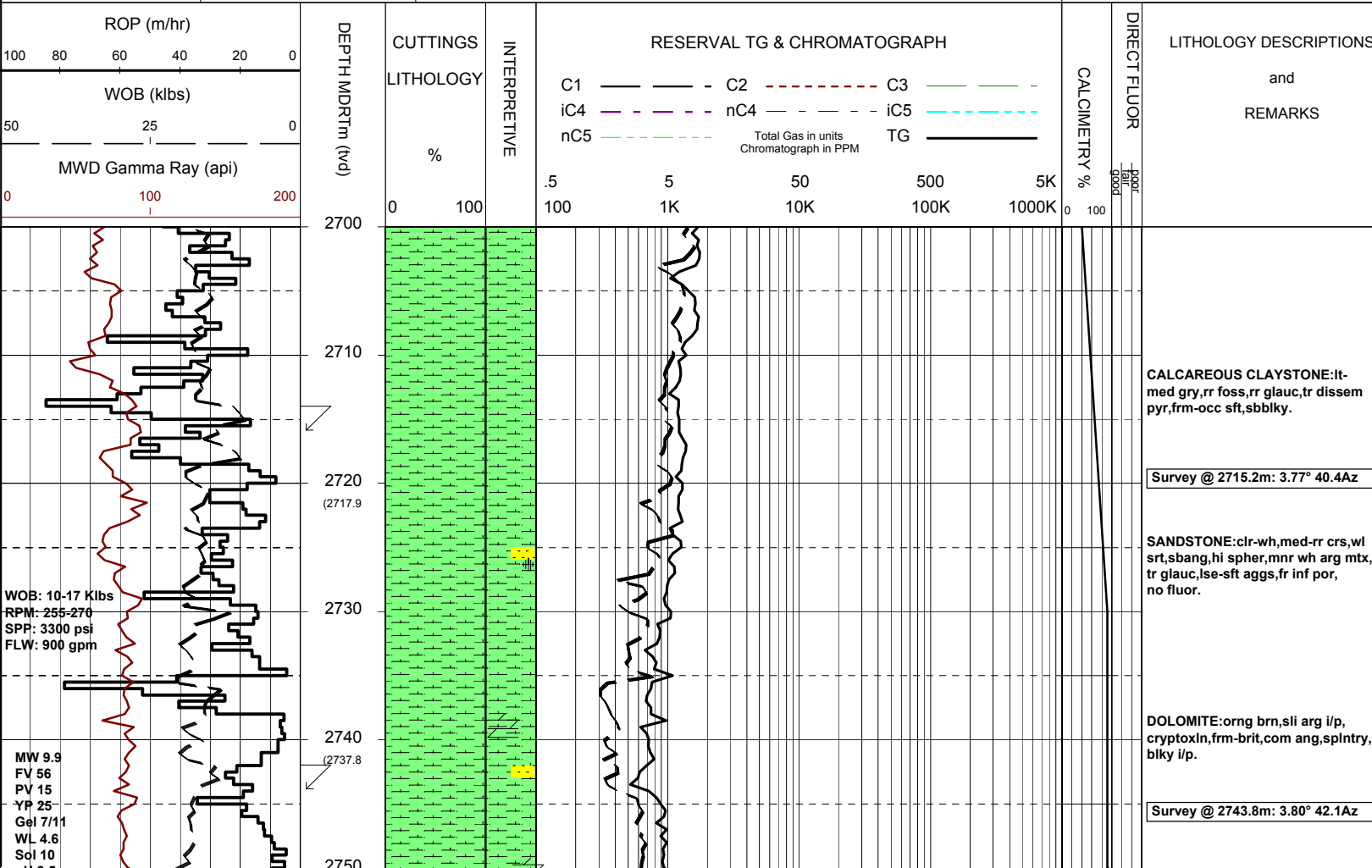


MASTERLOG CULVERIN-1



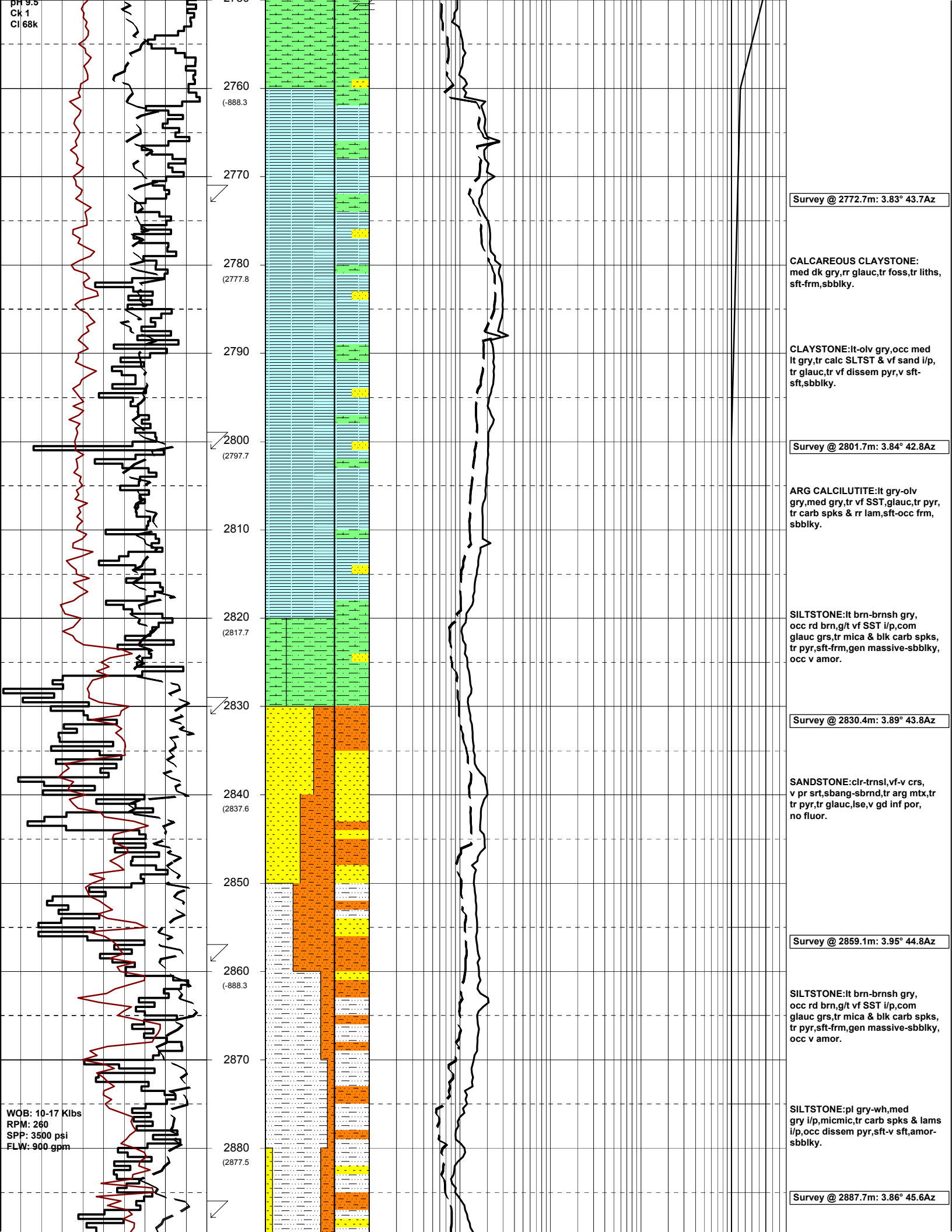
GENERAL	POSITION	HOLE / CASING INFO	DATE / DEPTH	ENGINEERS
Country : AUSTRALIA	Latitude : 38°24'08.14"S	914mm (36") hole to mMDRT: 650.0m	Spud Date : 16-12-05	D.ADDERLEY
Permit : VIC/P-56	Longitude : 148°39'14.92"E	445mm (17 1/2") hole to mMDRT: 1525m	Total Depth Date : xx-xx-05	T.PLATT
Field : GIPPSLAND	UTM Co-ord X (m E):644 440	311mm (12 1/4") hole to mMDRT: m	Total Depth (mMDRT): m	A.DUNN
Basin : GIPPSLAND	UTM Co-ord Y (m N):5 748 250	762mm (30") Cond. to mMDRT: 650m	True Vertical Depth (mTVDSS): m	S.PROSSER
Well Type : EXPLORATION RT to MSL (m): 22		340mm (13 3/8") Csg to mMDRT: 1511m	Log Scale : 1/ 500	
Rig Name : OCEAN PATRIOT to Sea Bed (m): 607			Final Status :	

ABBREVIATIONS		LITHOLOGY LEGEND				ENGINEERING LEGEND	
MW Mud Weight	WOB Weight on Bit (klbs)	Claystone	Marl	Lithic Fragment	Cement	Shoe	
FV Funnel Viscosity	RPM Rotations Per Min	Siltstone	Clay, Limestone	Foraminifera	Glaucconite	Deviation survey	← RFT
PV Plastic Viscosity	FLW Flow Rate (gpm)	Shale	Limestone	Fossils	Pyrite	DST	← FIT
YP Yield Point	SPP Pump Pressure (psi)	Fine SST	Dolomite	Bryozoa	Iron Minerals	Test	↘ Mud loss
Gel Gel Strength	RR Re-Run Bit	Medium SST	Coal	Sponges	Mica	Sidewall Core	↗ Mud gain
WL Water Loss	TG Trip Gas	Coarse SST	Arg. Siltstone	Brachiopoda	Carb Fragments	Core	
KCl Potassium Chloride	CG Connection Gas						
Cl Chlorides	BG Background Gas						
Incl Inclination	DGP Drilled Gas Peak						
Az Azimuth	MM Mud Motor						



WOB: 10-17 Klbs
RPM: 255-270
SPP: 3300 psi
FLW: 900 gpm

MW 9.9
FV 56
PV 15
YP 25
Gel 7/11
WL 4.6
Sol 10



2760 (-888.3)
2770
2780 (2777.8)
2790
2800 (2797.7)
2810
2820 (2817.7)
2830
2840 (2837.6)
2850
2860 (-888.3)
2870
2880 (2877.5)

Survey @ 2772.7m: 3.83° 43.7Az

CALCAREOUS CLAYSTONE:
med dk gry,rr glauc,tr foss,tr liths,
sft-frm,sbbiky.

CLAYSTONE:lt-olv gry,occ med
lt gry,tr calc SLTST & vf sand i/p,
tr glauc,tr vf dissem pyr,v sft-
sft,sbbiky.

Survey @ 2801.7m: 3.84° 42.8Az

ARG CALCILUTITE:lt gry-olv
gry,med gry,tr vf SST,glauc,tr pyr,
tr carb spks & rr lam,sft-occ frm,
sbbiky.

SILTSTONE:lt brn-brnsh gry,
occ rd brn,g/t vf SST i/p,com
glauc grs,tr mica & blk carb spks,
tr pyr,sft-frm,gen massive-sbbiky,
occ v amor.

Survey @ 2830.4m: 3.89° 43.8Az

SANDSTONE:clr-trnsl,vf-v crs,
v pr srt,sbang-sbrnd,tr arg mtx,tr
tr pyr,tr glauc,lse,v gd inf por,
no fluor.

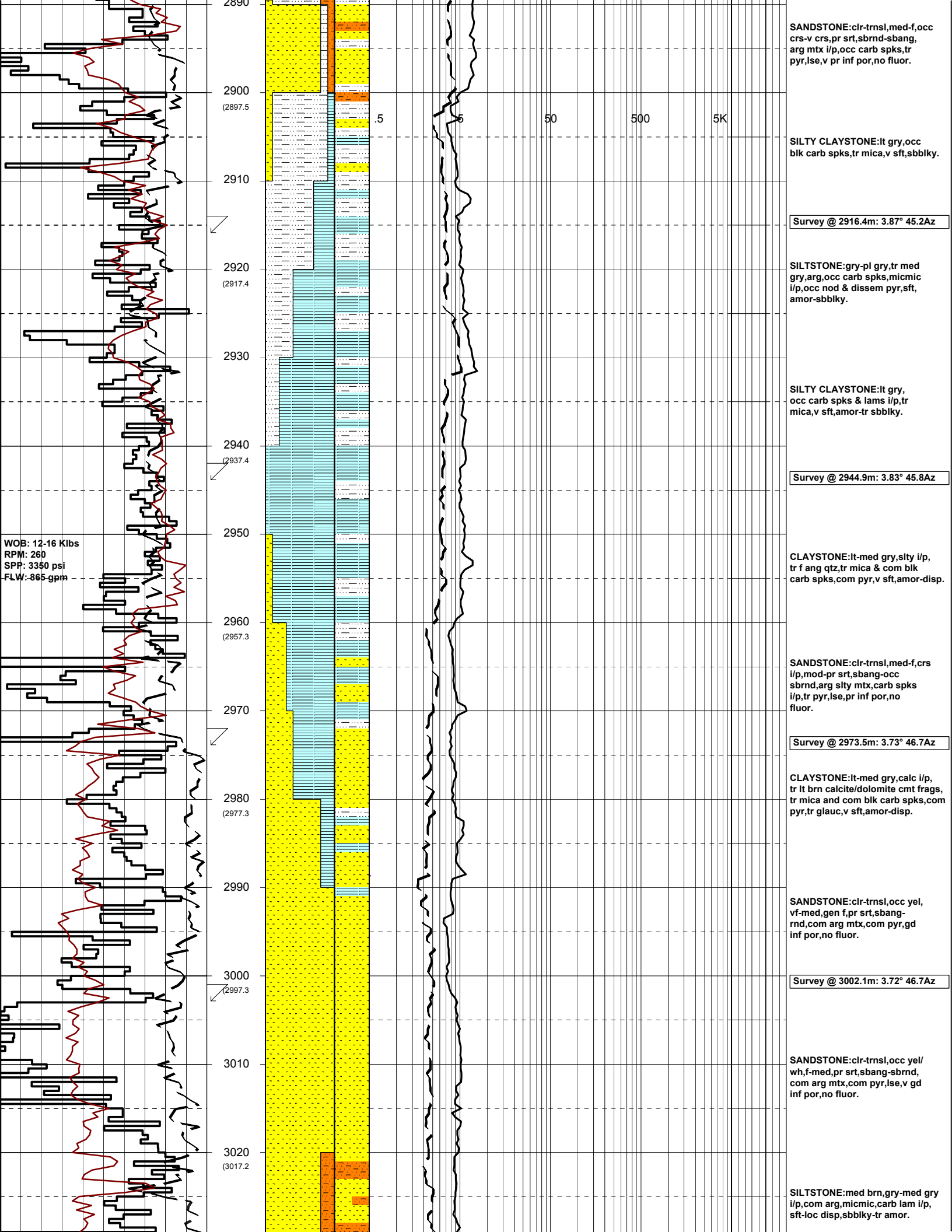
Survey @ 2859.1m: 3.95° 44.8Az

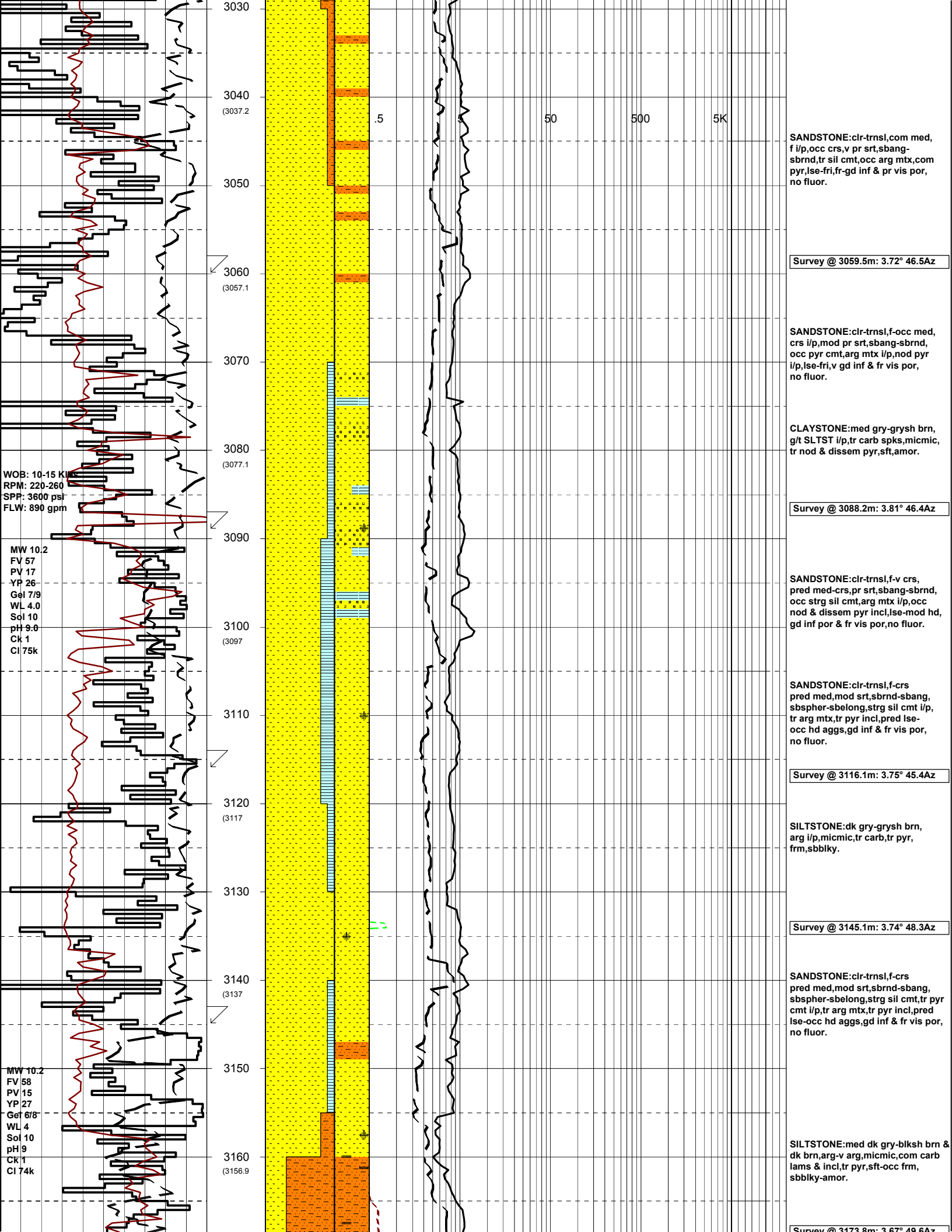
SILTSTONE:lt brn-brnsh gry,
occ rd brn,g/t vf SST i/p,com
glauc grs,tr mica & blk carb spks,
tr pyr,sft-frm,gen massive-sbbiky,
occ v amor.

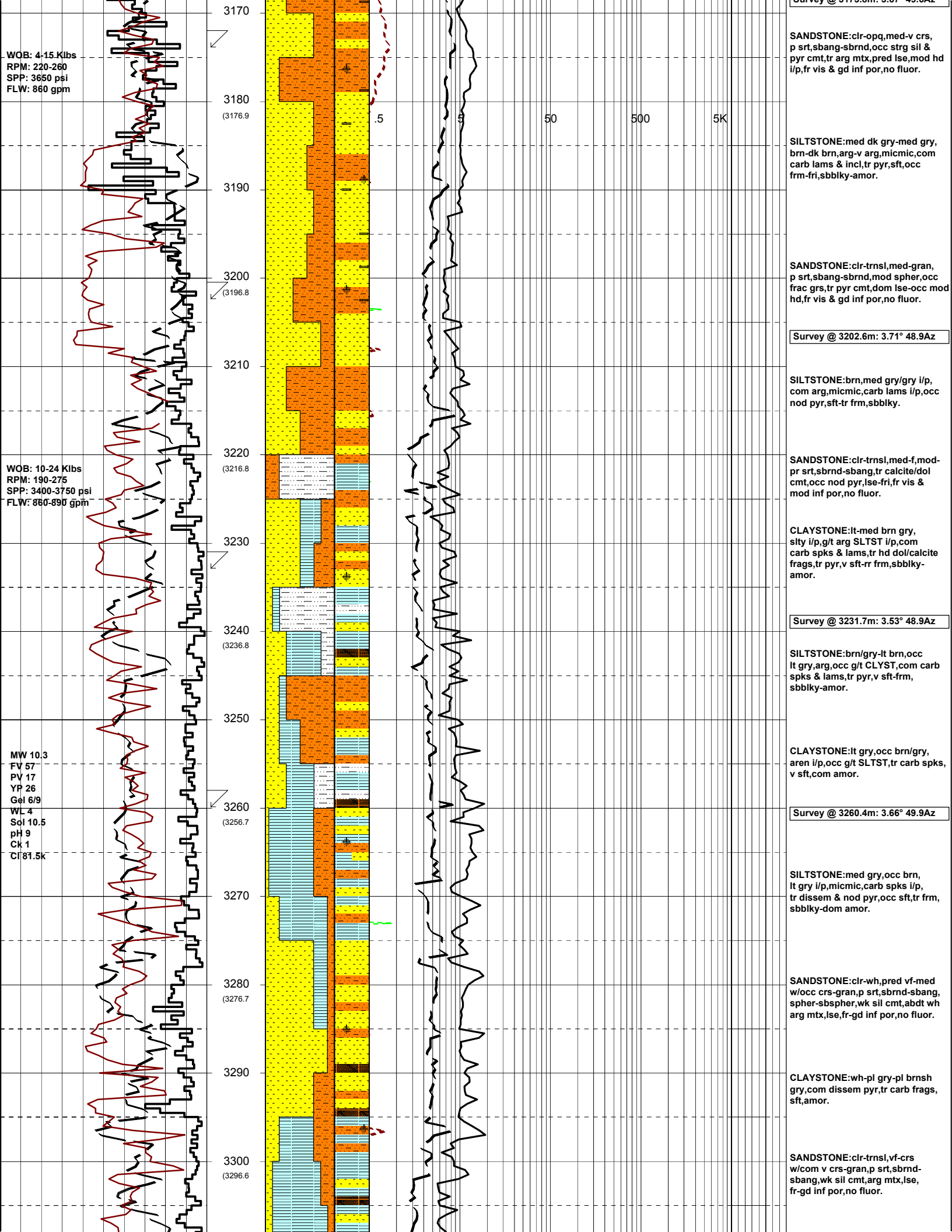
SILTSTONE:pl gry-wh,med
gry i/p,micnic,tr carb spks & lams
i/p,occ dissem pyr,sft-v sft,amor-
sbbiky.

Survey @ 2887.7m: 3.86° 45.6Az

WOB: 10-17 Klbs
RPM: 260
SPP: 3500 psi
FLW: 900 gpm







WOB: 4-15 Klbs
RPM: 220-260
SPP: 3650 psi
FLW: 860 gpm

WOB: 10-24 Klbs
RPM: 190-275
SPP: 3400-3750 psi
FLW: 860-890 gpm

MW 10.3
FV 57
PV 17
YP 26
Gel 6/9
WL 4
Sol 10.5
pH 9
Ck 1
Cl 81.5k

SANDSTONE:clr-opq,med-v crs,
p srt,sbang-sbrnd,occ strg sil &
pyr cmt,tr arg mtx,pred lse,mod hd
i/p,fr vis & gd inf por,no fluor.

SILTSTONE:med dk gry-med gry,
brn-dk brn,arg-v arg,micmic,com
carb lams & incl,tr pyr,sft,occ
frm-fri,sbbiky-amor.

SANDSTONE:clr-trnsl,med-gran,
p srt,sbang-sbrnd,mod spher,occ
frac grs,tr pyr cmt,dom lse-occ mod
hd,fr vis & gd inf por,no fluor.

Survey @ 3202.6m: 3.71° 48.9Az

SILTSTONE:brn,med gry/gry i/p,
com arg,micmic,carb lams i/p,occ
nod pyr,sft-tr frm,sbbiky.

SANDSTONE:clr-trnsl,med-f,mod-
pr srt,sbrnd-sbang,tr calcite/dol
cmt,occ nod pyr,lse-fri,fr vis &
mod inf por,no fluor.

CLAYSTONE:lt-med brn gry,
sly i/p,g/t arg SLTST i/p,com
carb spks & lams,tr hd dol/calcite
frags,tr pyr,v sft-r frm,sbbiky-
amor.

Survey @ 3231.7m: 3.53° 48.9Az

SILTSTONE:brn/gry-lt brn,occ
lt gry,arg,occ g/t CLYST,com carb
spks & lams,tr pyr,v sft-frm,
sbbiky-amor.

CLAYSTONE:lt gry,occ brn/gry,
aren i/p,occ g/t SLTST,tr carb spks,
v sft,com amor.

Survey @ 3260.4m: 3.66° 49.9Az

SILTSTONE:med gry,occ brn,
lt gry i/p,micmic,carb spks i/p,
tr disse & nod pyr,occ sft,frm,
sbbiky-dom amor.

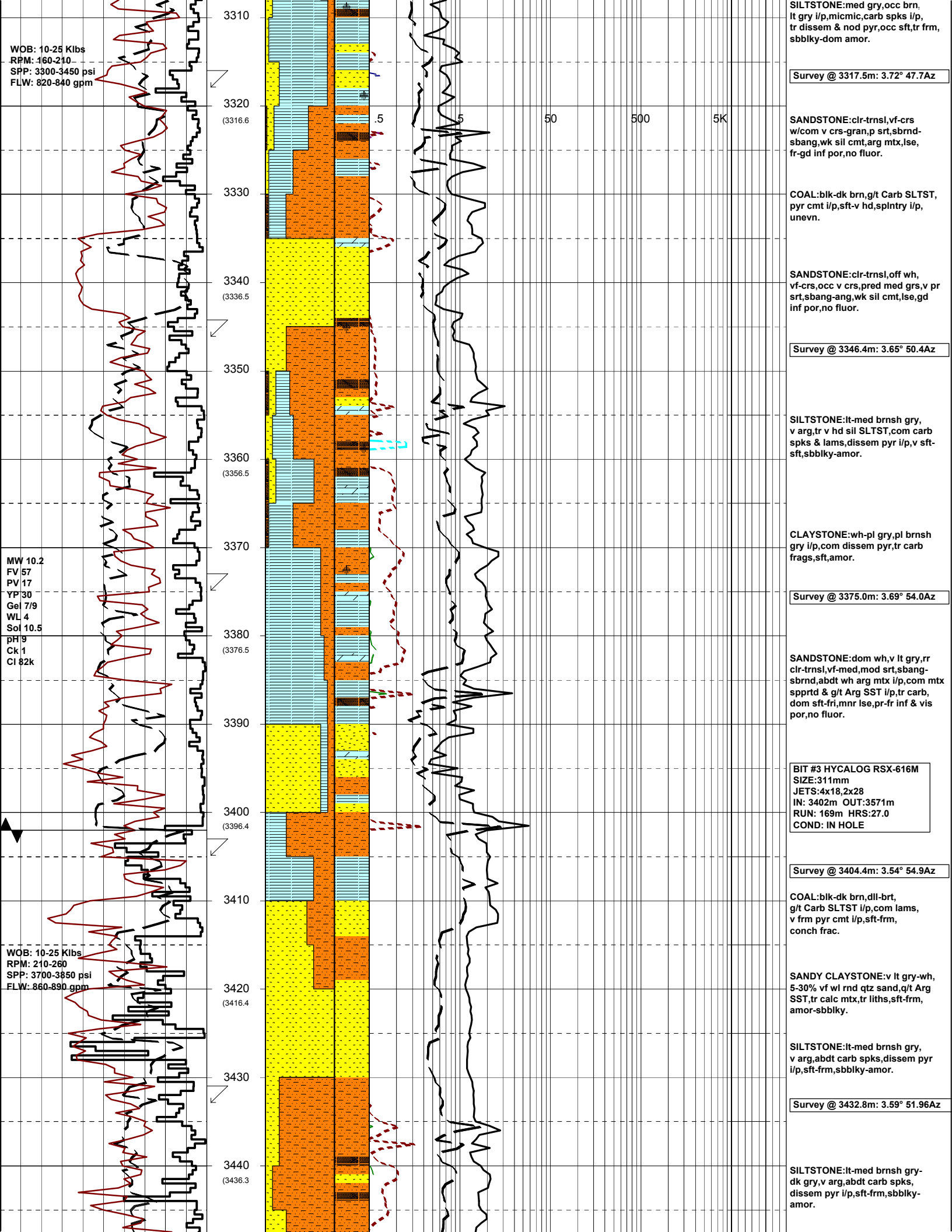
SANDSTONE:clr-wh,pred vf-med
w/occ crs-gran,p srt,sbrnd-sbang,
spher-sbspher,wk sil cmt,abdt wh
arg mtx,lse,fr-gd inf por,no fluor.

CLAYSTONE:wh-pl gry-pl brnsh
gry,com disse pyr,tr carb frags,
sft,amor.

SANDSTONE:clr-trnsl,vf-crs
w/com v crs-gran,p srt,sbrnd-
sbang,wk sil cmt,arg mtx,lse,
fr-gd inf por,no fluor.

50 500 5K

3170
3180 (3176.9)
3190
3200 (3196.8)
3210
3220 (3216.8)
3230
3240 (3236.8)
3250
3260 (3256.7)
3270
3280 (3276.7)
3290
3300 (3296.6)



WOB: 10-25 Klbs
 RPM: 160-210
 SPP: 3300-3450 psi
 FLW: 820-840 gpm

MW 10.2
 FV 57
 PV 17
 YP 30
 Gel 7/9
 WL 4
 Sol 10.5
 pH 9
 Ck 1
 CI 82k

WOB: 10-25 Klbs
 RPM: 210-260
 SPP: 3700-3850 psi
 FLW: 860-890 gpm

Survey @ 3317.5m: 3.72° 47.7Az

SANDSTONE:clr-trnsl,vf-crs w/com v crs-gran,p srt,sbrnd-sbang,wk sil cmt,arg mtx,lse,fr-gd inf por,no fluor.

COAL:blk-dk brn,g/t Carb SLTST,pyr cmt i/p,sft-v hd,splntry i/p,unevn.

SANDSTONE:clr-trnsl,off wh,vf-crs,occ v crs,pred med grs,v pr srt,sbang-ang,wk sil cmt,lse,gd inf por,no fluor.

Survey @ 3346.4m: 3.65° 50.4Az

SILTSTONE:lt-med brnsh gry,v arg,tr v hd sil SLTST,com carb spks & lams,disssem pyr i/p,v sft-sft,sbbiky-amor.

CLAYSTONE:wh-pl gry,pl brnsh gry i/p,com dissem pyr,tr carb frags,sft,amor.

Survey @ 3375.0m: 3.69° 54.0Az

SANDSTONE:dom wh,v lt gry,rr clr-trnsl,vf-med,mod srt,sbang-sbrnd,abdt wh arg mtx i/p,com mtz spprt & g/t Arg SST i/p,tr carb,dom sft-fri,mnr lse,pr-fr inf & vis por,no fluor.

BIT #3 HYCALOG RSX-616M
 SIZE:311mm
 JETS:4x18,2x28
 IN: 3402m OUT:3571m
 RUN: 169m HRS:27.0
 COND: IN HOLE

Survey @ 3404.4m: 3.54° 54.9Az

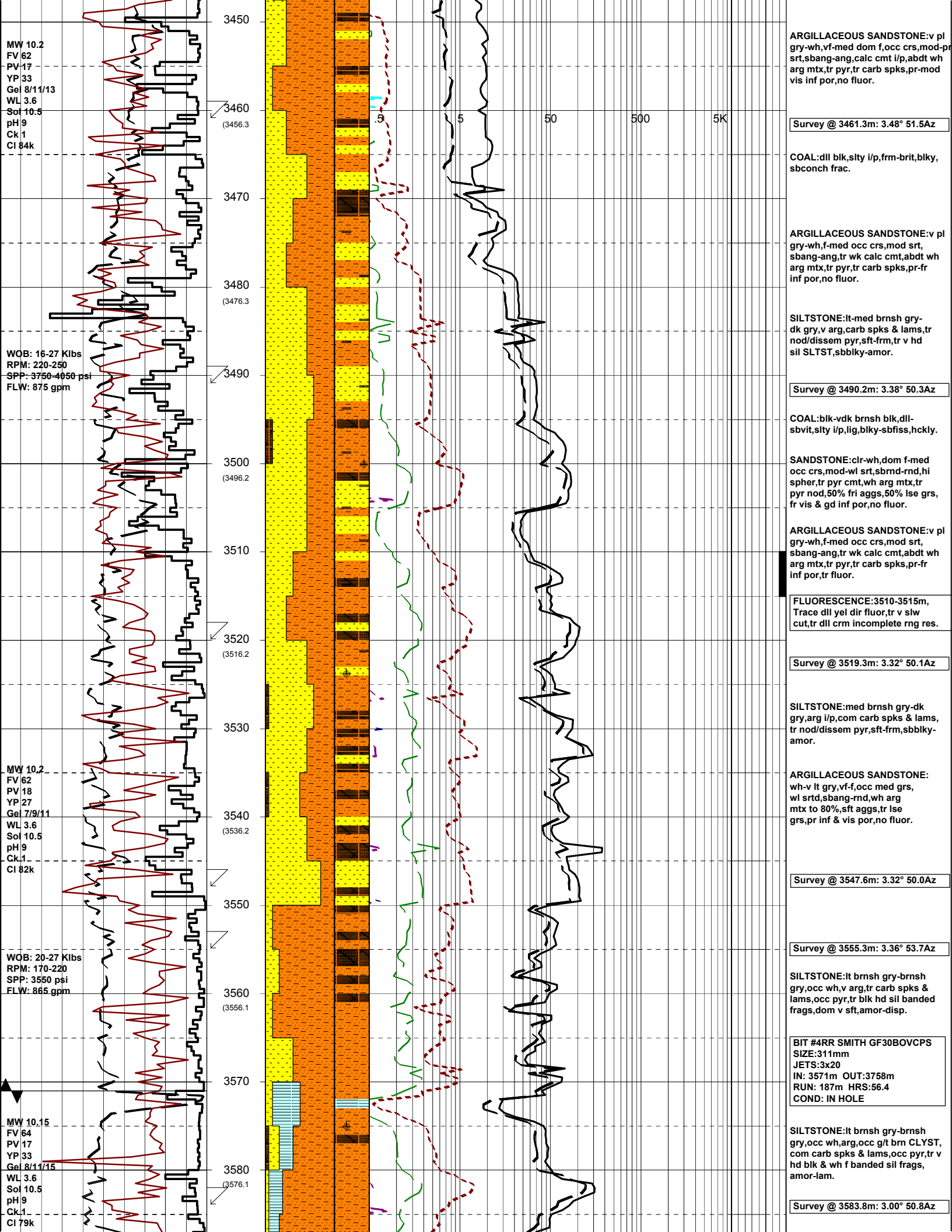
COAL:blk-dk brn,dll-brt,g/t Carb SLTST i/p,com lams,v frm pyr cmt i/p,sft-frm,conch frac.

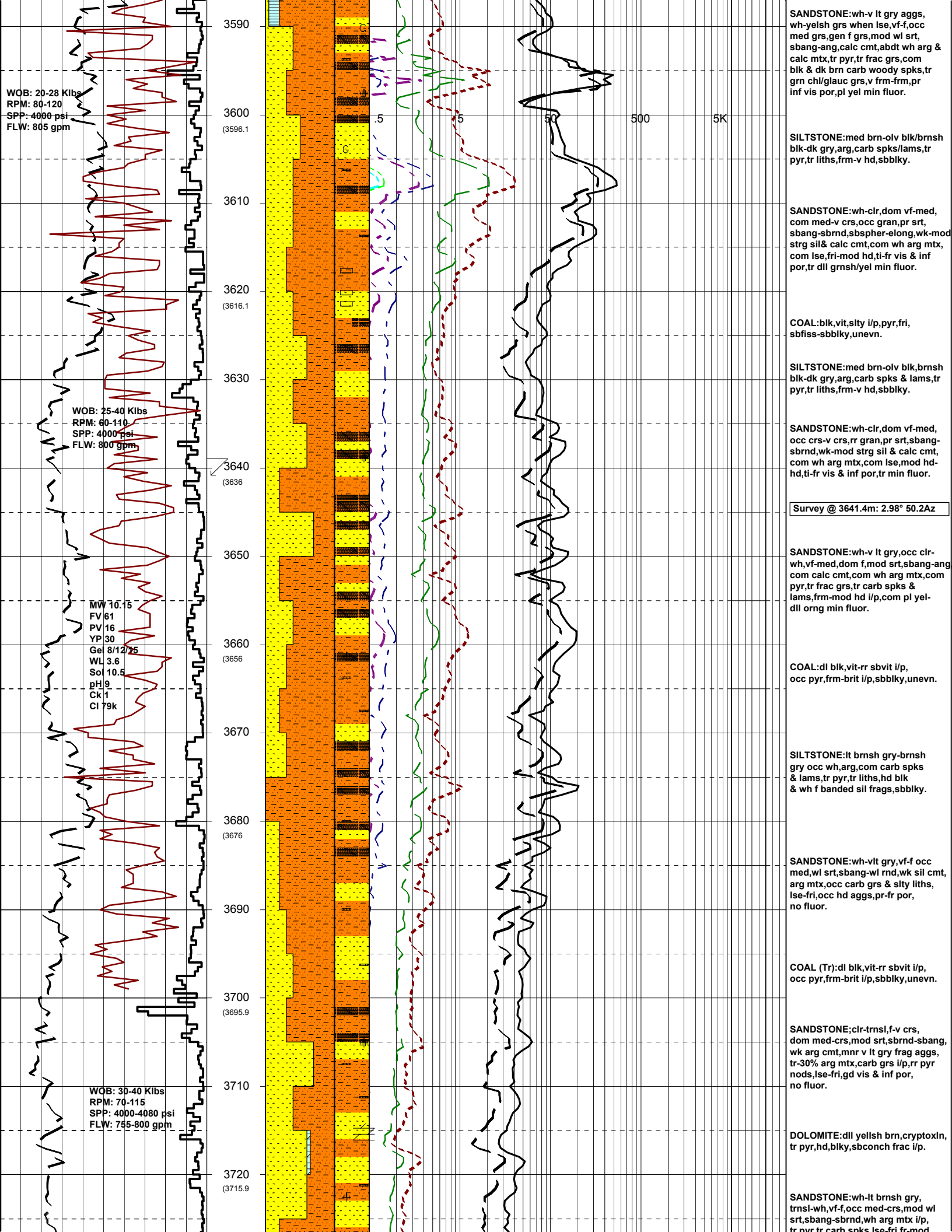
SANDY CLAYSTONE:v lt gry-wh,5-30% vf wl rnd qtz sand,q/t Arg SST,tr calc mtx,tr liths,sft-frm,amor-sbbiky.

SILTSTONE:lt-med brnsh gry,v arg,abdt carb spks,disssem pyr i/p,sft-frm,sbbiky-amor.

Survey @ 3432.8m: 3.59° 51.96Az

SILTSTONE:lt-med brnsh gry-dk gry,v arg,abdt carb spks,disssem pyr i/p,sft-frm,sbbiky-amor.





inf & vis por, tr dll yel min fluor.

SILTSTONE: lt brn-dk brnsh gry, v arg, com carb, vf sand grs i/p, tr pyr, sft-frm, amor-fiss i/p.

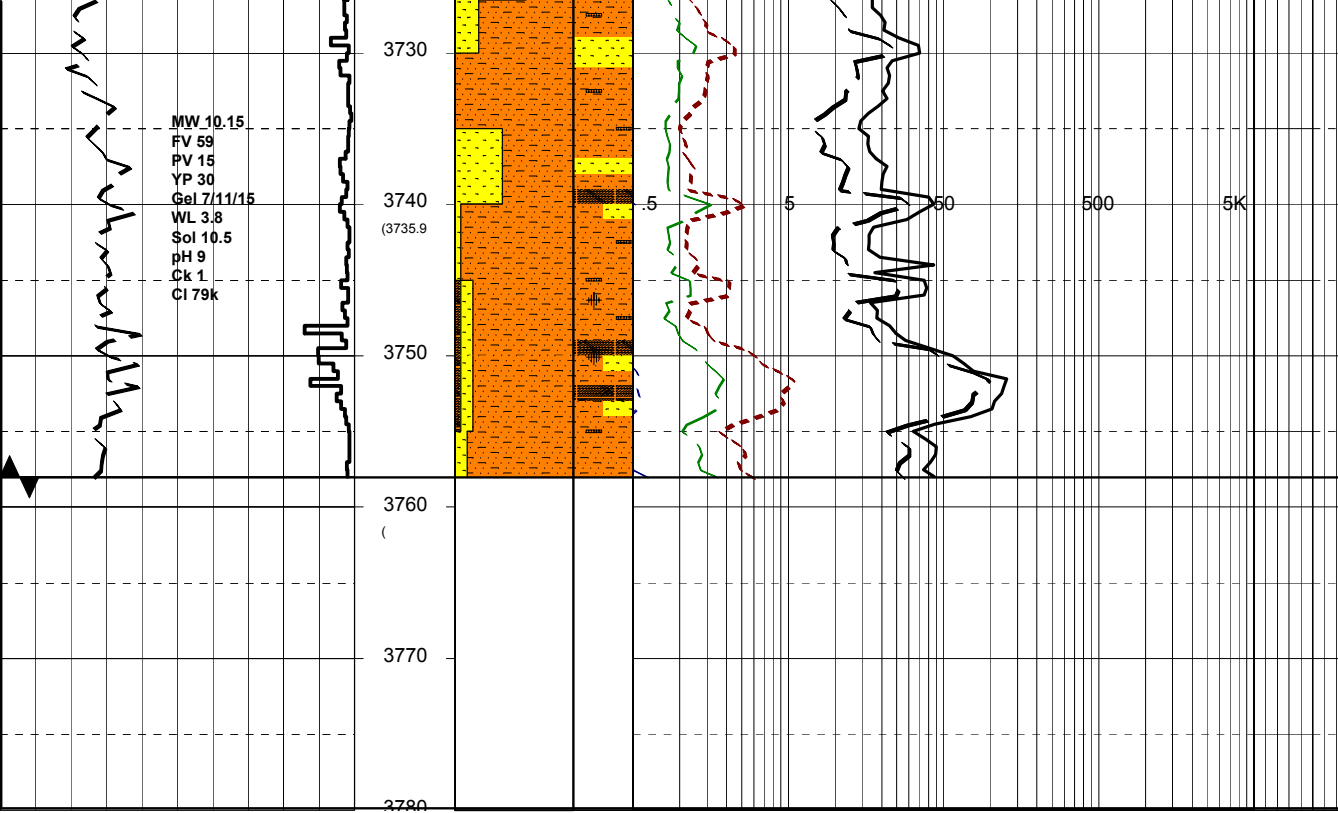
SANDSTONE: wh-v gry, occ mott wh/blk, vf-f, occ med, mod wl srt, sbang-rnd, abdt wh arg mtx, com carb spks i/p, lse-sft, occ v sft, pr inf & vis por, tr dll yel min fluor.

COAL: dll blk, vit-rr sbvit i/p, occ pyr, frm-brit i/p, sbblky, unevn.

Culverin-1 reached 3758 mTD @ 24:00 on 06-01-06

DRILLERS DEPTH: 3758m LOGGERS DEPTH: xxxxm

WIRELINE LOGGING RUNS:
Run 1: PEX-HALS-DSI-GR
Run 2: VSP
Run 3: MDT



MW_10.15
FV 59
PV 15
YP 30
Gel 7/11/15
WL 3.8
Sol 10.5
pH 9
Ck 1
Cl 79k

3730
3740
(3735.9)
3750
3760
3770
3780

.5 5 50 500 5K

