

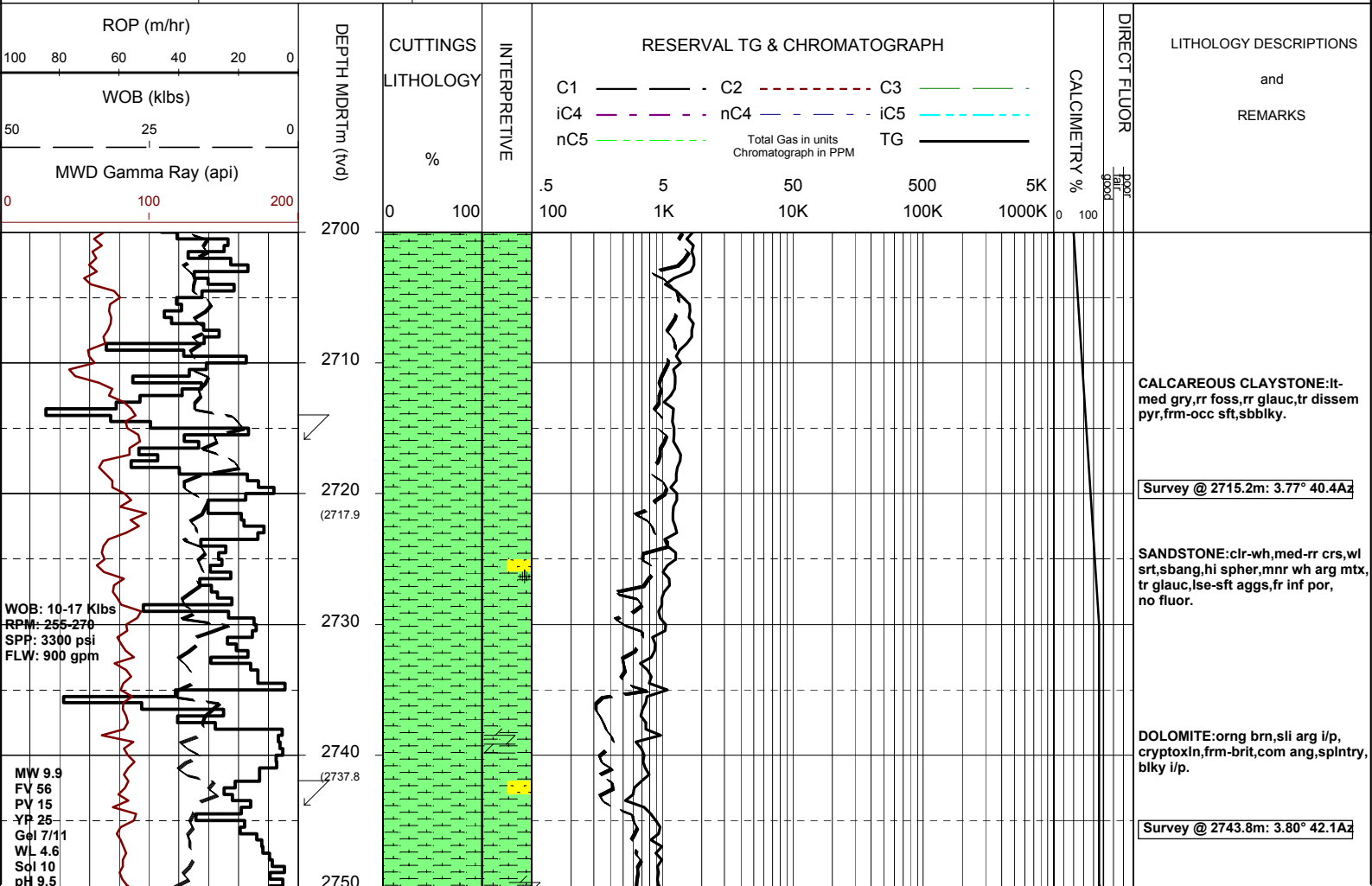


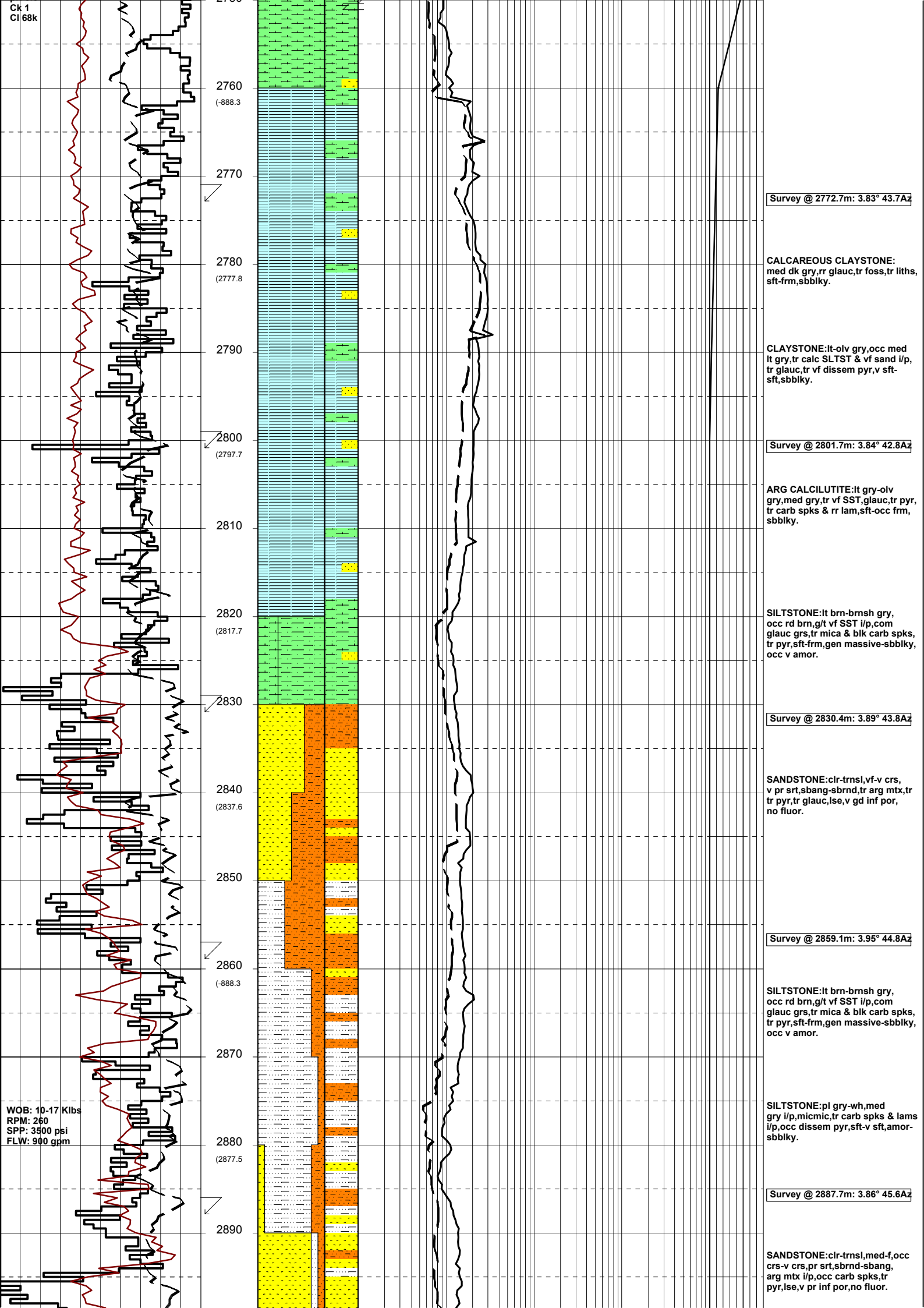
MASTERLOG CULVERIN-1



GENERAL	POSITION	HOLE / CASING INFO	DATE / DEPTH	ENGINEERS
Country : AUSTRALIA	Latitude : 38°24'08.14"S	914mm (36") hole to mMDRT: 650.0m	Spud Date : 16-12-05	D.ADDERLEY
Permit : VIC/P-56	Longitude : 148°39'14.92"E	445mm (17 1/2") hole to mMDRT: 1525m	Total Depth Date : xx-xx-05	T.PLATT
Field : GIPPSLAND	UTM Co-ord X (m E):644 440	311mm (12 1/4") hole to mMDRT: m	Total Depth (mMDRT): m	A.DUNN
Basin : GIPPSLAND	UTM Co-ord Y (m N):5 748 250	762mm (30") Cond. to mMDRT: 650m	True Vertical Depth (mTVDSS): m	S.PROSSER
Well Type : EXPLORATION	RT to MSL (m): 22	340mm (13 3/8") Csg to mMDRT: 1511m	Log Scale : 1/ 500	
Rig Name : OCEAN PATRIOT	RT to Sea Bed (m): 607		Final Status :	

ABBREVIATIONS		LITHOLOGY LEGEND				ENGINEERING LEGEND	
MW Mud Weight	WOB Weight on Bit (klbs)	Claystone	Marl	Lithic Fragment	Cement	Shoe	
FV Funnel Viscosity	RPM Rotations Per Min	Siltstone	Clay, Limestone	Foraminifera	Glauconite	Deviation survey ← RFT	
PV Plastic Viscosity	FLW Flow Rate (gpm)	Shale	Limestone	Fossils	Pyrite	DST ← FIT	
YP Yield Point	SPP Pump Pressure (psi)	Fine SST	Dolomite	Bryozoa	Iron Minerals	TEST Test ← Mud loss	
Gel Gel Strength	RR Re-Run Bit	Medium SST	Coal	Sponges	Mica	Sidewall Core	
WL Water Loss	TG Trip Gas	Coarse SST	Arg. Siltstone	Brachiopoda	Carb Fragments	Core	
KCI Potassium Chloride	CG Connection Gas						
Cl Chlorides	BG Background Gas						
Incl Inclination	DGP Drilled Gas Peak						
Az Azimuth	MM Mud Motor						





2750
2760 (-888.3)
2770
2780 (2777.8)
2790
2800 (2797.7)
2810
2820 (2817.7)
2830
2840 (2837.6)
2850
2860 (-888.3)
2870
2880 (2877.5)
2890

Survey @ 2772.7m: 3.83° 43.7Az

CALCAREOUS CLAYSTONE:
med dk gry,rr glauc,tr foss,tr liths,
sft frm,sbbkly.

CLAYSTONE:lt-olv gry,occ med
lt gry,tr calc SLTST & vf sand i/p,
tr glauc,tr vf dissep pyr,v sft-
sft,sbbkly.

Survey @ 2801.7m: 3.84° 42.8Az

ARG CALCILUTITE:lt gry-olv
gry,med gry,tr vf SST,glauc,tr pyr,
tr carb spks & rr lam,sft-occ frm,
sbbkly.

SILTSTONE:lt brn-brnsh gry,
occ rd brn,g/t vf SST i/p,com
glauc grs,tr mica & blk carb spks,
tr pyr,sft-frm,gen massive-sbbkly,
occ v amor.

Survey @ 2830.4m: 3.89° 43.8Az

SANDSTONE:clr-trnsl,vf-v crs,
v pr srt,sbang-sbrnd,tr arg mtx,tr
tr pyr,tr glauc,lse,v gd inf por,
no fluor.

Survey @ 2859.1m: 3.95° 44.8Az

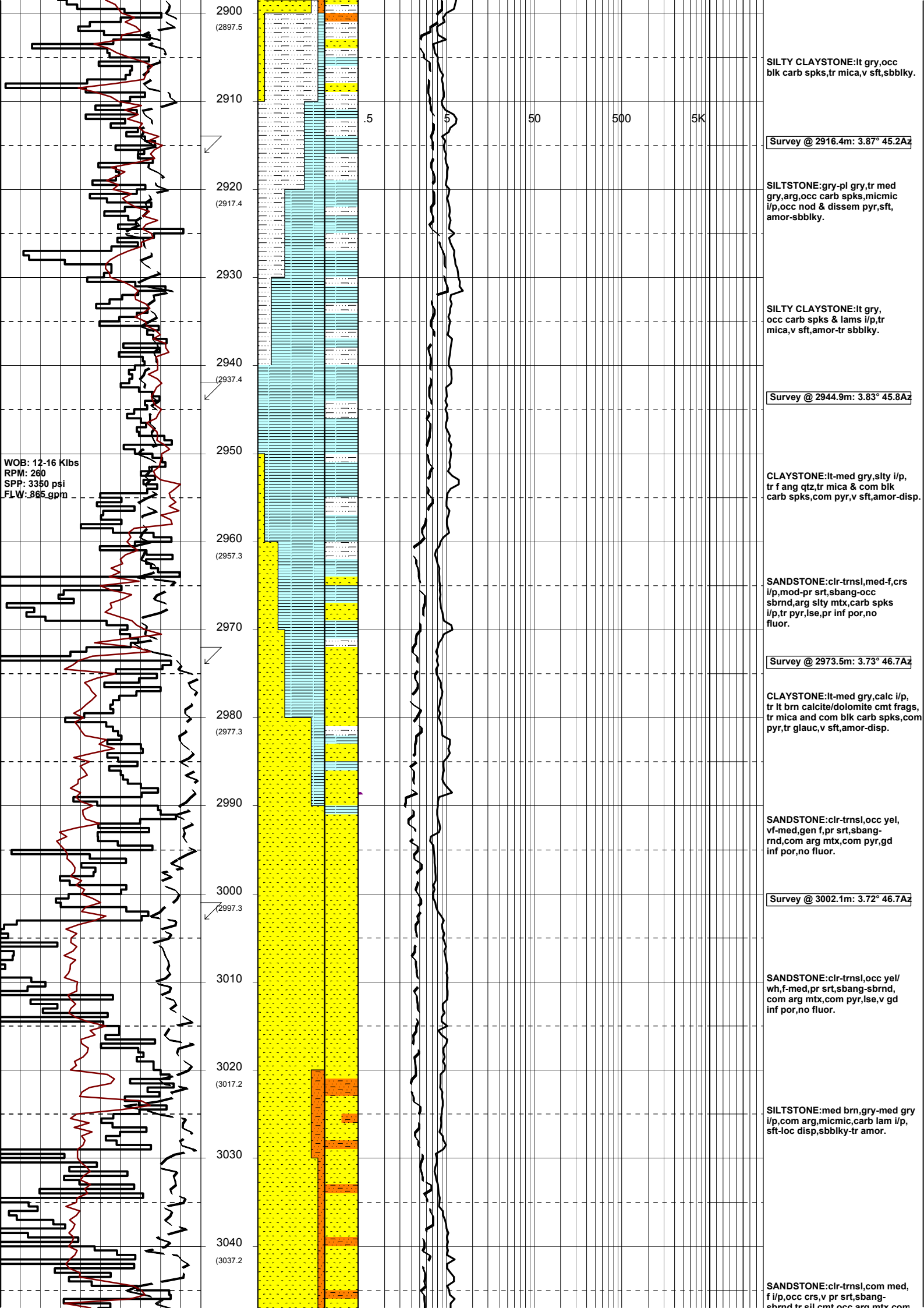
SILTSTONE:lt brn-brnsh gry,
occ rd brn,g/t vf SST i/p,com
glauc grs,tr mica & blk carb spks,
tr pyr,sft-frm,gen massive-sbbkly,
occ v amor.

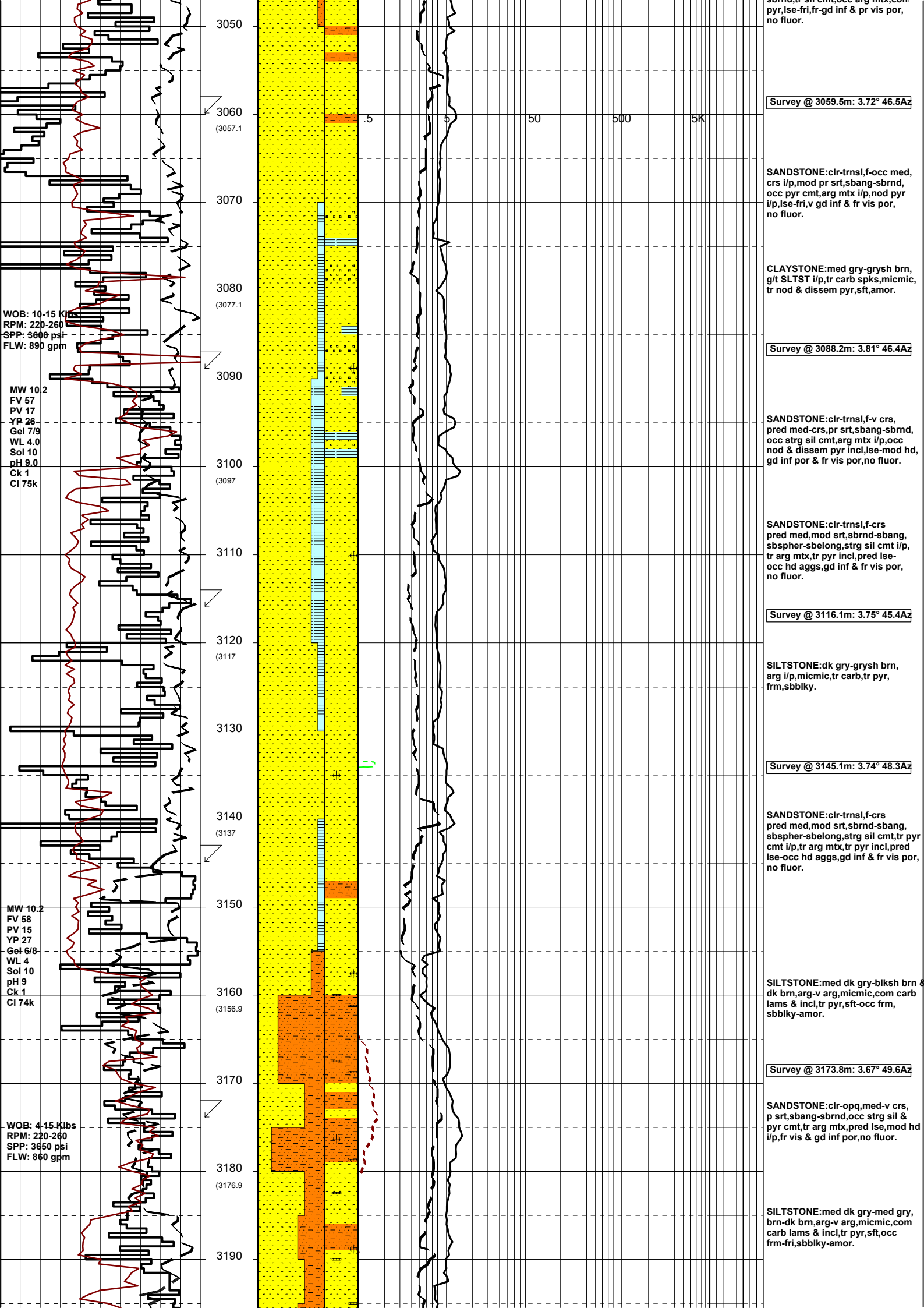
SILTSTONE:pl gry-wh,med
gry i/p,micmic,tr carb spks & lams
i/p,occ dissep pyr,sft-v sft,amor-
sbbkly.

Survey @ 2887.7m: 3.86° 45.6Az

SANDSTONE:clr-trnsl,med-f,occ
crs-v crs,pr srt,sbrnd-sbang,
arg mtx i/p,occ carb spks,tr
pyr,lse,v pr inf por,no fluor.

WOB: 10-17 Klbs
RPM: 260
SPP: 3500 psi
FLW: 900 gpm





Survey @ 3059.5m: 3.72° 46.5Az

SANDSTONE:clr-trnsl,f-occ med, crs i/p,mod pr srt,sbang-sbrnd, occ pyr cmt,arg mtx i/p,nod pyr i/p,lse-fri,v gd inf & fr vis por, no fluor.

CLAYSTONE:med gry-grysh brn, g/t SLTST i/p,tr carb spks,micmic, tr nod & dissem pyr,sft,amor.

Survey @ 3088.2m: 3.81° 46.4Az

SANDSTONE:clr-trnsl,f-v crs, pred med-crs,pr srt,sbang-sbrnd, occ strg sil cmt,arg mtx i/p,occ nod & dissem pyr incl,lse-mod hd, gd inf por & fr vis por,no fluor.

SANDSTONE:clr-trnsl,f-crs pred med,mod srt,sbrnd-sbang, sbspher-sbelong,strg sil cmt i/p, tr arg mtx,tr pyr incl,pred lse-occ hd aggs,gd inf & fr vis por, no fluor.

Survey @ 3116.1m: 3.75° 45.4Az

SILTSTONE:dk gry-grysh brn, arg i/p,micmic,tr carb,tr pyr, frm,sbbkly.

Survey @ 3145.1m: 3.74° 48.3Az

SANDSTONE:clr-trnsl,f-crs pred med,mod srt,sbrnd-sbang, sbspher-sbelong,strg sil cmt,tr pyr cmt i/p,tr arg mtx,tr pyr incl,pred lse-occ hd aggs,gd inf & fr vis por, no fluor.

SILTSTONE:med dk gry-blksh brn & dk brn,arg-v arg,micmic,com carb lams & incl,tr pyr,sft-occ frm, sbbkly-amor.

Survey @ 3173.8m: 3.67° 49.6Az

SANDSTONE:clr-opq,med-v crs, p srt,sbang-sbrnd,occ strg sil & pyr cmt,tr arg mtx,pred lse,mod hd i/p,fr vis & gd inf por,no fluor.

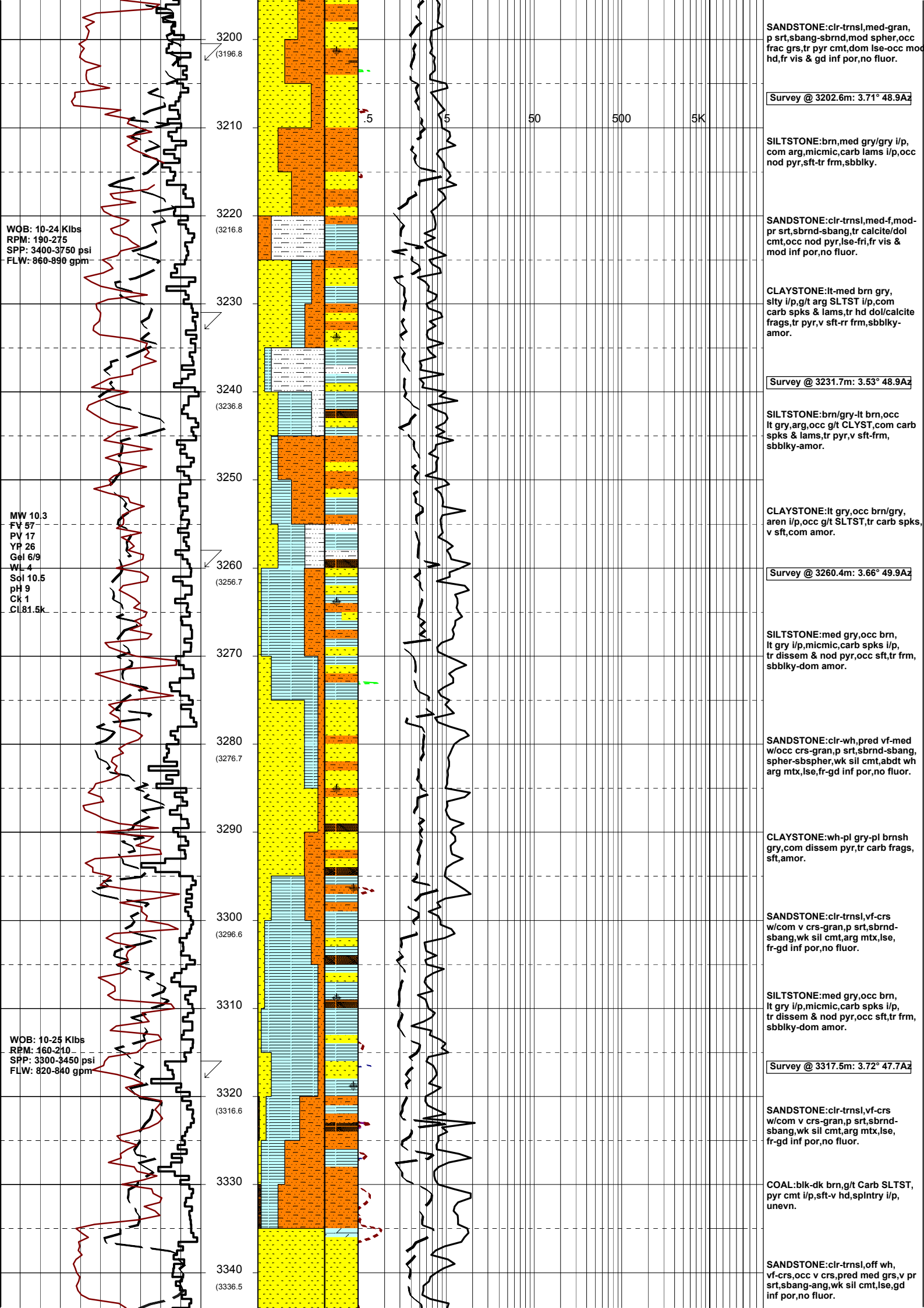
SILTSTONE:med dk gry-med gry, brn-dk brn,arg-v arg,micmic,com carb lams & incl,tr pyr,sft,occ frm-fri,sbbkly-amor.

WOB: 10-15 Klb
RPM: 220-260
SPP: 3600 psi
FLW: 890 gpm

MW 10.2
FV 57
PV 17
YP 26
Gel 7/9
WL 4.0
Sol 10
pH 9.0
CK 1
CI 75k

MW 10.2
FV 58
PV 15
YP 27
Gel 6/8
WL 4
Sol 10
pH 9
CK 1
CI 74k

WQB: 4-15 Klbs
RPM: 220-260
SPP: 3650 psi
FLW: 860 gpm



SANDSTONE: clr-trnsl, med-gran, p srt, sbang-sbrnd, mod spher, occ frac grs, tr pyr cmt, dom lse-occ mod hd, fr vis & gd inf por, no fluor.

Survey @ 3202.6m: 3.71° 48.9Az

SILTSTONE: brn, med gry/gry i/p, com arg, micmic, carb lams i/p, occ nod pyr, sft-tr frm, sbbkly.

SANDSTONE: clr-trnsl, med-f, mod-pr srt, sbrnd-sbang, tr calcite/dol cmt, occ nod pyr, lse-fri, fr vis & mod inf por, no fluor.

CLAYSTONE: lt-med brn gry, sity i/p, g/t arg SLTST i/p, com carb spks & lams, tr hd dol/calcite frags, tr pyr, v sft-tr frm, sbbkly-amor.

Survey @ 3231.7m: 3.53° 48.9Az

SILTSTONE: brn/gry-lt brn, occ lt gry, arg, occ g/t CLYST, com carb spks & lams, tr pyr, v sft-frm, sbbkly-amor.

CLAYSTONE: lt gry, occ brn/gry, aren i/p, occ g/t SLTST, tr carb spks, v sft, com amor.

Survey @ 3260.4m: 3.66° 49.9Az

SILTSTONE: med gry, occ brn, lt gry i/p, micmic, carb spks i/p, tr disse & nod pyr, occ sft, tr frm, sbbkly-dom amor.

SANDSTONE: clr-wh, pred vf-med w/occ crs-gran, p srt, sbrnd-sbang, spher-sbspher, wk sil cmt, abdt wh arg mtx, lse, fr-gd inf por, no fluor.

CLAYSTONE: wh-pl gry-pl brnsh gry, com disse pyr, tr carb frags, sft, amor.

SANDSTONE: clr-trnsl, vf-crs w/com v crs-gran, p srt, sbrnd-sbang, wk sil cmt, arg mtx, lse, fr-gd inf por, no fluor.

SILTSTONE: med gry, occ brn, lt gry i/p, micmic, carb spks i/p, tr disse & nod pyr, occ sft, tr frm, sbbkly-dom amor.

Survey @ 3317.5m: 3.72° 47.7Az

SANDSTONE: clr-trnsl, vf-crs w/com v crs-gran, p srt, sbrnd-sbang, wk sil cmt, arg mtx, lse, fr-gd inf por, no fluor.

COAL: blk-dk brn, g/t Carb SLTST, pyr cmt i/p, sft-v hd, splntry i/p, unev.

SANDSTONE: clr-trnsl, off wh, vf-crs, occ v crs, pred med grs, v pr srt, sbang-ang, wk sil cmt, lse, gd inf por, no fluor.

WOB: 10-24 Klbs
RPM: 190-275
SPP: 3400-3750 psi
FLW: 860-890 gpm

MW 10.3
FV 57
PV 17
YP 26
Gel 6/9
WL 4
Sol 10.5
pH 9
Ck 1
Cl 81.5k

WOB: 10-25 Klbs
RPM: 160-210
SPP: 3300-3450 psi
FLW: 820-840 gpm

Survey @ 3346.4m: 3.65° 50.4Az

SILTSTONE:lt-med brnsh gry, v arg,tr v hd sil SLTST,com carb spks & lams,dissemin pyr i/p,v sft-sft,sbbiky-amor.

CLAYSTONE:wh-pl gry,pl brnsh gry i/p,com dissemin pyr,tr carb frags,sft,amor.

Survey @ 3375.0m: 3.69° 54.0Az

SANDSTONE:dom wh,v lt gry,rr clr-trnsl,vf-med,mod srt,sbang-sbrnd,abdt wh arg mtx i/p,com mtz spprtd & g/t Arg SST i/p,tr carb, dom sft-fri,mnr lse,pr-fr inf & vis por,no fluor.

BIT #3 HYCALOG RSX-616M
SIZE:311mm
JETS:4x18,2x28
IN: 3402m OUT:
RUN: HRS:
COND:

MW 10.2
FV 57
PV 17
YP 30
Ge 7/9
WL 4
Sol 10.5
pH 9
Ck 1
Cl 82k

3350
3360 (3356.5)
3370
3380 (3376.5)
3390
3400 (3396.4)
3410

