

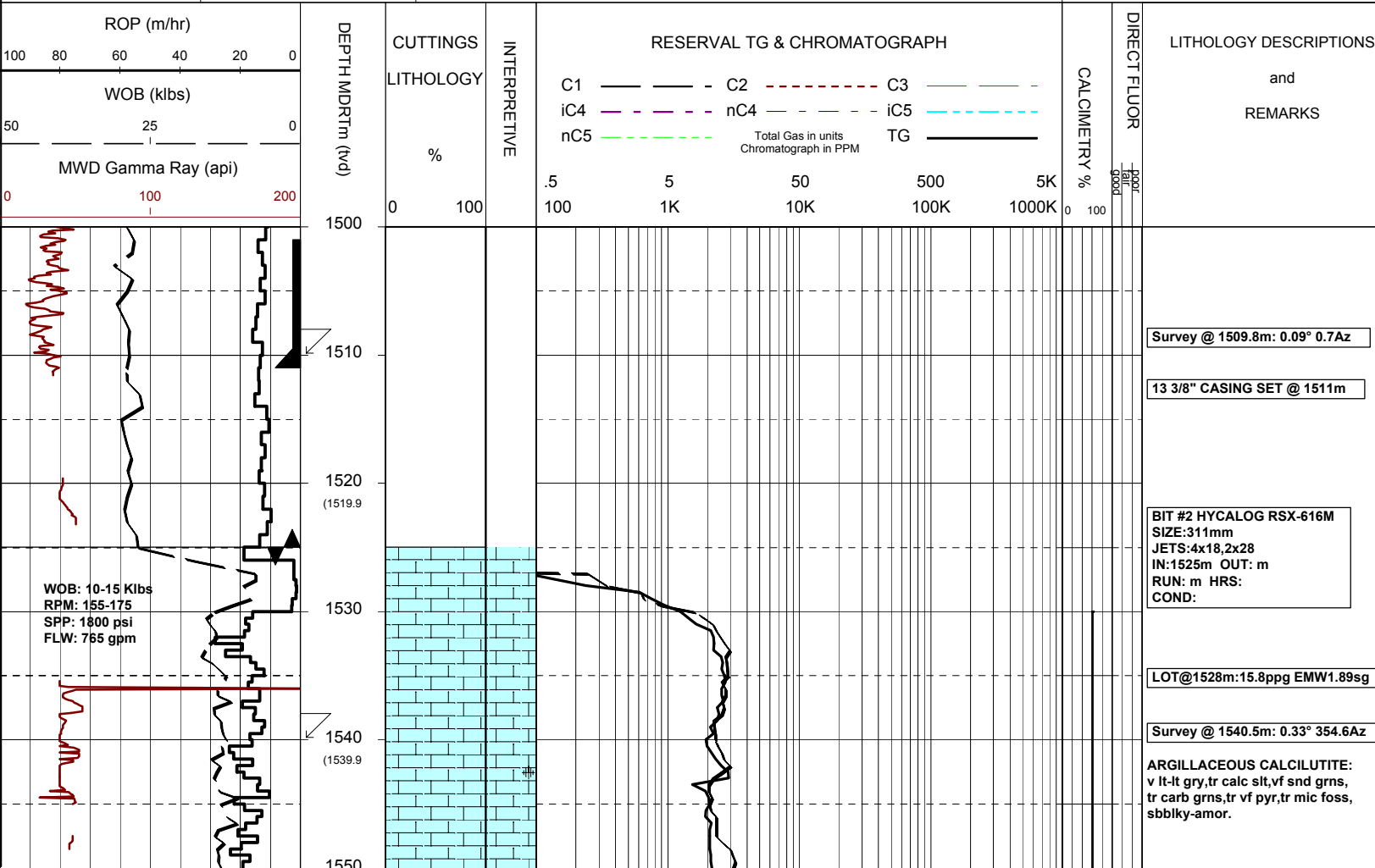


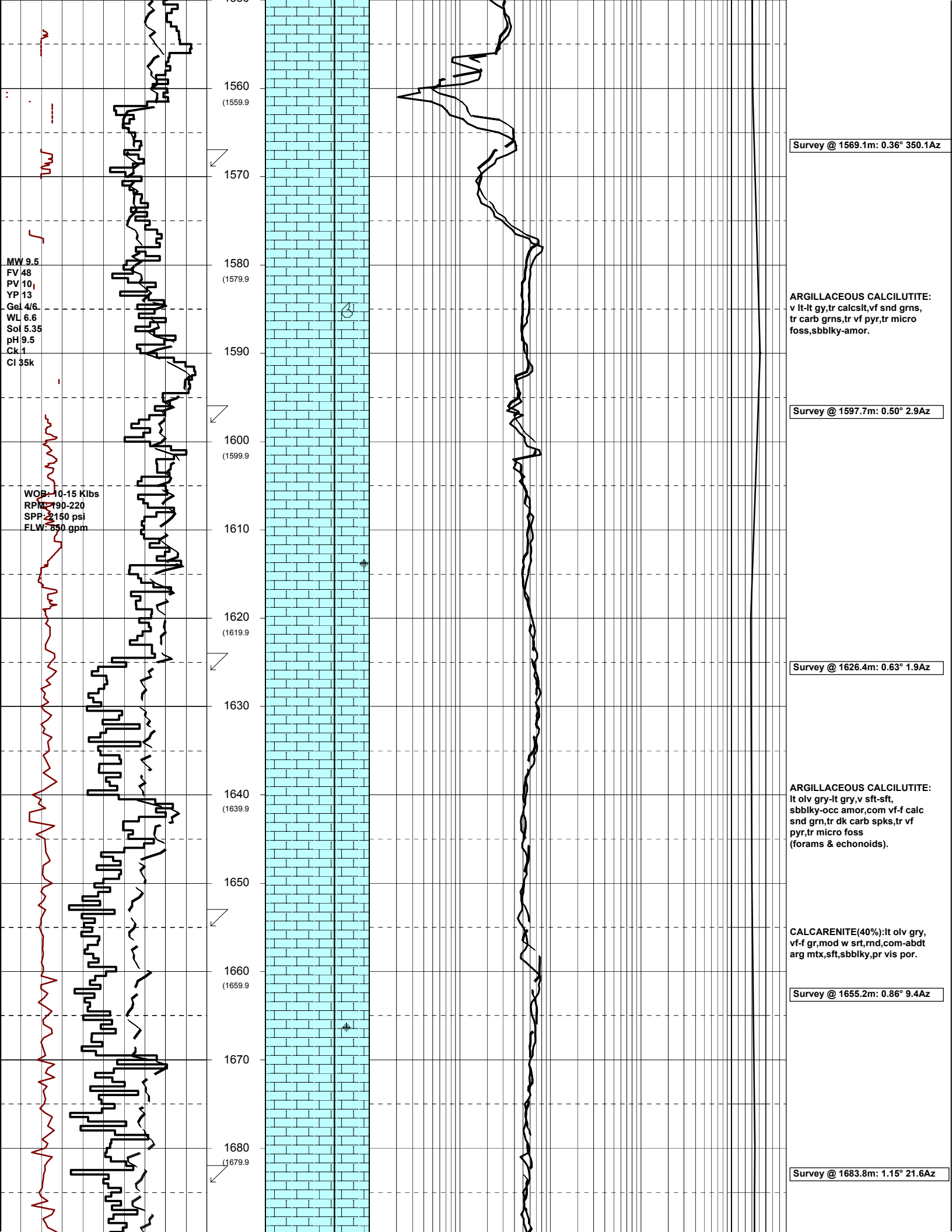
# MASTERLOG CULVERIN-1



GENERAL	POSITION	HOLE / CASING INFO	DATE / DEPTH	ENGINEERS
Country : AUSTRALIA	Latitude : 38°24'08.14"S	914mm (36") hole to mMDRT: 650.0m	Spud Date : 16-12-05	D.ADDERLEY
Permit : VIC/P-56	Longitude : 148°39'14.92"E	445mm (17 1/2") hole to mMDRT: 1525m	Total Depth Date : xx-xx-05	T.PLATT
Field : GIPPSLAND	UTM Co-ord X (m E):644 440	311mm (12 1/4") hole to mMDRT: m	Total Depth (mMDRT): m	A.DUNN
Basin : GIPPSLAND	UTM Co-ord Y (m N):5 748 250	762mm (30") Cond. to mMDRT: 650m	True Vertical Depth (mTVDSS): m	S.PROSSER
Well Type : EXPLORATION RT to MSL (m): 22		340mm (13 3/8") Csg to mMDRT: 1511m	Log Scale : 1/ 500	
Rig Name : OCEAN PATRIOT to Sea Bed (m): 607			Final Status :	

ABBREVIATIONS		LITHOLOGY LEGEND				ENGINEERING LEGEND	
MW Mud Weight	WOB Weight on Bit (klbs)	Claystone	Marl	Lithic Fragment	Cement	Shoe	
FV Funnel Viscosity	RPM Rotations Per Min	Siltstone	Clay, Limestone	Foraminifera	Glaucconite	Deviation survey	← RFT
PV Plastic Viscosity	FLW Flow Rate (gpm)	Shale	Limestone	Fossils	Pyrite	DST	← FIT
YP Yield Point	SPP Pump Pressure (psi)	Fine SST	Dolomite	Bryozoa	Iron Minerals	Test	↘ Mud loss
Gel Gel Strength	RR Re-Run Bit	Medium SST	Coal	Sponges	Mica	Sidewall Core	↗ Mud gain
WL Water Loss	TG Trip Gas	Coarse SST	Volcanics	Brachiopoda	Carb Fragments	Core	
KCI Potassium Chloride	CG Connection Gas						
Cl Chlorides	BG Background Gas						
Incl Inclination	DGP Drilled Gas Peak						
Az Azimuth	MM Mud Motor						





Survey @ 1569.1m: 0.36° 350.1Az

Survey @ 1597.7m: 0.50° 2.9Az

Survey @ 1626.4m: 0.63° 1.9Az

Survey @ 1655.2m: 0.86° 9.4Az

Survey @ 1683.8m: 1.15° 21.6Az

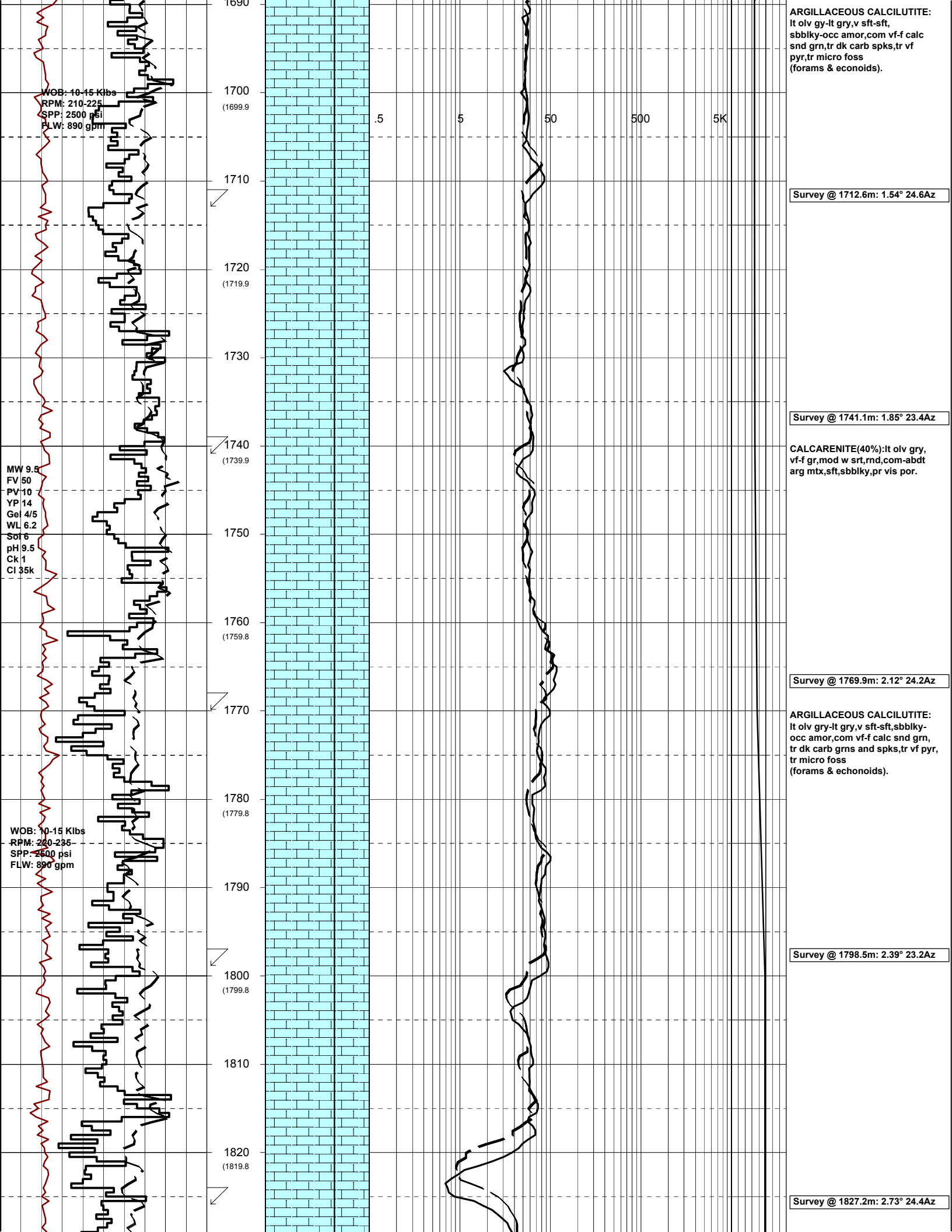
MW 9.5  
 FV 48  
 PV 10,  
 YP 13  
 Gel 4/6  
 WL 6.6  
 Sol 5.35  
 pH 9.5  
 Ck 1  
 CI 35k

WOB 10-15 Klbs  
 RPM 190-220  
 SPP 2150 psi  
 FLW 850 gpm

**ARGILLACEOUS CALCILUTITE:**  
 v lt-lt gy, tr calcslt, vf snd grns,  
 tr carb grns, tr vf pyr, tr micro  
 foss, sbbkly-amor.

**ARGILLACEOUS CALCILUTITE:**  
 lt olv gry-lt gry, v sft-sft,  
 sbbkly-occ amor, com vf-f calc  
 snd grn, tr dk carb spks, tr vf  
 pyr, tr micro foss  
 (forams & echonoids).

**CALCARENITE(40%):**lt olv gry,  
 vf-f gr, mod w srt, md, com-abdt  
 arg mtx, sft, sbbkly, pr vis por.



ARGILLACEOUS CALCILUTITE:  
It olv gy-lt gry,v sft-sft,  
sbbiky-occ amor,com vf-f calc  
snd grn,tr dk carb spks,tr vf  
pyr,tr micro foss  
(forams & econoids).

Survey @ 1712.6m: 1.54° 24.6Az

Survey @ 1741.1m: 1.85° 23.4Az

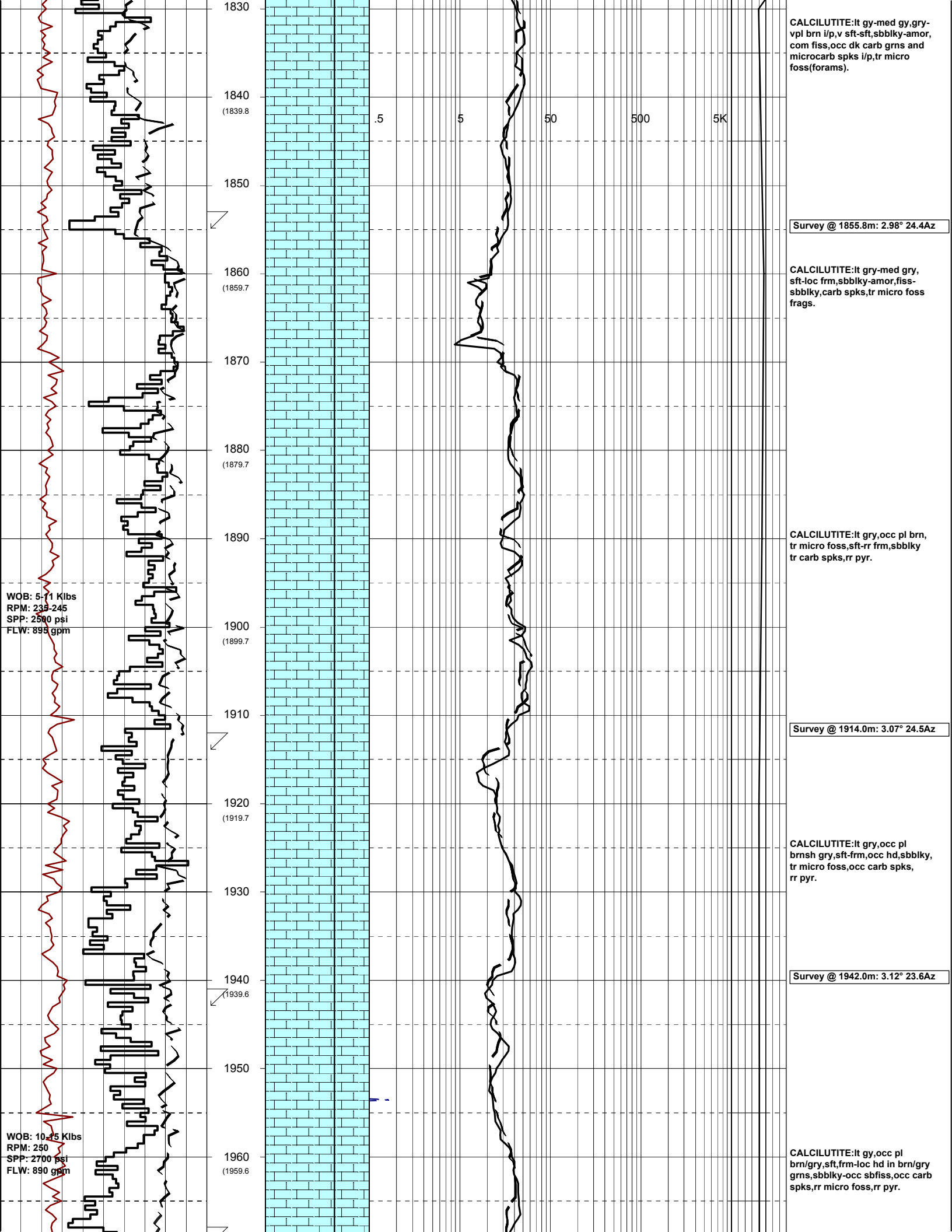
CALCARENITE(40%):It olv gry,  
vf-f gr,mod w srt,rd,com-abdt  
arg mtx,sft,sbbiky,pr vis por.

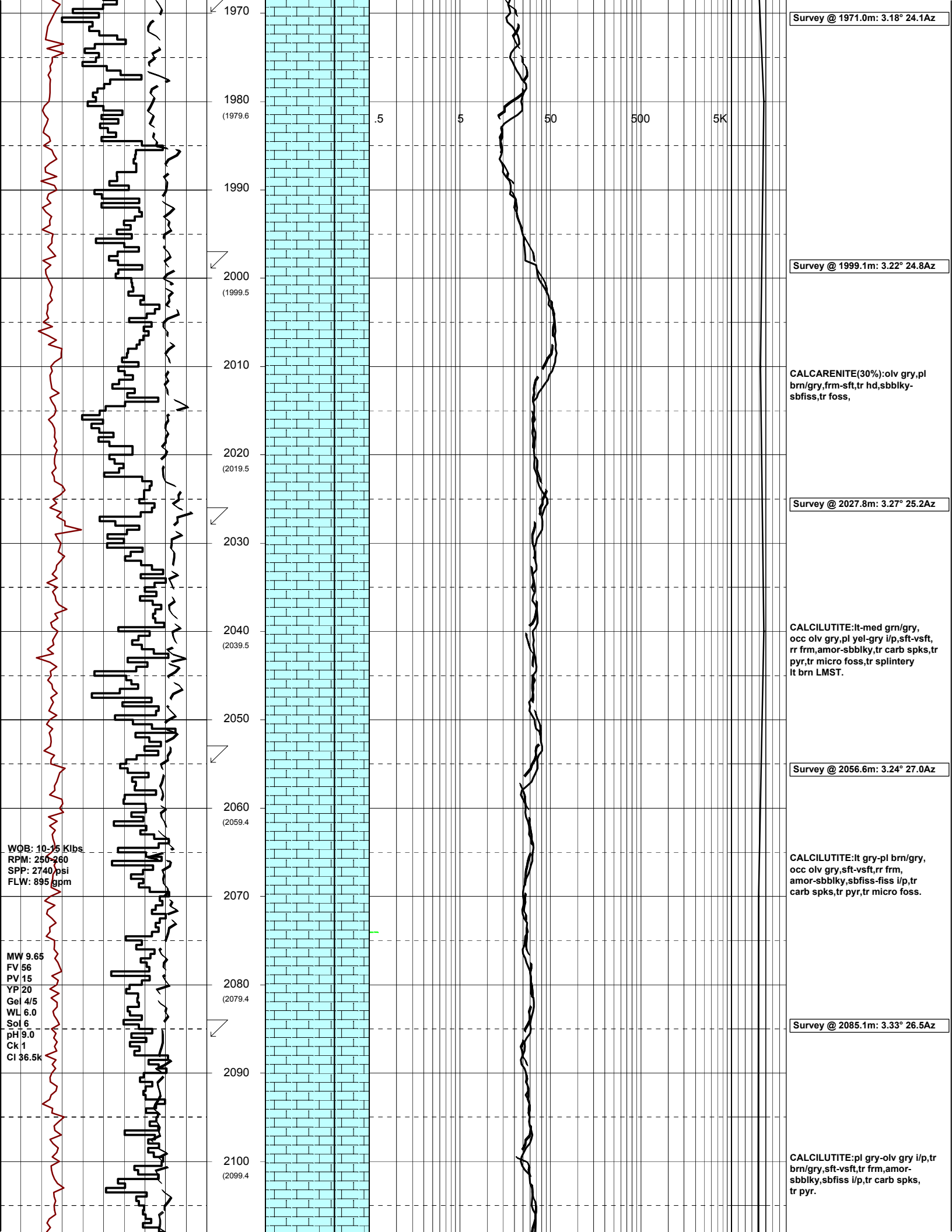
Survey @ 1769.9m: 2.12° 24.2Az

ARGILLACEOUS CALCILUTITE:  
It olv gry-lt gry,v sft-sft,sbbiky-  
occ amor,com vf-f calc snd grn,  
tr dk carb grns and spks,tr vf pyr,  
tr micro foss  
(forams & econoids).

Survey @ 1798.5m: 2.39° 23.2Az

Survey @ 1827.2m: 2.73° 24.4Az





Survey @ 1971.0m: 3.18° 24.1Az

1970

1980  
(1979.6)

.5

5

50

500

5K

1990

2000  
(1999.5)

Survey @ 1999.1m: 3.22° 24.8Az

2010

2020  
(2019.5)

CALCARENITE(30%):olv gry,pl  
brn/gry,frm-sft,tr hd,sbblky-  
sbfiss,tr foss,

2030

Survey @ 2027.8m: 3.27° 25.2Az

2040  
(2039.5)

CALCILUTITE:lt-med grn/gry,  
occ olv gry,pl yel-gry i/p,sft-vsft,  
rr frm,amor-sbblky,tr carb spks,tr  
pyr,tr micro foss,tr splintery  
lt brn LMST.

2050

2060  
(2059.4)

Survey @ 2056.6m: 3.24° 27.0Az

WOB: 10-15 Klbs  
RPM: 250-260  
SPP: 2740 psi  
FLW: 895 gpm

CALCILUTITE:lt gry-pl brn/gry,  
occ olv gry,sft-vsft,rr frm,  
amor-sbblky,sbfiss-fiss i/p,tr  
carb spks,tr pyr,tr micro foss.

2070

MW 9.65  
FV 56  
PV 15  
YP 20  
Gel 4/5  
WL 6.0  
Sol 6  
pH 9.0  
Ck 1  
CI 36.5k

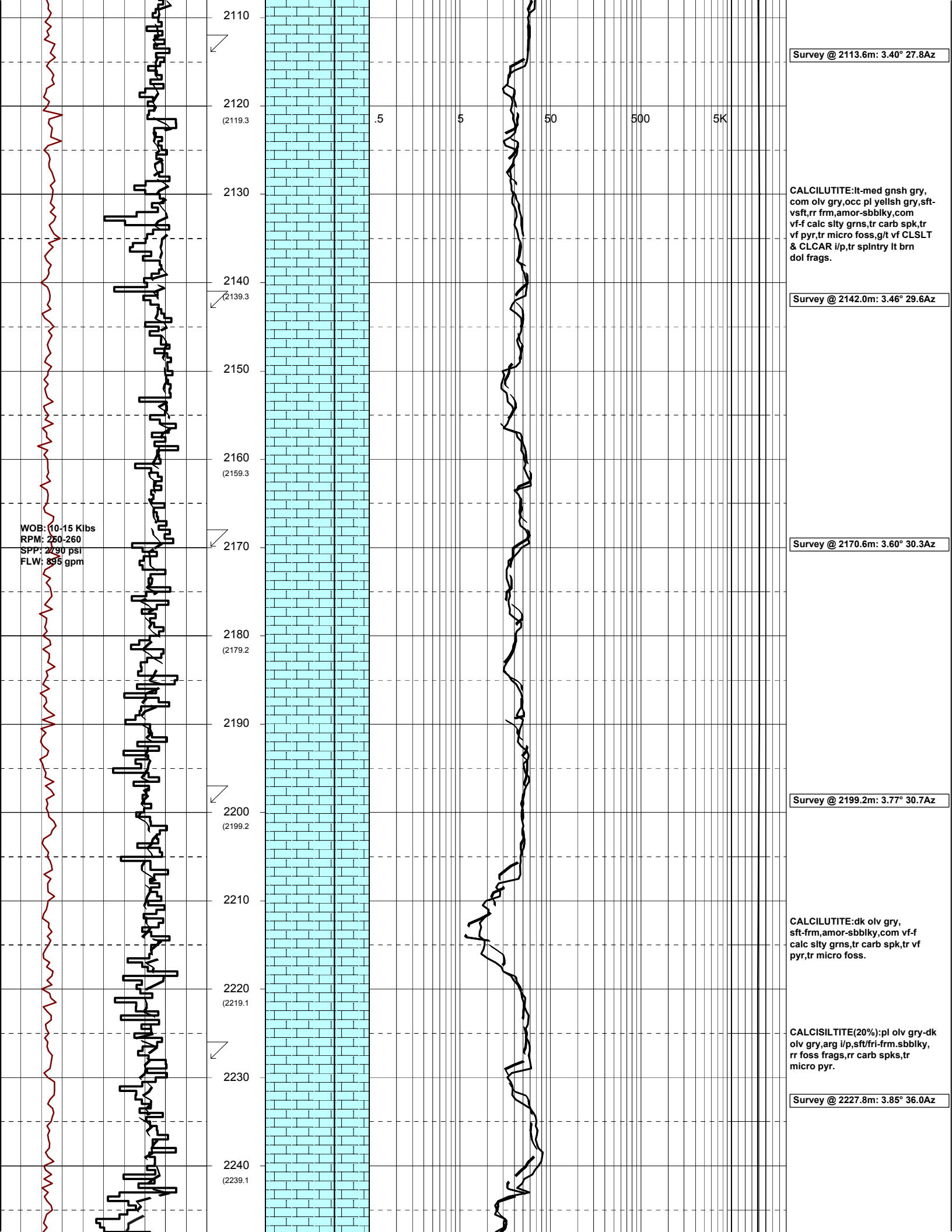
2080  
(2079.4)

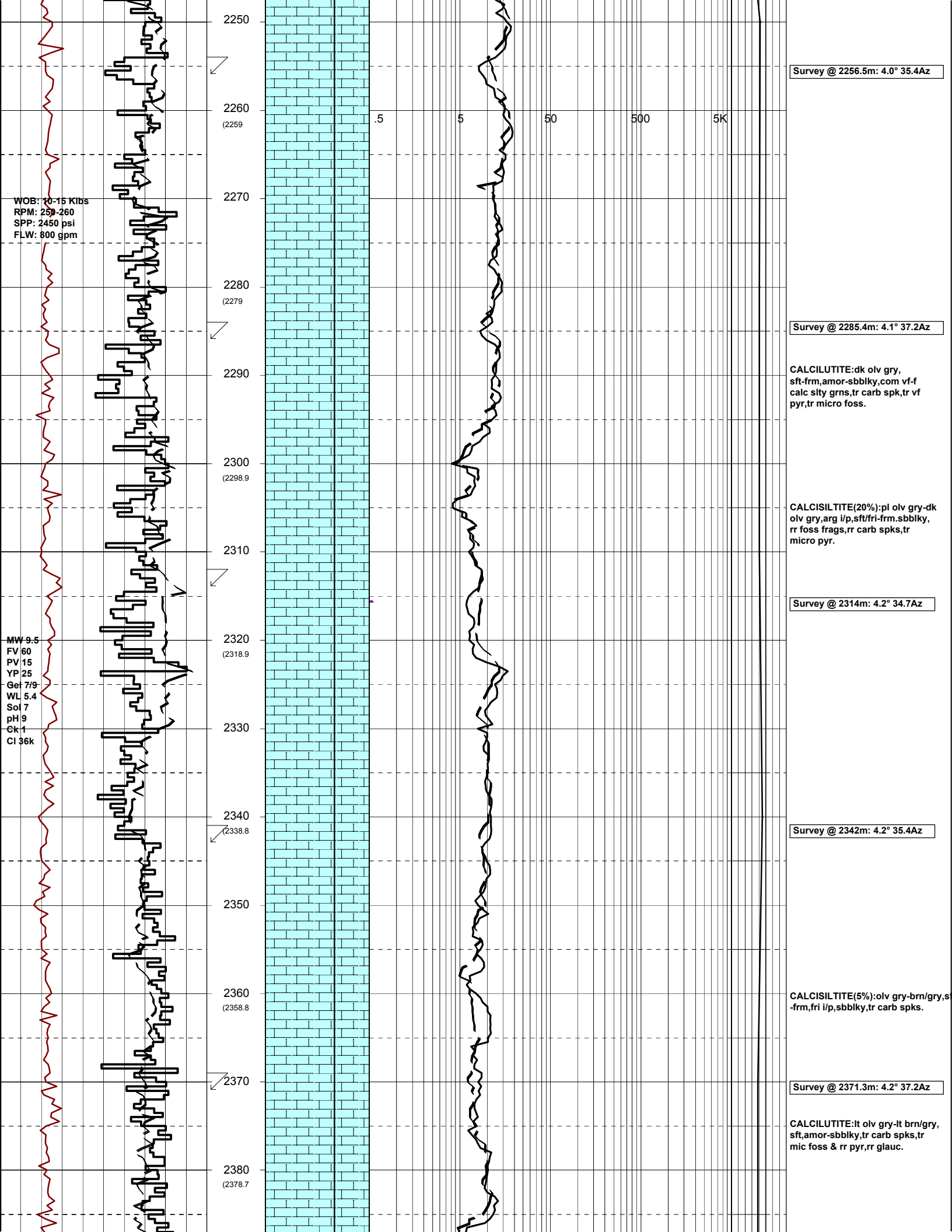
Survey @ 2085.1m: 3.33° 26.5Az

2090

2100  
(2099.4)

CALCILUTITE:pl gry-olv gry i/p,tr  
brn/gry,sft-vsft,rr frm,amor-  
sbblky,sbfiss i/p,tr carb spks,  
tr pyr.





WQB: 10-15 Klbs.  
RPM: 250-265  
SPP: 2800 psi  
FLW: 892 gpm

Survey @ 2399.9m: 4.3° 38.0Az

CALCILUTITE:pl gry,brn/gry,v sft  
pl gry grns,frm brn/gry grns,tr  
carb spks,tr mic foss,grad to  
calcisiltite i/p.

2390  
2400 (2398.7)  
2410  
2420 (-888.3)  
2430  
2440 (2438.6)  
2450  
2460 (2458.6)  
2470  
2480 (2478.5)  
2490  
2500 (2498.5)  
2510  
2520 (2518.4)

.5 5 50 500 5K

Survey @ 2428.5m: 4.30° 38.3Az

ARGILLACEOUS CALCILUTITE:pl  
gry,occ pl brn,sft-occ frm,  
sbbiky,carb spks i/p,rr mic  
foss,rr glauc.

Survey @ 2457.1m: 4.3° 37.4Az

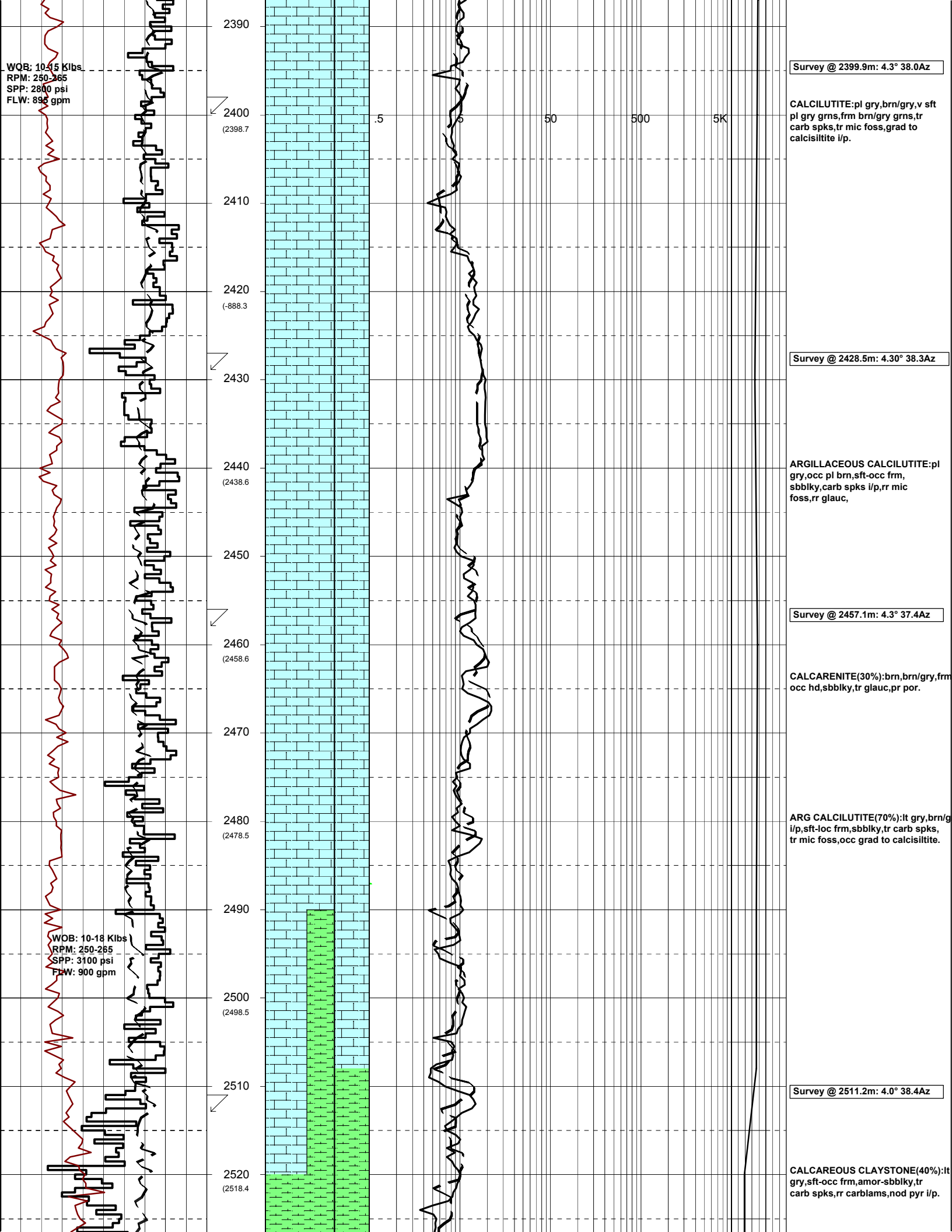
CALCARENITE(30%):brn,brn/gry,frm  
occ hd,sbbiky,tr glauc,pr por.

ARG CALCILUTITE(70%):lt gry,brn/g  
i/p,sft-loc frm,sbbiky,tr carb spks,  
tr mic foss,occ grad to calcisiltite.

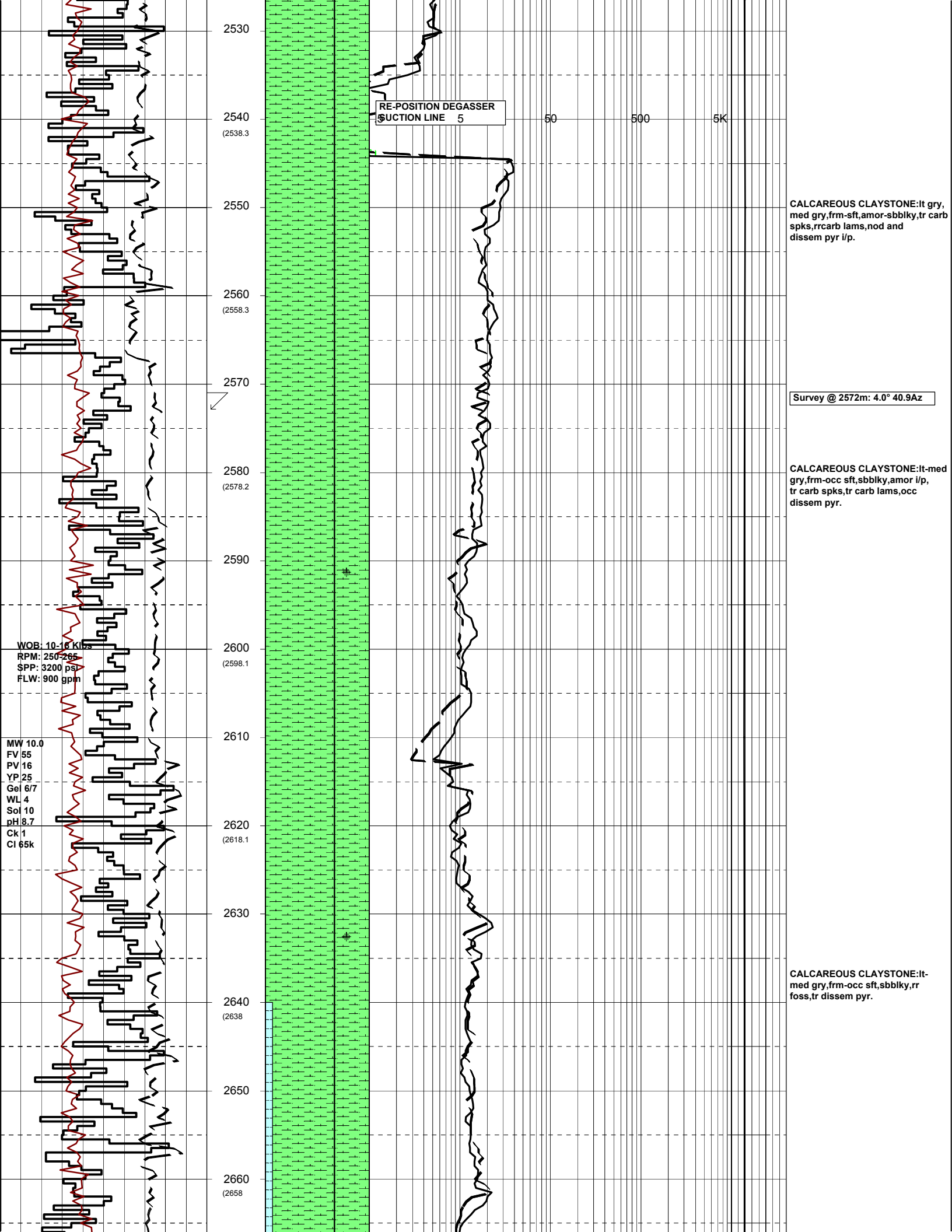
WOB: 10-18 Klbs  
RPM: 250-285  
SPP: 3100 psi  
FLW: 900 gpm

Survey @ 2511.2m: 4.0° 38.4Az

CALCAREOUS CLAYSTONE(40%):lt  
gry,sft-occ frm,amor-sbbiky,tr  
carb spks,rr carblams,nod pyr i/p.







2530  
 2540 (2538.3)  
 2550  
 2560 (2558.3)  
 2570  
 2580 (2578.2)  
 2590  
 2600 (2598.1)  
 2610  
 2620 (2618.1)  
 2630  
 2640 (2638)  
 2650  
 2660 (2658)

RE-POSITION DEGASSER  
 SUCTION LINE 5

50 500 5K

CALCAREOUS CLAYSTONE:lt gry, med gry,frm-sft,amor-sbbkly,tr carb spks,rrcarb lams,nod and dissem pyr i/p.

Survey @ 2572m: 4.0° 40.9Az

CALCAREOUS CLAYSTONE:lt-med gry,frm-occ sft,sbbkly,amor i/p, tr carb spks,tr carb lams,occ dissem pyr.

WOB: 10-16 Klbs  
 RPM: 250-265  
 SPP: 3200 psi  
 FLW: 900 gpm

MW 10.0  
 FV 55  
 PV 16  
 YP 25  
 Gel 6/7  
 WL 4  
 Sol 10  
 pH 8.7  
 Ck 1  
 CI 65k

CALCAREOUS CLAYSTONE:lt-med gry,frm-occ sft,sbbkly,rr foss,tr dissem pyr.

