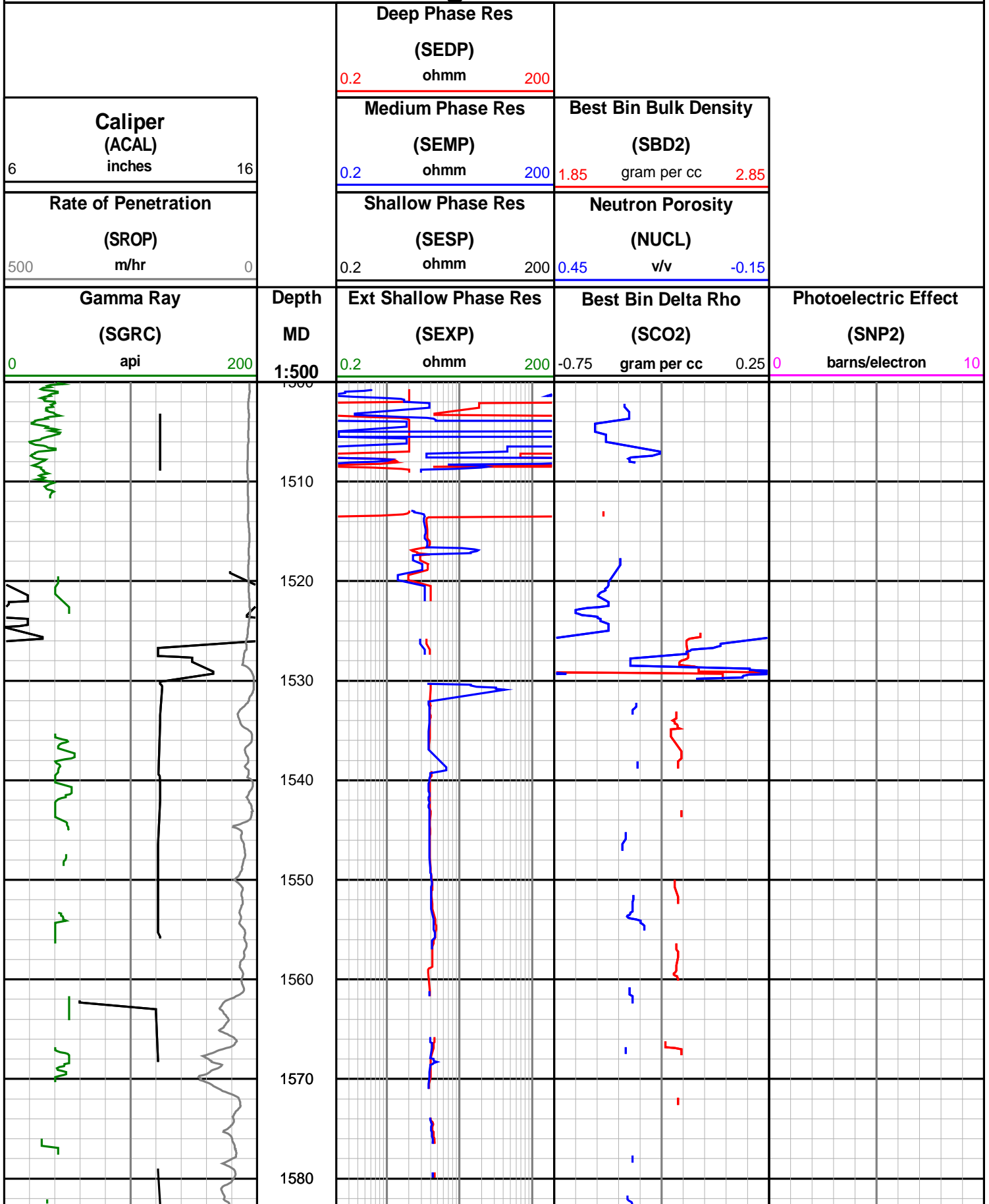
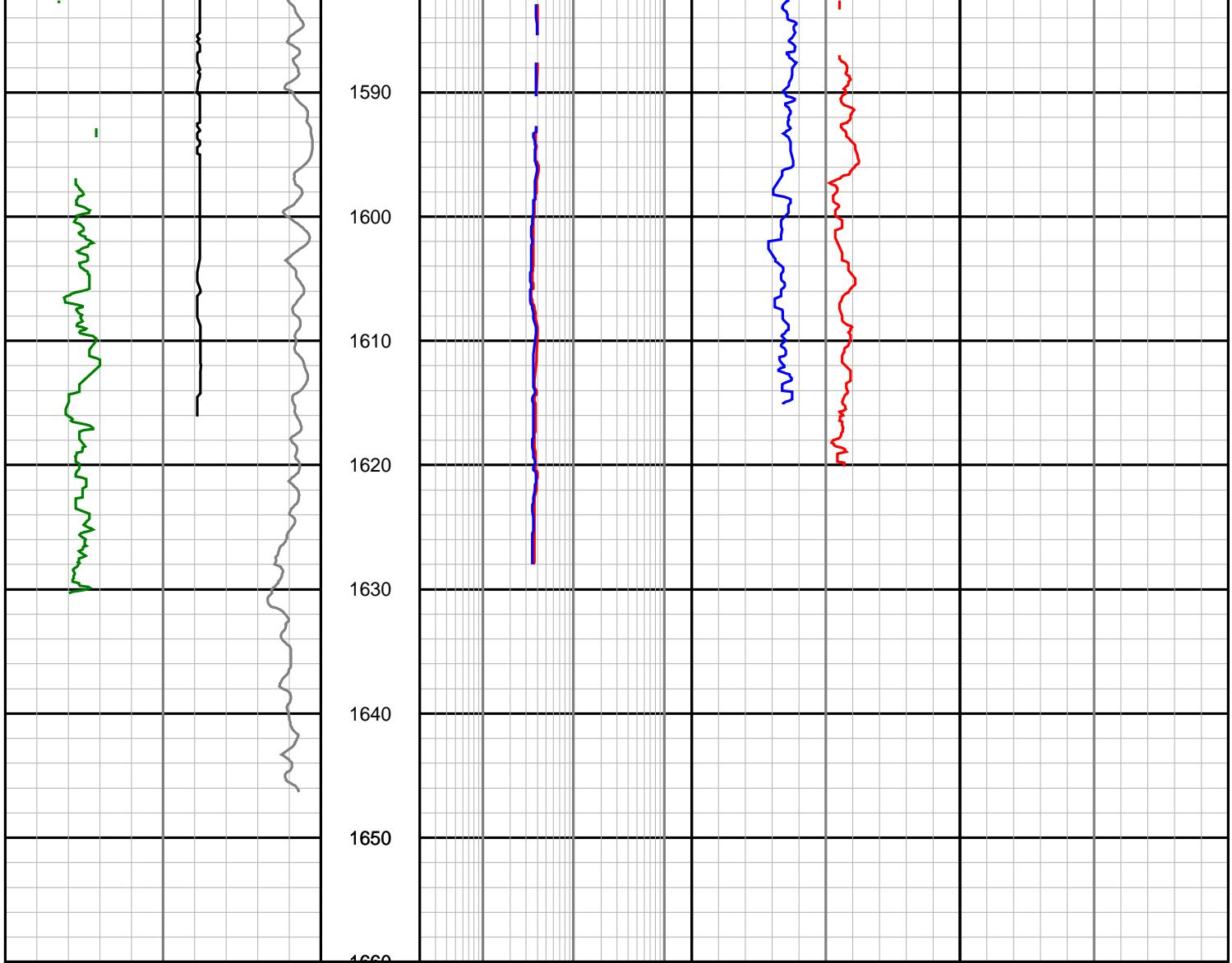


# Nexus Energy Ltd

## Culverin-1

### Realtime LWD Log - 12¼" Hole Section





<p><b>Gamma Ray</b> (SGRC) api 0 200</p>	<p><b>Depth</b> MD 1:500</p>	<p><b>Ext Shallow Phase Res</b> (SEXP) ohmm 0.2 200</p>	<p><b>Best Bin Delta Rho</b> (SCO2) gram per cc -0.75 0.25</p>	<p><b>Photoelectric Effect</b> (SNP2) barns/electron 0 10</p>
<p><b>Rate of Penetration</b> (SROP) m/hr 500 0</p>		<p><b>Shallow Phase Res</b> (SESP) ohmm 0.2 200</p>	<p><b>Neutron Porosity</b> (NUCL) v/v 0.45 -0.15</p>	
<p><b>Caliper</b> (ACAL) inches 6 16</p>		<p><b>Medium Phase Res</b> (SEMP) ohmm 0.2 200</p>	<p><b>Best Bin Bulk Density</b> (SBD2) gram per cc 1.85 2.85</p>	
		<p><b>Deep Phase Res</b> (SEDP) ohmm 0.2 200</p>		