



DRILLING LOG



FROM : (m) 600

TO : (m) 1525

SCALE : 1/ 500

Well Name : CULVERIN-1

Company : Nexus Energy

Country : AUSTRALIA

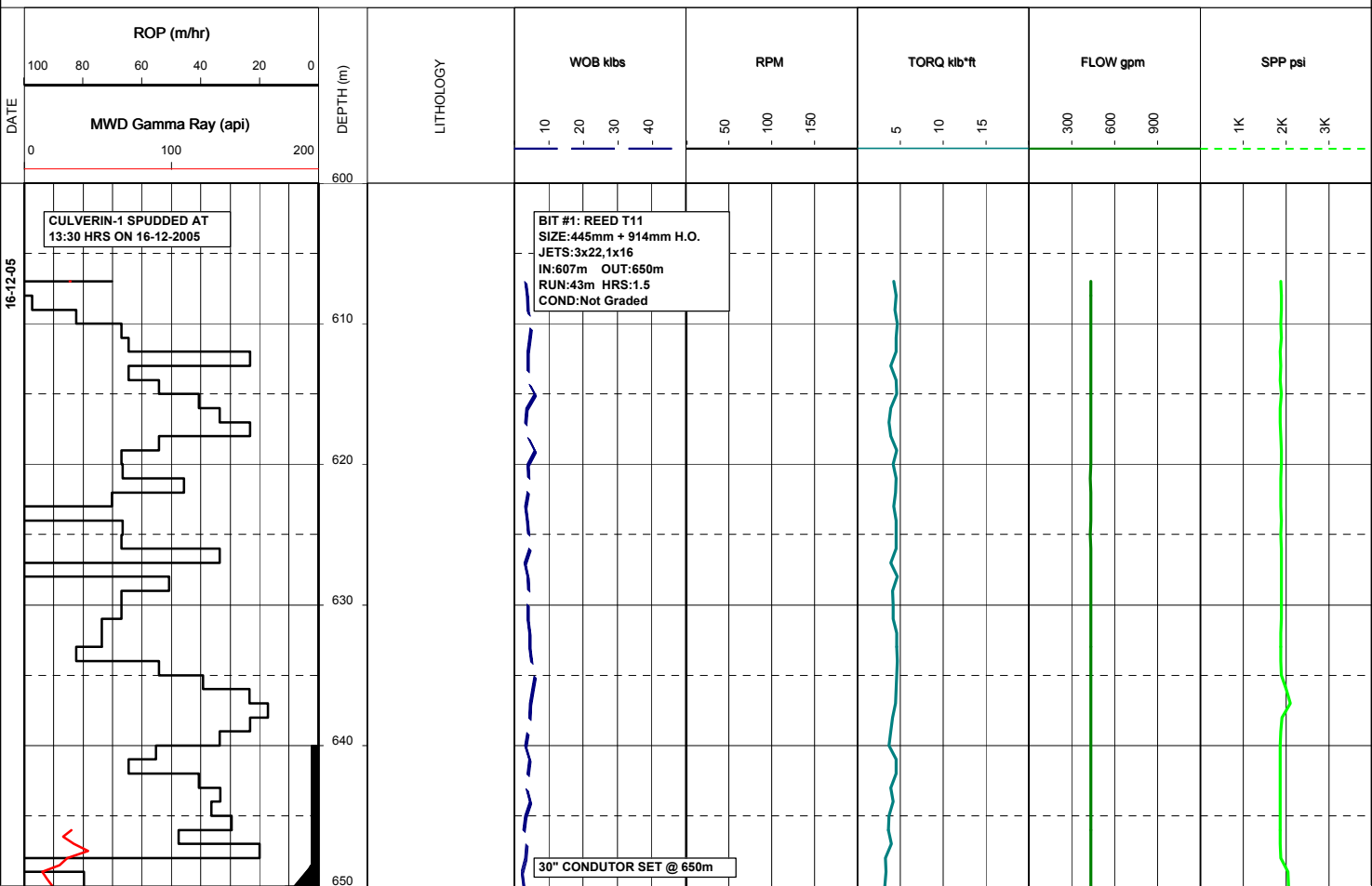
RT-MSL (m): 22

Final TD (mMDRT): m

RT-SEABED (m): 607

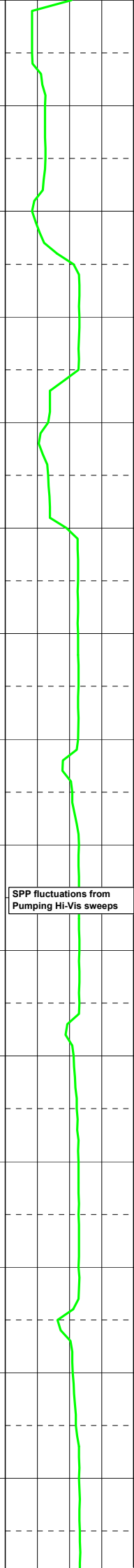
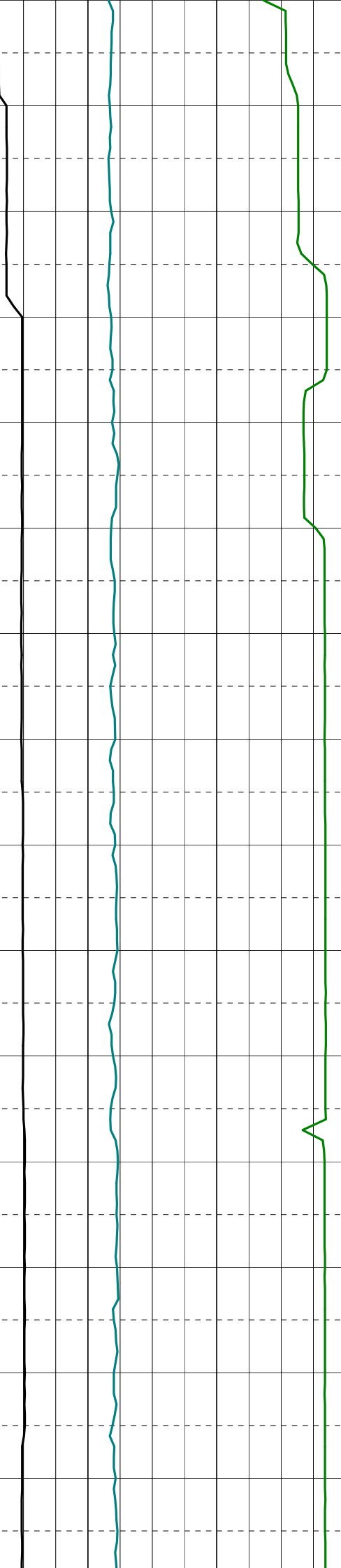
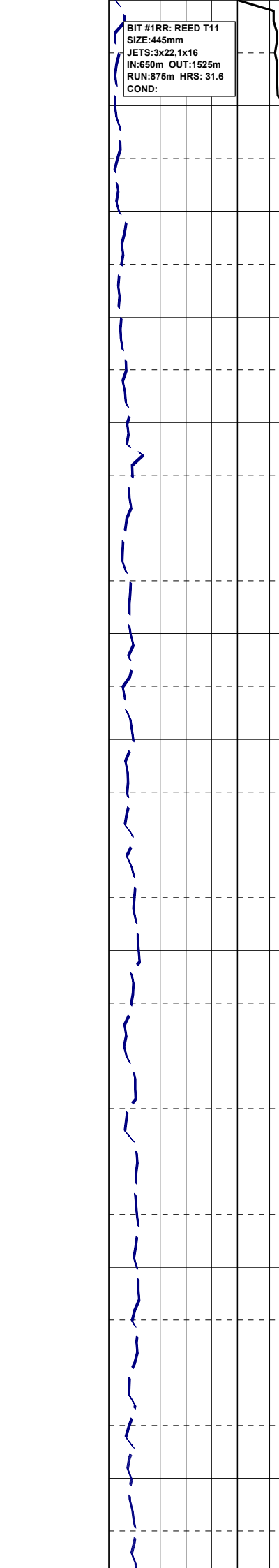
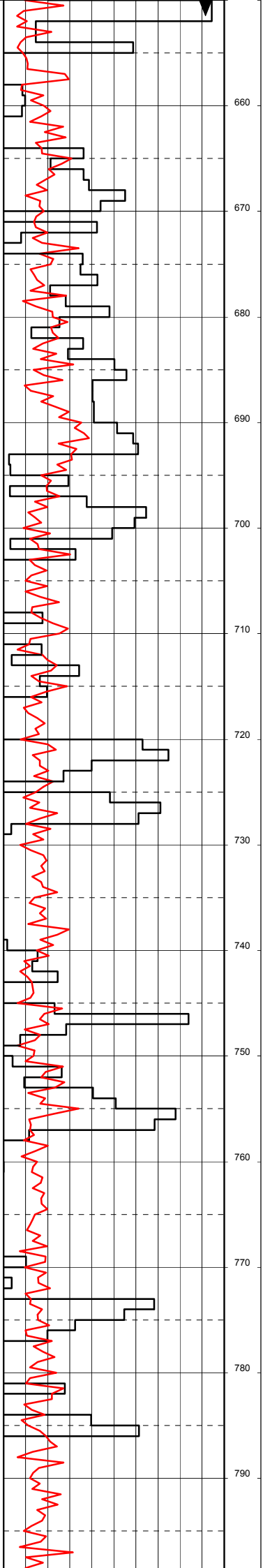
Final TVD (m TVDSS): m

Generated by ALS Package

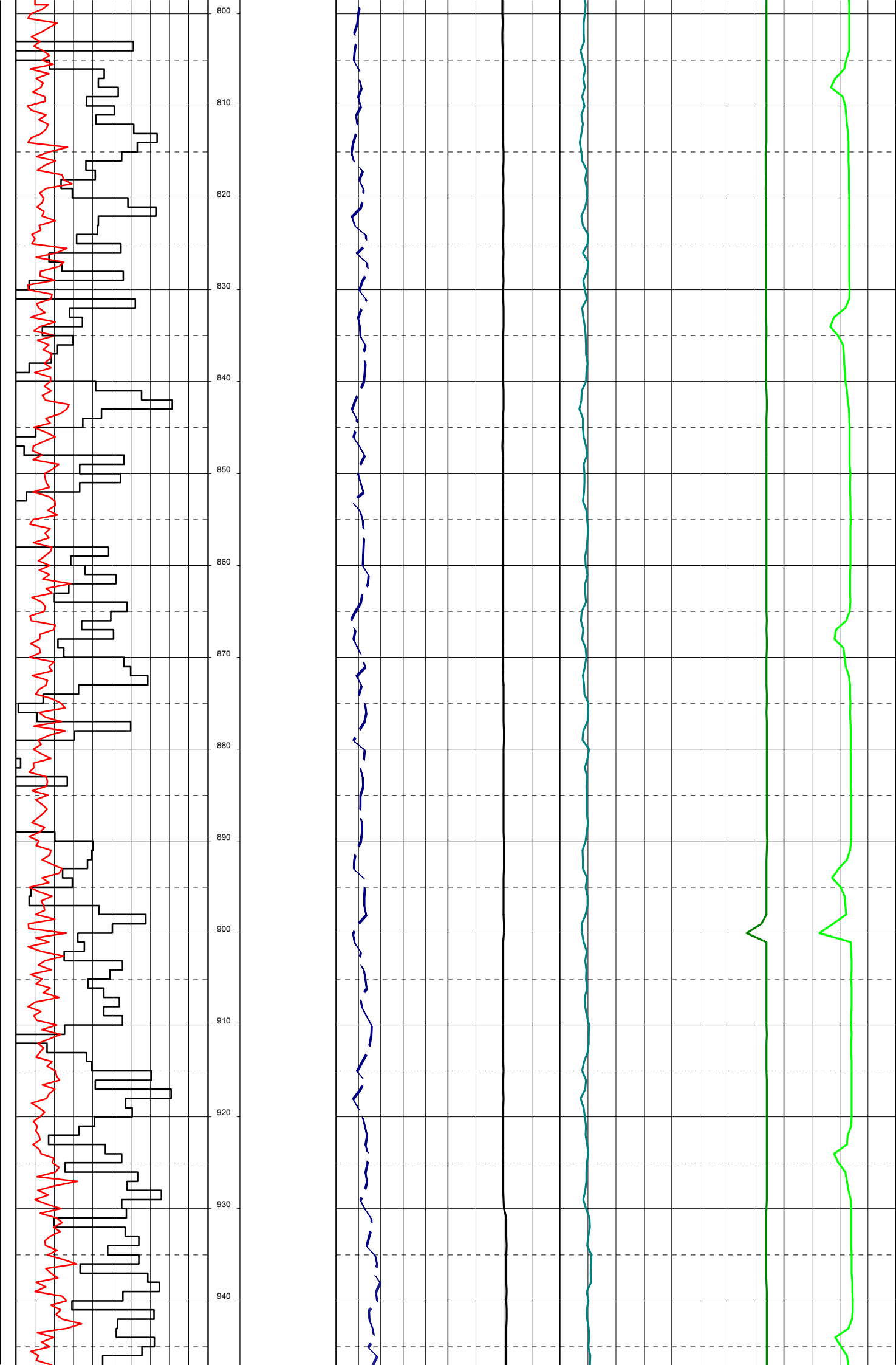


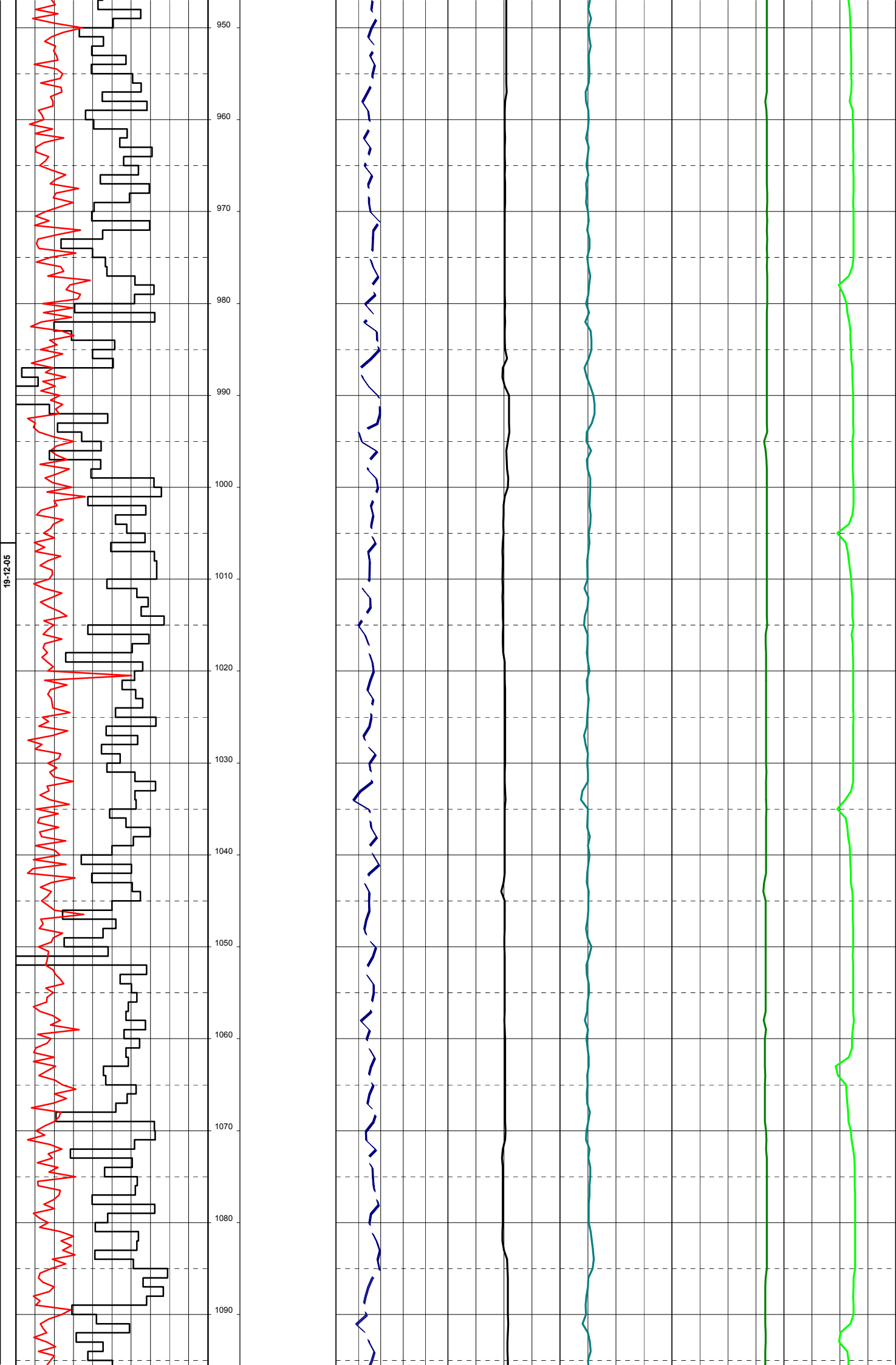
18-12-05

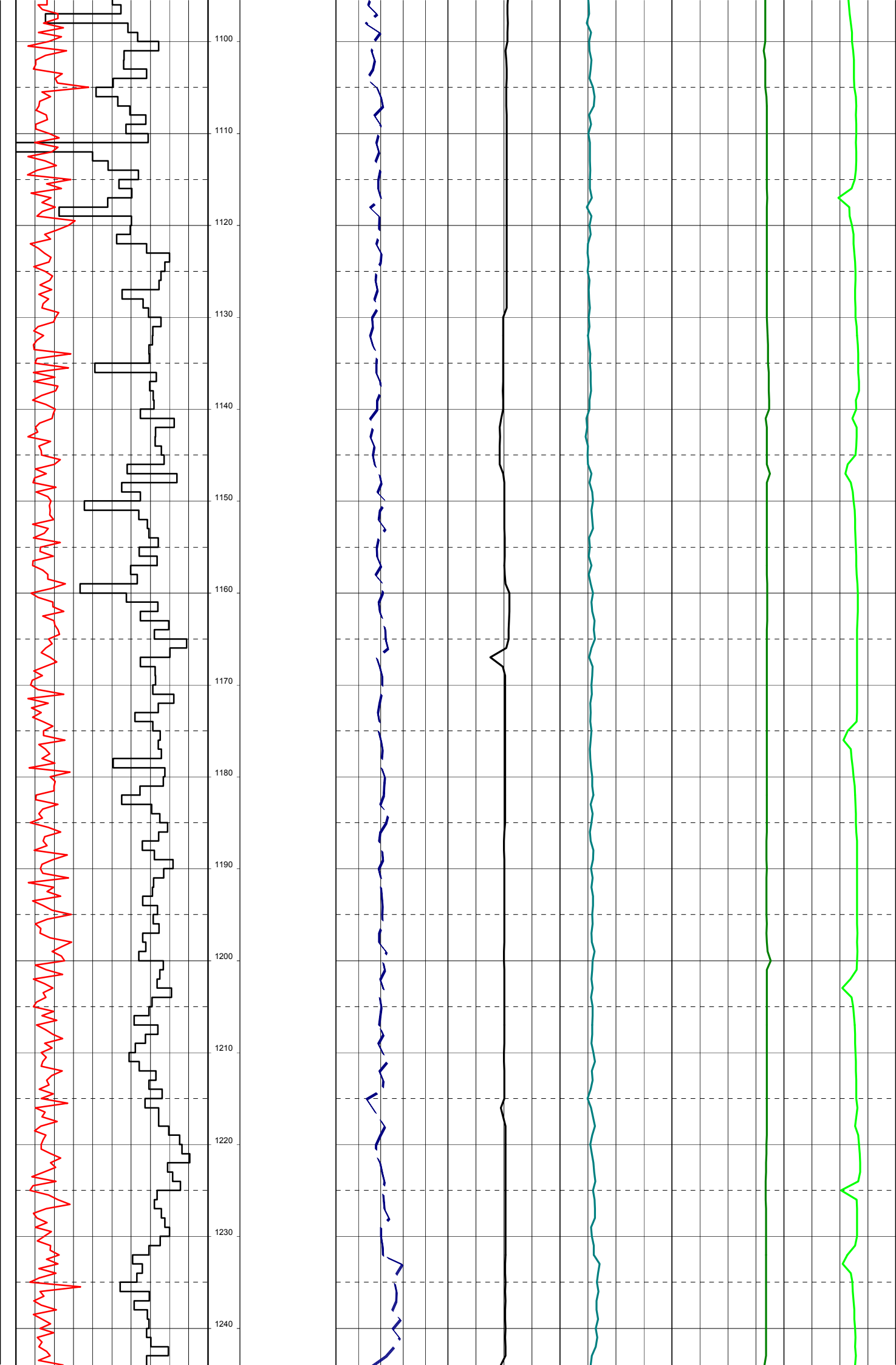
BIT #1RR: REED T11
SIZE: 445mm
JETS: 3x22, 1x16
IN: 650m OUT: 1525m
RUN: 875m HRS: 31.6
COND:

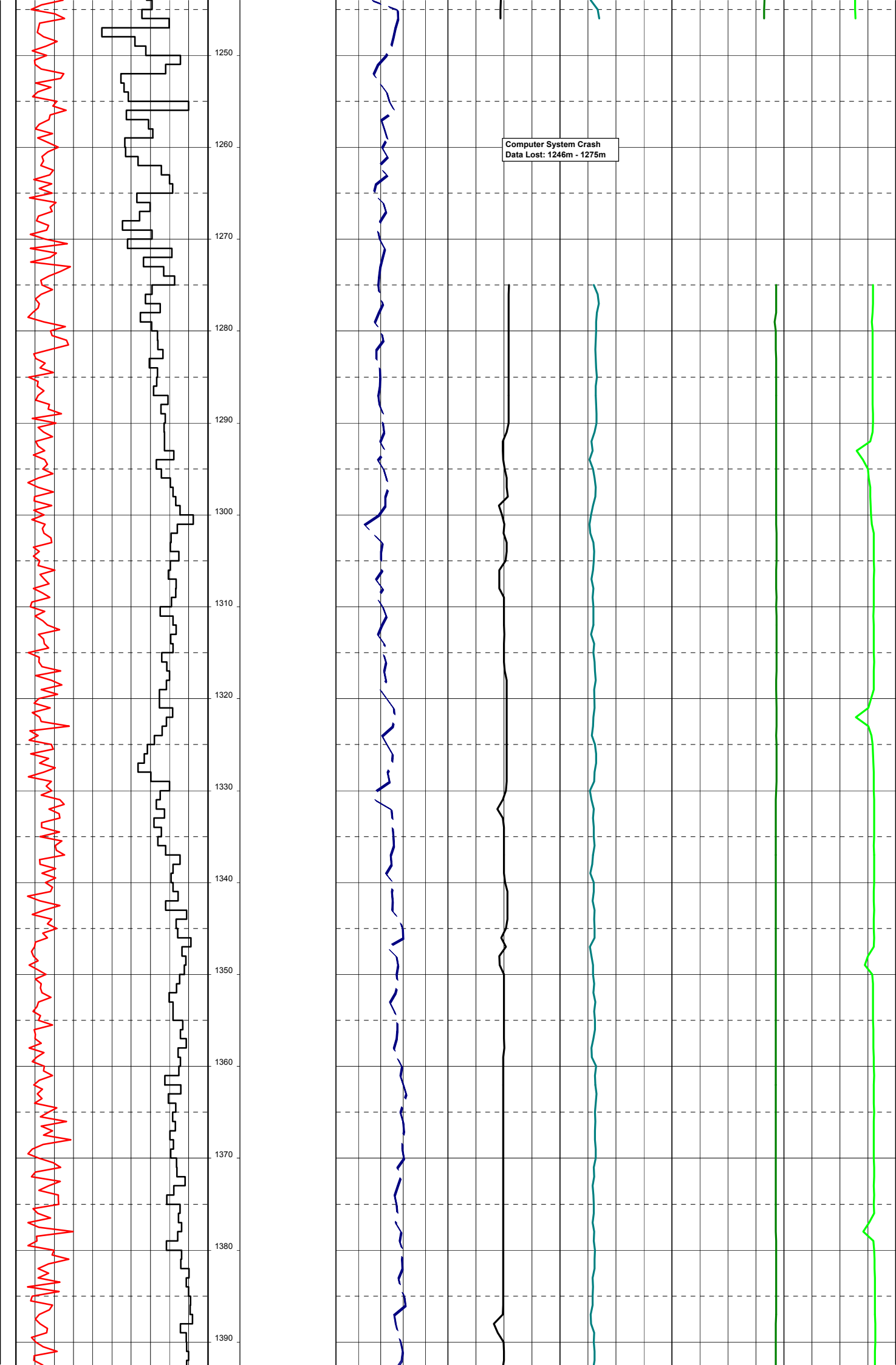


SPP fluctuations from Pumping Hi-Vis sweeps





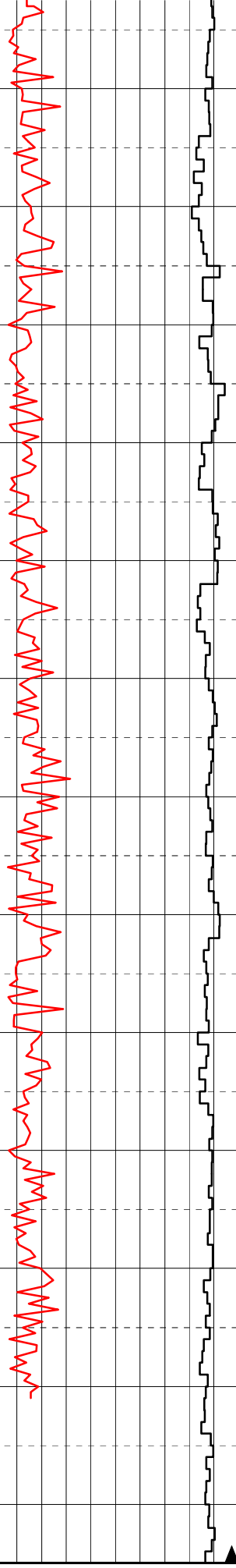




Computer System Crash
Data Lost: 1246m - 1275m

20-12-05

1400
1410
1420
1430
1440
1450
1460
1470
1480
1490
1500
1510
1520



BIT #
SIZE:311mm
IFTS

