



DRILLING LOG



FROM :(m) 2700

TO :(m) 3770

SCALE : 1/ 500

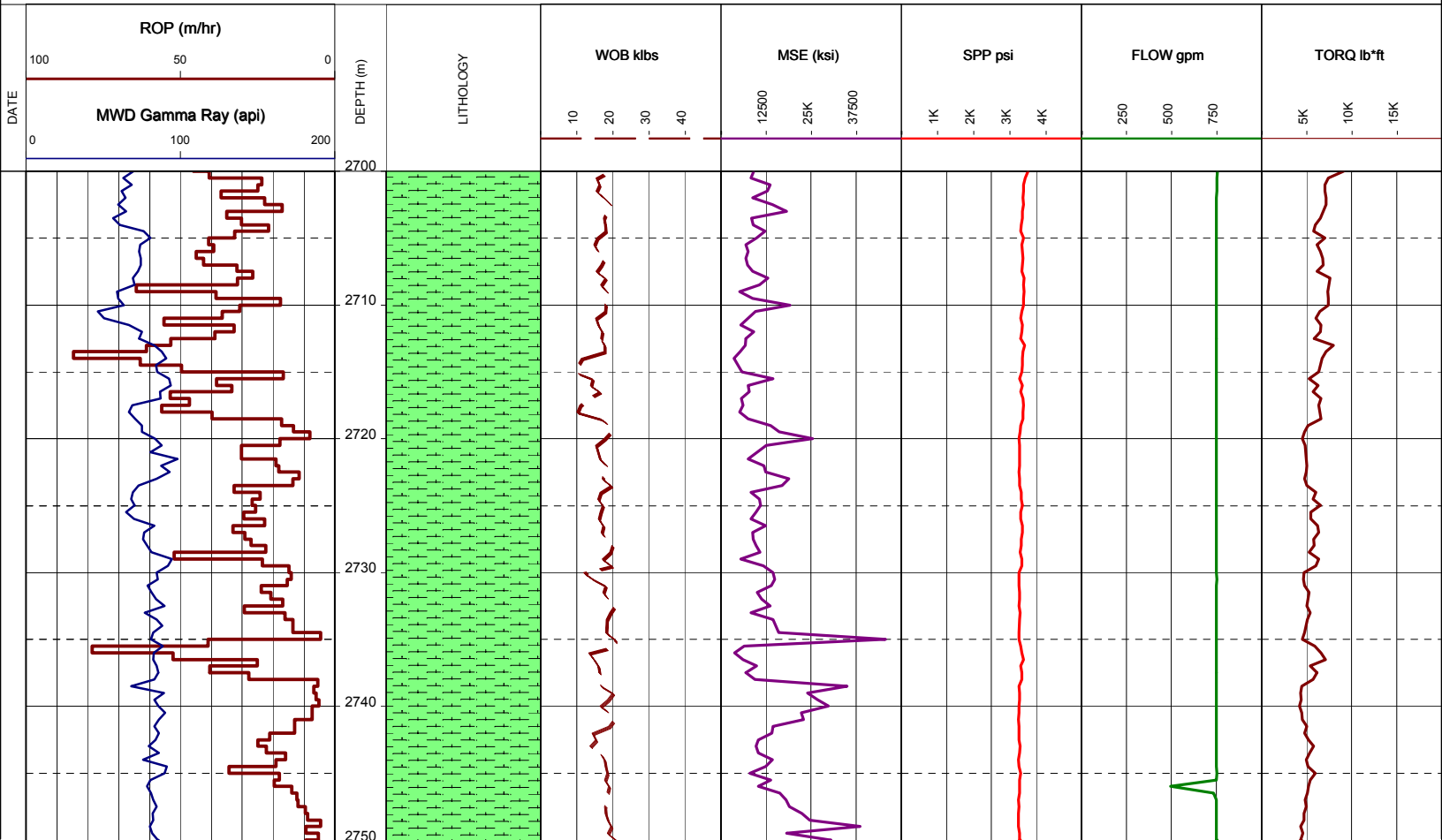
Well Name : CULVERIN-1
Company : NEXUS ENERGY

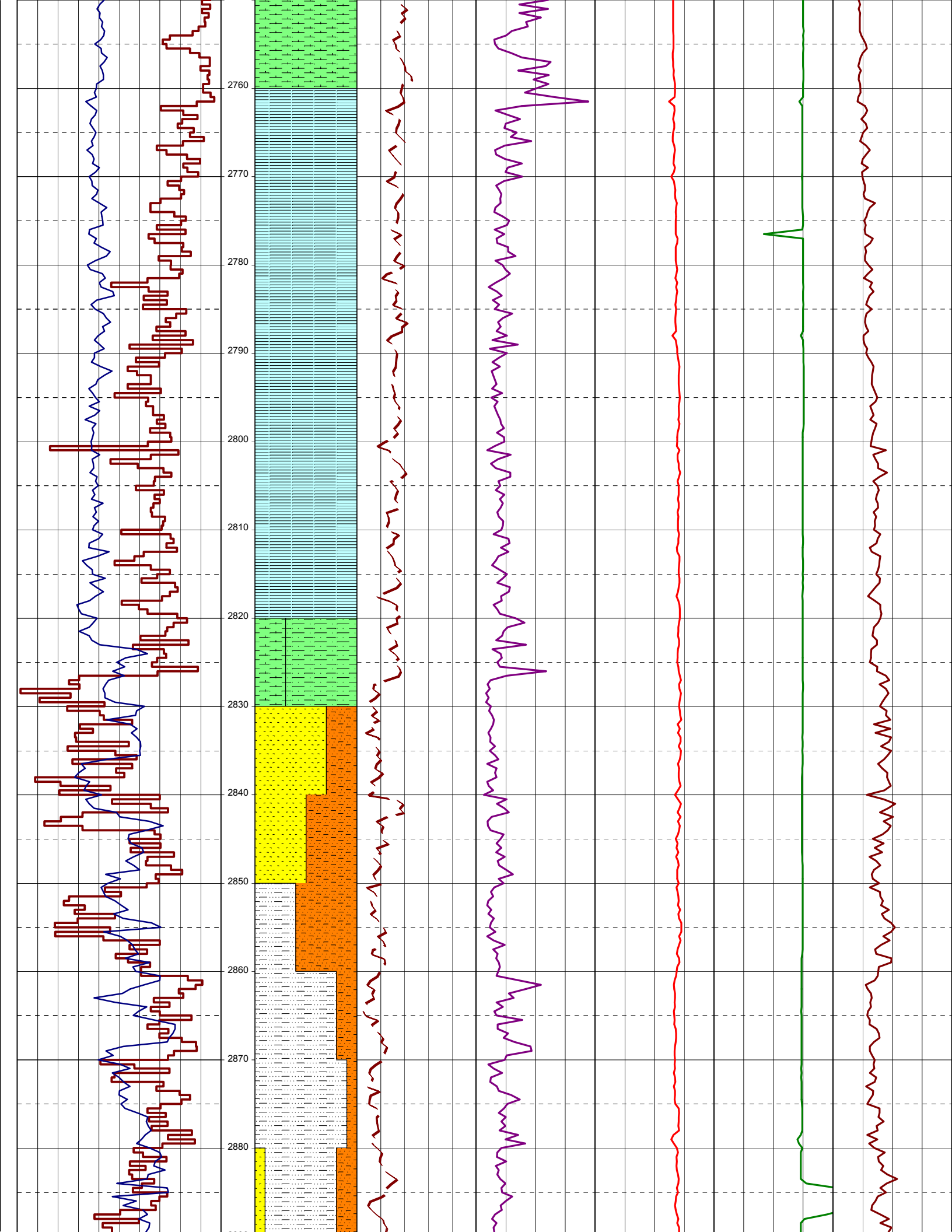
Country : AUSTRALIA

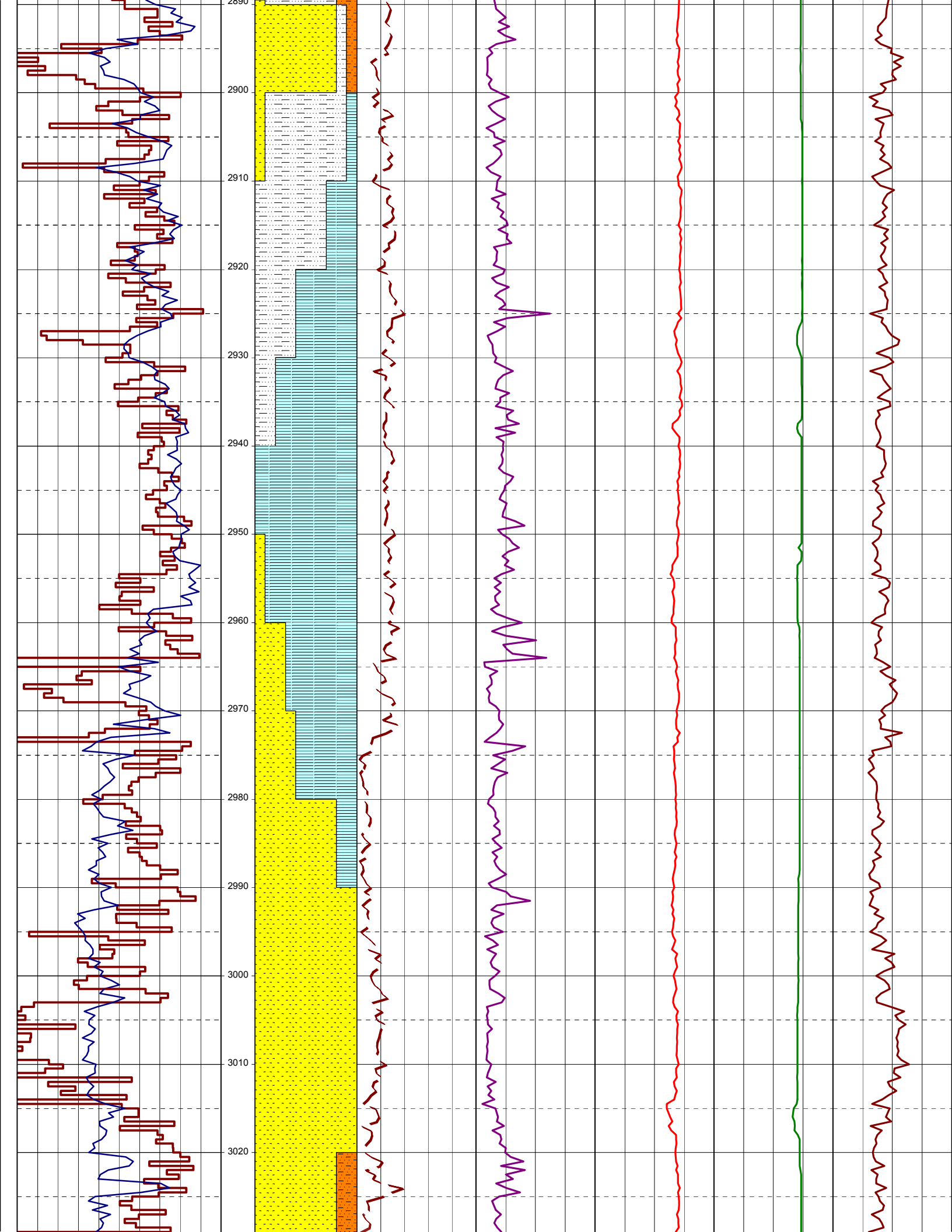
RT-MSL (m) : 22
RT-SEABED (m) : 607

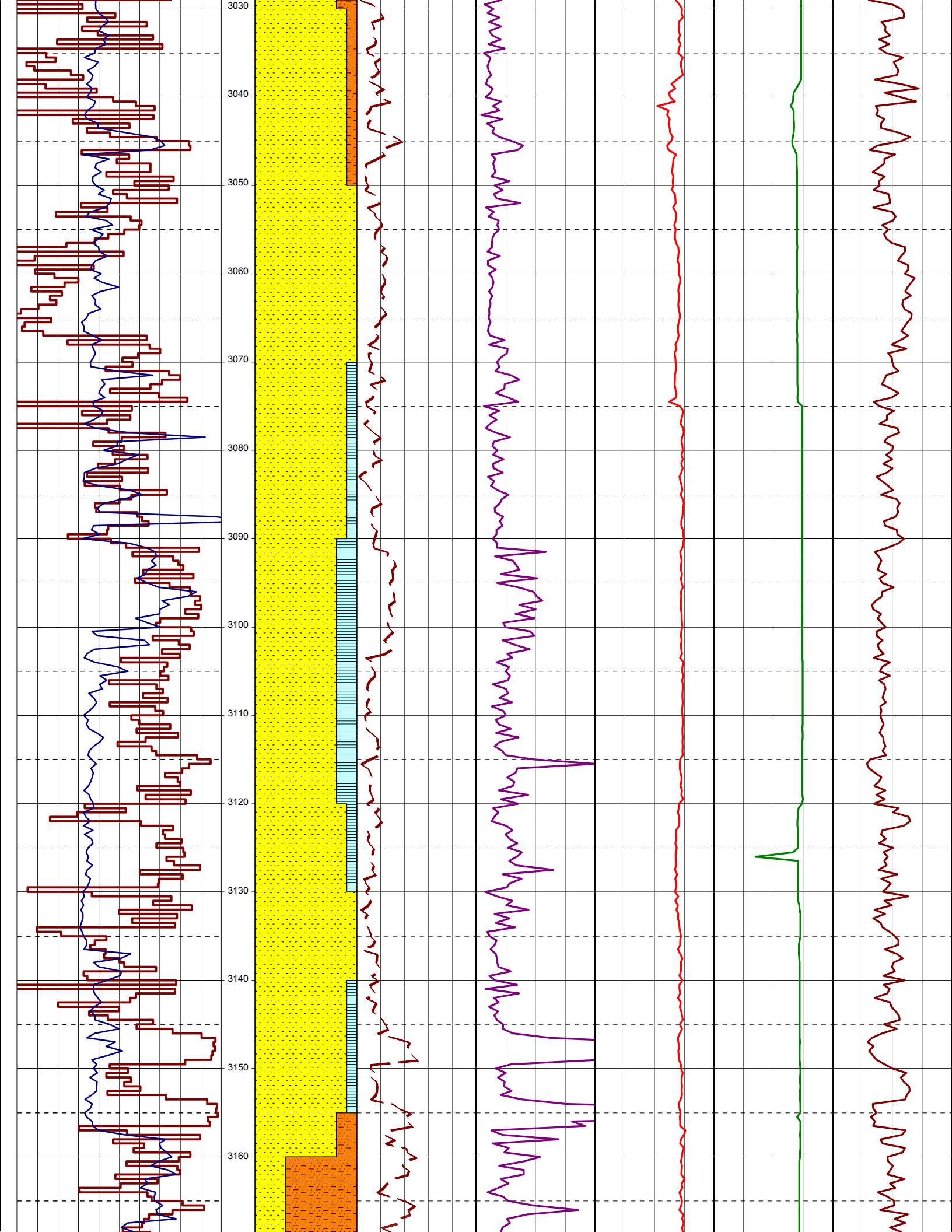
Final TD (mMDRT): m
Final TVD (m TVDSS): m

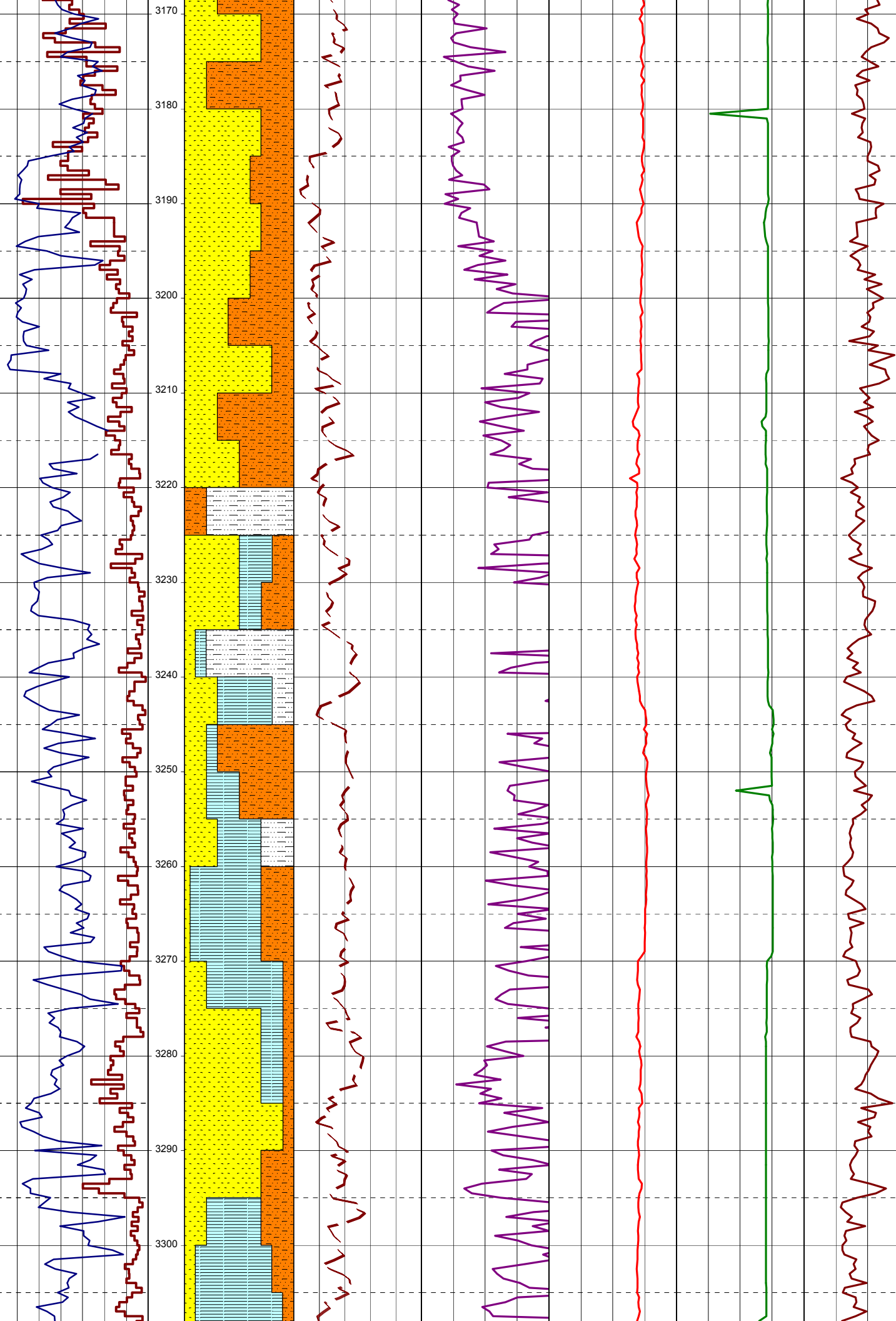
Generated by ALS Package

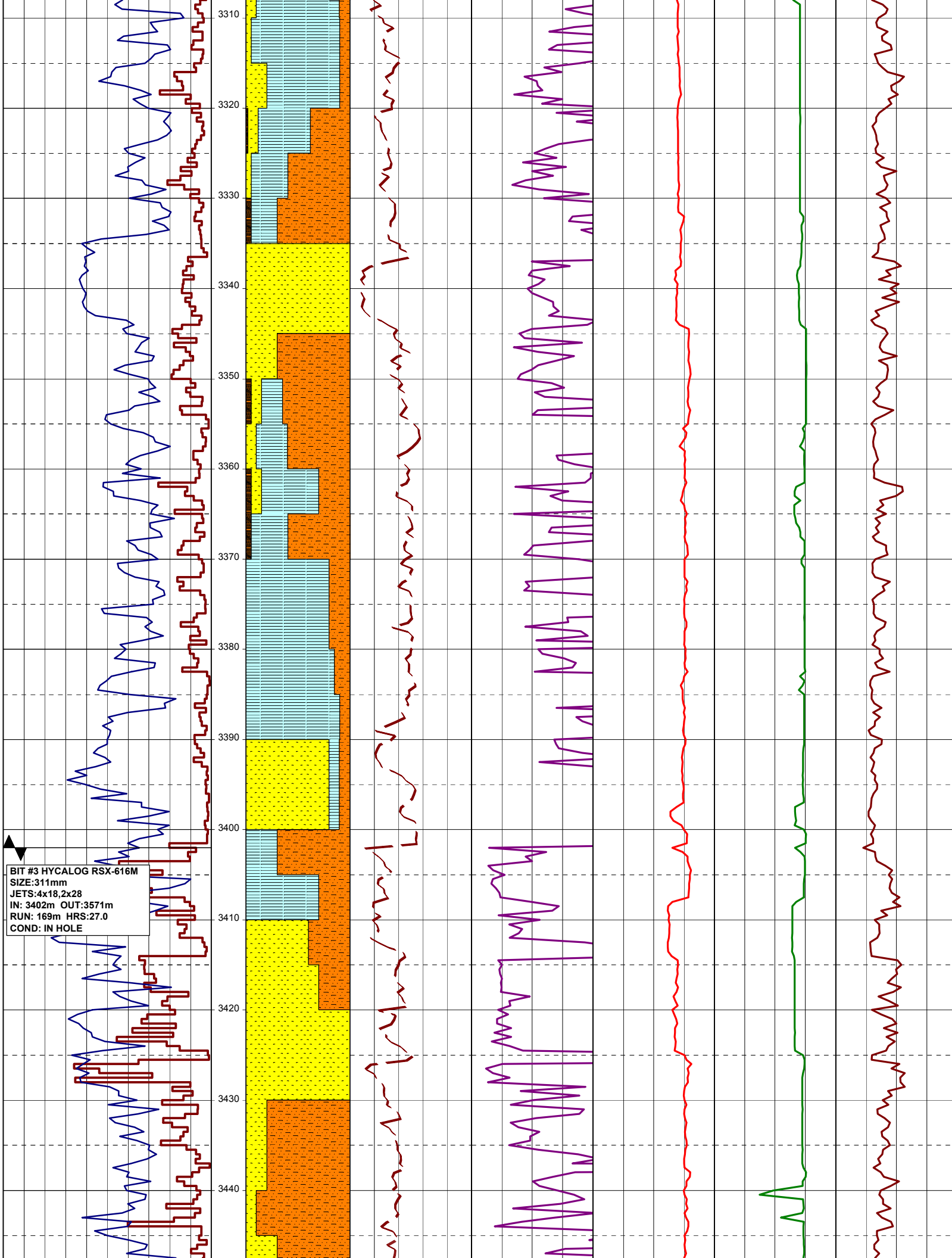








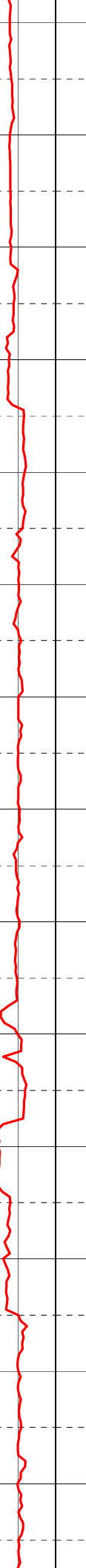
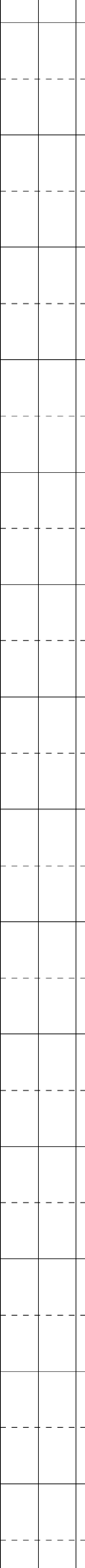
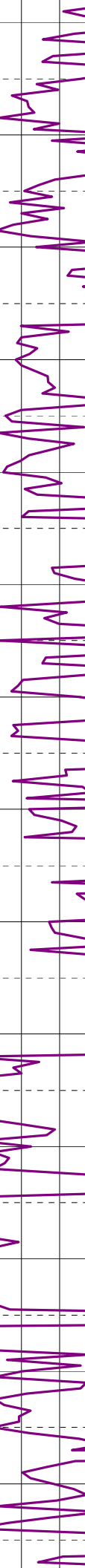
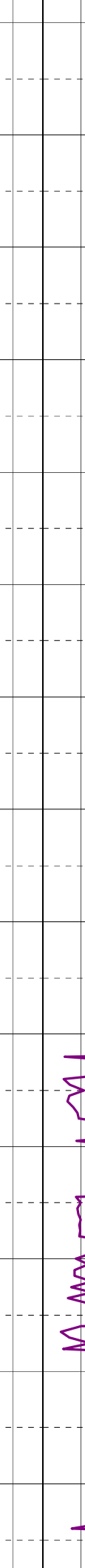
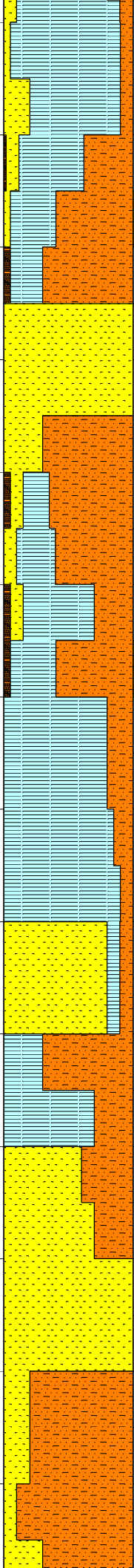


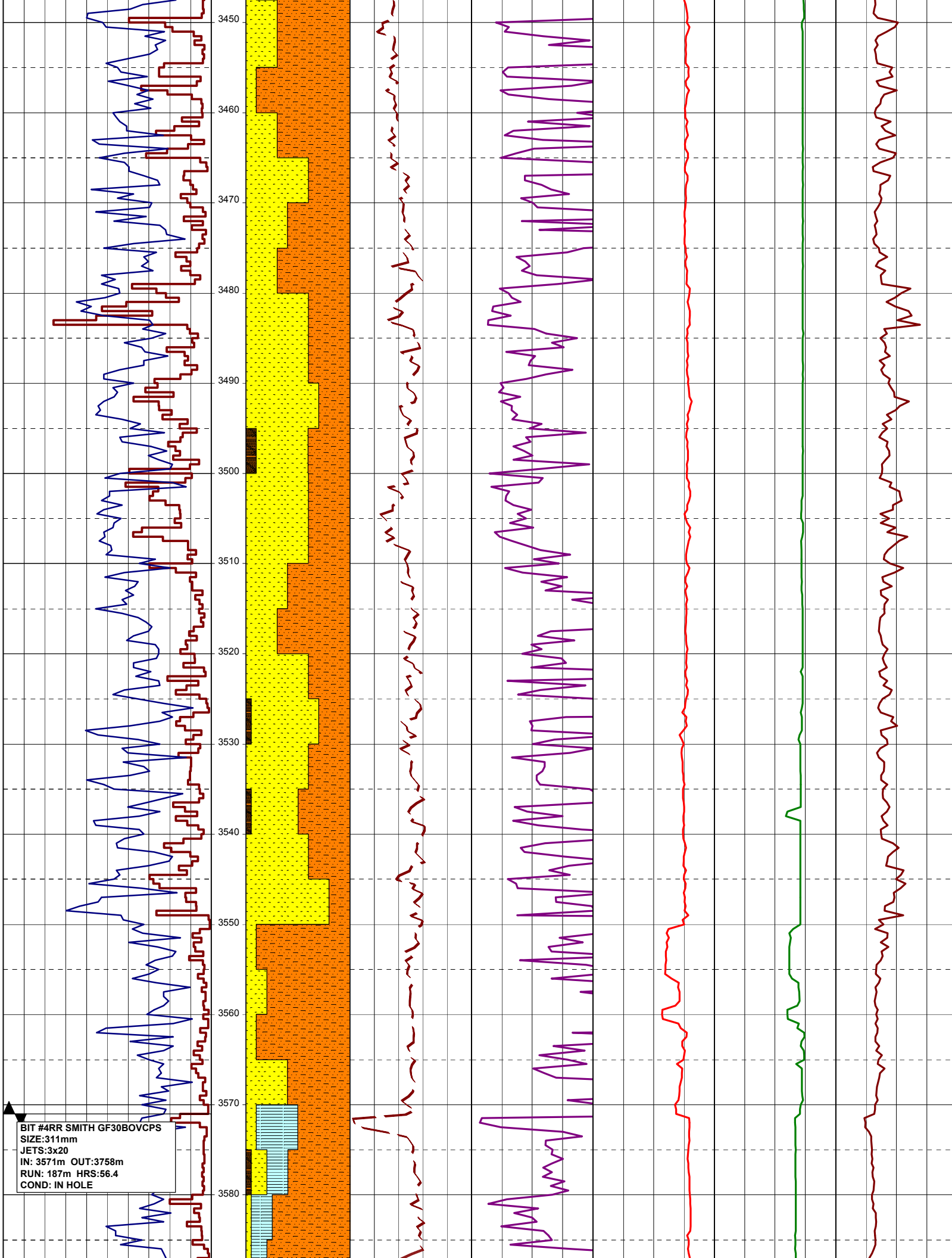


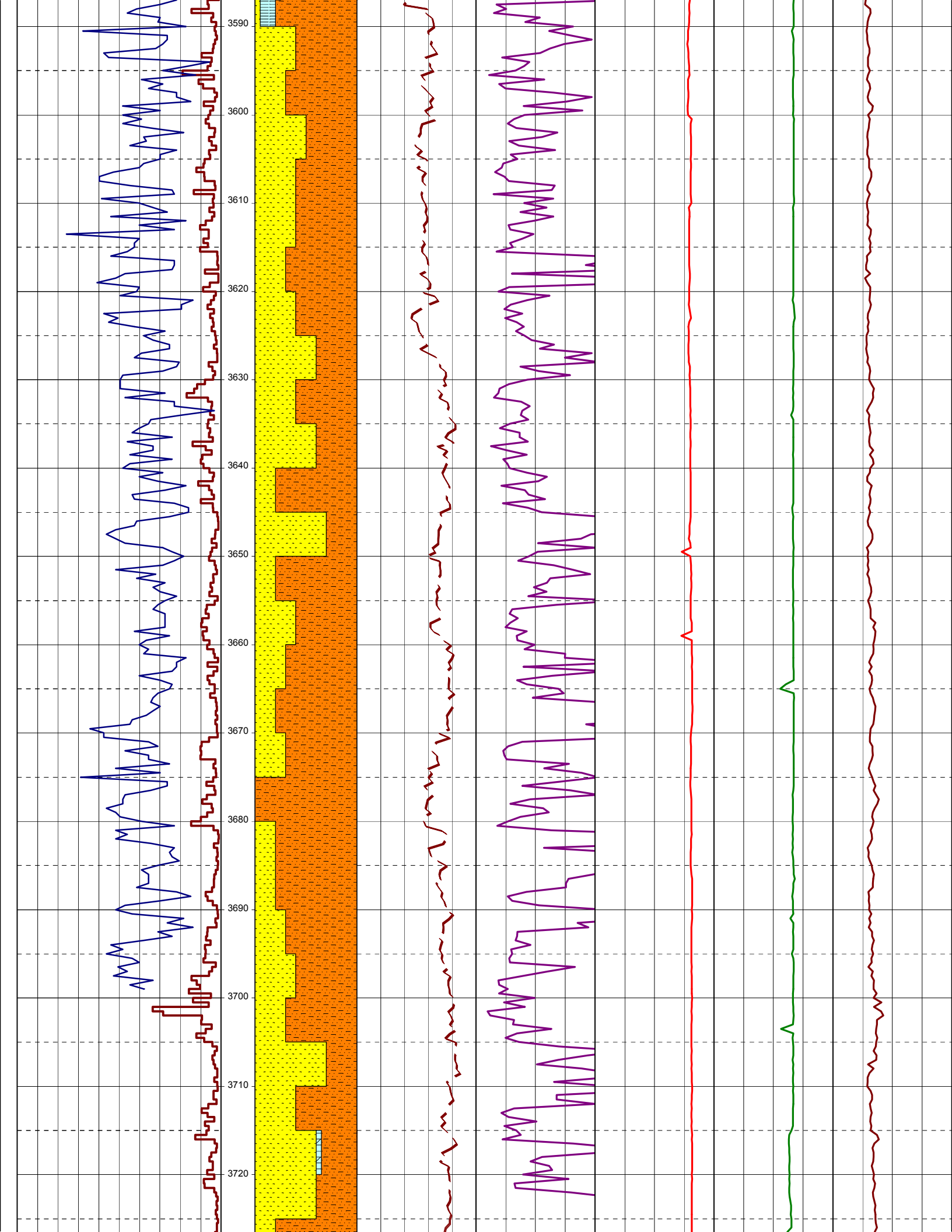
BIT #3 HYCALOG RSX-616M
SIZE:311mm
JETS:4x18,2x28
IN: 3402m OUT:3571m
RUN: 169m HRS:27.0
COND: IN HOLE

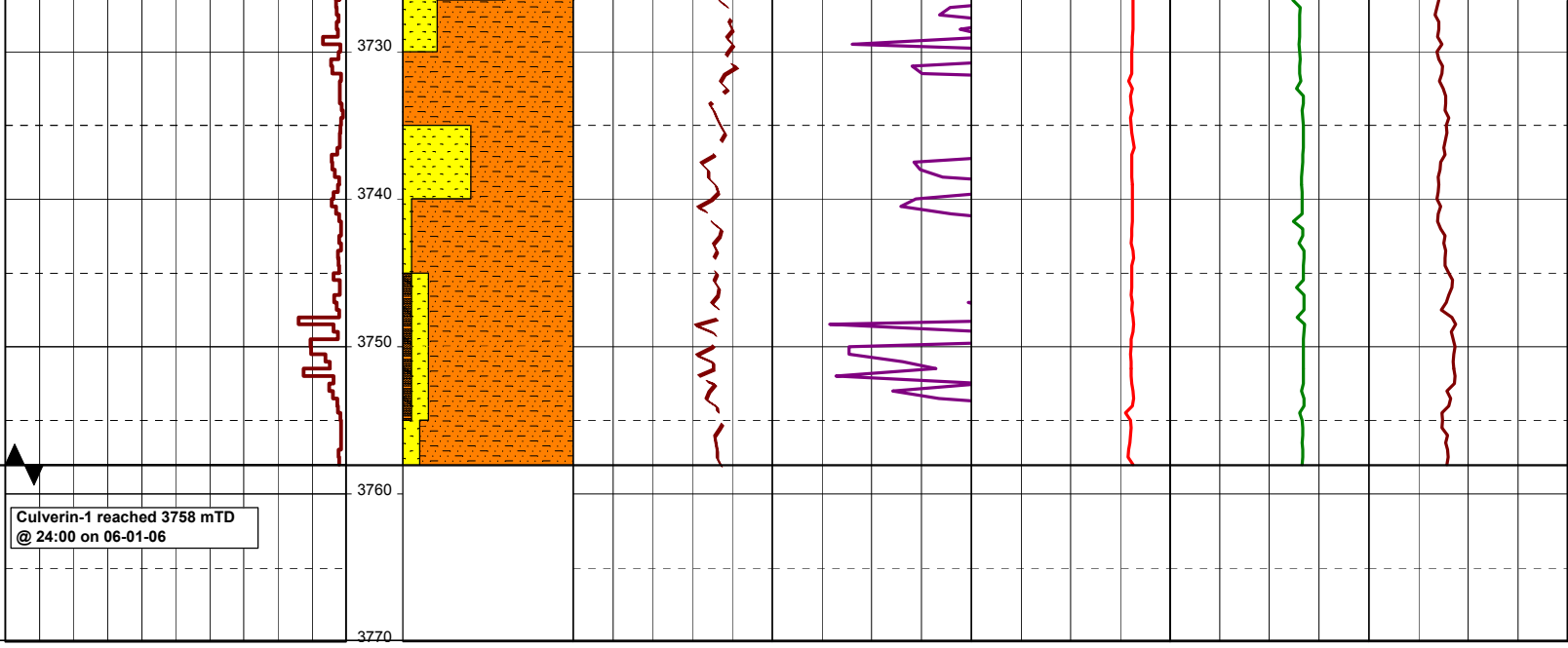


3310
3320
3330
3340
3350
3360
3370
3380
3390
3400
3410
3420
3430
3440









Culverin-1 reached 3758 mTD
@ 24:00 on 06-01-06

