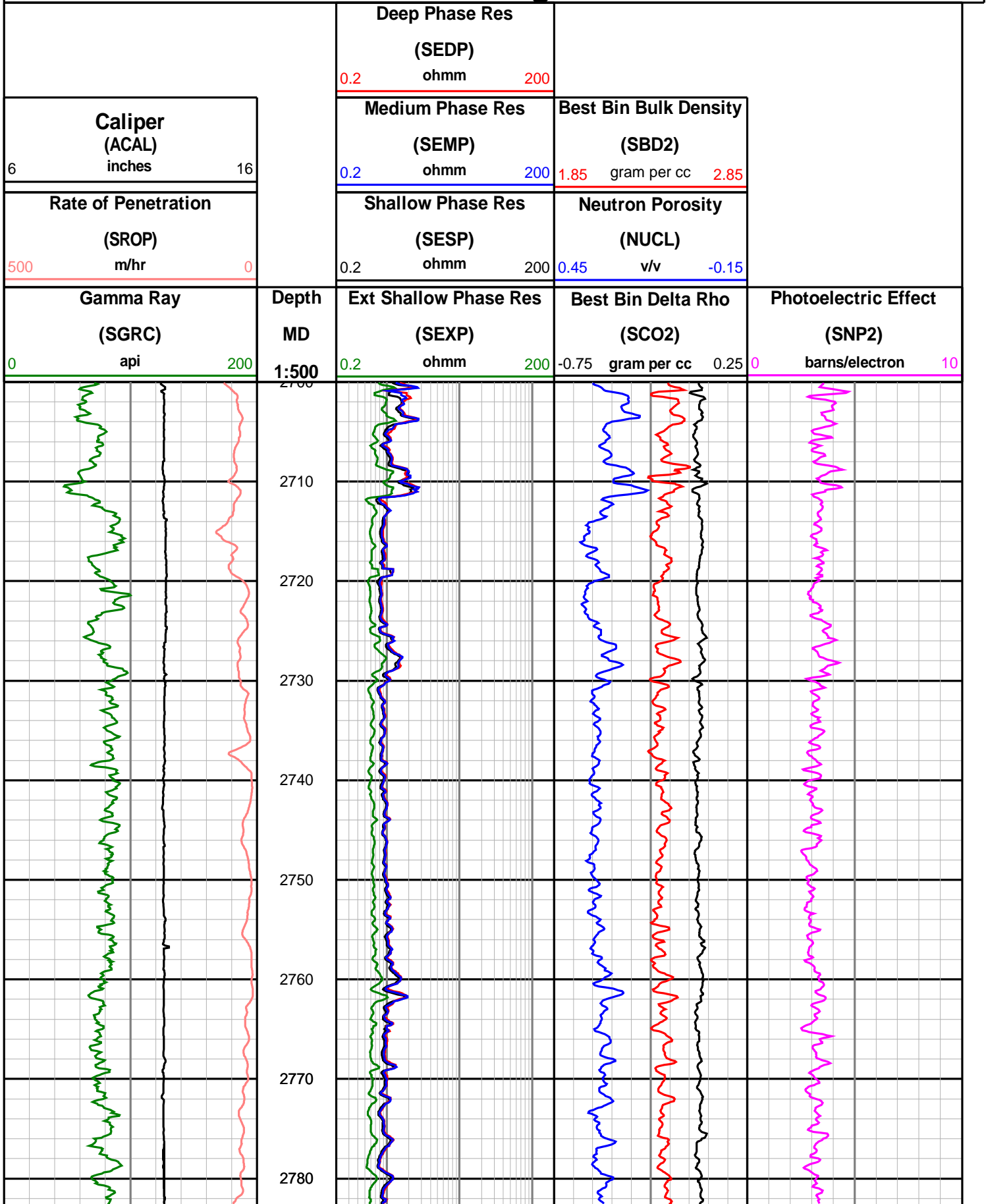
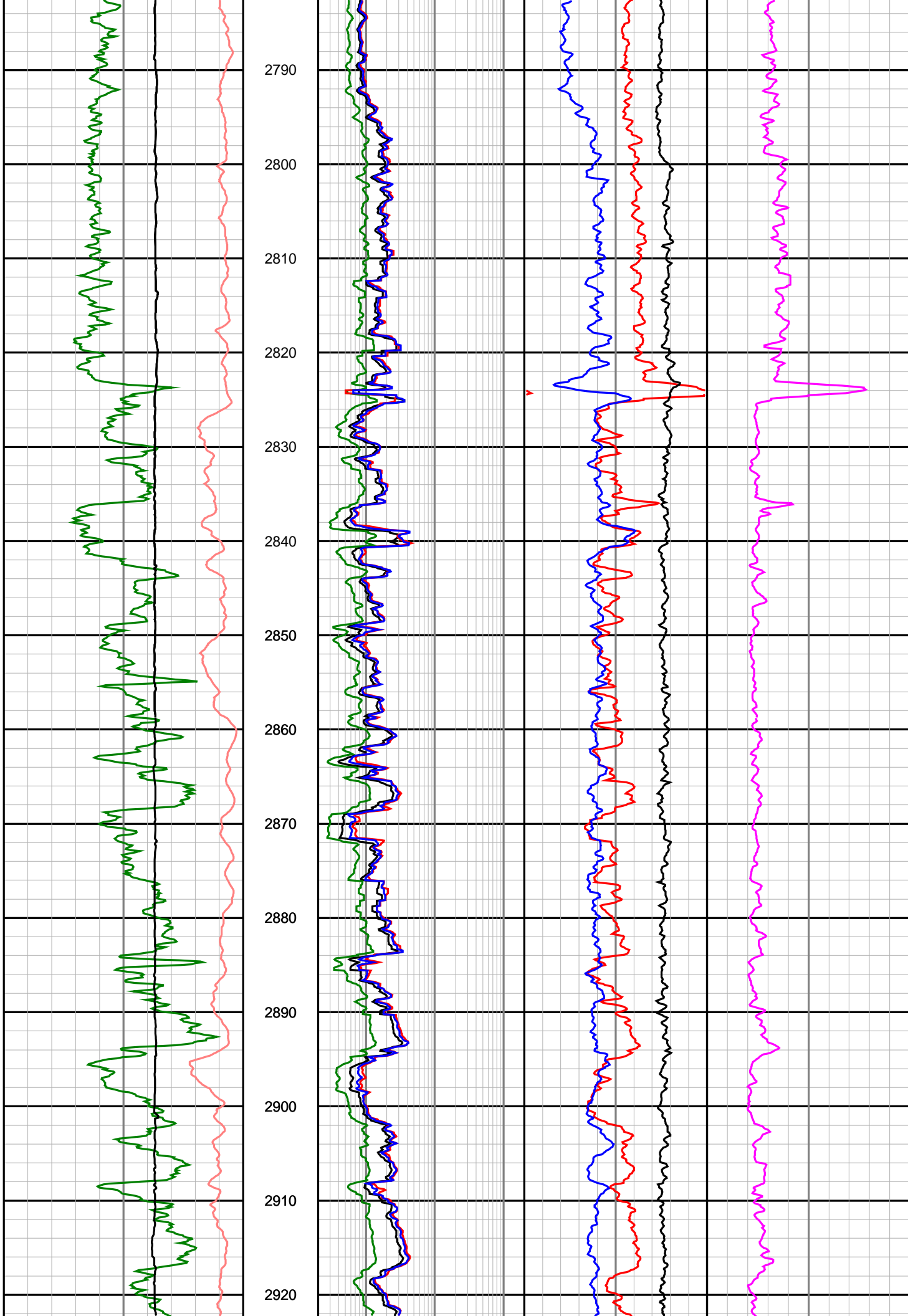


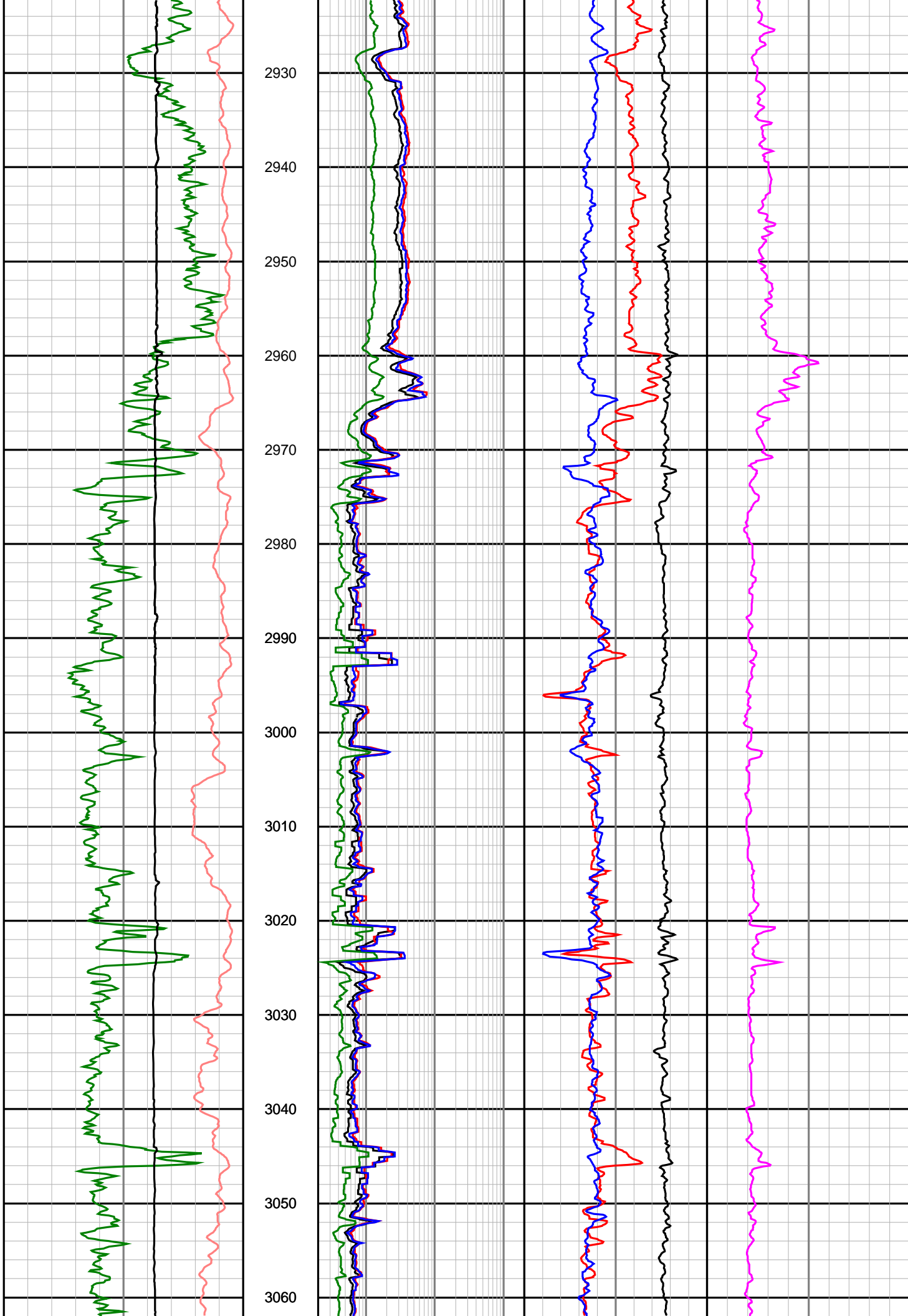
Nexus Energy Ltd

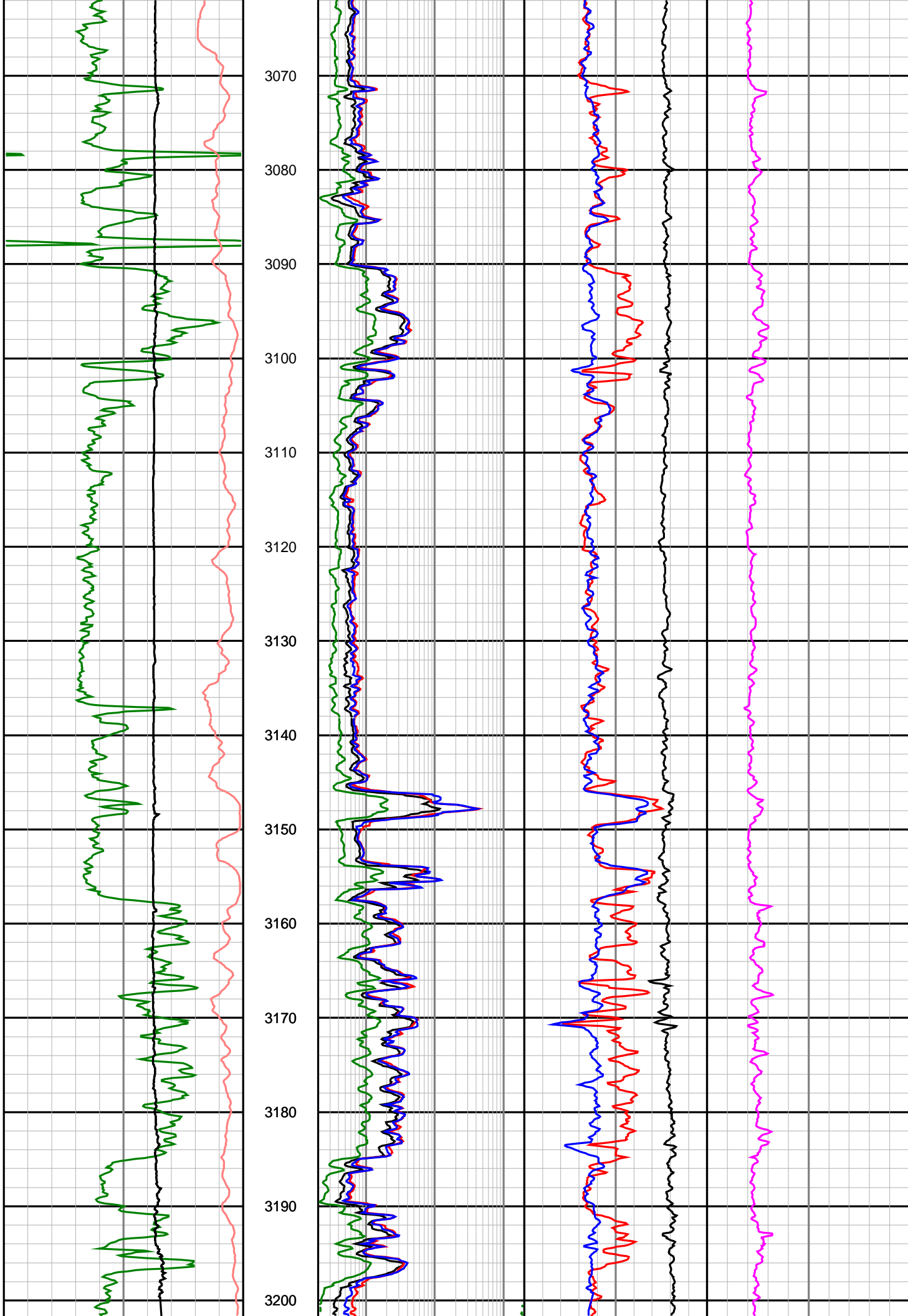
Culverin-1

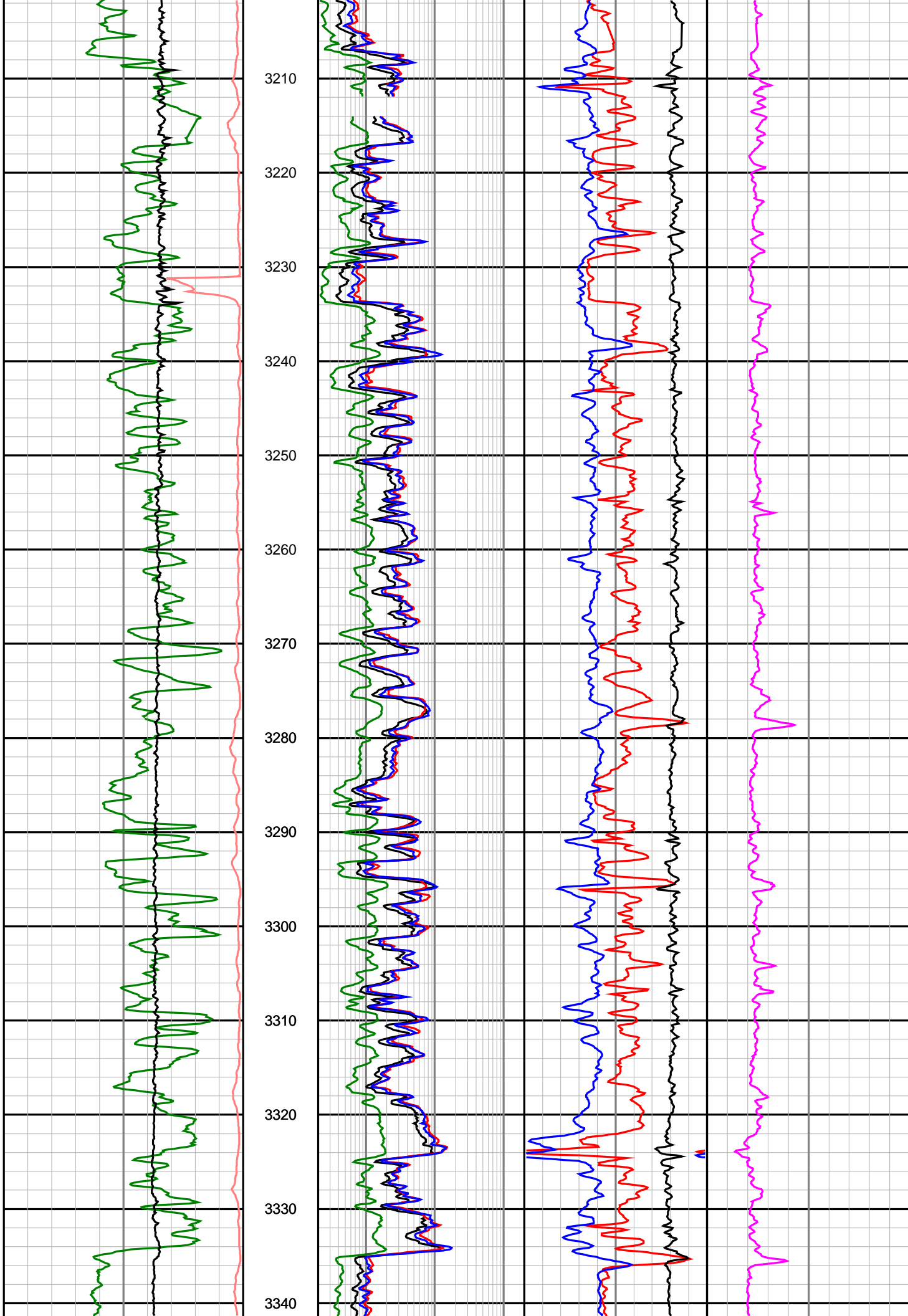
Realtime & Recorded LWD Log - 12 1/4" Hole Section

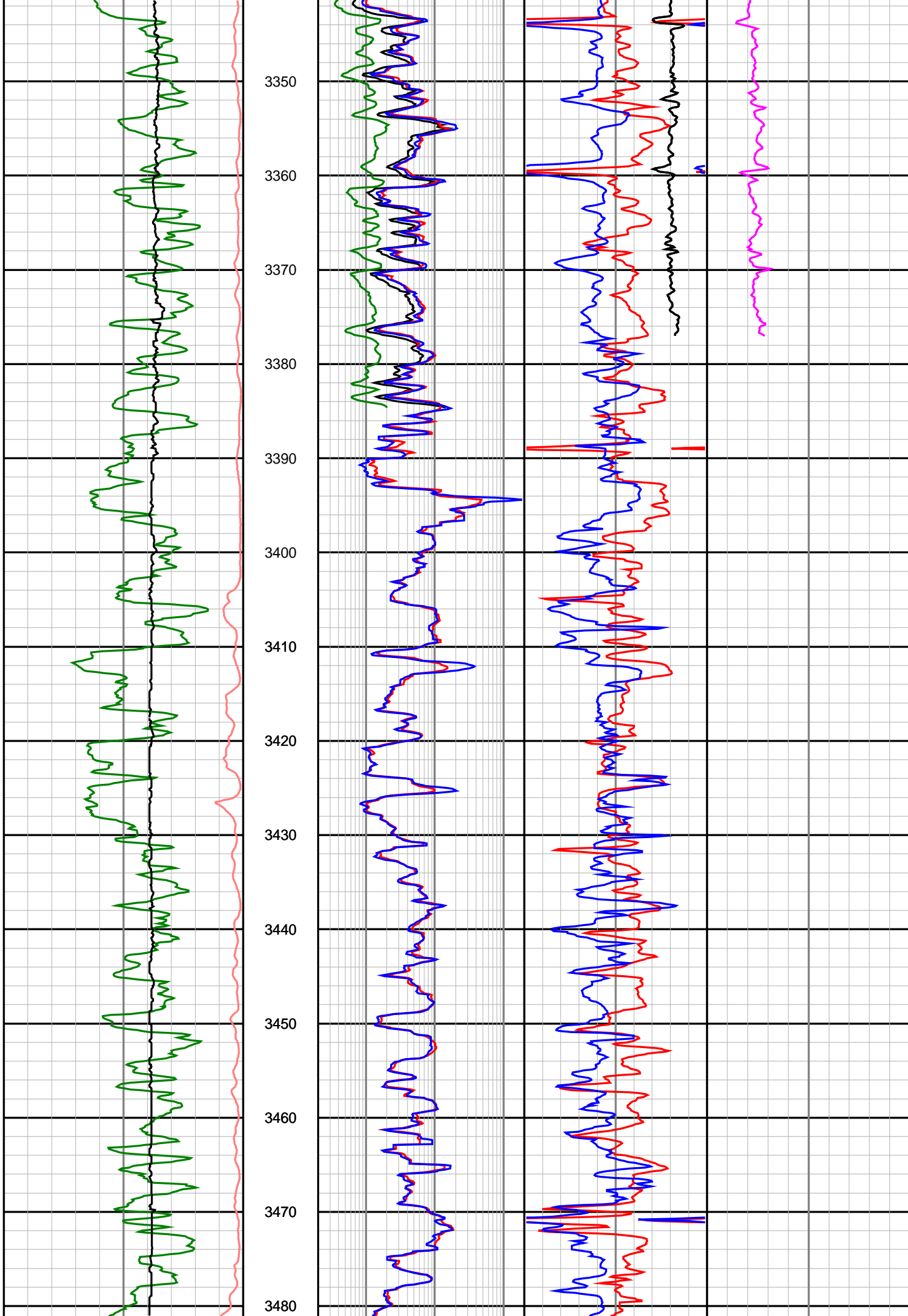


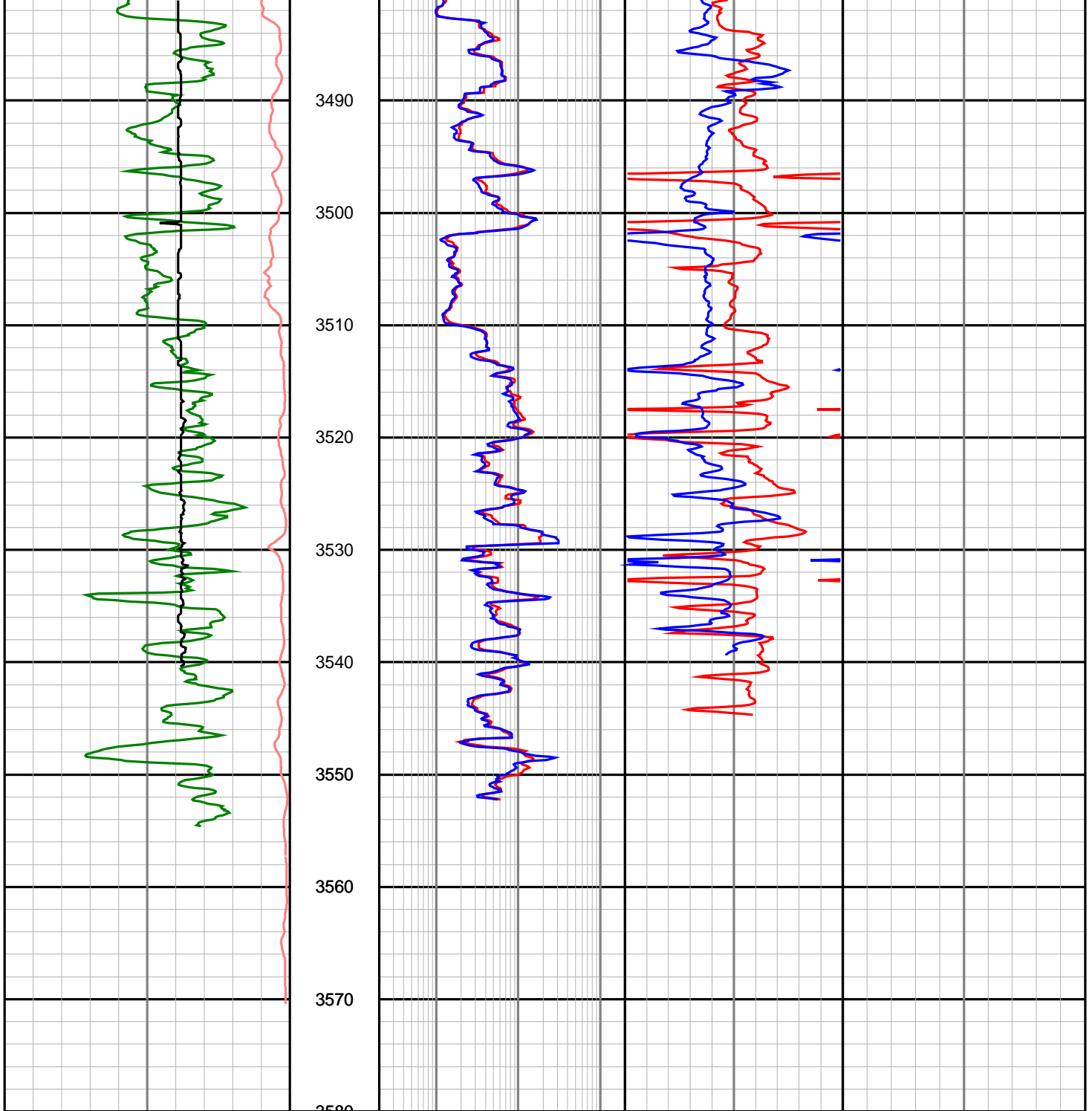












Gamma Ray (SGRC) 0 200 api	Depth MD 1:500	Ext Shallow Phase Res (SEXP) 0.2 200 ohmm	Best Bin Delta Rho (SCO2) -0.75 0.25 gram per cc	Photoelectric Effect (SNP2) 0 10 barns/electron
Rate of Penetration (SROP) 500 0 m/hr		Shallow Phase Res (SESP) 0.2 200 ohmm	Neutron Porosity (NUCL) 0.45 -0.15 v/v	
Caliper (ACAL) 6 16 inches		Medium Phase Res (SEMP) 0.2 200 ohmm	Best Bin Bulk Density (SBD2) 1.85 2.85 gram per cc	
		Deep Phase Res (SEDP) 0.2 200 ohmm		