

Company: Esso Australia Pty Ltd.

Well: BMA A3
Field: Bream A
Rig : Prod4 / Crane

Country: Australia

2-1/8" PowerJet MWPT Perforation Record
5" MPBT Posiset Plug Setting Record
9-Nov-2009

Prod4 / Crane
Bream A
Gippsland
BMA A3
Esso Australia Pty Ltd.

LOCATION		
Gippsland	Elev.:	K.B. 32.82 m
Basin		G.L. -59.00 m
Bass Strait		D.F. 32.82 m
Permanent Datum:	M.S.L	Elev.: 0.00 m
Log Measured From:	D.F	32.82 m above Perm. Datum
Drilling Measured From:	D.F	
State: Victoria	Max. Well Deviation 72.65 deg	Longitude 147 46'15"E
		Latitude 038 30'04"S

Logging Date	9-Nov-2009		
Run Number	1 to 5		
Depth Driller	3438 m		
Schlumberger Depth	3001.8 m		
Bottom Log Interval	3287 m		
Top Log Interval	3281 m		
Casing Fluid Type	Production Fluids		
Salinity			
Density			
Fluid Level	2960 m		
BIT/CASING/TUBING STRING			
Bit Size	6.750 in		
From	3216 m		
To	3438 m		
Casing/Tubing Size	5.000 in		
Weight	18 lbn/ft		
Grade	N-80		
From	3114 m		
To	3438 m		
Maximum Recorded Temperatures	202 degF		
Logger On Bottom	9-Nov-2009	Time	23:30
Unit Number	889	Location	Prod4 / AUSL
Recorded By	O Darby		
Witnessed By	G Rimmer		

PVT DATA				Run 1	Run 2	Run 3
Oil Density						
Water Salinity						
Gas Gravity						
Bo						
Bw						
1/Bg						
Bubble Point Pressure						
Bubble Point Temperature						
Solution GOR						
Maximum Deviation	72.65 deg					
CEMENTING DATA						
Primary/Squeeze	Primary					
Casing String No						
Lead Cement Type						
Volume						
Density						
Water Loss						
Additives						
Tail Cement Type						
Volume						
Density						
Water Loss						
Additives						
Expected Cement Top						
Logging Date						
Run Number						
Depth Driller						
Schlumberger Depth						
Bottom Log Interval						
Top Log Interval						
Casing Fluid Type						
Salinity						
Density						
Fluid Level						
BIT/CASING/TUBING STRING						
Bit Size						
From						
To						
Casing/Tubing Size						
Weight						
Grade						
From						
To						
Maximum Recorded Temperatures						
Logger On Bottom		Time				
Unit Number		Location				
Recorded By						
Witnessed By						

DEPTH SUMMARY LISTING

Depth System Equipment Date Created: 10-NOV-2009 5:14:35

Depth Measuring Device		Tension Device		Logging Cable	
Type:	IDW-EB	Type:	PSDS/OSDS	Type:	2-32ZT
Serial Number:	6373	Serial Number:	325357	Serial Number:	207505
Calibration Date:	13-Oct-2009	Calibration Date:	21-Oct-2009	Length:	6421 M
Calibrator Serial Number:	30	Calibrator Serial Number:	854	Conveyance Method:	Wireline
Calibration Cable Type:	2-32ZT	Number of Calibration Points:	9	Rig Type:	Rigless
Wheel Correction 1:	0	Calibration RMS:	454		
Wheel Correction 2:	-2	Calibration Peak Error:	281		

Depth Control Parameters	
--------------------------	--

Log Sequence:	Subsequent Trip To the Well
Reference Log Name:	
Reference Log Run Number:	Solar Composite Log
Reference Log Date:	
Subsequent Trip Down Log Correction:	

Depth Control Remarks	
-----------------------	--

1. IDW used as primary depth control
2. Z Chart used as secondary depth control.

DISCLAIMER

THE USE OF AND RELIANCE UPON THIS RECORDED-DATA BY THE HEREIN NAMED COMPANY (AND ANY OF ITS AFFILIATES, PARTNERS, REPRESENTATIVES, AGENTS, CONSULTANTS AND EMPLOYEES) IS SUBJECT TO THE TERMS AND CONDITIONS AGREED UPON BETWEEN SCHLUMBERGER AND THE COMPANY, INCLUDING: (a) RESTRICTIONS ON USE OF THE RECORDED-DATA; (b) DISCLAIMERS AND WAIVERS OF WARRANTIES AND REPRESENTATIONS REGARDING COMPANY'S USE OF AND RELIANCE UPON THE RECORDED-DATA; AND (c) CUSTOMER'S FULL AND SOLE RESPONSIBILITY FOR ANY INFERENCE DRAWN OR DECISION MADE IN CONNECTION WITH THE USE OF THIS RECORDED-DATA.

OTHER SERVICES1	OTHER SERVICES2
OS1: None	OS1:
OS2:	OS2:
OS3:	OS3:
OS4:	OS4:
OS5:	OS5:

REMARKS: RUN NUMBER 1

Log correlated to ExxonMobil composite supplied with logging program.

Maximum Well Deviation : 72 Deg @ 3414m, Average 52.3 Deg

Objective:

- | |
|---|
| <p>– Add perforations over the interval 3281.0m to 3278.0m MDKB using 2–1/8" 6 SPF, 45Deg phased PowerJet perfoating gun with MWPT.</p> |
|---|

- Isolate the current Zone 3299.2m to 3320.8m MDKB by setting a 5" MPBT plug

@ 3208m MDKB and dump bailing cement above plug

Before perforation
BHT 201.9 DegF, BHP 2634.0Pisa
After perforation
BHT 202.4DegF, BHP 2632.9Psia

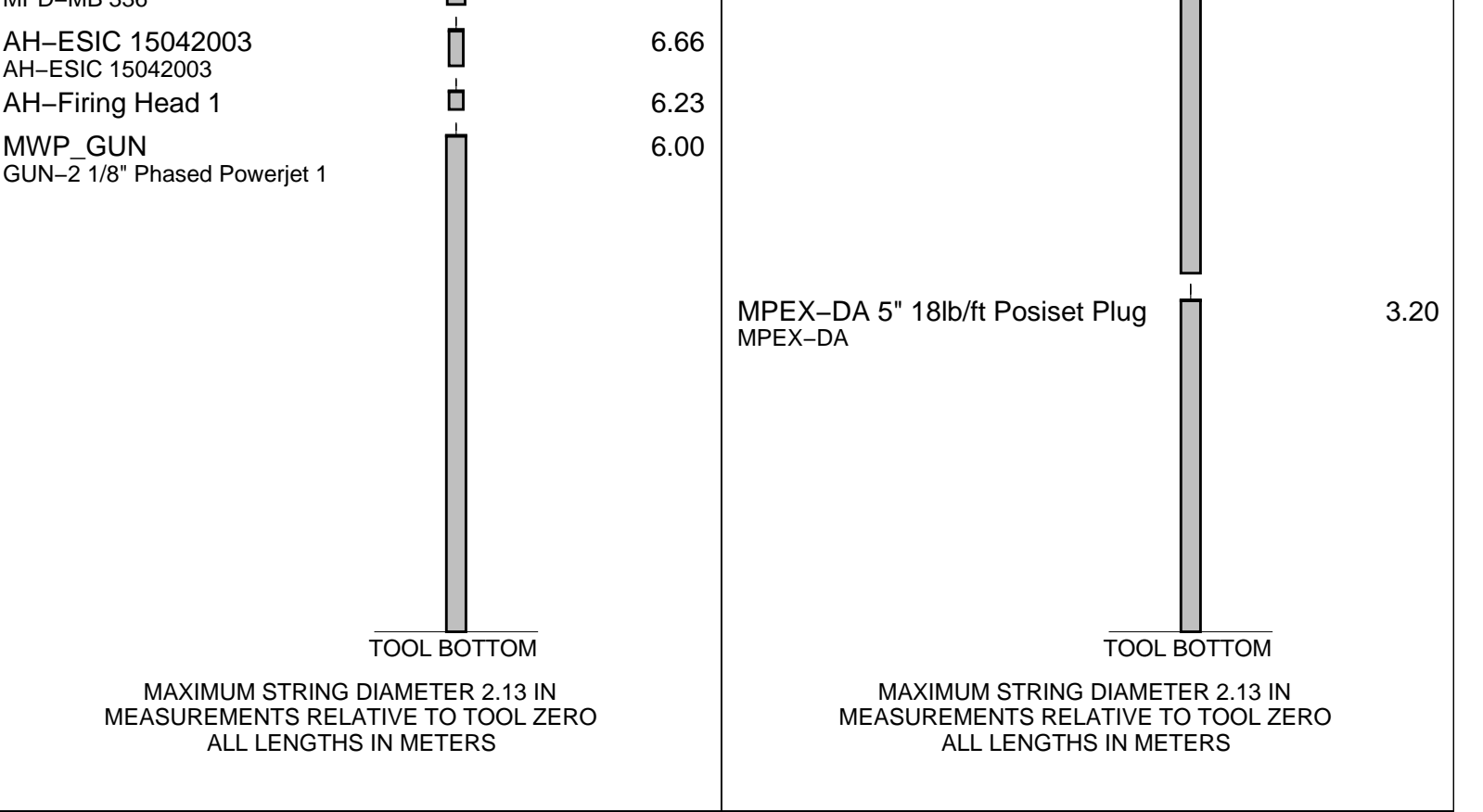
Crew: Gary Martin & Daniel Halstead

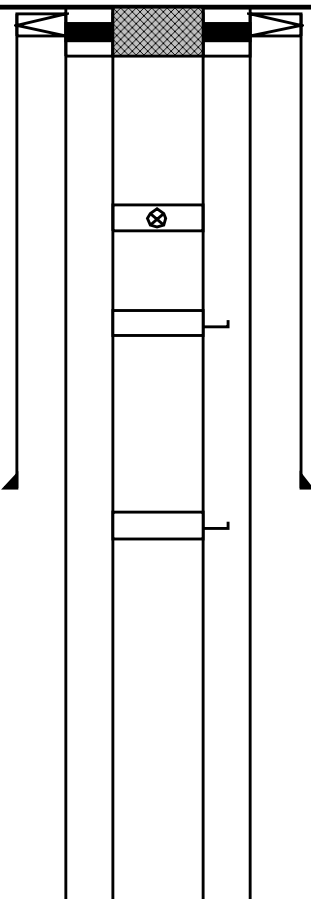
RUN 1 SERVICE ORDER #: PROGRAM VERSION: FLUID LEVEL:			RUN 2 SERVICE ORDER #: PROGRAM VERSION: FLUID LEVEL:		
B69I-00013 17C0-154 2960 m					
LOGGED INTERVAL	START	STOP	LOGGED INTERVAL	START	STOP

[illegible]

RUN 1		RUN 2	
MWPM-AA	SURFACE EQUIPMENT	MPBM	SURFACE EQUIPMENT

DOWNHOLE EQUIPMENT				DOWNHOLE EQUIPMENT			
AH-SWBS-B 789 AH-SWBS-B 789			15.64	AH-SWBS-B 785 AH-SWBS-B 785			13.84
AH-SWBS-B 788 AH-SWBS-B 788			14.96	AH-SWBS-B 786 AH-SWBS-B 786			13.15
AH-SWBS-B 787 AH-SWBS-B 787			14.27	AH-SWBS-B 787 AH-SWBS-B 787			12.47
AH-SWBS-B 786 AH-SWBS-B 786			13.59	AH-SWBS-B 788 AH-SWBS-B 788			11.78
AH-SWBS-B 785 AH-SWBS-B 785			12.90	AH-SWBS-B 789 AH-SWBS-B 789			11.10
MH-SWHS-A 759			12.21	MH-SWHS-A 759 MH-SWHS-A 759			10.41
AH-124 7002			11.88	CCL-PCCL 08055 CCL-PCCL 8055			10.07
MWGT-AA 24			11.78	MPSU-CA 1102 MPSU-CA 1102			9.61
MWPG-AA 24	MWPG GR	2.41					
MWGH-AA 24							
MWPT-CA 11			10.80				
MWPH-AA 94							
MWPS-AA 11							
	CCL SMWP Pres SMWP Temp Tension	TOOL ZERO					
AH-Flex Joint 41 AH-Flex Joint 41			7.99				
SAH-G 1047			7.53				
MPD-MB 336 MPD-MB 336			7.20				



Production String	(m)		MD	Well Schematic	(m)		MD	Casing String
	OD	ID			MD	OD	ID	
Tubing Hanger	3.998	3.500	10.0		11.0	10.750	7.000	Casing String Liner Hanger
Shutin Valve	3.500		455.0		11.0			
Gas Lift Mandrel	3.500		568.0					
					994.0	10.750		Casing Shoe
Gas Lift Mandrel	3.500		1141.0					



Job Events Summary

MAXIS Field Log

Schlumberger Job Event Summary

	Time	Elapsed Time	Depth (M)	File
Simulated Log	10-Nov-2009 18:19	000:27		PERFO_017LUP
OP checked MWPT				
Log Pass (up)	10-Nov-2009 20:14	000:06	3292.6 - 3224.0	PERFO_023LUP
MWPT - Correlation pass				
Log Pass (up)	10-Nov-2009 20:23	001:04	3292.1 - 3223.3	PERFO_024LUP
MWPT - Shooting pass				
Station Log	10-Nov-2009 20:28	000:55	3277.7	PERFO_026LTP
MWPT - Station log				
Log Pass (up)	10-Nov-2009 23:28	000:12	3298.4 - 3154.1	PERFO_033LUP
Dummy plug - Correlation pass				
Simulated Log	11-Nov-2009 3:37	000:18		CCL_051LUP
MPBT - Setting Record				
Simulated Log	11-Nov-2009 18:31	000:00		PERFO_060LUP
OP checking Dump bailer				
Log Pass (down)	11-Nov-2009 18:51	000:40	1.4 - 3288.9	PERFO_064LDP

Dump	bailer - Water dumping record
Pass	(up) 11-Nov-2009 21:16 000:08 3284.1 - 3187.9 PERFO_075LUP
Dump	bailer - Cement dumping record



2-1/8" Dump Bailer Cement Dump

MAXIS Field Log

PERF02 Operational Summary Listing

Device	Status	Req Depth (M)	Obs Depth (M)	Time Used
Cement	DB Used	3284.1	3284.1	Wed Nov 11 20:33:19 200

Input DLIS Files

DEFAULT	PERFO_075LUP	FN:73	PRODUCER	11-Nov-2009 21:16	3284.1 M	3187.9 M
---------	--------------	-------	----------	-------------------	----------	----------

Output DLIS Files

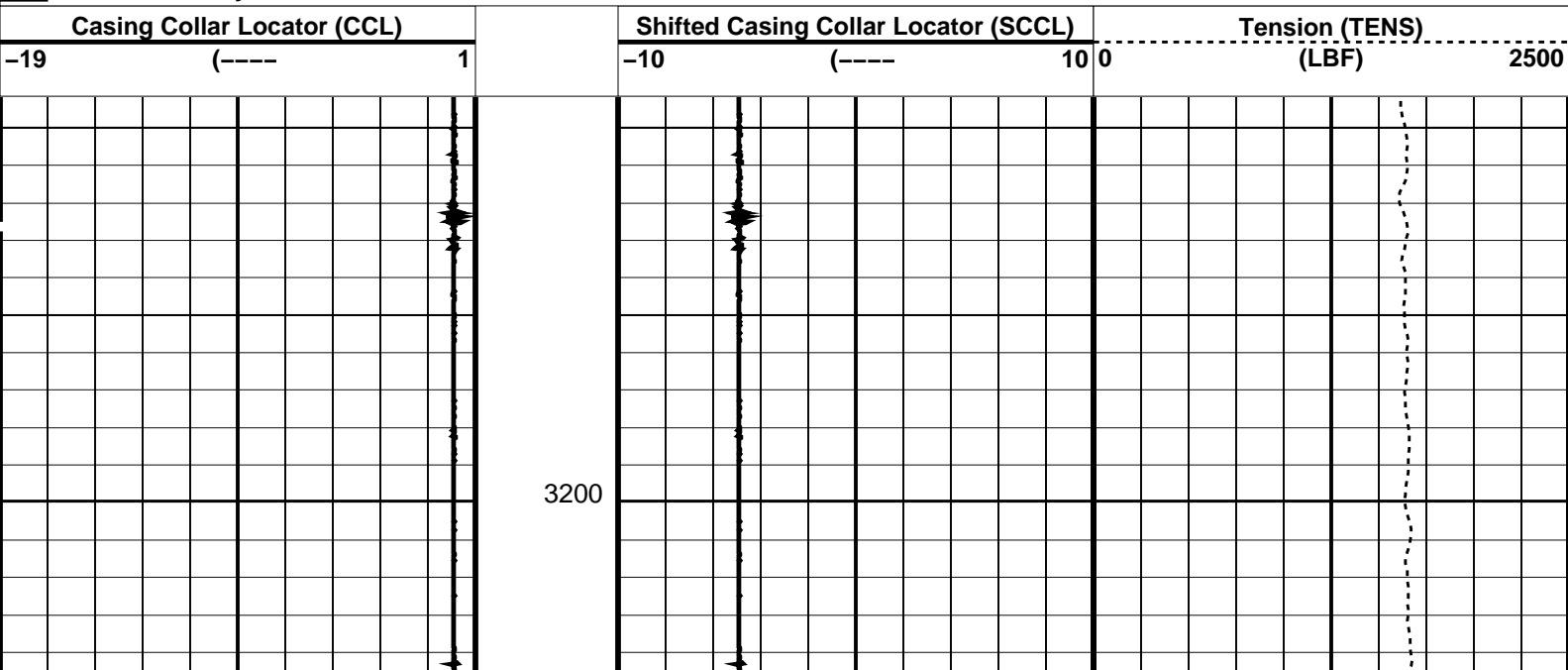
DEFAULT	PERFO 076PUP	FN:74	PRODUCER	11-Nov-2009 21:25	3285.1 M	3189.1 M
---------	--------------	-------	----------	-------------------	----------	----------

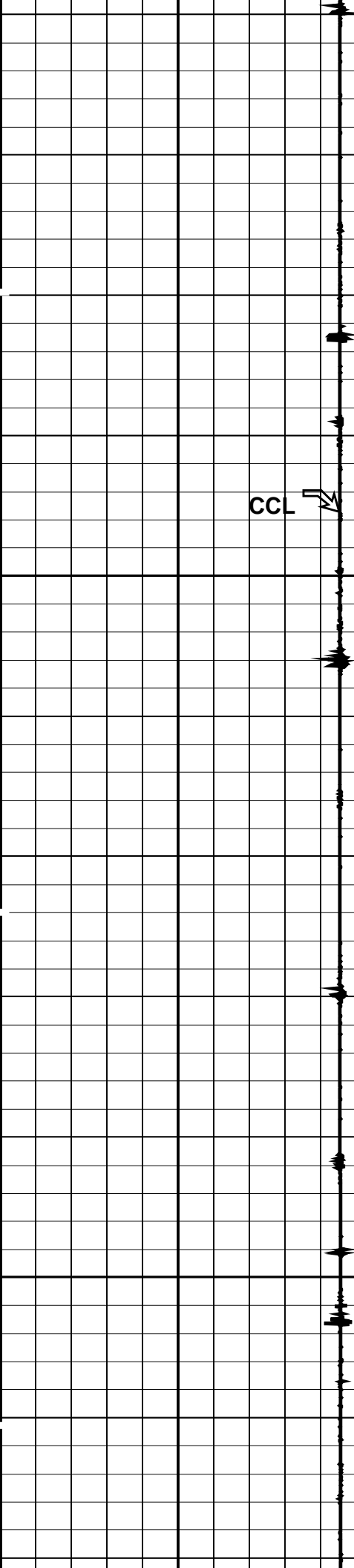
OP System Version: 17C0-154

CCL-L	17C0-154	SHM GUN	17C0-154
-------	----------	---------	----------

PIP SUMMARY

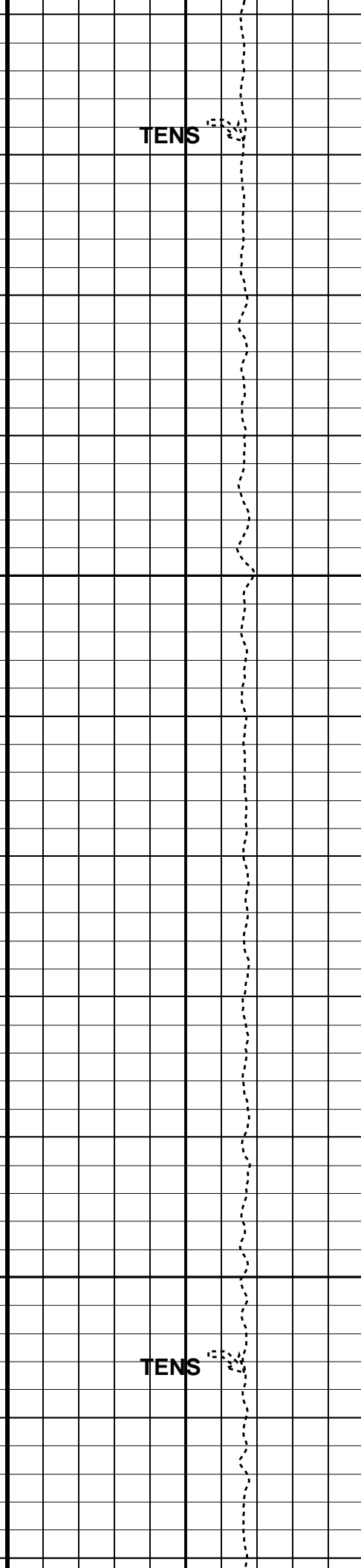
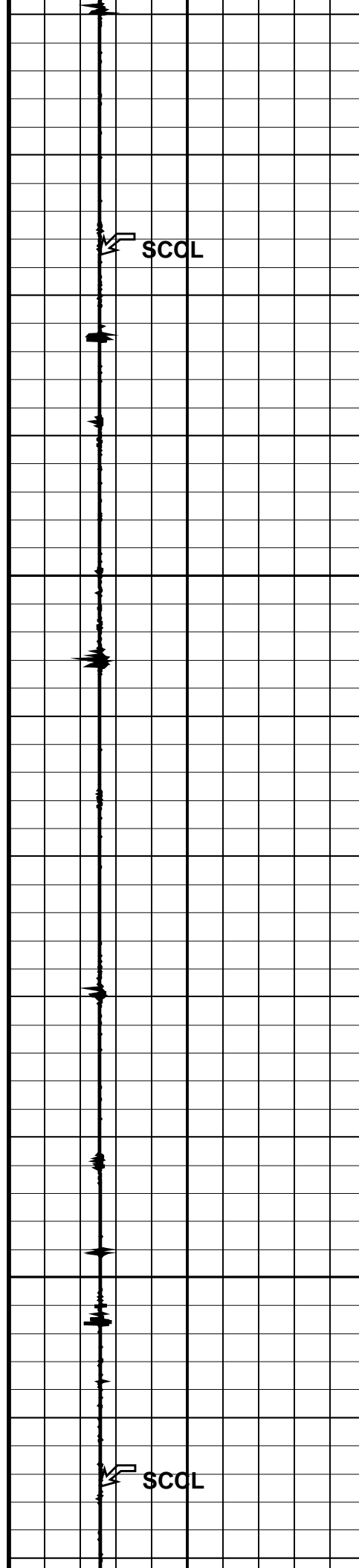
Time Mark Every 60 S

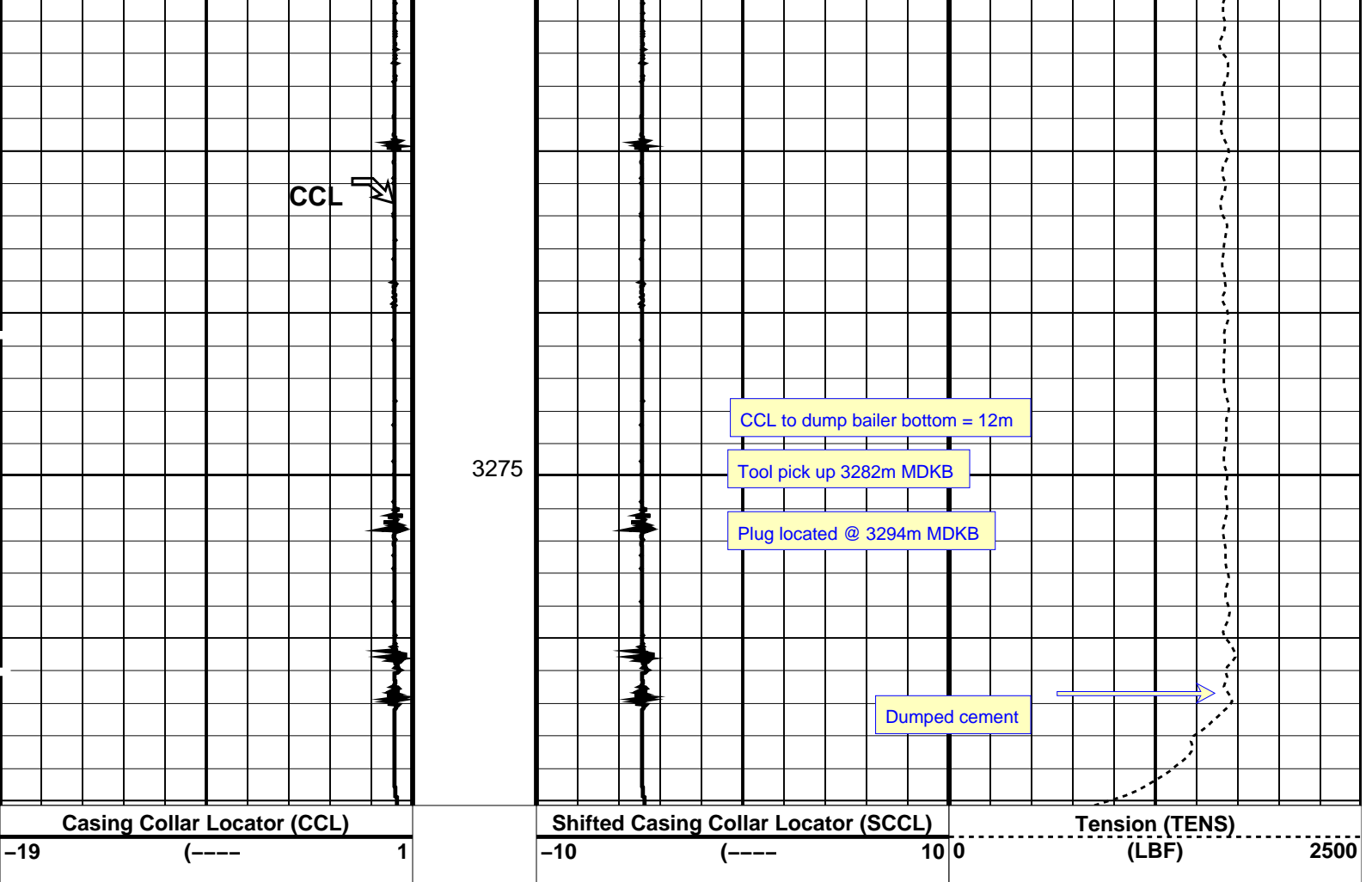




3225

3250





PIP SUMMARY

Time Mark Every 60 S

Parameters

DLIS Name	Description	Value
CCLD	CCL-L: Casing Collar Locator	
CCLT	CCL reset delay	12 IN
	CCL Detection Level	0.3 V
DO	System and Miscellaneous	
PP	Depth Offset for Playback	1.1 M
	Playback Processing	NORMAL

Format: PERFO Vertical Scale: 1:200

Graphics File Created: 11-Nov-2009 21:25

OP System Version: 17C0-154

CCL-L 17C0-154 SHM_GUN 17C0-154

Input DLIS Files

DEFAULT PERFO_075LUP FN:73 PRODUCER 11-Nov-2009 21:16 3284.1 M 3187.9 M

Output DLIS Files

DEFAULT PERFO_076PUP FN:74 PRODUCER 11-Nov-2009 21:25

Schlumberger

**2-1/8" Dump Bailer
Water Dump**

PERFO2 Operational Summary Listing

Device	Status	Req Depth (M)	Obs Depth (M)	Time Used
-----	-----	-----	-----	-----
Water DB	Used	3284.1	3284.1	Wed Nov 11 19:33:19 200

Input DLIS Files

DEFAULT	PERFO_065LUP	FN:63	PRODUCER	11-Nov-2009 19:31	3288.9 M	3193.4 M
---------	--------------	-------	----------	-------------------	----------	----------

Output DLIS Files

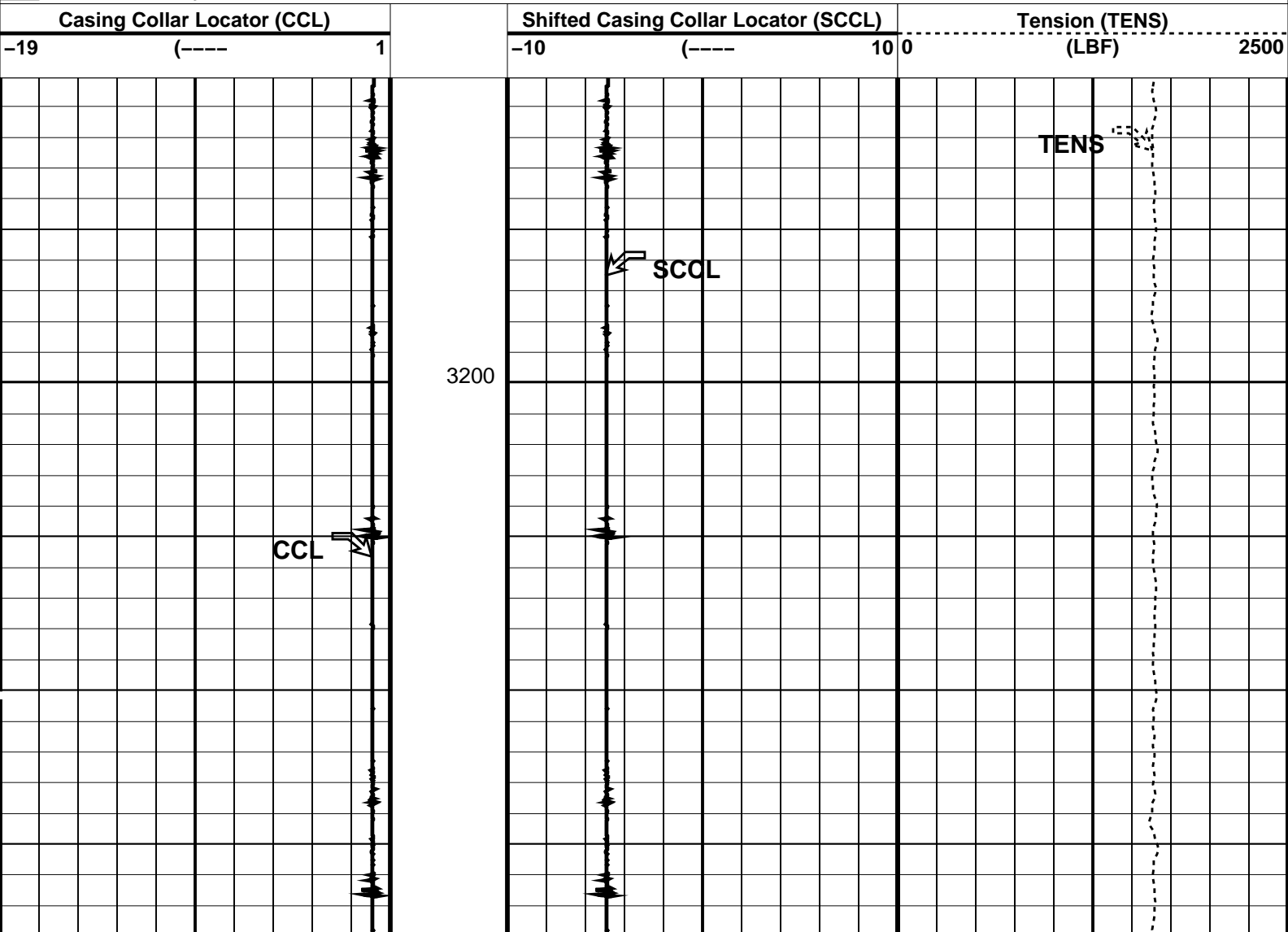
DEFAULT	PERFO_067PUP	FN:65	PRODUCER	11-Nov-2009 19:43	3285.6 M	3190.0 M
---------	--------------	-------	----------	-------------------	----------	----------

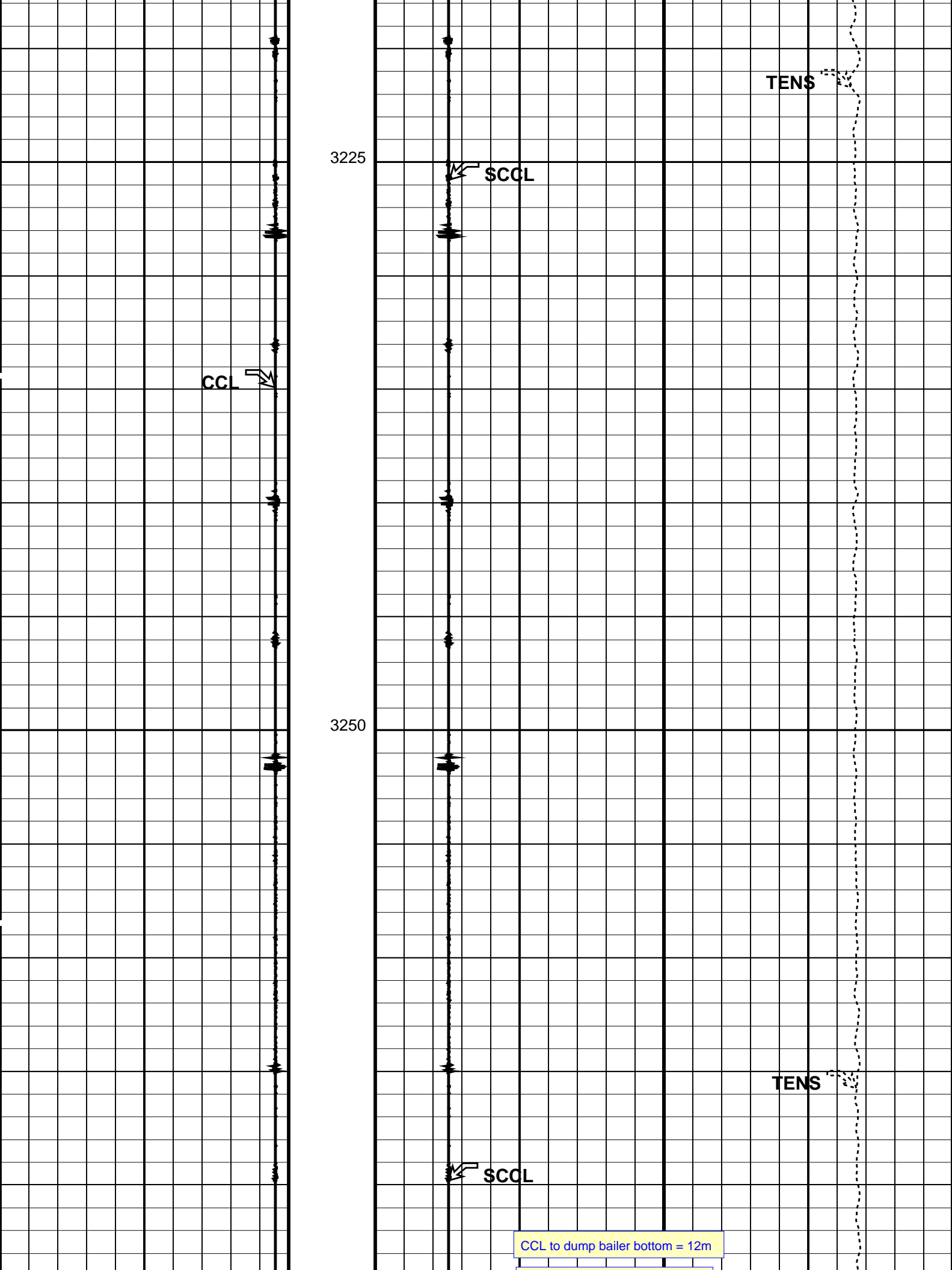
OP System Version: 17C0-154

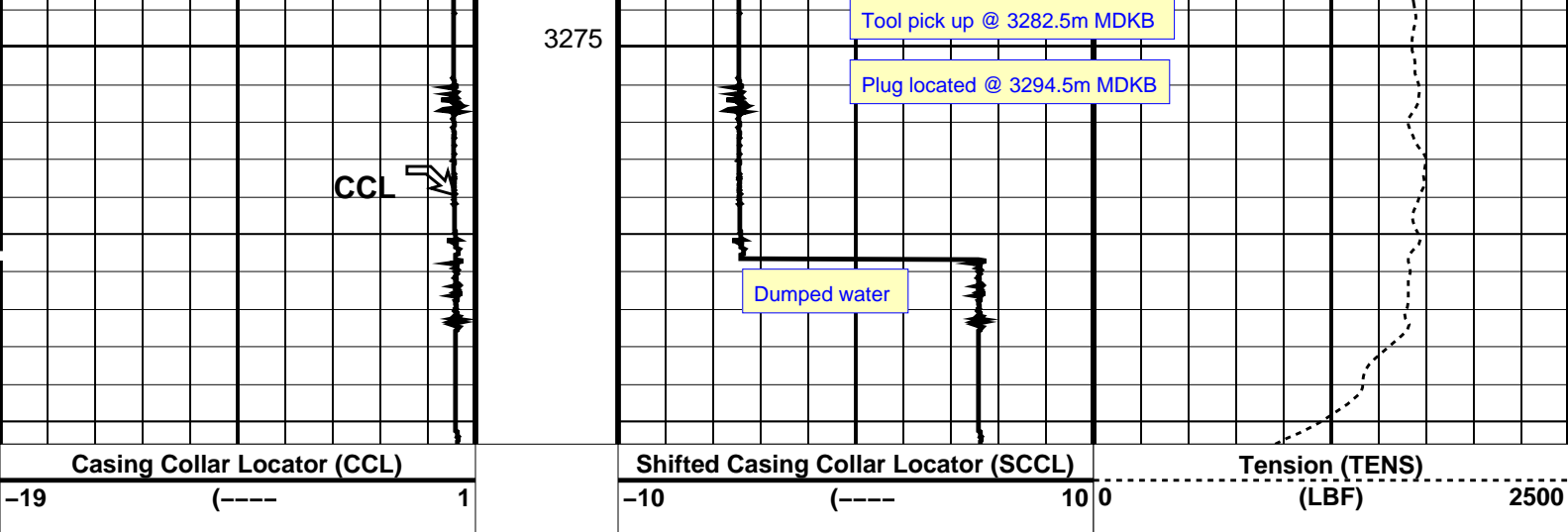
CCL-L	17C0-154	SHM_GUN	17C0-154
-------	----------	---------	----------

PIP SUMMARY

Time Mark Every 60 S







PIP SUMMARY

Time Mark Every 60 S

Parameters

DLIS Name	Description	Value
CCLD	CCL-L: Casing Collar Locator	12 IN
CCLT	CCL reset delay	0.3 V
	CCL Detection Level	
DO	System and Miscellaneous	
PP	Depth Offset for Playback	-3.4 M
	Playback Processing	NORMAL

Format: PERFO Vertical Scale: 1:200 Graphics File Created: 11-Nov-2009 19:43

OP System Version: 17C0-154

CCL-L 17C0-154 SHM_GUN 17C0-154

Input DLIS Files

DEFAULT PERFO_065LUP FN:63 PRODUCER 11-Nov-2009 19:31 3288.9 M 3193.4 M

Output DLIS Files

DEFAULT PERFO_067PUP FN:65 PRODUCER 11-Nov-2009 19:43

Schlumberger

5" MPBT Posiset Plug Setting Record

MAXIS Field Log

PERFO2 Operational Summary Listing

Device	Status	Req Depth (M)	Obs Depth (M)	Time Used
-----	-----	-----	-----	-----
MPEX	Used	3294.5	3294.5	Wed Nov 11 03:55:54 200

Output DLIS Files

DEFAULT

CCL_051LUP

FN:50

PRODUCER

11-Nov-2009 03:37

OP System Version: 17C0-154

MPEX-DA
CCL-PCCL

17C0-154
17C0-154

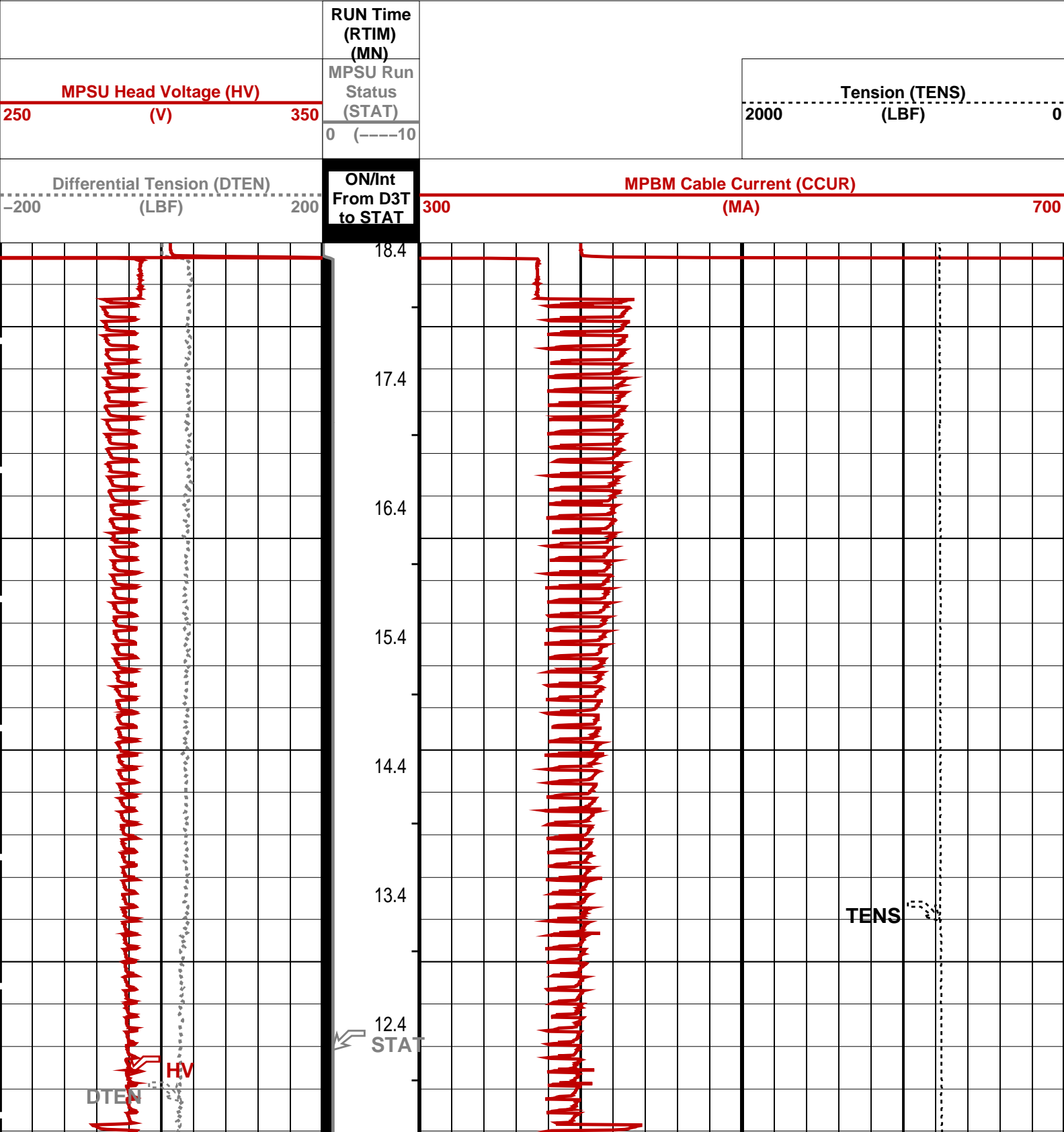
MPSU-CA

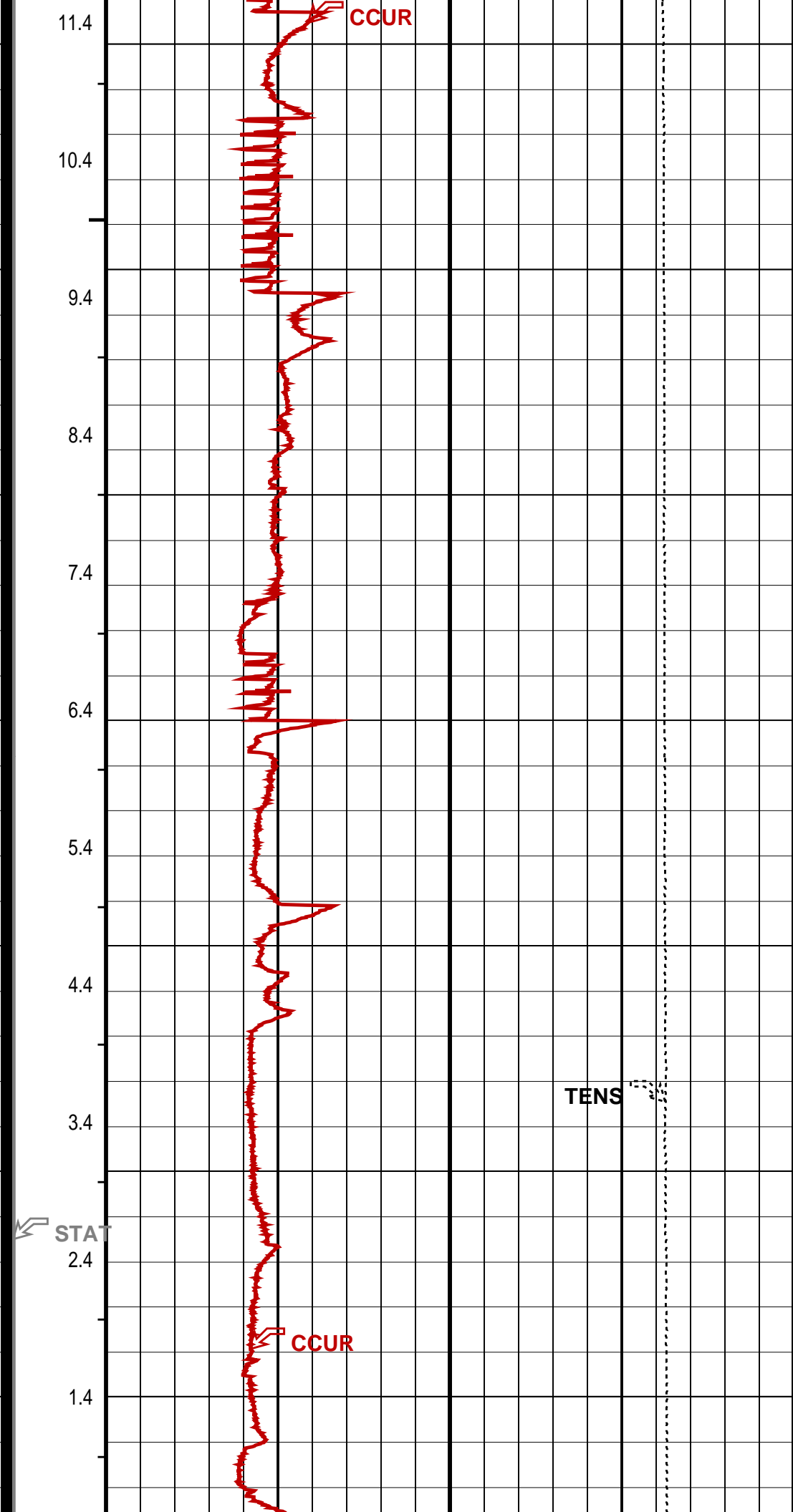
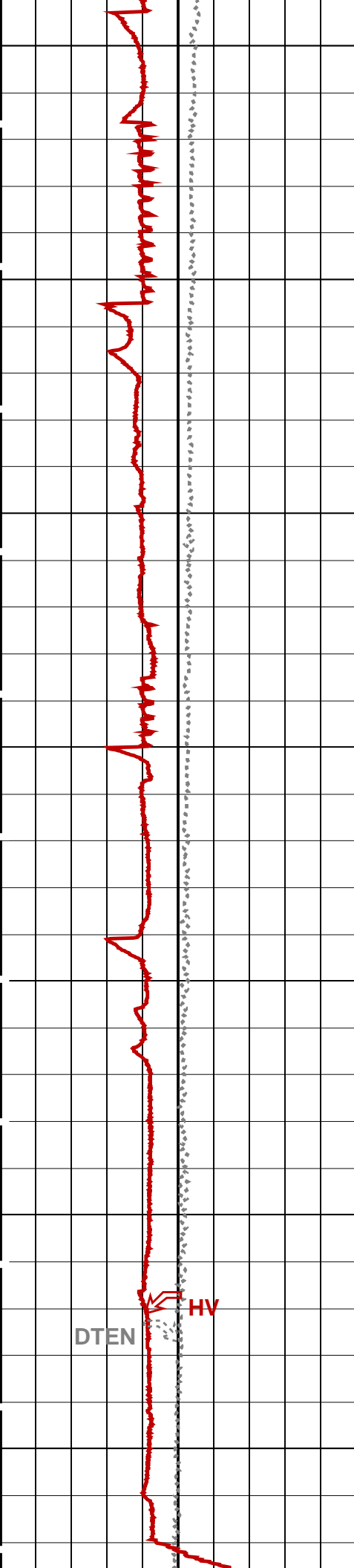
17C0-154

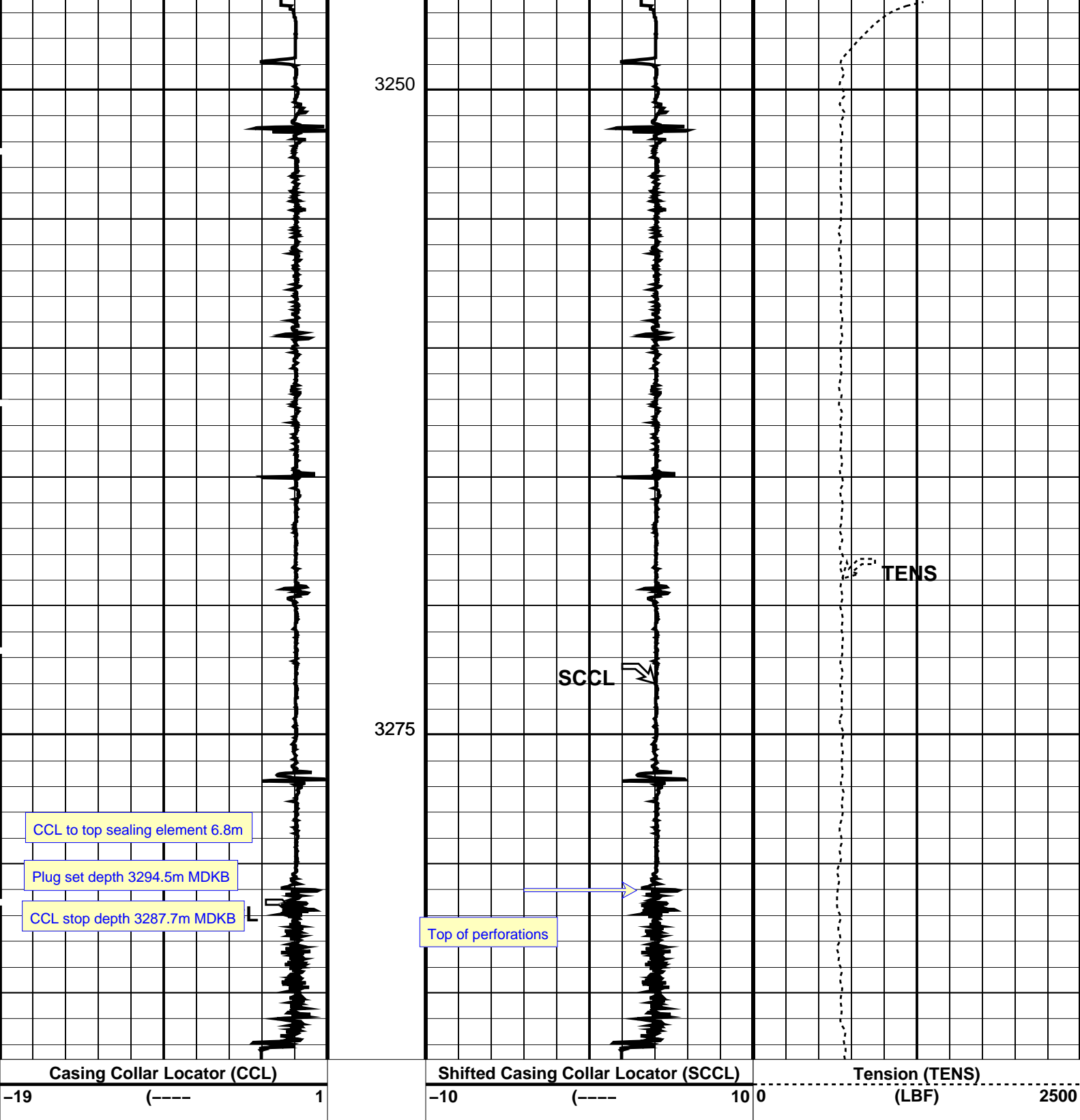
PIP SUMMARY

- └ MPSU Run Time Every 1 MN
- └ MPSU Run Time Every 10 MN

Time Mark Every 60 S







PIP SUMMARY

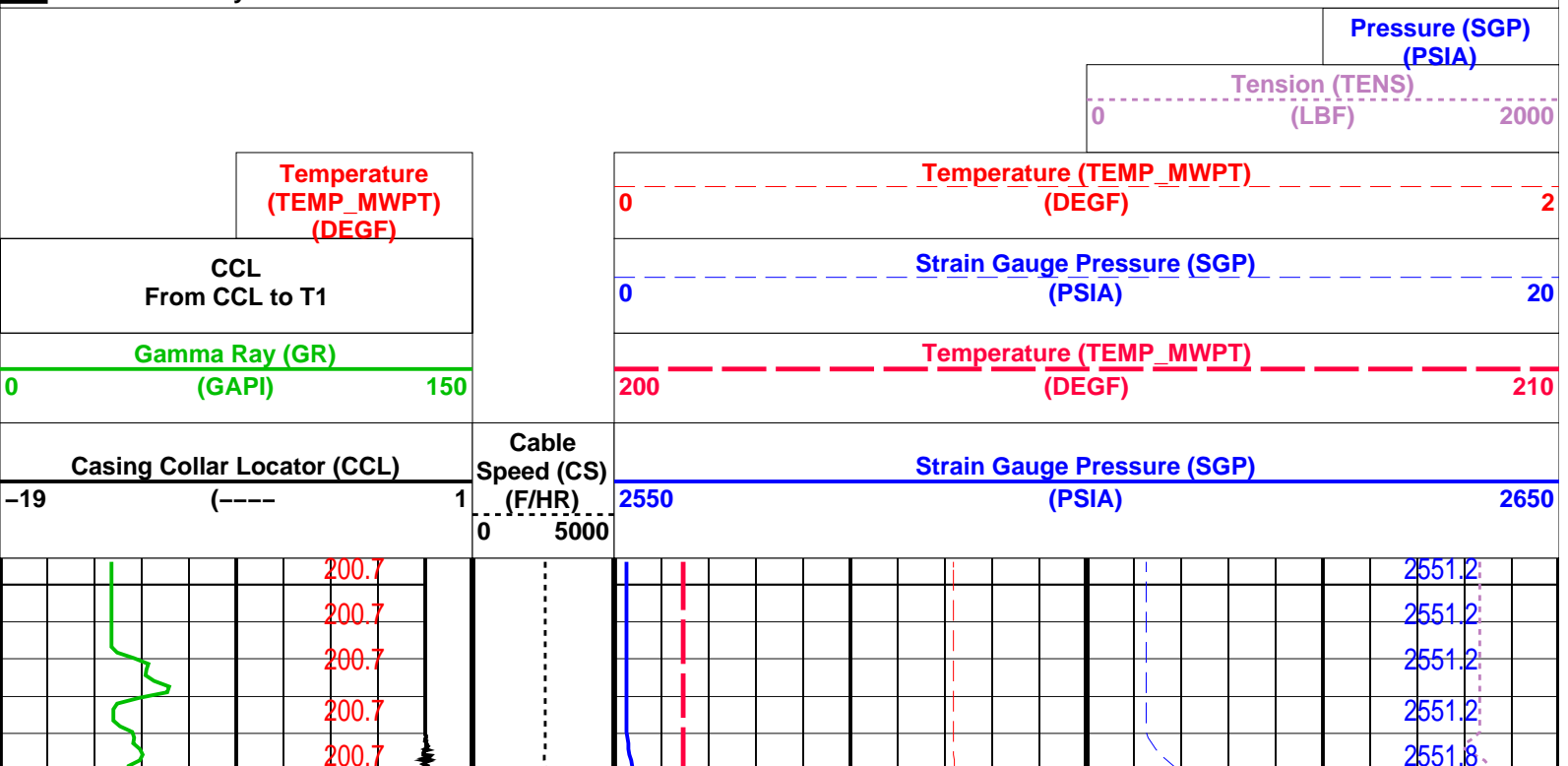
Time Mark Every 60 S

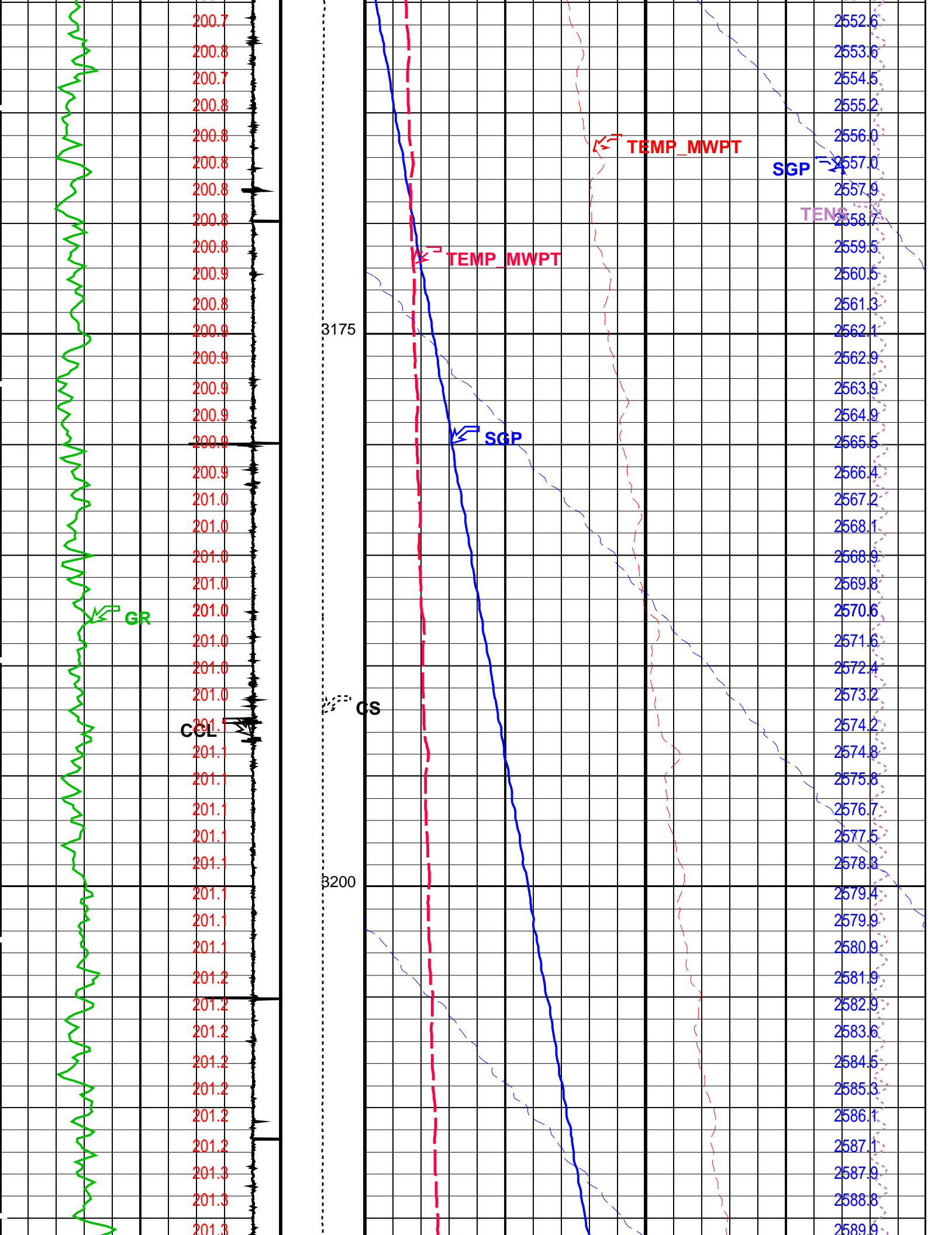
Parameters		
DLIS Name	Description	Value
CCLD	CCL-PCCL: Casing Collar Locator	
CCLT	CCL reset delay	12 IN
	CCL Detection Level	0.3 V
System and Miscellaneous		
DO	Depth Offset for Playback	0.0 M
PP	Playback Processing	NORMAL

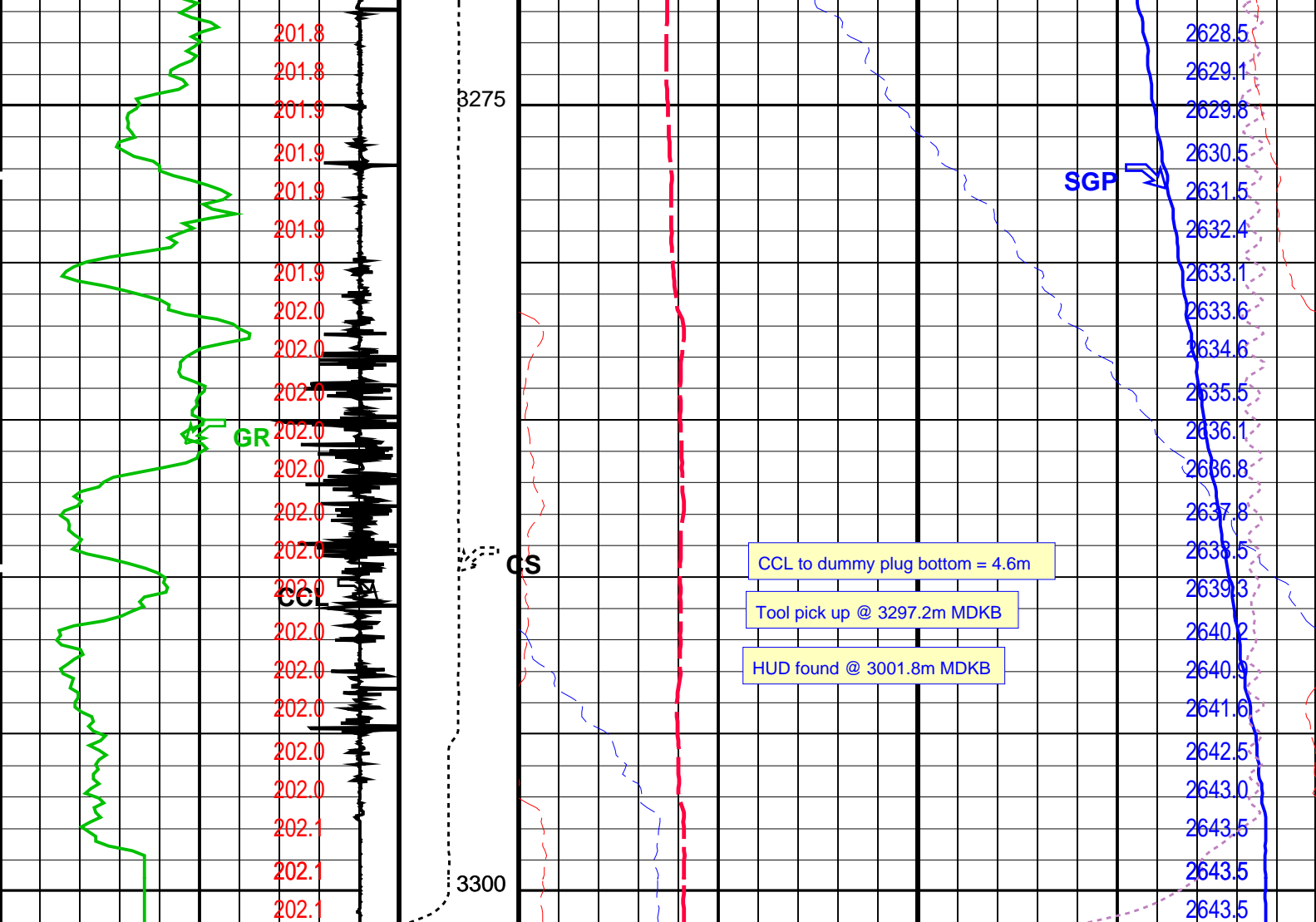
Format: PERFO Vertical Scale: 1:200 Graphics File Created: 11-Nov-2009 04:18

OP System Version: 17C0-154

17C0-154







Casing Collar Locator (CCL)		Cable Speed (CS) (F/HR)	Strain Gauge Pressure (SGP)	
-19	(----		2550	2650
Gamma Ray (GR)			Temperature (TEMP_MWPT)	
0	(GAPI) 150		200	210
CCL From CCL to T1			Strain Gauge Pressure (SGP)	
Temperature (TEMP_MWPT) (DEGF)			0	20
			Temperature (TEMP_MWPT)	
			0	2
			Tension (TENS)	
			0	2000
			Pressure (SGP)	

PIP SUMMARY

Time Mark Every 60 S

Parameters		
DLIS Name	Description	Value
MWPT-CA: MEASUREMENT WHILE PERFORATING TOOL		
DEVI_FL_CORR	Deviation Angle for Flow Line Correction	0 DEG
FLD	Flow Line Density	1 G/C3
MWPT_NULL_SOURCE	MWPT NULL Temperature Source	TEMS
MWPT_NULL_TEMP	MWPT NULL Temperature	0.0 DEGC
System and Miscellaneous		
DO	Depth Offset for Playback	2.6 M
PP	Playback Processing	NORMAL

OP System Version: 17C0-154

MWP_GUN	17C0-154	MWPT-CA	17C0-154
MWGT-AA	17C0-154		

Input DLIS Files						
DEFAULT	PERFO_033LUP	FN:32	PRODUCER	10-Nov-2009 23:28	3298.4 M	3154.1 M

Output DLIS Files						
DEFAULT	PERFO_037PUP	FN:36	PRODUCER	10-Nov-2009 23:47		

Schlumberger

2-1/8" PowerJet Gun – MWPT
Station Log

MAXIS Field Log

Company: Esso Australia Pty Ltd. Well: BMA A3

Input DLIS Files						
DEFAULT	PERFO_026LTP	FN:25	PRODUCER	10-Nov-2009 20:28	3277.7 M	

Output DLIS Files						
DEFAULT	PERFO_028PTP	FN:27	PRODUCER	10-Nov-2009 21:39	3277.7 M	

OP System Version: 17C0-154

MWP_GUN	17C0-154	MWPT-CA	17C0-154
MWGT-AA	17C0-154		

PIP SUMMARY

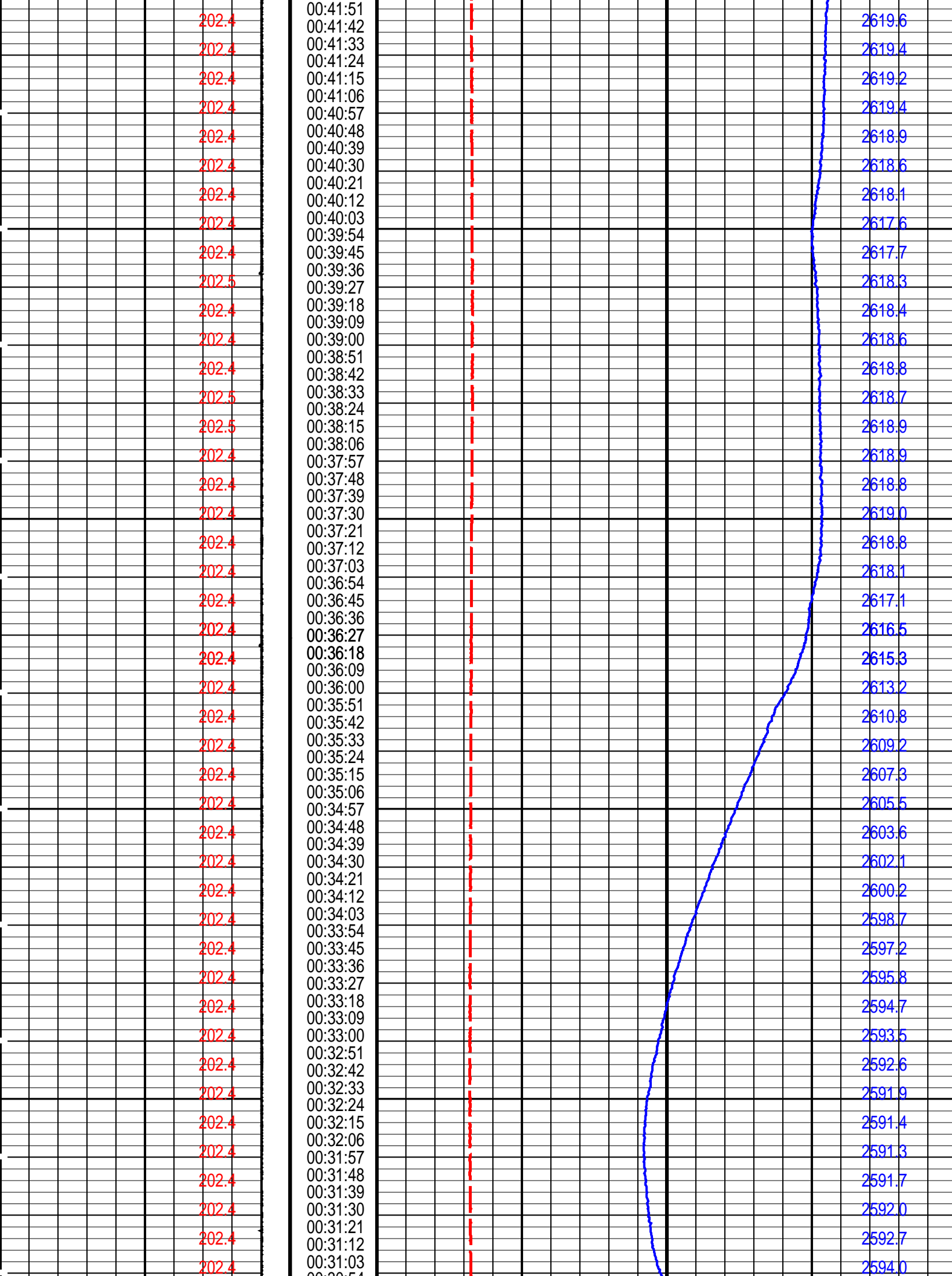
Time Mark Every 60 S

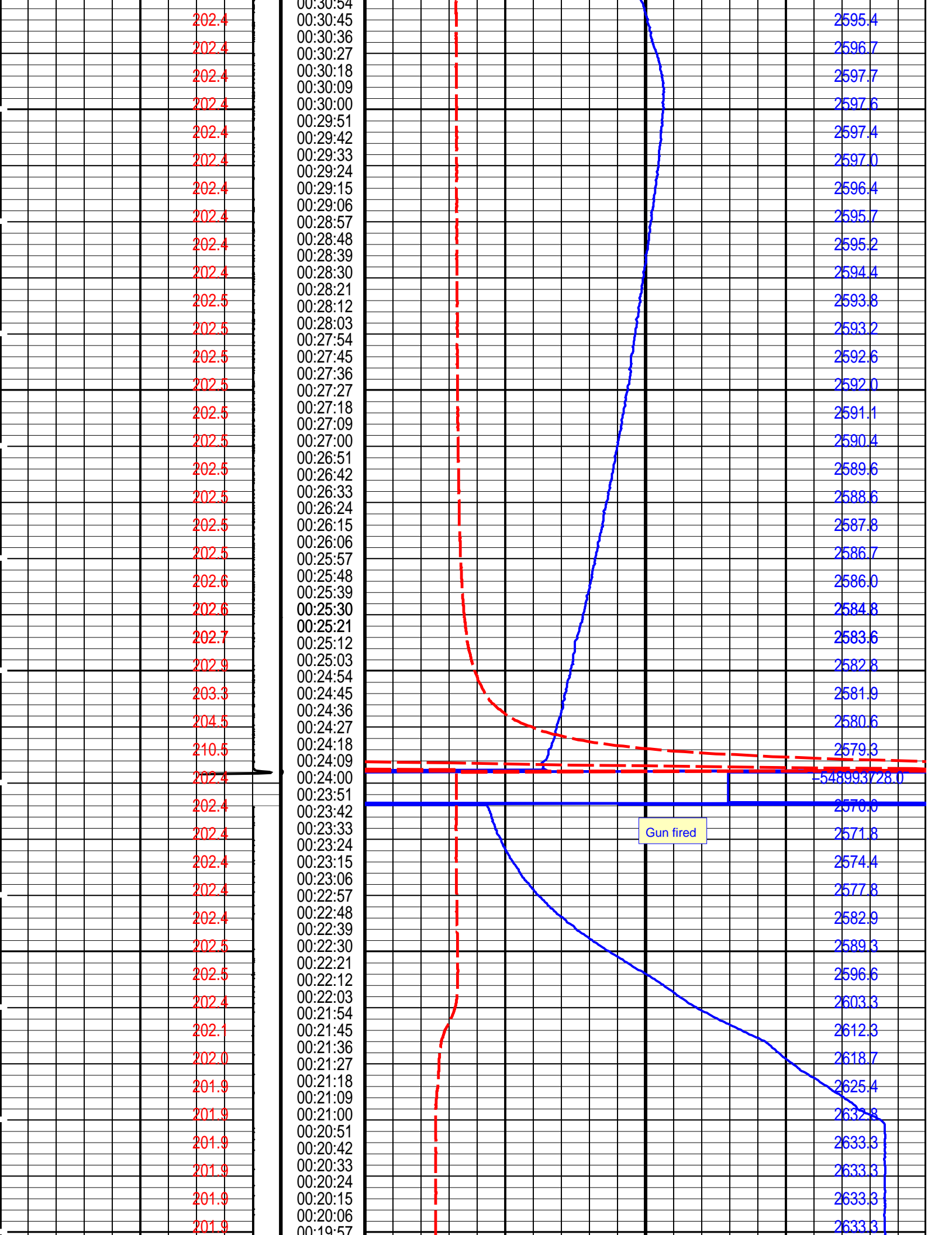
Temperature (TEMP_MWPT_SL) (DEGF)		Pressure (SGP_SL) (PSIA)	
CCL From CCL to T1	Firing Sequence State (FSS SL) (----)	Temperature (TEMP_MWPT_SL) (DEGF)	
	0 1024	200	215
Casing Collar Locator (CCL_SL)	Elapsed Time (ETIM) (S)	Strain Gauge Pressure (SGP_SL) (PSIA)	
-19 (----) 1		2550	2640
	00:54:27		
202.4	00:54:18		2631.4
	00:54:09		
202.4	00:54:00		2630.3
	00:53:51		
202.4	00:53:42		2628.7
	00:53:33		
202.4	00:53:24		2628.5
	00:53:15		
202.4	00:53:06		2628.1
	00:52:57		
202.4			2628.0

CCL SL

202.4	00:52:37
202.4	00:52:48
202.4	00:52:39
202.4	00:52:30
202.4	00:52:21
202.4	00:52:12
202.4	00:52:03
202.4	00:51:54
202.4	00:51:45
202.4	00:51:36
202.4	00:51:27
202.4	00:51:18
202.4	00:51:09
202.4	00:51:00
202.4	00:50:51
202.4	00:50:42
202.4	00:50:33
202.4	00:50:24
202.4	00:50:15
202.4	00:50:06
202.4	00:49:57
202.4	00:49:48
202.4	00:49:39
202.4	00:49:30
202.4	00:49:21
202.4	00:49:12
202.4	00:49:03
202.4	00:48:54
202.4	00:48:45
202.4	00:48:36
202.4	00:48:27
202.4	00:48:18
202.4	00:48:09
202.4	00:48:00
202.4	00:47:51
202.4	00:47:42
202.4	00:47:33
202.4	00:47:24
202.4	00:47:15
202.4	00:47:06
202.4	00:46:57
202.4	00:46:48
202.4	00:46:39
202.4	00:46:30
202.4	00:46:21
202.4	00:46:12
202.4	00:46:03
202.4	00:45:54
202.4	00:45:45
202.4	00:45:36
202.4	00:45:27
202.4	00:45:18
202.4	00:45:09
202.4	00:45:00
202.4	00:44:51
202.4	00:44:42
202.4	00:44:33
202.4	00:44:24
202.4	00:44:15
202.4	00:44:06
202.4	00:43:57
202.4	00:43:48
202.4	00:43:39
202.4	00:43:30
202.4	00:43:21
202.4	00:43:12
202.4	00:43:03
202.4	00:42:54
202.4	00:42:45
202.4	00:42:36
202.4	00:42:27
202.4	00:42:18
202.4	00:42:09
202.4	00:42:00

2628.1
2628.8
2628.9
2629.0
2628.8
2628.5
2627.8
2627.6
2627.9
2628.6
2628.6
2628.2
2627.7
2627.0
2626.7
2627.0
2627.3
2627.1
2626.3
2626.0
2625.7
2626.0
2625.6
2625.2
2624.9
2624.8
2624.4
2623.9
2623.7
2624.0
2624.1
2623.6
2623.4
2623.8
2623.7
2623.5
2623.2
2622.9
2622.5
2622.0
2621.6
2621.2
2620.6
2619.9





Time	Temp	Temp	Temp	Temp
00:19:48	201.9	2633.2		
00:19:39	201.9	2633.3		
00:19:30	201.9	2633.3		
00:19:21	201.9	2633.3		
00:19:12	201.9	2633.3		
00:19:03	201.9	2633.3		
00:18:54	201.9	2633.2		
00:18:45	201.9	2633.2		
00:18:36	201.9	2633.3		
00:18:27	201.9	2633.2		
00:18:18	201.9	2633.3		
00:18:09	201.9	2633.3		
00:18:00	201.9	2633.3		
00:17:51	201.9	2633.3		
00:17:42	201.9	2633.3		
00:17:33	201.9	2633.3		
00:17:24	201.9	2633.3		
00:17:15	201.9	2633.3		
00:17:06	201.9	2633.3		
00:16:57	201.9	2633.3		
00:16:48	201.9	2633.3		
00:16:39	201.9	2633.2		
00:16:30	201.9	2633.3		
00:16:21	201.9	2633.3		
00:16:12	201.9	2633.3		
00:16:03	201.9	2633.3		
00:15:54	201.9	2633.3		
00:15:45	201.9	2633.3		
00:15:36	201.9	2633.3		
00:15:27	201.9	2633.3		
00:15:18	201.9	2633.3		
00:15:09	201.9	2633.3		
00:15:00	201.9	2633.3		
00:14:51	201.9	2633.2		
00:14:42	201.9	2633.2		
00:14:33	201.9	2633.2		
00:14:24	201.9	2633.2		
00:14:15	201.9	2633.3		
00:14:06	201.9	2633.2		
00:13:57	201.9	2633.2		
00:13:48	201.9	2633.3		
00:13:39	201.9	2633.2		
00:13:30	201.9	2633.3		
00:13:21	201.9	2633.2		
00:13:12	201.9	2633.2		
00:13:03	201.9	2633.2		
00:12:54	201.9	2633.1		
00:12:45	201.9	2633.2		
00:12:36	201.9	2633.2		
00:12:27	201.9	2633.2		
00:12:18	201.9	2633.2		
00:12:09	201.9	2633.2		
00:12:00	201.9	2633.2		
00:11:51	201.9	2633.2		
00:11:42	201.9	2633.2		
00:11:33	201.9	2633.1		
00:11:24	201.9	2633.2		
00:11:15	201.9	2633.2		
00:11:06	201.9	2633.2		
00:10:57	201.9	2633.2		
00:10:48	201.9	2633.2		
00:10:39	201.9	2633.2		
00:10:30	201.9	2633.2		
00:10:21	201.9	2633.2		
00:10:12	201.9	2633.2		
00:10:03	201.9	2633.2		
00:09:54	201.9	2633.2		
00:09:45	201.9	2633.2		
00:09:36	201.9	2633.2		
00:09:27	201.9	2633.1		
00:09:18	201.9	2633.2		
00:09:09	201.9	2633.2		
00:09:00	201.9	2633.2		

	201.9	00:08:42							2633.3
	201.9	00:08:33							2633.1
	201.9	00:08:24							2633.1
	201.9	00:08:15							2633.1
	201.9	00:08:06							2633.2
	201.9	00:07:57							2633.1
	201.9	00:07:48							2633.1
	201.9	00:07:39							2633.1
	201.9	00:07:30							2633.1
	201.9	00:07:21							2633.1
	201.9	00:07:12							2633.1
	201.9	00:07:03							2633.1
	201.9	00:06:54							2633.2
	201.9	00:06:45							2633.2
	201.9	00:06:36							2632.8
	201.9	00:06:27							2633.1
	201.9	00:06:18							2633.1
	201.9	00:06:09							2633.1
	201.9	00:06:00							2633.1
	201.9	00:05:51							2633.1
	201.9	00:05:42							2633.1
	201.9	00:05:33							2633.1
	201.9	00:05:24							2633.1
	201.9	00:05:15							2633.1
	201.9	00:05:06							2633.1
	201.9	00:04:57							2633.1
	201.9	00:04:48							2633.1
	201.9	00:04:39							2633.0
	201.9	00:04:30							2633.1
	201.9	00:04:21							2633.1
	201.9	00:04:12							2633.0
	201.9	00:04:03							2633.0
	201.9	00:03:54							2633.0
	201.9	00:03:45							2633.0
	201.9	00:03:36							2632.9
	201.9	00:03:27							2633.0
	201.9	00:03:18							2633.0
	201.9	00:03:09							2633.0
	201.9	00:03:00							2633.0
	201.9	00:02:51							2633.0
	201.9	00:02:42							2633.0
	201.9	00:02:33							2633.0
	201.9	00:02:24							2633.0
	201.9	00:02:15							2632.9
	201.9	00:02:06							2632.9
	201.9	00:01:57							2632.9
	201.9	00:01:48							2632.9
	201.9	00:01:39							2633.0
	201.9	00:01:30							2632.9
	201.9	00:01:21							2632.9
	201.9	00:01:12							2632.9
	201.9	00:01:03							2632.9
	201.9	00:00:54							2632.9
	201.9	00:00:45							2632.9
	201.9	00:00:36							2632.9
	201.9	00:00:27							2632.9
	201.9	00:00:18							2632.9
	201.9	00:00:09							2632.9
	201.9	00:00:00							2632.9
Casing Collar Locator (CCL_SL)		Elapsed Time (ETIM) (S)	Strain Gauge Pressure (SGP_SL)						
-19	(----	1	2550	(PSIA)					2640
CCL From CCL to T1		Firing Sequence State (FSS SL) (----	Temperature (TEMP_MWPT_SL) (DEGF)						
		0 1024	200						215
	Temperature (TEMP_MWPT_SL) (DEGF)							Pressure (SGP_SL) (PSIA)	

Time Mark Every 60 S

Parameters

DLIS Name	Description	Value	
MWPT-CA	MEASUREMENT WHILE PERFORATING TOOL		
DEVI_FL_CORR	Deviation Angle for Flow Line Correction	0	DEG
FLD	Flow Line Density	1	G/C3
MWPT_NULL_SOURCE	MWPT NULL Temperature Source	TEMS	
MWPT_NULL_TEMP	MWPT NULL Temperature	0.0	DEGC
	System and Miscellaneous		
PP	Playback Processing	NORMAL	

Format: MWP_SL Vertical Scale: 1" per 60S Graphics File Created: 10-Nov-2009 21:39

OP System Version: 17C0-154

MWP_GUN	17C0-154	MWPT-CA	17C0-154
MWGT-AA	17C0-154		

Input DLIS Files

DEFAULT	PERFO_026LTP	FN:25	PRODUCER	10-Nov-2009 20:28	3277.7 M
---------	--------------	-------	----------	-------------------	----------

Output DLIS Files

DEFAULT	PERFO_028PTP	FN:27	PRODUCER	10-Nov-2009 21:39	
---------	--------------	-------	----------	-------------------	--

Schlumberger

2-1/8" PowerJet Gun – MWPT Shooting Pass

MAXIS Field Log

PERFO2 Operational Summary Listing

Device	Status	Req Depth (M)	Obs Depth (M)	Time Used
Gun	Used	3281.0	3281.0	Tue Nov 10 20:30:54 200

Company: Esso Australia Pty Ltd.

Well: BMA A3

Output DLIS Files

DEFAULT	PERFO_024LUP	FN:23	PRODUCER	10-Nov-2009 20:23	3292.1 M	3223.3 M
---------	--------------	-------	----------	-------------------	----------	----------

OP System Version: 17C0-154

MWP_GUN	17C0-154	MWPT-CA	17C0-154
MWGT-AA	17C0-154		

PIP SUMMARY

Time Mark Every 60 S

Pressure (SGP)
(PSIA)

Tension (TENS)

0 (LBF) 2000

Temperature
(TEMP_MWPT)
(DEGF)

CCL

From CCL to T1

Gamma Ray (GR) (GAPI)

Casing Collar Locator (CCL)

-19 (----- **1**

**Cable
Speed (CS)
(F/HR)**

Temperature (TEMP_MWPT)
(DEGF)

0 (DEGF) 2

Strain Gauge Pressure (SGP)
(PSIA)

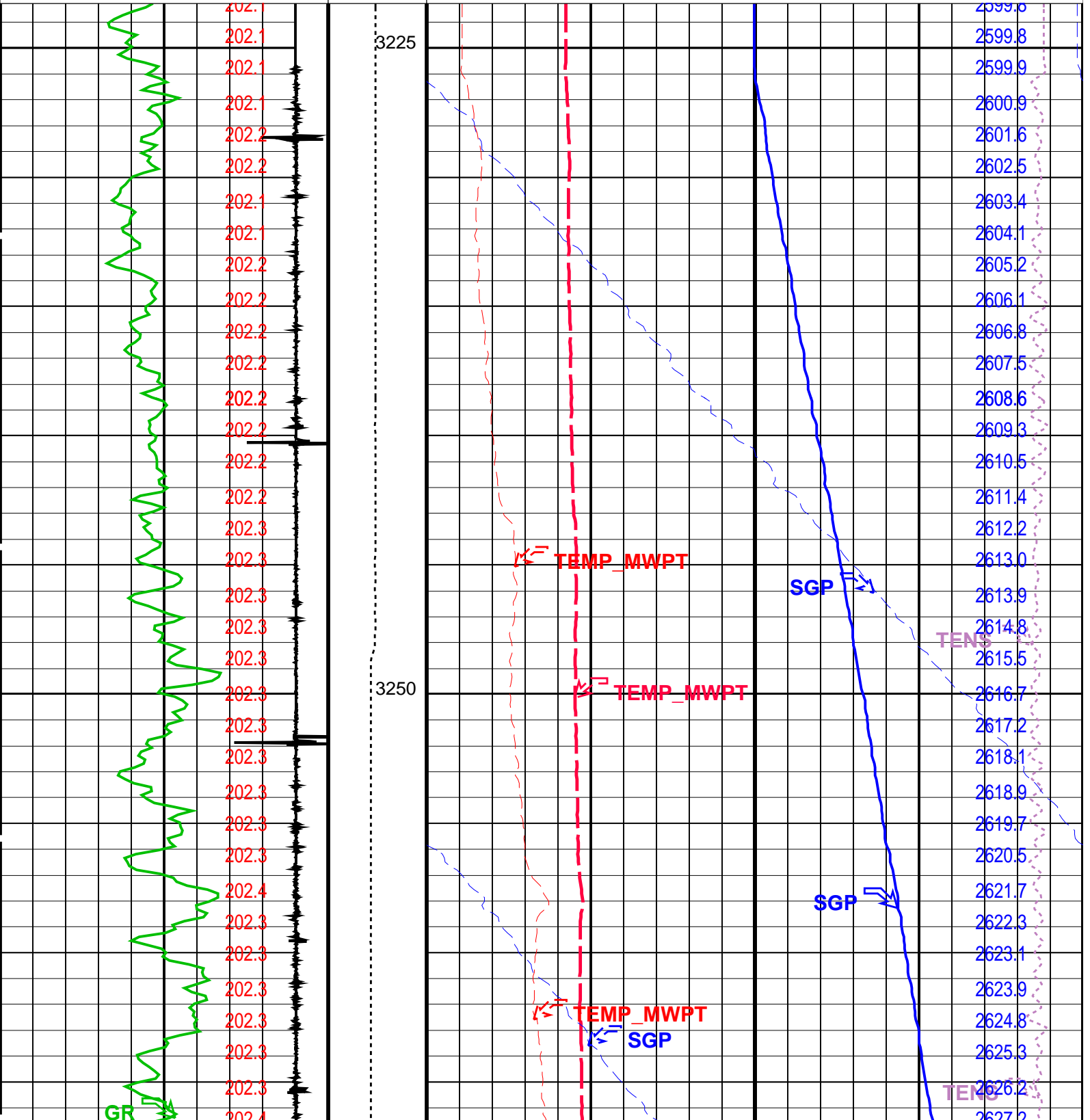
0 (PSIA) 20

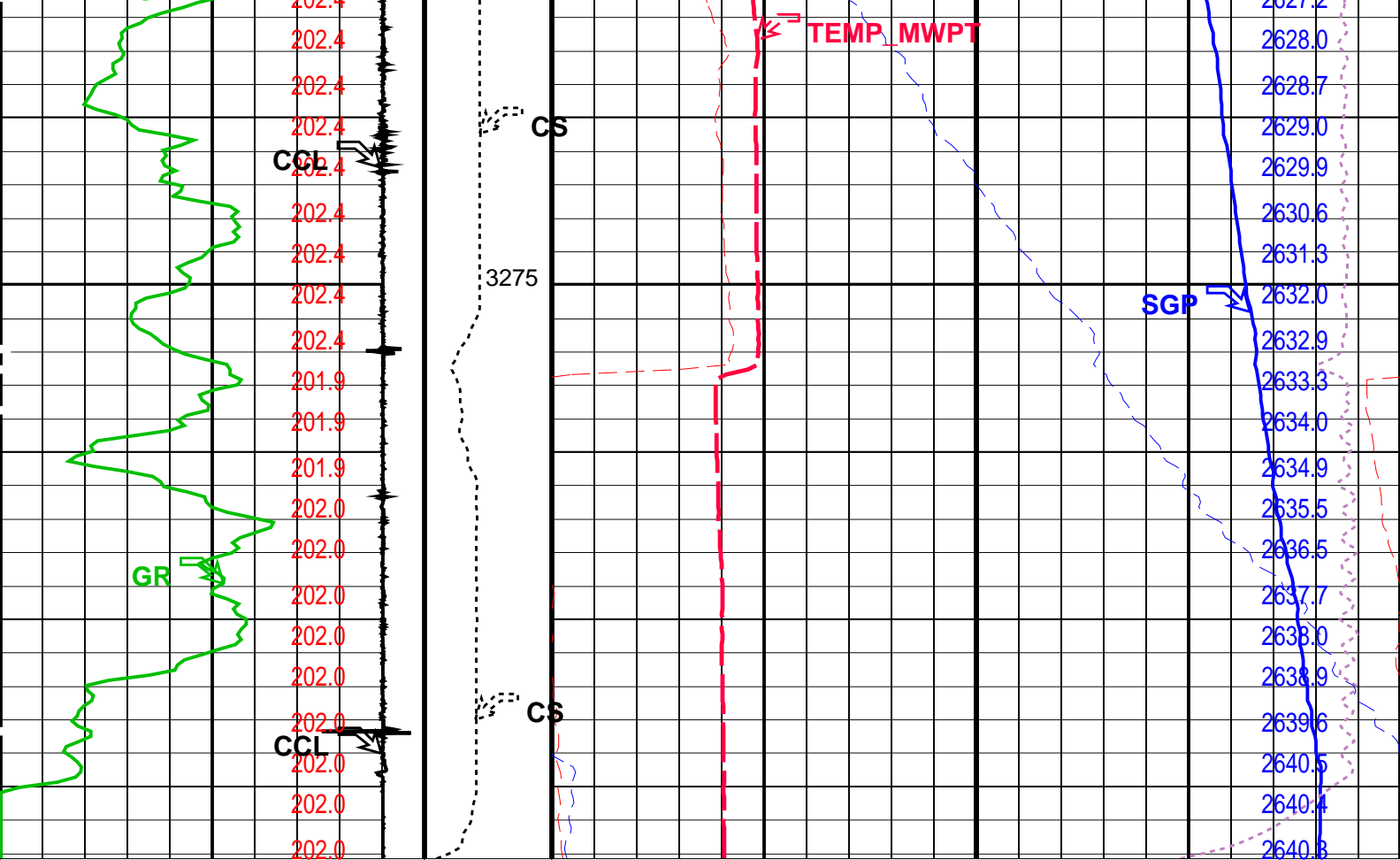
Temperature (TEMP_MWPT)
(DEGF)

200 (DEGF) 210

Strain Gauge Pressure (SGP)

2550	(PSIA)	2650
------	--------	------





Casing Collar Locator (CCL)		Cable Speed (CS)		Strain Gauge Pressure (SGP)	
-19 (----) 1		0 5000		2550 (PSIA) 2650	
Gamma Ray (GR)		Temperature (TEMP_MWPT)		Strain Gauge Pressure (SGP)	
0 (GAPI) 150		200 (DEGF) 210		0 (PSIA) 20	
CCL From CCL to T1		Temperature (TEMP_MWPT)		Tension (TENS)	
Temperature (TEMP_MWPT) (DEGF)		0 (DEGF) 2		0 (LBF) 2000	
				Pressure (SGP) (PSIA)	

PIP SUMMARY

Time Mark Every 60 S

Parameters		
DLIS Name	Description	Value
MWPT-CA: MEASUREMENT WHILE PERFORATING TOOL		
DEVI_FL_CORR	Deviation Angle for Flow Line Correction	0 DEG
FLD	Flow Line Density	1 G/C3
MWPT_NULL_SOURCE	MWPT NULL Temperature Source	TEMS
MWPT_NULL_TEMP	MWPT NULL Temperature	0.0 DEGC

Format: MWP Vertical Scale: 1:200 Graphics File Created: 10-Nov-2009 20:23

OP System Version: 17C0-154			
MWP_GUN	17C0-154	MWPT-CA	17C0-154
MWGT-AA	17C0-154		

Output DLIS Files

DEFAULT

PERFO_024LUP

FN:22

PRODUCER

10-Nov-2009 20:23

Schlumberger

2-1/8" PowerJet Gun – MWPT Correlation Pass

MAXIS Field Log

Company: Esso Australia Pty Ltd.

Well: BMA A3

Output DLIS Files

DEFAULT

PERFO_023LUP

FN:22

PRODUCER

10-Nov-2009 20:14

3292.6 M

3224.0 M

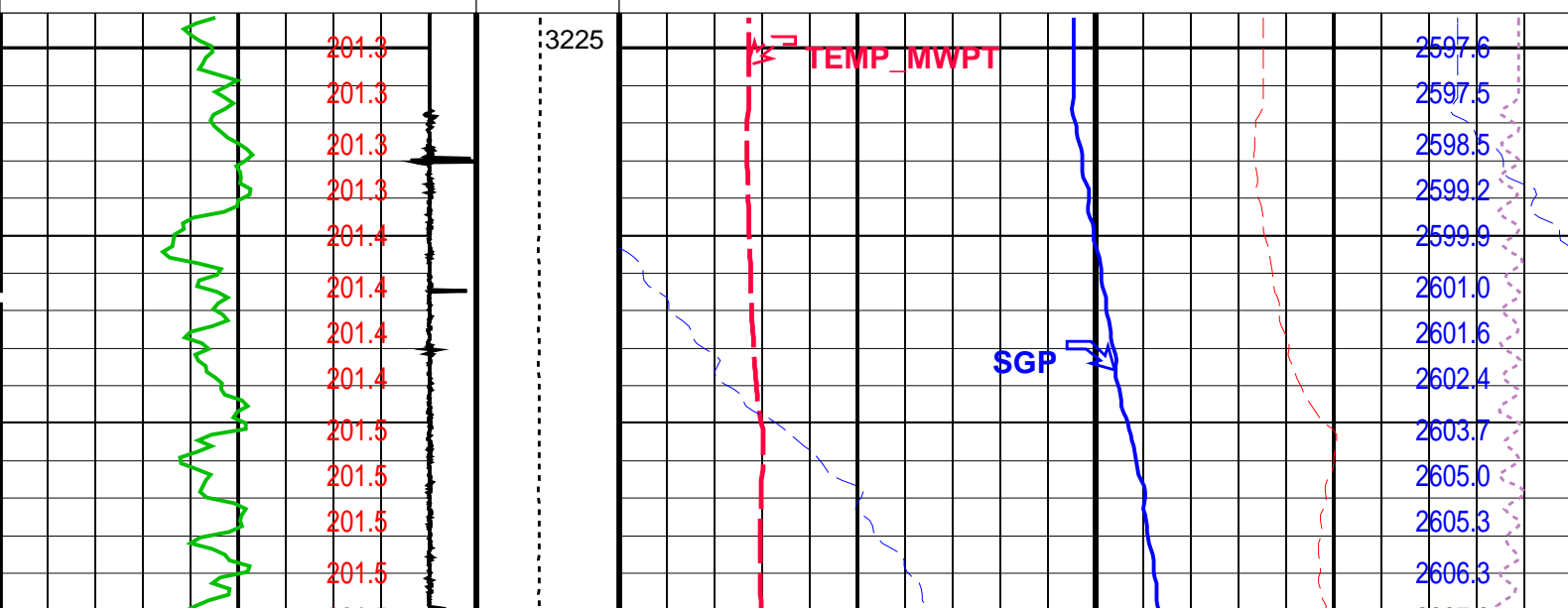
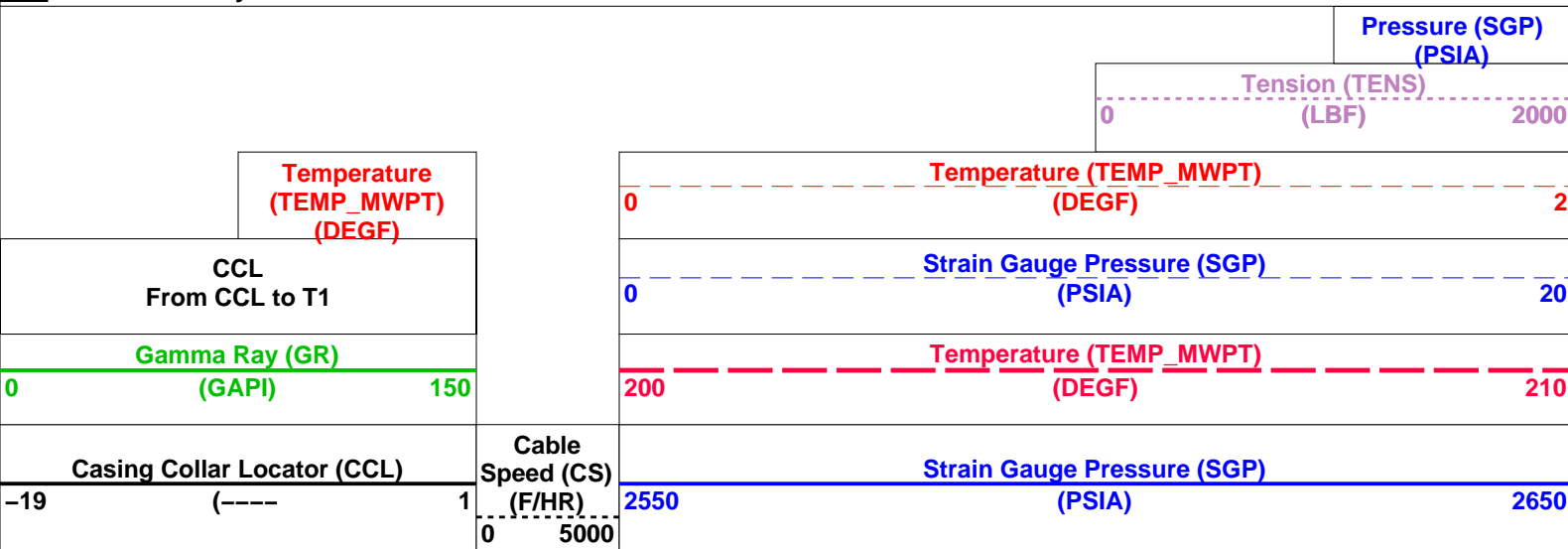
OP System Version: 17C0-154

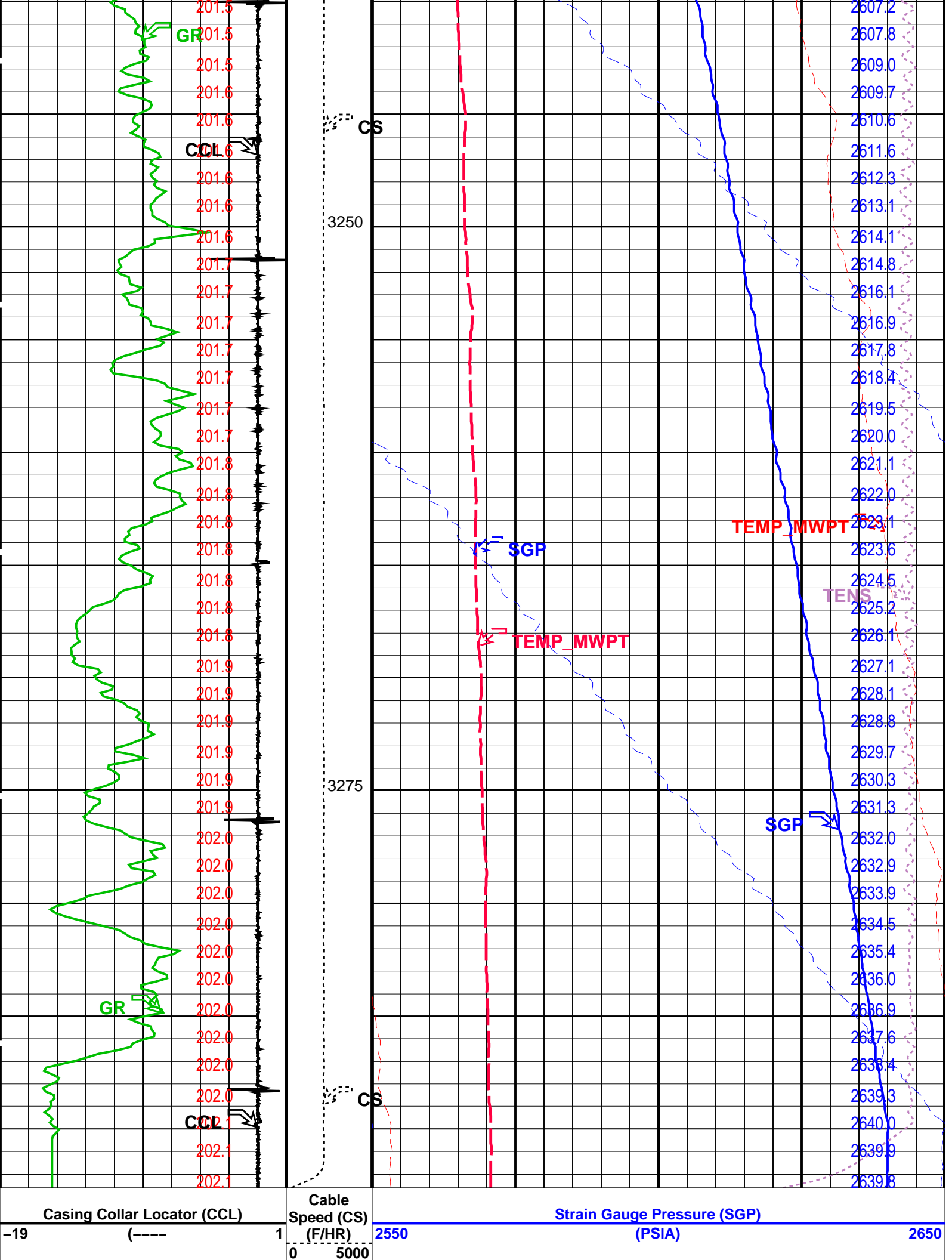
MWP_GUN 17C0-154
MWGT-AA 17C0-154

MWPT-CA 17C0-154

PIP SUMMARY

Time Mark Every 60 S





Gamma Ray (GR)		Temperature (TEMP_MWPT)	
0	(GAPI) 150	200	(DEGF) 210
CCL From CCL to T1		Strain Gauge Pressure (SGP)	
		0	(PSIA) 20
Temperature (TEMP_MWPT) (DEGF)		Temperature (TEMP_MWPT) (DEGF)	
		0	2
		Tension (TENS) (LBF)	
		0	2000
		Pressure (SGP) (PSIA)	


PIP SUMMARY	
	Time Mark Every 60 S

Parameters			
DLIS Name	Description	Value	
MWPT-CA: MEASUREMENT WHILE PERFORATING TOOL			
DEVI_FL_CORR	Deviation Angle for Flow Line Correction	0	DEG
FLD	Flow Line Density	1	G/C3
MWPT_NULL_SOURCE	MWPT NULL Temperature Source	TEMS	
MWPT_NULL_TEMP	MWPT NULL Temperature	0.0	DEGC

Format: MWP	Vertical Scale: 1:200	Graphics File Created: 10-Nov-2009 20:14
-------------	-----------------------	--

OP System Version: 17C0-154			
MWP_GUN	17C0-154	MWPT-CA	17C0-154
MWGT-AA	17C0-154		

Output DLIS Files			
DEFAULT	PERFO_023LUP	FN:22 PRODUCER	10-Nov-2009 20:14

Company:	Esso Australia Pty Ltd.	
Well:	BMA A3	
Field:	Bream A	
Rig :	Prod4 / Crane	
Country:	Australia	
2-1/8" PowerJet MWPT Perforation Record 5" MPBT Posiset Plug Setting Record 9-Nov-2009		