

[illegible]

Company: Esso Australia Pty Ltd.

Well: A-20A  
Field: Bream A  
Rig : Prod4 / Crane

Country: Australia

Prod4 / Crane  
Field: Bream A  
Location: Gippsland  
Well: A-20A  
Company: Esso Australia Pty Ltd.

2 1/8" Phased Powerjet  
7" MPBT Plug  
Setting Record

Gippsland	Elev.: K.B. 32.82 m
Basin	G.L. -59.00 m
Bass Strait	D.F. 32.82 m
Permanent Datum:	M.S.L. _____
Log Measured From:	D.F. _____
Drilling Measured From:	D.F. _____

State : Victoria	Max. Well Deviation 57 deg	Longitude 147 46'15"E	Latitude 038 30'04"S
------------------	----------------------------	-----------------------	----------------------

Logging Date	20-Oct-2008			
Run Number	2 thru 5			
Depth Driller	2227 m			
Schlumberger Depth	2227 m			
Bottom Log Interval	2227 m			
Top Log Interval	2180 m			
Casing Fluid Type	Production Fluids			
Salinity				
Density				
Fluid Level	1195 m			
BIT/CASING/TUBING STRING				
Bit Size	8.500 in			
From	0 m			
To	0 m			
Casing/Tubing Size	7.000 in			
Weight	26 lbm/ft			
Grade	L-80			
From	12.2 m			
To	2309 m			
Maximum Recorded Temperatures	206 degF			
Logger On Bottom	20-Oct-2008		17:00	
Unit Number	Location	889	Prod4 / Ausl	
Recorded By	G Wright & S Gilbert.			
Witnessed By	B White & JD.			

			Run 1
Oil Density			
Water Salinity			
Gas Gravity			
Bo			
Bw			
1/Bg			
Bubble Point Pressure			
Bubble Point Temperature			
Solution GOR			
Maximum Deviation			57 deg
CEMENTING DATA			
Primary/Squeeze			Primary
Casing String No			
Lead Cement Type			
Volume			
Density			
Water Loss			
Additives			
Tail Cement Type			
Volume			
Density			
Water Loss			
Additives			
Expected Cement Top			
Logging Date			
Run Number			
Depth Driller			
Schlumberger Depth			
Bottom Log Interval			
Top Log Interval			
Casing Fluid Type			
Salinity			
Density			
Fluid Level			
BIT/CASING/TUBING STRING			
Bit Size			
From			
To			
Casing/Tubing Size			
Weight			
Grade			
From			
To			
Maximum Recorded Temperatures			
Logger On Bottom		Time	
Unit Number	Location		
Recorded By			
Witnessed By			

## DEPTH SUMMARY LISTING

Date Created: 15-OCT-2008 16:00:40

### Depth System Equipment

Depth Measuring Device	Tension Device	Logging Cable
Type: IDW-EB Serial Number: 6373 Calibration Date: 04-JAN-2007 Calibrator Serial Number: 9 Calibration Cable Type: 2-23ZT Wheel Correction 1: -2 Wheel Correction 2: -4	Type: PSDS/OSDS Serial Number: 325357 Calibration Date: 20-Sep-2008 Calibrator Serial Number: 1174 Calibration Gain: 0.94 Calibration Offset: 0.00	Type: 2-32ZT Serial Number: 208196 Length: 7315 M Conveyance Method: Wireline Rig Type: Offshore_Fixed

### Depth Control Parameters

Log Sequence:	Subsequent Log In the Well
Reference Log Name:	Solar Composite Log
Reference Log Run Number:	
Reference Log Date:	.

### Depth Control Remarks

1. IDW used as primary depth control.
2. Z-chart used as secondary backup
3.
4.
5.
6.

#### DISCLAIMER

THE USE OF AND RELIANCE UPON THIS RECORDED-DATA BY THE HEREIN NAMED COMPANY (AND ANY OF ITS AFFILIATES, PARTNERS, REPRESENTATIVES, AGENTS, CONSULTANTS AND EMPLOYEES) IS SUBJECT TO THE TERMS AND CONDITIONS AGREED UPON BETWEEN SCHLUMBERGER AND THE COMPANY, INCLUDING: (a) RESTRICTIONS ON USE OF THE RECORDED-DATA; (b) DISCLAIMERS AND WAIVERS OF WARRANTIES AND REPRESENTATIONS REGARDING COMPANY'S USE OF AND RELIANCE UPON THE RECORDED-DATA; AND (c) CUSTOMER'S FULL AND SOLE RESPONSIBILITY FOR ANY INFERENCE DRAWN OR DECISION MADE IN CONNECTION WITH THE USE OF THIS RECORDED-DATA.

OTHER SERVICES1
OS1: RST-C Survey
OS2:
OS3:
OS4:
OS5:
REMARKS: RUN NUMBER 1
Log correlated to ExxonMobil composite supplied with logging program
Maximum well deviation 57 degrees at 869.3m MDKB.
Objectives: Perforate the well over the interval 2216.5m to 2218.5m MDKB using a 2m 2 1/8" Phased Powerjet gun .
Set a 7" Posiset Plug with top of Seal @ 2223m MDKB and dump approx 1m of cement on top .
Hud Tagged @ 2227m MDKB
Gun # 1
Top Shot @ 2216.5 m MDKB Before Gun-- SBHP: 2617.6 psia SBHT: 203.3 degf
CCL to Top Shot = 3.5 m After Gun-- SBHP: 2616.2 psia SBHT: 203.8 degf

CCL Stop Depth = 2213 m MDKB					
CCL to Bottom of Dummy Plug = 3.6m					
7" Posiset Plug .					
Top of Seal @ 2223 m MDKB					
CCL top Top of Seal = 6.9 m					
CCL Stop Depth = 2216.1 m MDKB					
Schlumberger Crew : J Light , G Martin,C Shiells,N Simmons.					
RUN 1					
SERVICE ORDER #:		AUSL08602238			
PROGRAM VERSION:		16C0-147			
FLUID LEVEL:		1195 m			
LOGGED INTERVAL	START	STOP	LOGGED INTERVAL	START	STOP
EQUIPMENT DESCRIPTION					
RUN 1			RUN 2		
SURFACE EQUIPMENT			SURFACE EQUIPMENT		
MWPM-AA 3008			MPBM		
DOWNHOLE EQUIPMENT			DOWNHOLE EQUIPMENT		
SWBS-B 789		10.83	SWBS-B 785		13.67
SWBS-B 788		10.15	SWBS-B 786		12.98
SWBS-B 787		9.46	SWBS-B 787		12.30
SWBS-B 786		8.78	SWBS-B 788		11.61
SWBS-B 785		8.09	SWBS-B 789		10.93
SWHS-A 759		7.40	SWHA-A 759		10.24
MWGT-AA 69		7.07	CCL-L 9851		TOOL ZERO9.90
MWPG-AA 24029					
MWGH-AA 69					
MWPG GR		2.41			
MWPT-CA 74		6.10	MPSU-BA 20		9.44
MWPH-AA 74					
MWPS-AA 74					
CCL SMWP Pres SMWP Temp Tension		TOOL ZERO			

TOOL BOTTOM

MAXIMUM STRING DIAMETER 2.13 IN  
MEASUREMENTS RELATIVE TO TOOL ZERO  
ALL LENGTHS IN METERS

3.28

2.82

2.41

2.01

AH-121 41  
AH-121 41

AH-SAH-G 1035  
AH-SAH-G 1035

AH-ESIC 0606252  
AH-ESIC 606252

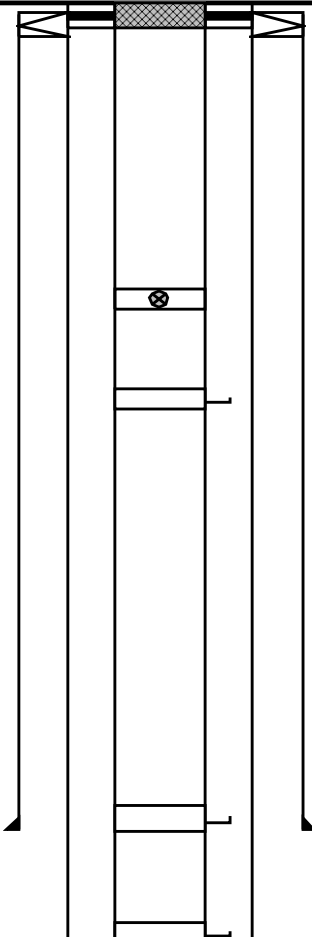
MWP\_GUN  
GUN-2 1/8" Powerjet Gun 1

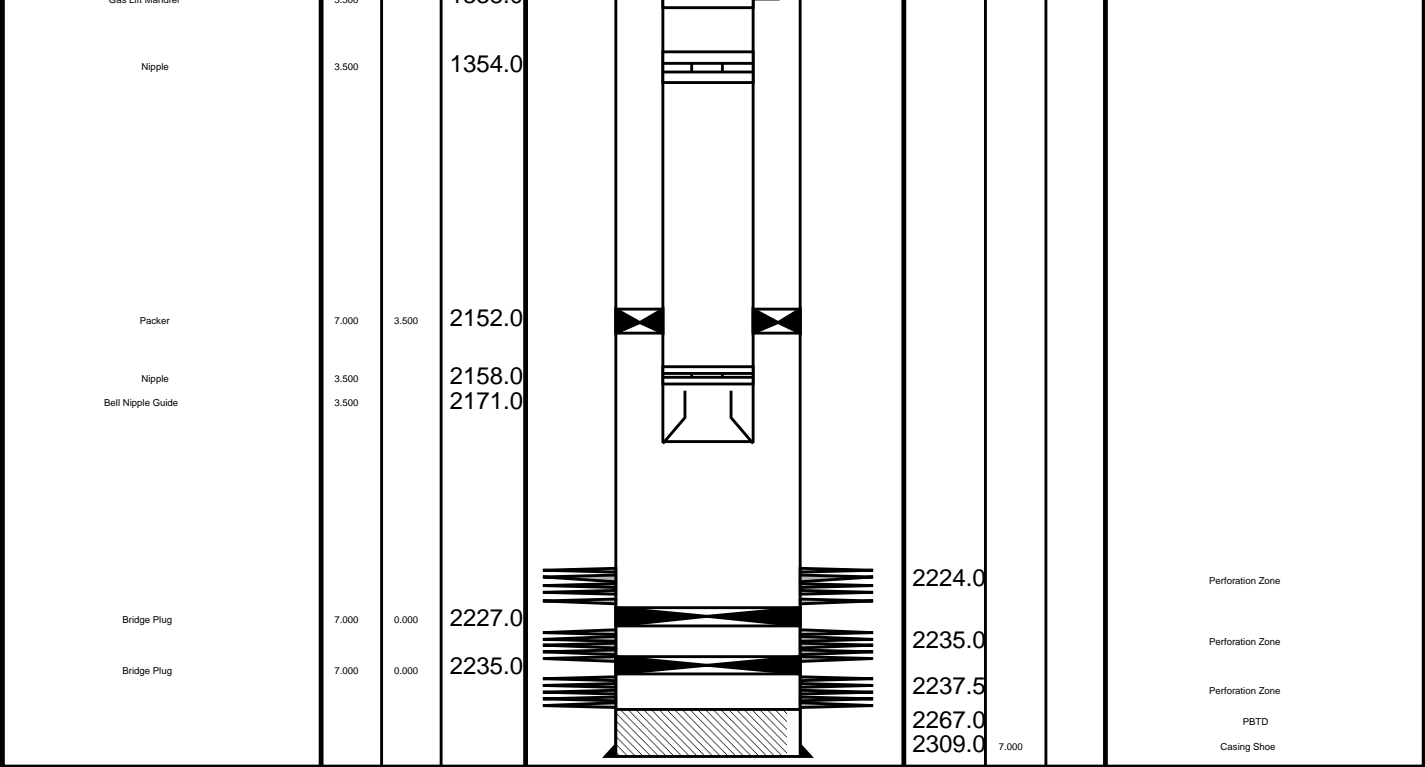
TOOL BOTTOM

MAXIMUM STRING DIAMETER 2.13 IN  
MEASUREMENTS RELATIVE TO TOOL ZERO  
ALL LENGTHS IN METERS

3.20

MPEX-DA 7" 26 lb/ft Posiset Plug  
MPEX-DA

Production String	(in)		(m)	Well Schematic	(m)	(in)		Casing String
	OD	ID	MD		MD	OD	ID	
Tubing	3.500		11.0		12.9	10.750		Casing String
Tubing Hanger	7.000	3.500	10.0		12.2	7.000		Casing String
					12.2	10.750	7.000	Liner Hanger
Shut-in Valve	3.500		450.0					
Gas Lift Mandrel	3.500		595.0					
Gas Lift Mandrel	3.500		1154.0			1123.1	10.750	
Gas Lift Mandrel	3.500		1338.0					



# Job Events Summary

MAXIS Field Log

## Schlumberger Job Event Summary

	Time	Elapsed Time	Depth (M)	File
Log Pass (up)	20-Oct-2008 17:37	000:07	2215.3 - 2170.6	PERFO_018LUP
Log Pass (up)	20-Oct-2008 17:45	000:28	2220.5 - 2172.3	PERFO_019LUP
Station Log	20-Oct-2008 17:49	000:12	2213.0 - 1.7	PERFO_020LTP
Log Pass (up)	20-Oct-2008 20:11	000:12	2224.4 - 2116.1	PERFO_026LUP
Log Pass (up)	20-Oct-2008 23:12	000:04	2201.0 - 2171.2	CCL_044LUP
Simulated Log	20-Oct-2008 23:26	000:26		CCL_045LUP
Log Pass (up)	20-Oct-2008 23:53	000:06	2216.0 - 2169.1	CCL_046LUP
Log Pass (up)	21-Oct-2008 2:13	000:08	2212.2 - 2170.3	PERFO_053LUP
Log Pass (up)	21-Oct-2008 3:25	000:08	2212.7 - 2170.0	PERFO_056LUP

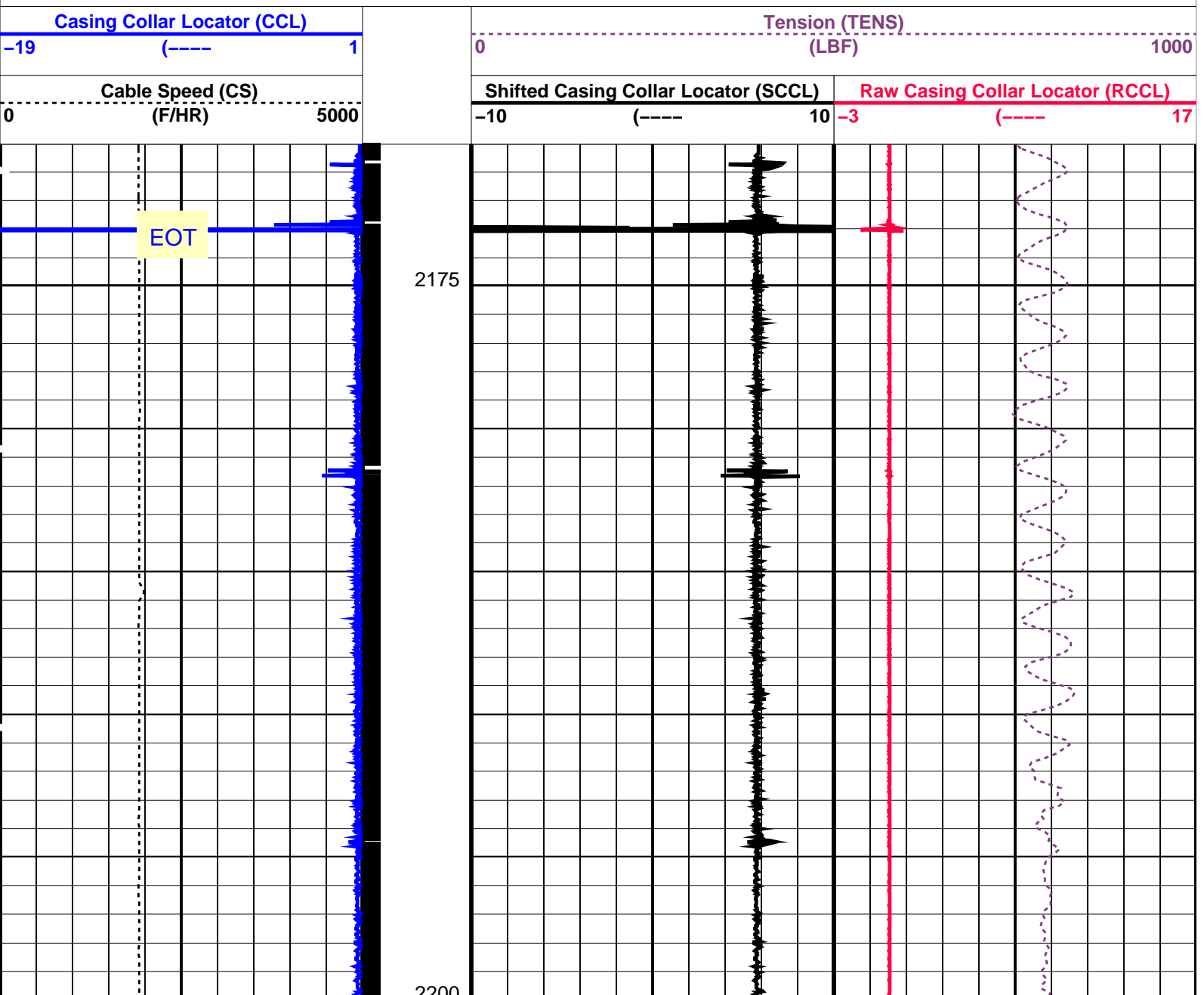


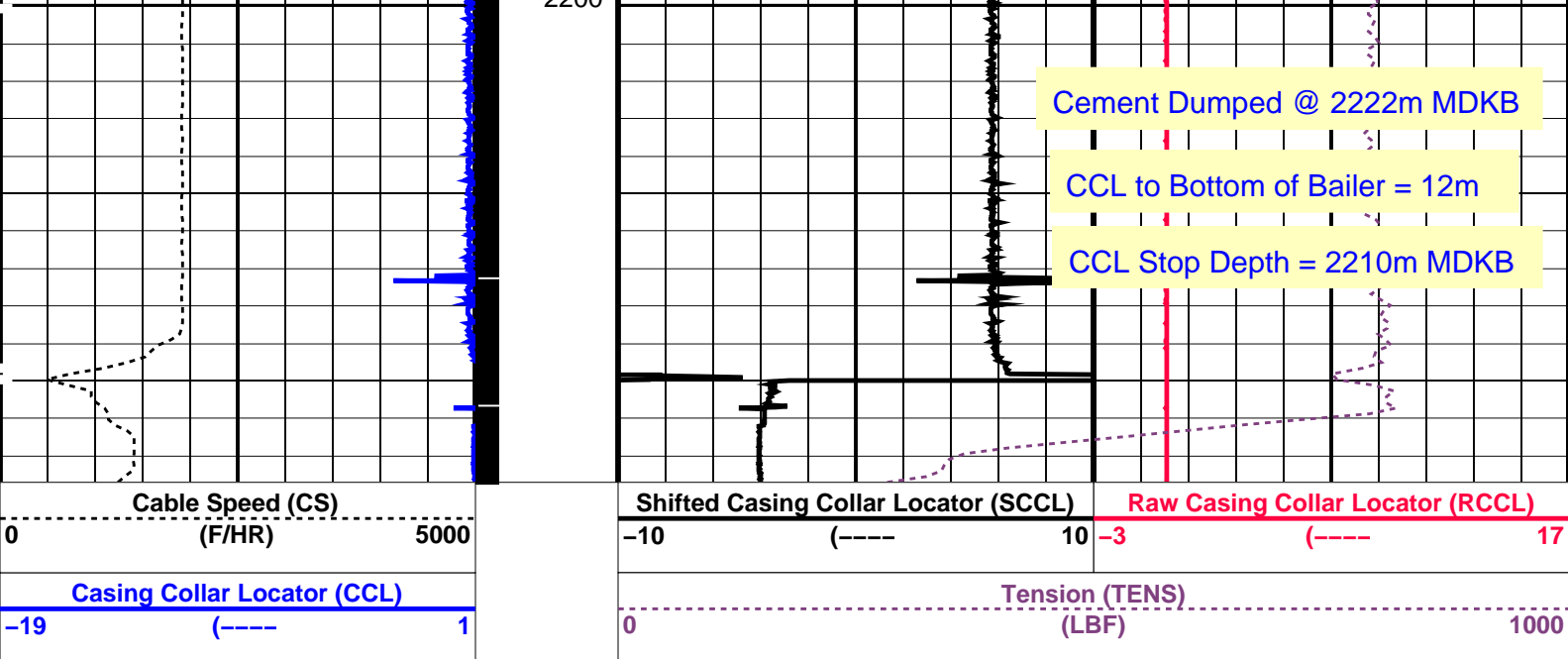
## Output DLIS Files

**OP System Version: 16C0-147**  
**MCM**

## PIP SUMMARY

**Time Mark Every 60 S**





PIP SUMMARY

└─ Casing Collars

Time Mark Every 60 S

Parameters

DLIS Name	Description	Value
CCLD	CCL-L: Casing Collar Locator	12 IN
CCLT	CCL reset delay	0.3 V
	CCL Detection Level	

Format: PERFO\_1 Vertical Scale: 1:200

Graphics File Created: 21-Oct-2008 03:25

OP System Version: 16C0-147

MCM

SHM\_GUN 16C0-147 CCL-L 16C0-147

Output DLIS Files

DEFAULT PERFO\_056LUP FN:54 PRODUCER 21-Oct-2008 03:25

Schlumberger

Water Dump Pass

MAXIS Field Log

Output DLIS Files

DEFAULT PERFO\_053LUP FN:51 PRODUCER 21-Oct-2008 02:13 2212.2 M 2170.3 M

OP System Version: 16C0-147

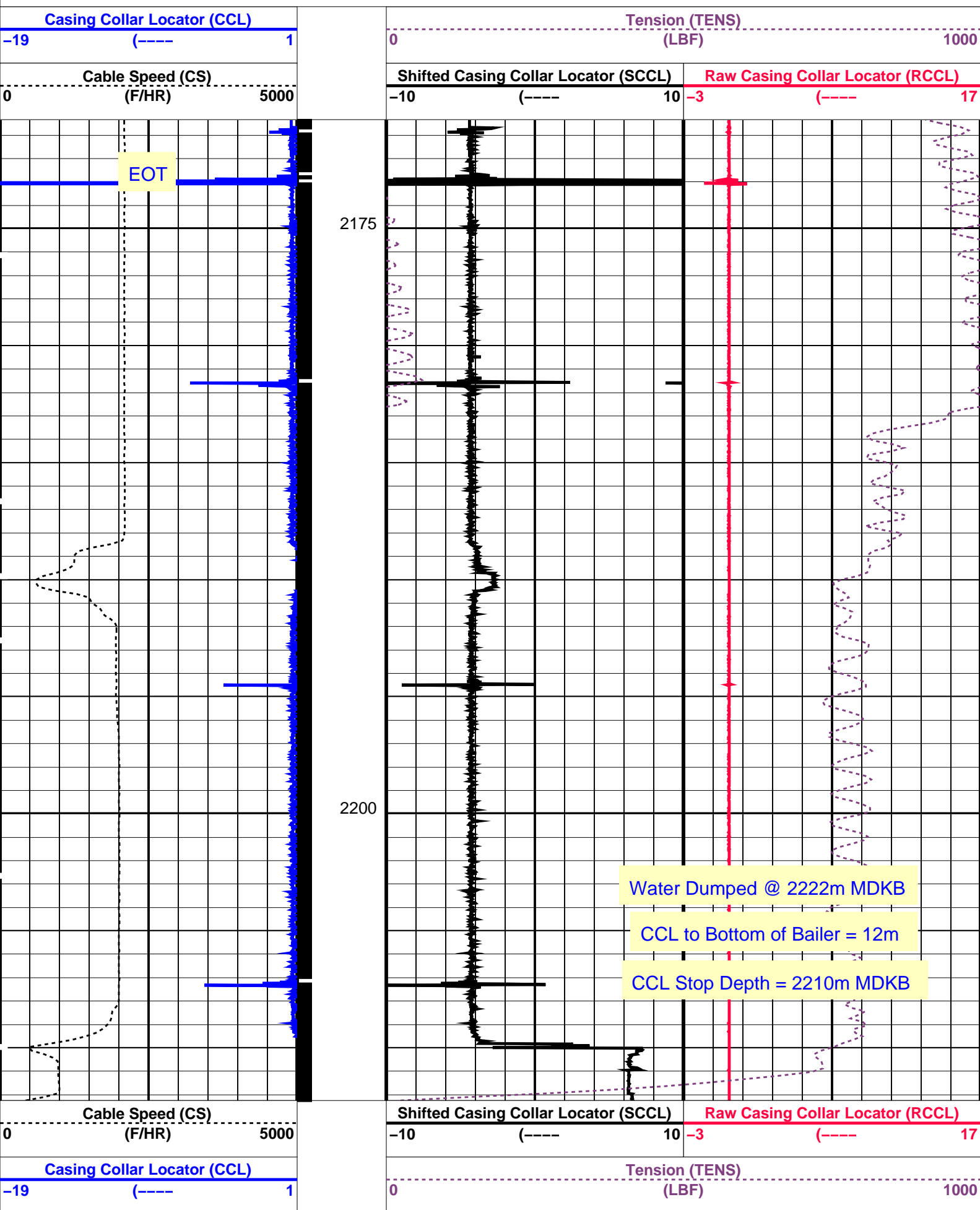
MCM

SHM\_GUN 16C0-147 CCL-L 16C0-147

PIP SUMMARY

└─ Casing Collars





PIP SUMMARY

Time Mark Every 60 S

## Parameters

DLIS Name	Description	Value
-----------	-------------	-------

CCLD	CCL-L: Casing Collar Locator	12 IN
CCLT	CCL reset delay	0.3 V
	CCL Detection Level	

Format: PERFO\_1 Vertical Scale: 1:200

Graphics File Created: 21-Oct-2008 02:13

OP System Version: 16C0-147

MCM

SHM_GUN	16C0-147	CCL-L	16C0-147
---------	----------	-------	----------

## Output DLIS Files

DEFAULT	PERFO_053LUP	FN:51	PRODUCER	21-Oct-2008 02:13
---------	--------------	-------	----------	-------------------

Schlumberger

7" 26lb/ft Posiset Plug  
Top of Seal @ 2223m MDKB

MAXIS Field Log

## Output DLIS Files

DEFAULT	CCL_045LUP	FN:43	PRODUCER	20-Oct-2008 23:26	12192.0 M	11797.9 M
---------	------------	-------	----------	-------------------	-----------	-----------

OP System Version: 16C0-147

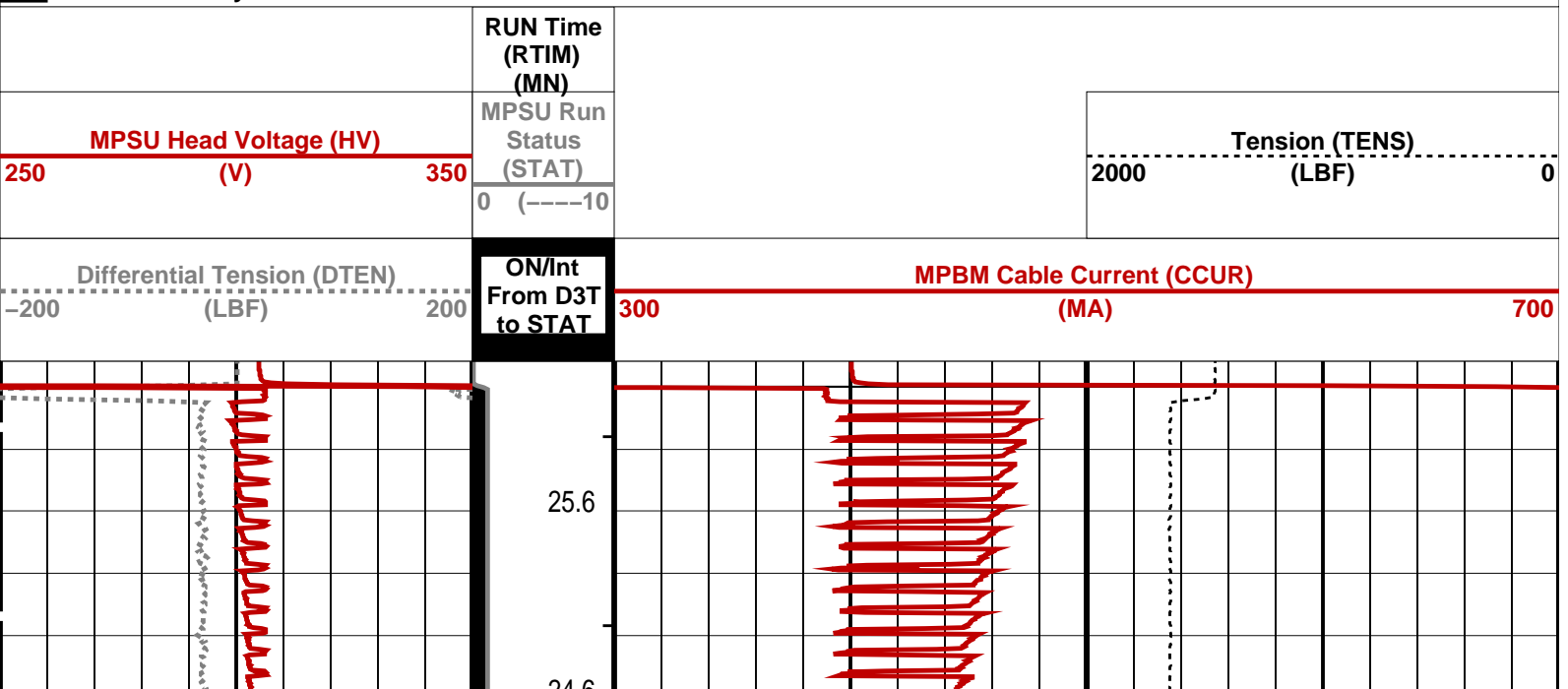
MCM

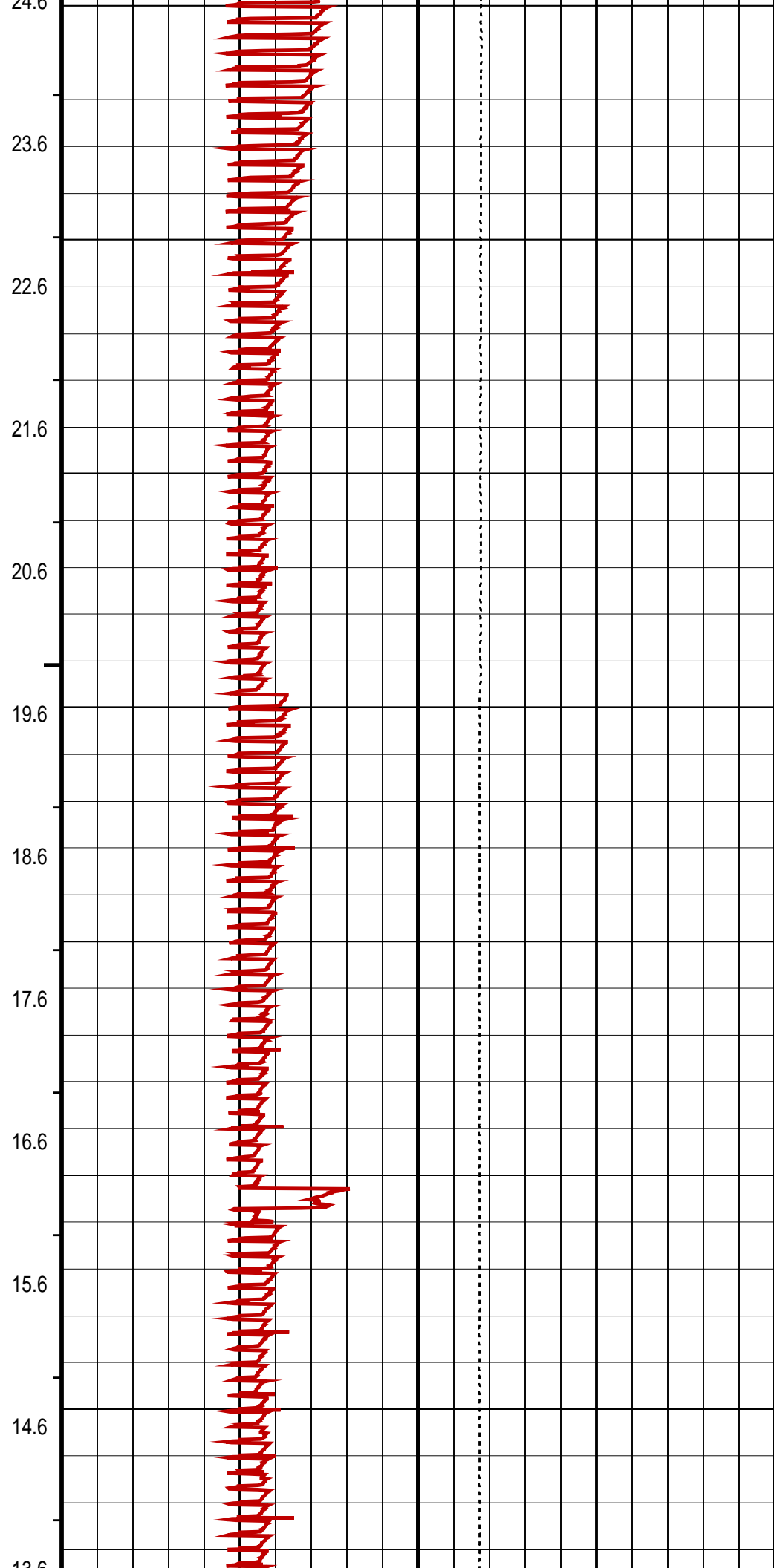
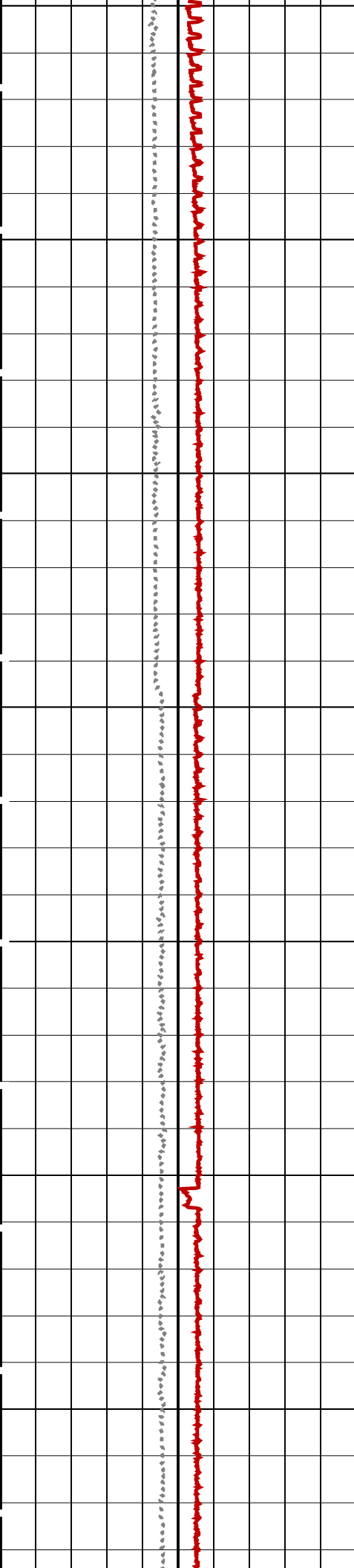
MPEX-DA	16C0-147	MPSU-BA	16C0-147
CCL-L	16C0-147		

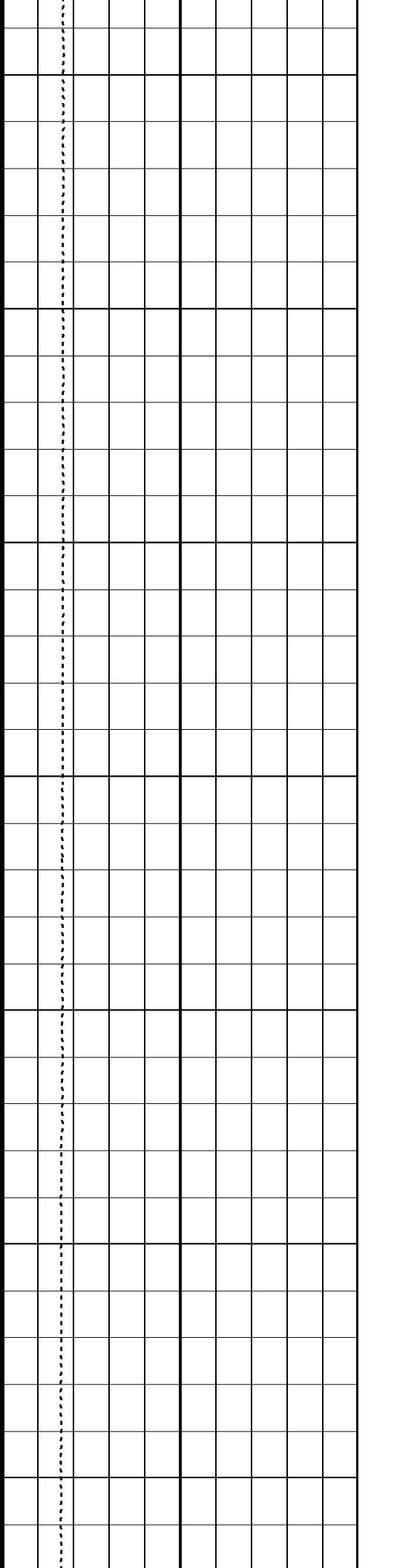
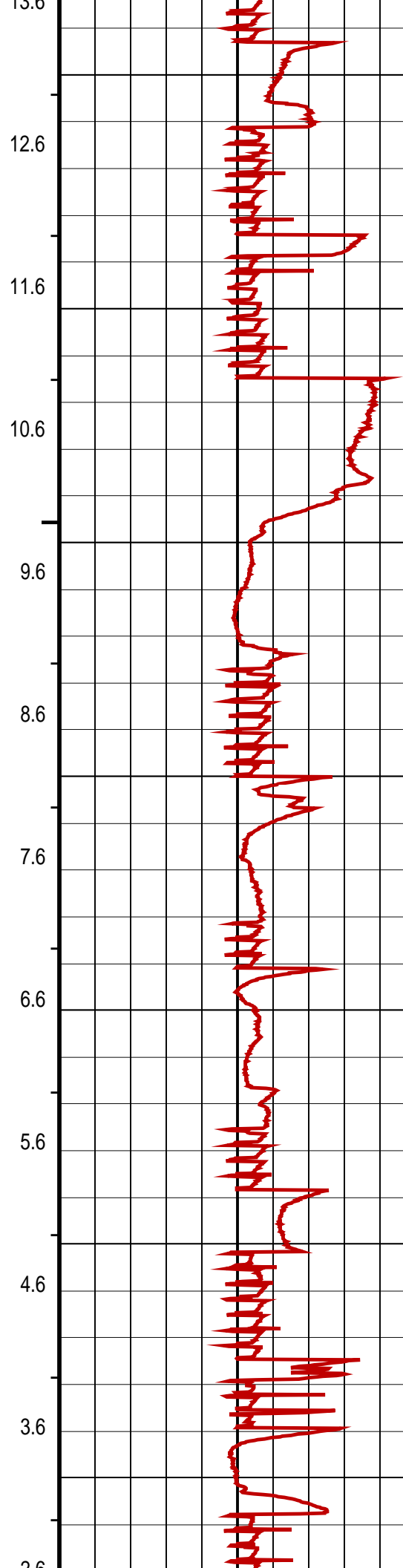
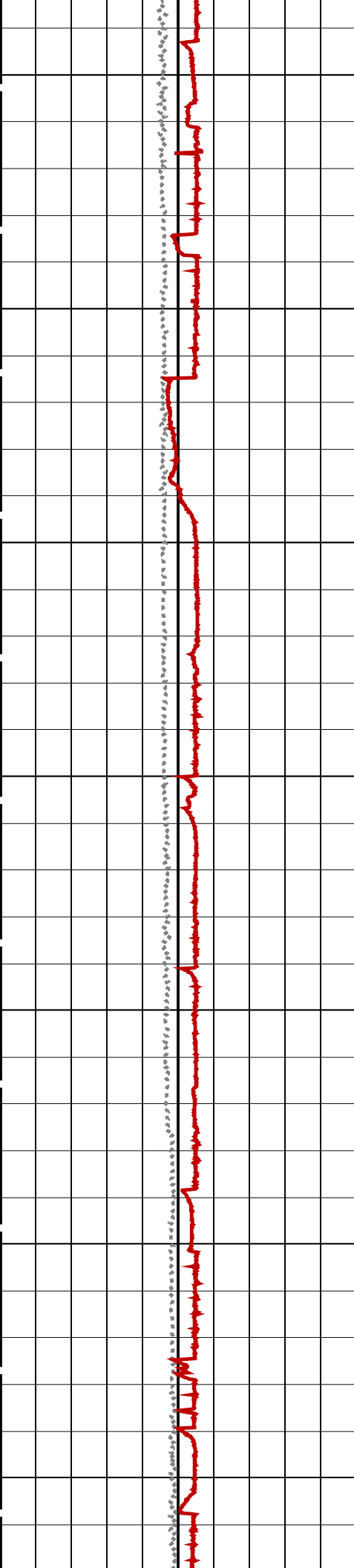
## PIP SUMMARY

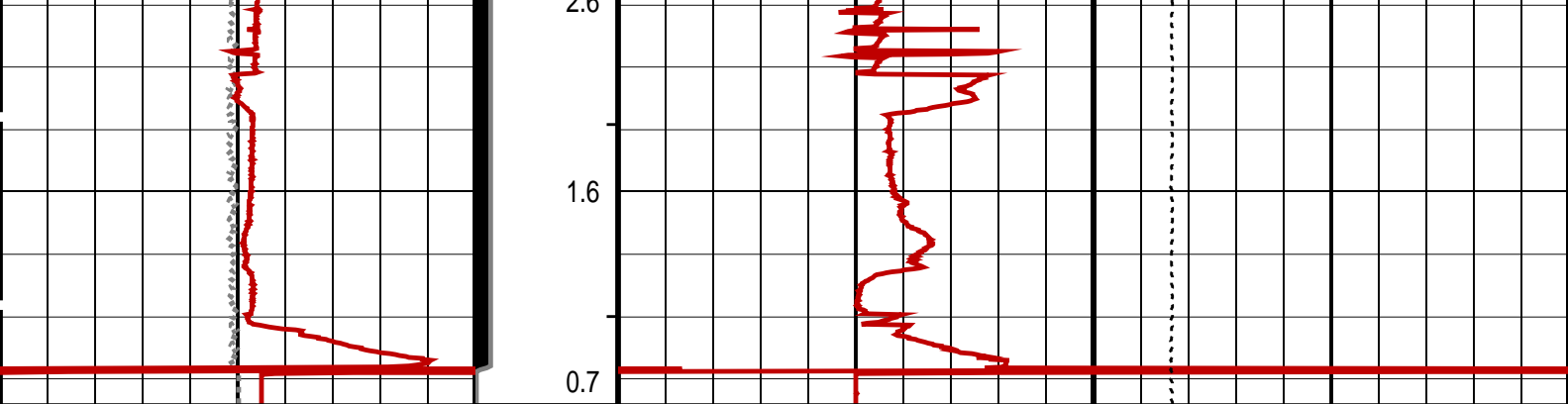
→ MPSU Run Time Every 1 MN  
→ MPSU Run Time Every 10 MN

Time Mark Every 60 S









Differential Tension (DTEN) (LBF)	ON/Int From D3T to STAT	MPBM Cable Current (CCUR) (MA)	Tension (TENS) (LBF)
-200200	300700	20000	
MPSU Head Voltage (HV) (V)	MPSU Run Status (STAT)		
250350	0 (----10		
	RUN Time (RTIM) (MN)		

PIP SUMMARY

- MPSU Run Time Every 1 MN
- MPSU Run Time Every 10 MN

Time Mark Every 60 S

Parameters

DLIS Name	Description	Value
MPSU-BA: MECHANICAL PLUGBACK SETTING UNIT IPUMP	Intensifier Pump	TRUE
Format: MPBT	Vertical Scale: 1:600	Graphics File Created: 20-Oct-2008 23:26

OP System Version: 16C0-147

MCM

MPEX-DA	16C0-147	MPSU-BA	16C0-147
CCL-L	16C0-147		

Output DLIS Files

DEFAULT	CCL_045LUP	FN:43	PRODUCER	20-Oct-2008 23:26
---------	------------	-------	----------	-------------------

Schlumberger

Log Away From Plug Setting

MAXIS Field Log

Output DLIS Files

DEFAULT	CCL_046LUP	FN:44	PRODUCER	20-Oct-2008 23:53	2216.0 M	2169.1 M
---------	------------	-------	----------	-------------------	----------	----------

OP System Version: 16C0-147

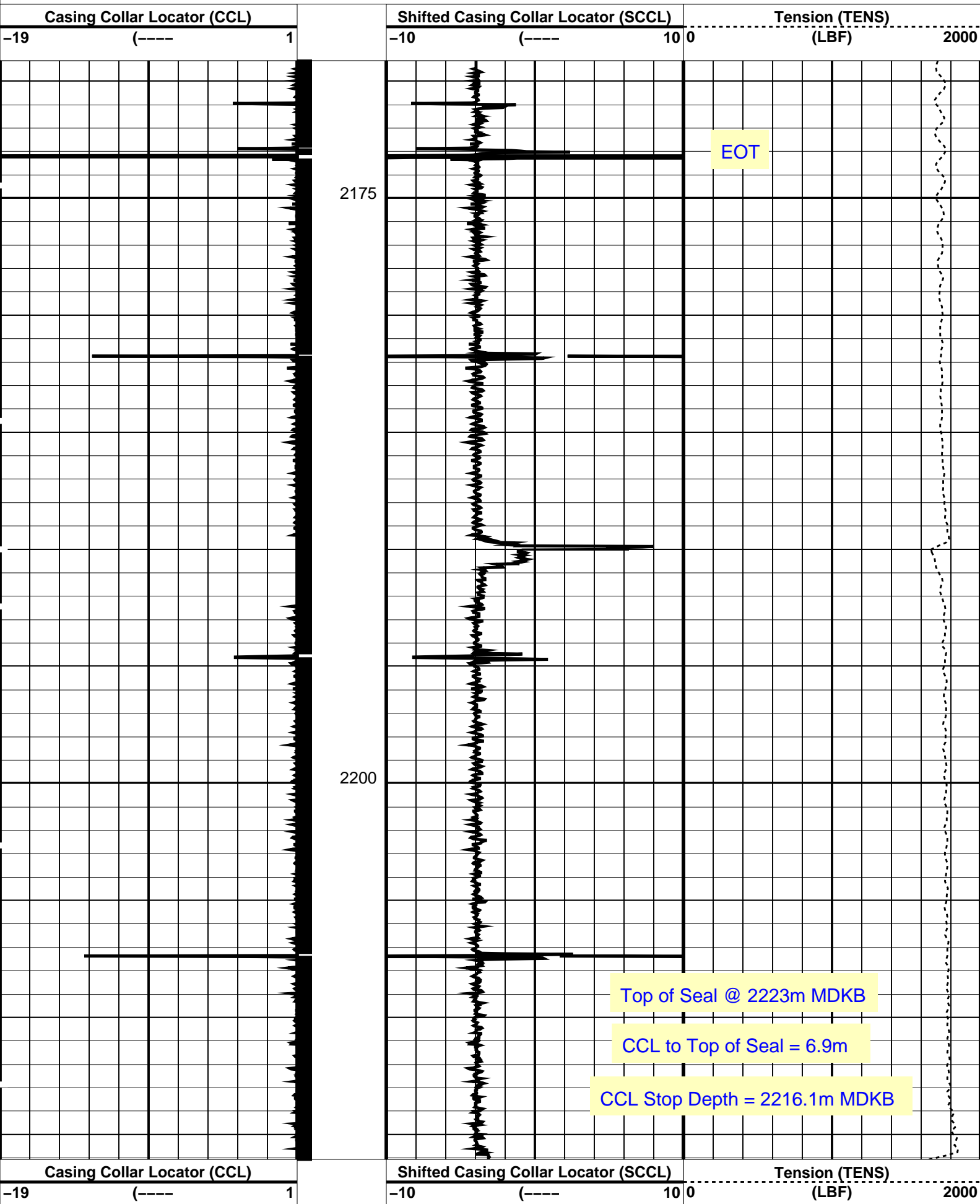
MCM

MPEX-DA	16C0-147	MPSU-BA	16C0-147
CCL-L	16C0-147		

PIP SUMMARY

Casing Collars

Time Mark Every 60 S



PIP SUMMARY

Time Mark Every 60 S

Casing Collars

Parameters

DLIS Name	Description	Value
CCL-L	Casing Collar Locator	
CCLD	CCL reset delay	12 IN
CCLT	CCL Detection Level	0.3 V

Format: PERFO    Vertical Scale: 1:200    Graphics File Created: 20-Oct-2008 23:53

OP System Version: 16C0-147

MCM

MPEX-DA    16C0-147    MPSU-BA    16C0-147

CCL-L    16C0-147

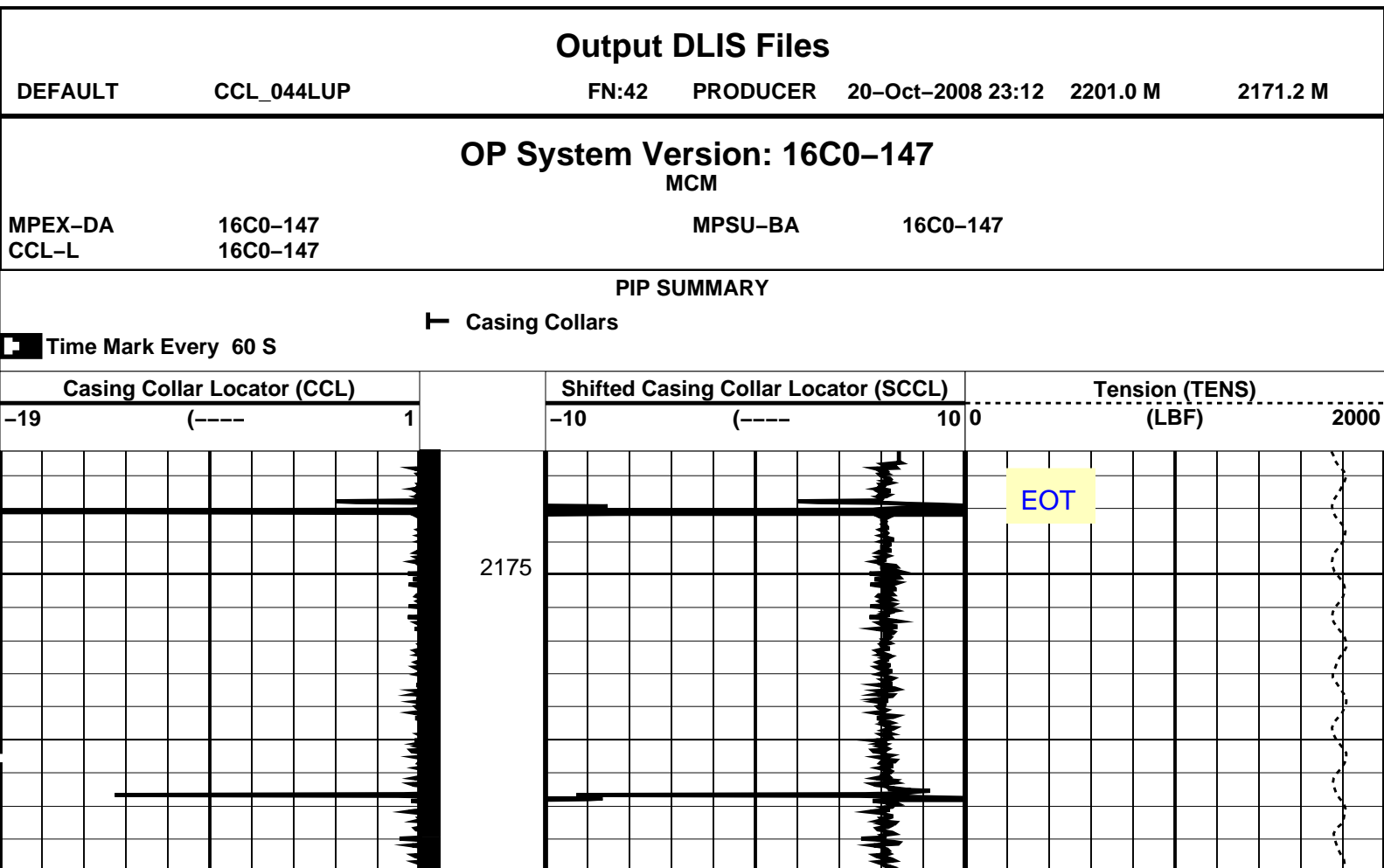
Output DLIS Files

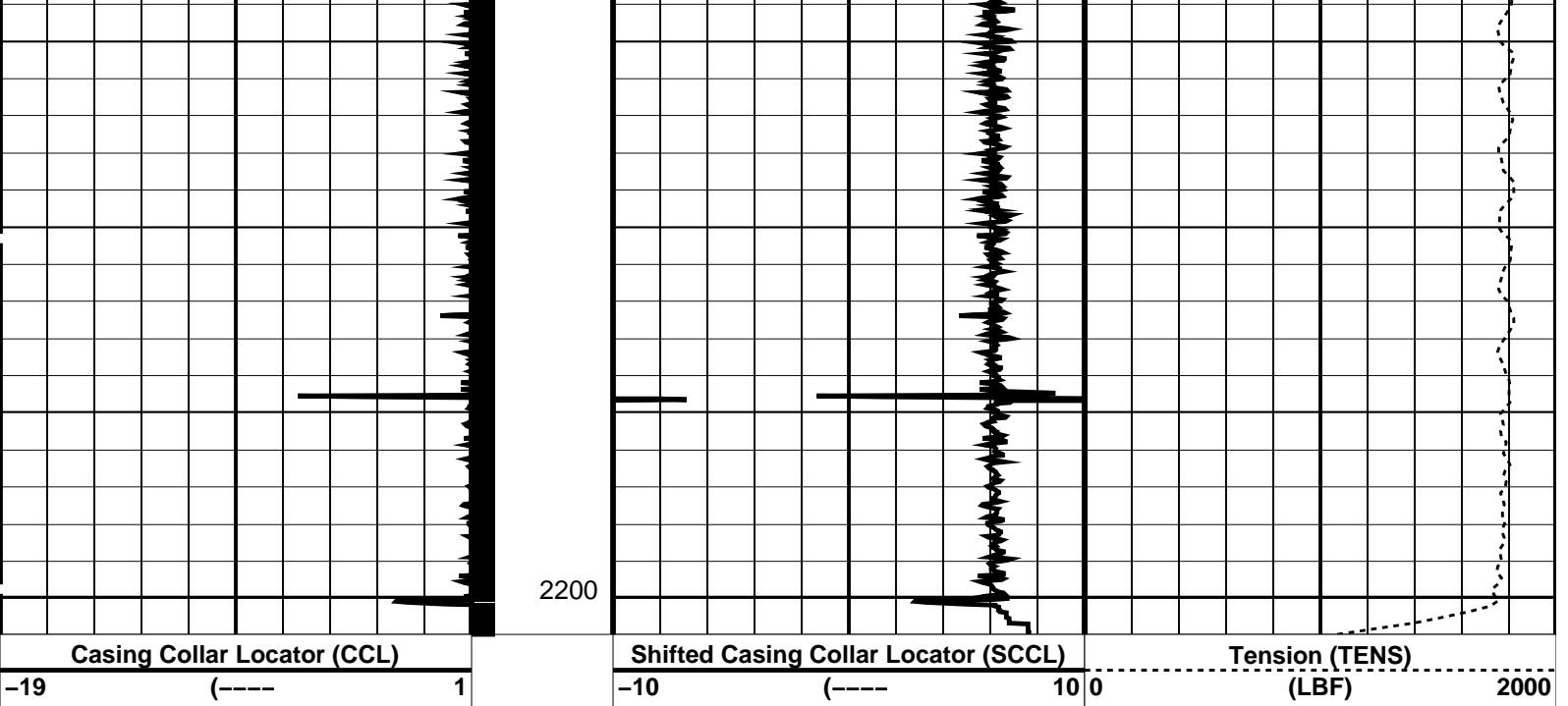
DEFAULT    CCL\_046LUP    FN:44    PRODUCER    20-Oct-2008 23:53

Schlumberger

Plug Correlation Pass

MAXIS Field Log





### PIP SUMMARY

Time Mark Every 60 S



Casing Collars

### Parameters

DLIS Name	Description	Value
CCLD	CCL-L: Casing Collar Locator	12 IN
CCLT	CCL reset delay	0.3 V
	CCL Detection Level	

Format: PERFO Vertical Scale: 1:200 Graphics File Created: 20-Oct-2008 23:12

### OP System Version: 16C0-147

MCM

MPEX-DA 16C0-147 MPSU-BA 16C0-147  
CCL-L 16C0-147

### Output DLIS Files

DEFAULT CCL\_044LUP FN:42 PRODUCER 20-Oct-2008 23:12

Schlumberger

2.13" Dummy Plug Pass

MAXIS Field Log

Company: Esso Australia Pty Ltd. Well: A-20A

### Input DLIS Files

DEFAULT PERFO\_026LUP FN:24 PRODUCER 20-Oct-2008 20:11 2224.4 M 2116.1 M

### Output DLIS Files

DEFAULT PERFO\_028PUP FN:26 PRODUCER 20-Oct-2008 20:25 2232.8 M 2122.0 M



OP System Version: 16C0-147

MCM

MWPT-CA

16C0-147

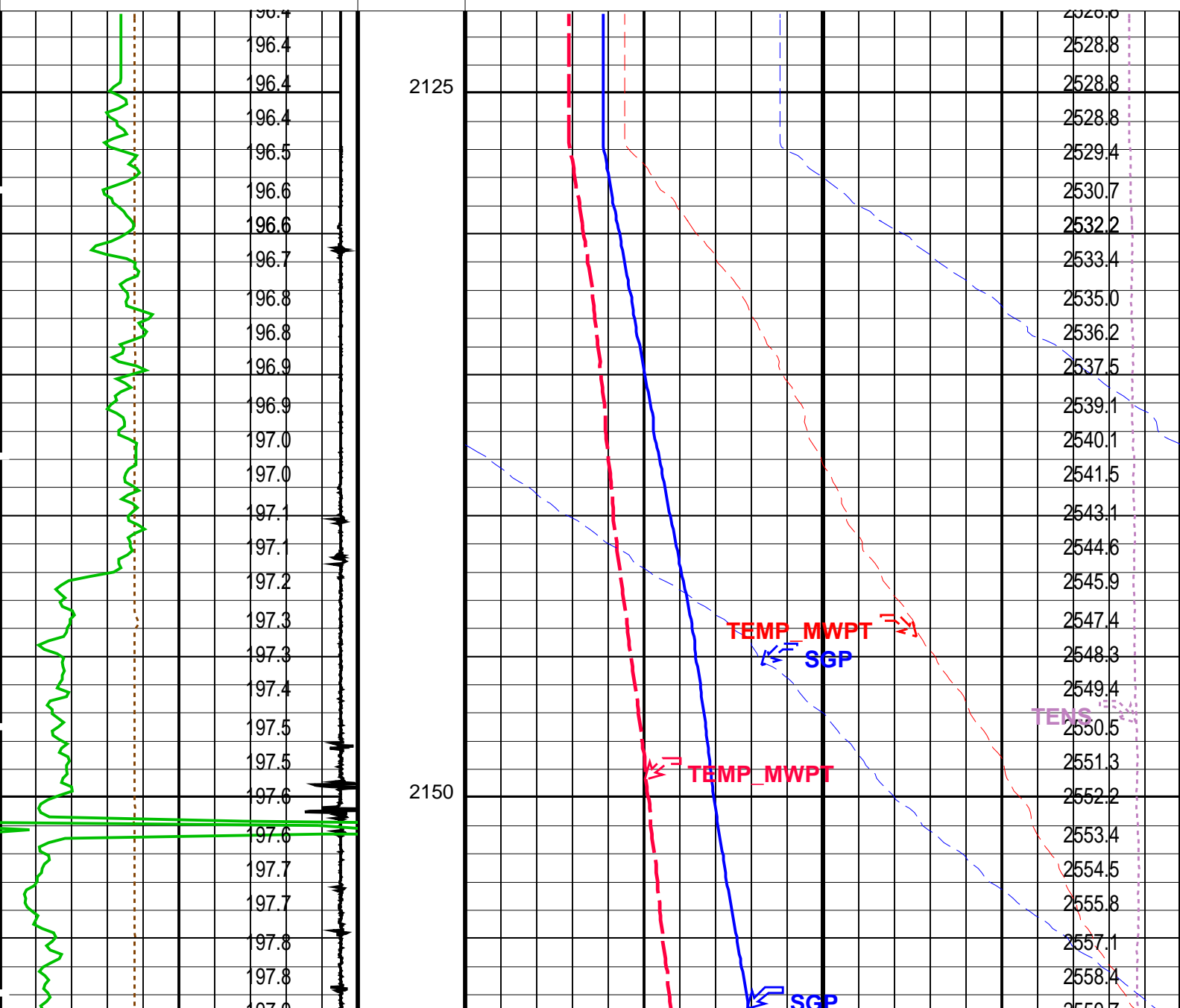
MWGT-AA

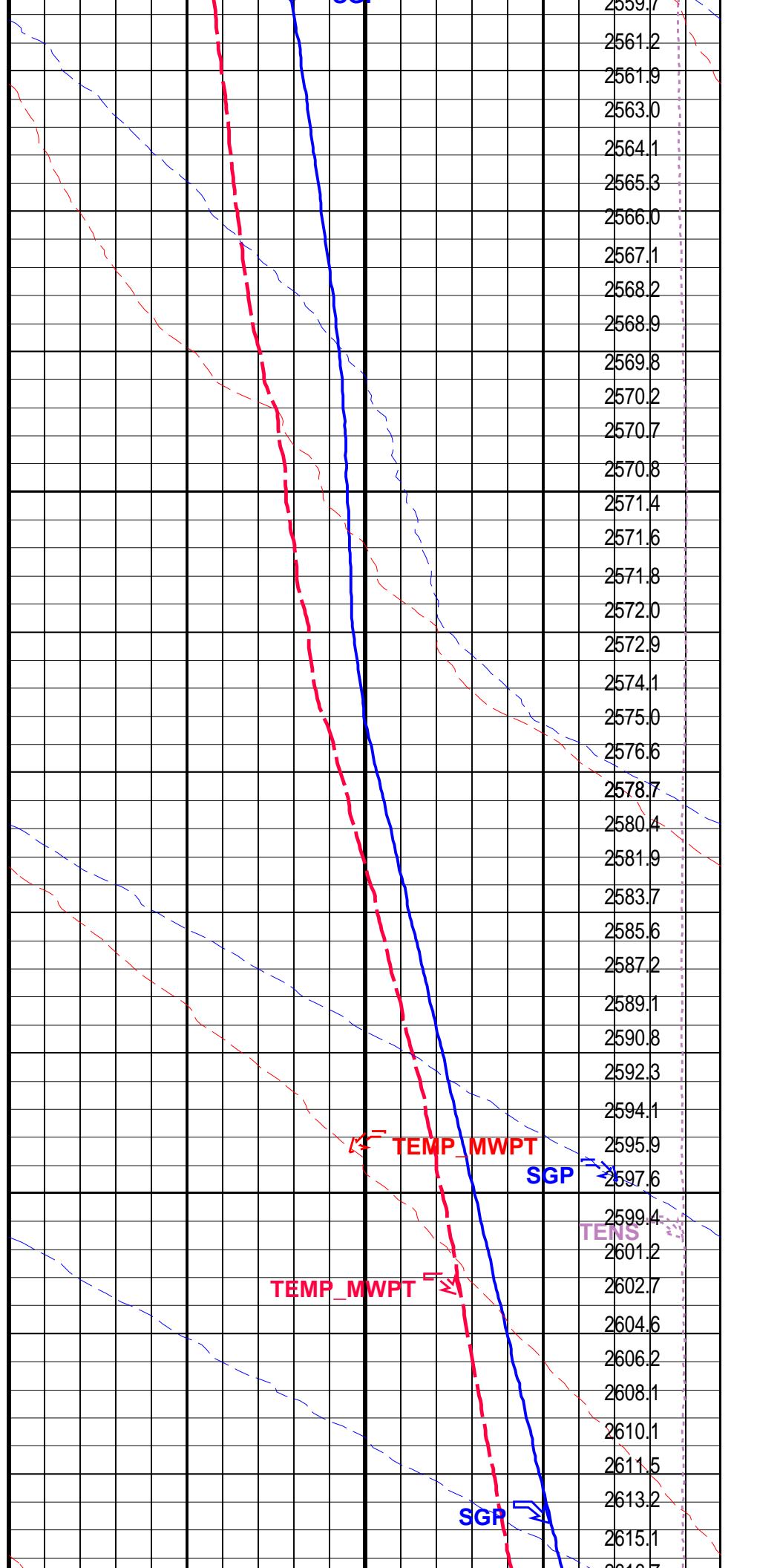
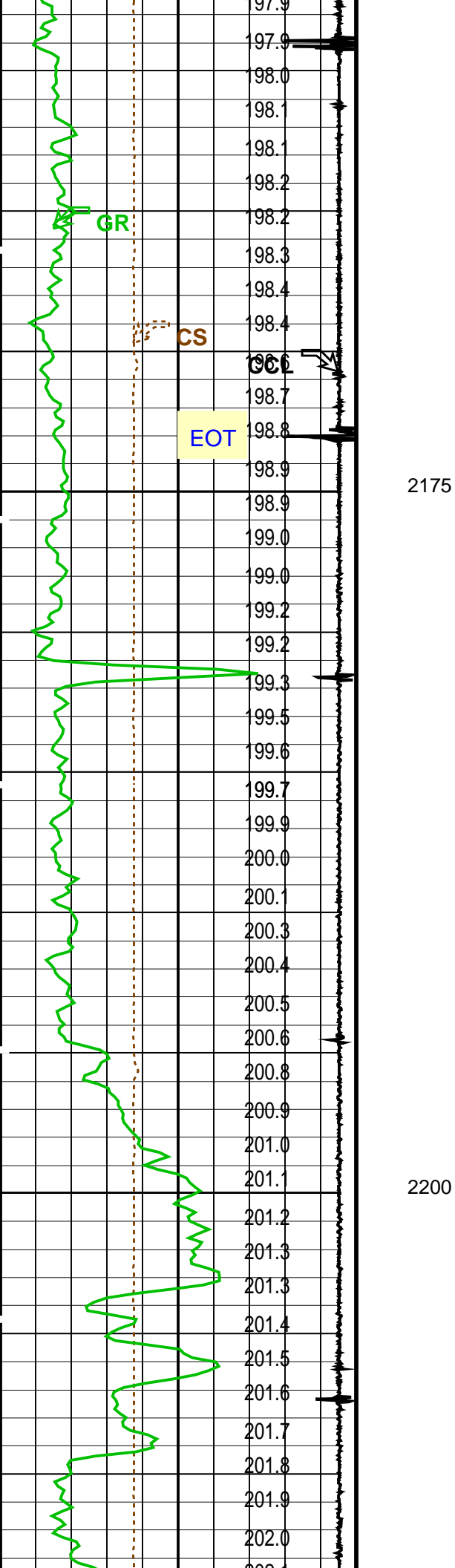
16C0-147

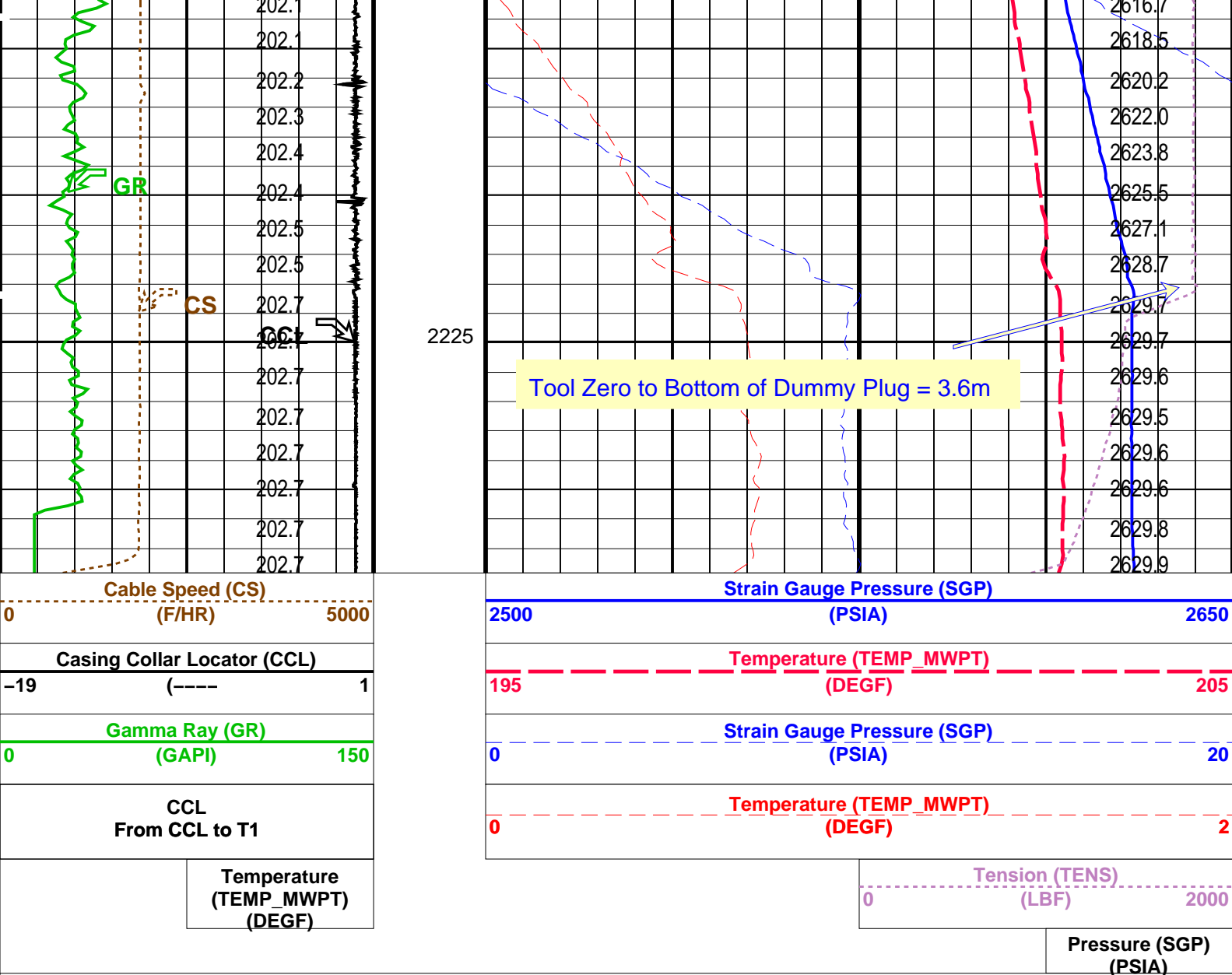
PIP SUMMARY

Time Mark Every 60 S

Temperature (TEMP_MWPT) (DEGF)		Pressure (SGP) (PSIA)	
CCL From CCL to T1		Tension (TENS) (LBF)	
Gamma Ray (GR) (GAPI)		0 2000	
Casing Collar Locator (CCL)		Temperature (TEMP_MWPT) (DEGF)	
-19 (----) 1		0 20	
Cable Speed (CS) (F/HR)		Temperature (TEMP_MWPT) (DEGF)	
0 5000		195 205	
		Strain Gauge Pressure (SGP) (PSIA)	
		2500 2650	







PIP SUMMARY

Time Mark Every 60 S

Parameters			
DLIS Name	Description	Value	
MWPT-CA: MEASUREMENT WHILE PERFORATING TOOL			
DEVI_FL_CORR	Deviation Angle for Flow Line Correction	0	DEG
FLD	Flow Line Density	1	G/C3
MWPT_NULL_SOURCE	MWPT NULL Temperature Source	TEMS	
MWPT_NULL_TEMP	MWPT NULL Temperature	0.0	DEGC
System and Miscellaneous			
DO	Depth Offset for Playback	8.4	M
PP	Playback Processing	NORMAL	

Format: MWP Vertical Scale: 1:200 Graphics File Created: 20-Oct-2008 20:25

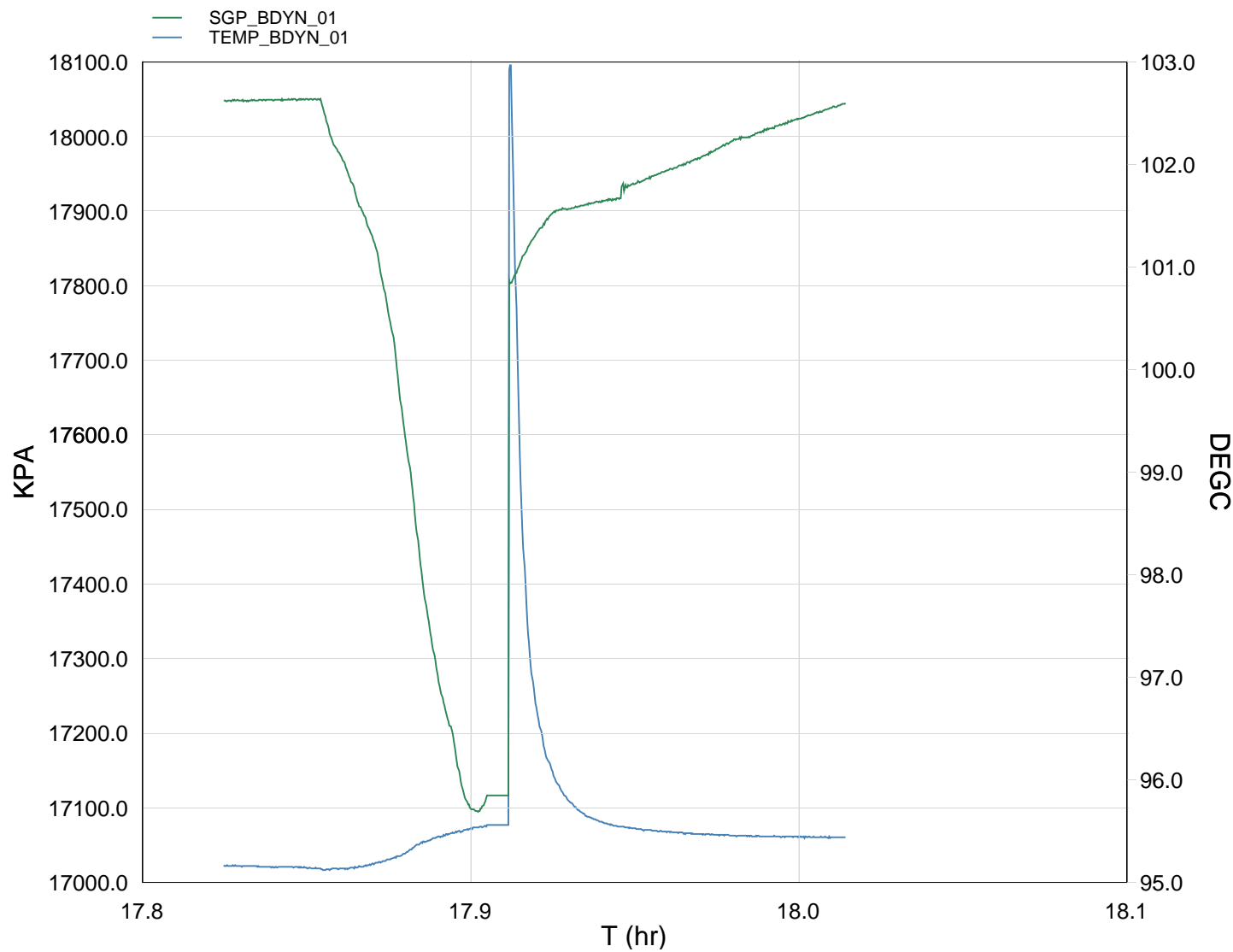
OP System Version: 16C0-147			
MCM			
MWPT-CA	16C0-147	MWGT-AA	16C0-147

Input DLIS Files						
DEFAULT	PERFO_026LUP	FN:24	PRODUCER	20-Oct-2008 20:11	2224.4 M	2116.1 M
Output DLIS Files						
DEFAULT	PERFO_028PUP	FN:26	PRODUCER	20-Oct-2008 20:25		



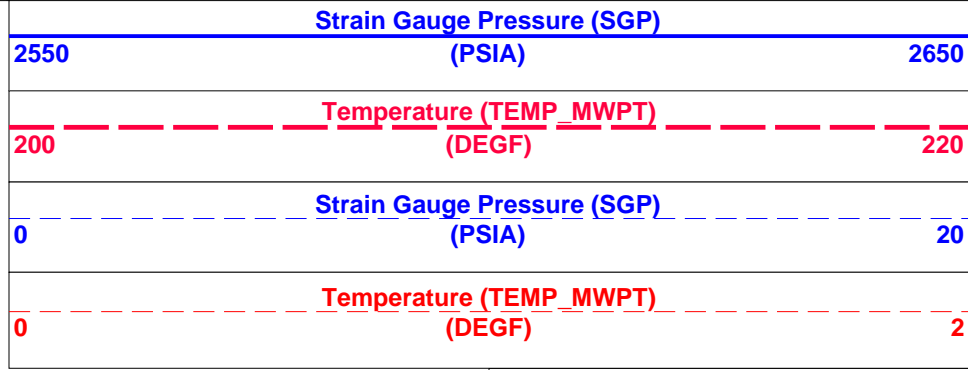
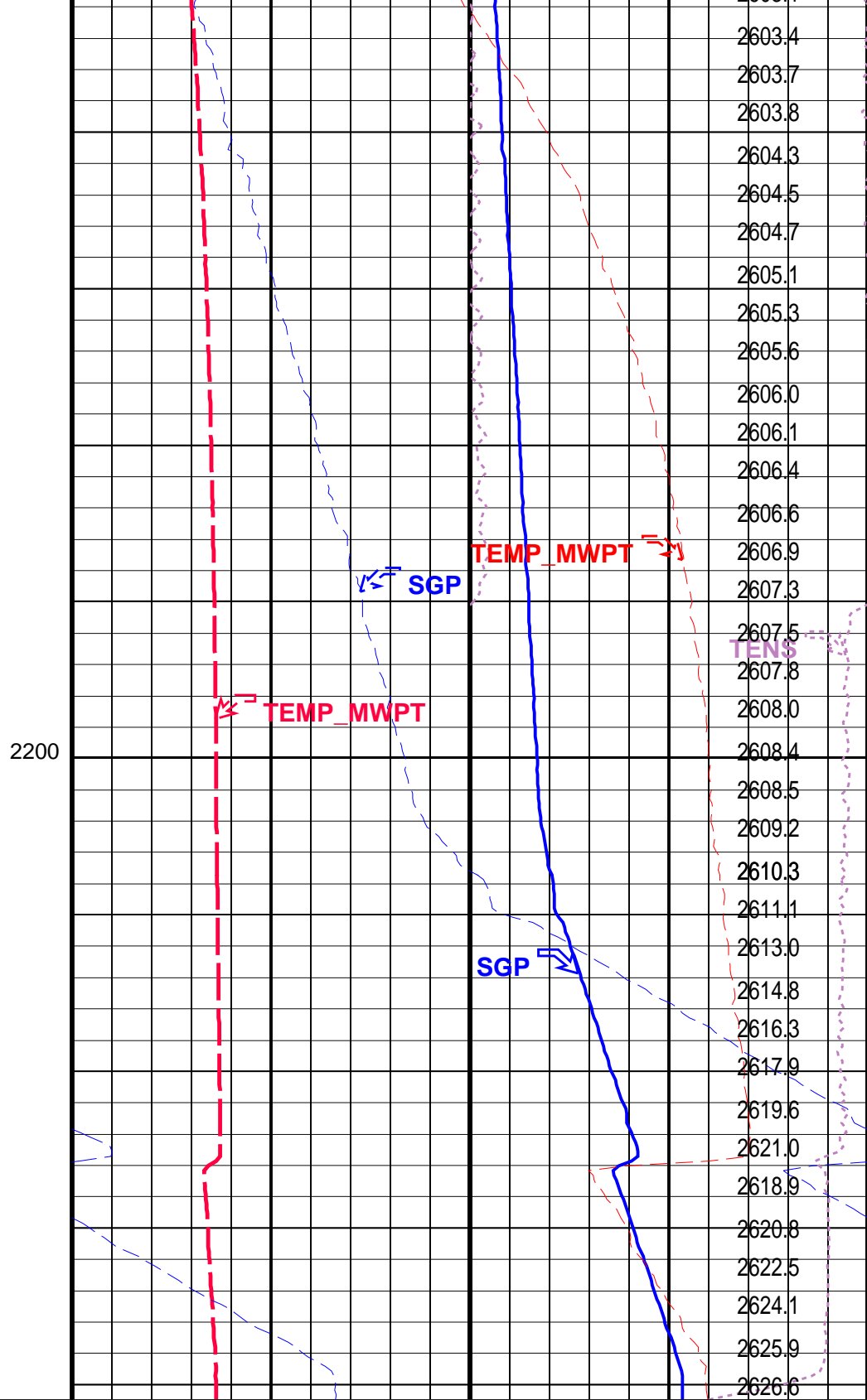
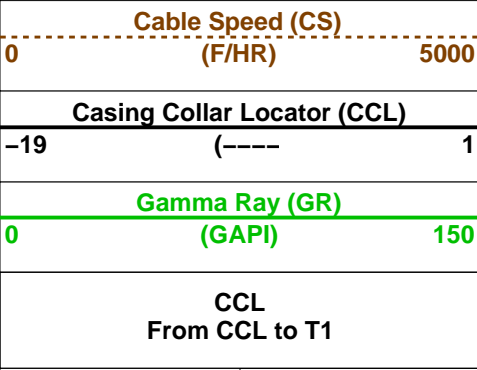
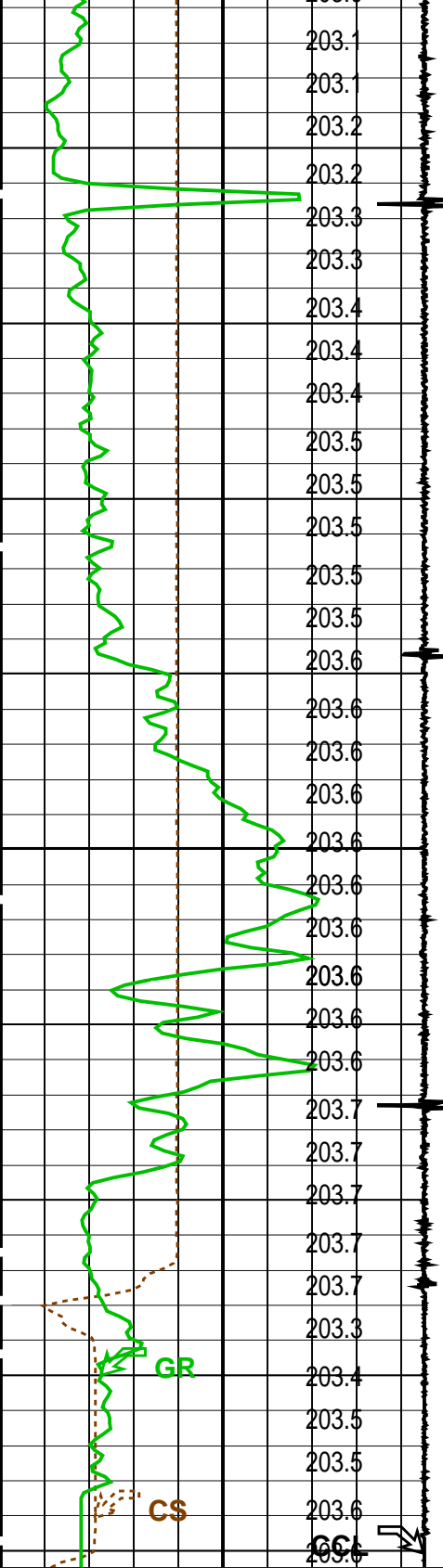
Gun # 1 Fired @  
2216.5m to 2218.5m MDKB

MAXIS Field Log

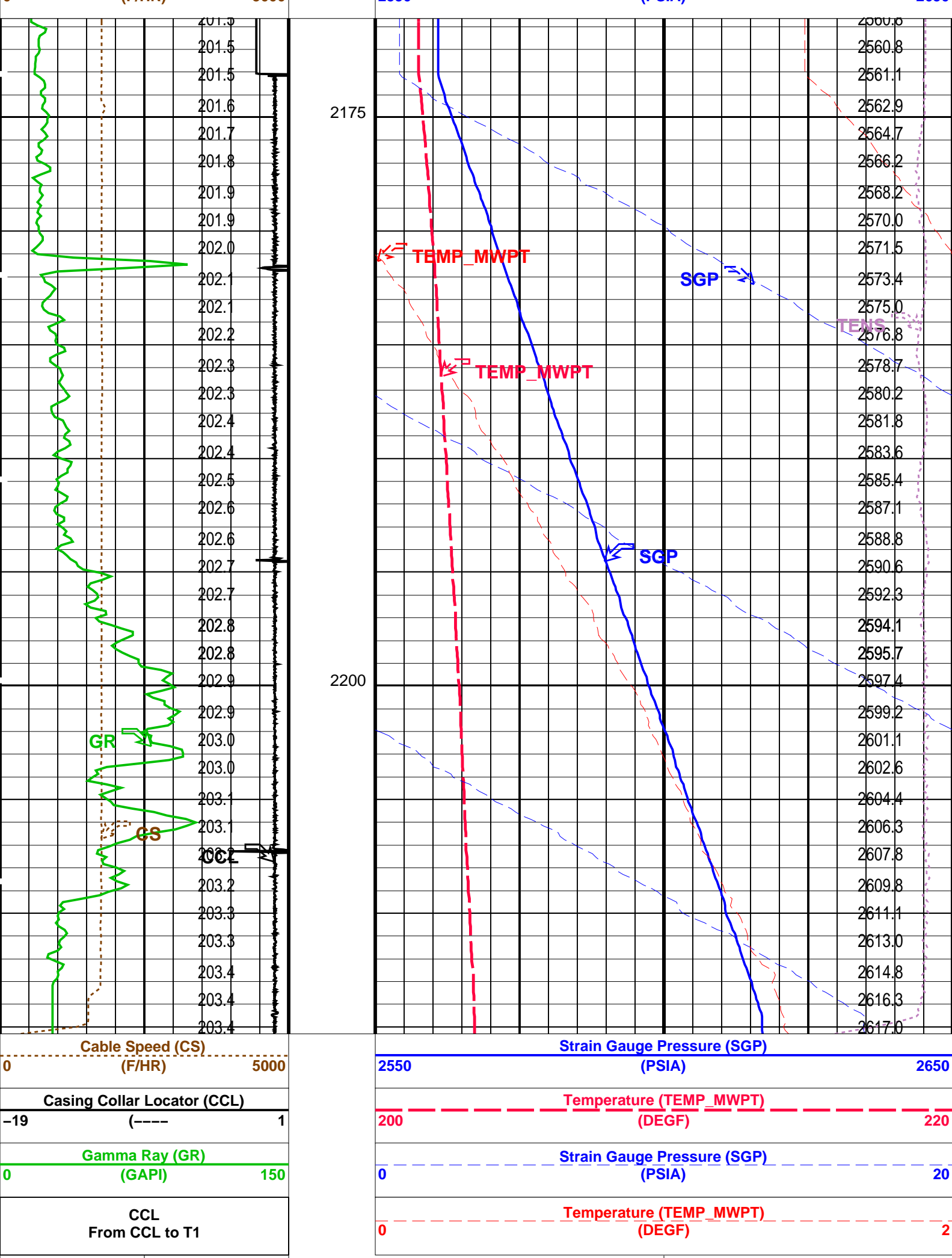


TIME	KPA	PSIA	DEGF
1680.0	18047.8273	2617.6202	203.2883
1710.0	18048.6503	2617.7394	203.2862
1740.0	18049.6295	2617.8815	203.2768
1770.0	18049.6869	2617.8898	203.2560
1800.0	17981.8645	2608.0529	203.2374
1830.0	17894.1775	2595.3350	203.2871 Draw Down
1860.0	17743.6474	2573.5026	203.4215











Temperature (TEMP_MWPT) (DEGF)		0 (LBF) 2000	
		Pressure (SGP) (PSIA)	
PIP SUMMARY			
Time Mark Every 60 S			
Parameters			
DLIS Name	Description	Value	
MWPT-CA: MEASUREMENT WHILE PERFORATING TOOL			
DEVI_FL_CORR	Deviation Angle for Flow Line Correction	0	DEG
FLD	Flow Line Density	1	G/C3
MWPT_NULL_SOURCE	MWPT NULL Temperature Source	TEMS	
MWPT_NULL_TEMP	MWPT NULL Temperature	0.0	DEGC
Format: MWP Vertical Scale: 1:200		Graphics File Created: 20-Oct-2008 17:37	
OP System Version: 16C0-147			
MCM			
MWP_GUN	16C0-147	MWPT-CA	16C0-147
MWGT-AA	16C0-147		
Output DLIS Files			
DEFAULT	PERFO_018LUP	FN:16 PRODUCER	20-Oct-2008 17:37
Company: Esso Australia Pty Ltd.			
Well: A-20A			
Field: Bream A			
Rig : Prod4 / Crane			
Country: Australia			
2 1/8" Phased Powerjet			
7" MPBT Plug			
Setting Record			

Schlumberger