



Compact

**DUAL LATEROLOG - GR
DENSITY - NEUTRON**

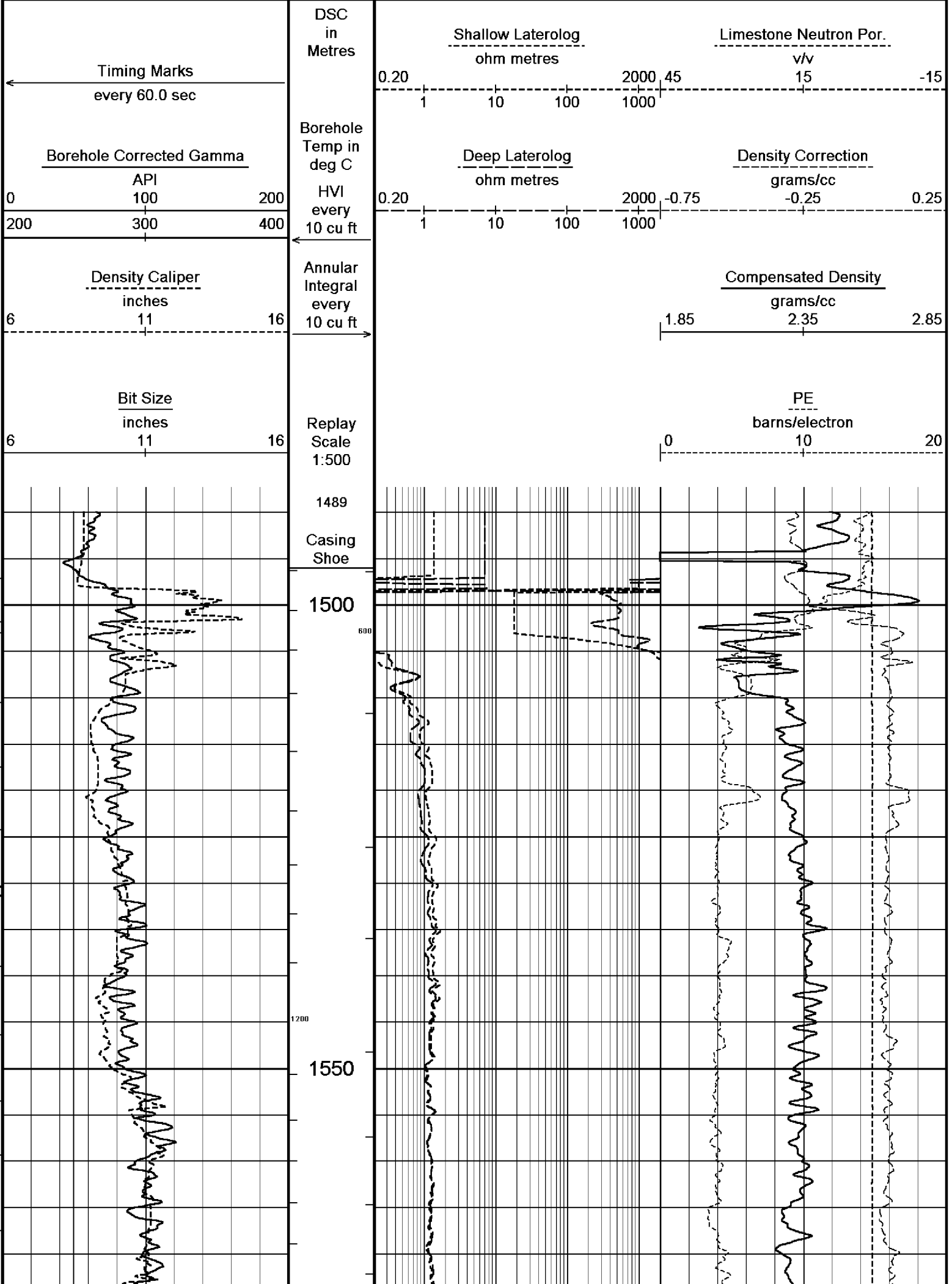
1:500 MD

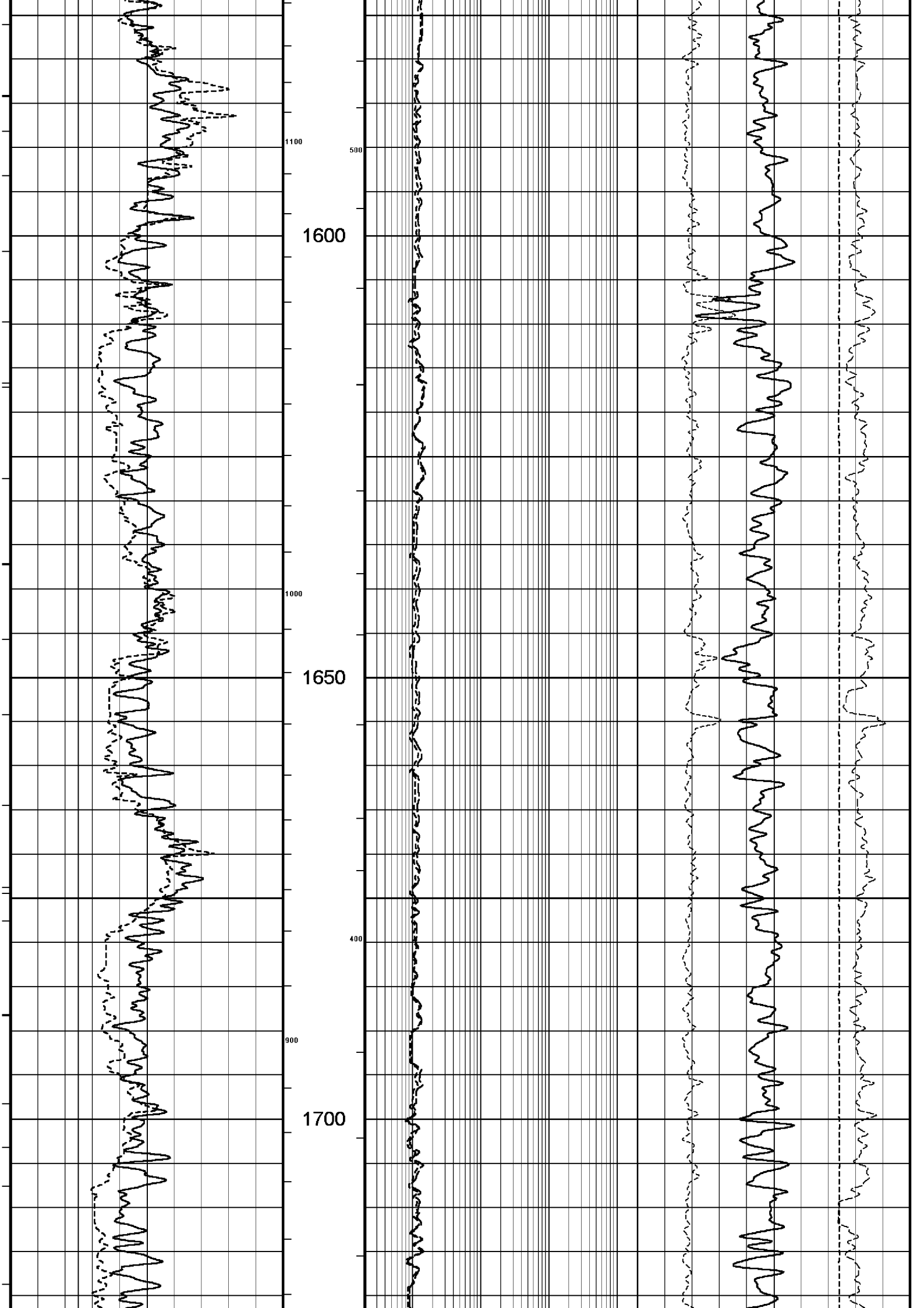
COMPANY	ESSO AUSTRALIA PTY LTD			
WELL	BREAM A1A			
FIELD	BREAM			
PROVINCE/COUNTY	BASS STRAIT			
COUNTRY/STATE	AUSTRALIA			
LOCATION	S 38 29 58.755, E 147 46 19.983 N 5738462.460 m, E 567336.500 m			
LSD	SEC	TWP	RGE	Other Services
				COMPENSATED SONIC
API Number				
Permit Number				
Permanent Datum MSL	, Elevation 0.0 metres			Elevations:
Log Measured From RT @ 32.82 M	above Permanent Datum			KB DF GL 32.82 -59.40 metres metres metres
Drilling Measured From RT				
Date	08-Nov-2005			
Run Number	ONE			
Depth Driller	2294.00 metres			
Depth Logger	2291.00 metres			
First Reading	2285.60 metres			
Last Reading	1490.00 metres			
Casing Driller	1496.00 metres			
Casing Logger	1496.00 metres			
Bit Size	8.50 inches			
Hole Fluid Type	KCL/GYL/POLY			
Density / Viscosity	10.10 lb/USg 69.00 CP			
PH / Fluid Loss	9.00 3.00			
Sample Source	FLOWLINE			
Rm @ Measured Temp	0.113 @ 25.0 ohm-m			
Rmf @ Measured Temp	0.088 @ 25.0 ohm-m			
Rmc @ Measured Temp	0.168 @ 25.0 ohm-m			
Source Rmf / Rmc	PRESS PRESS			
Rm @ BHT	0.053 @ 79.0 ohm-m			
Time Since Circulation	22 Hours			
Max Recorded Temp	82.00 deg C			
Equipment Name	5" CWS/CML			
Equipment / Base	1 SALE			
Recorded By	R. TENCH, B. MOSS			
Witnessed By	TREVOR LOBO			
CIRC STOPPED	15:30 7-NOV			

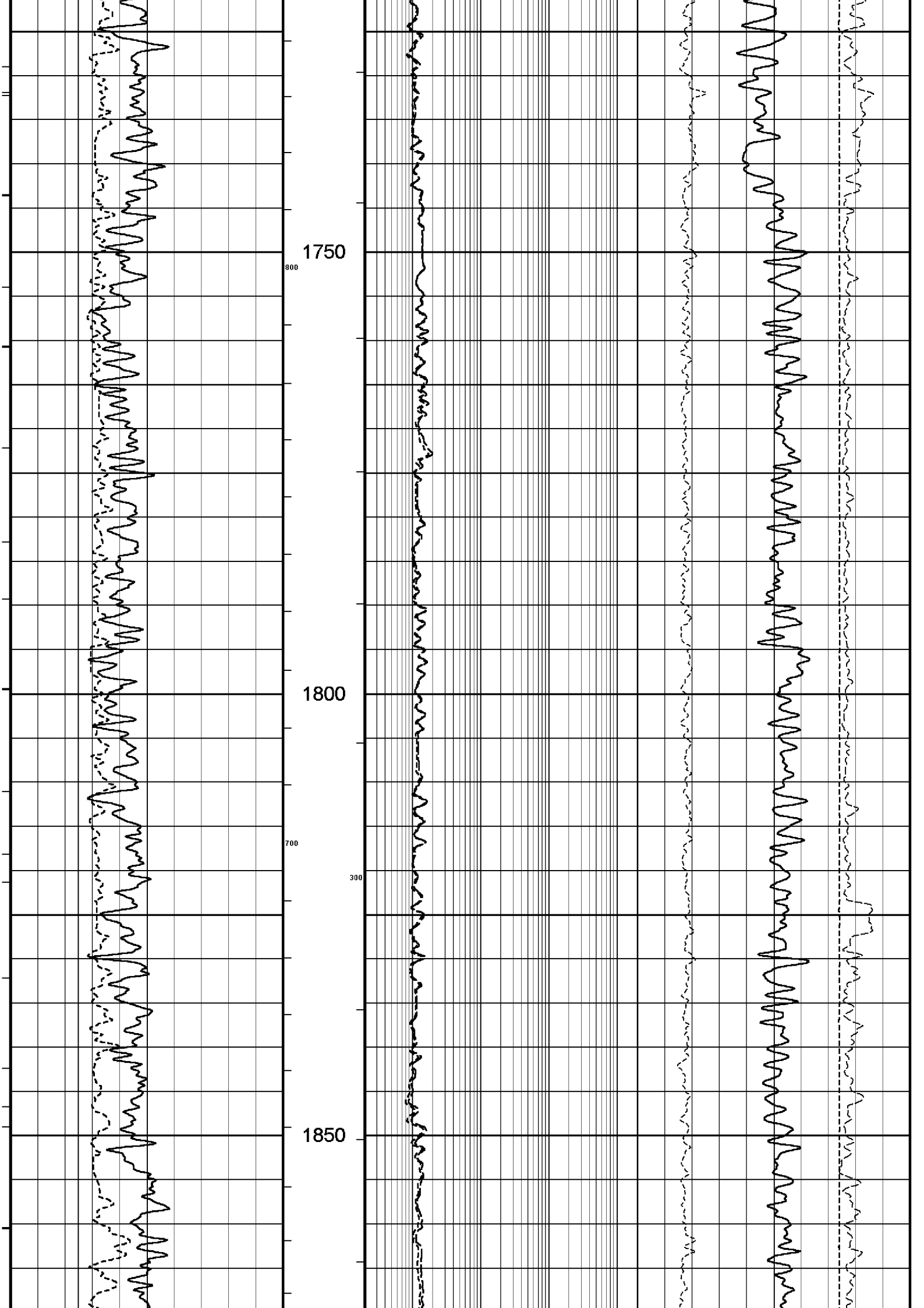
BOREHOLE RECORD				
Bit Size inches		Depth From metres		Depth To metres
8.500		1496.00		2294.00
CASING RECORD				
Type	Size inches	Depth From metres	Shoe Depth metres	Weight pounds/ft
K-55	13.375	0.00	853.00	54.50
L-80	9.625	0.00	1496.00	47.00

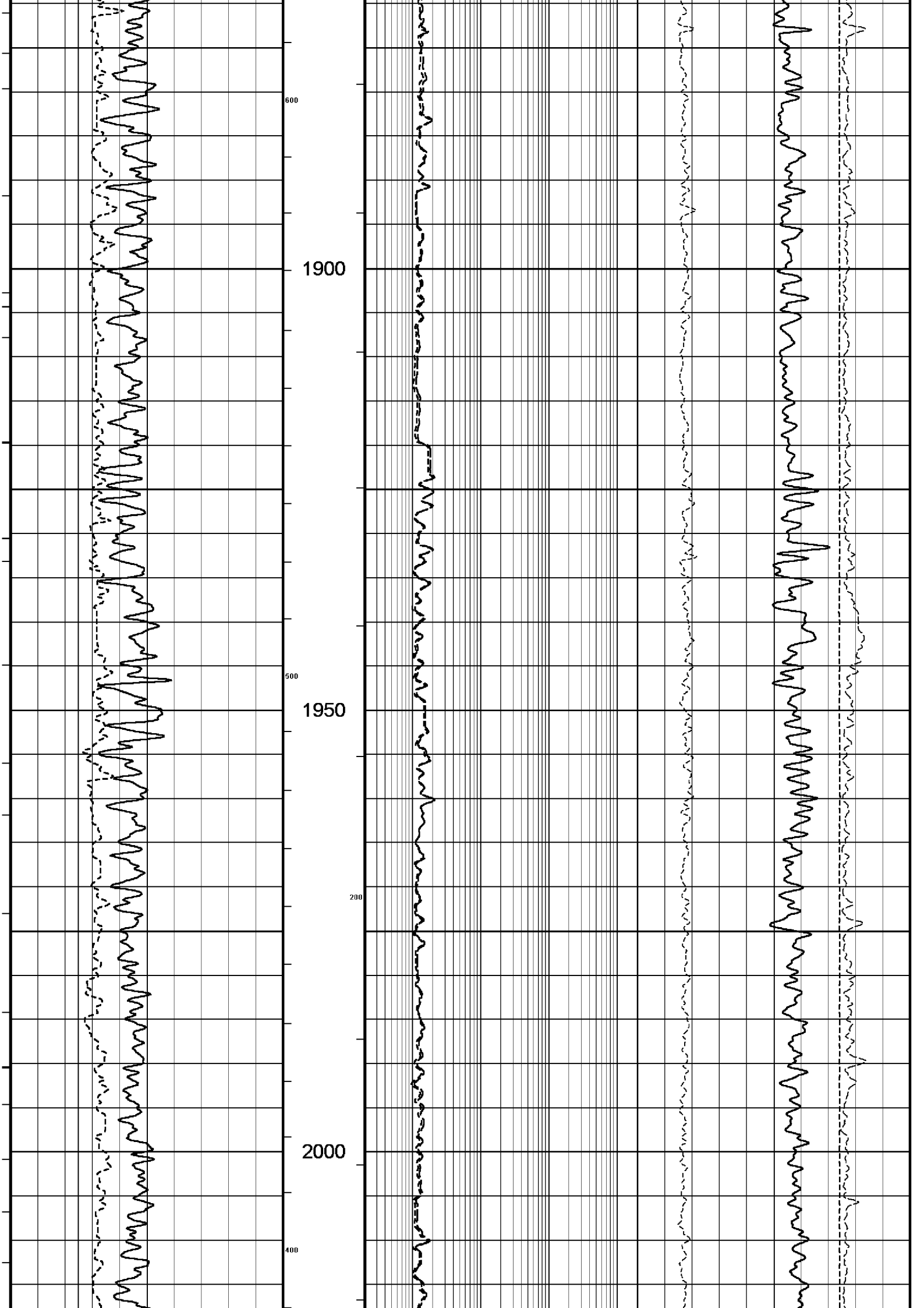
REMARKS
RIG: NABORS 453
5" SHUTTLE/MEMORY COMPACT OPERATION. CREW: R TENCH , B MOSS , B GOODWIN, M KOLCZE.
FIELD FINAL LOGS TO BE CORRELATED TO ANADRILL GAMMA LOG.
MAX. TEMPERATURE: 82DEG C AT 2249 m MD MAX. INCLINATION: 43.98 DEG AT 1500m MD MAX. DOGLEG SERVERITY: 7.58DEG/30m AT 1561.54 m MD DEPLOYMENT ANGLE: 14.45 DEG
HVOL: 1290 FT^3 AVOL: 610 FT^3

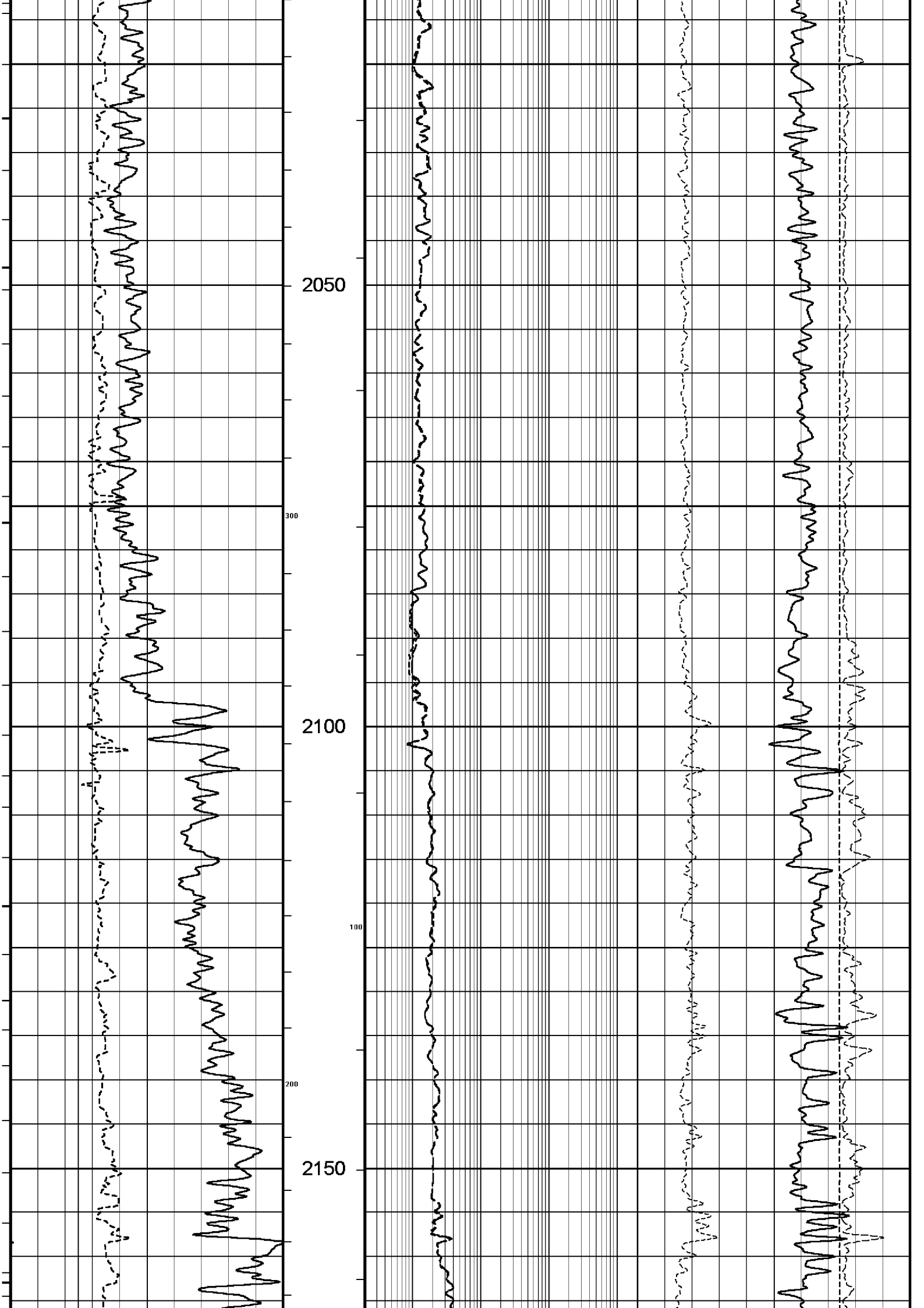
All interpretations are opinions based on inferences from electrical or other measurements and we cannot, and do not, guarantee the accuracy or correctness of any interpretations, and we shall not, except in the case of gross or wilful negligence on our part, be liable or responsible for any loss, costs, damages or expenses incurred or sustained by anyone resulting from any interpretation made by any of our officers, agents or employees. These interpretations are also subject to our general terms and conditions in our price schedule.

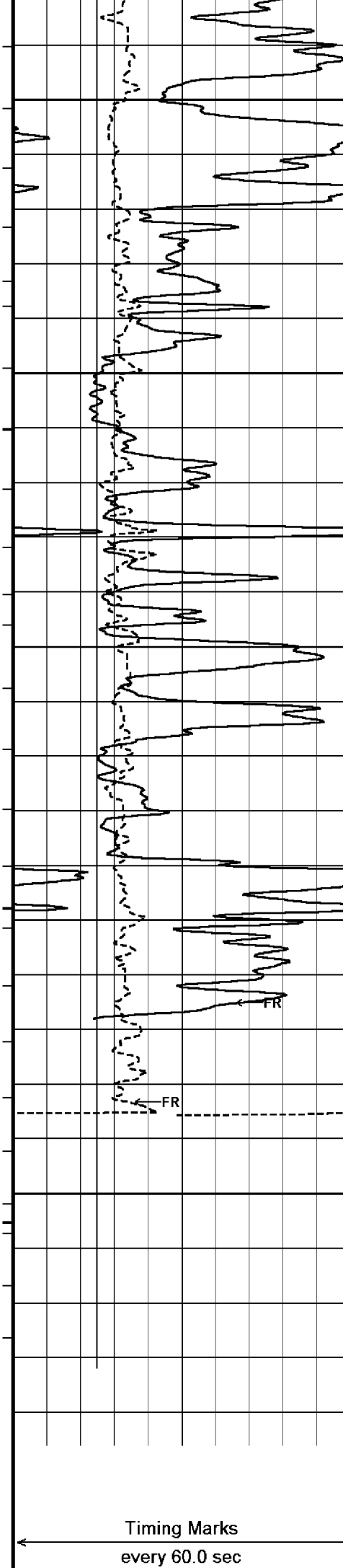










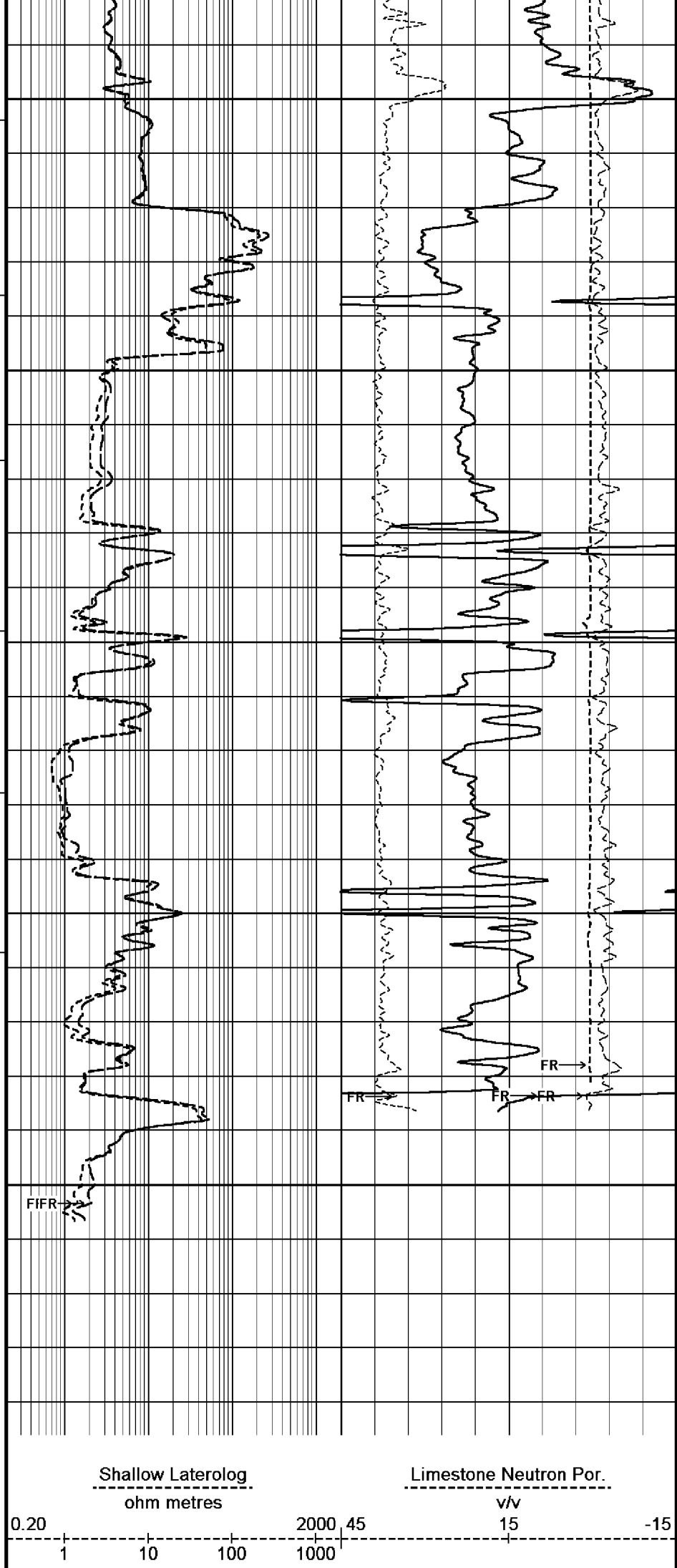


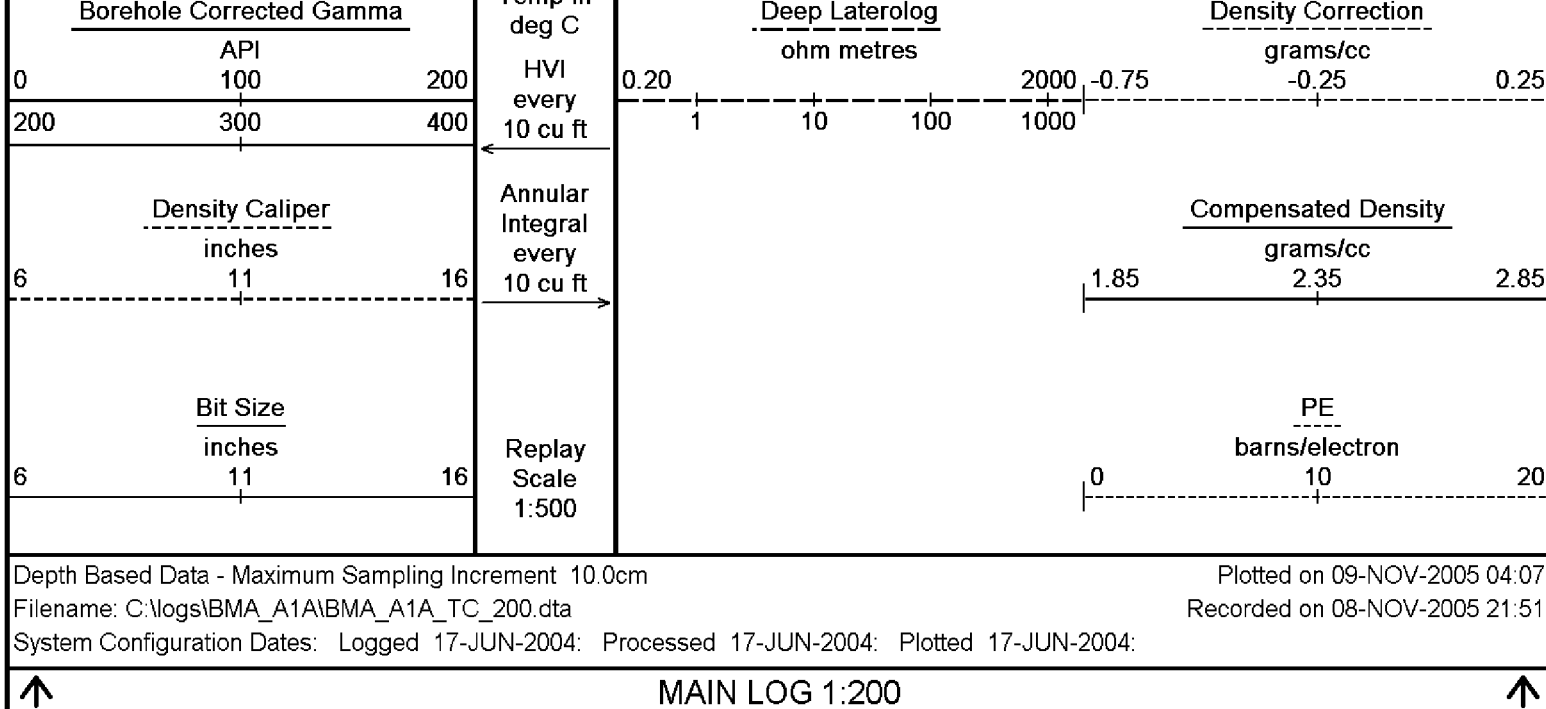
2200

2250

2297
DSC
in
Metres

Borehole
Temp in





BEFORE SURVEY CALIBRATION				C:\logs\BMA_A1A\BMA_A1A_TC_200.dta
General Constants All 000				
General Parameters				
Mud Resistivity	0.113	ohm-metres		
Mud Resistivity Temperature	25.000	degrees C		
Water Level	0.000	metres		
Density/Neutron Processing	Wet Hole			
Hole/Annular Volume and Differential Caliper Parameters				
HVOL Caliper 1	Density Caliper			
HVOL Caliper 2	Density Caliper			
Annular Volume Diameter	7.000	inches		
Caliper for Differential Caliper	None			
Rwa Parameters				
Porosity used	Limestone Sonic Porosity			
Resistivity used	Deep Induction			
RWA Constant A	0.610			
RWA Constant M	2.150			
High Resolution Temperature Calibration MCG 142				
	Measured	Calibrated(Deg C)		Field Calibration on 7-NOV-2005,03:12
Lower	0.00	0.00		
Upper	100.00	100.00		
High Resolution Temperature Constants MCG 142				
Pre-filter Length	11			
Gamma Calibration MCG 142				
	Measured	Calibrated (API)		Field Calibration on 7-NOV-2005 03:17
Background	21	14		
Calibrator (Gross)	1367	923		
Calibrator (Net)	1346	909		
Gamma Constants MCG 142				
Gamma Calibrator Number	060			
Mud Density	1.21	gm/cc		
Caliper Source for Processing	Density Caliper			
Tool Position	Centred			
Concentration of KCl	0.00	kppm		
Neutron Calibration MDN 085				
				Base Calibration on 28-OCT-2005 16:16
				Field Check on 7-NOV-2005 03:32

Base Calibration		Measured		Calibrated (cps)	
		Near	Far	Near	Far
		3202	100	3714	110
Ratio		32.170		33.764	
Field Calibrator at Base				Calibrated (cps)	
				1608	2344
Ratio				0.686	
Field Check				Calibrated (cps)	
				1577	2339
Ratio				0.674	

Neutron Constants MDN 085				
Neutron Source Id		NSN-E-729		
Neutron Jig Number		NEC-C-052		
Epithermal Neutron		No		
Caliper Source for Processing		Bit Size		
Stand-off		0.00	inches	
Mud Density		1.21	gm/cc	
Limestone Sigma		7.10	cu	
Sandstone Sigma		4.26	cu	
Dolomite Sigma		4.70	cu	
Formation Pressure Source		None		
Formation Pressure		N/A	kpsi	
Temperature Source	MCG External Temperature			
Temperature	N/A		degrees C	
Mud Salinity	59.40		kppm	
Formation Fluid Salinity Source		None		
Formation Fluid Salinity		N/A	kppm	
Barite Mud Correction		Not Applied		

Caliper Calibration MPD 083			Base Calibration on 28-OCT-2005 18:13 Field Calibration on 7-NOV-2005 03:20	
Base Calibration				
Reading No		Measured	Calibrator Size (in)	
1		13616	4.01	
2		21847	5.99	
3		30336	7.98	
4		38762	9.94	
5		47872	12.01	
6		N/A	N/A	
Field Calibration				
		Measured Caliper (in)	Actual Caliper (in)	
		7.94	7.98	

Photo Density Calibration MPD 083				Base Calibration on 28-OCT-2005 18:32	
				Field Check on 7-NOV-2005 03:25	
Density Calibration					
Base Calibration		Measured		Calibrated (sdu)	
		Near	Far	Near	Far
	Reference 1	54504	18779	53111	19310
	Reference 2	25530	2542	24951	2530
Field Check at Base					
		949.8	1099.0		
Field Check					
		950.3	1097.1		
PE Calibration					
Base Calibration		Measured		Calibrated	
	WS	WH	Ratio	Ratio	
	Background	181	815		
	Reference 1	17171	54310	0.318	0.320
	Reference 2	6840	25386	0.271	0.273
Field Check at Base					
		181.2	815.4		
Field Check					
		181.0	813.6		

Density Constants MPD 083

Density Source Id	NSD-L-242	
Nylon Calibrator Number	DNC-D-536	
Aluminium/Fe Calibrator Number	DNC-D-536	
Density Shoe Profile	4 inch	
Caliper Source for Processing	Density Caliper	
PE Correction to Density	Not Applied	
Mud Density	1.21	gm/cc
Mud Density Z/A Correction	1.11	
Mud Filtrate Density	1.00	gm/cc
Dry Hole Mud Filtrate Density	1.00	gm/cc
DNCT	0.00	gm/cc
CRCT	0.00	gm/cc
Matrix Density (gm/cc)	Depth (m)	
2.71		
0.00	0.00	
0.00	0.00	
0.00	0.00	
0.00	0.00	
0.00	0.00	
0.00	0.00	
0.00	0.00	
0.00	0.00	

Laterolog Constants MLE 031

Squasher Start	40000	ohm-m
Shallow Laterolog K Factor	1.3210	
Deep Laterolog K Factor	0.7550	
Groningen Laterolog K Factor	0.8540	
Interference Rejection	50 Hz	
SP Connection	SP Bridle Electrode	
Groningen Connection	Groningen Electrode	

DOWNHOLE EQUIPMENT

C:\logs\BMA_A1A\BMA_A1A_TC_200.dta

Compact Swivel Head Adaptor F SHA 71 Length: 0.83 m Weight: 26.5 lb	
Compact Knuckle Joint SKJ 100 Length: 0.66 m Weight: 24.3 lb	
Compact Battery Sub. MBS 99 Length: 4.41 m Weight: 44.1 lb	
Compact Inline Standoff B MIS 73 Length: 0.65 m Weight: 15.4 lb	
Compact Stiff Bridle Electrode Sub. MBE 18 Length: 3.76 m Weight: 94.8 lb	
Compact Inline Standoff B MIS 138 Length: 0.65 m Weight: 15.4 lb	
Compact Stiff Bridle Electrode Sub.	

Compact Out Bridge Electrode Sub.
MBE 19 Length: 3.76 m Weight: 94.8 lb

Compact Inline Standoff B
MIS 136 Length: 0.65 m Weight: 15.4 lb

MBE21 - THIRD BRIDLE
MLK 111 Length: 3.76 m Weight: 30.9 lb

Compact Inline Standoff B
MIS 133 Length: 0.65 m Weight: 15.4 lb

Compact Gamma
MCG 142 Length: 2.65 m Weight: 63.9 lb

32.63 m GGCE - Borehole Corrected Gamma
31.75 m CGXT - MCG External Temperature

Compact Memory Sub A.C
MMS 38 Length: 1.37 m Weight: 30.9 lb

Compact Knuckle Joint
SKJ 45 Length: 0.66 m Weight: 24.3 lb

Compact Swivel Head Adaptor F
SHA 64 Length: 0.83 m Weight: 26.5 lb

Compact Inline Bowspring A
MIS 94 Length: 1.74 m Weight: 33.1 lb

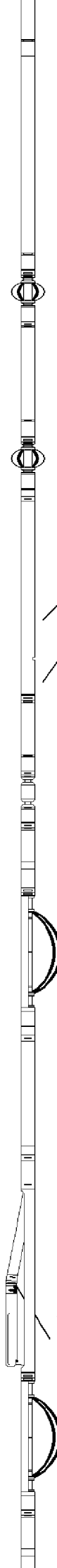
Compact Neutron
MDN 85 Length: 1.53 m Weight: 50.7 lb

Compact Density/Caliper
MPD 83 Length: 2.92 m Weight: 90.4 lb

23.48 m AVOL - Annular Volume
23.48 m HVOL - Hole Volume
23.48 m CLDC - Density Caliper

Compact Inline Bowspring A
MIS 24 Length: 1.74 m Weight: 33.1 lb

Compact Swivel Head Adaptor
SHA 28 Length: 0.83 m Weight: 26.5 lb



Compact Knuckle Joint
SKJ 110 Length: 0.65 m Weight: 24.3 lb

Compact Inline Standoff B
MIS 72 Length: 0.65 m Weight: 15.4 lb

Compact Upper Guard Sub.
MUG 30 Length: 2.74 m Weight: 68.3 lb

Compact Inline Standoff B
MIS 141 Length: 0.65 m Weight: 15.4 lb

Compact Laterolog Electrode Sub.
MLE 31 Length: 3.76 m Weight: 92.6 lb

Compact Inline Standoff B
MIS 127 Length: 0.65 m Weight: 15.4 lb

Compact Lower Guard Sub.
MLG 7 Length: 2.44 m Weight: 55.1 lb

Compact Inline Standoff B
MIS 129 Length: 0.65 m Weight: 15.4 lb

Compact Sonic
MSS 66 Length: 3.82 m Weight: 72.8 lb

Compact Inline Standoff B
MIS 126 Length: 0.65 m Weight: 15.4 lb

Compact Induction
MAI 39 Length: 3.29 m Weight: 48.5 lb

Pressure Bung + Hole Finder
HFS 4 Length: 0.40 m Weight: 6.6 lb

Total Length: 54.43 m Weight: 1201.5 lb



4.60 m TR21 - 3' Transit Time
4.60 m TR12 - 6' Transit Time
4.60 m TR22 - 5' Transit Time
4.60 m TR11 - 4' Transit Time


4.60 m DT35 - 3-5' Compensated Sonic

Tool Zero (0.44m from bottom)

All measurements relative to tool zero.

COMPANY	ESSO AUSTRALIA PTY LTD
WELL	BREAM A1A
FIELD	BREAM
PROVINCE/COUNTY	BASS STRAIT
COUNTRY/STATE	AUSTRALIA

Elevation Kelly Bushing		metres	First Reading	2285.60	metres
Elevation Drill Floor	32.82	metres	Depth Driller	2294.00	metres
Elevation Ground Level	-59.40	metres	Depth Logger	2291.00	metres

 Compact	DUAL LATEROLOG - GR DENSITY - NEUTRON 1:500 MD
--	--