



Company : Stuart Petroleum Ltd

Well : Bazzard-1

Interval : 833.00 - 2476.13 meters

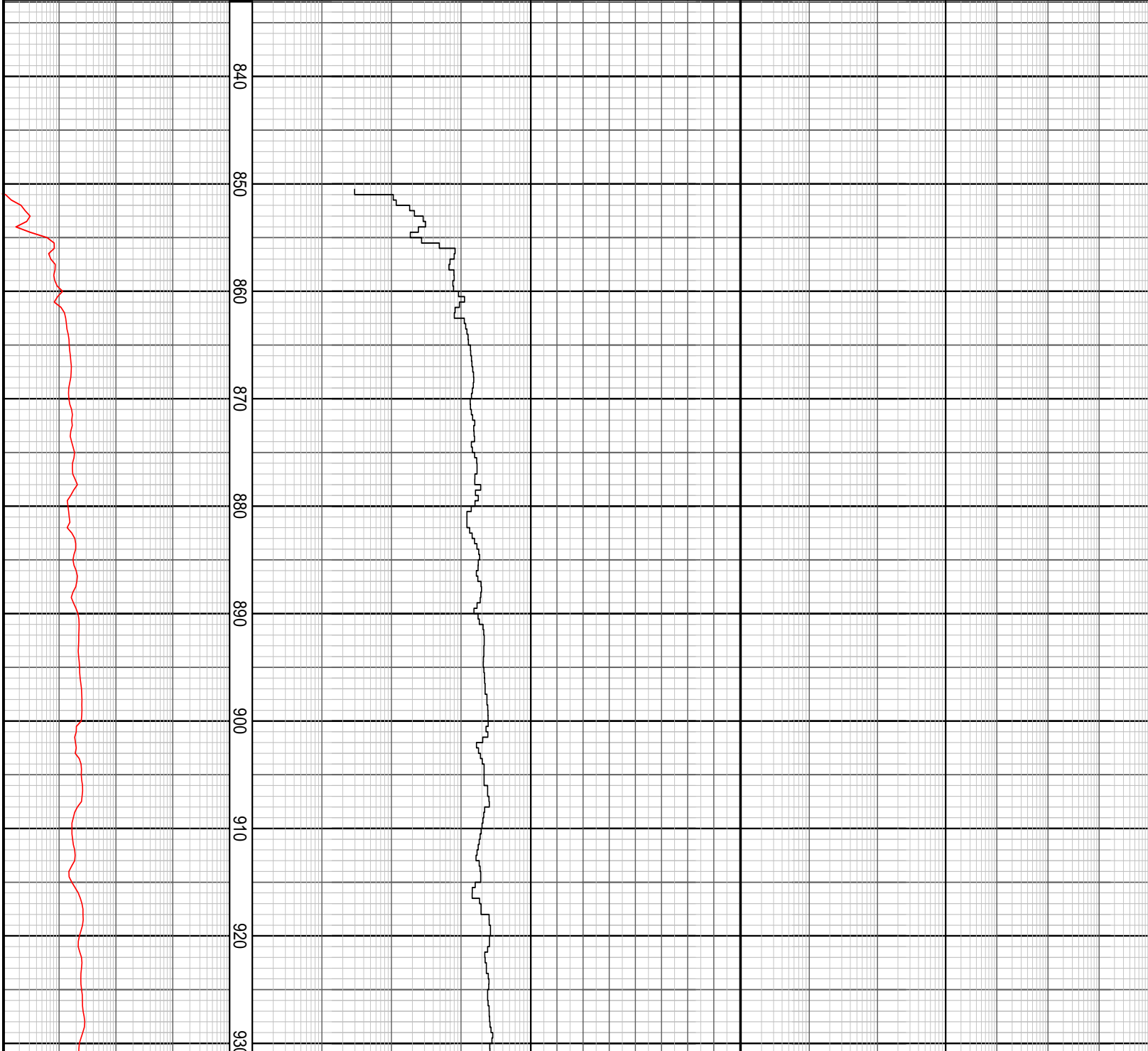
Created : 30/Sep/2008 6:04:56 AM

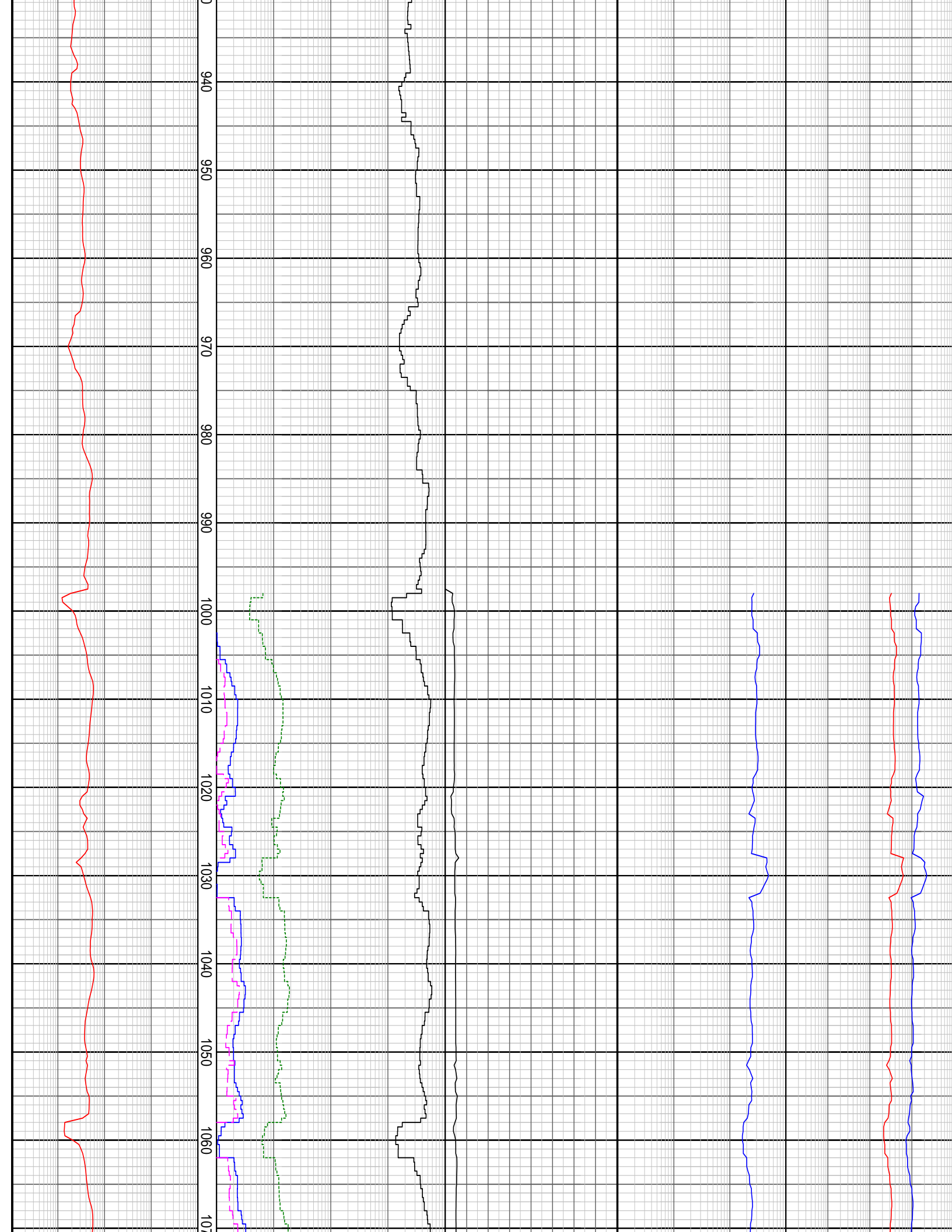


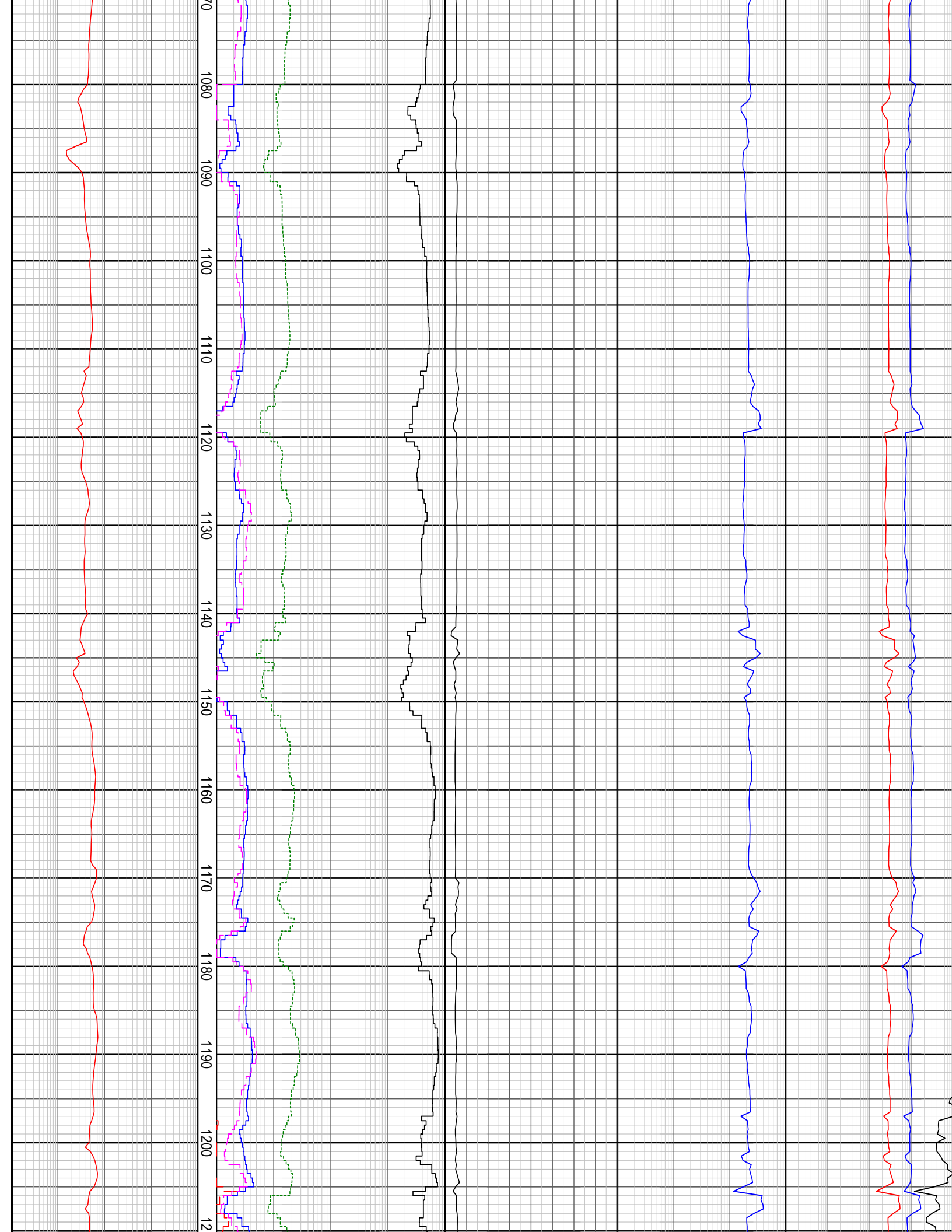
INTEQ

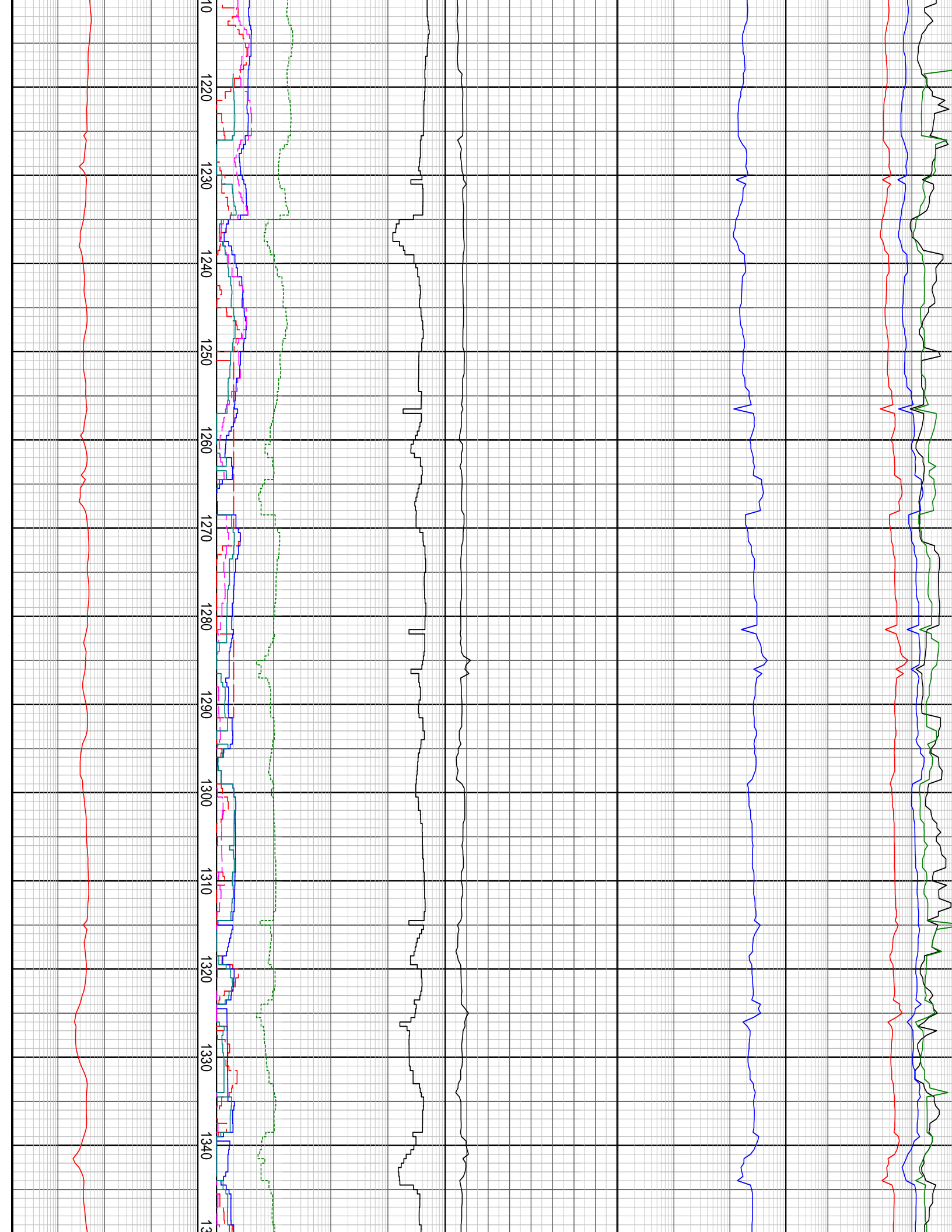
GAS RATIO PLOT

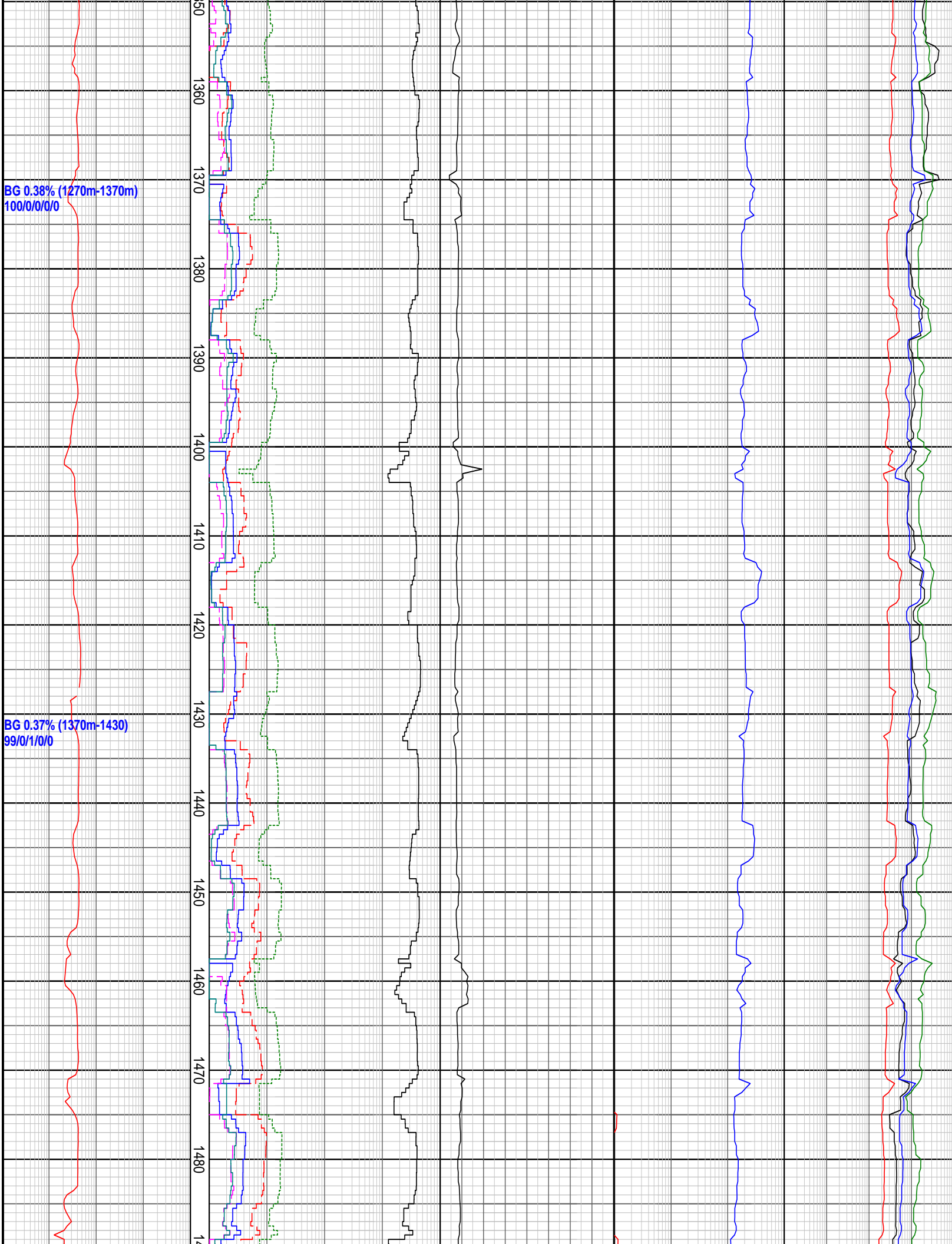
TOTAL GAS % DITCH GAS		CHROMATOGRAPH		OCQ Unitless		RATIOS		C1 Ratios		
0.1	1	1	C1 ppm	10000	1	LHR	1000	1	C1C2	10000
	10	1	C2 ppm	10000	1 2 3 4 5	GWR	1000	1	C1C3	10000
	%	1	C3 ppm	10000				1	C1C4	10000
		1	iC4 ppm	10000				1	C1C5	10000
		1	nC4 ppm	10000						
		1	iC5 ppm	10000						
		1	nC5 ppm	10000						



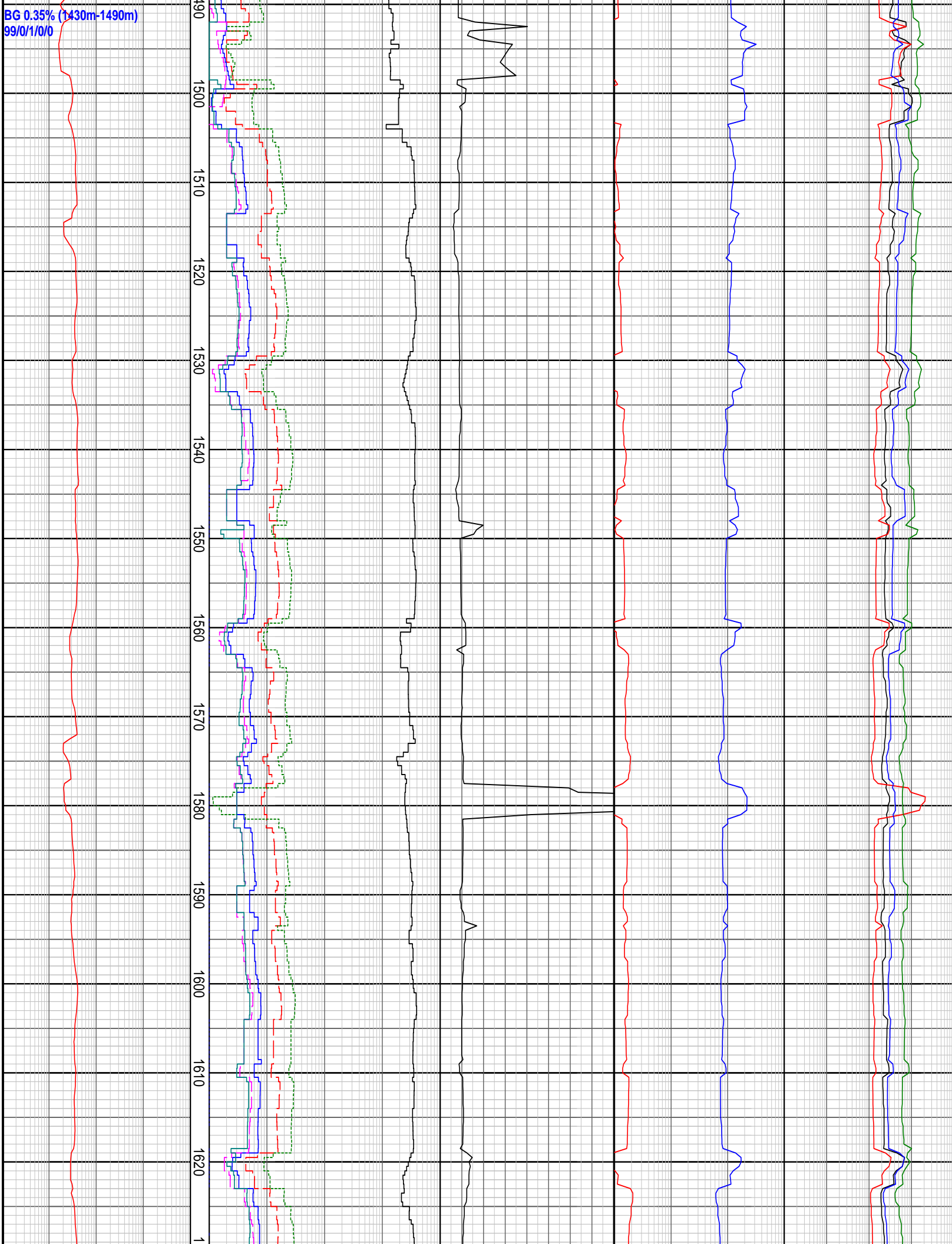


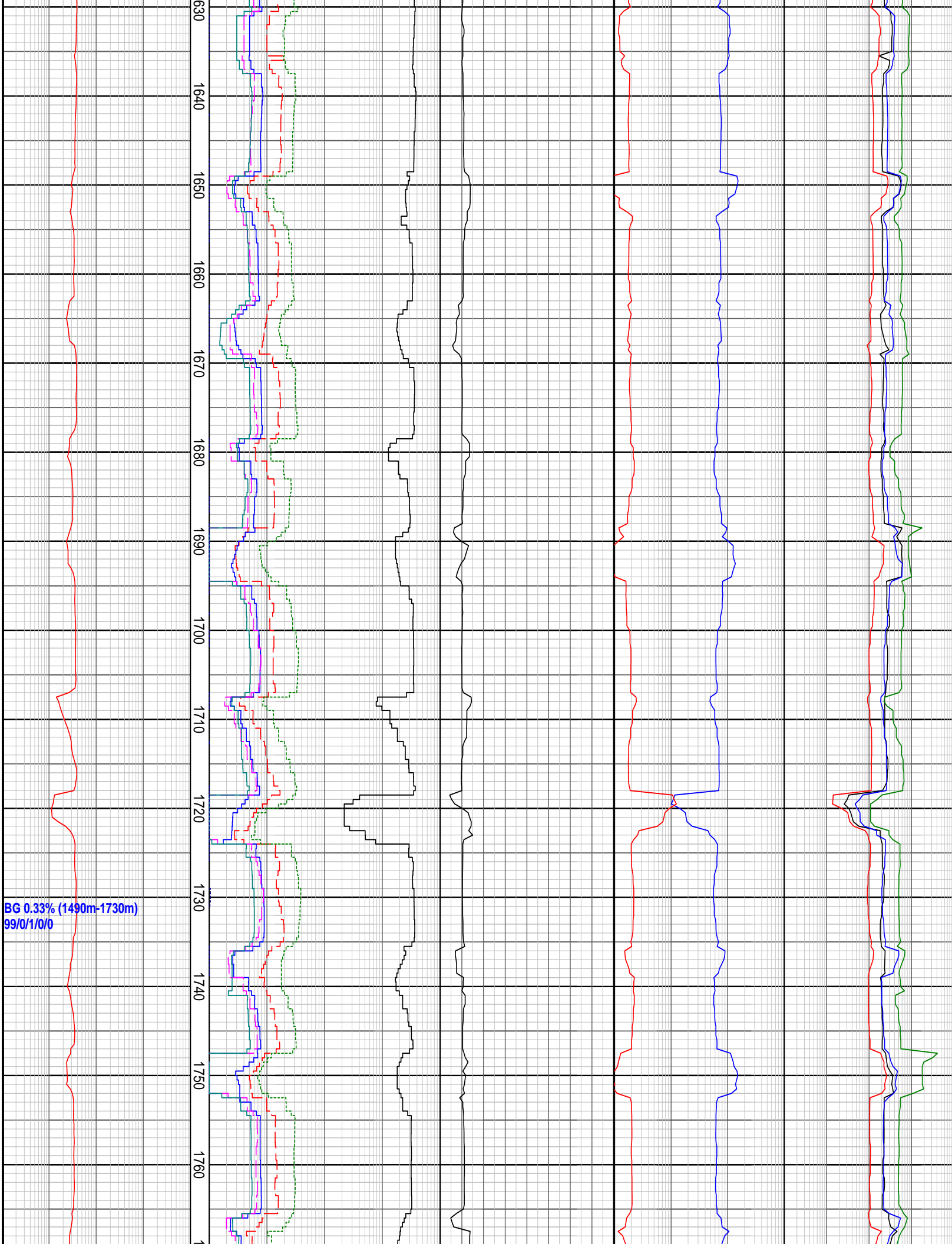


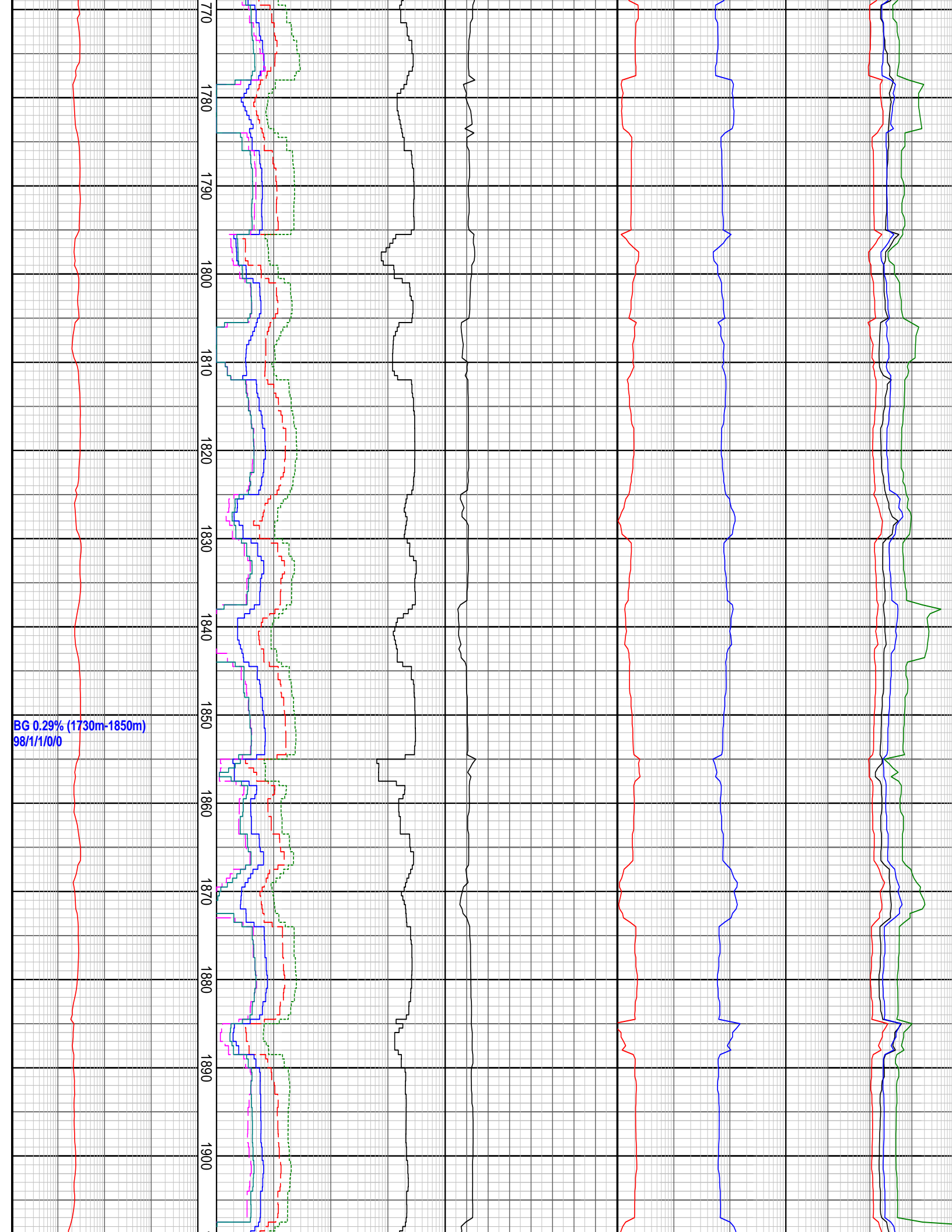




BG 0.35% (1430m-1490m)
99/0/1/0/0



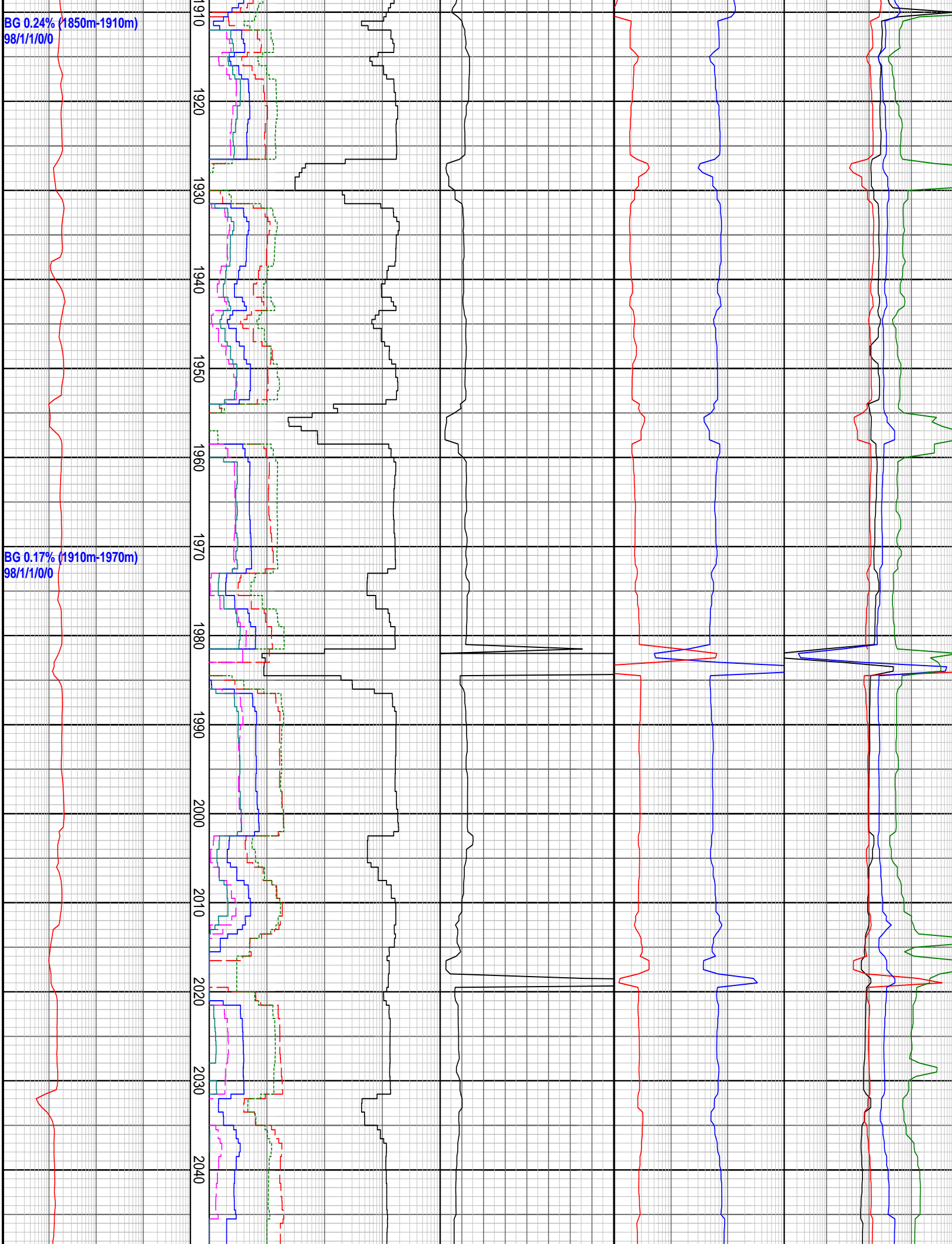


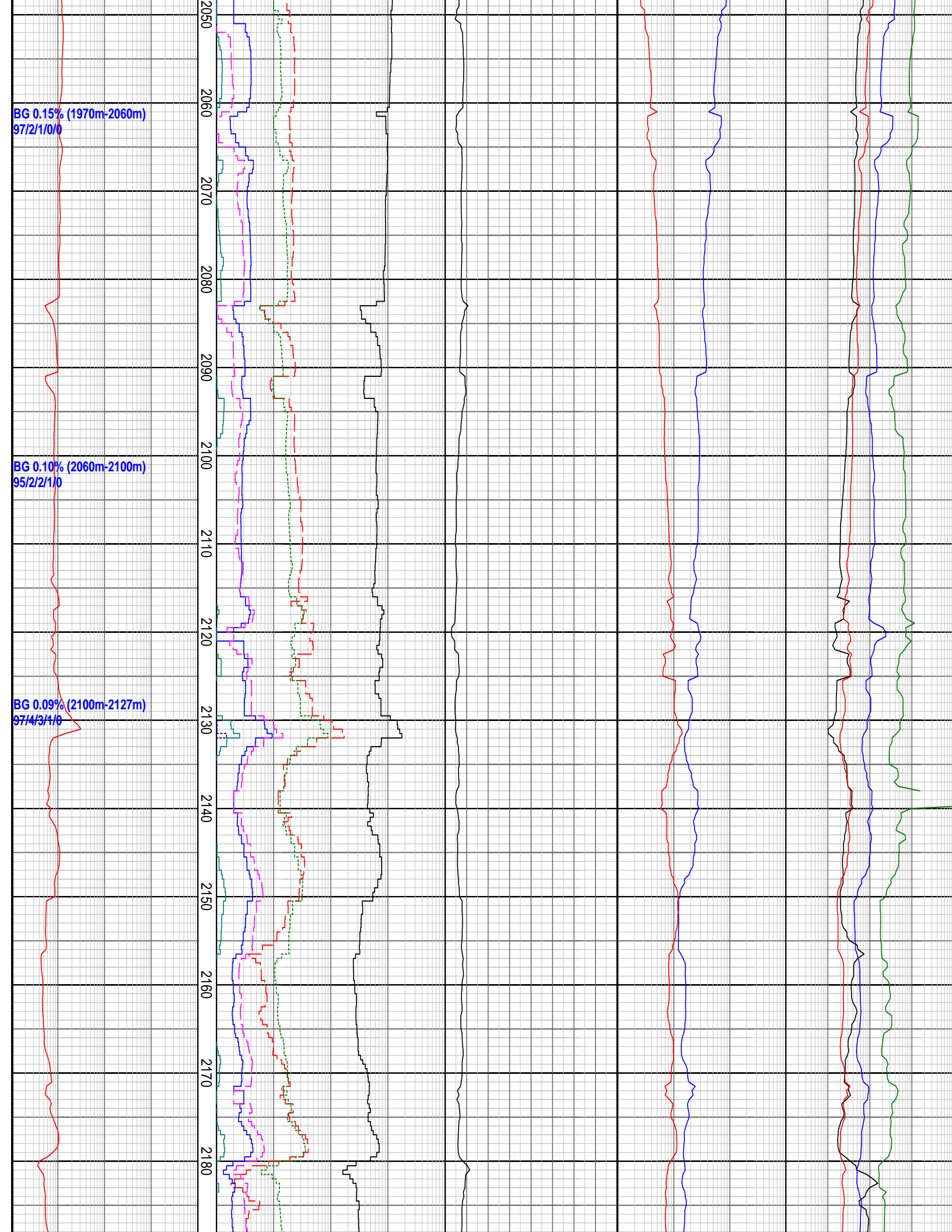


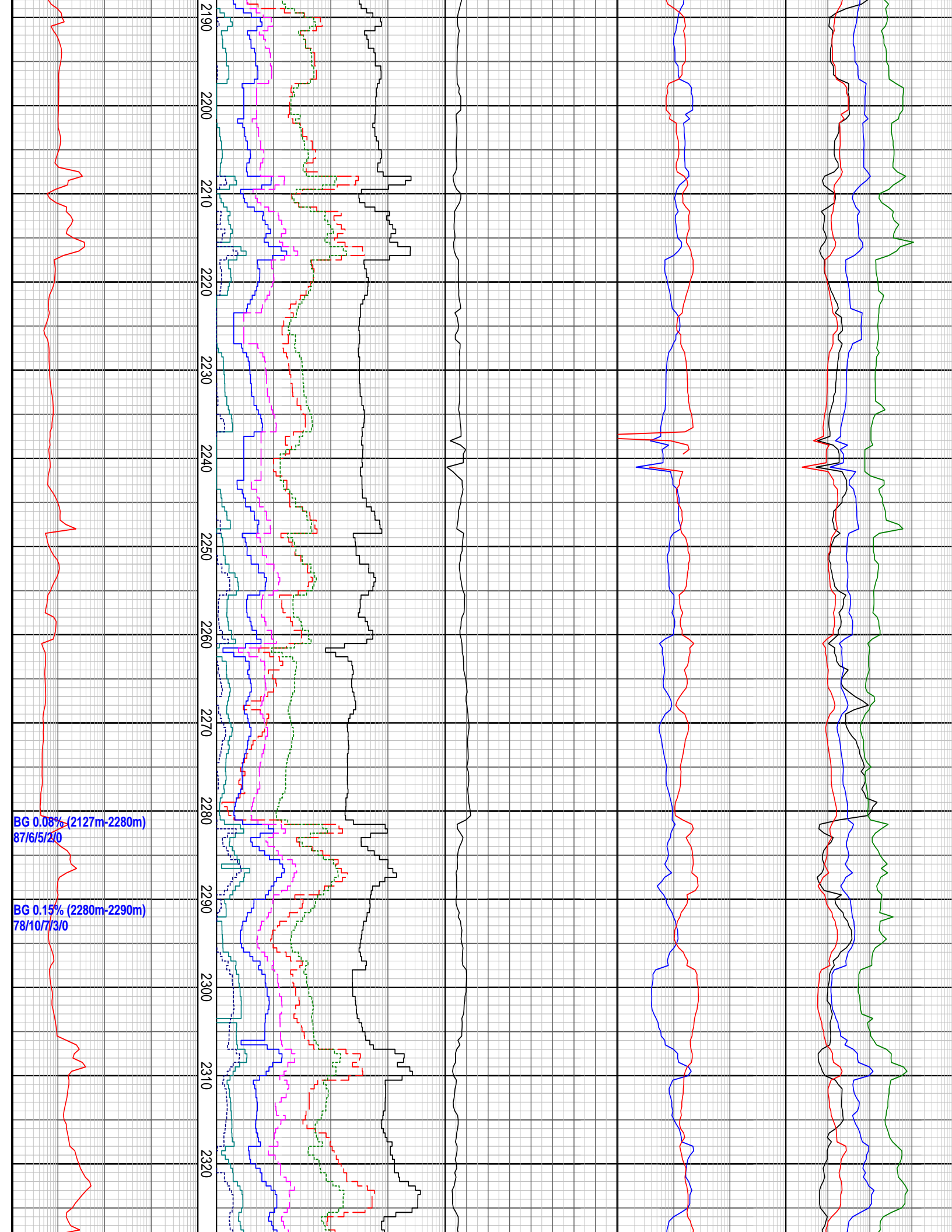
BG 0.24% (1850m-1910m)
98/1/1/0/0

1910
1920
1930
1940
1950
1960
1970
1980
1990
2000
2010
2020
2030
2040

BG 0.17% (1910m-1970m)
98/1/1/0/0

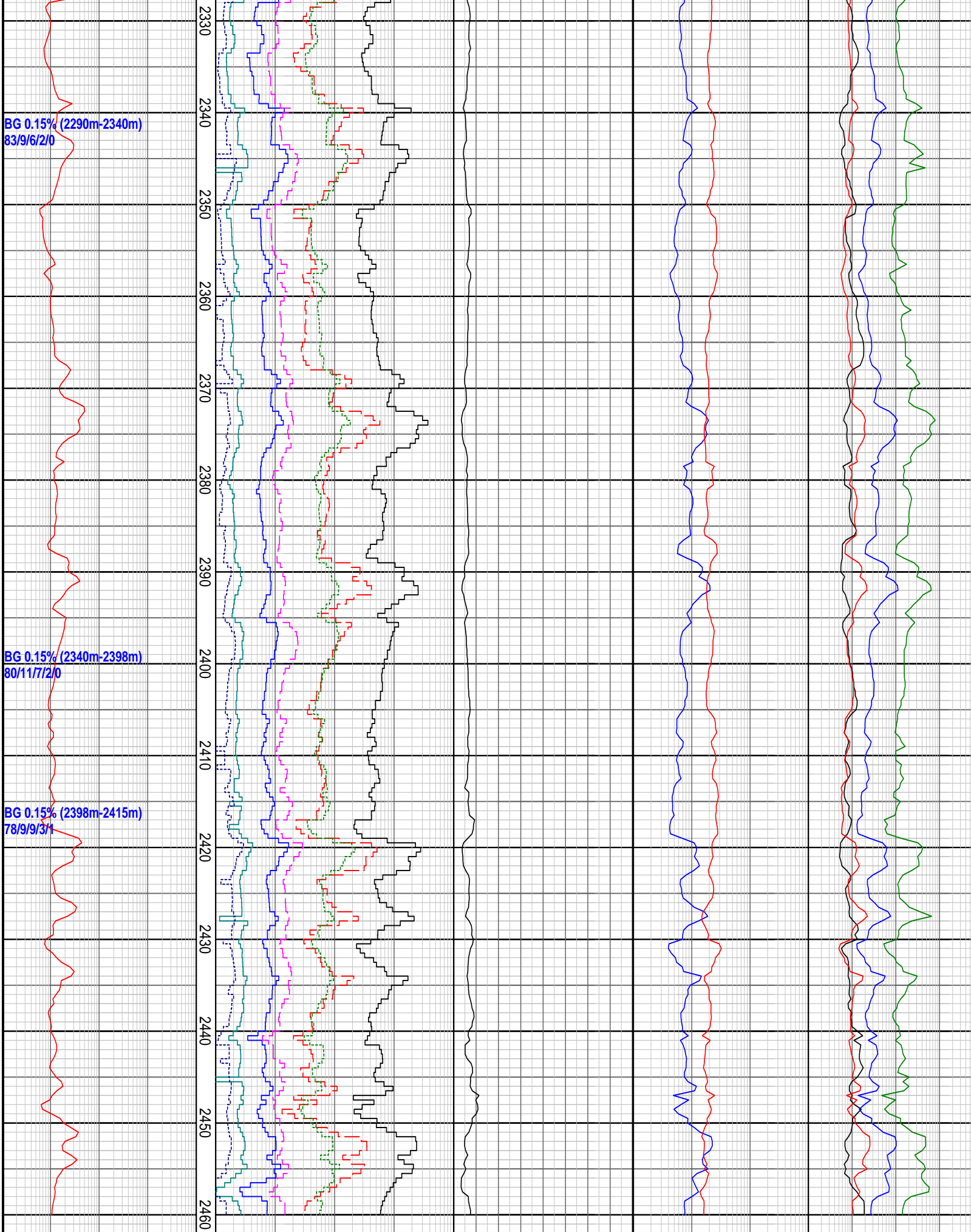






BG 0.08% (2127m-2280m)
87/6/5/2/0

BG 0.15% (2280m-2290m)
78/10/7/3/0



BG 0.15% (2290m-2340m)
83/9/6/2/0

BG 0.15% (2340m-2398m)
80/11/7/2/0

BG 0.15% (2398m-2415m)
78/9/9/3/1

2330
2340
2350
2380
2370
2380
2390
2400
2410
2420
2430
2440
2450
2460

