

# Bazzard-1 RT 500MD Log

Format: Bazzard\_1 ARCSonic RT Log

Vertical Scale: 1:500

Graphics File Created: 02-Oct-2008 00:47

## Parameters

DLIS Name	Description	Value
DO	Depth Offset	0.0 m

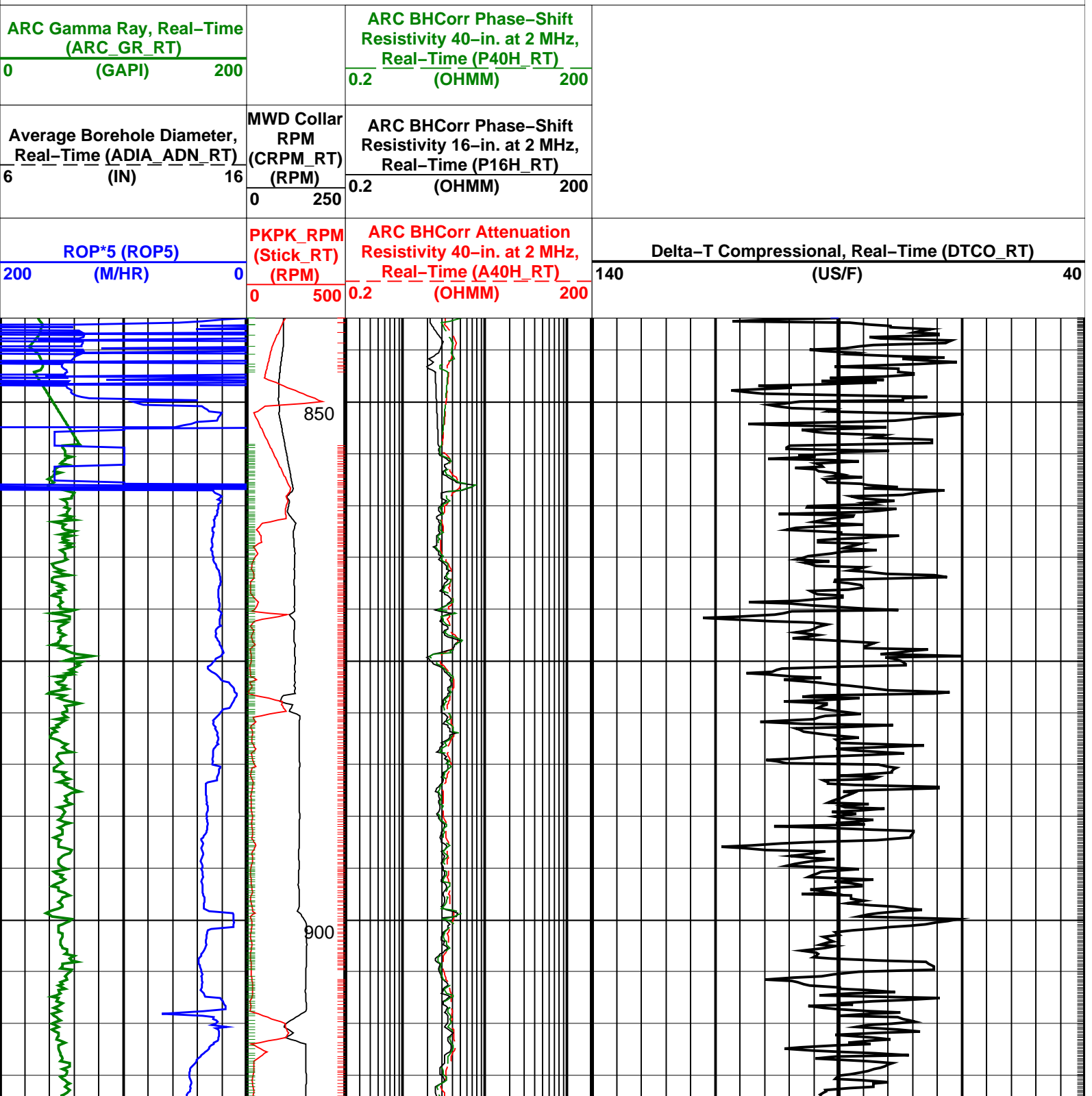
### PIP SUMMARY

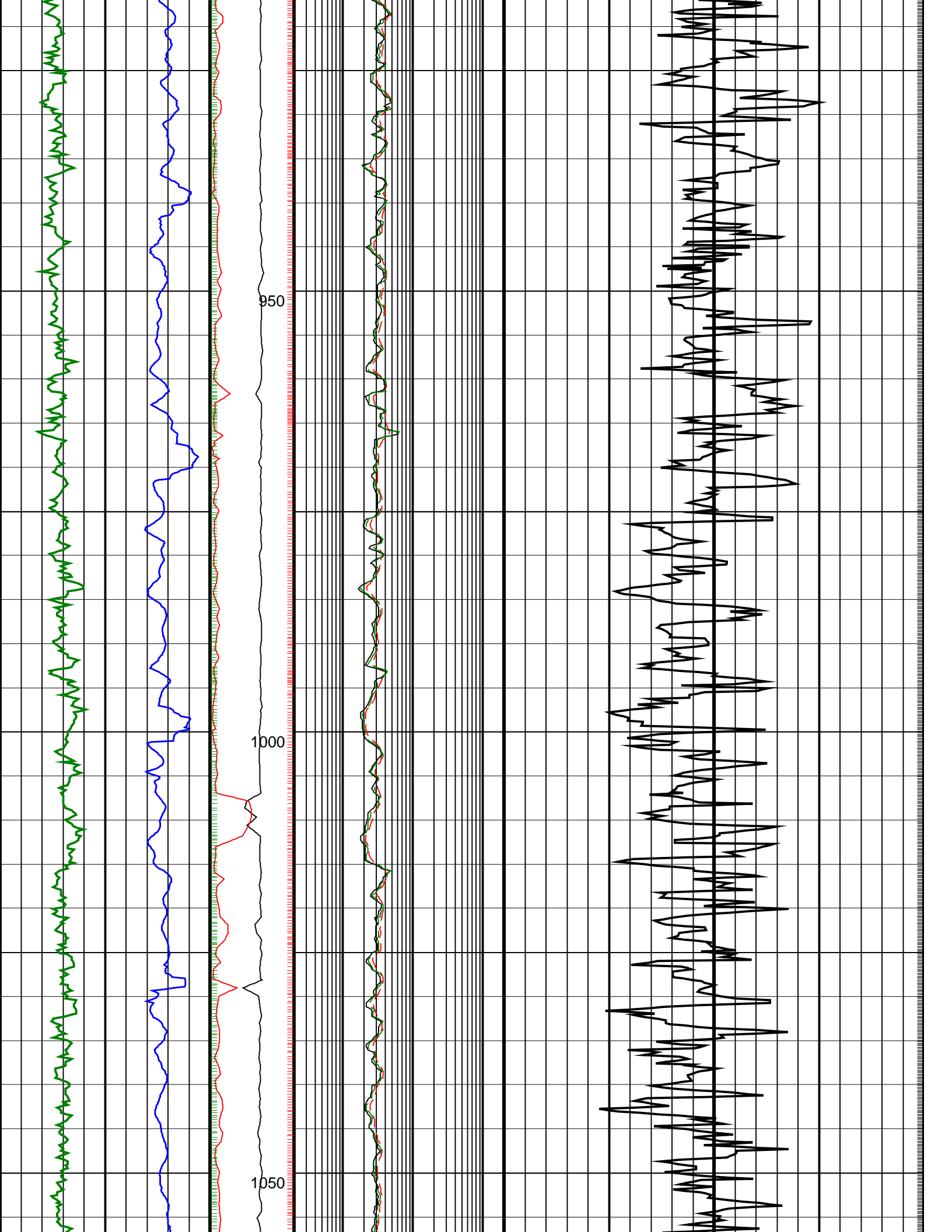
┆ Gamma Ray Samples

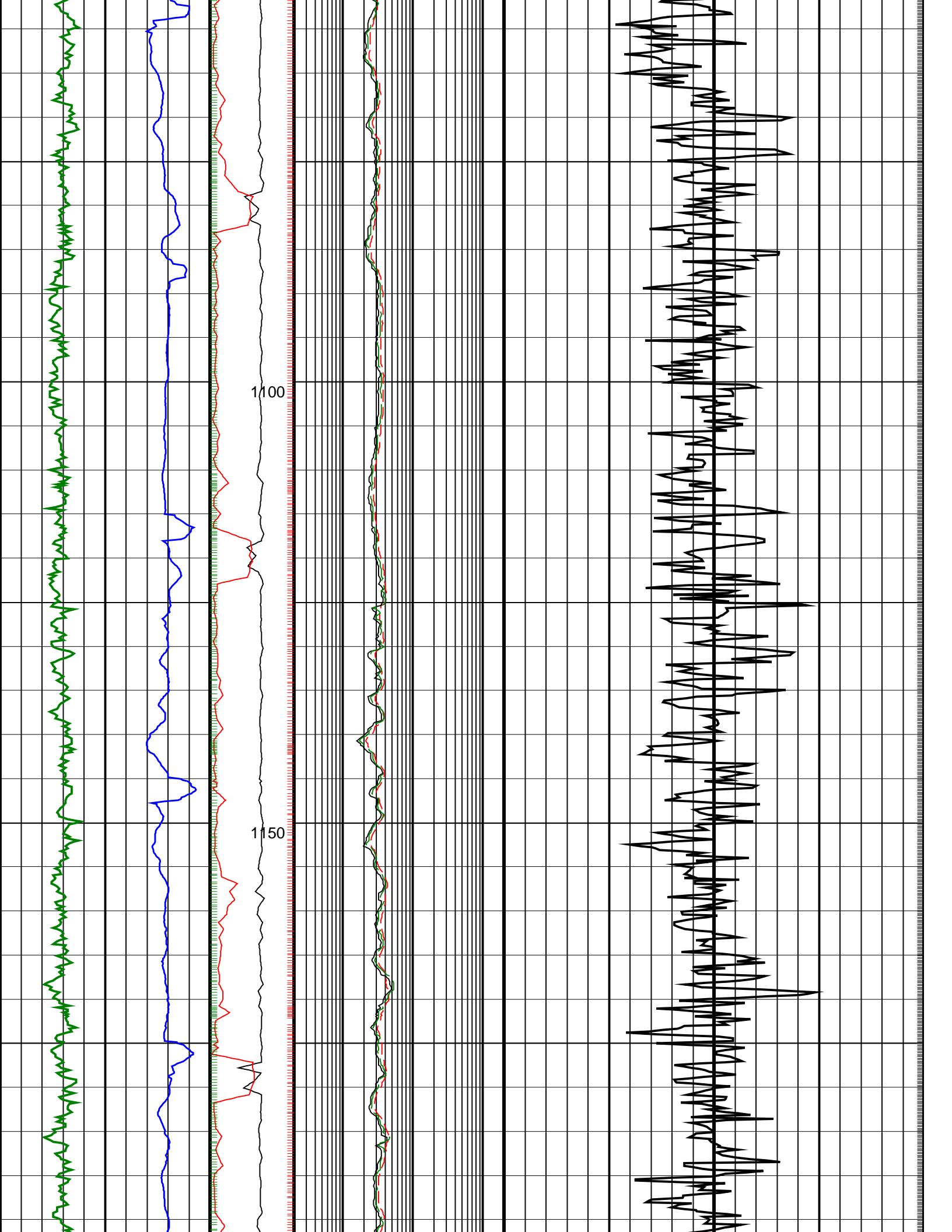
Delta-T Samples ┆

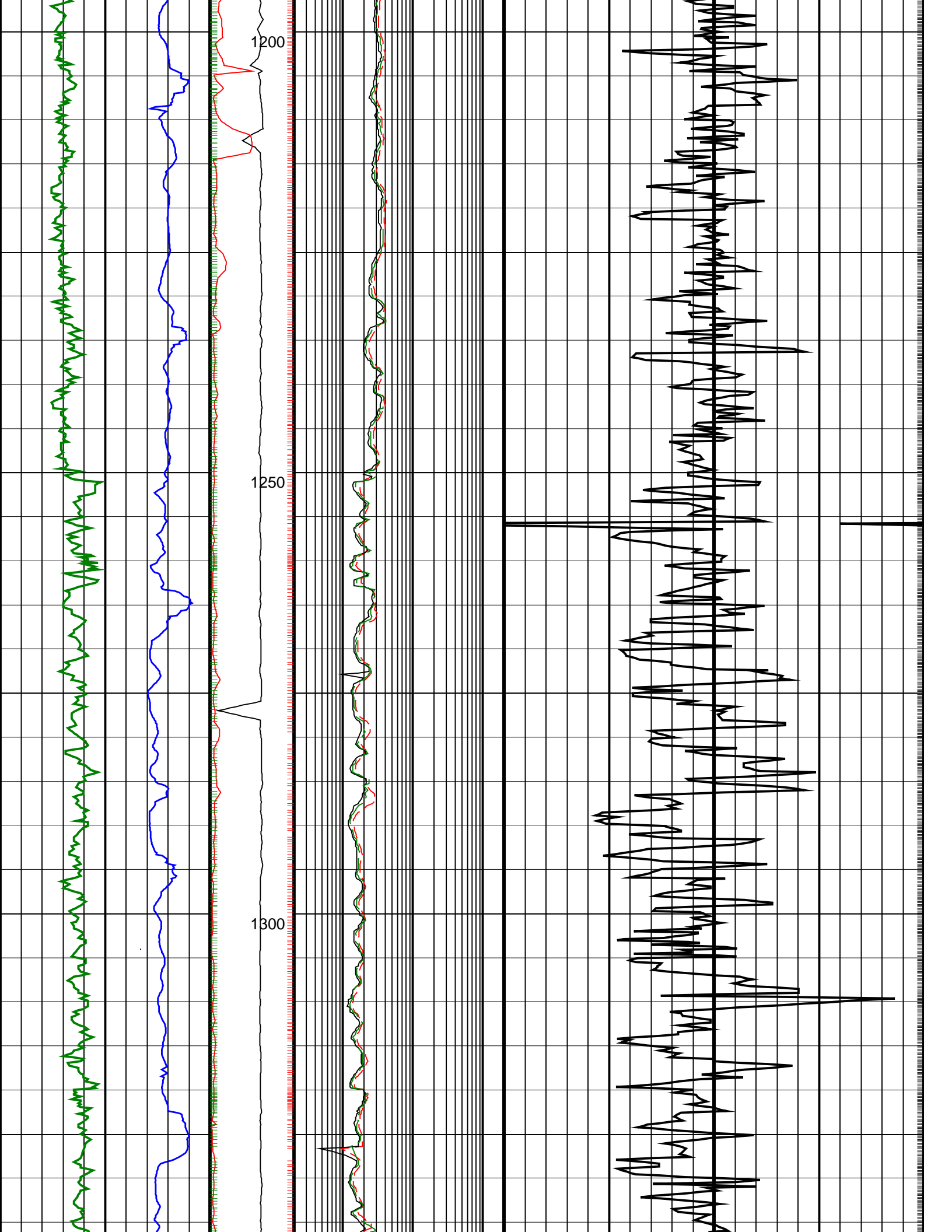
┆ Resistivity Samples

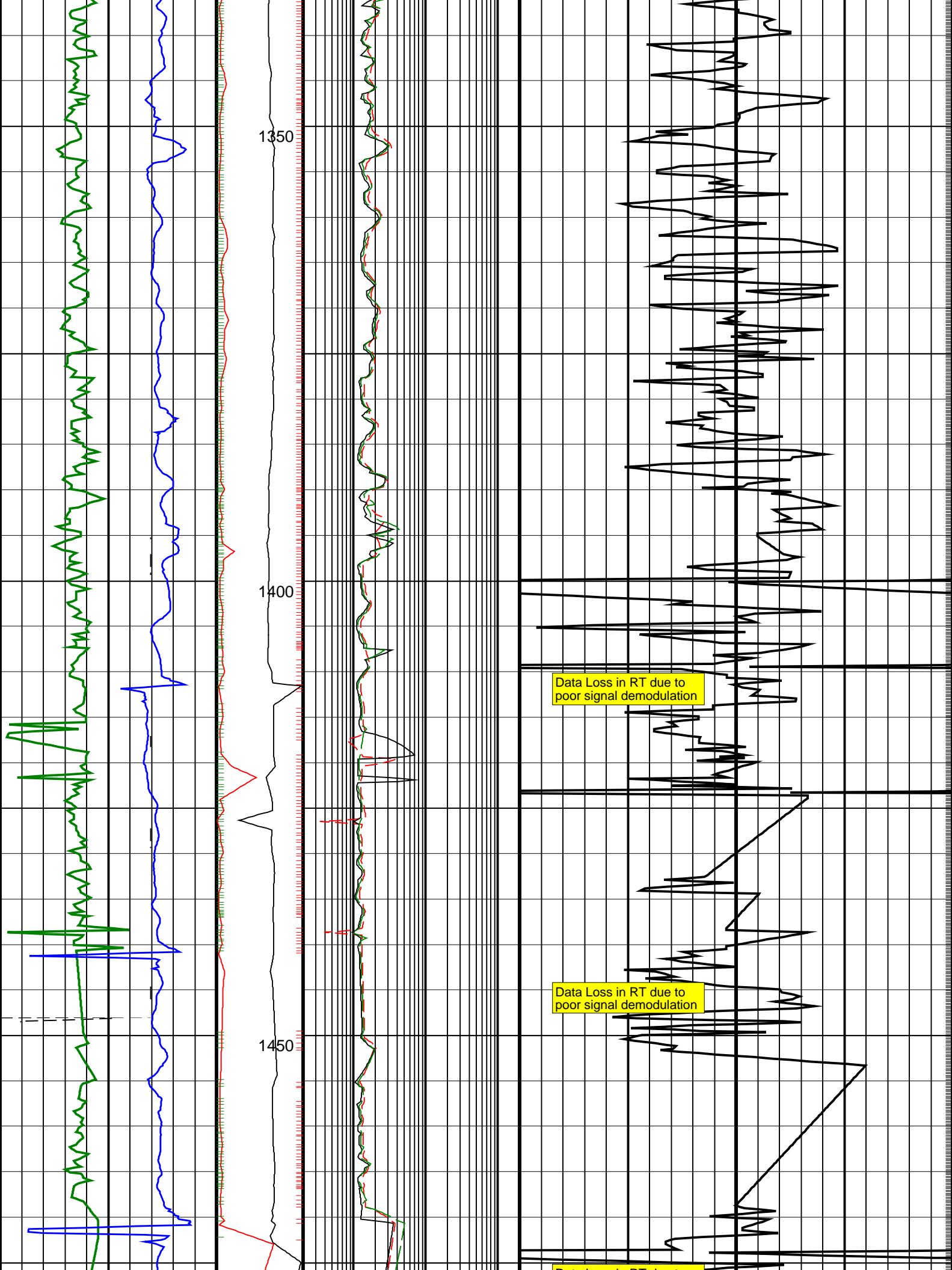
Neutron Samples ┆











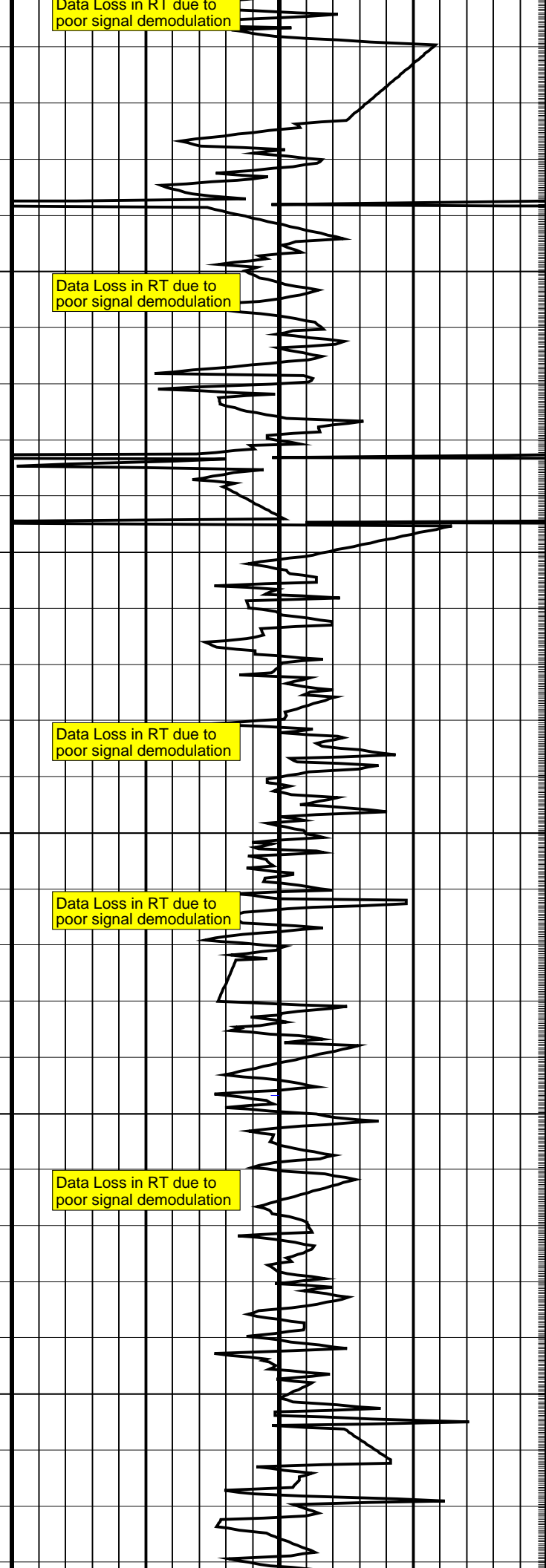
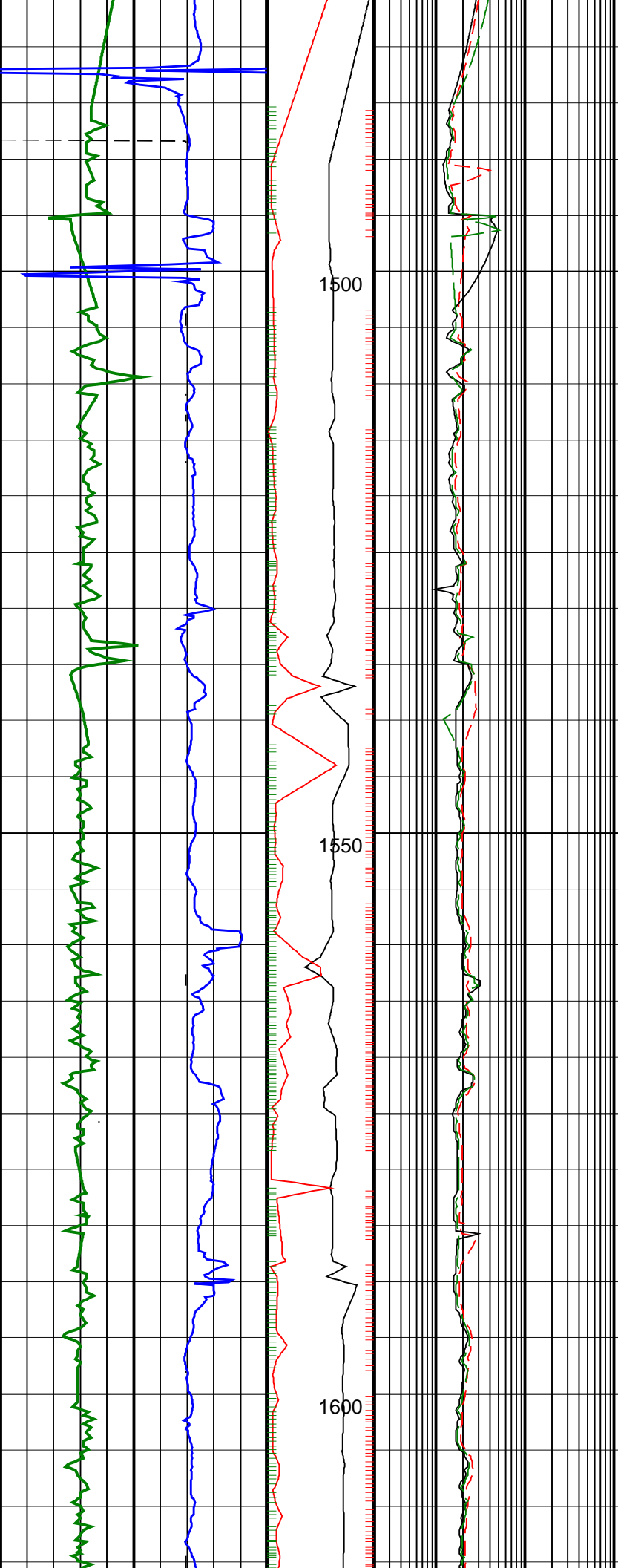
1350

1400

1450

Data Loss in RT due to poor signal demodulation

Data Loss in RT due to poor signal demodulation



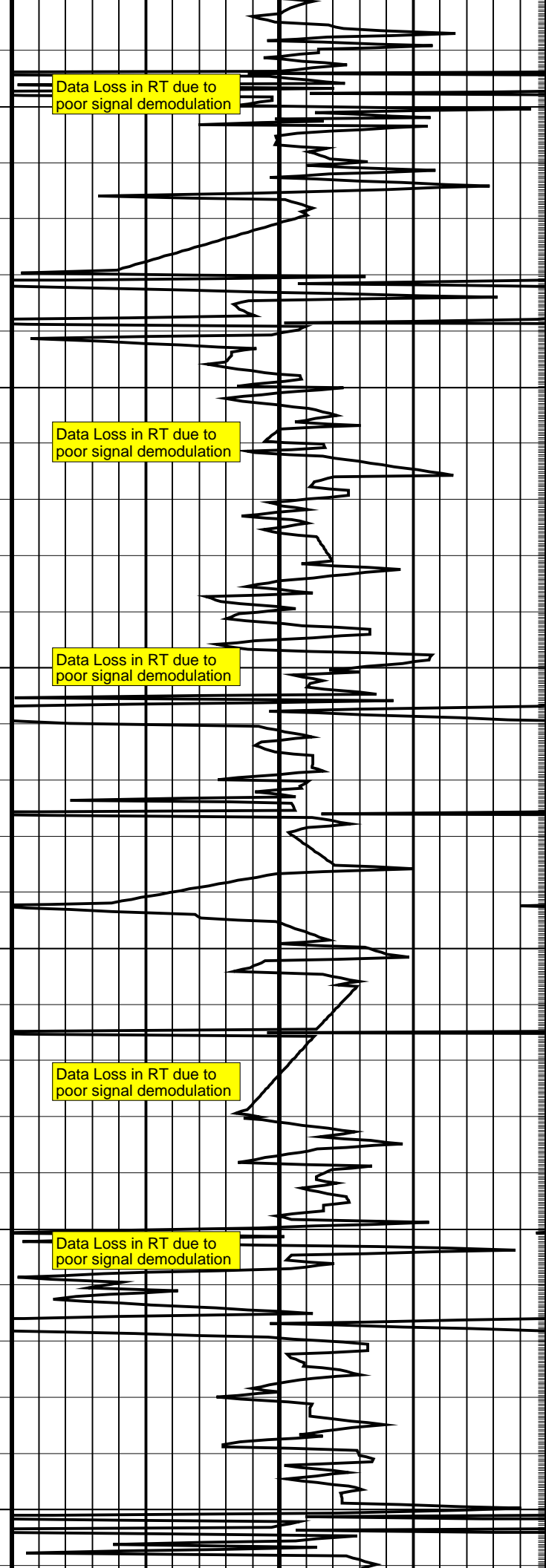
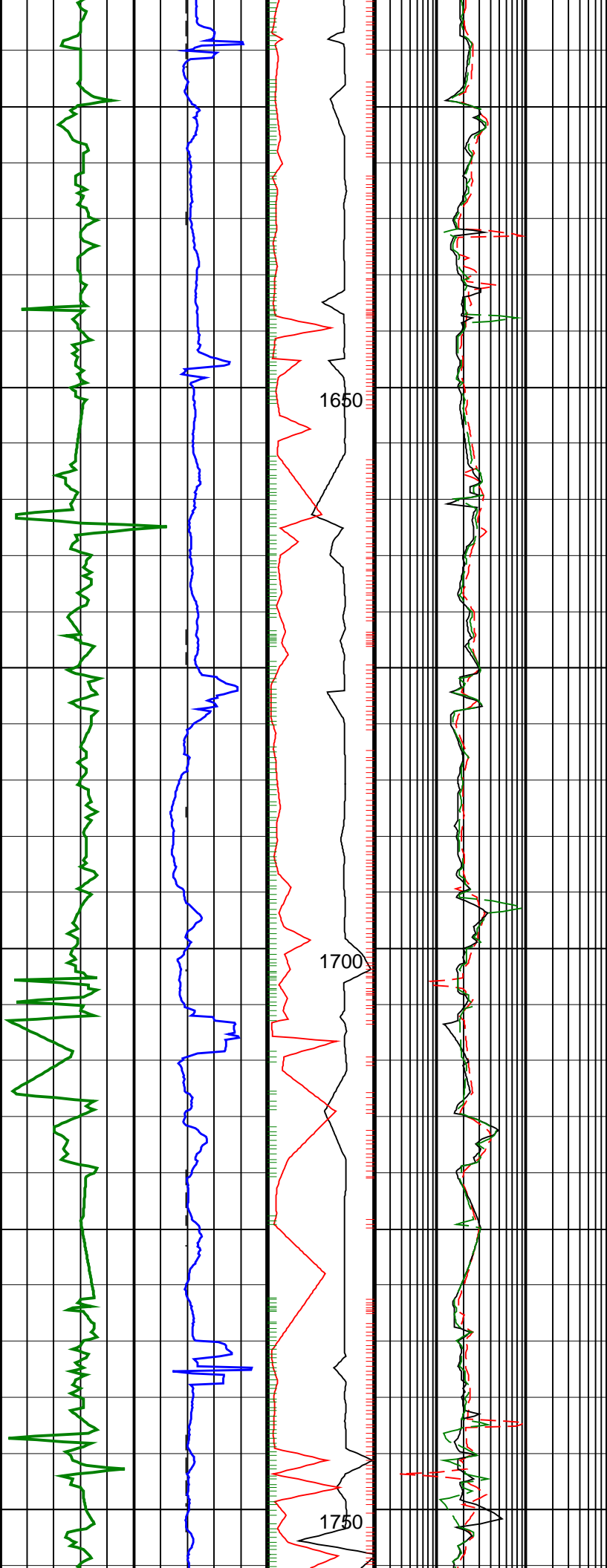
Data Loss in RT due to poor signal demodulation

Data Loss in RT due to poor signal demodulation

Data Loss in RT due to poor signal demodulation

Data Loss in RT due to poor signal demodulation

Data Loss in RT due to poor signal demodulation



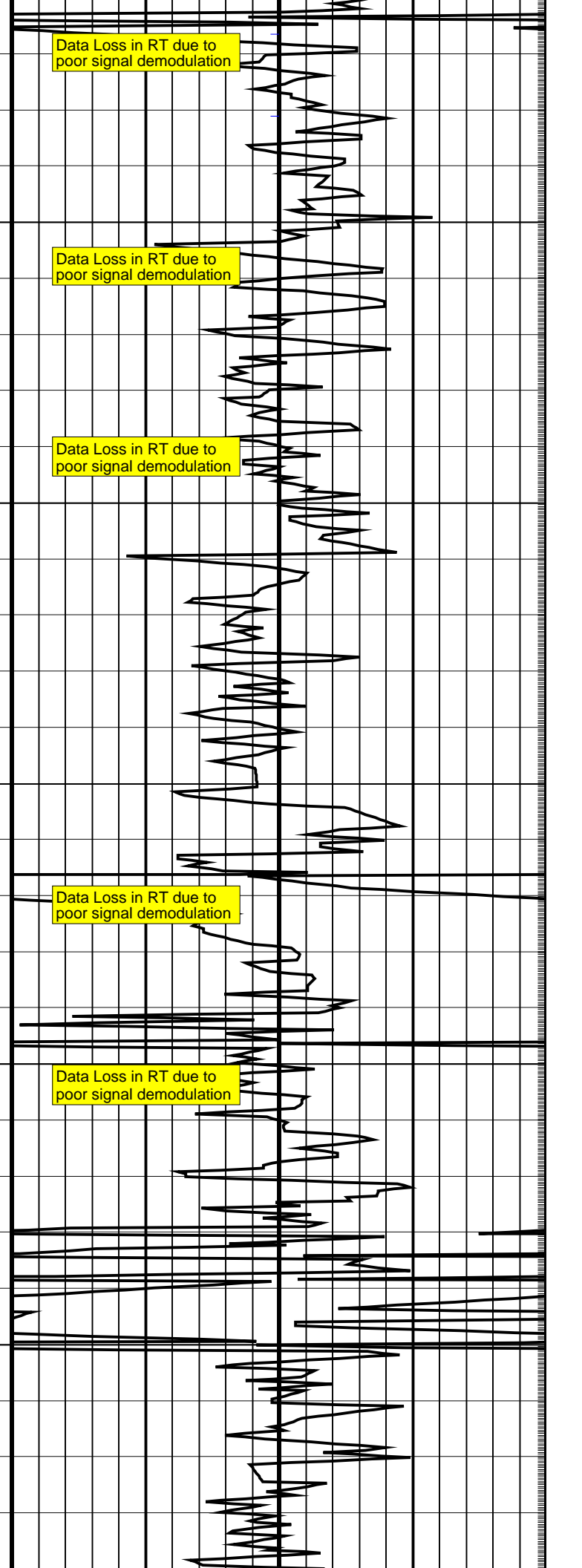
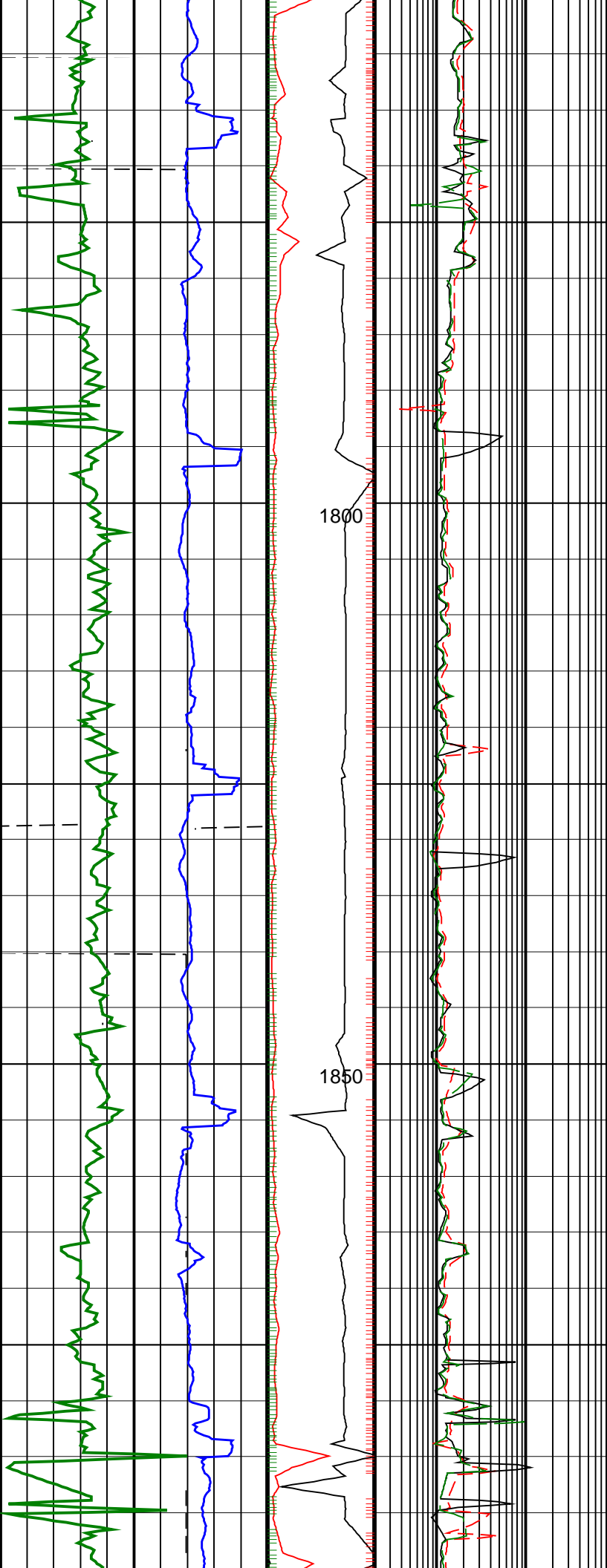
Data Loss in RT due to poor signal demodulation

Data Loss in RT due to poor signal demodulation

Data Loss in RT due to poor signal demodulation

Data Loss in RT due to poor signal demodulation

Data Loss in RT due to poor signal demodulation



Data Loss in RT due to poor signal demodulation

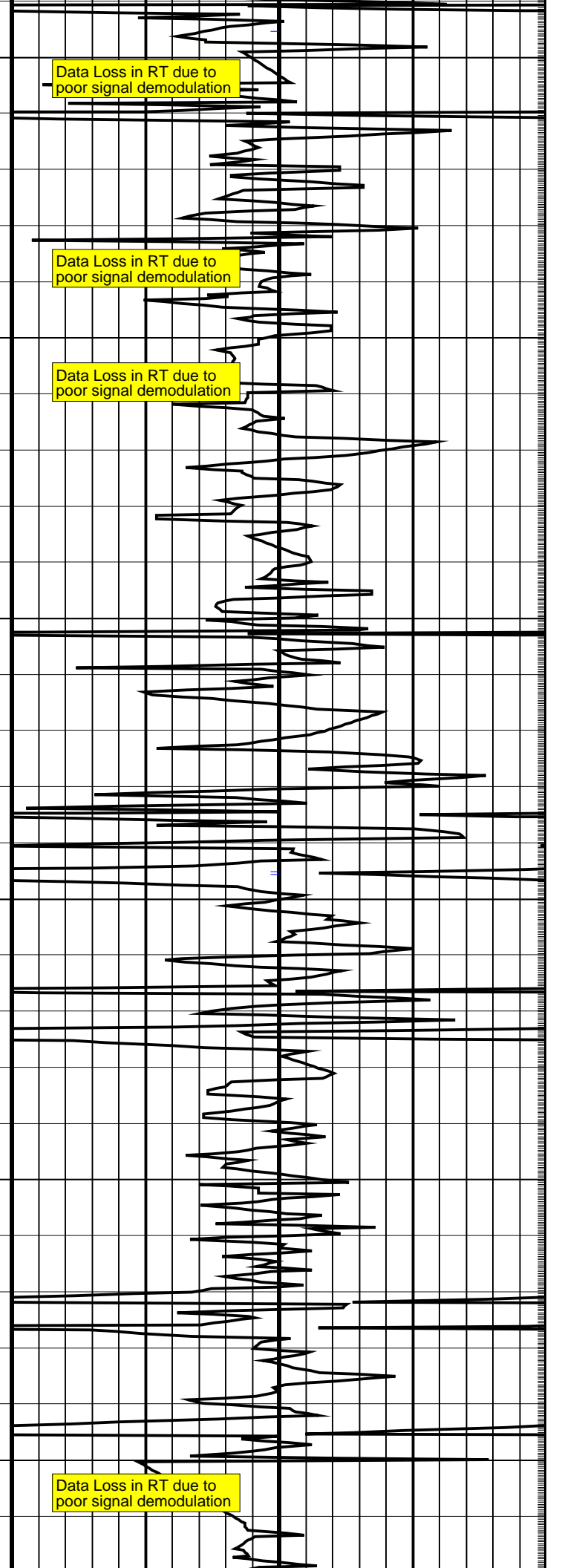
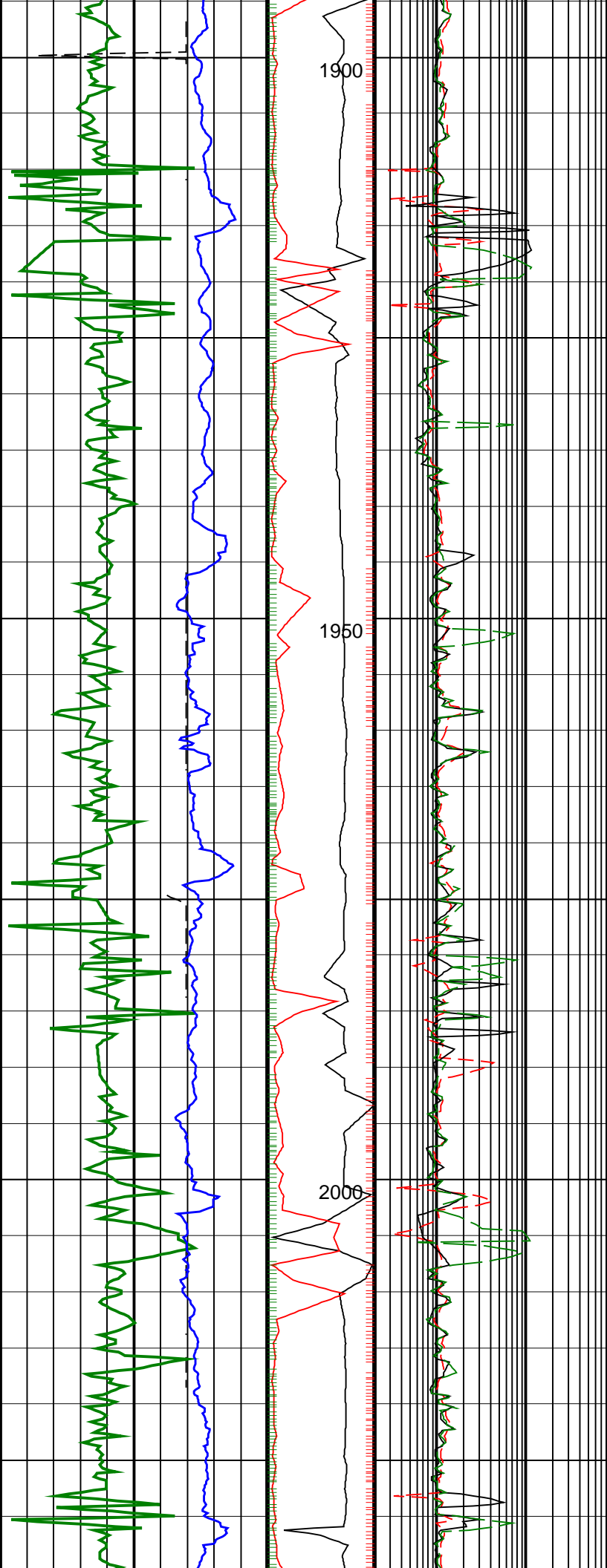
Data Loss in RT due to poor signal demodulation

Data Loss in RT due to poor signal demodulation

Data Loss in RT due to poor signal demodulation

Data Loss in RT due to poor signal demodulation



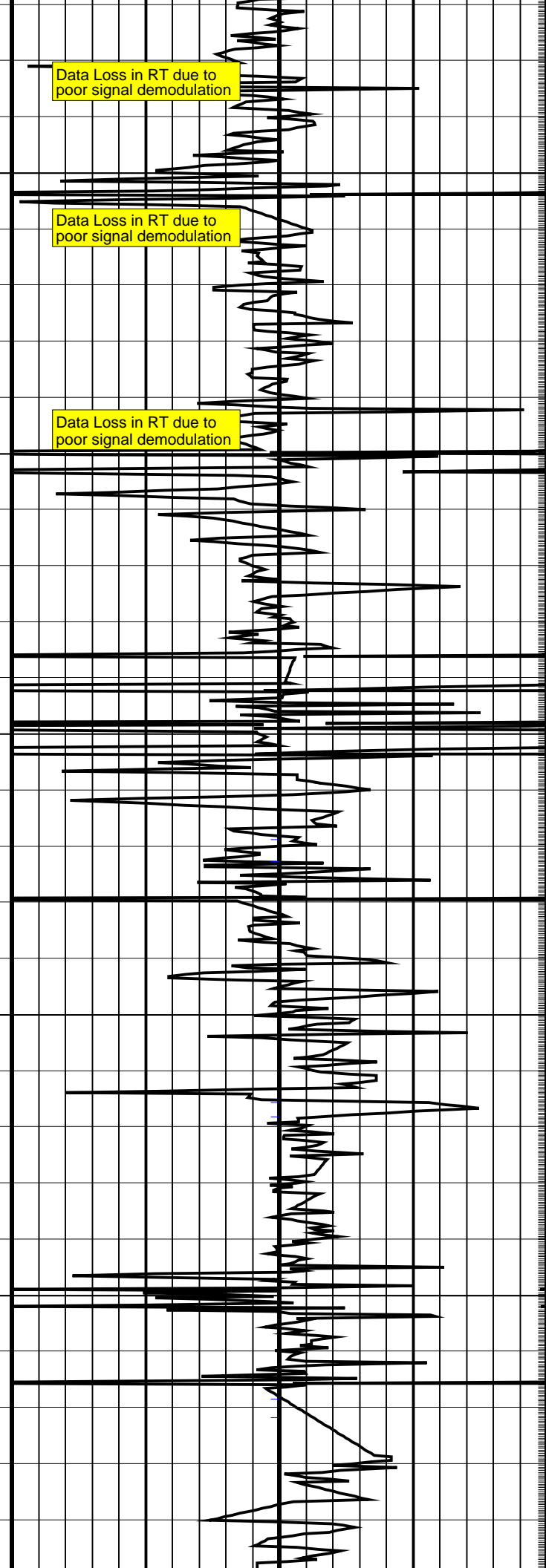
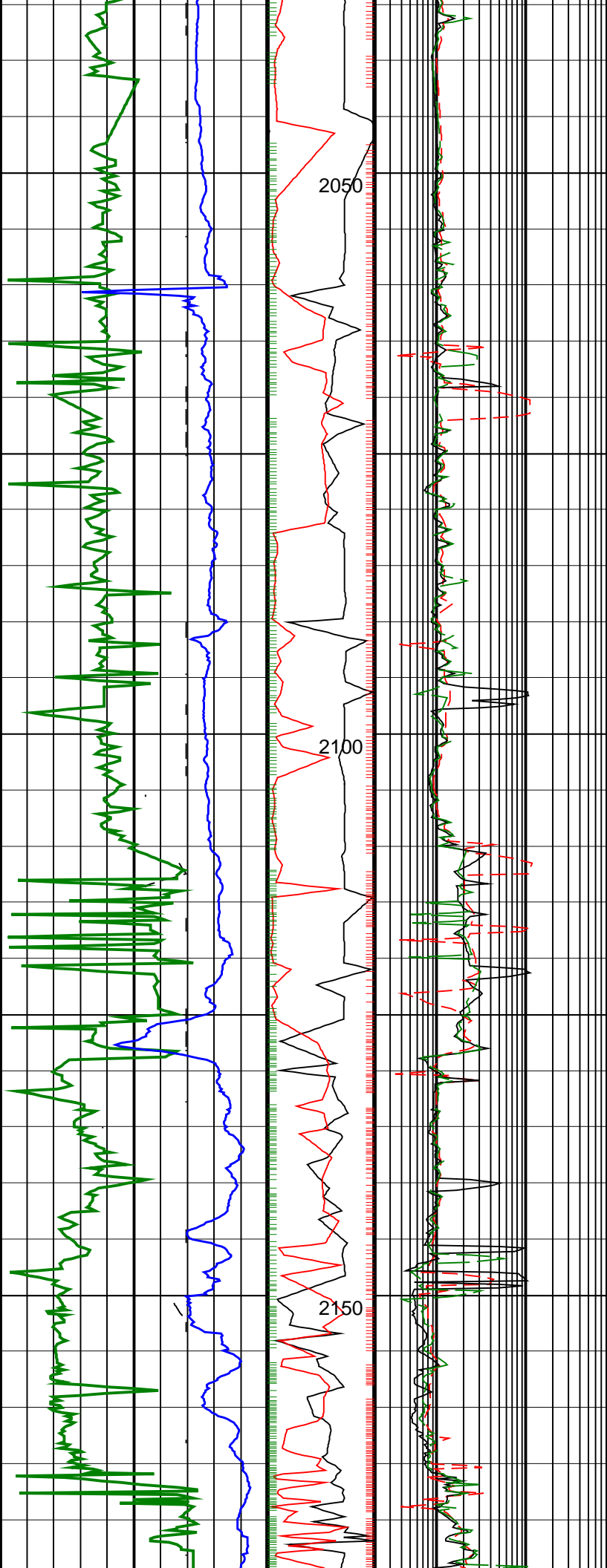


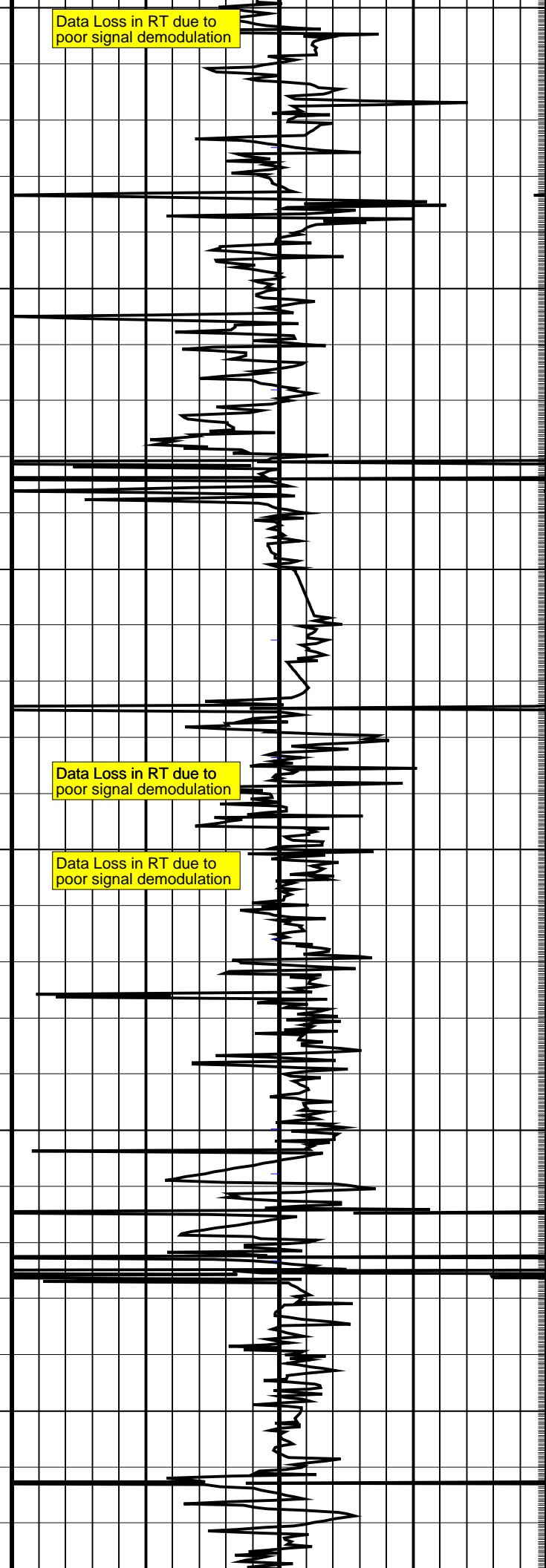
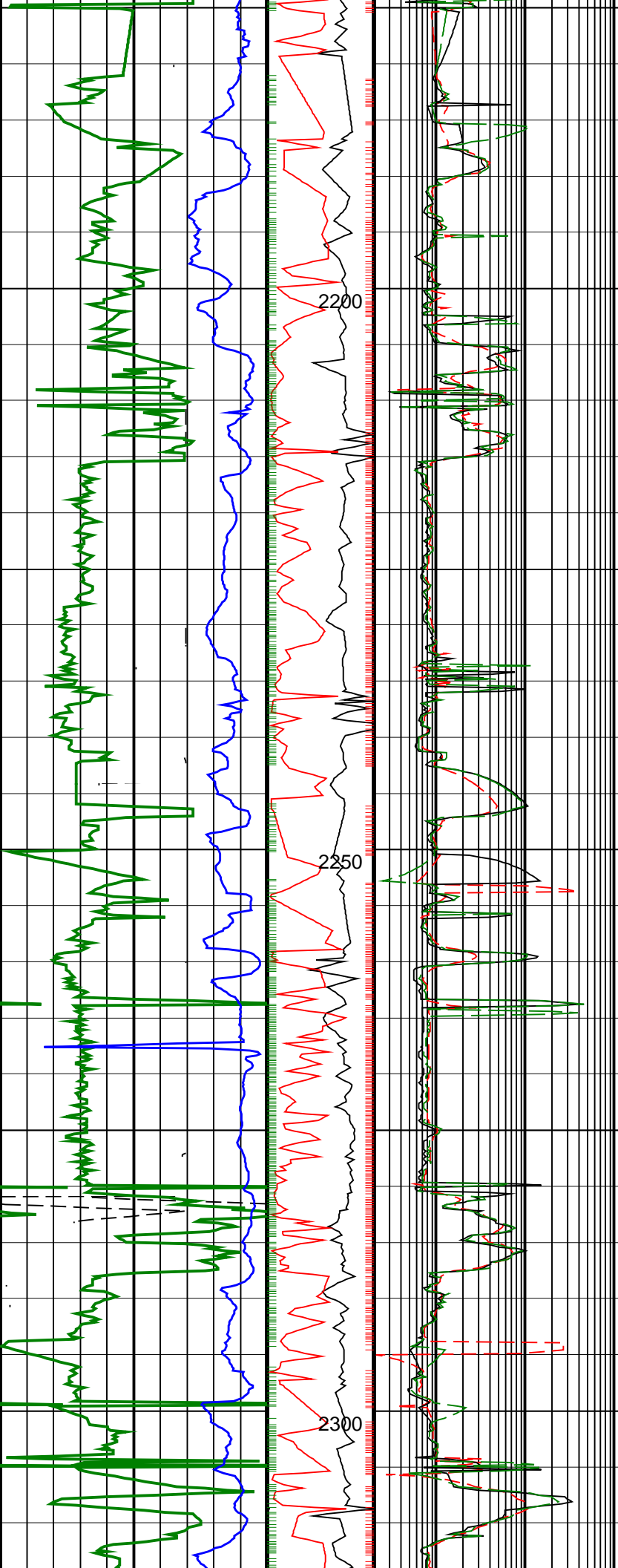
Data Loss in RT due to poor signal demodulation

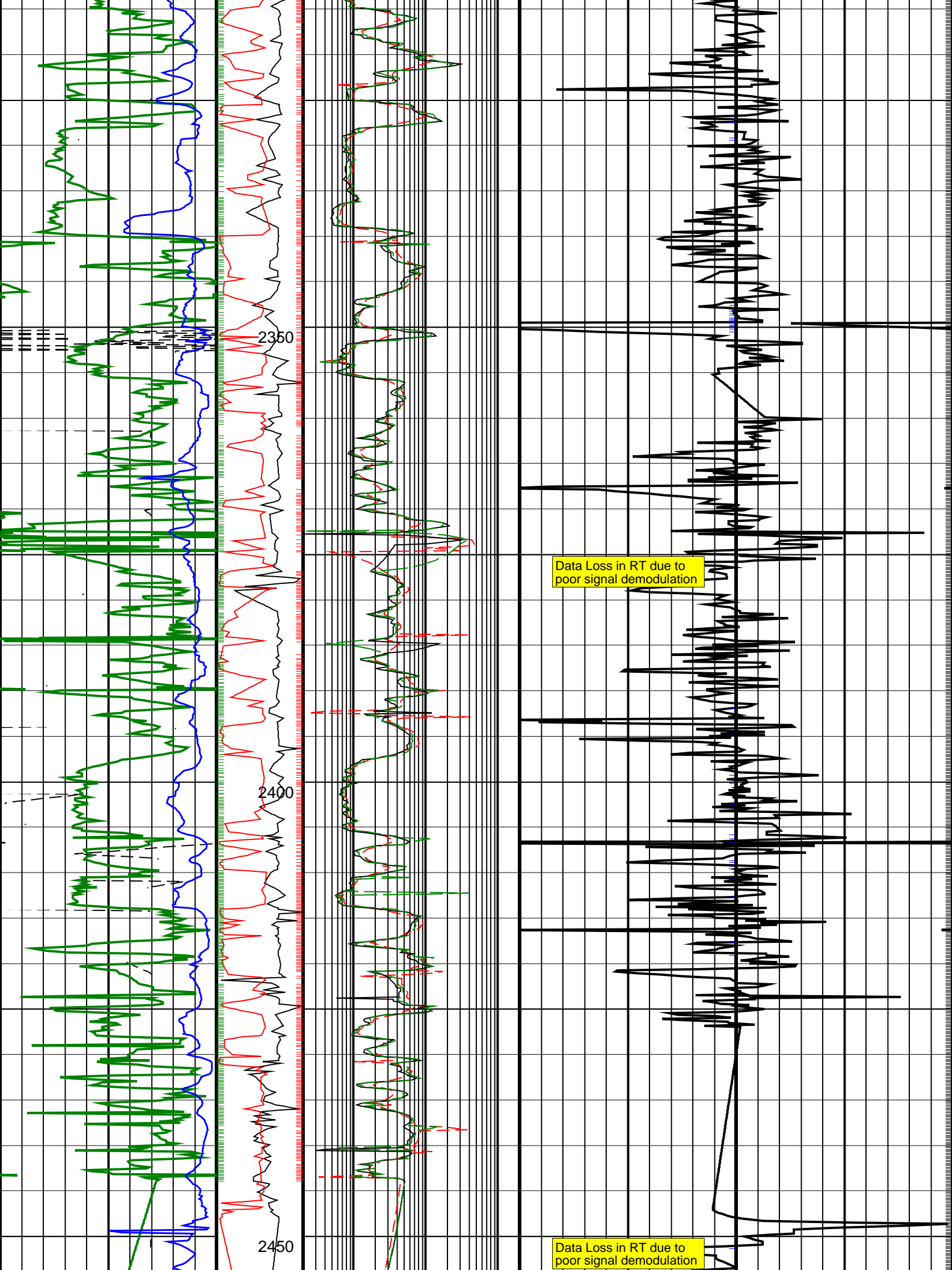
Data Loss in RT due to poor signal demodulation

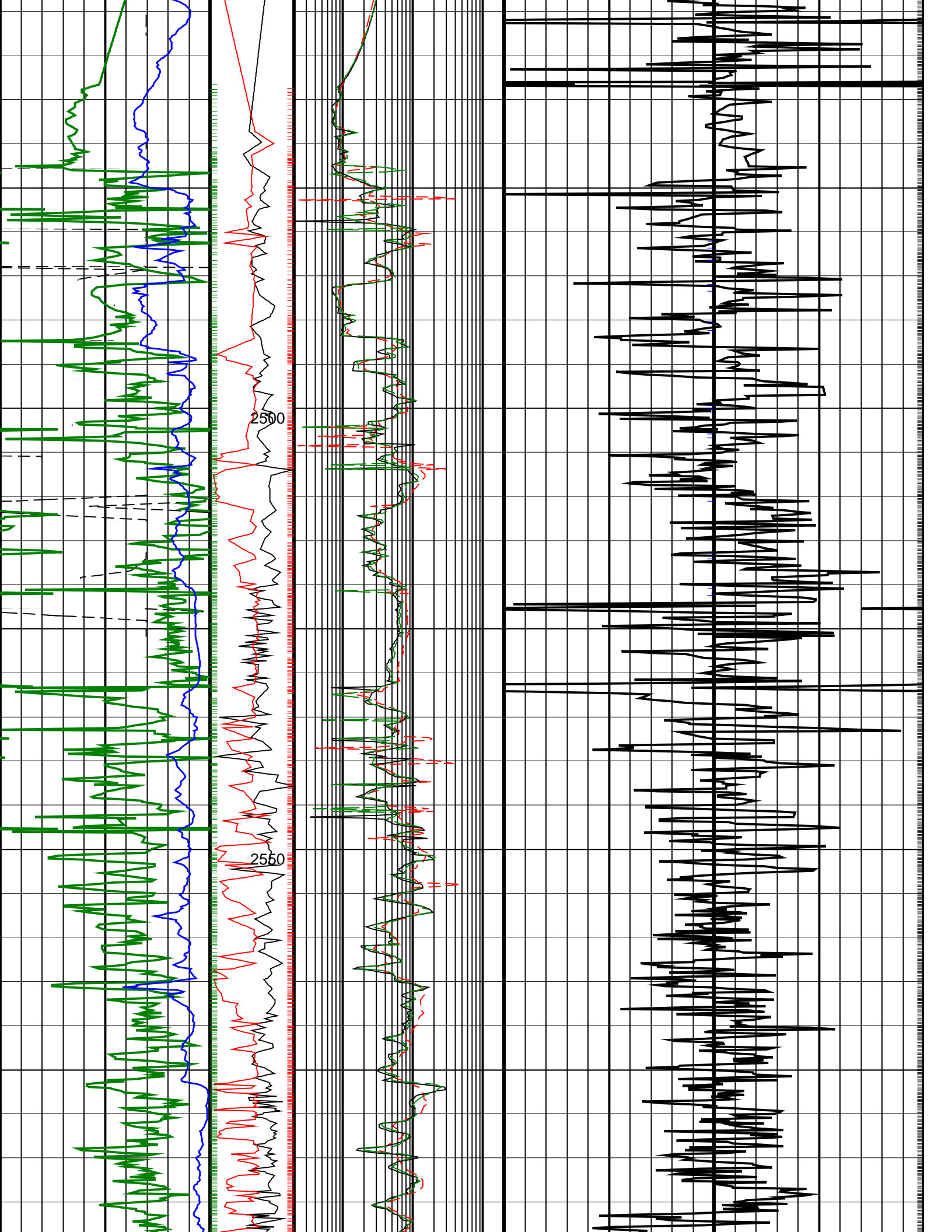
Data Loss in RT due to poor signal demodulation

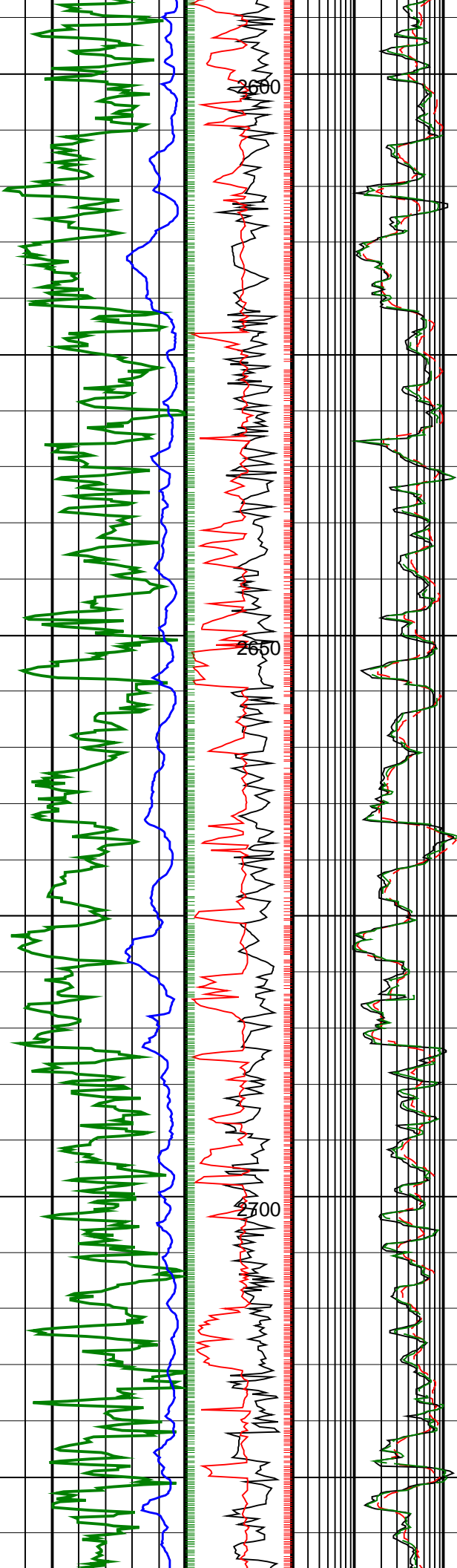
Data Loss in RT due to poor signal demodulation



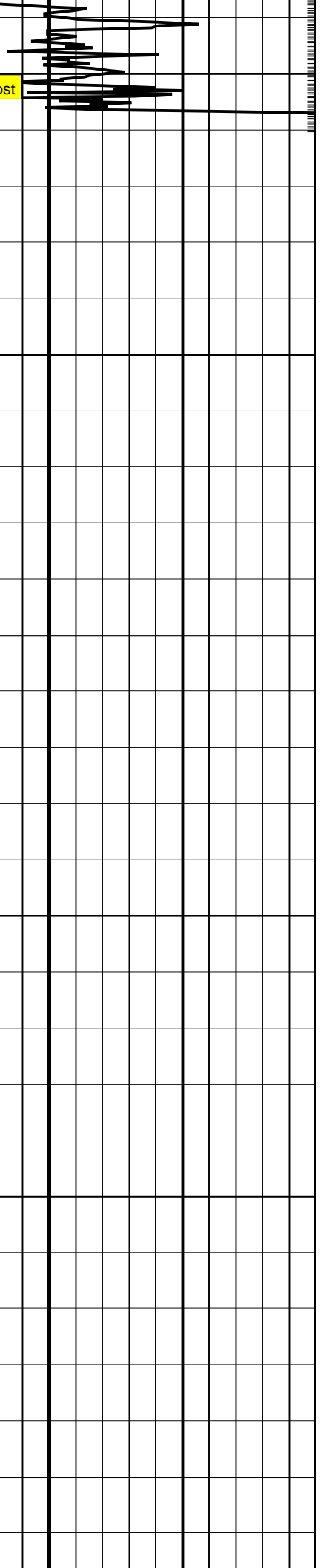


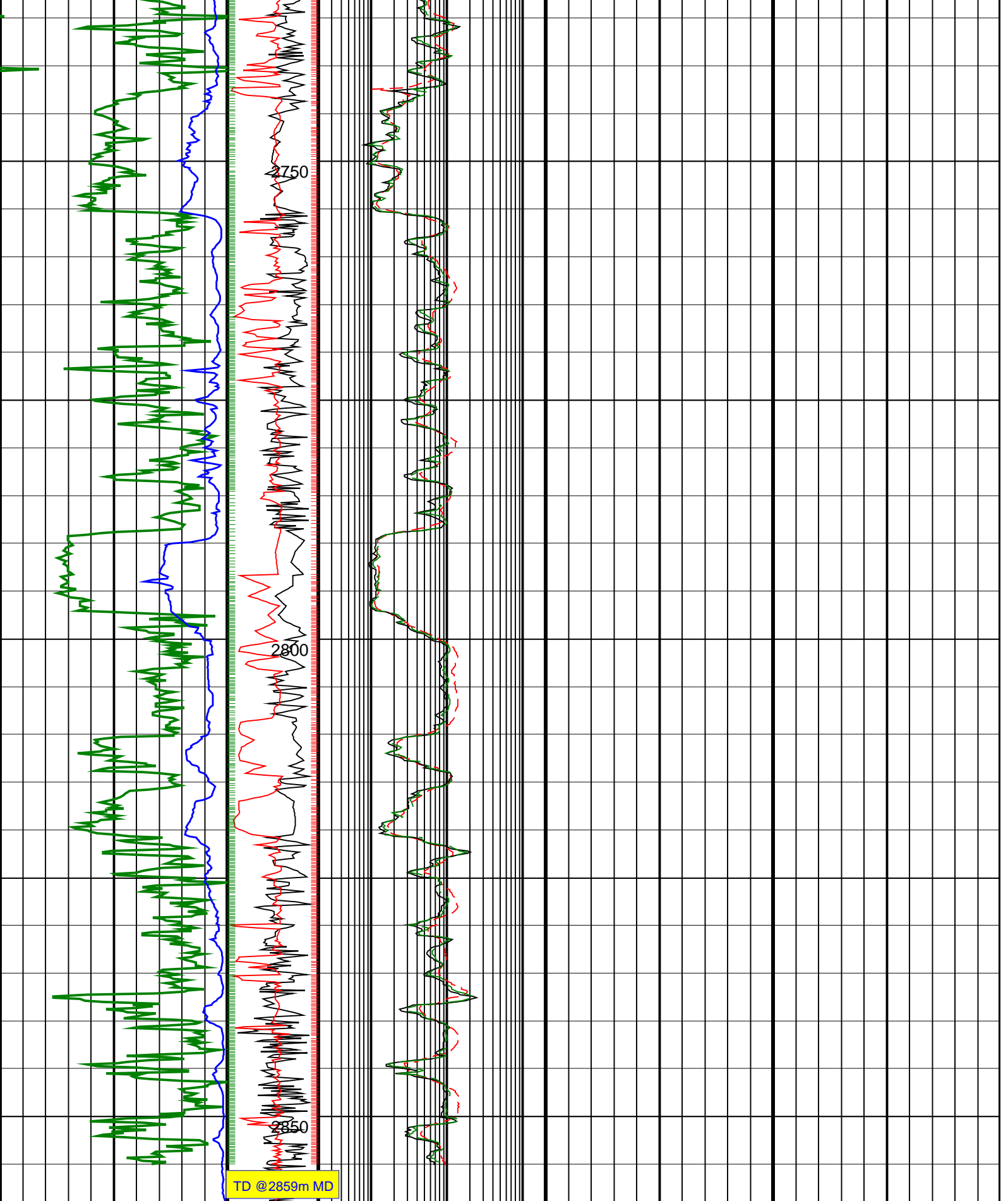






Sonic RT communication lost





TD @2859m MD

<p><b>ROP*5 (ROP5)</b> (M/HR)</p> <p>0</p>	<p><b>PKPK RPM</b> (Stick_RT) (RPM)</p> <p>0 500</p>	<p><b>ARC BHCorr Attenuation</b> Resistivity 40-in. at 2 MHz, Real-Time (A40H_RT)</p> <p>0.2 (OHMM) 200</p>	<p><b>Delta-T Compressional, Real-Time (DTCO_RT)</b> (US/F)</p> <p>140 40</p>
--	--	---	---

<p><b>Average Borehole Diameter,</b></p>	<p><b>MWD Collar RPM</b></p>	<p><b>ARC BHCorr Phase-Shift</b> Resistivity 16-in. at 2 MHz</p>	
--	------------------------------	--	--

Real-Time (ADIA_ADN_RT) (IN)	16 (CRPM_RT) (RPM)	Resistivity 10-in. at 2 MHz, Real-Time (P16H_RT)
6	0 250	0.2 (OHMM) 200
ARC Gamma Ray, Real-Time (ARC_GR_RT)		ARC BHCorr Phase-Shift Resistivity 40-in. at 2 MHz, Real-Time (P40H_RT)
0 (GAPI) 200		0.2 (OHMM) 200

PIP SUMMARY

└ Gamma Ray Samples

Delta-T Samples ─

└ Resistivity Samples

Neutron Samples ─

IDEAL Version: ID13\_0C\_11  
IDF