

IDEAL Version: ID13_0C_11

IDF

Format: VISION Service RM Log

Vertical Scale: 1:500

Graphics File Created: 03-Oct-2008 08:49

PIP SUMMARY

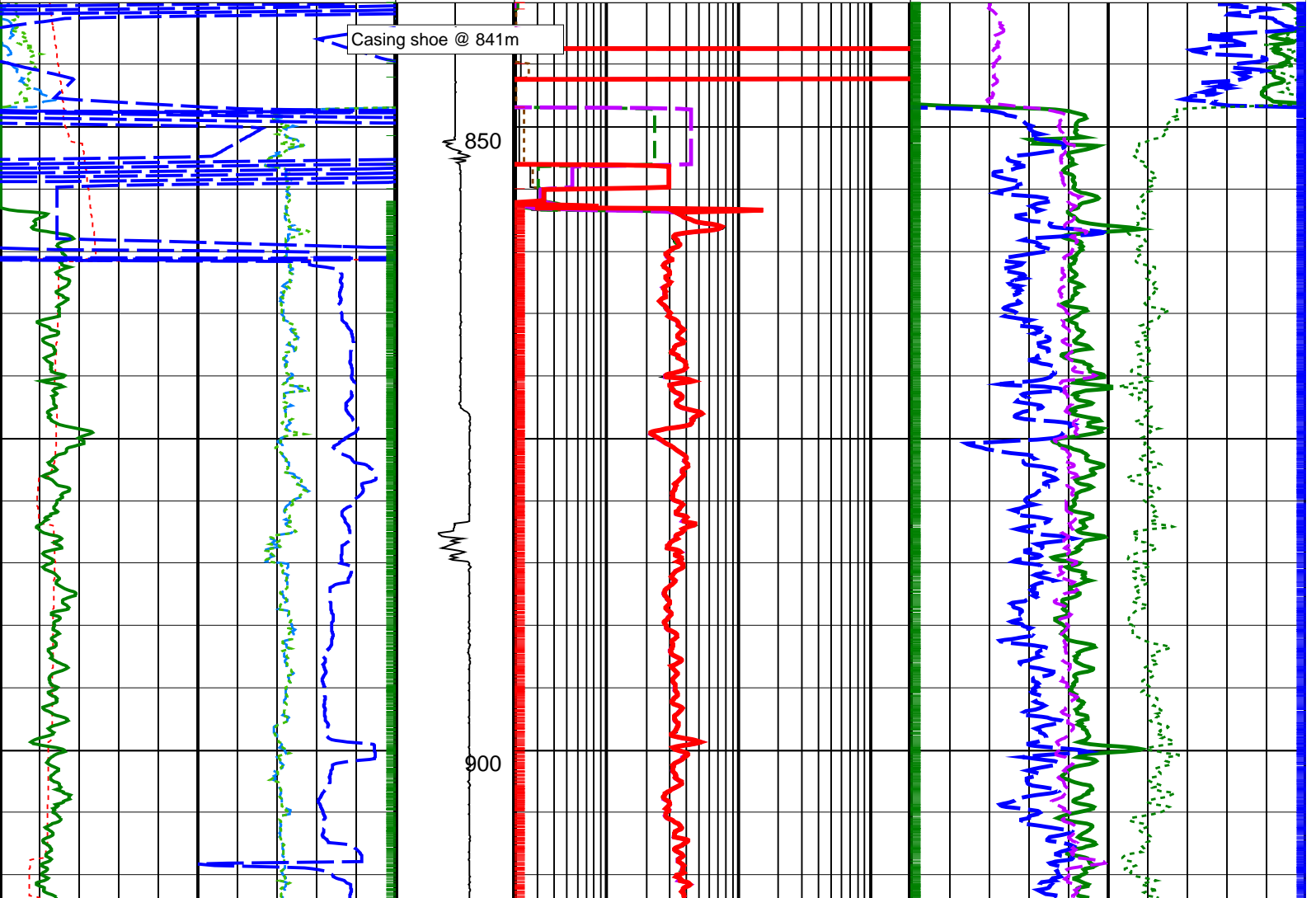
Density Samples †

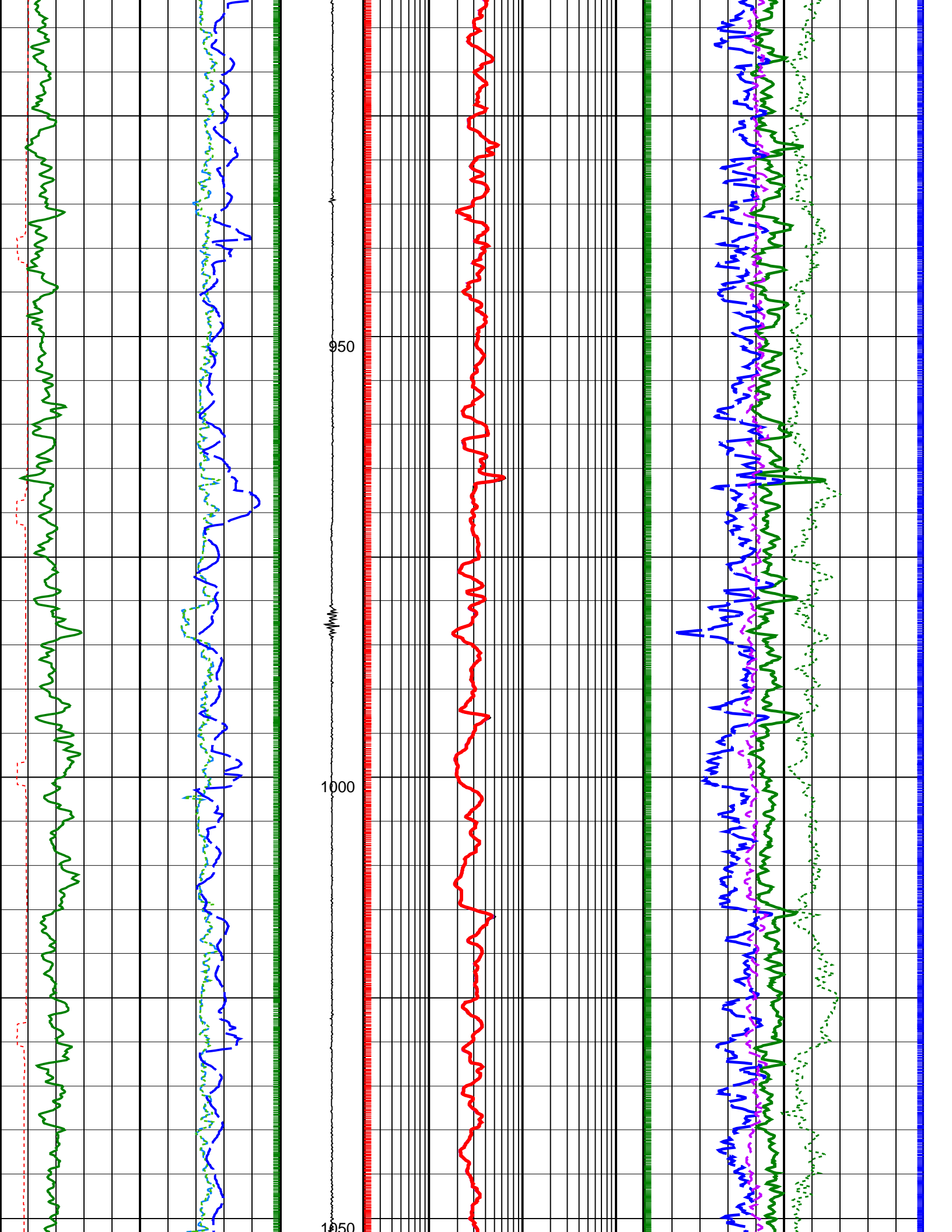
Neutron Samples †

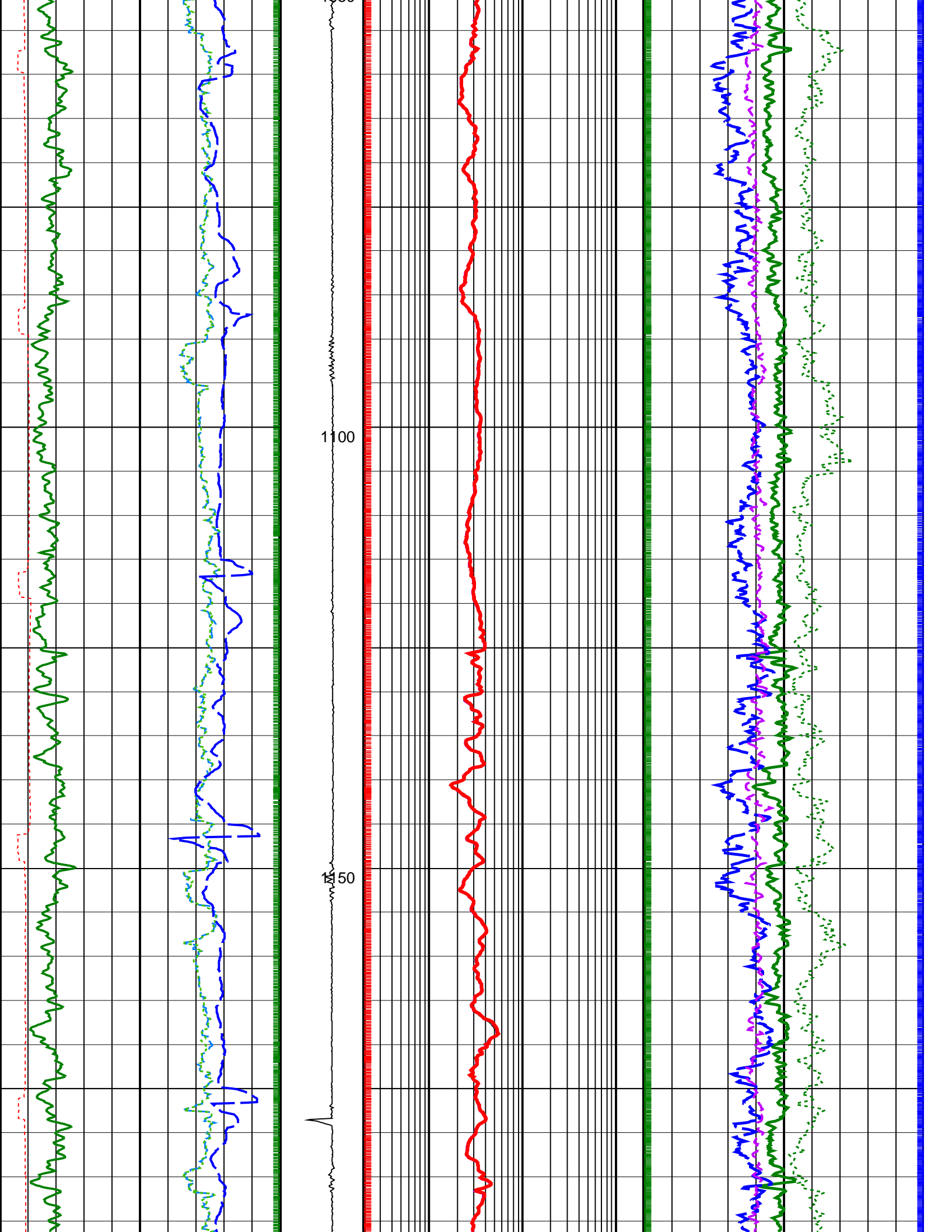
† ARC Gamma Ray Samples

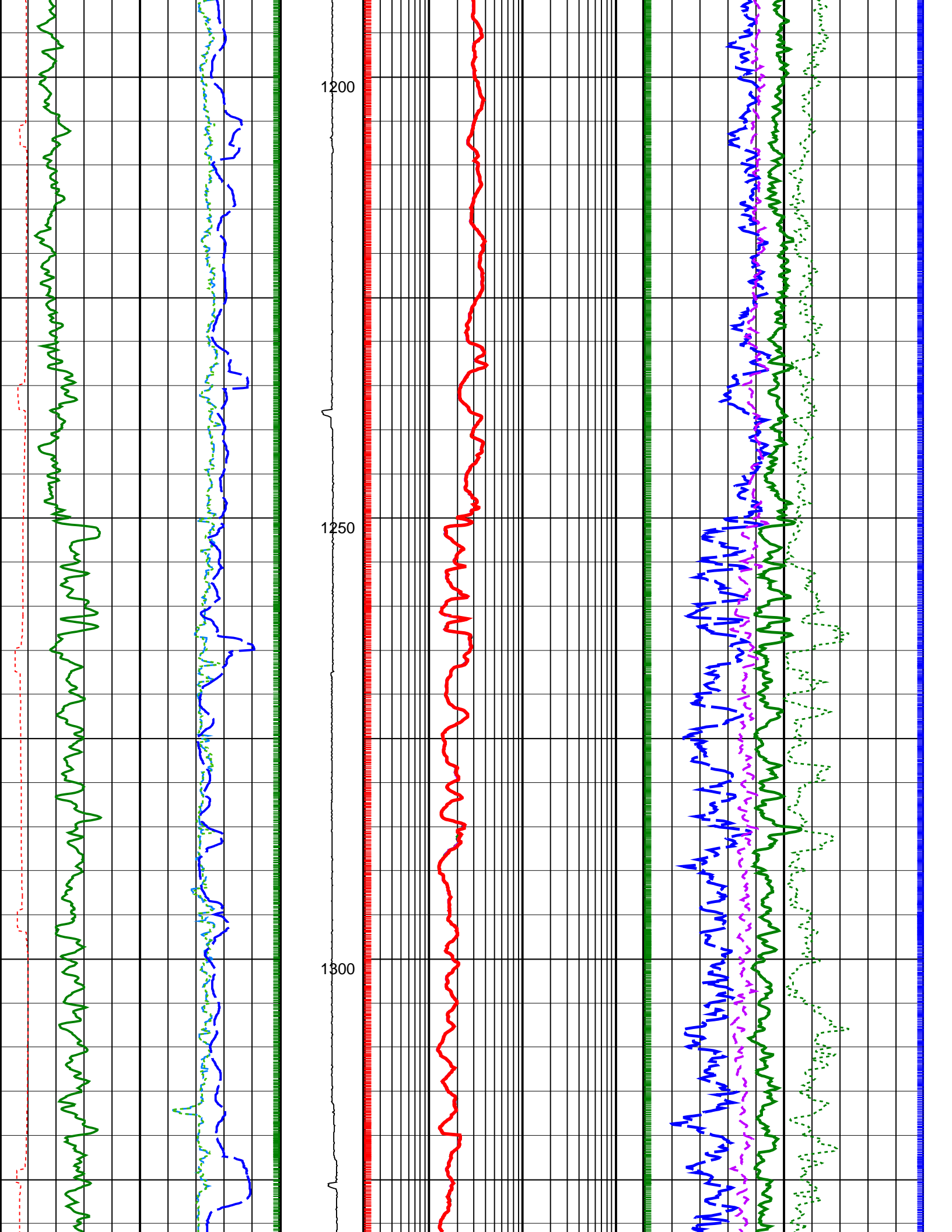
† ARC Resistivity Samples

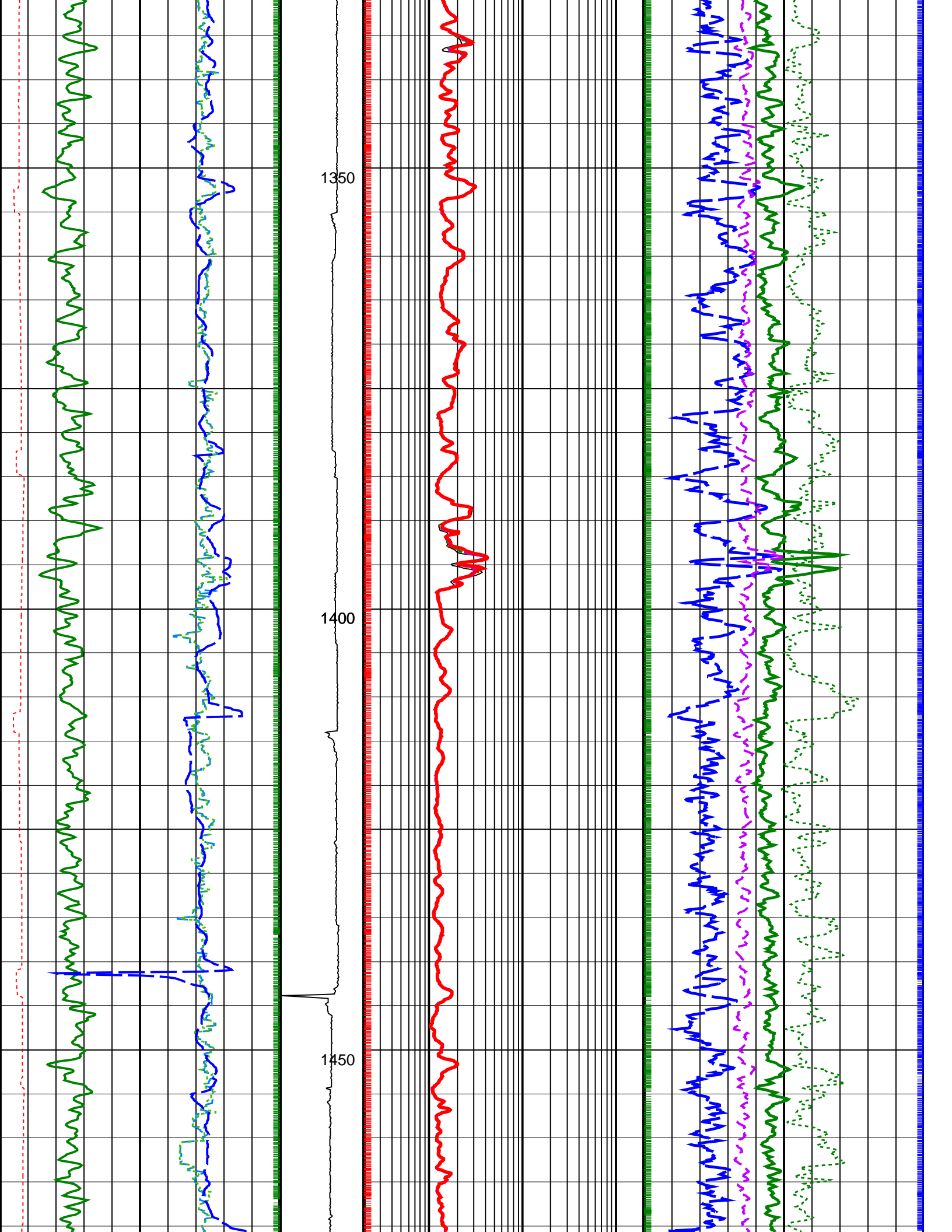
<p>Rate of Penetration, Averaged over Last 5ft (ROP5_RM) (M/HR)</p> <p style="text-align: center;">200 ————— 0</p>	<p>ARC Phase-Shift Resistivity 40-in. at 2 MHz (P40H) (OHMM)</p> <p style="text-align: center;">0.2 ————— 200</p>	<p>Gas Area From ADN/RHOB/DEPTH to ADN/TNPH/DEPTH</p>
<p>ARC Gamma Ray (GR_ARC) (GAPI)</p> <p style="text-align: center;">0 ————— 200</p>	<p>ARC Phase-Shift Resistivity 34-in. at 2 MHz (P34H) (OHMM)</p> <p style="text-align: center;">0.2 ————— 200</p>	<p>Bulk Density Correction (DRHO) (G/C3)</p> <p style="text-align: center;">-0.25 ————— 0.25</p>
<p>Vertical Hole Diameter (VERD) (IN)</p> <p style="text-align: center;">6 ————— 16</p>	<p>ARC Phase-Shift Resistivity 28-in. at 2 MHz (P28H) (OHMM)</p> <p style="text-align: center;">0.2 ————— 200</p>	<p>Photoelectric Factor (PEF) (----)</p> <p style="text-align: center;">0 ————— 10</p>
<p>Horizontal Hole Diameter (HORD) (IN)</p> <p style="text-align: center;">6 ————— 16</p>	<p>ARC Phase-Shift Resistivity 22-in. at 2 MHz (P22H) (OHMM)</p> <p style="text-align: center;">0.2 ————— 200</p>	<p>Thermal Neutron Porosity (TNPH) (PU)</p> <p style="text-align: center;">45 ————— -15</p>
<p>Density Time After Bit (TAB_DEN) (HR)</p> <p style="text-align: center;">0 ————— 10</p>	<p>ADN Rotational Speed (RPM_ADN) (RPM)</p> <p style="text-align: center;">0 — 250</p>	<p>ARC Phase-Shift Resistivity 16-in. at 2 MHz (P16H) (OHMM)</p> <p style="text-align: center;">0.2 ————— 200</p>
		<p>Bulk Density (RHOB) (G/C3)</p> <p style="text-align: center;">1.95 ————— 2.95</p>

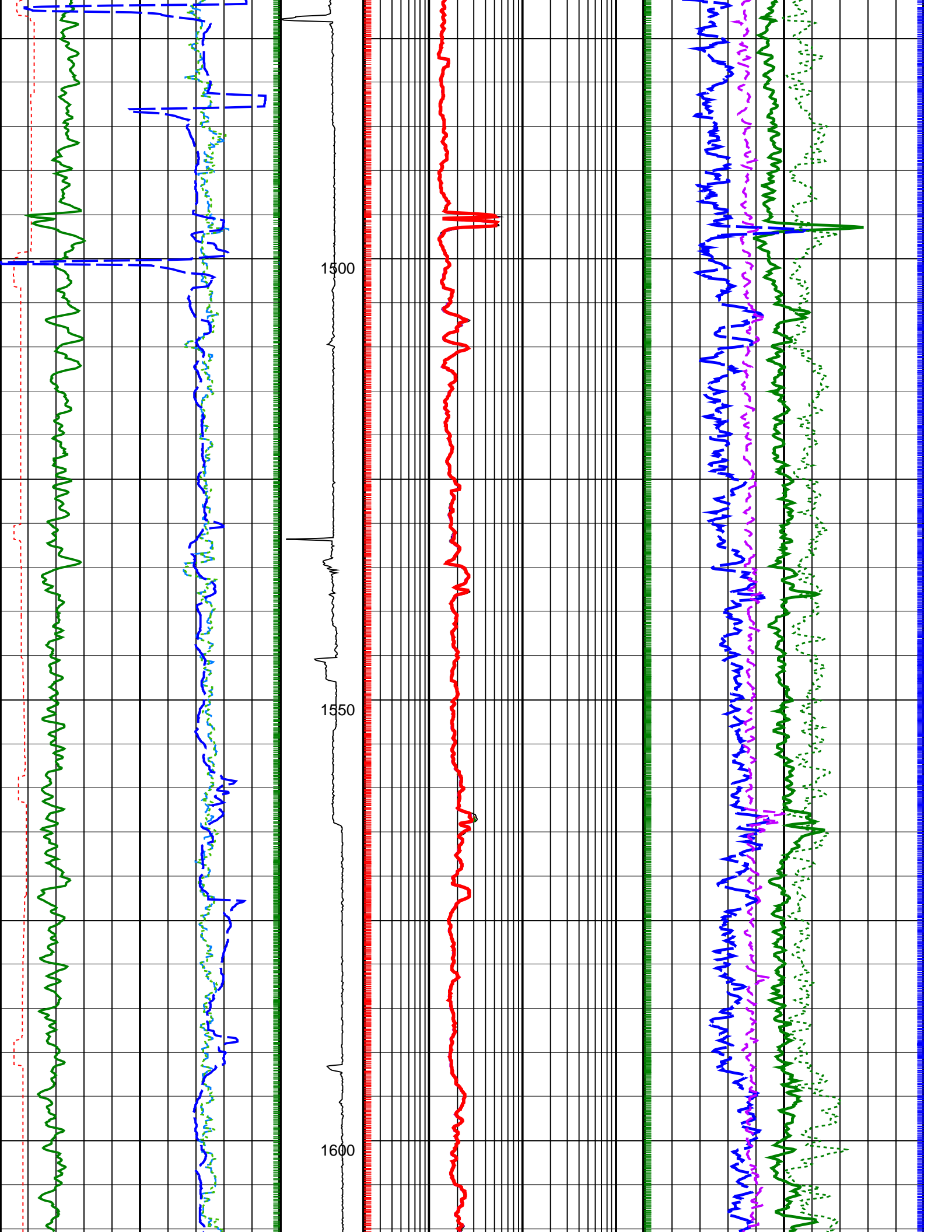


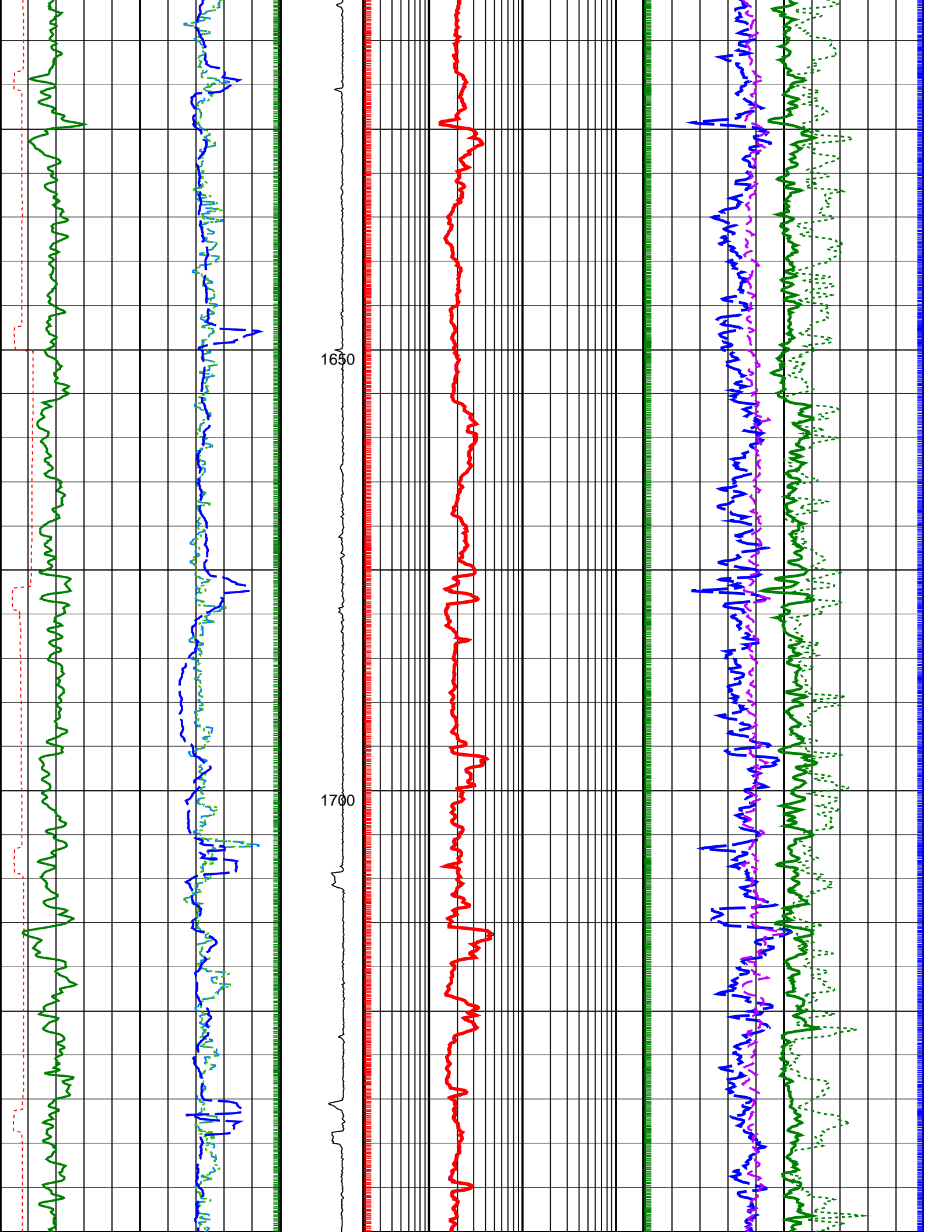


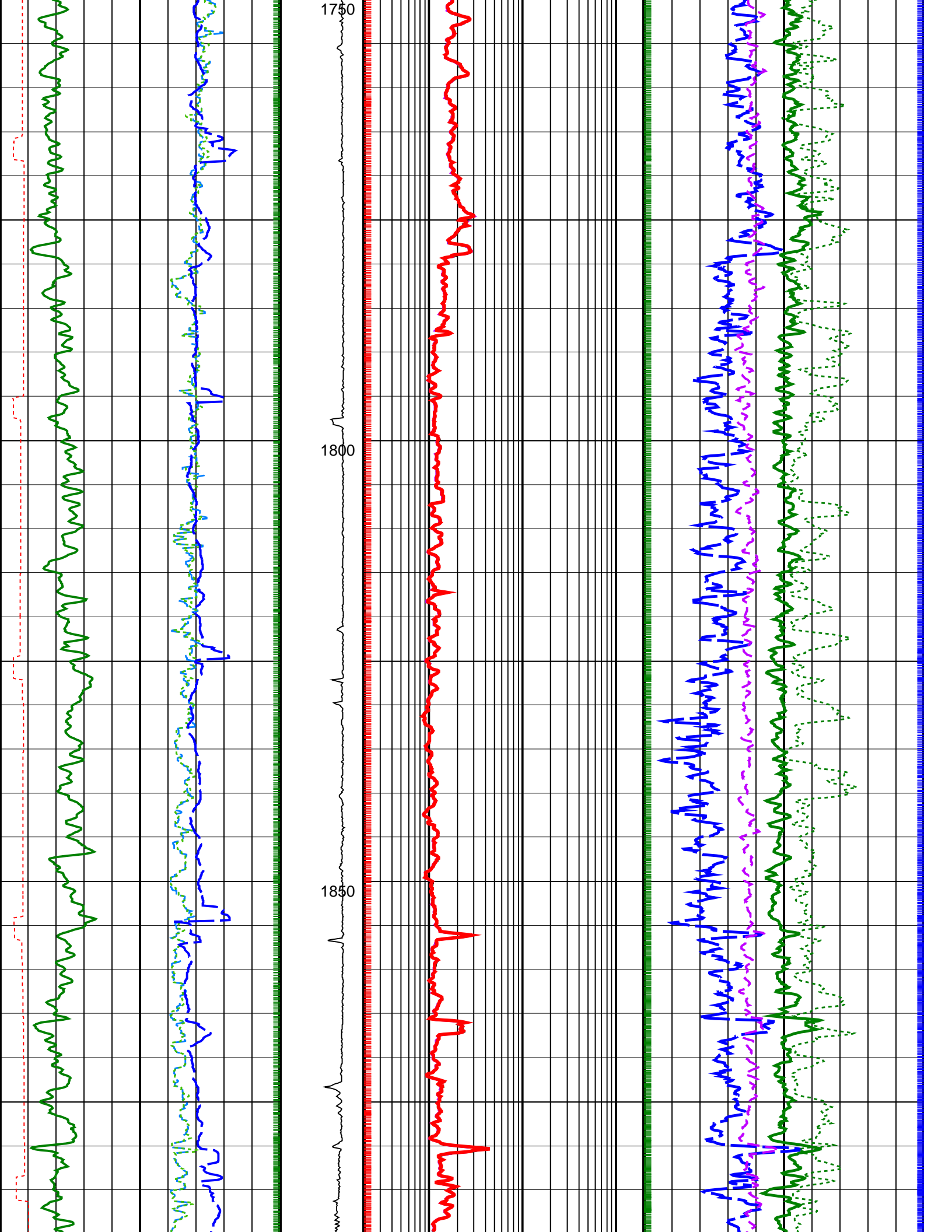


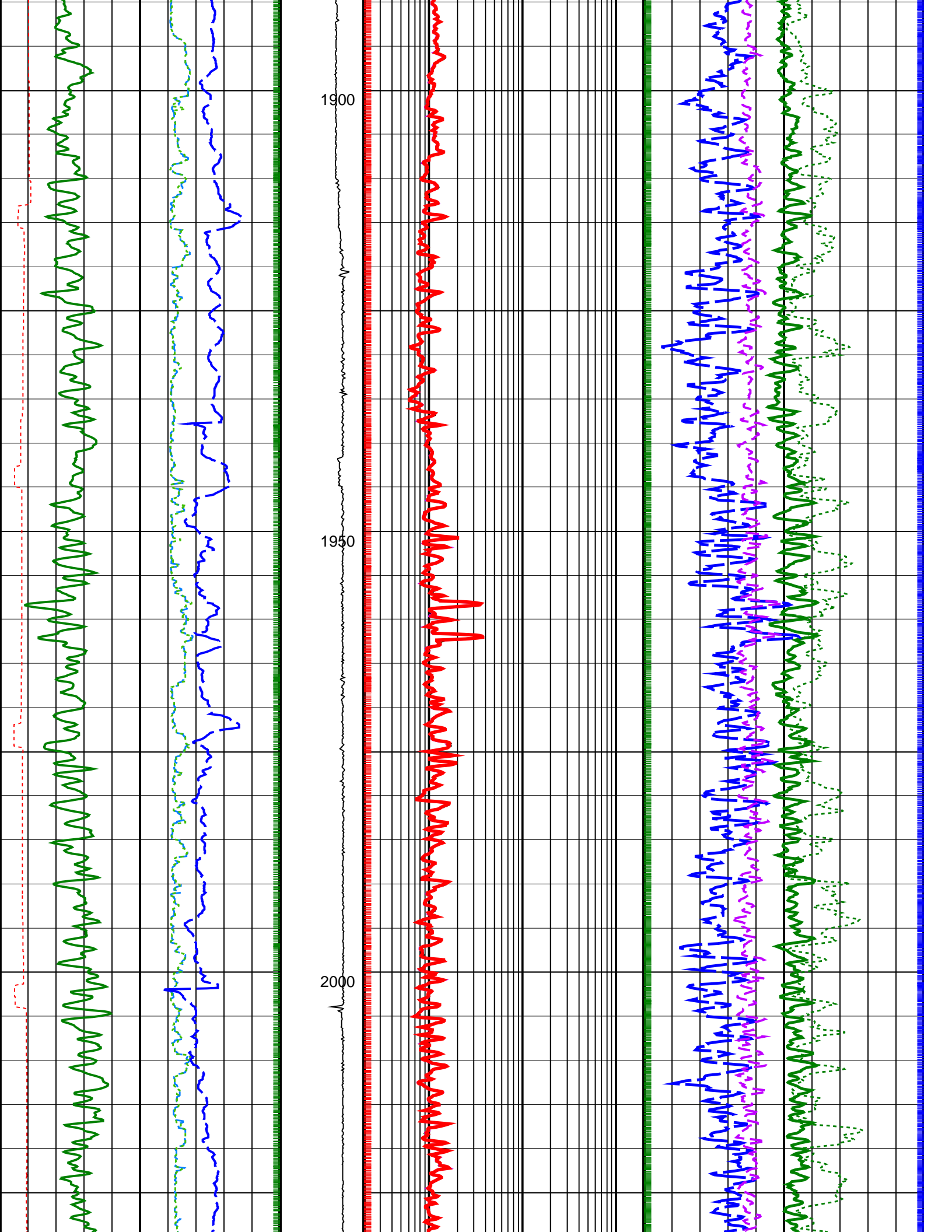


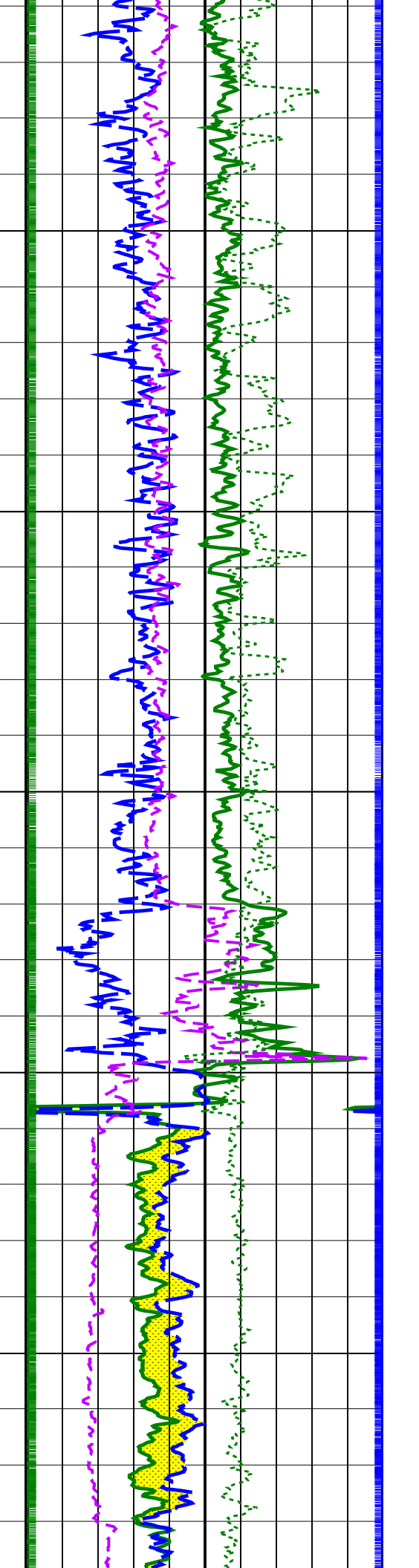
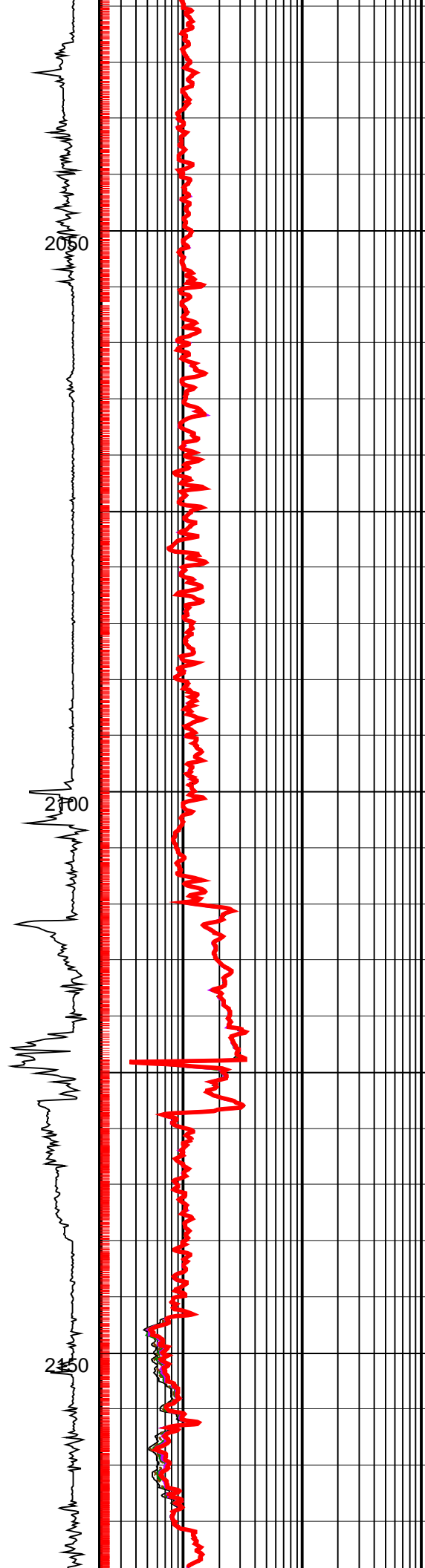
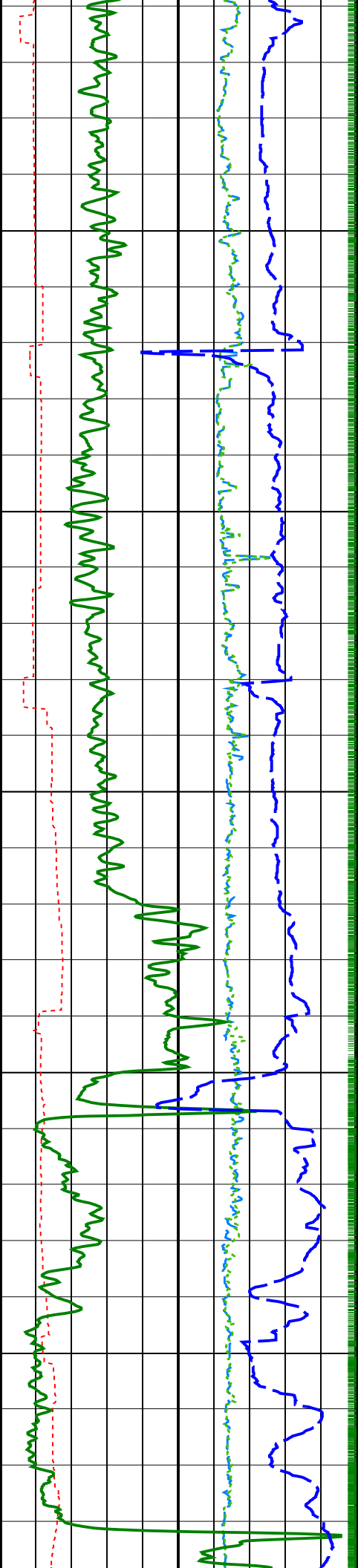


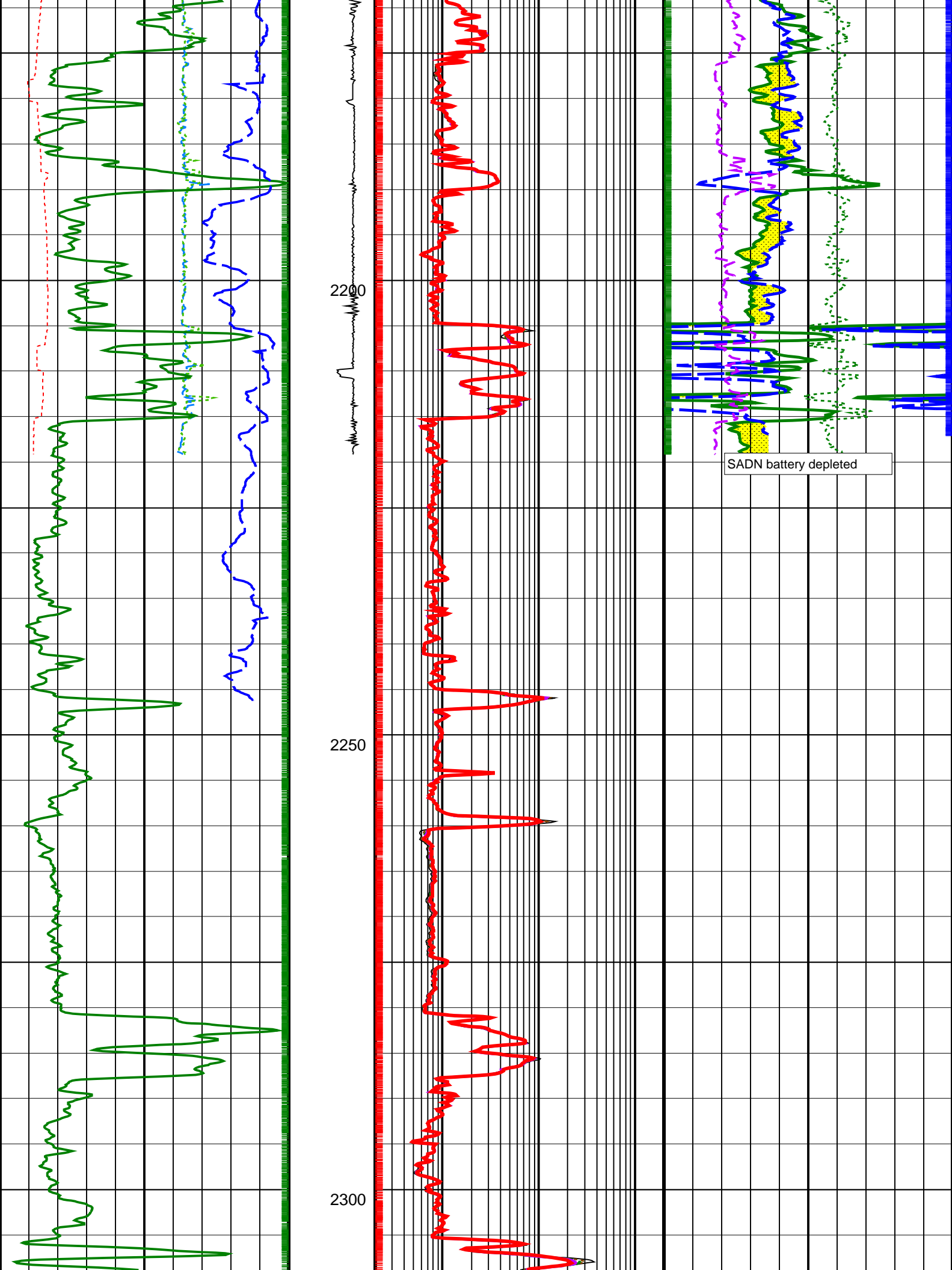


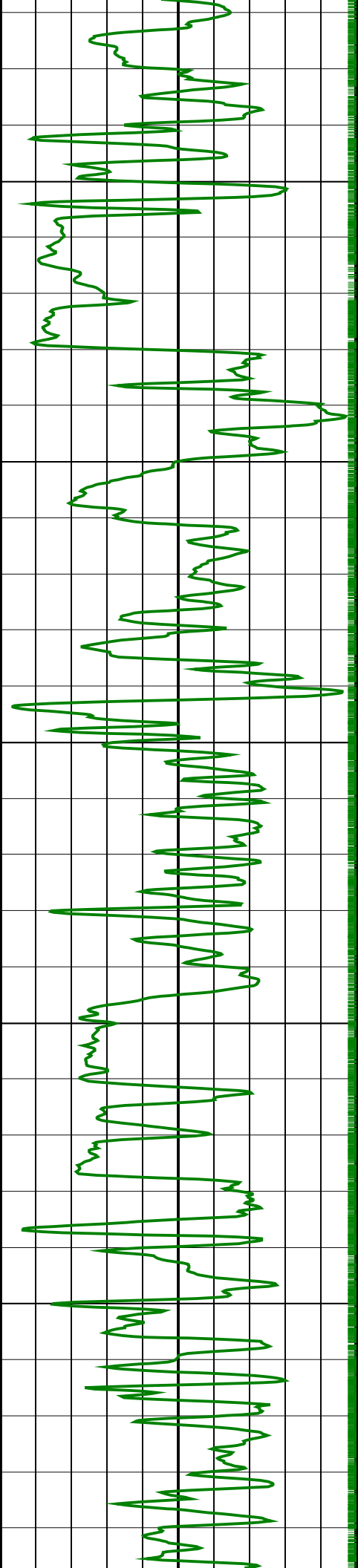






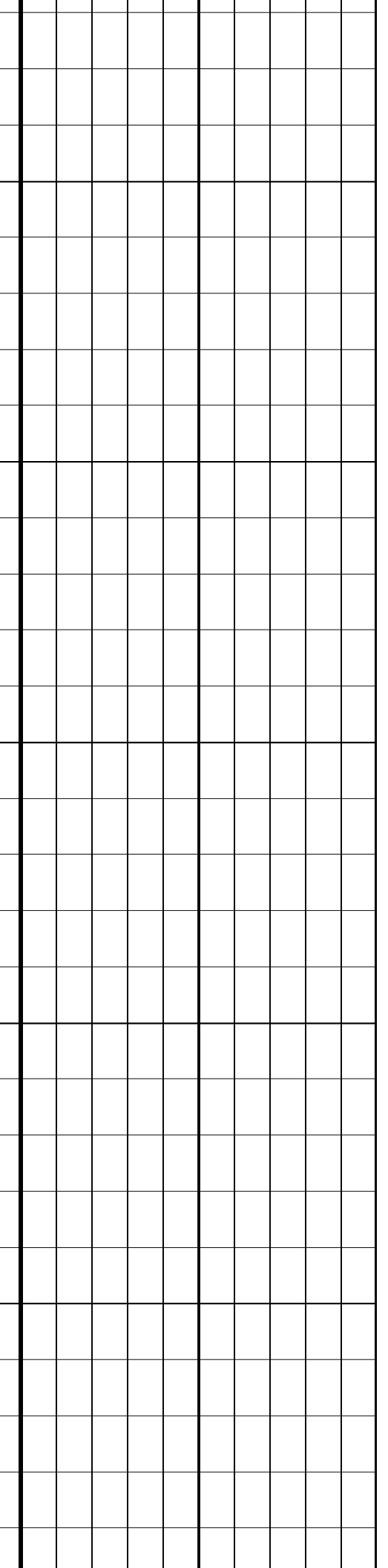
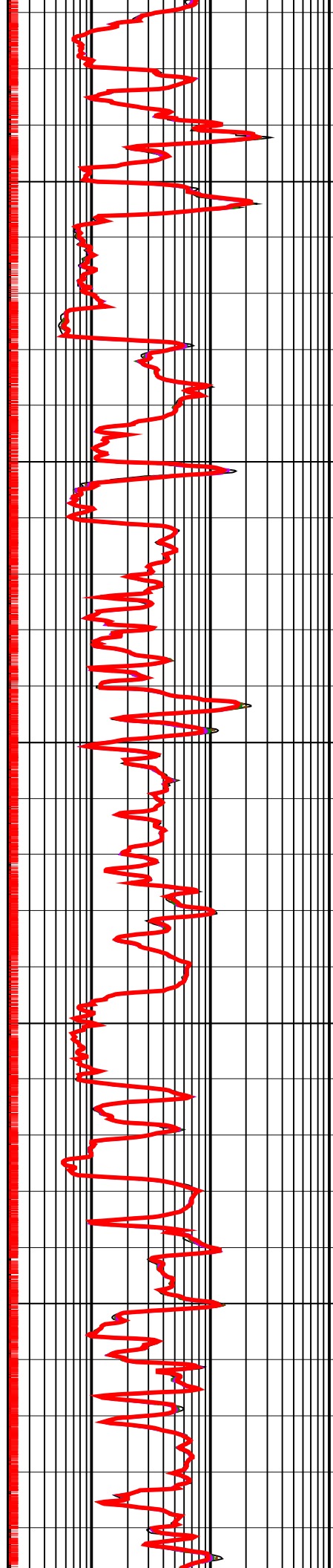


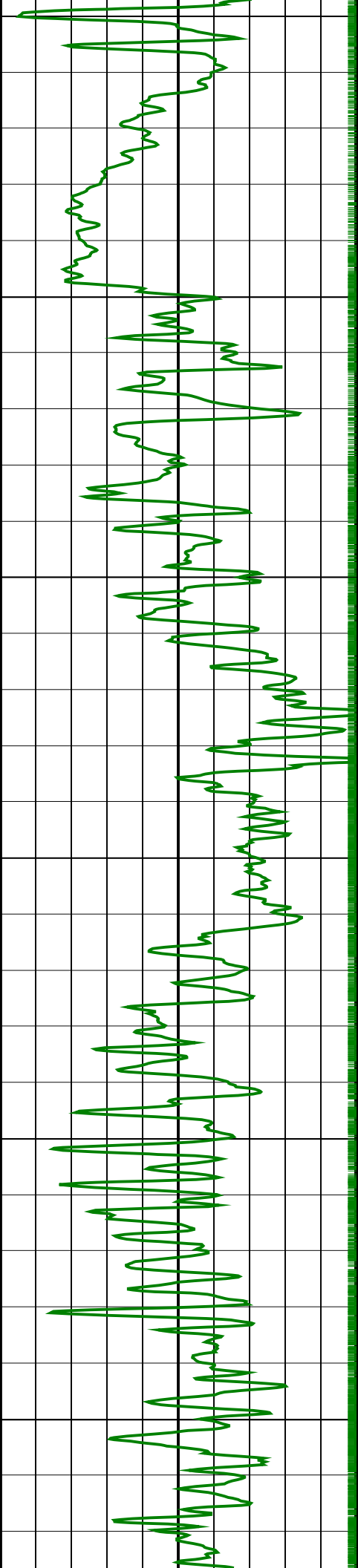




2350

2400

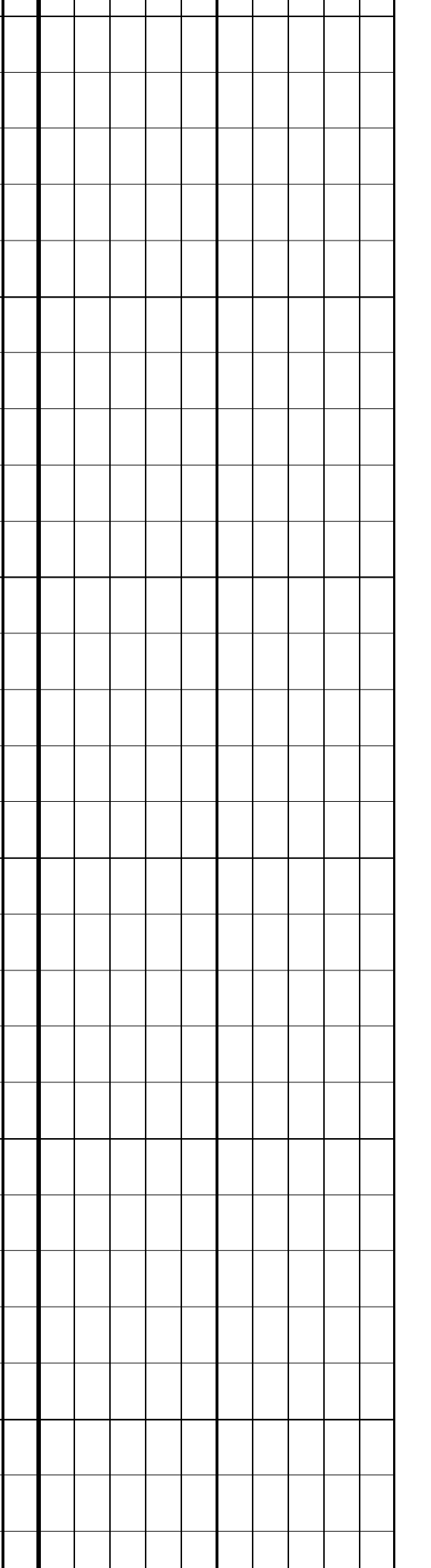
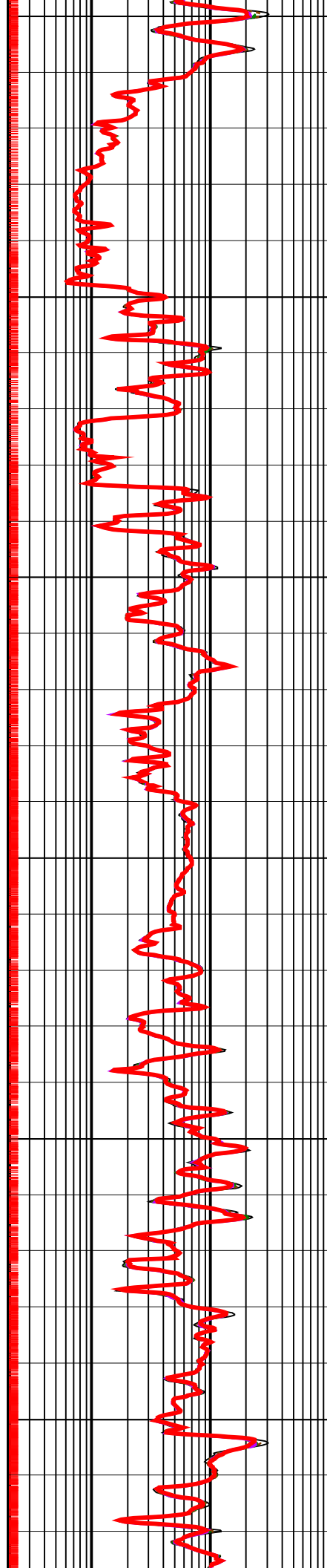


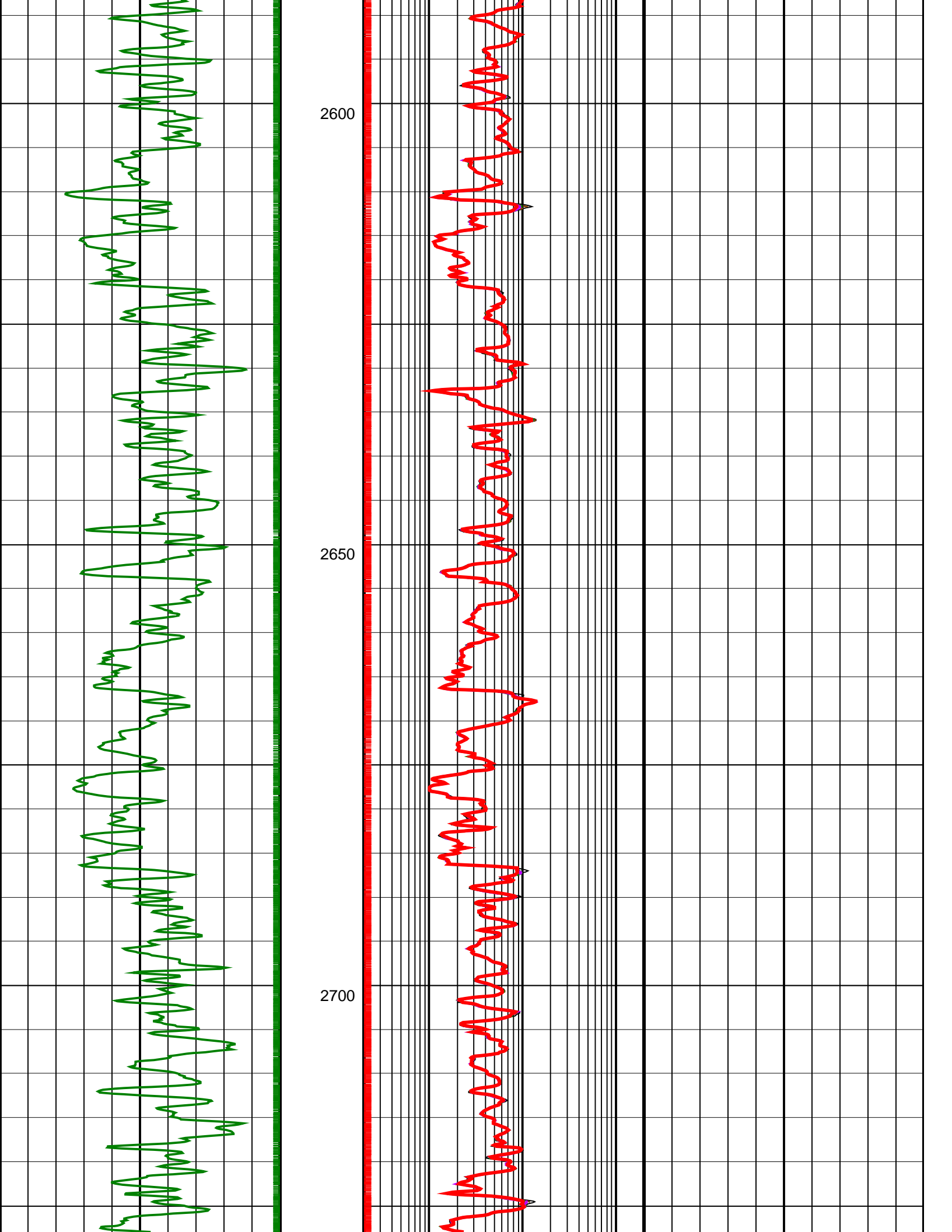


2450

2500

2550

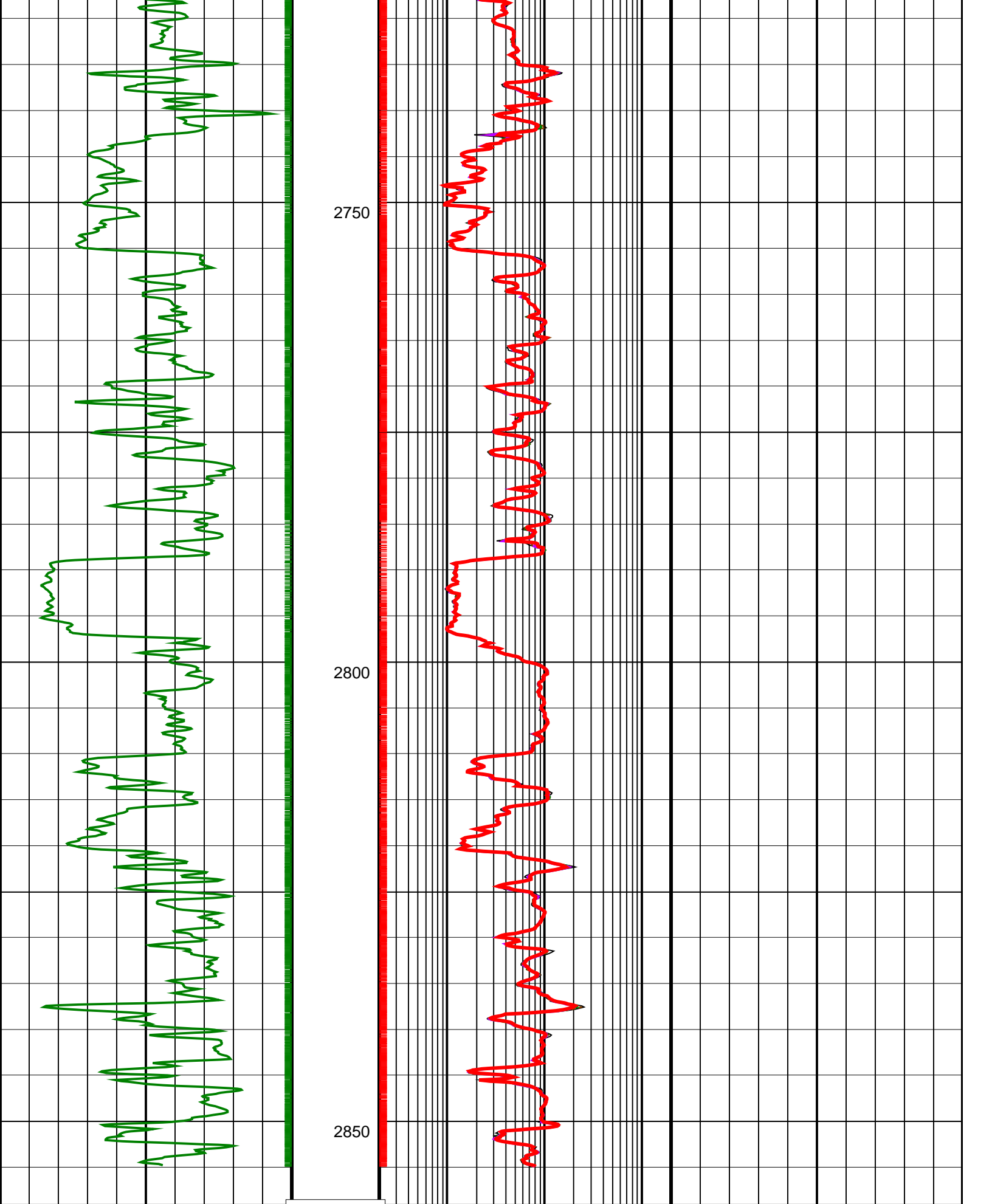




2600

2650

2700



TD @ 2859m

Density Time After Bit (TAB_DEN)
(HR)

Rotational Speed
(RPM_ADN)
(RPM)

ARC Phase-Shift Resistivity 16-in. at 2
MHz (P16H)
(OHMM)

Bulk Density (RHOB)
(G/C3)

0

10

0.2

200

1.95

2.95

		(RPM)			
		0	250		
Horizontal Hole Diameter (HORD) (IN)		ARC Phase-Shift Resistivity 22-in. at 2 MHz (P22H) (OHMM)		Thermal Neutron Porosity (TNPH) (PU)	
6	16	0.2	200	45	-15
Vertical Hole Diameter (VERD) (IN)		ARC Phase-Shift Resistivity 28-in. at 2 MHz (P28H) (OHMM)		Photoelectric Factor (PEF) (----	
6	16	0.2	200	0	10
ARC Gamma Ray (GR_ARC) (GAPI)		ARC Phase-Shift Resistivity 34-in. at 2 MHz (P34H) (OHMM)		Bulk Density Correction (DRHO) (G/C3)	
0	200	0.2	200	-0.25	0.25
Rate of Penetration, Averaged over Last 5ft (ROP5_RM) (M/HR)		ARC Phase-Shift Resistivity 40-in. at 2 MHz (P40H) (OHMM)		Gas Area From ADN/RHOB/DEPTH to ADN/TNPH/DEPTH	
200	0	0.2	200		

PIP SUMMARY

Density Samples †

Neutron Samples †

‡ ARC Gamma Ray Samples

† ARC Resistivity Samples

IDEAL Version: ID13_0C_11
IDF