

Bazzard-1 500MD RT Log

IDF

Format: Bazzard_1 ARCSonic RT Log Vertical Scale: 1:500 Graphics File Created: 01-Oct-2008 05:21

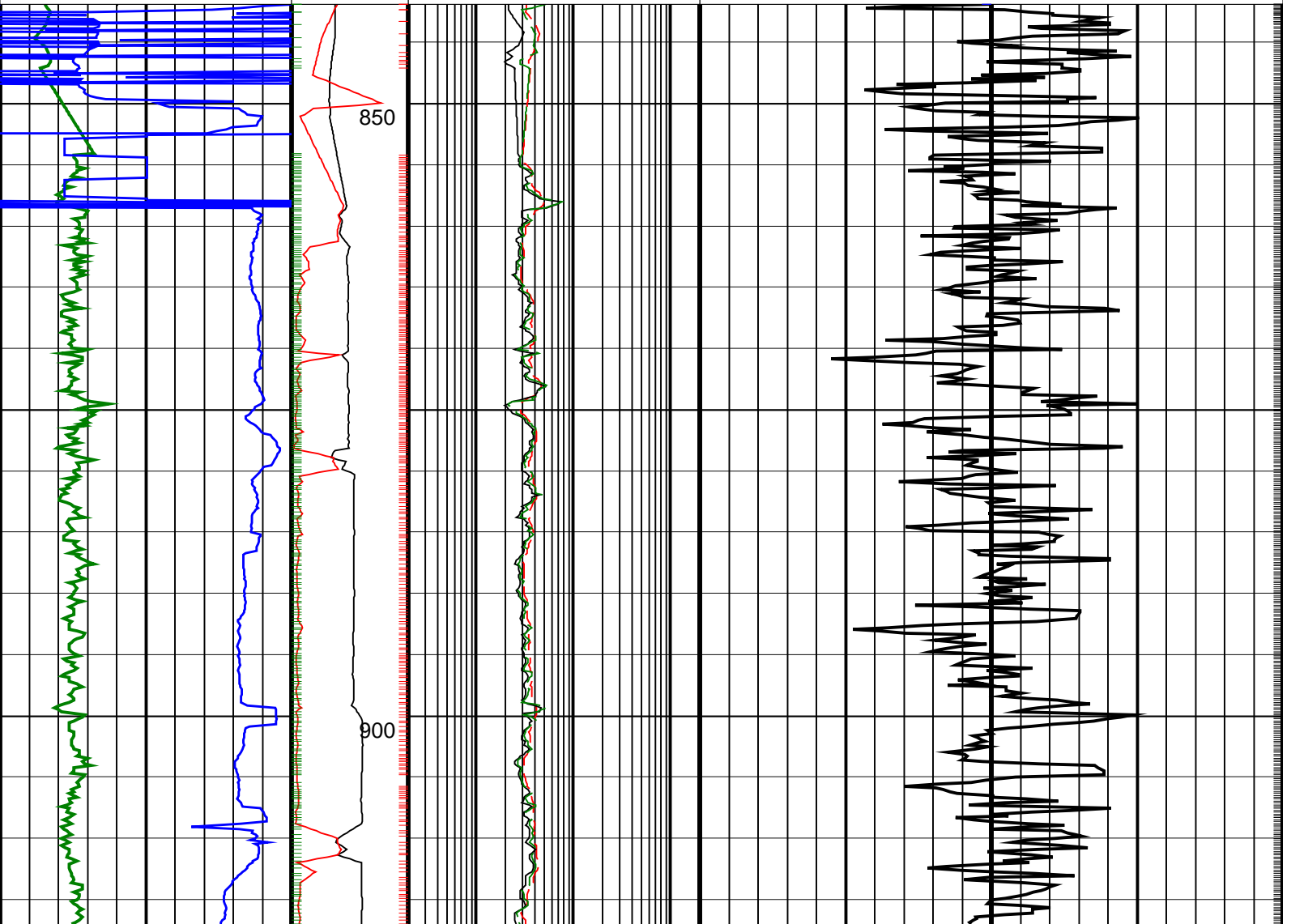
Parameters

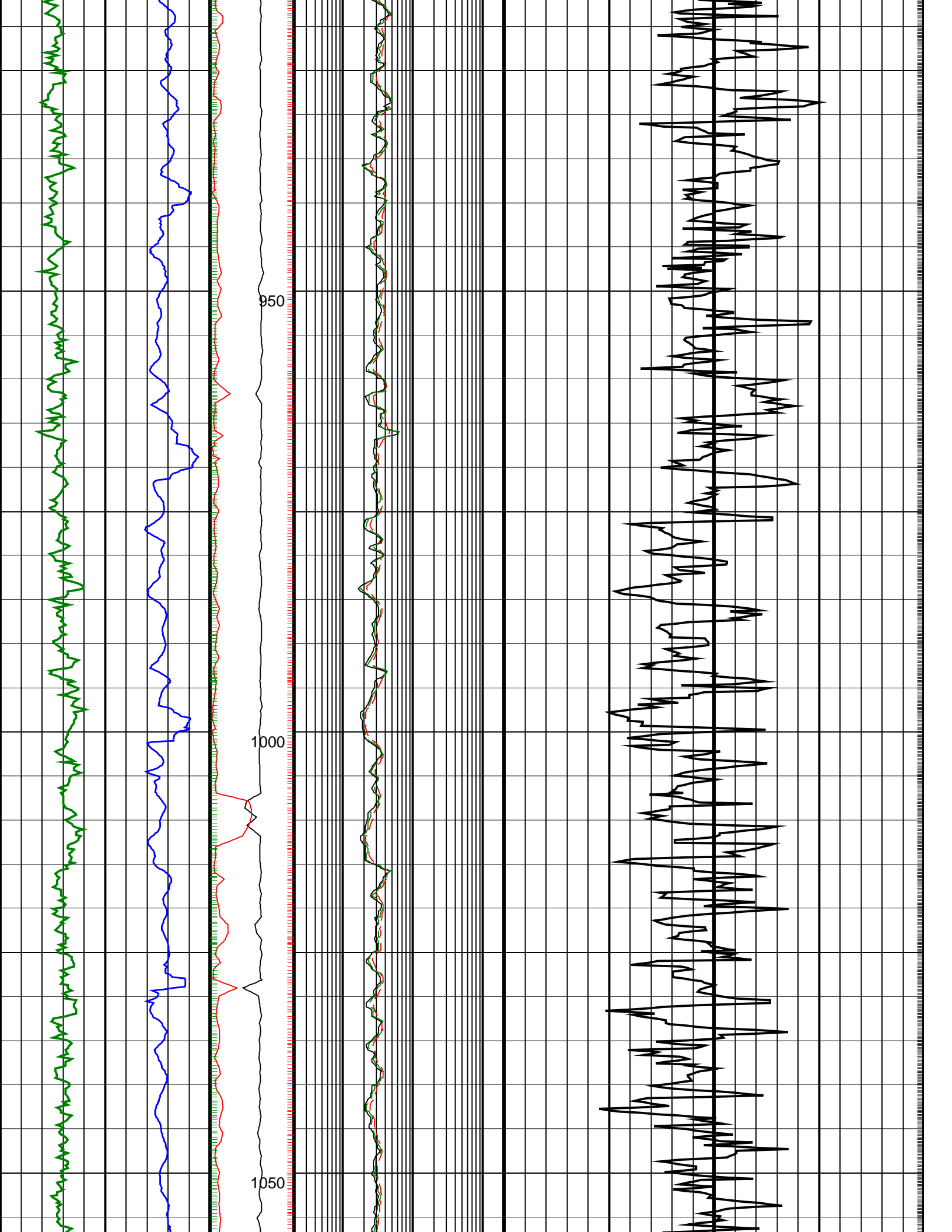
DLIS Name	Description	Value
DO	Depth Offset	0.0 m

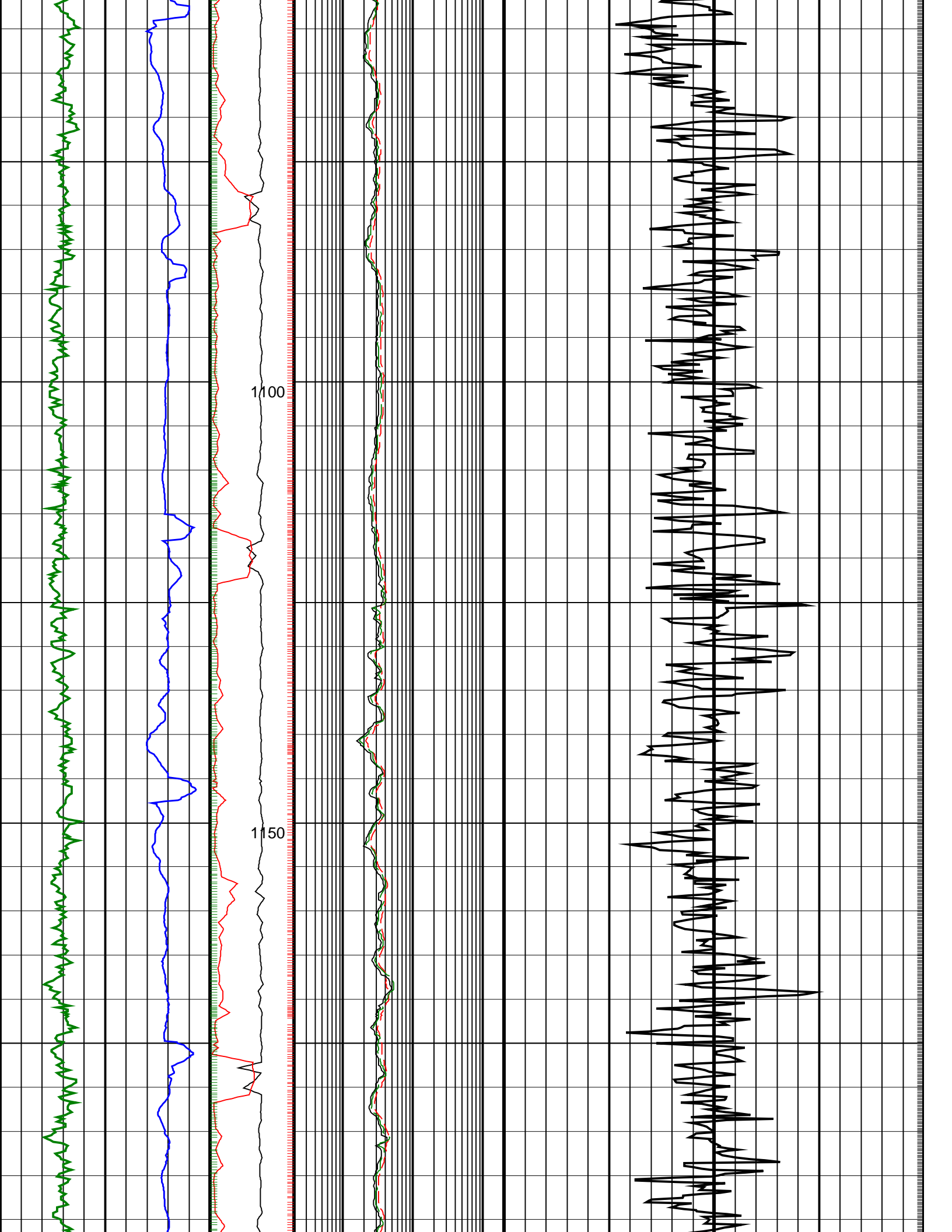
PIP SUMMARY

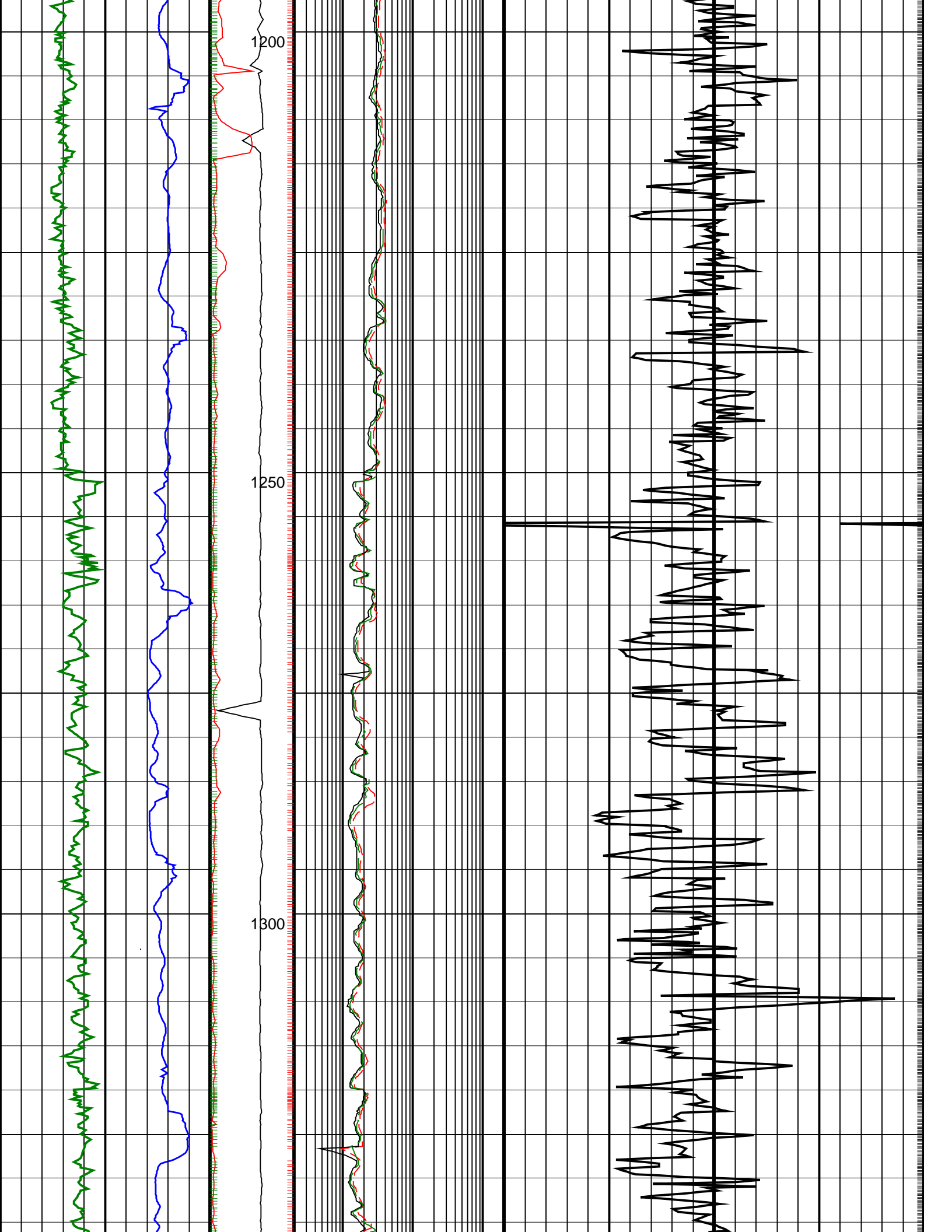
+ Gamma Ray Samples + Resistivity Samples Neutron Samples + Delta-T Samples -

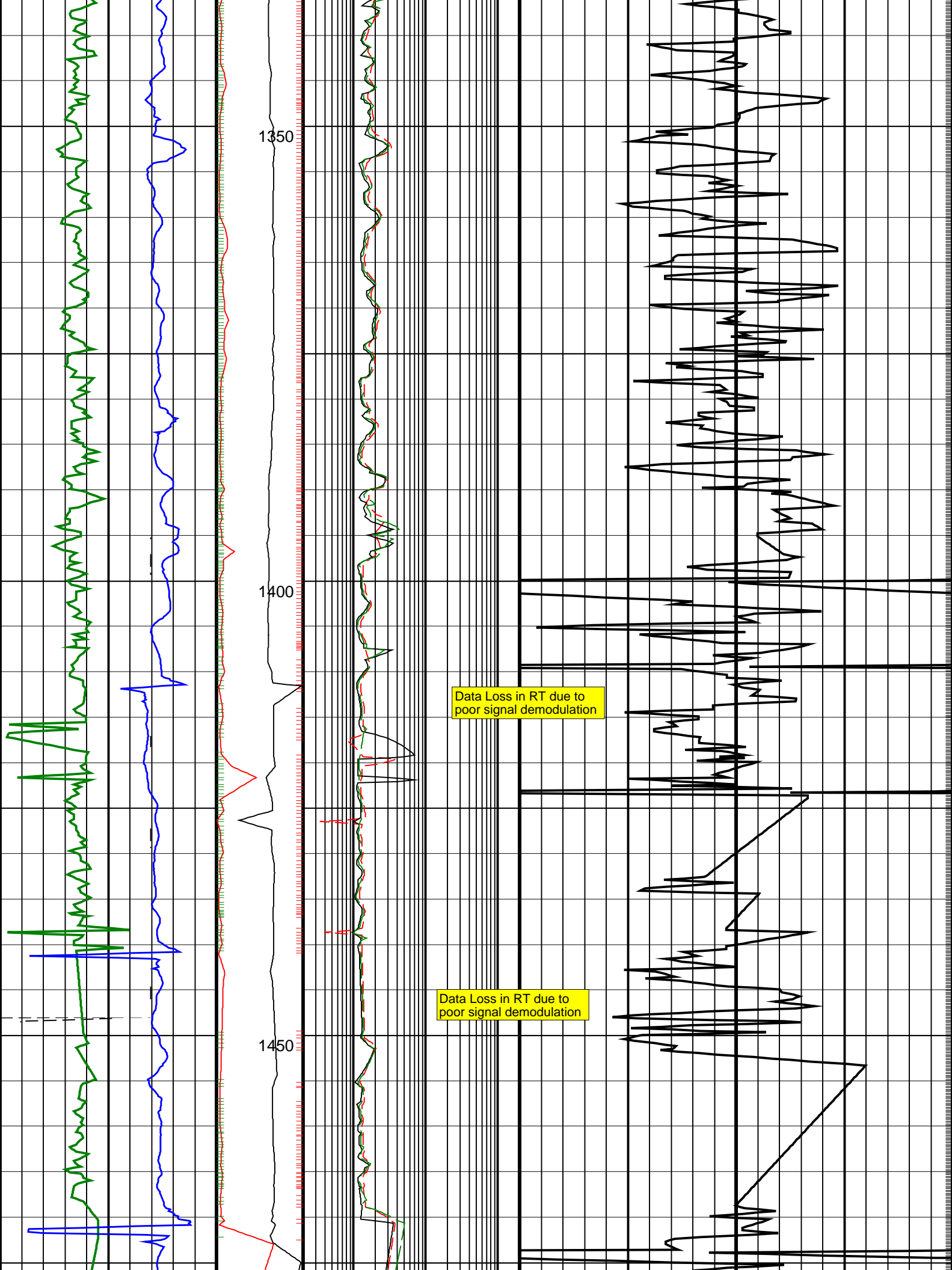
ARC Gamma Ray, Real-Time (ARC_GR_RT) 0 (GAPI) 200			ARC BHCorr Phase-Shift Resistivity 40-in. at 2 MHz, Real-Time (P40H_RT) 0.2 (OHMM) 200	
Average Borehole Diameter, Real-Time (ADIA_ADN_RT) 6 (IN) 16	MWD Collar RPM (CRPM_RT) 0 250		ARC BHCorr Phase-Shift Resistivity 16-in. at 2 MHz, Real-Time (P16H_RT) 0.2 (OHMM) 200	
ROP*5 (ROP5) 200 (M/HR) 0	PKPK_RPM (Stick_RT) 0 500	ARC BHCorr Attenuation Resistivity 40-in. at 2 MHz, Real-Time (A40H_RT) 0.2 (OHMM) 200	Delta-T Compressional, Real-Time (DTCO_RT) 140 (US/F) 40	











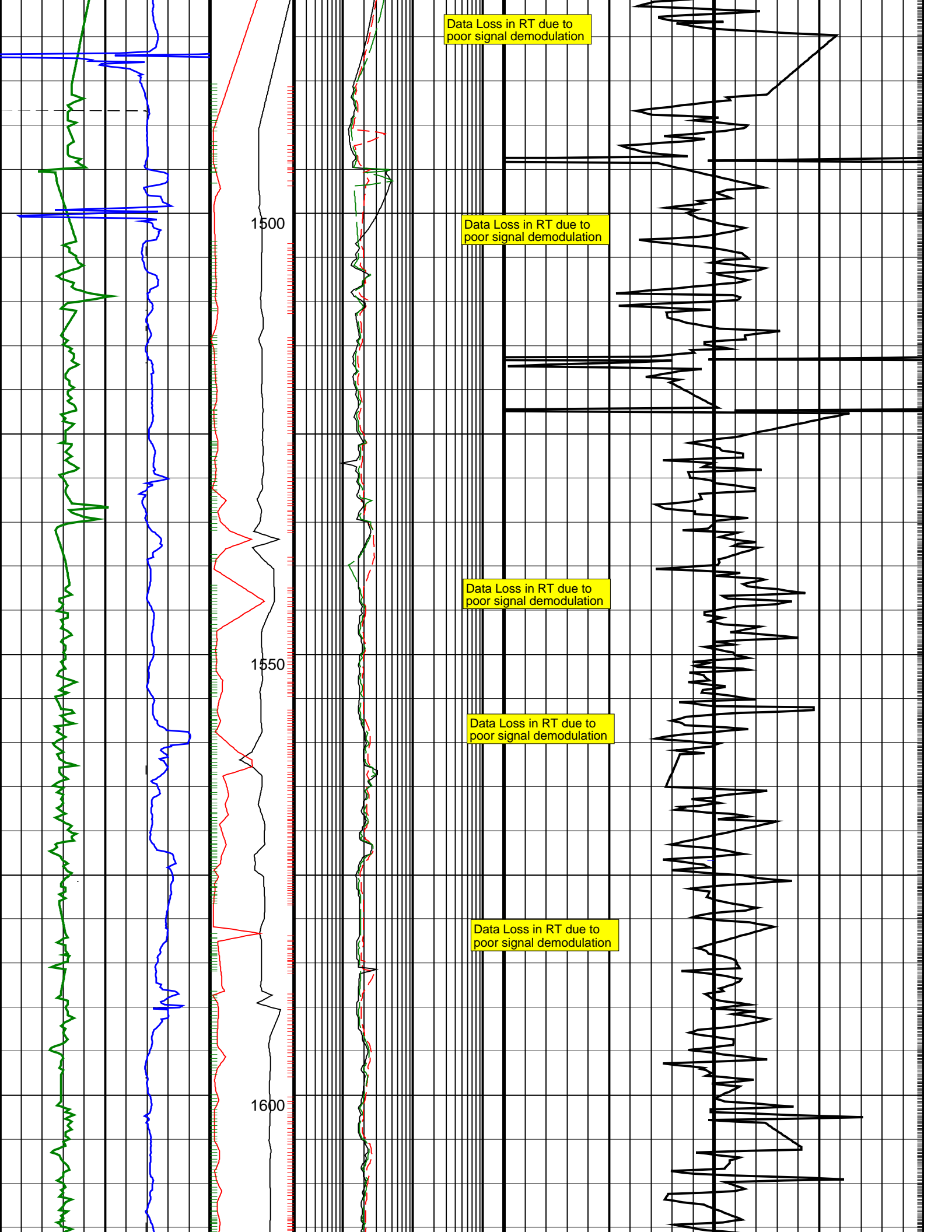
1350

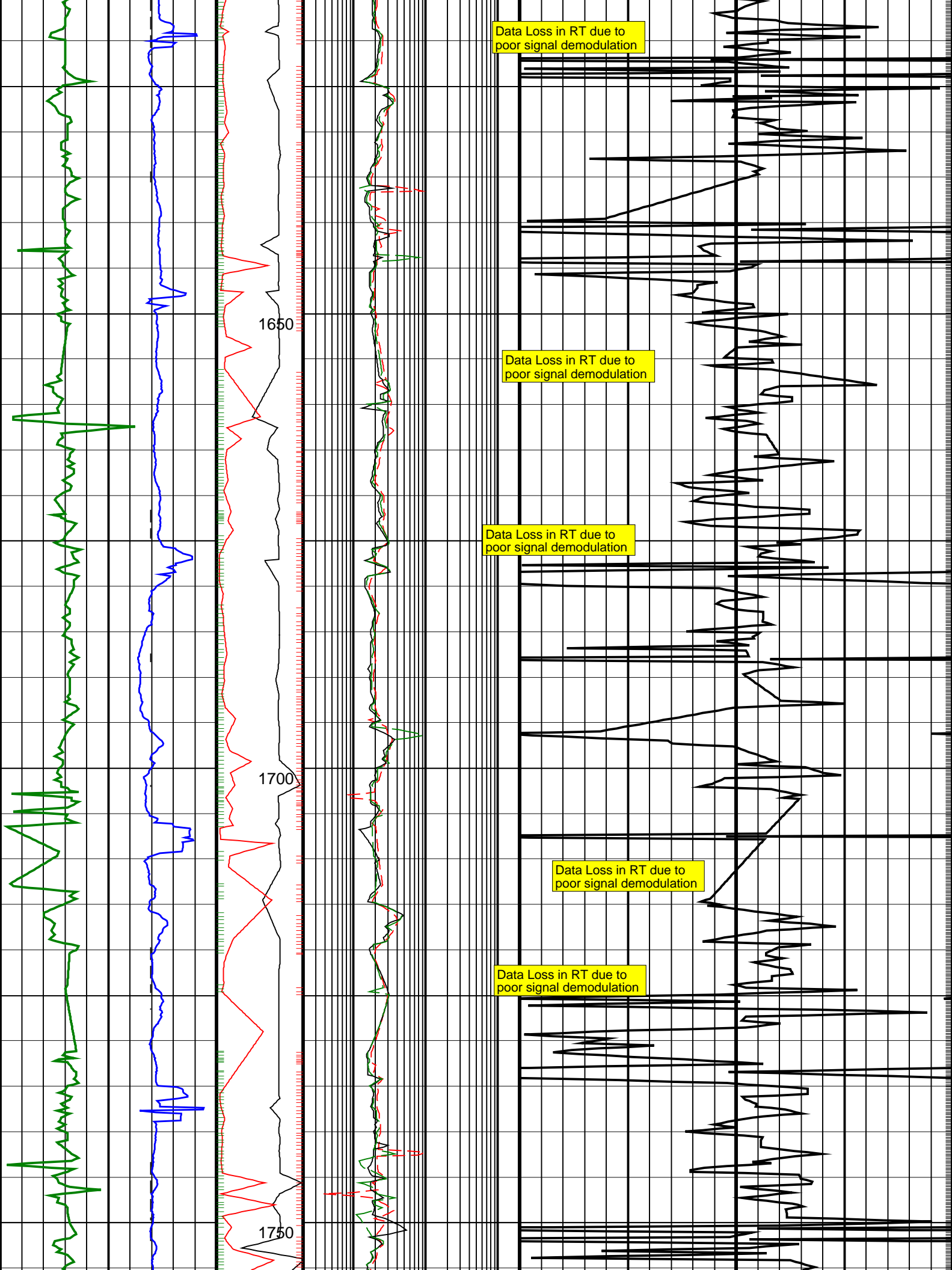
1400

1450

Data Loss in RT due to poor signal demodulation

Data Loss in RT due to poor signal demodulation





Data Loss in RT due to poor signal demodulation

Data Loss in RT due to poor signal demodulation

Data Loss in RT due to poor signal demodulation

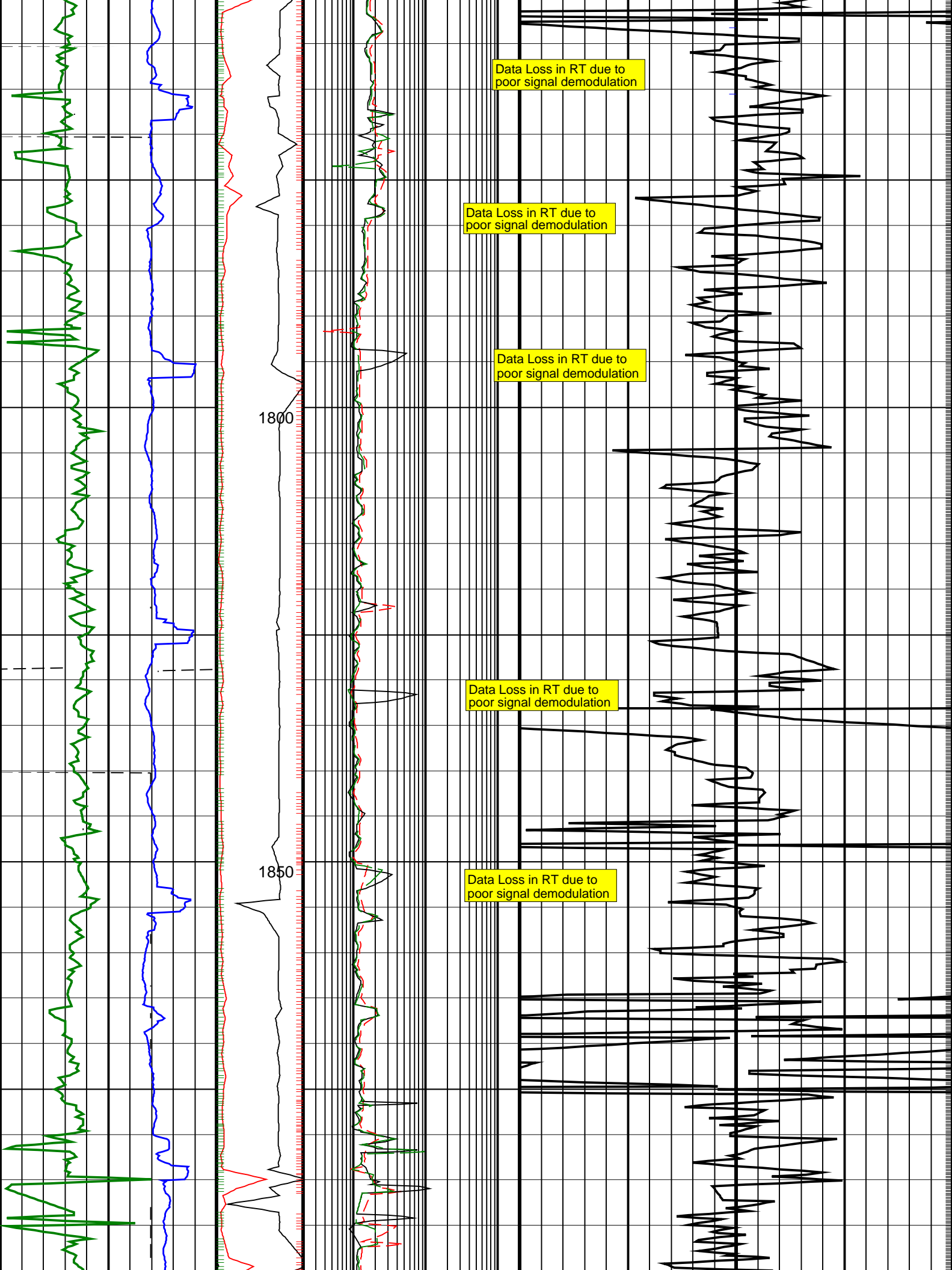
Data Loss in RT due to poor signal demodulation

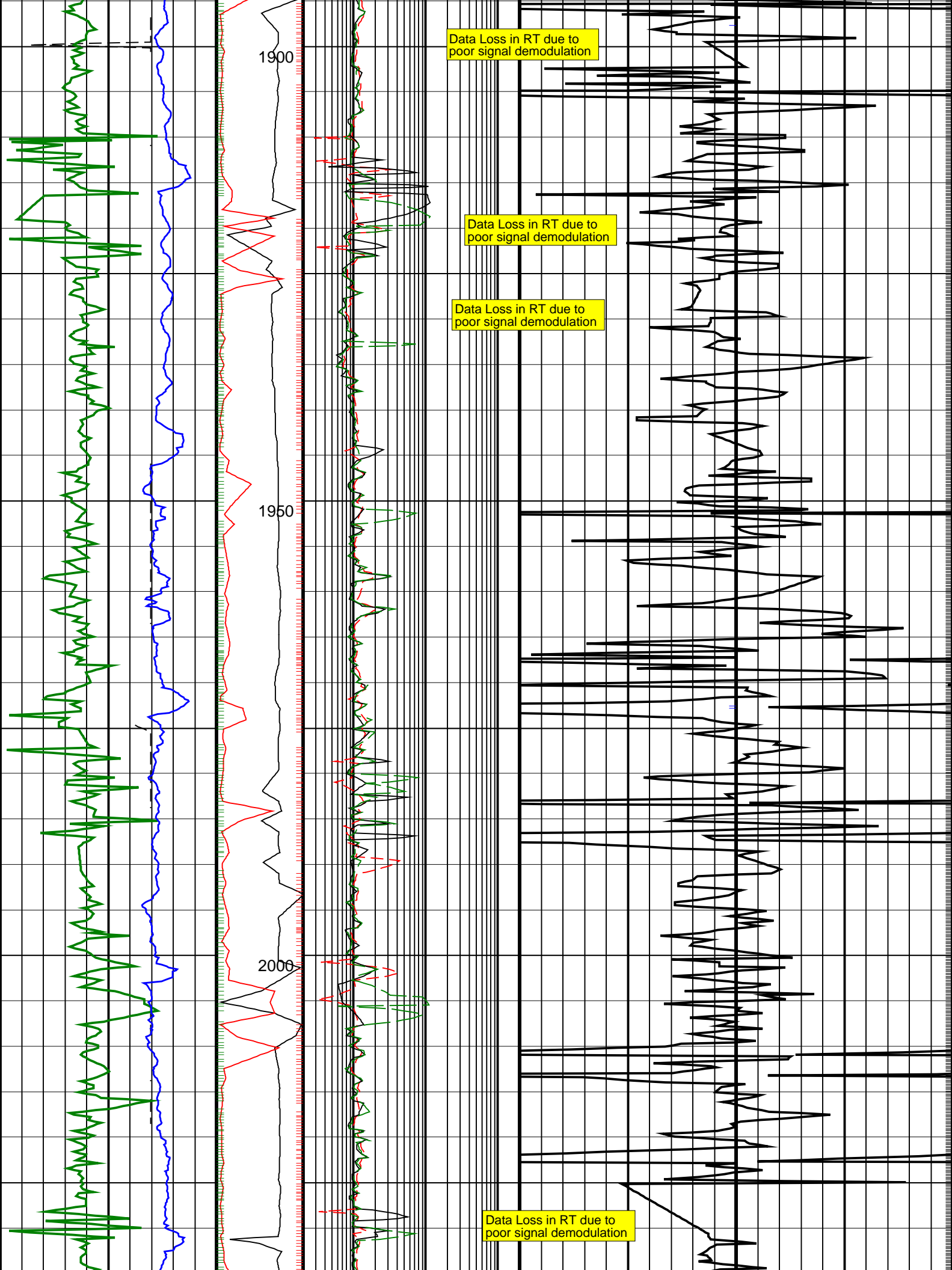
Data Loss in RT due to poor signal demodulation

1650

1700

1750



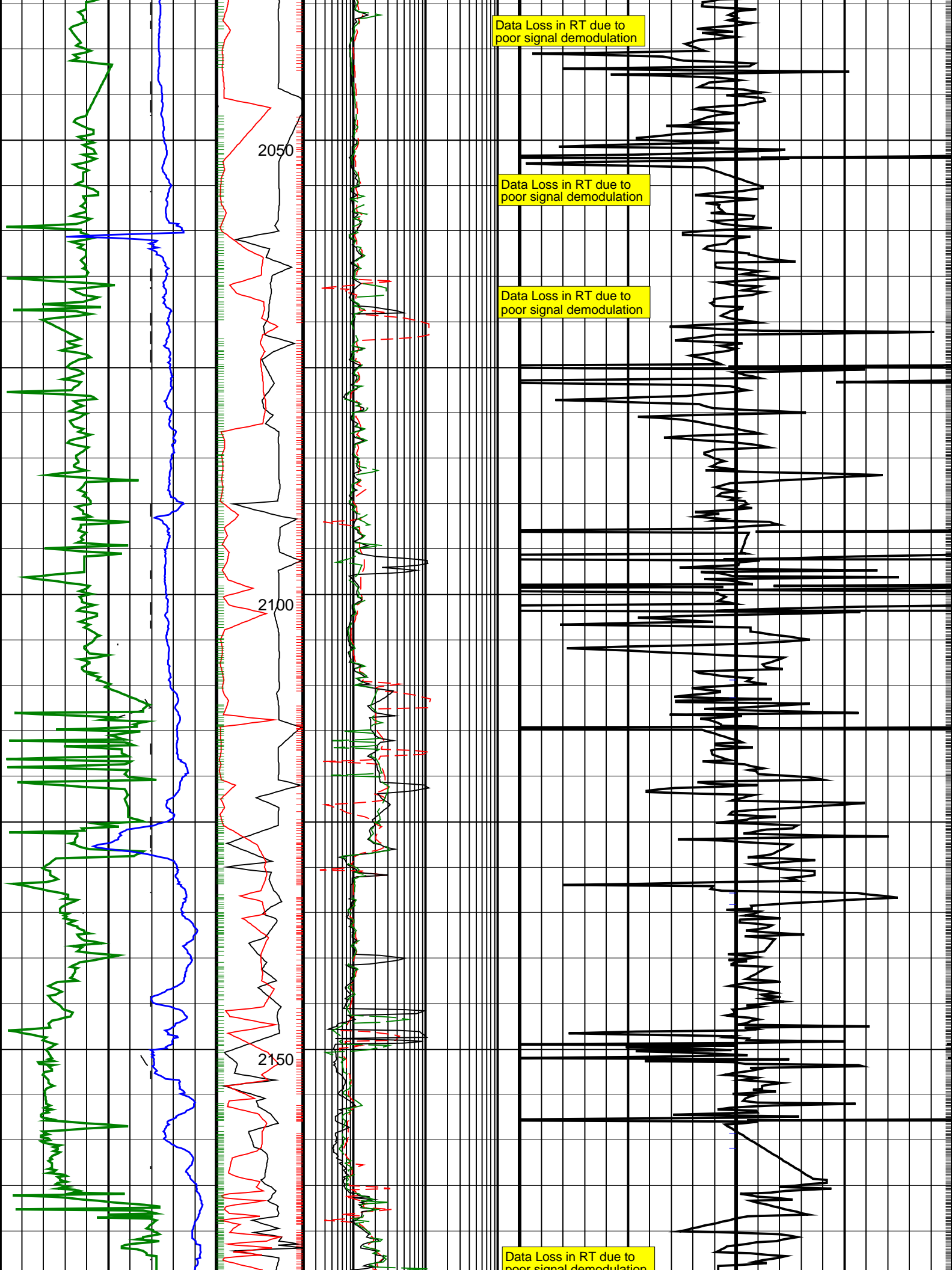


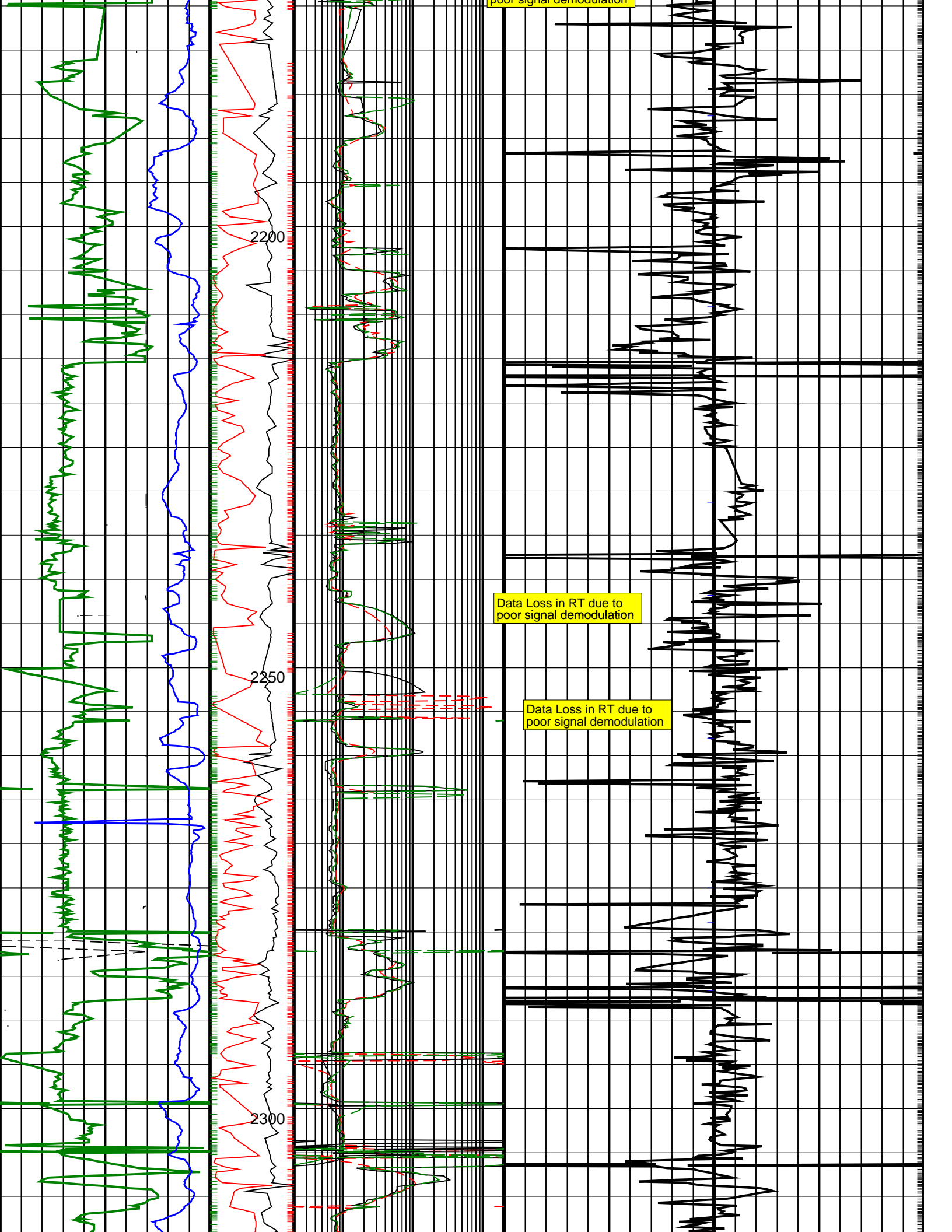
Data Loss in RT due to poor signal demodulation

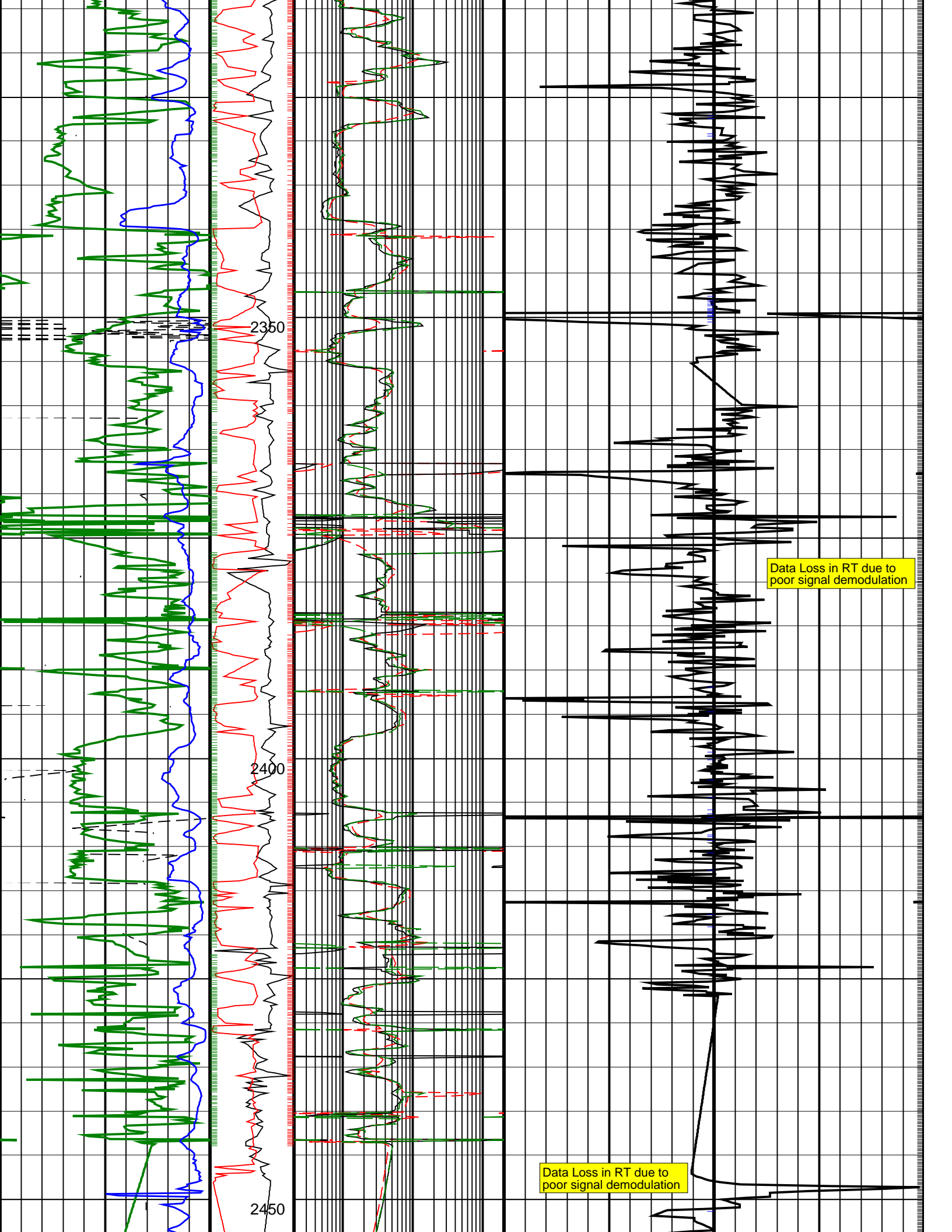
Data Loss in RT due to poor signal demodulation

Data Loss in RT due to poor signal demodulation

Data Loss in RT due to poor signal demodulation







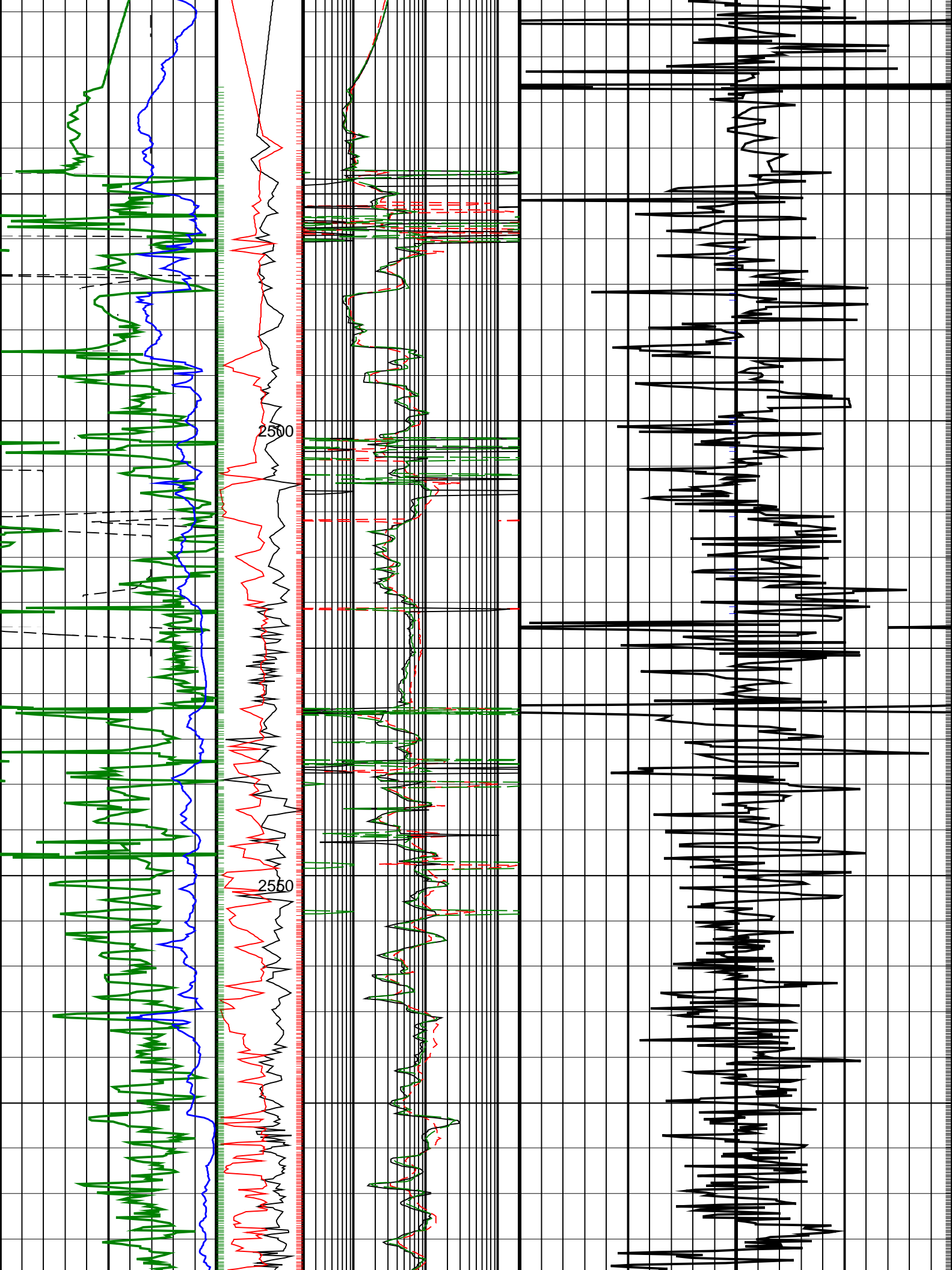
2350

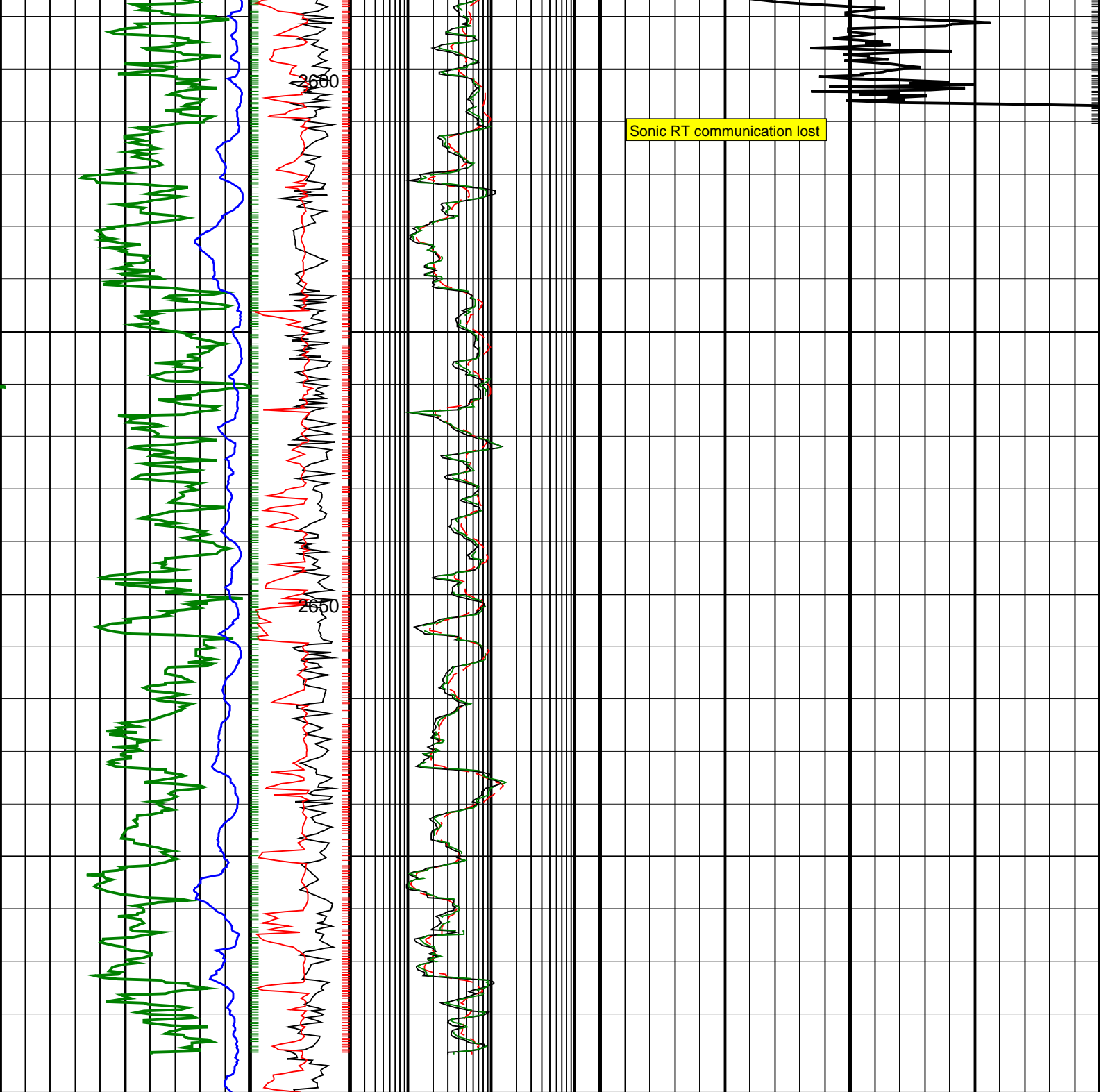
2400

2450

Data Loss in RT due to poor signal demodulation

Data Loss in RT due to poor signal demodulation





<p>ROP*5 (ROP5) (M/HR)</p> <p>200 0</p>	<p>PKPK_RPM (Stick_RT) (RPM)</p> <p>0 500</p>	<p>ARC BHCORR Attenuation Resistivity 40-in. at 2 MHz, Real-Time (A40H_RT) (OHMM)</p> <p>0.2 200</p>	<p>Delta-T Compressional, Real-Time (DTCO_RT) (US/F)</p> <p>140 40</p>
<p>Average Borehole Diameter, Real-Time (ADIA_ADN_RT) (IN)</p> <p>6 16</p>	<p>MWD Collar RPM (CRPM_RT) (RPM)</p> <p>0 250</p>	<p>ARC BHCORR Phase-Shift Resistivity 16-in. at 2 MHz, Real-Time (P16H_RT) (OHMM)</p> <p>0.2 200</p>	
<p>ARC Gamma Ray, Real-Time (ARC_GR_RT) (GAPI)</p> <p>0 200</p>		<p>ARC BHCORR Phase-Shift Resistivity 40-in. at 2 MHz, Real-Time (P40H_RT) (OHMM)</p> <p>0.2 200</p>	

PIP SUMMARY

Gamma Ray Samples

IDEAL Version: ID13_0C_11

IDF