

# Bazzard-1 500MD RT Log

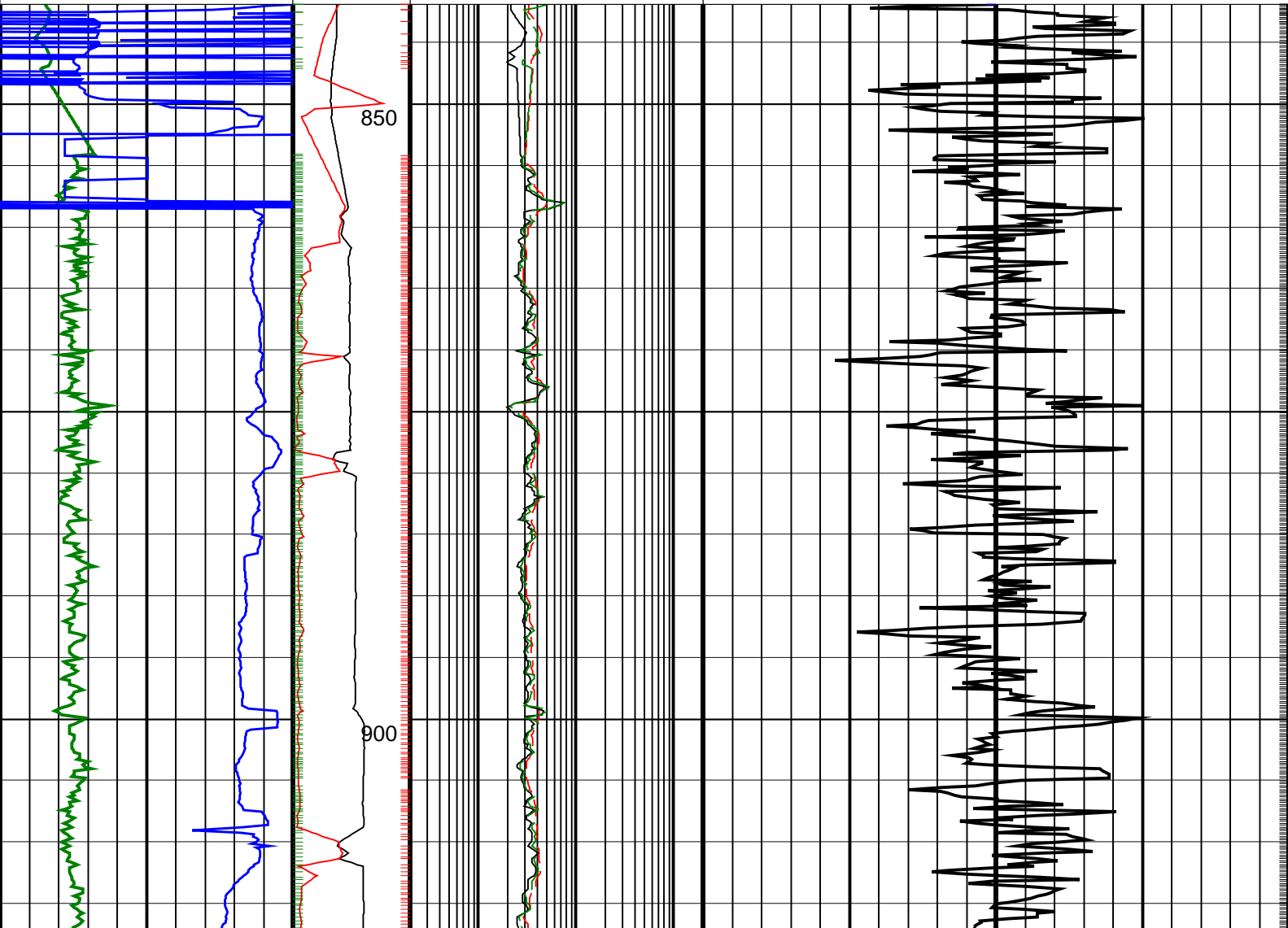
Format: Bazzard\_1 ARCSonic RT Log      Vertical Scale: 1:500      Graphics File Created: 30-Sep-2008 05:22

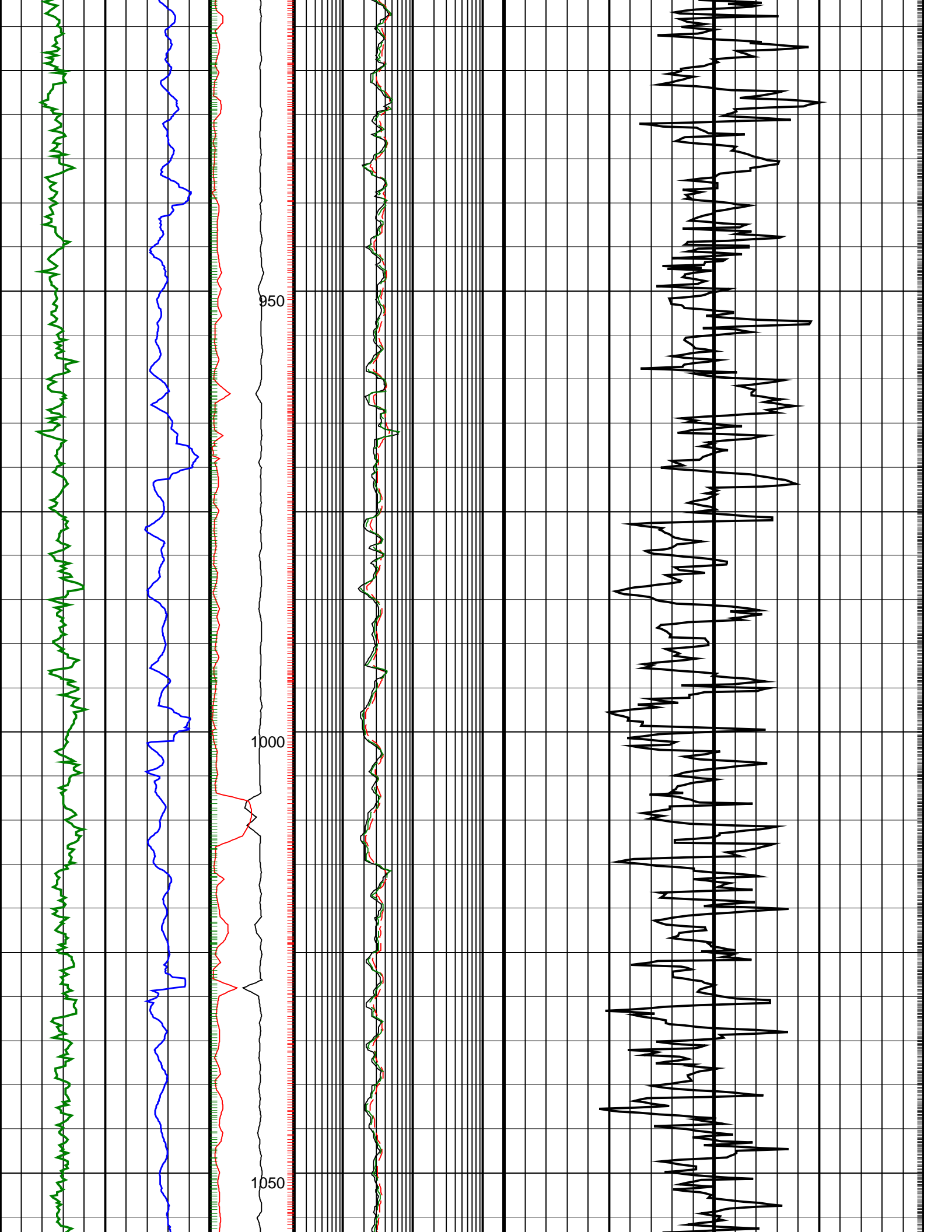
Parameters		
DLIS Name	Description	Value
DO	Depth Offset	0.0 m

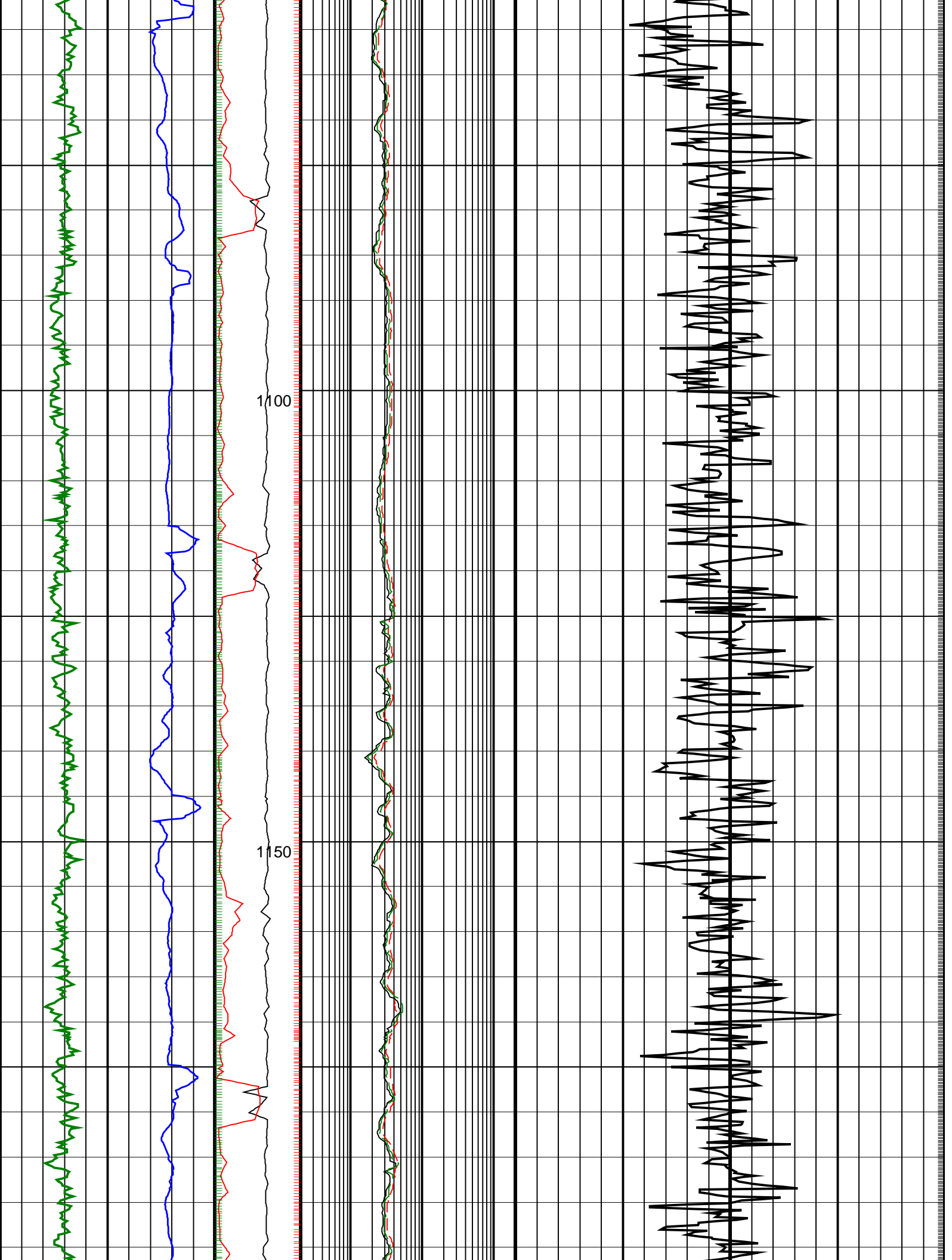
PIP SUMMARY

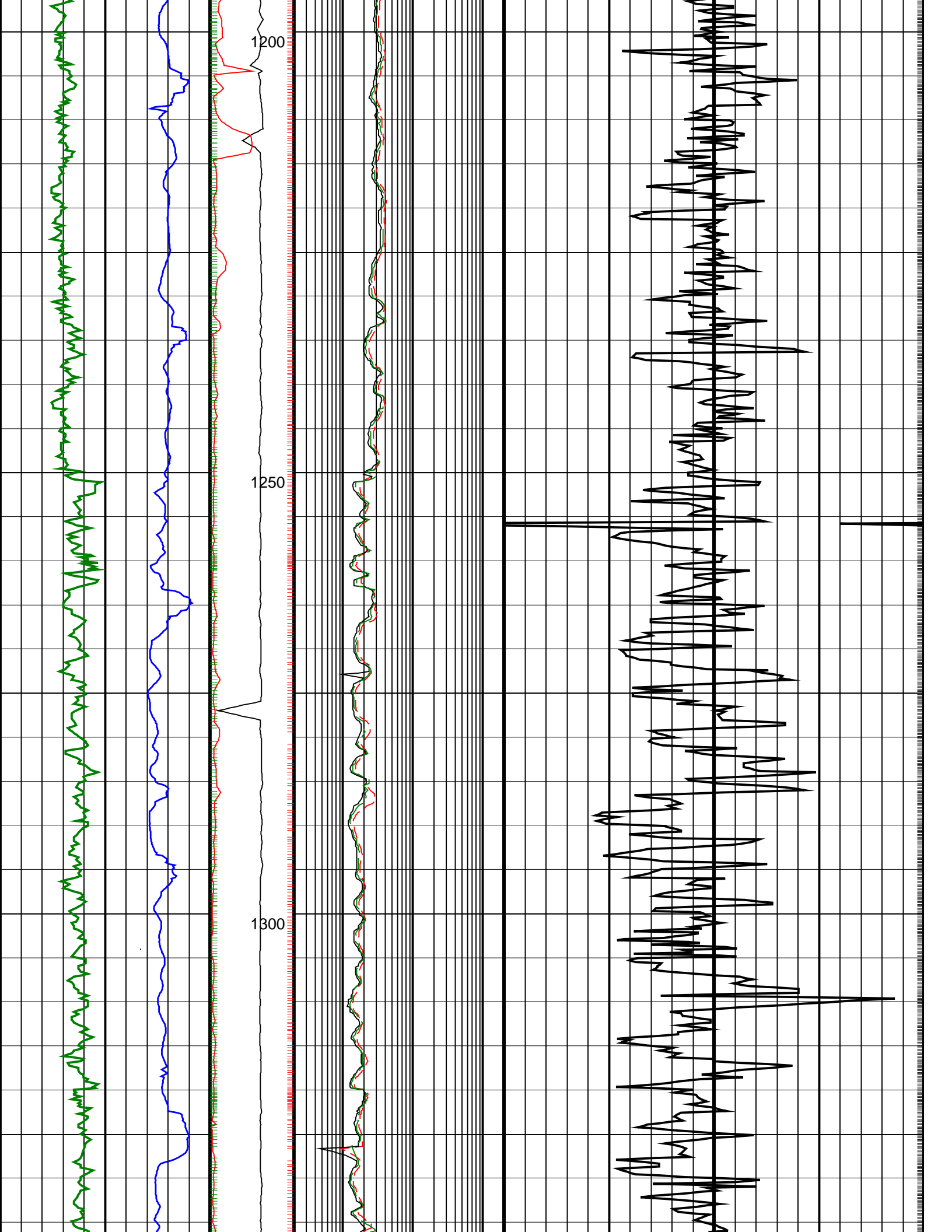
└ Gamma Ray Samples      Delta-T Samples └  
└ Resistivity Samples      Neutron Samples └

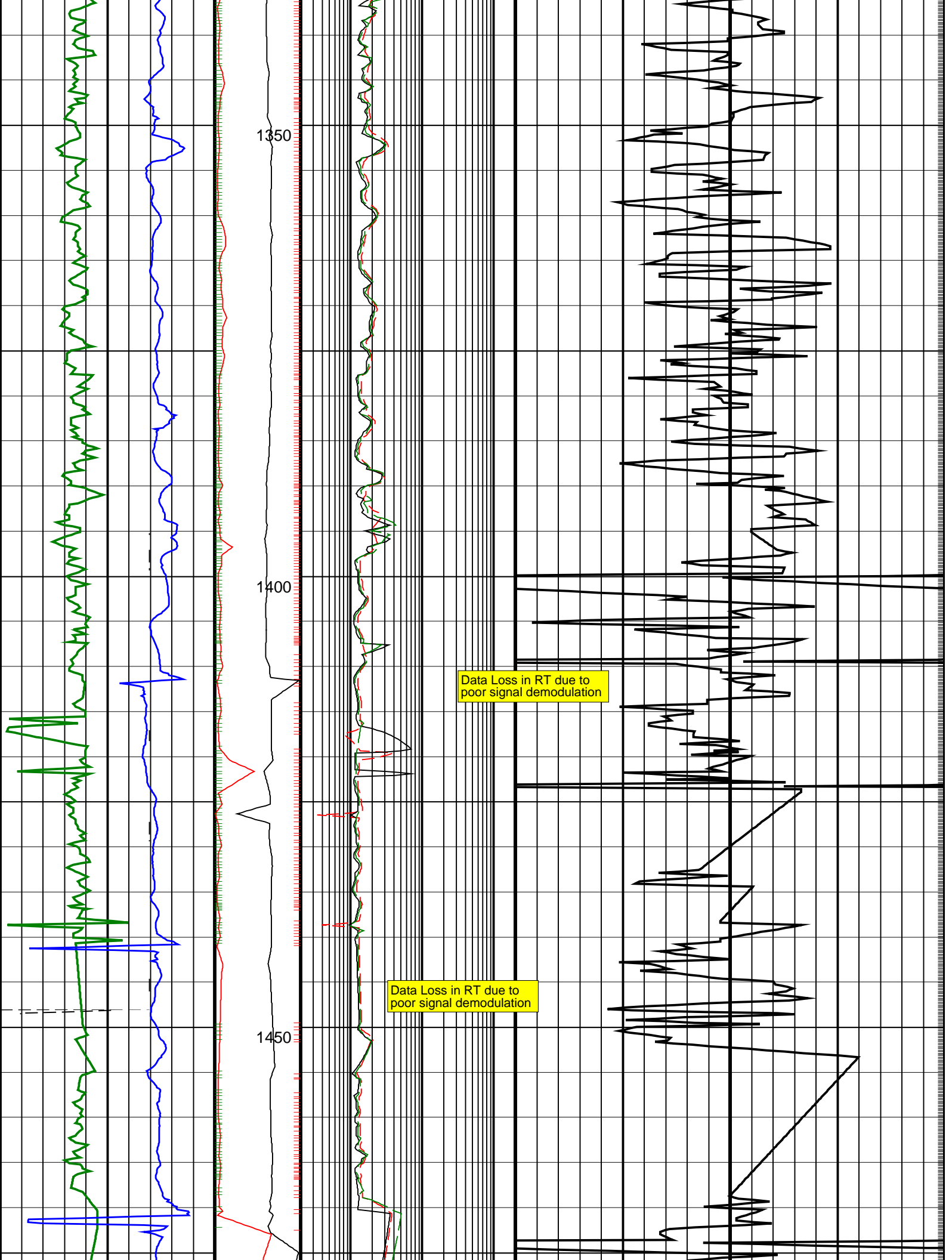
ARC Gamma Ray, Real-Time (ARC_GR_RT) 0 (GAPI) 200	ARC BHCorr Phase-Shift Resistivity 40-in. at 2 MHz, Real-Time (P40H_RT) 0.2 (OHMM) 200	
Average Borehole Diameter, Real-Time (ADIA_ADN_RT) 6 (IN) 16	MWD Collar RPM (CRPM_RT) (RPM) 0 250	ARC BHCorr Phase-Shift Resistivity 16-in. at 2 MHz, Real-Time (P16H_RT) 0.2 (OHMM) 200
ROP*5 (ROP5) 200 (M/HR) 0	PKPK_RPM (Stick_RT) (RPM) 0 500	ARC BHCorr Attenuation Resistivity 40-in. at 2 MHz, Real-Time (A40H_RT) 0.2 (OHMM) 200
		Delta-T Compressional, Real-Time (DTCO_RT) 140 (US/F) 40

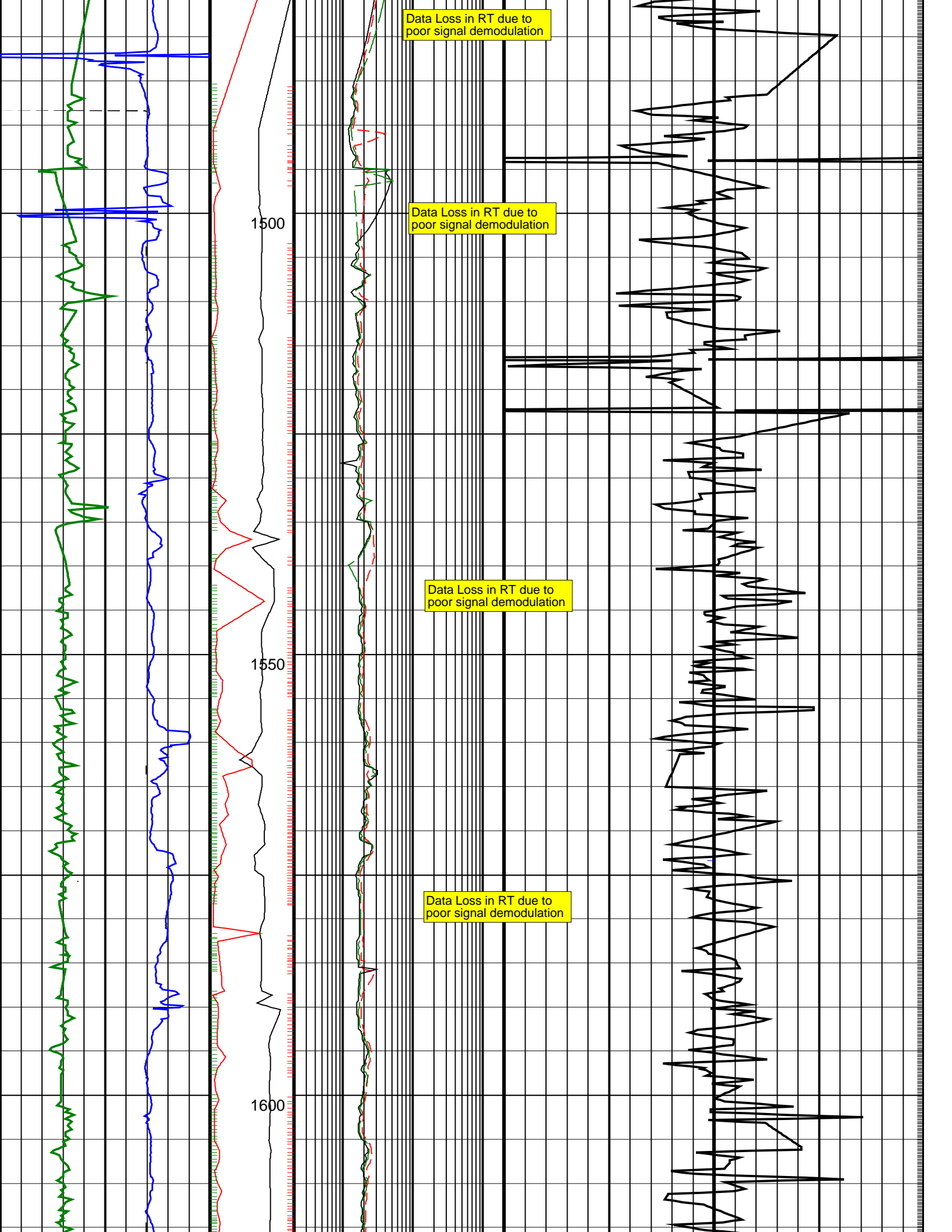


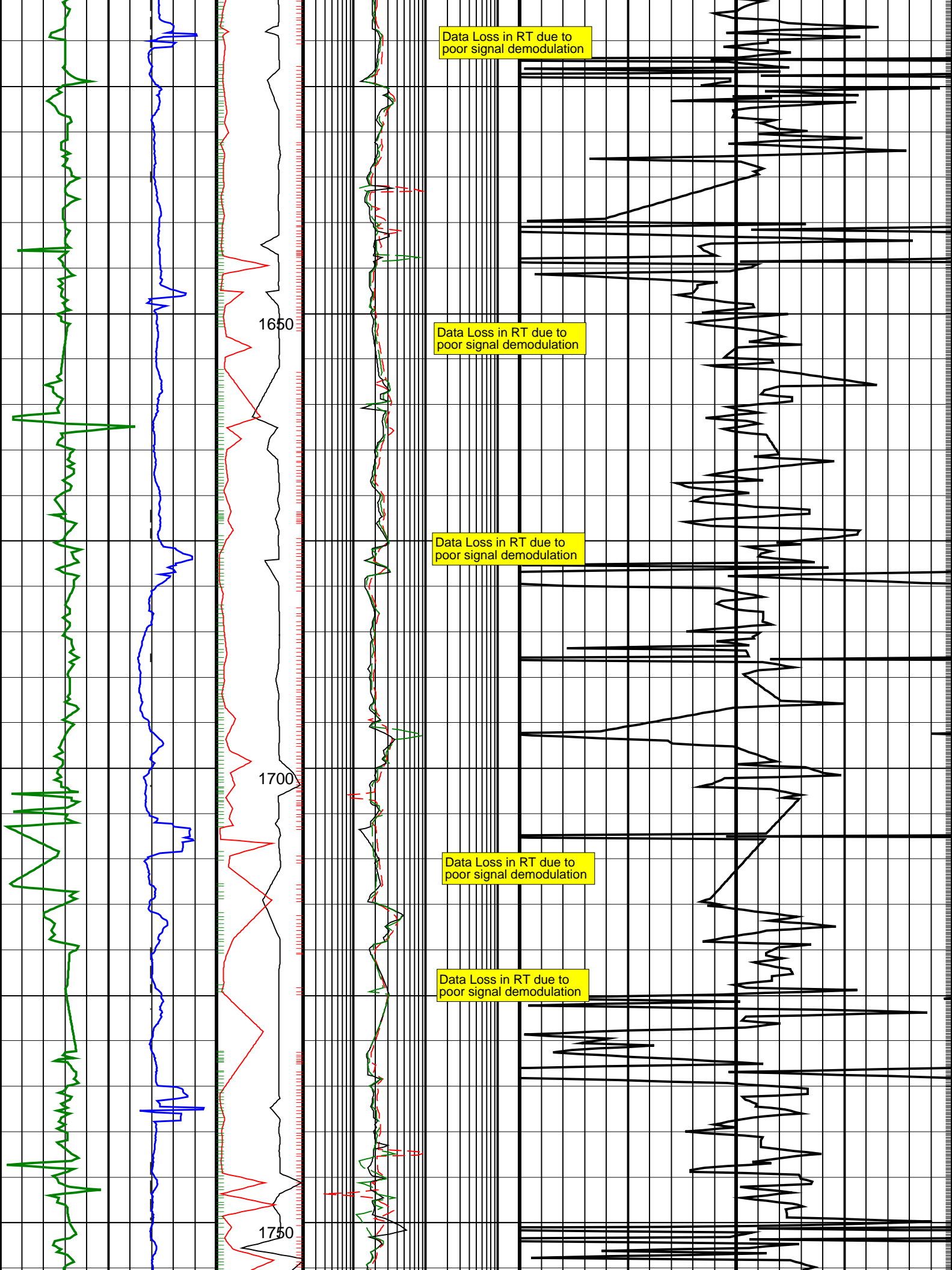


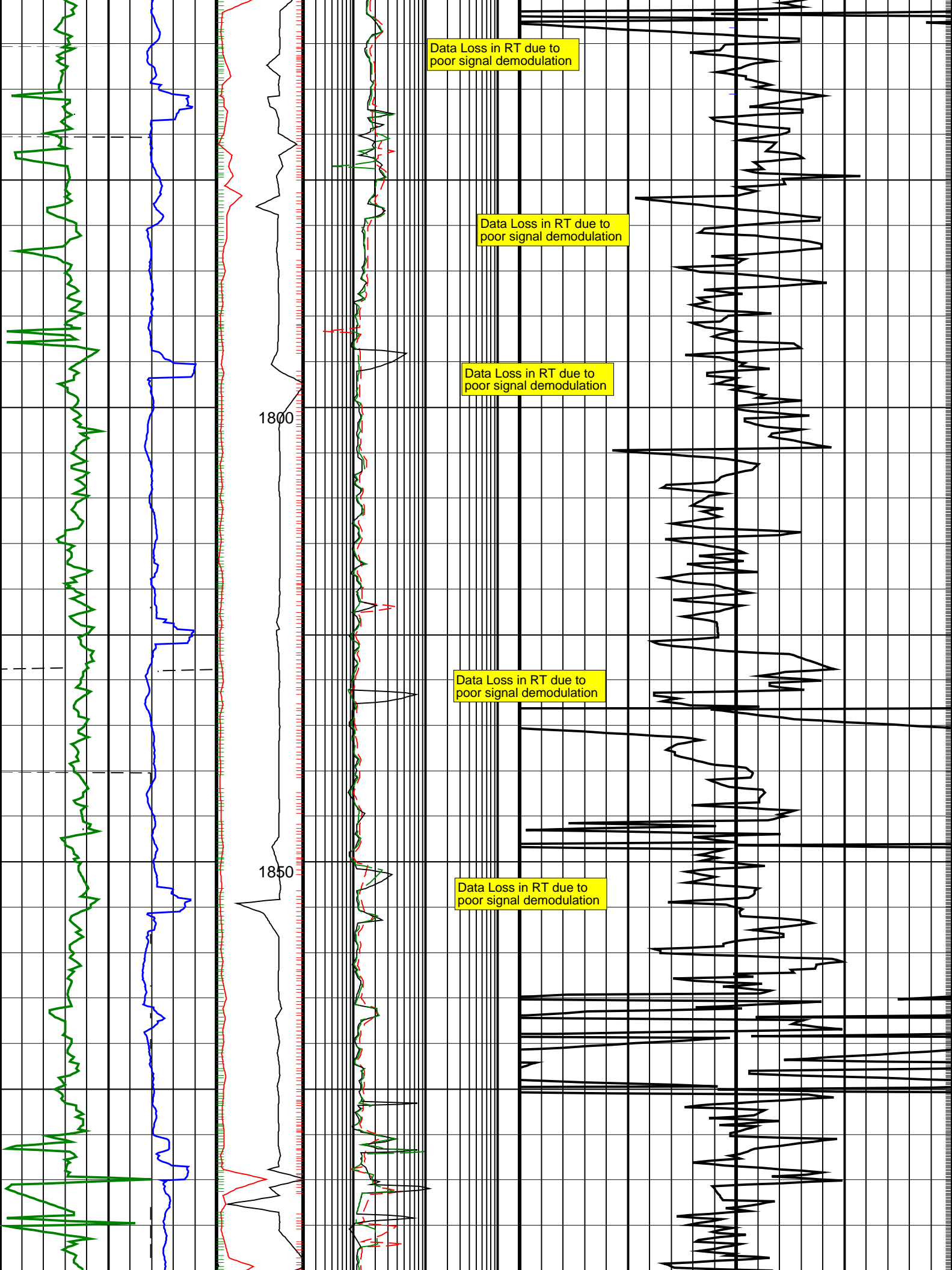


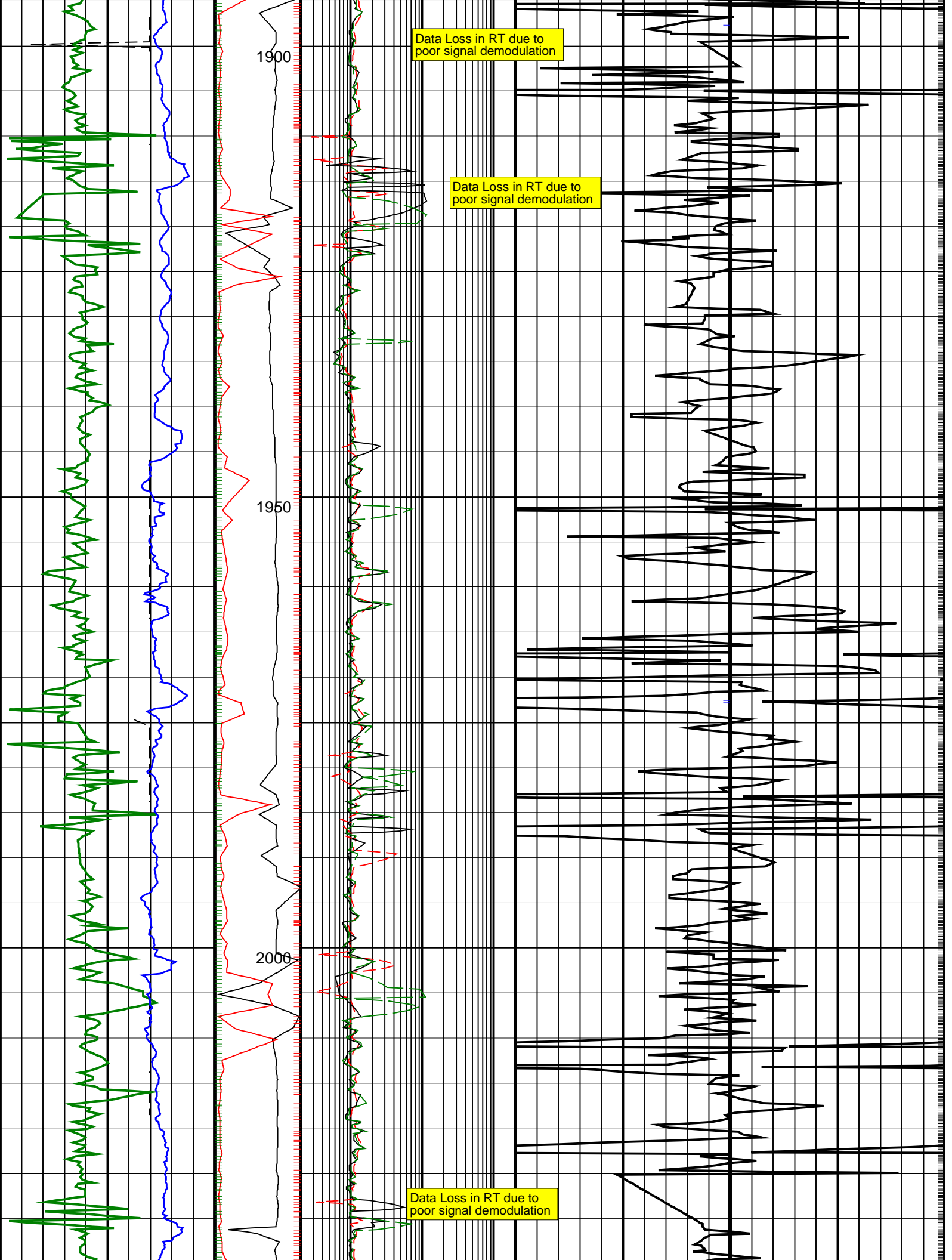


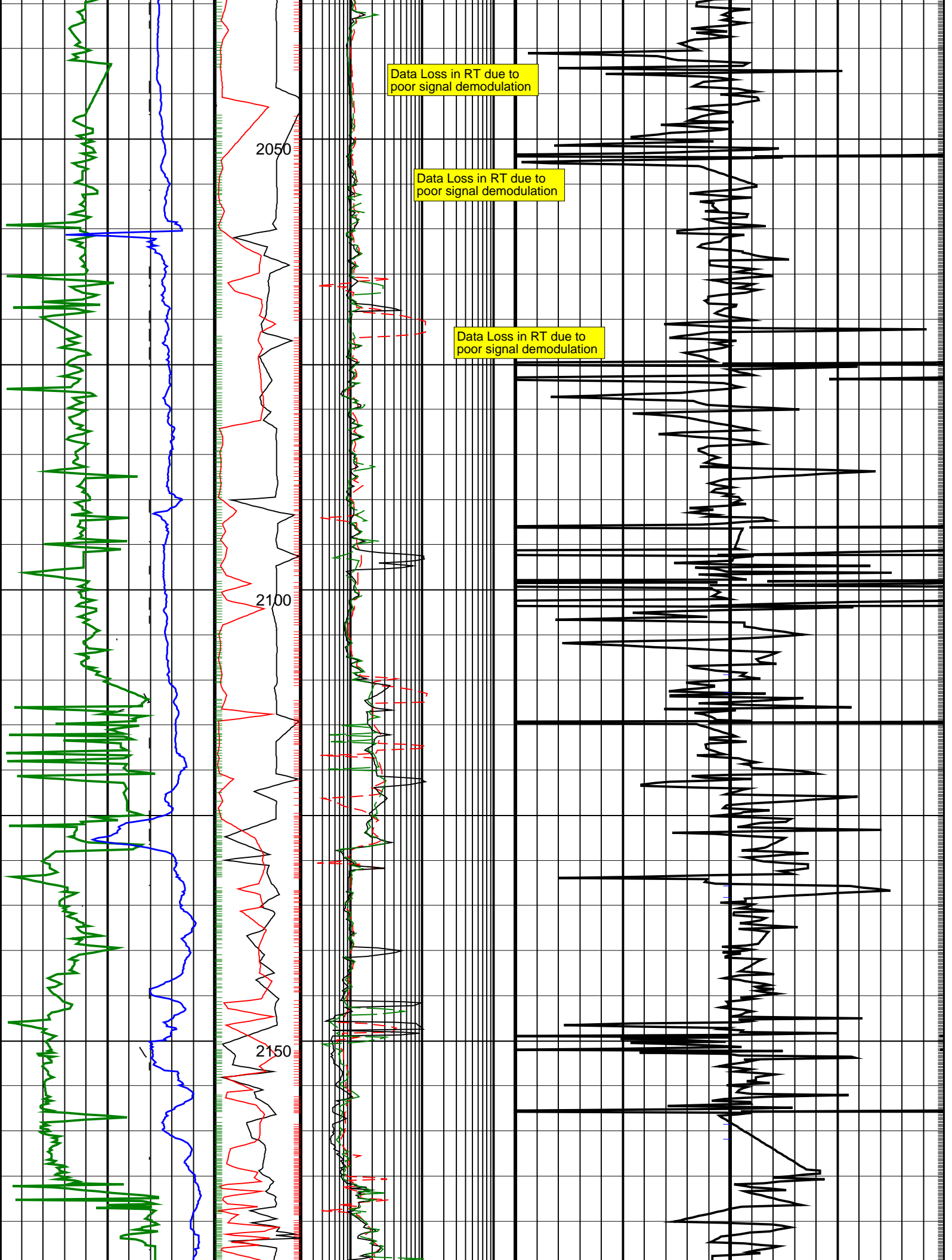


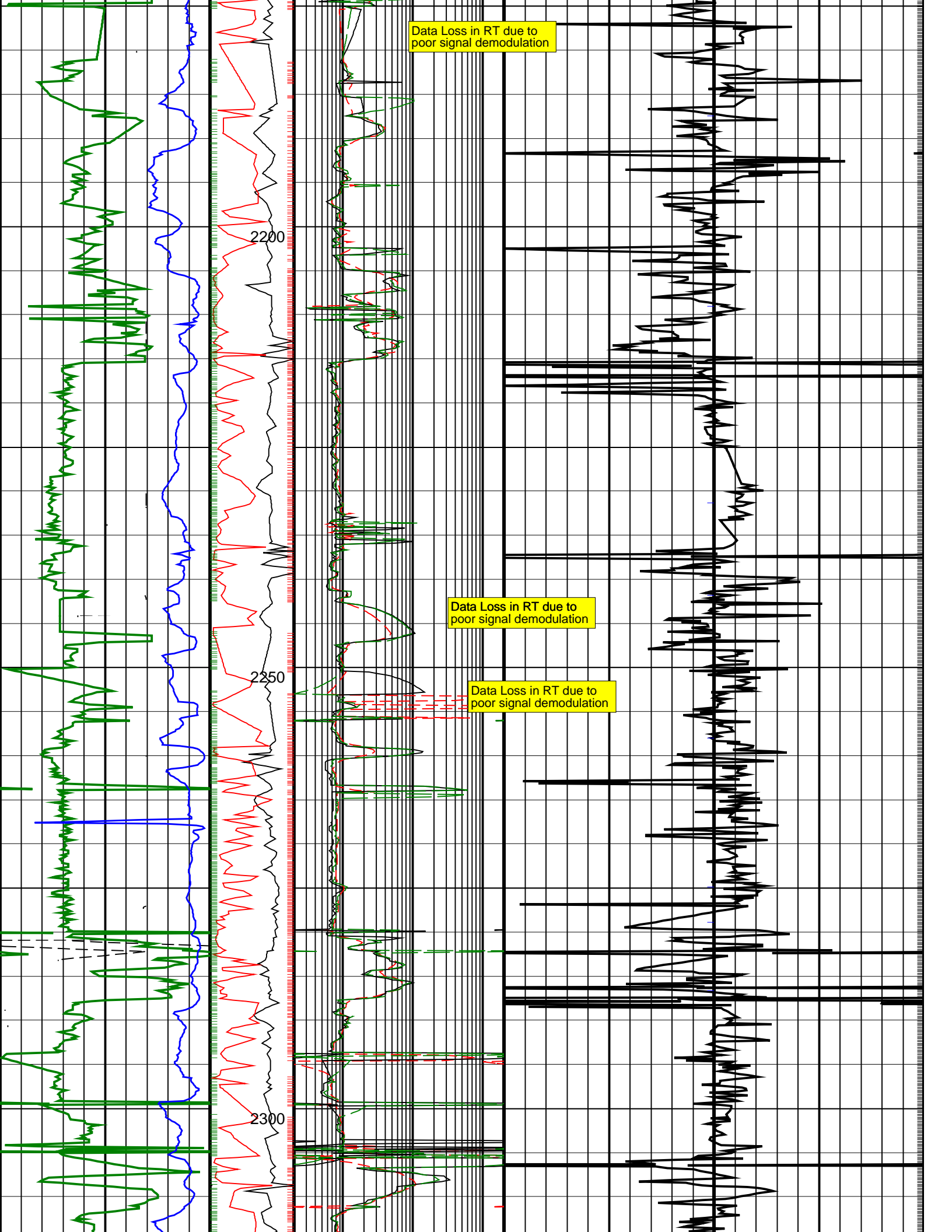


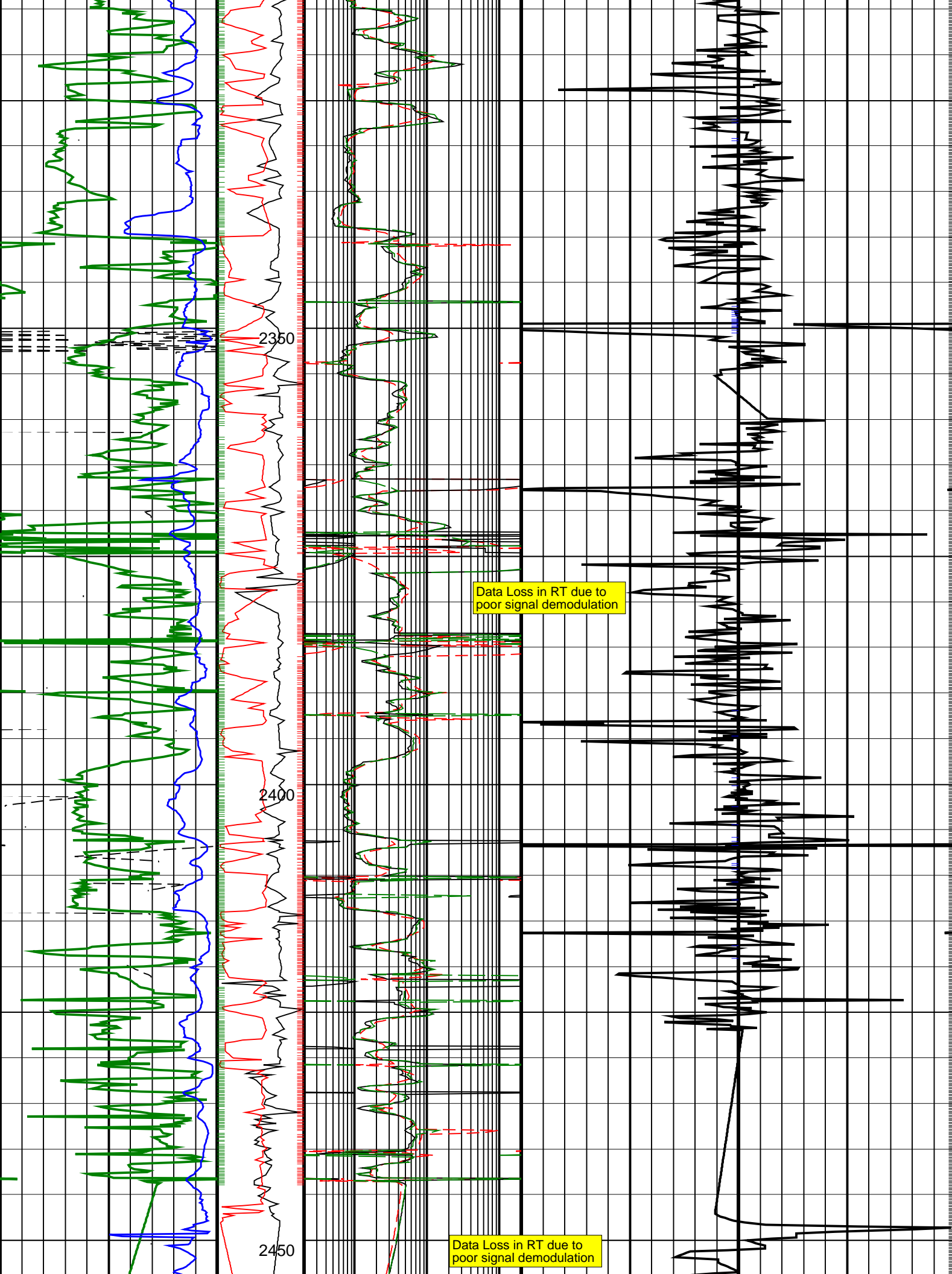


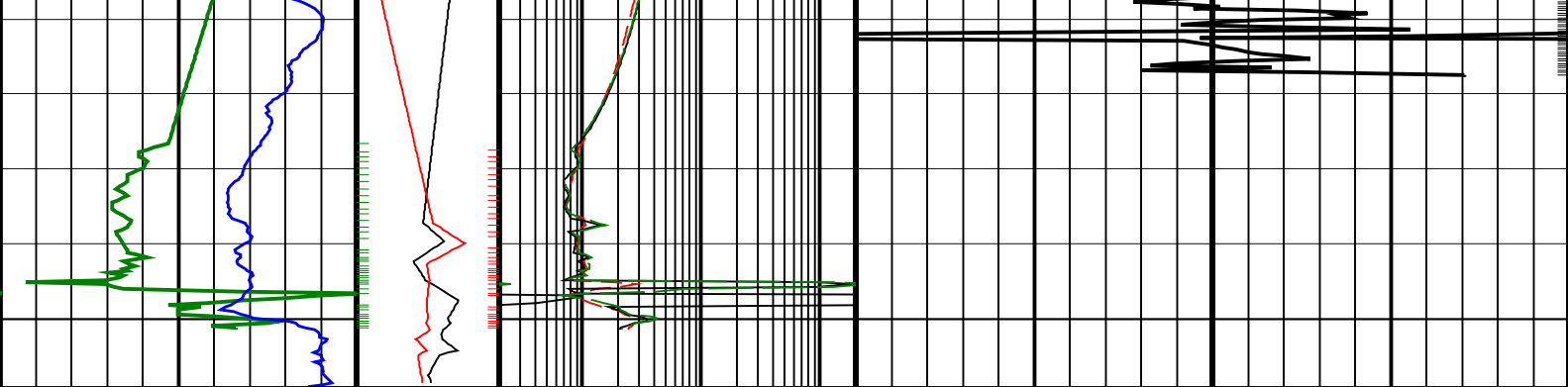












<div>ROP*5 (ROP5)</div> <div>200 (M/HR) 0</div>	<div>PKPK_RPM (Stick_RT) (RPM)</div> <div>0 500</div>	<div>ARC BHCorr Attenuation Resistivity 40-in. at 2 MHz, Real-Time (A40H_RT) (OHMM)</div> <div>0.2 200</div>	<div>Delta-T Compressional, Real-Time (DTCO_RT)</div> <div>140 (US/F) 40</div>
<div>Average Borehole Diameter, Real-Time (ADIA_ADN_RT) (IN)</div> <div>6 16</div>	<div>MWD Collar RPM (CRPM_RT) (RPM)</div> <div>0 250</div>	<div>ARC BHCorr Phase-Shift Resistivity 16-in. at 2 MHz, Real-Time (P16H_RT) (OHMM)</div> <div>0.2 200</div>	
<div>ARC Gamma Ray, Real-Time (ARC_GR_RT) (GAPI)</div> <div>0 200</div>		<div>ARC BHCorr Phase-Shift Resistivity 40-in. at 2 MHz, Real-Time (P40H_RT) (OHMM)</div> <div>0.2 200</div>	

PIP SUMMARY			
└ Gamma Ray Samples		Delta-T Samples ┐	
┐ Resistivity Samples		Neutron Samples ┐	

IDEAL Version: ID13_0C_11			
IDF			