

# Bazzard-1 500MD RT log

Format: Bazzard\_1 ARCSonic RT Log\_1

Vertical Scale: 1:500

Graphics File Created: 29-Sep-2008 06:19

## Parameters

DLIS Name

Description

Value

DO

Depth Offset

0.0 m

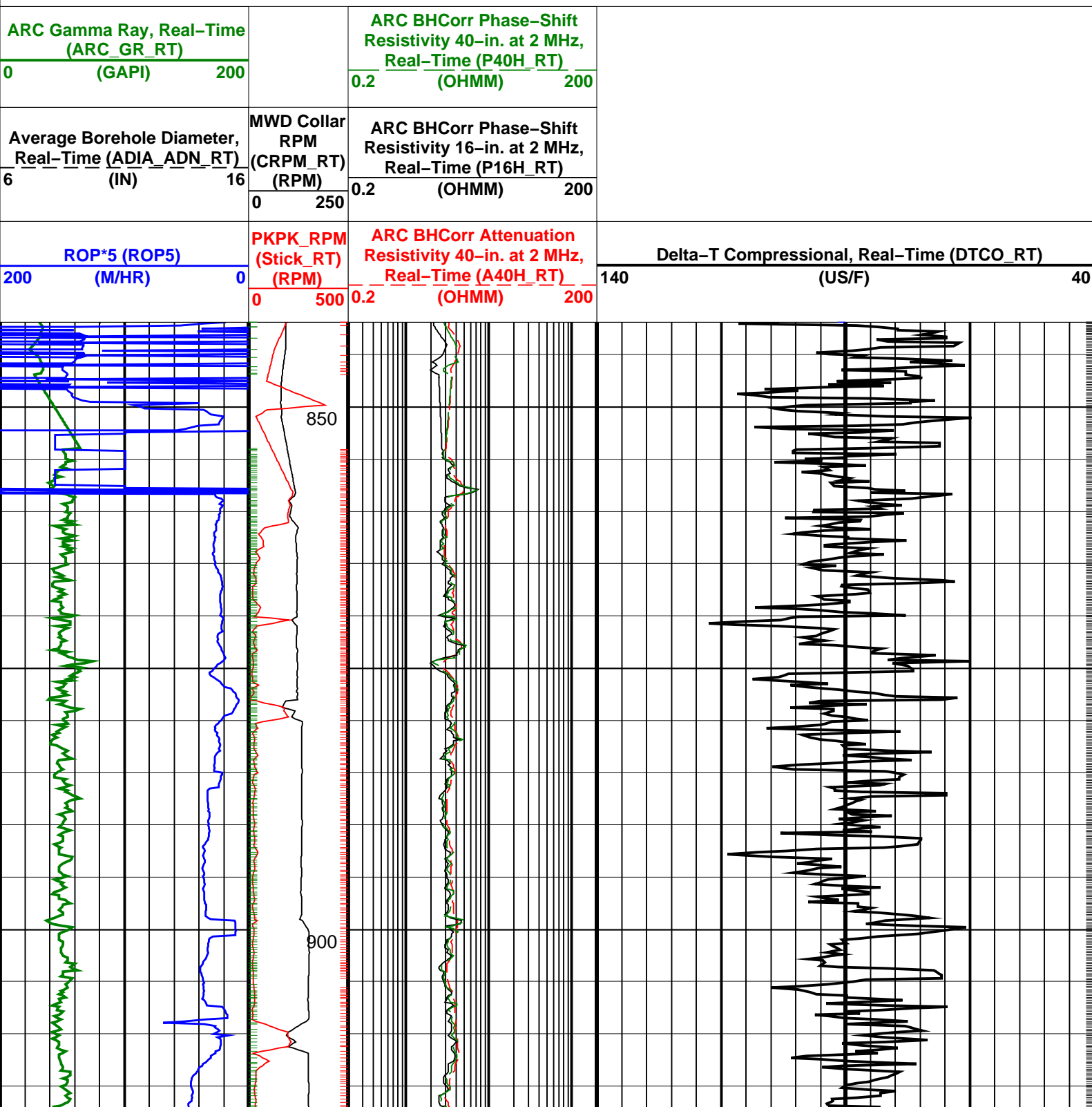
### PIP SUMMARY

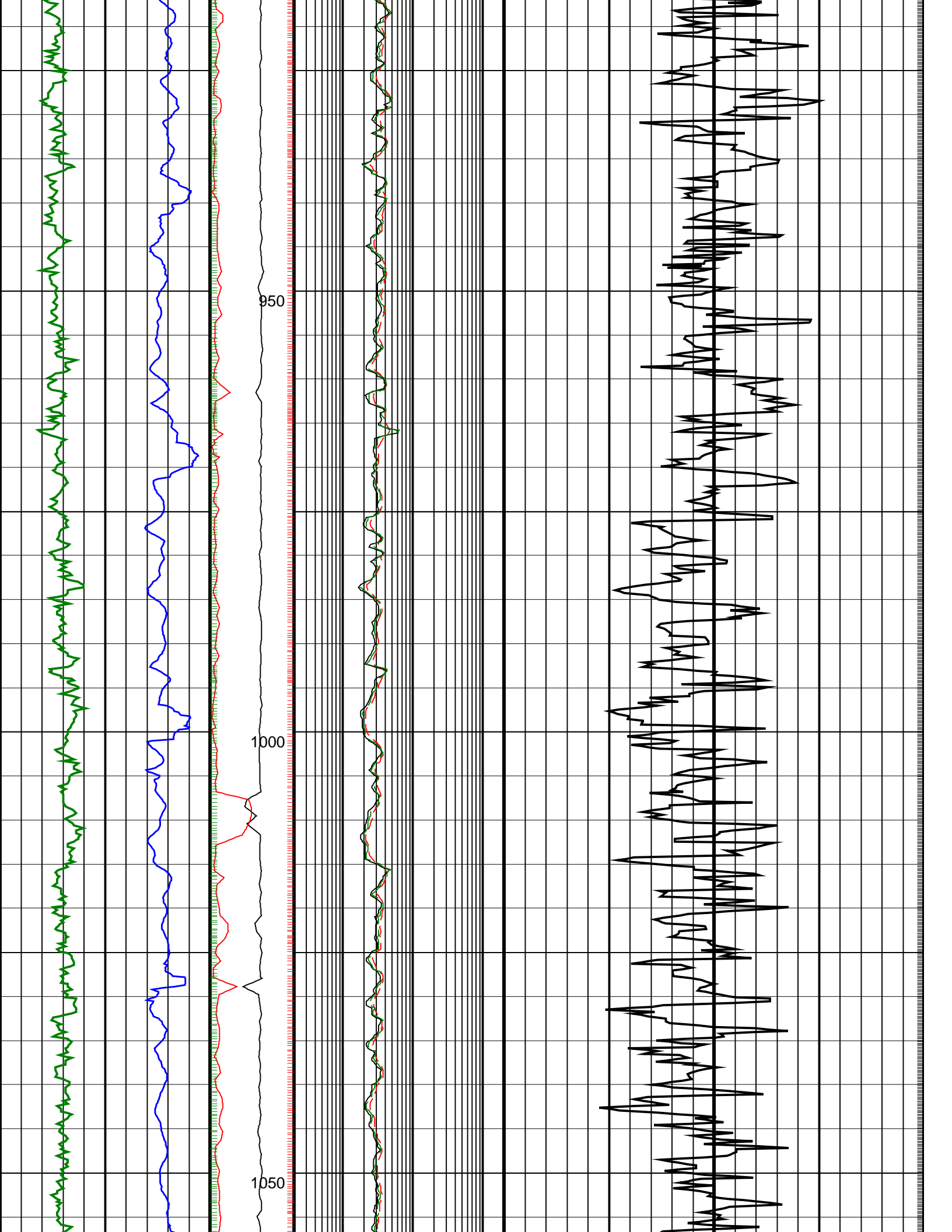
└ Gamma Ray Samples

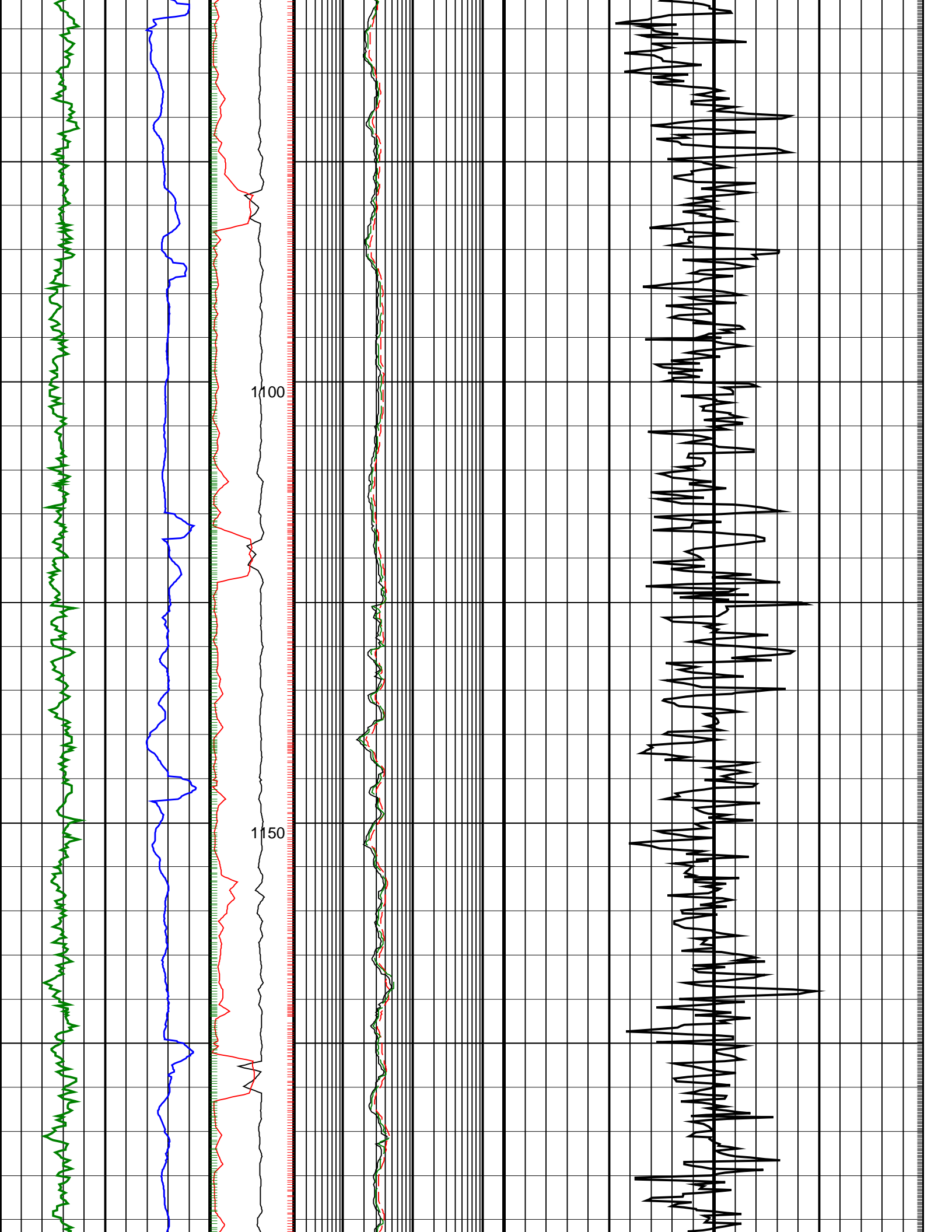
Delta-T Samples └

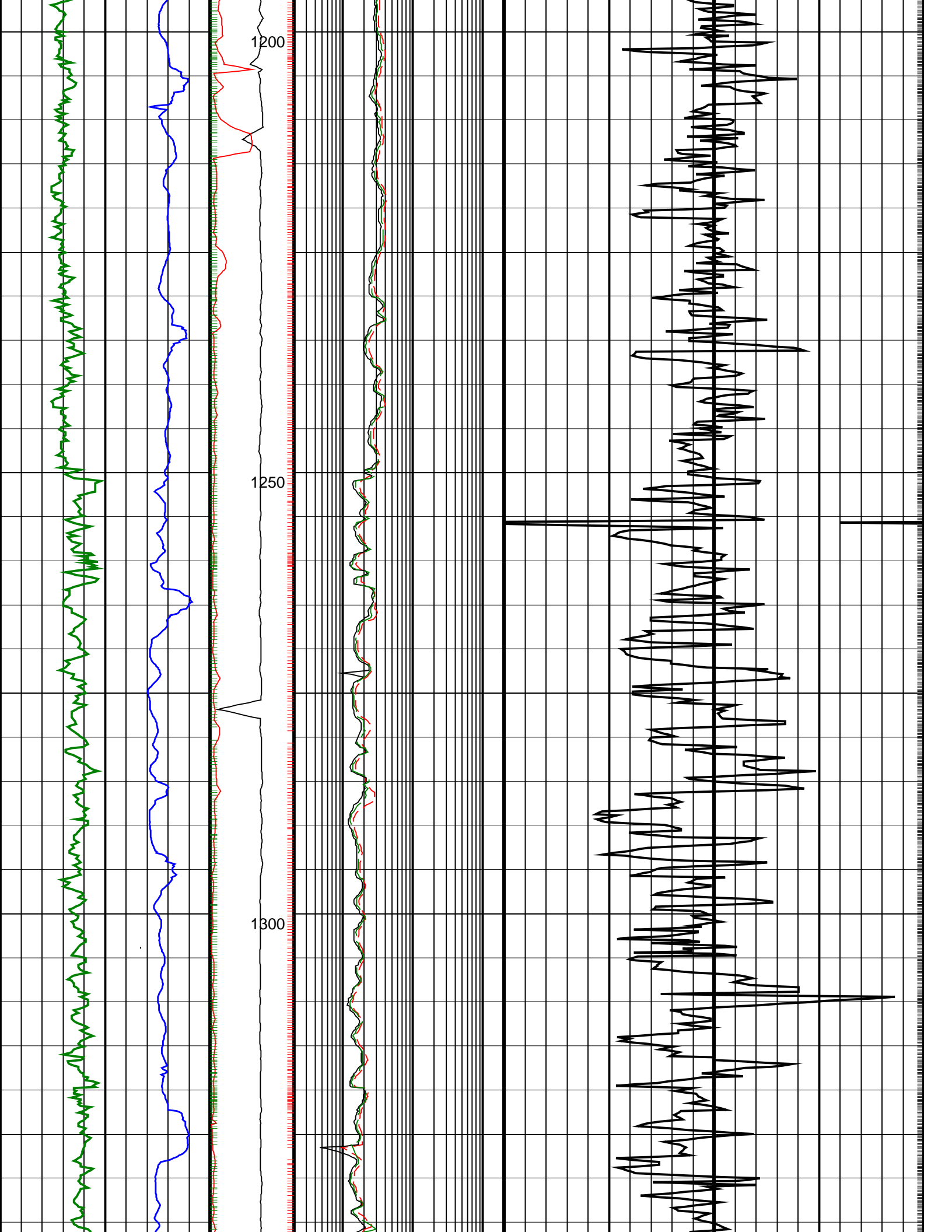
└ Resistivity Samples

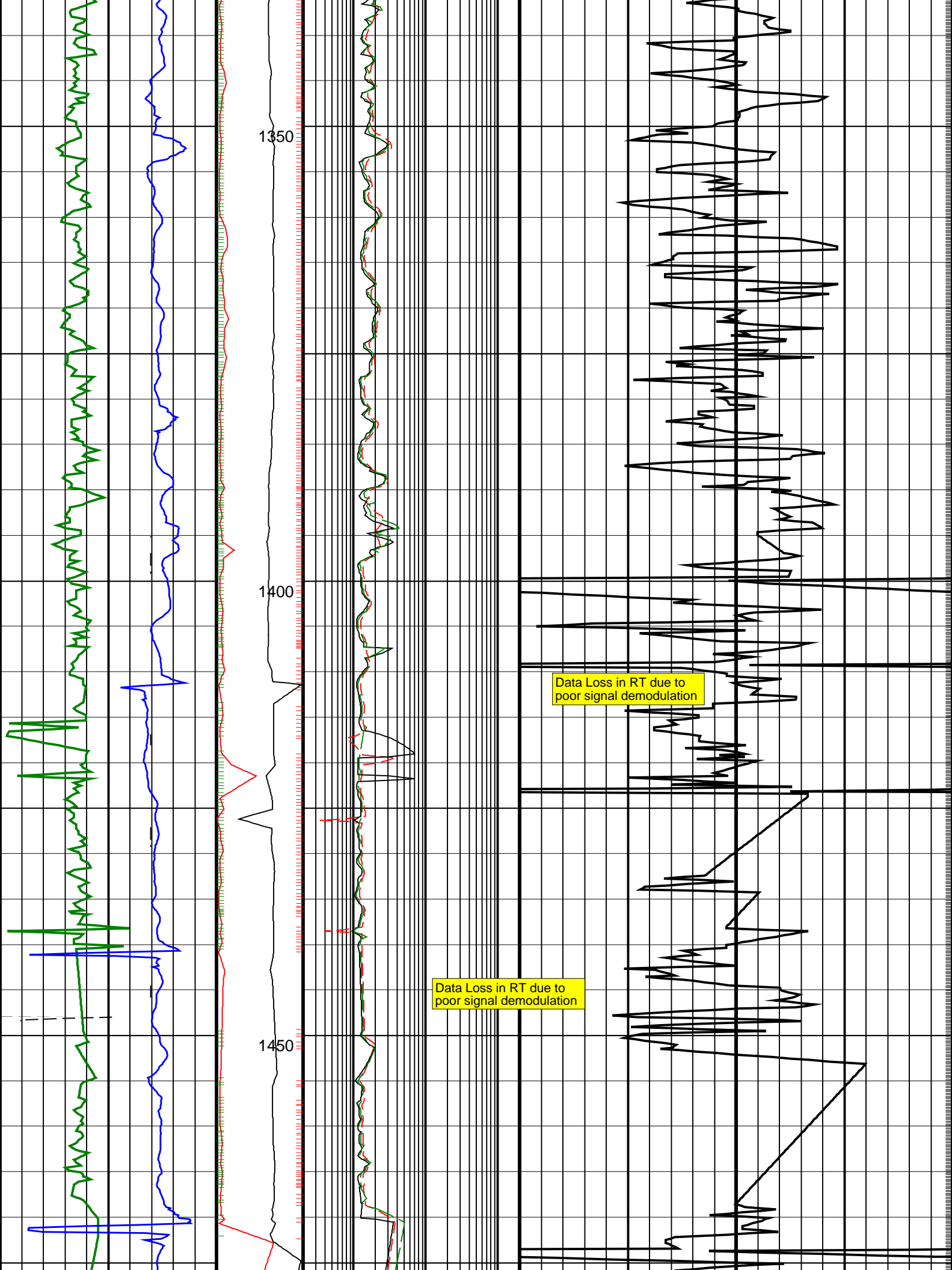
Neutron Samples └

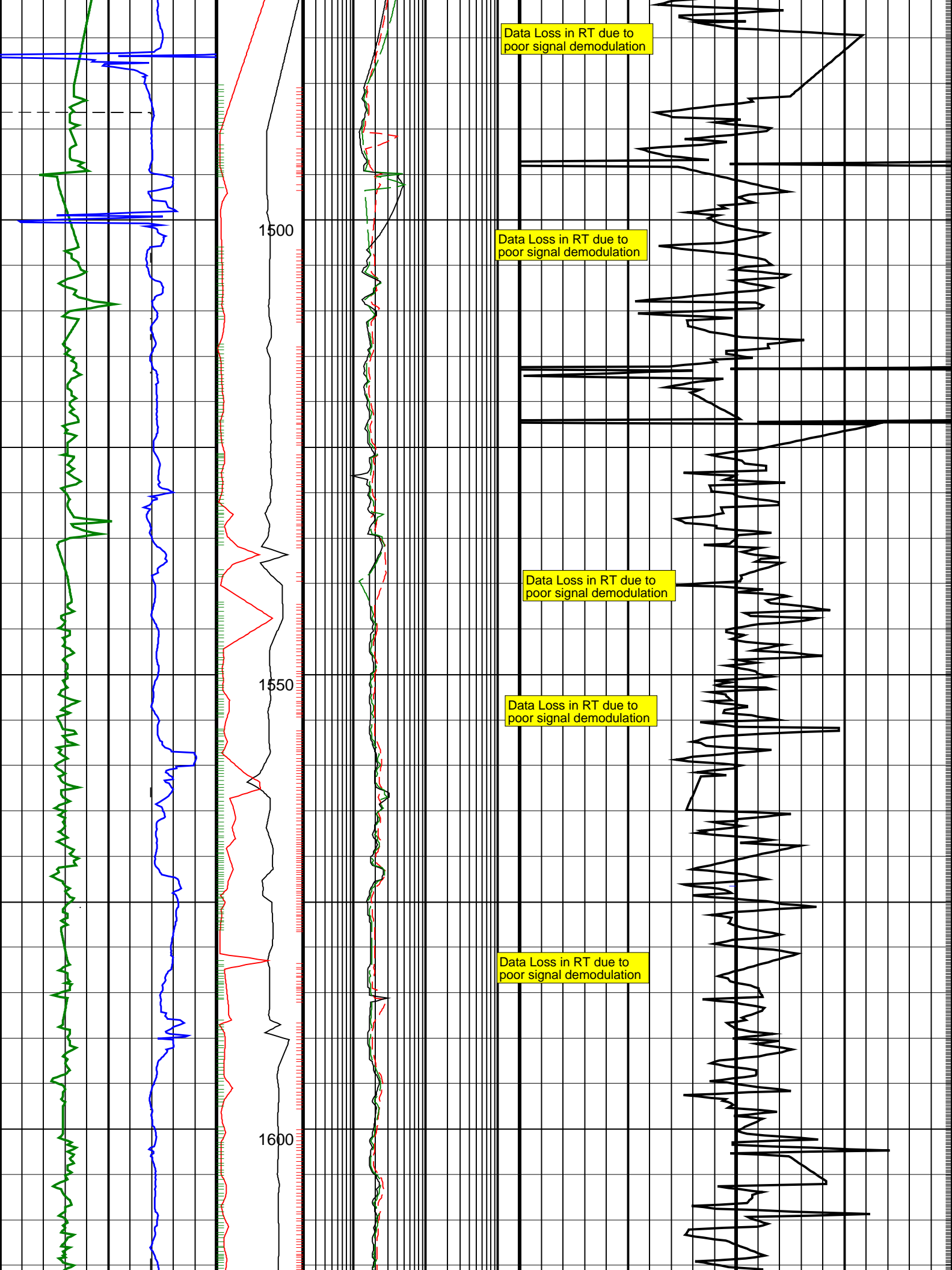


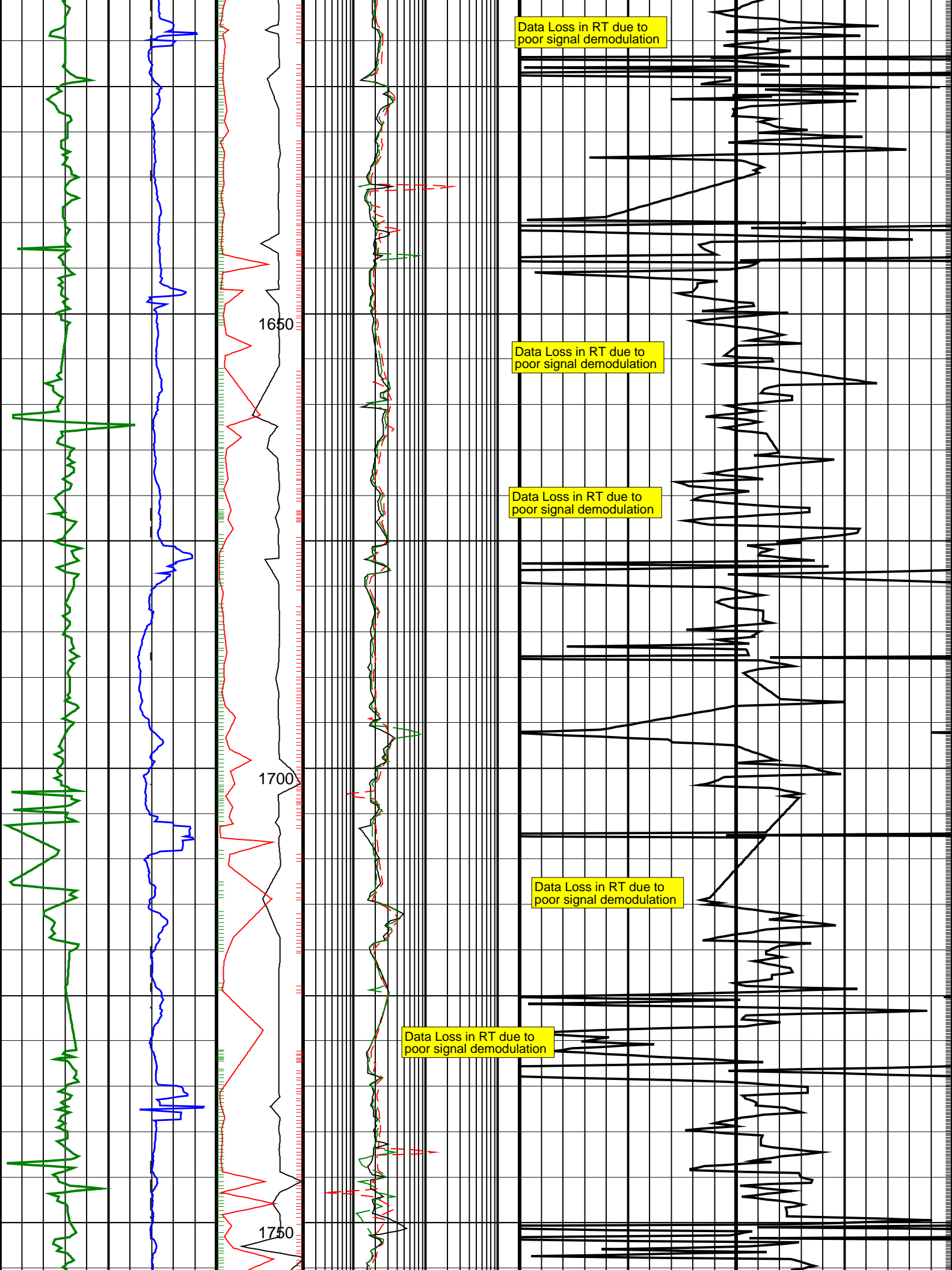


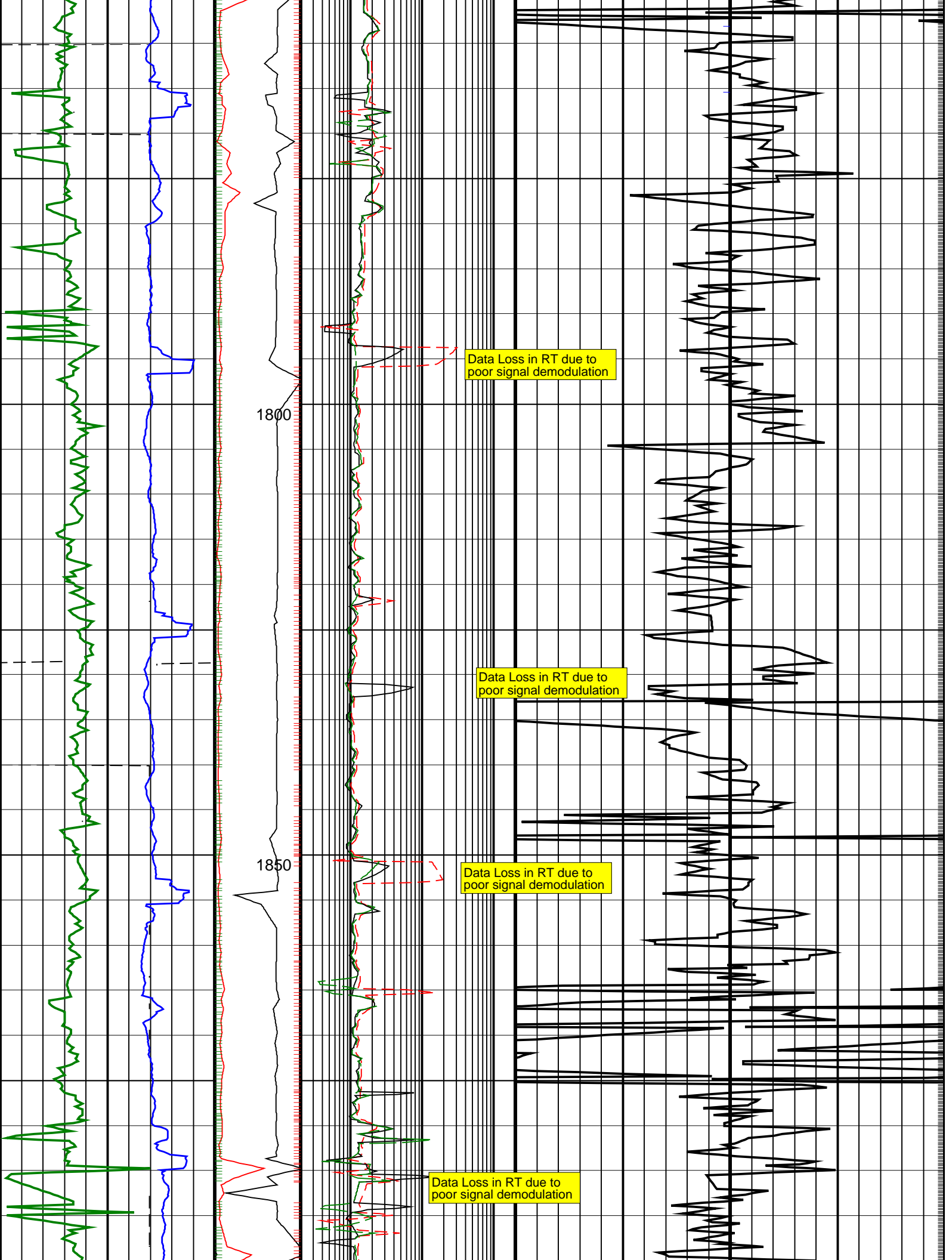




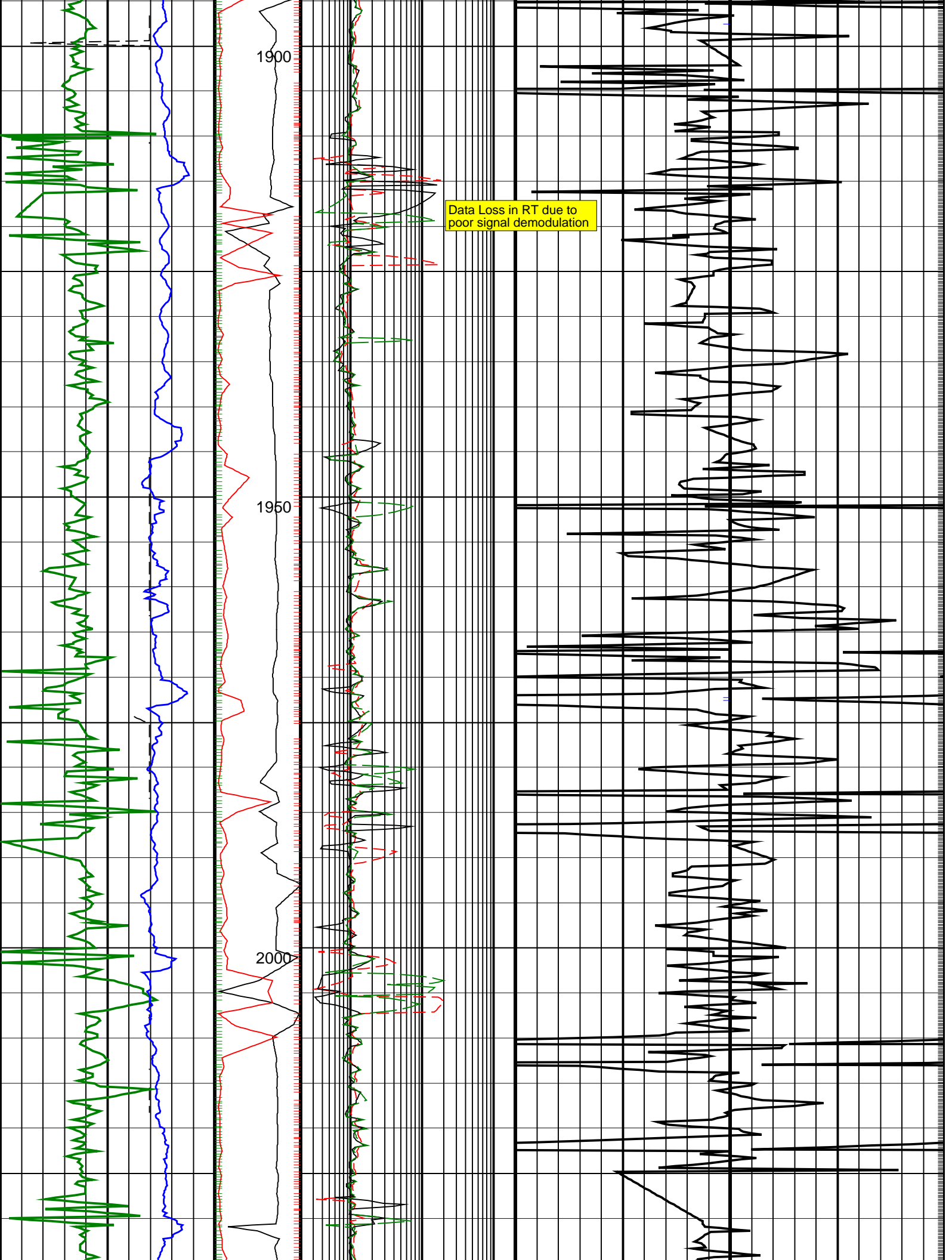


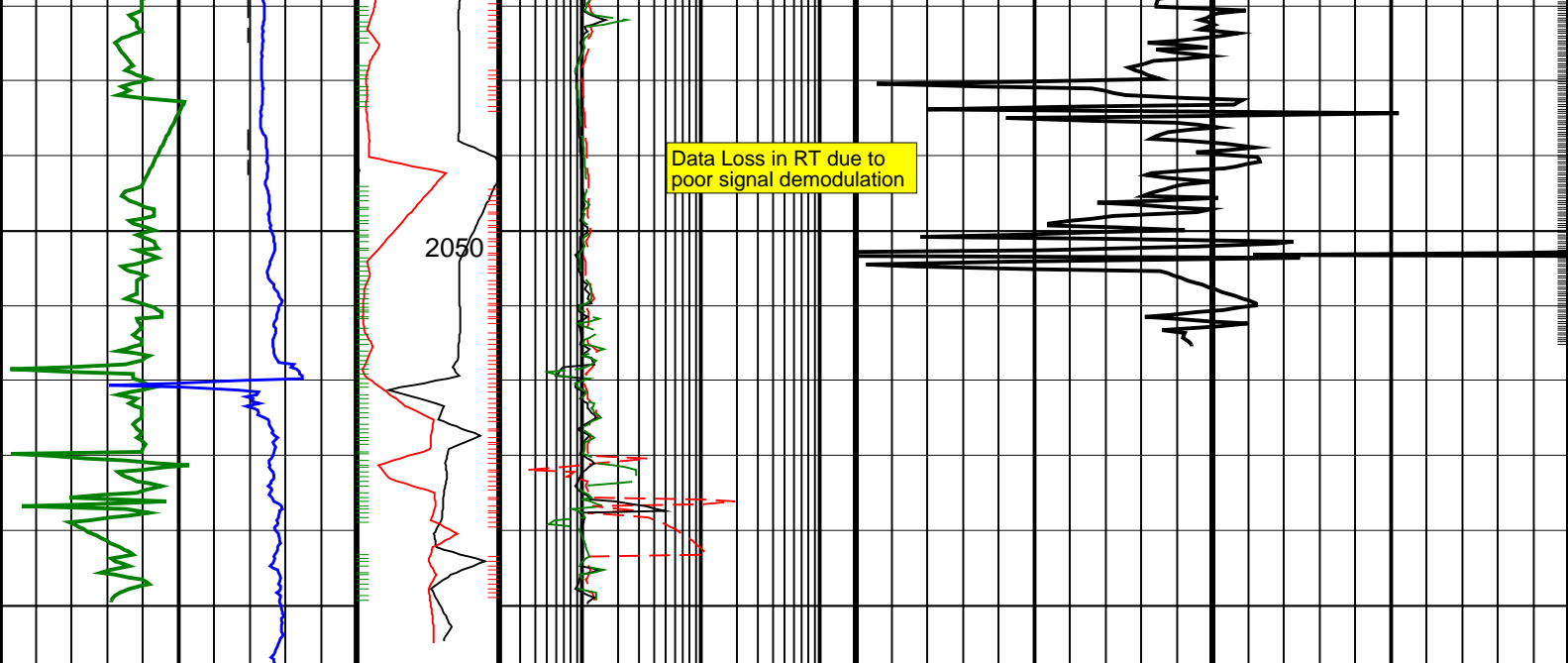












<b>ROP*5 (ROP5)</b> 200 (M/HR) 0	<b>PKPK_RPM (Stick_RT) (RPM)</b> 0 500	<b>ARC BHCORR Attenuation Resistivity 40-in. at 2 MHz, Real-Time (A40H_RT) (OHMM)</b> 0.2 200	<b>Delta-T Compressional, Real-Time (DTCO_RT) (US/F)</b> 140 40
<b>Average Borehole Diameter, Real-Time (ADIA_ADN_RT) (IN)</b> 6 16	<b>MWD Collar RPM (CRPM_RT) (RPM)</b> 0 250	<b>ARC BHCORR Phase-Shift Resistivity 16-in. at 2 MHz, Real-Time (P16H_RT) (OHMM)</b> 0.2 200	
<b>ARC Gamma Ray, Real-Time (ARC_GR_RT) (GAPI)</b> 0 200		<b>ARC BHCORR Phase-Shift Resistivity 40-in. at 2 MHz, Real-Time (P40H_RT) (OHMM)</b> 0.2 200	

<b>PIP SUMMARY</b>			
└ Gamma Ray Samples		Delta-T Samples ┐	
┐ Resistivity Samples		Neutron Samples ┐	

**IDEAL Version: ID13\_0C\_11**  
IDF