

Bazzard-1 200MD RT Log

IDF

Format: Bazzard_1 ARCSOINIC RT Log

Vertical Scale: 1:200

Graphics File Created: 28-Sep-2008 06:05

Parameters

DLIS Name	Description	Value
DO	Depth Offset	0.0 m

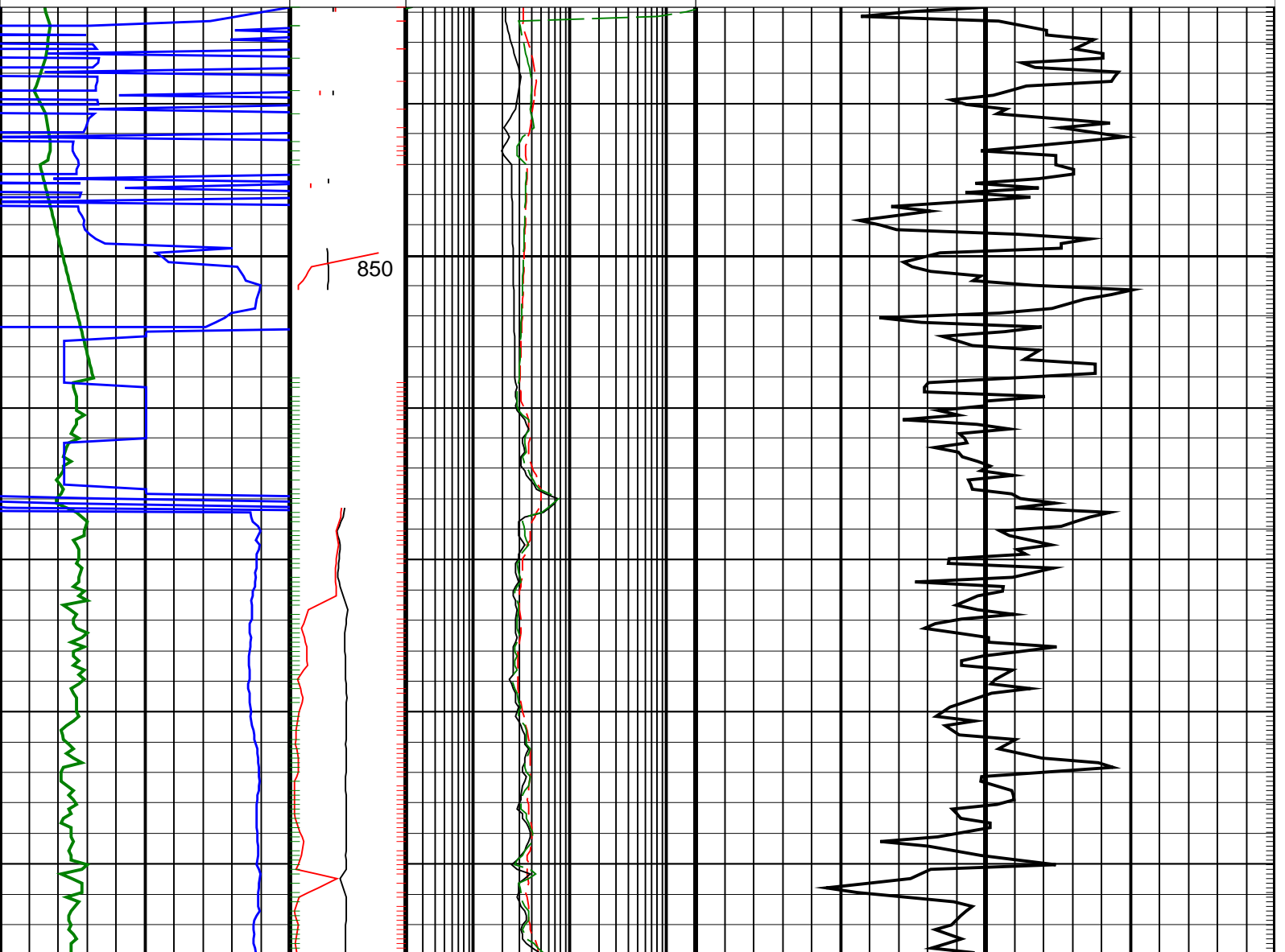
PIP SUMMARY

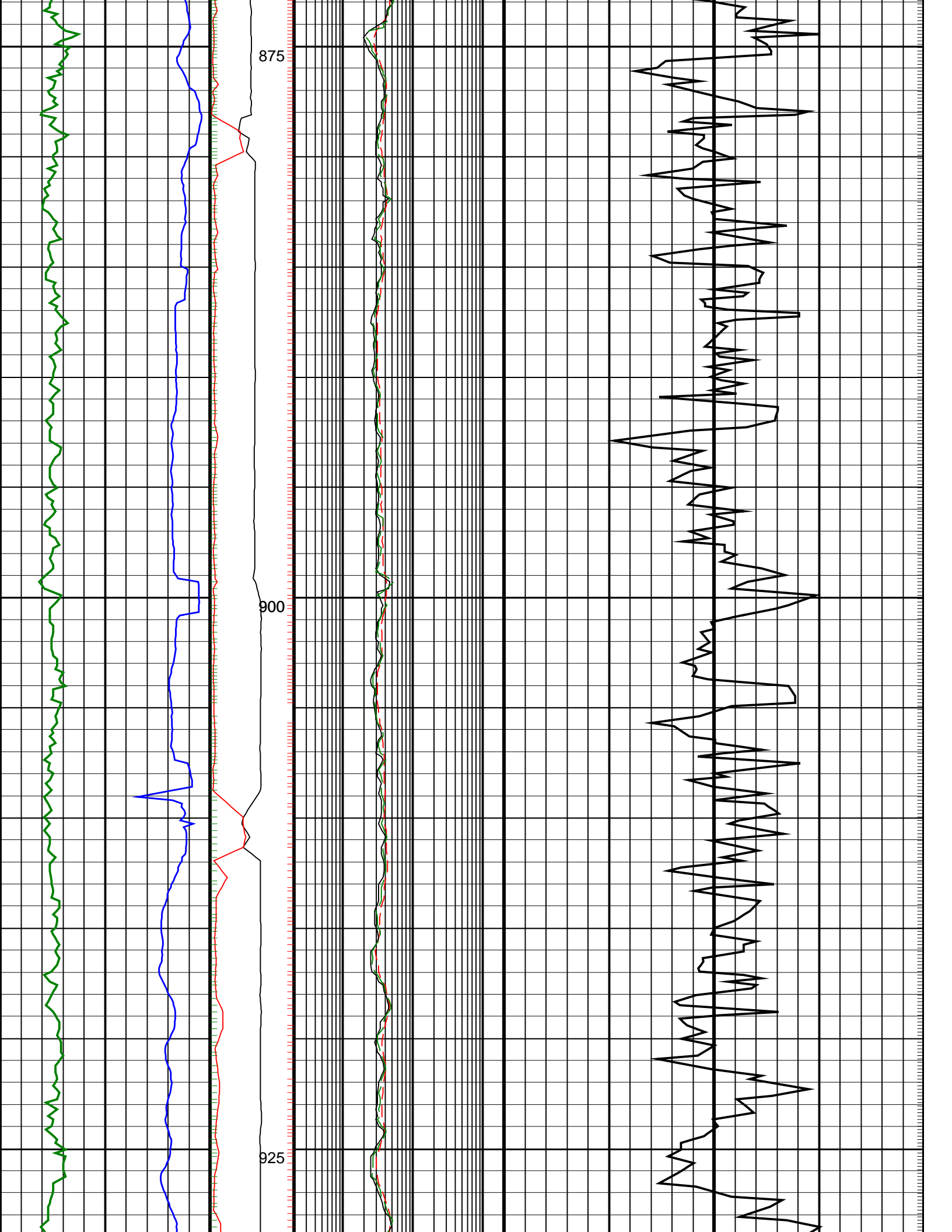
┆ Gamma Ray Samples

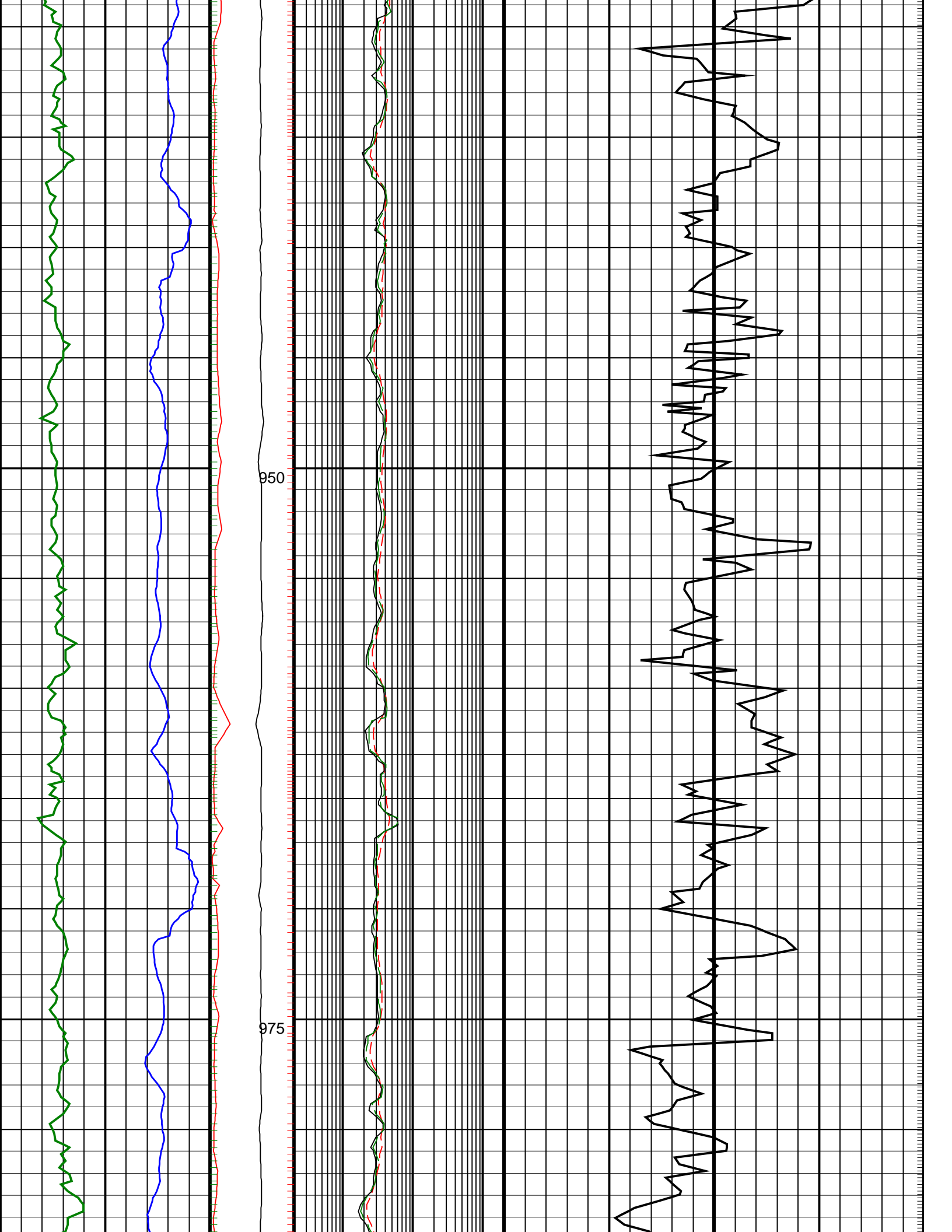
Delta-T Samples ┆

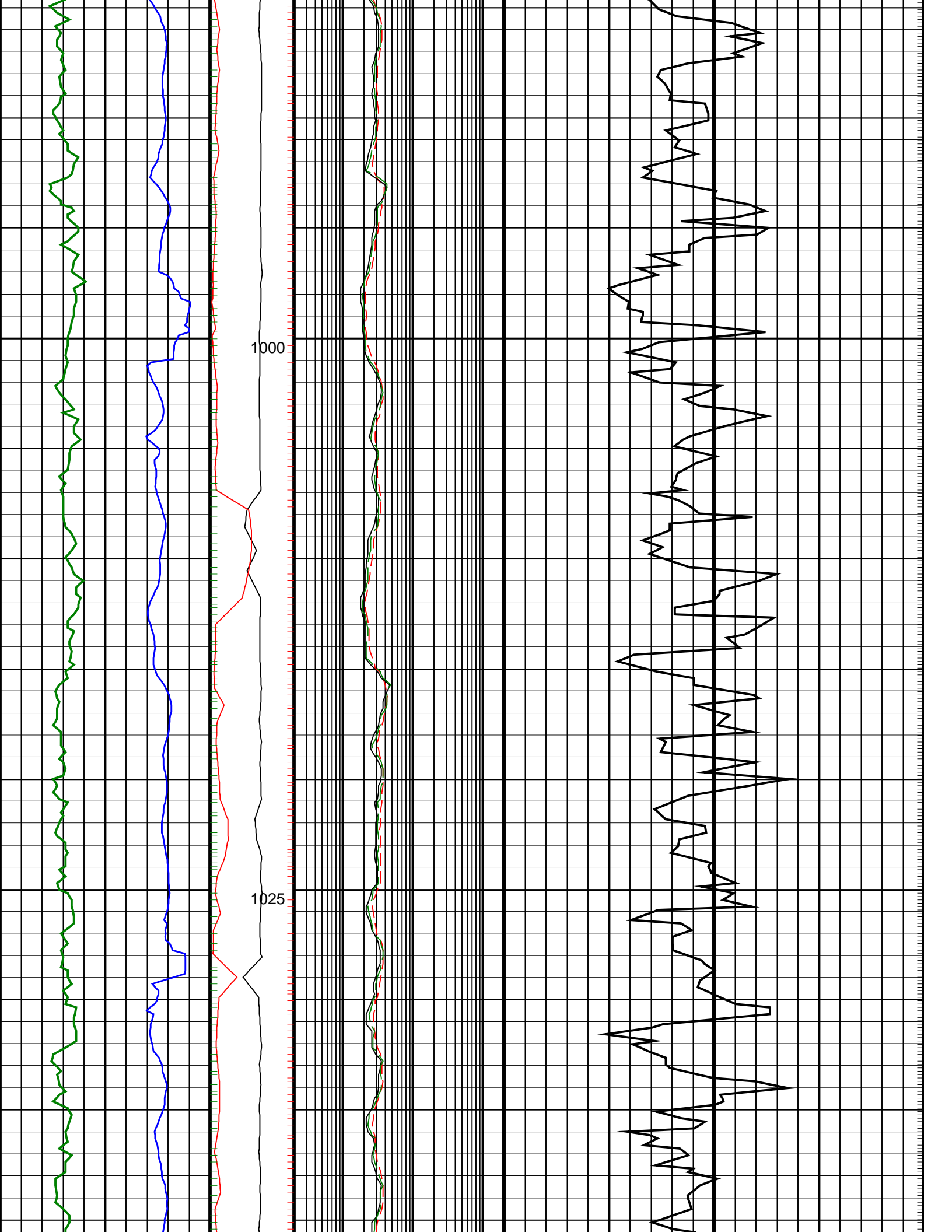
┆ Resistivity Samples

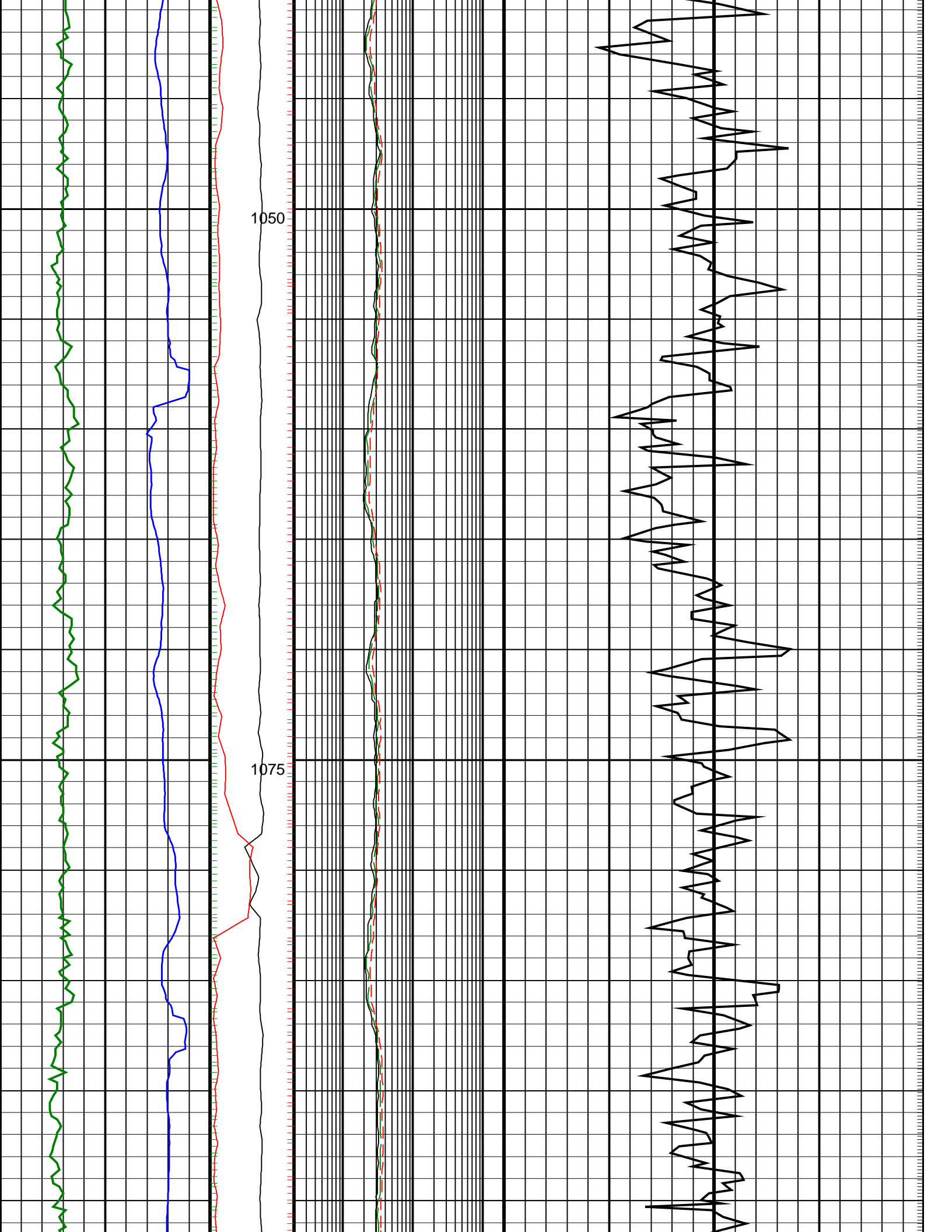
		ARC BHCorr Phase-Shift Resistivity 40-in. at 2 MHz, Real-Time (P40H_RT) 0.2 (OHMM) 200	
ARC Gamma Ray, Real-Time (ARC_GR_RT) 0 (GAPI) 200	MWD Collar RPM (CRPM_RT) (RPM) 0 250	ARC BHCorr Phase-Shift Resistivity 16-in. at 2 MHz, Real-Time (P16H_RT) 0.2 (OHMM) 200	
ROP*5 (ROP5) (M/HR) 200 0	PKPK_RPM (Stick_RT) (RPM) 0 500	ARC BHCorr Attenuation Resistivity 40-in. at 2 MHz, Real-Time (A40H_RT) 0.2 (OHMM) 200	Delta-T Compressional, Real-Time (DTCO_RT) 140 (US/F) 40

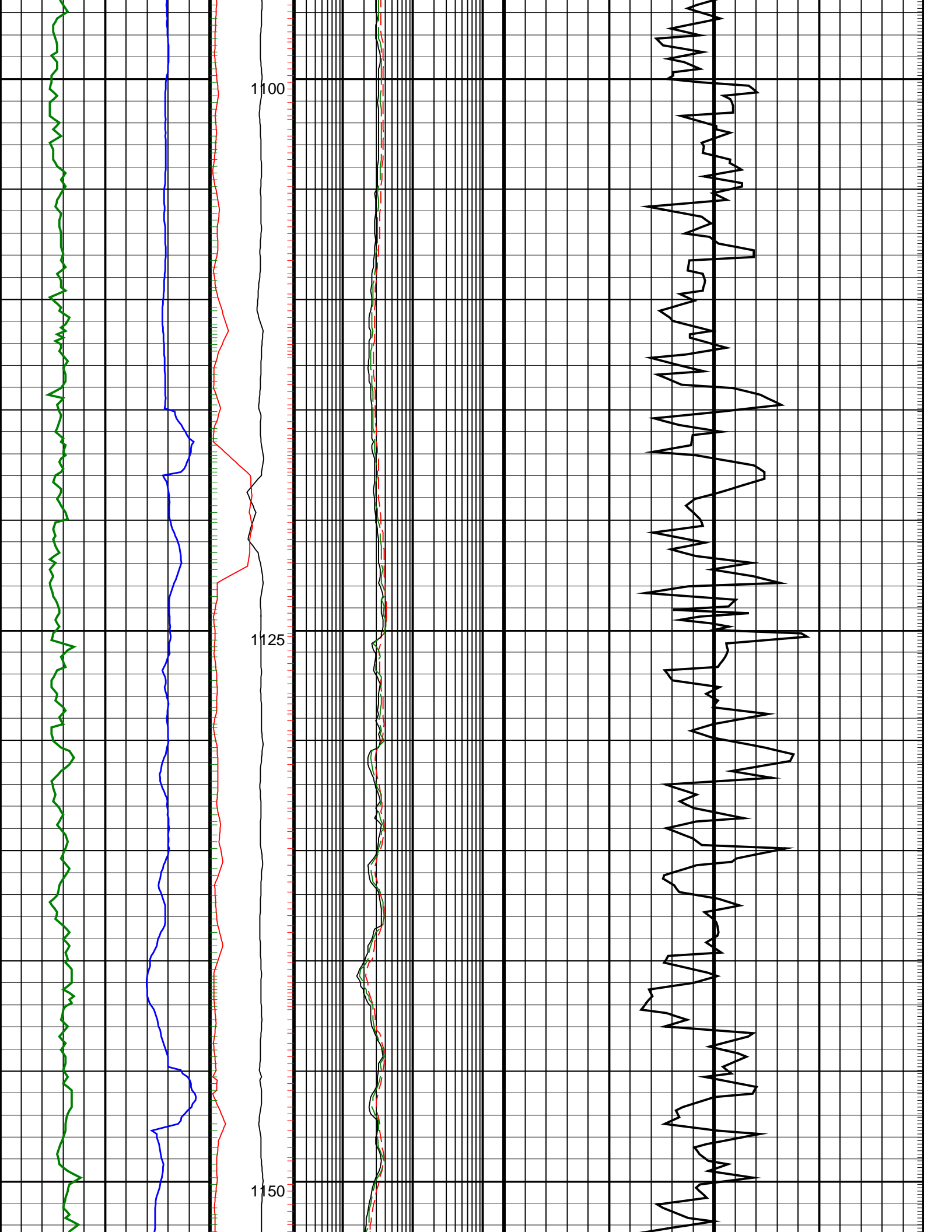


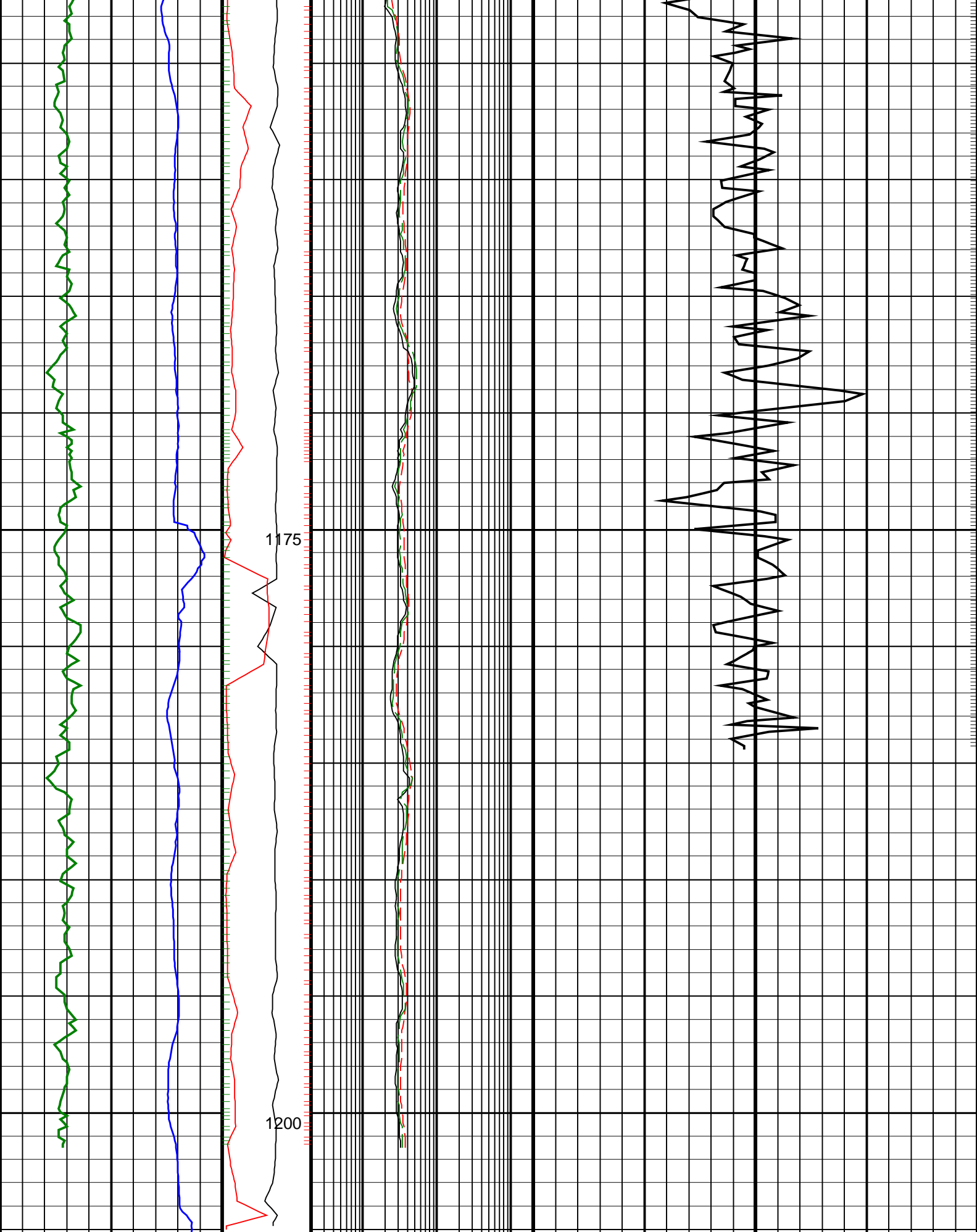












ROP*5 (ROP5)
(M/HR)

200 0

PKPK_RPM
(Stick_RT)
(RPM)

0 500

ARC BHCorr Attenuation
Resistivity 40-in. at 2 MHz,
Real-Time (A40H_RT)
(OHMM)

0.2 200

Delta-T Compressional, Real-Time (DTCO_RT)
(US/F)

140 40

ARC Gamma Ray, Real-Time (ARC_GR_RT) 0 (GAPI) 200	MWD Collar RPM (CRPM_RT) (RPM) 0 250	ARC BHCorr Phase-Shift Resistivity 16-in. at 2 MHz, Real-Time (P16H_RT) 0.2 (OHMM) 200	
		ARC BHCorr Phase-Shift Resistivity 40-in. at 2 MHz, Real-Time (P40H_RT) 0.2 (OHMM) 200	

PIP SUMMARY

└ Gamma Ray Samples

Delta-T Samples ┘

└ Resistivity Samples

IDEAL Version: ID13_0C_11
IDF