



Company : Stuart Petroleum Ltd

Well : Bazzard-1

Interval : 49.00 - 882.71 meters

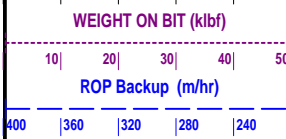
Created : 26/Sep/2008 6:39:53 AM



INTEQ

FORMATION EVALUATION LOG

Drilling Rate ROP (m/hr)		CORE	MD meters 1:500	LITHOLOGY %	INTERPRETED LITHOLOGY	TOTAL GAS & RESISTIVITY	CHROMATOGRAPH	Oil Show P F G	Calcmetry	Lithology Description
200	160									



			50							
			60							
			70							
			80							
			90							
			100							
			110							
			120							
			130							
			140							
			1							

NB1: 660mm (26")
 914mm (36") H/Opener
 Make: Reed
 Type: Rock/Y11C
 Jets: 3x22, 1x16
 Depth In: 106.4m
 Depth Out: 154.0m
 Grade: 1-1-WT-A-NB-I-NO-1D

WOB: 1-3 klbf
 RPM: 60-80
 GPM: 600-1140
 SPP: 250-1150 psi

RT-MSL: 38.54 mMDRT
 Water Depth: 68.0 mMDRT
 RT-Seabed: 106.54 mMDRT

Spud Bazzard-1 @ 2330 hrs
 on 20/09/08

Drill with seawater & Hi-Vis sweeps.
 Returns to seabed 106.4m - 850.0m

Set 762mm (30") casing shoe at 151.0m

21-22/09/08

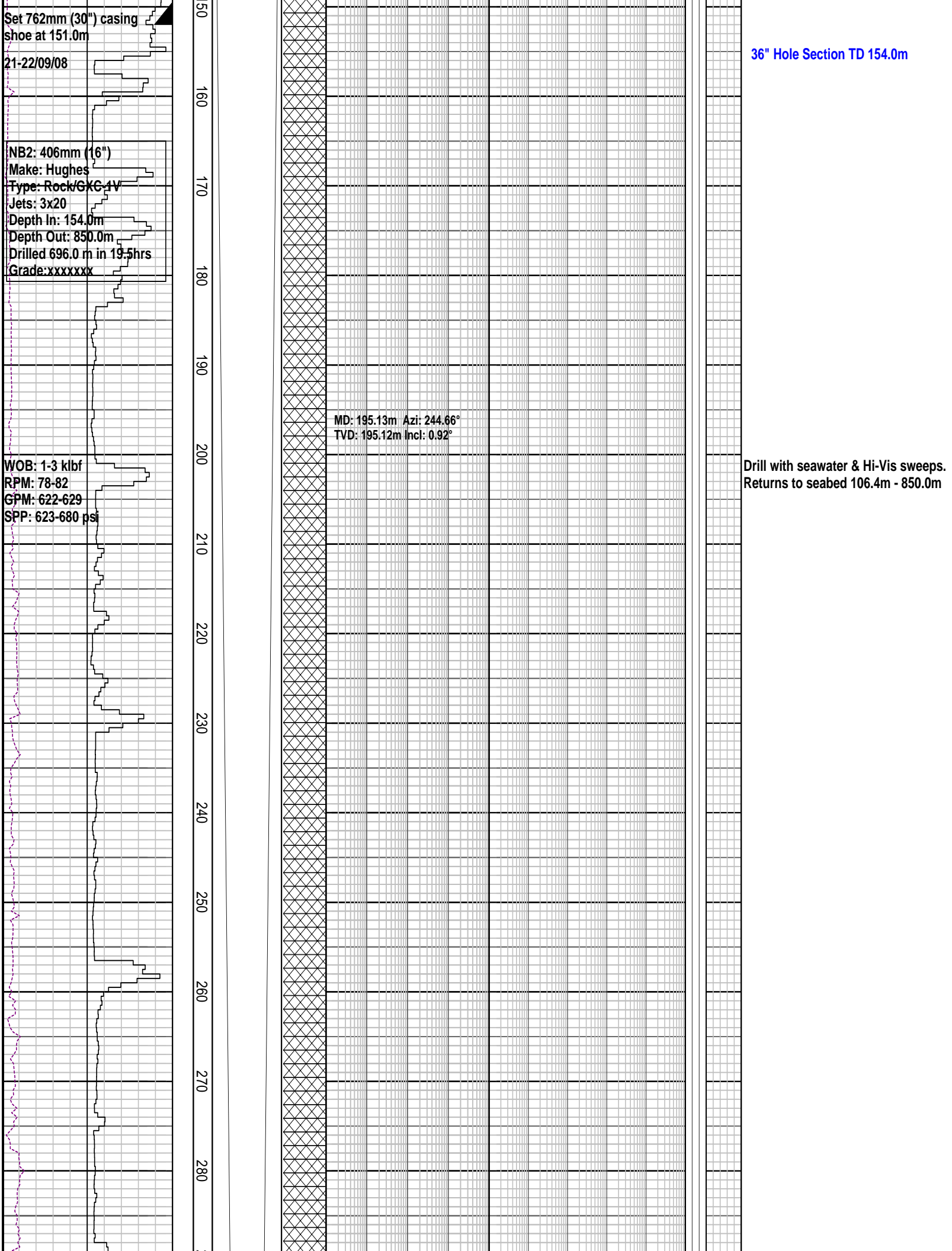
NB2: 406mm (16")
Make: Hughes
Type: Rock/GKG-1V
Jets: 3x20
Depth In: 154.0m
Depth Out: 850.0m
Drilled 696.0 m in 19.5hrs
Grade:xxxxxx

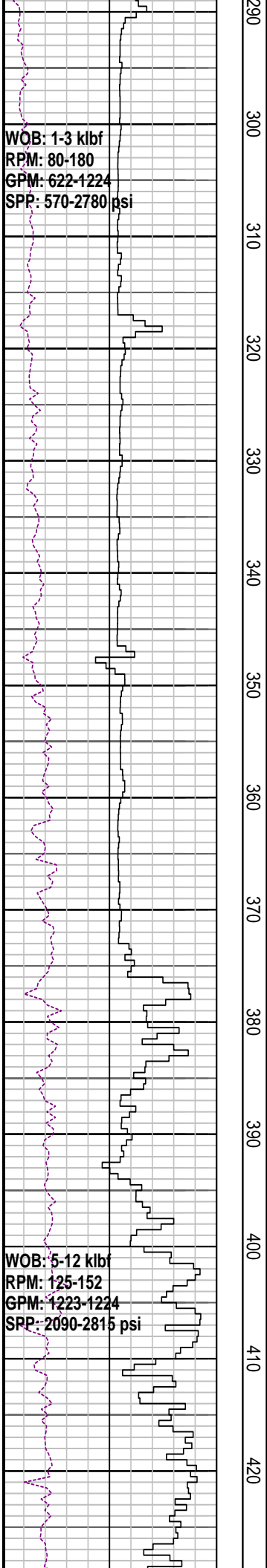
WOB: 1-3 klf
RPM: 78-82
GPM: 622-629
SPP: 623-680 psi

MD: 195.13m Azi: 244.66°
TVD: 195.12m Incl: 0.92°

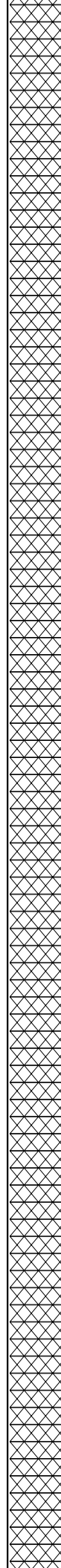
36" Hole Section TD 154.0m

Drill with seawater & Hi-Vis sweeps.
Returns to seabed 106.4m - 850.0m





290
300
310
320
330
340
350
360
370
380
390
400
410
420



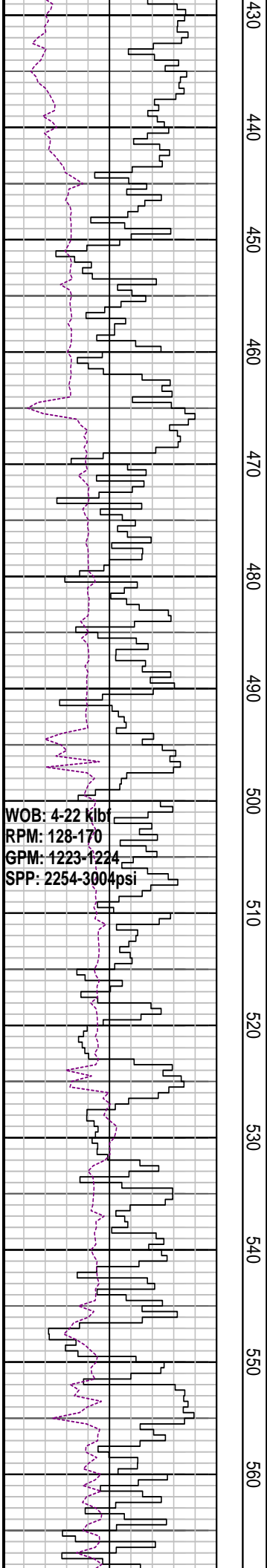
MD: 341.42m Azi: 323.79°
TVD: 341.40m Incl: 0.03°

MD: 370.87m Azi: 246.56°
TVD: 370.85m Incl: 0.36°

MD: 399.83m Azi: 249.03°
TVD: 399.81m Incl: 0.45°

Drill with seawater & Hi-Vis sweeps.
Returns to seabed 106.4m - 850.0m

Drill with seawater & Hi-Vis sweeps.
Returns to seabed 106.4m - 850.0m



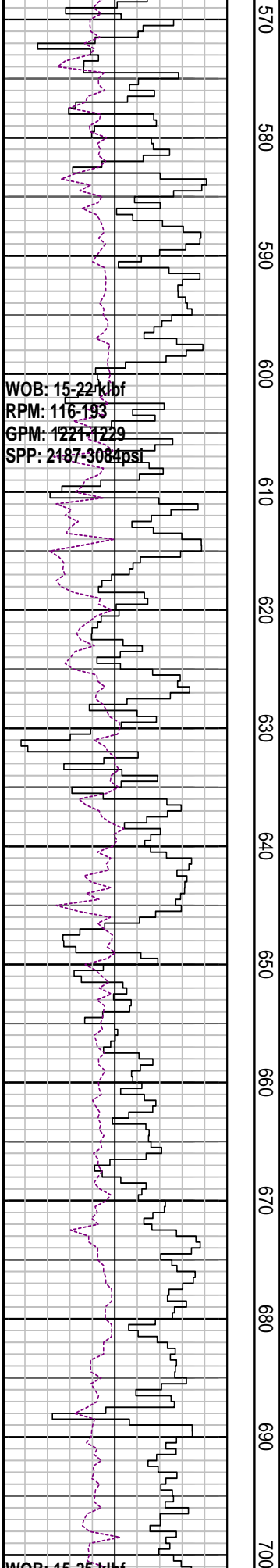
430
440
450
460
470
480
490
500
510
520
530
540
550
560

MD: 458.61m Azi: 256.36°
TVD: 458.59m Incl: 0.26°

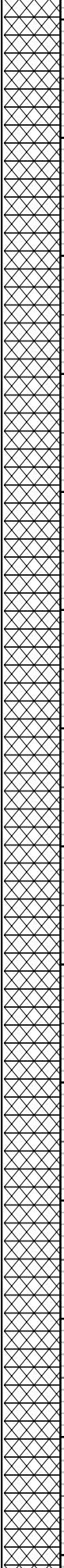
MD: 488.50m Azi: 298.03°
TVD: 488.48m Incl: 0.55°

MD: 518.24m Azi: 302.41°
TVD: 518.22m Incl: 0.60°

Drill with seawater & Hi-Vis sweeps.
Returns to seabed 106.4m - 850.0m



570
580
590
600
610
620
630
640
650
660
670
680
690
700



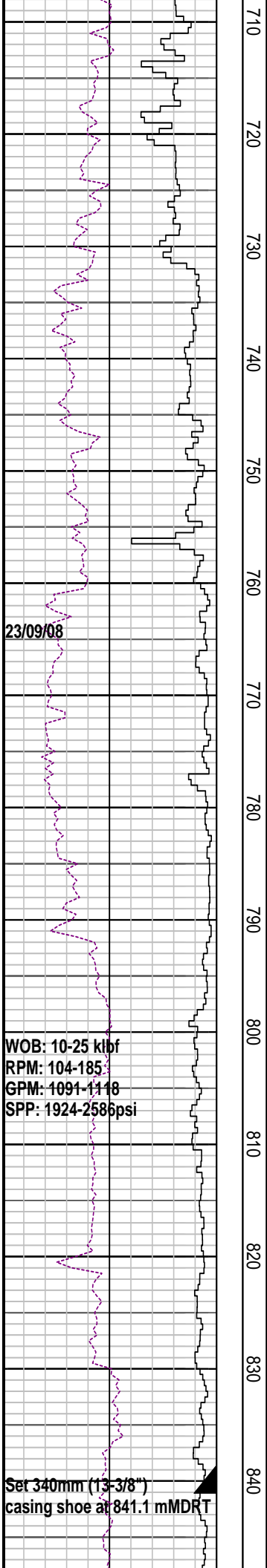
MD: 607.51m Azi: 265.06°
TVD: 607.48m Incl: 0.34°

MD: 634.48m Azi: 227.13°
TVD: 634.45m Incl: 0.12°

MD: 698.14m Azi: 181.9°
TVD: 698.11m Incl: 0.30°

Drill with seawater & Hi-Vis sweeps.
Returns to seabed 106.4m - 850.0m

Drill with seawater & Hi-Vis sweeps.
Returns to seabed 106.4m - 850.0m



710
720
730
740
750
760
770
780
790
800
810
820
830
840

MD: 725.93m Azi: 188.82°
TVD: 725.90m Incl: 1.97°

MD: 755.72m Azi: 175.57°
TVD: 755.76m Incl: 2.82°

MD: 785.01m Azi: 168.12°
TVD: 784.94m Incl: 0.33°

MD: 814.35m Azi: 171.73°
TVD: 814.28m Incl: 0.20°

WOB: 10-25 klpf
RPM: 104-185
GPM: 1091-1118
SPP: 1924-2586psi

Set 340mm (13-3/8") casing shoe at 841.1 mMDRT

Drill with seawater & Hi-Vis sweeps.
Returns to seabed 106.4m - 850.0m

