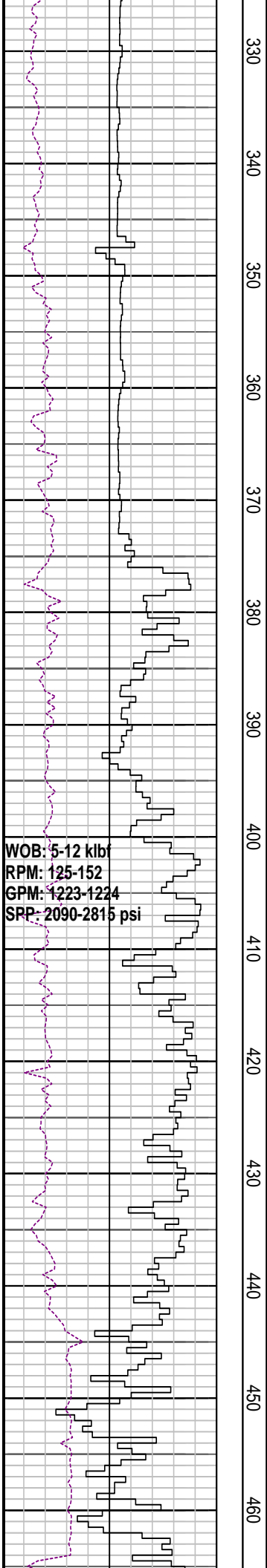


190  
200  
210  
220  
230  
240  
250  
260  
270  
280  
290  
300  
310  
320

MD: 195.13m Azi: 244.66°  
TVD: 195.12m Incl: 0.92°

Drill with seawater & Hi-Vis sweeps.  
Returns to seabed 106.4m - 850.0m

Drill with seawater & Hi-Vis sweeps.  
Returns to seabed 106.4m - 850.0m



330  
340  
350  
360  
370  
380  
390  
400  
410  
420  
430  
440  
450  
460

MD: 341.42m Azi: 323.79°  
TVD: 341.40m Incl: 0.03°

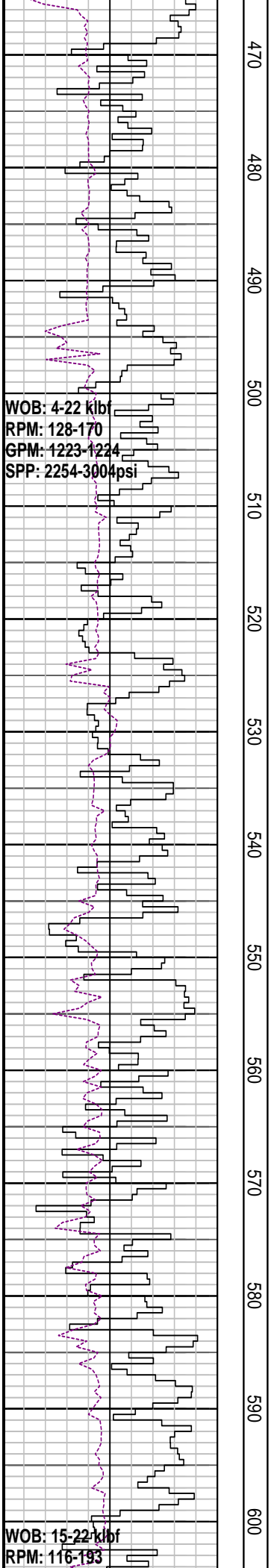
MD: 370.87m Azi: 246.56°  
TVD: 370.85m Incl: 0.36°

MD: 399.83m Azi: 249.03°  
TVD: 399.81m Incl: 0.45°

MD: 456.61m Azi: 256.36°  
TVD: 458.59m Incl: 0.26°

WOB: 5-12 klbf  
RPM: 125-152  
GPM: 1223-1224  
SPP: 2090-2815 psi

Drill with seawater & Hi-Vis sweeps.  
Returns to seabed 106.4m - 850.0m



470  
480  
490  
500  
510  
520  
530  
540  
550  
560  
570  
580  
590  
600

MD: 488.50m Azi: 298.03°  
TVD: 488.48m Incl: 0.55°

MD: 518.24m Azi: 302.41°  
TVD: 518.22m Incl: 0.60°

Drill with seawater & Hi-Vis sweeps.  
Returns to seabed 106.4m - 850.0m

Drill with seawater & Hi-Vis sweeps.  
Returns to seabed 106.4m - 850.0m

GPM: 1221-1229  
SPP: 2487-3084psi

WOB: 15-25 klf  
RPM: 113-185  
GPM: 1112-1228  
SPP: 2226-2894psi

610  
620  
630  
640  
650  
660  
670  
680  
690  
700  
710  
720  
730  
740

MD: 607.51m Azi: 265.06°  
TVD: 607.48m Incl: 0.34°

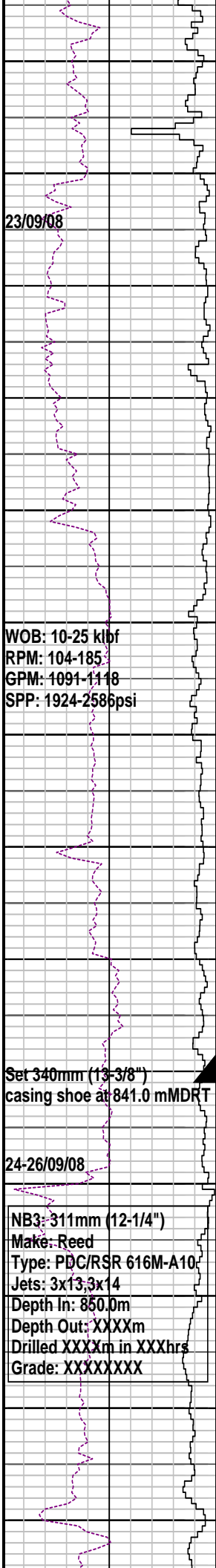
MD: 634.48m Azi: 227.13°  
TVD: 634.45m Incl: 0.12°

MD: 698.14m Azi: 181.9°  
TVD: 698.11m Incl: 0.30°

MD: 725.93m Azi: 188.82°  
TVD: 725.90m Incl: 1.97°

Drill with seawater & Hi-Vis sweeps.  
Returns to seabed 106.4m - 850.0m





750  
760  
770  
780  
790  
800  
810  
820  
830  
840  
850  
860  
870  
880

MD: 755.72m Azi: 175.57°  
 TVD: 755.76m Incl: 2.82°

MD: 785.01m Azi: 168.12°  
 TVD: 784.94m Incl: 0.33°

MD: 814.35m Azi: 171.73°  
 TVD: 814.28m Incl: 0.20°

MD: 866.19m Azi: 140.35°  
 TVD: 866.2m Incl: 0.23°

Drill with seawater & Hi-Vis sweeps.  
 Returns to seabed 106.4m - 850.0m

16" Hole Section TD 850.0m

Drill with KCl/PHPA mud  
 850.0m to Well TD

MW: 8.7 ppg      FV:  
 153  
 PV: 24              YP:40  
 Gels: 10/12/12      pH: 9.0

LOT @ 853.0m with 8.8 ppg  
 EMW: 15.06 ppg @ 900 psi

CALCULITITE lt bl gy, mod sft, ang f  
 gr slit par, wl srt, wk calc cmt, Ls md  
 mtrx, p vis por

CALCARENITE: yel gy-lt olv gy,  
 sbrndd blk, mod hd, f gr, trnsl sb ang  
 cal

WOB: 5-25 klb  
RPM: 70-142  
GPM: 840-1110  
SPP: 1675-2470psi

WOB: 15-25 klb  
RPM: 107-185  
GPM: 1000-1110  
SPP: 2135-2450psi

890  
900  
910  
920  
930  
940  
950  
960  
970  
980  
990  
1000  
1010  
1020

MD: 926.91m Azi: 152.99°  
TVD: 926.9m Incl: 0.14°

MD: 1015.91m Azi: 23.8°  
TVD: 1015.9m Incl: 0.11°

CALCULITITE : lt bl gy, mod sft, ang f  
gr slt par, wl srt, wk calc cmt, Ls md  
mtrx, p vis por

CALCARENITE : yel gy-lt olv gy,  
sbrndd blk, mod hd, f gr, trnsl sb ang

CALCULITITE lt bl gy, mod sft, ang f  
gr slt par, wl srt, wk calc cmt, Ls md  
mtrx, p vis por

CALCULITITE lt bl gy, mod sft, ang f  
gr slt par, wl srt, wk calc cmt, Ls md  
mtrx, p vis por

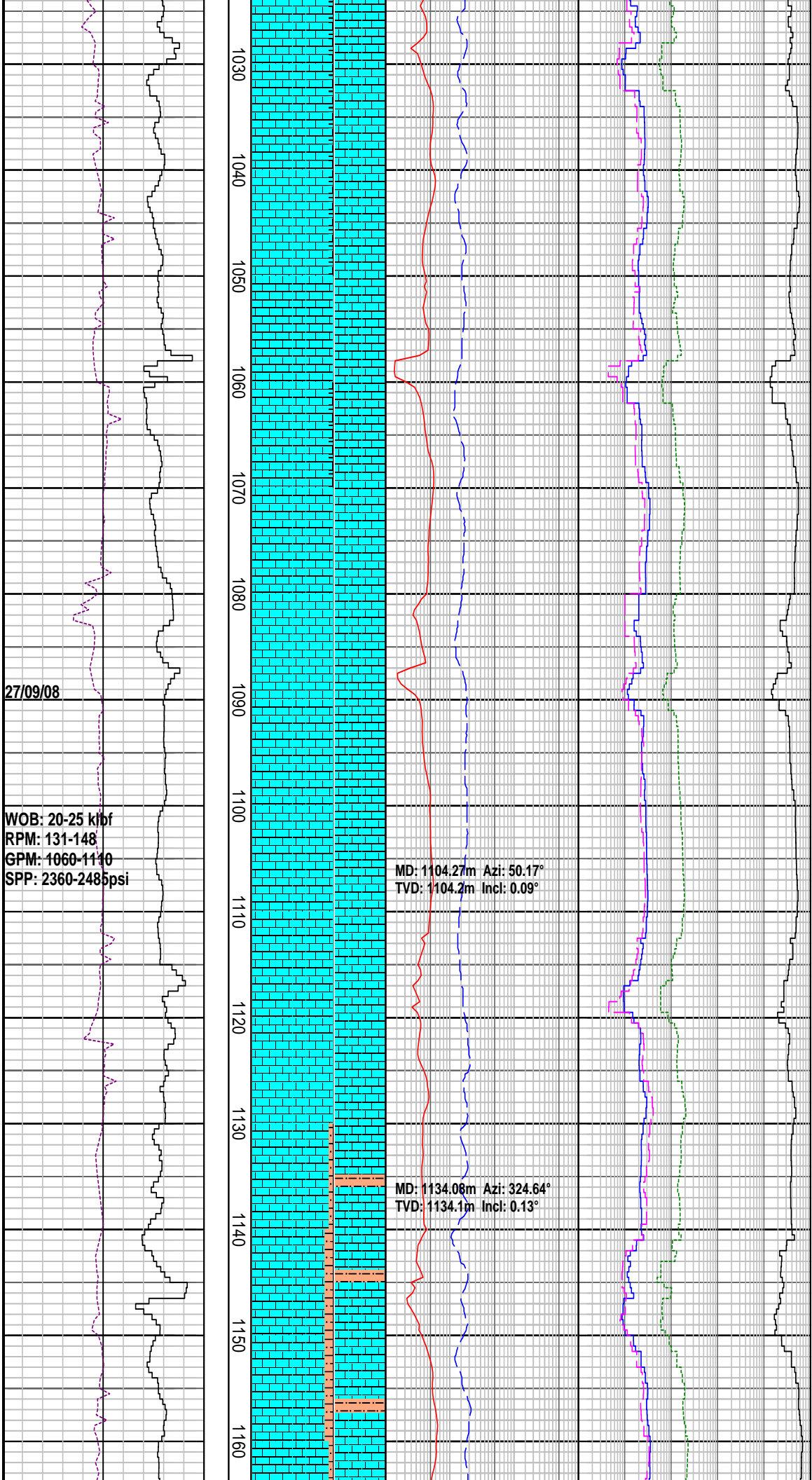
CALCULITITE lt bl gy, mod sft, ang f  
gr slt par, wl srt, wk calc cmt, Ls md  
mtrx, p vis por

CALCARENITE : yel gy-lt olv gy,  
sbrndd blk, mod hd, f gr, trnsl sb ang  
calc, calc cmt

CALCULITITE lt bl gy, mod sft, ang f  
gr slt par, wl srt, wk calc cmt, Ls md  
mtrx, p vis por

MW: 8.8 ppg	FV: 70
PV: 16	YP: 36
Gels: 13/20/23	pH: 8.5

CALCARENITE



CALCARENITE : yel gy-it olv gy, sbrndd blk, mod hd, f gr, trnsl sb ang

CALCULITITE It bl gy, mod sft, ang f gr slt par, wl srt, wk calc cmt, Ls md mtrx, p vis por

CALCULITITE It bl gy, mod sft, ang f gr slt par, wl srt, wk calc cmt, Ls md mtrx, p vis por

CALCULITITE It bl gy-olv gy, sft-mod sft, blk, ang f gr slt par, calc cmt, comm cal slt, lam slty

CALCARENITE : It olv gy-med gy, sbrndd blk, mod hd, f gr, mod srt, trnsl sb ang

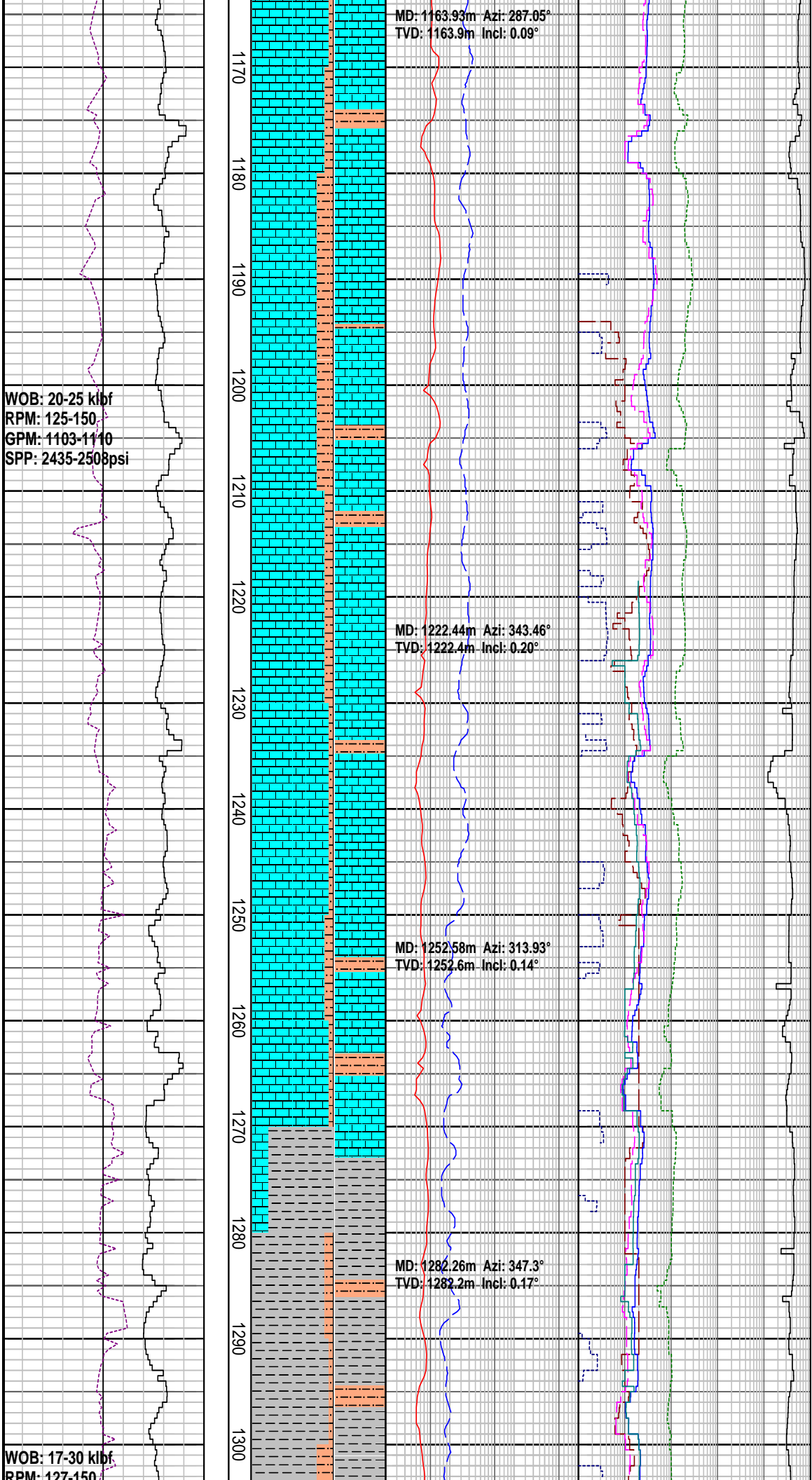
CALCULITITE It bl gy-olv gy, sft-mod sft, mod hd, frm i/p, sbbkly-blky, silty md, wl srt, comm cal slt, lam, pr inf por

CALCULITITE It bl gy-olv gy, sft-mod sft, mod hd, frm i/p, sbbkly-blky, silty md, wl srt, comm cal slt, lam, pr inf por, tr SLTST

SILTSTONE: It brn-dk brn, frm-mod hd, blk, mod calc

CALCULITITE It bl gy-olv gy, sft-mod sft, mod hd, frm i/p, sbbkly-blky, silty





md, wll srt, comm calcs slt, lam, pr inf por

SILTSTONE: lt brn-dk brn, frm-mod hd, blkly, mod calc

CALCULITITE lt bl gy-olv gy, sft-mod sft, mod hd, frm i/p, sbblky-blky, silty md, wll srt, comm calcs slt, comm lam, pr inf por

SILTSTONE: lt brn-dk brn, frm-mod hd, blkly, mod calc

CALCULITITE lt bl gy-olv gy, sft-mod sft, mod hd, frm i/p, sbblky-blky, silty md, wll srt, comm calcs slt, comm lam, pr inf por

CALCULITITE: lt gy-med gy, lt bl gy-olv gy, sft-mod sft, amorp, frm i/p, sbblky-blky, disp i/p, silty md, wll srt, comm lam, pr inf por

SILTSTONE: med gy-grnsh gy, frm-hd, blkly, arg mod calc, tr dk gr-blk vf-med sbrndd glau

CALCAREOUS CLAYSTONE: dk gy-olv gy, sft-mod frm, sbblky-blky, sli silty, mod-hi calc, tr mic flks

SILTSTONE: med gy-grnsh gy, frm-hd, blkly, arg mod calc

RPM: 127-150  
GPM: 1097-1113  
SPP: 2500-2581psi

WOB: 21-30 klf  
RPM: 145-161  
GPM: 1098-1099  
SPP: 2490-2635psi

1310  
1320  
1330  
1340  
1350  
1360  
1370  
1380  
1390  
1400  
1410  
1420  
1430  
1440

MD: 1310.49m Azi: 334.37°  
TVD: 1310.47m Incl: 0.32°

MD: 1369.93m Azi: 330.01°  
TVD: 1369.9m Incl: 0.26°

BG 0.38% (1270m-1370m)  
100/0/0/0

MD: 1429.33m Azi: 320.61°  
TVD: 1429.3m Incl: 0.41°

BG 0.37% (1370m-1430)  
99/0/1/0/0

CALCAREOUS CLAYSTONE: dk gy-dk  
olv gy, sft-mod frm, sbbkly-blky, sli  
silty, mod-hi calc, tr mic flks, grdg to  
ClcIt

CALCAREOUS CLAYSTONE: dk gy-dk  
olv gy, sft-mod frm, sbbkly-blky, sli  
silty, mod-hi calc, tr mic flks, grdg to  
ClcIt

SILTSTONE: med gy-gn gy, frm-hd,  
blky, arg mod calc

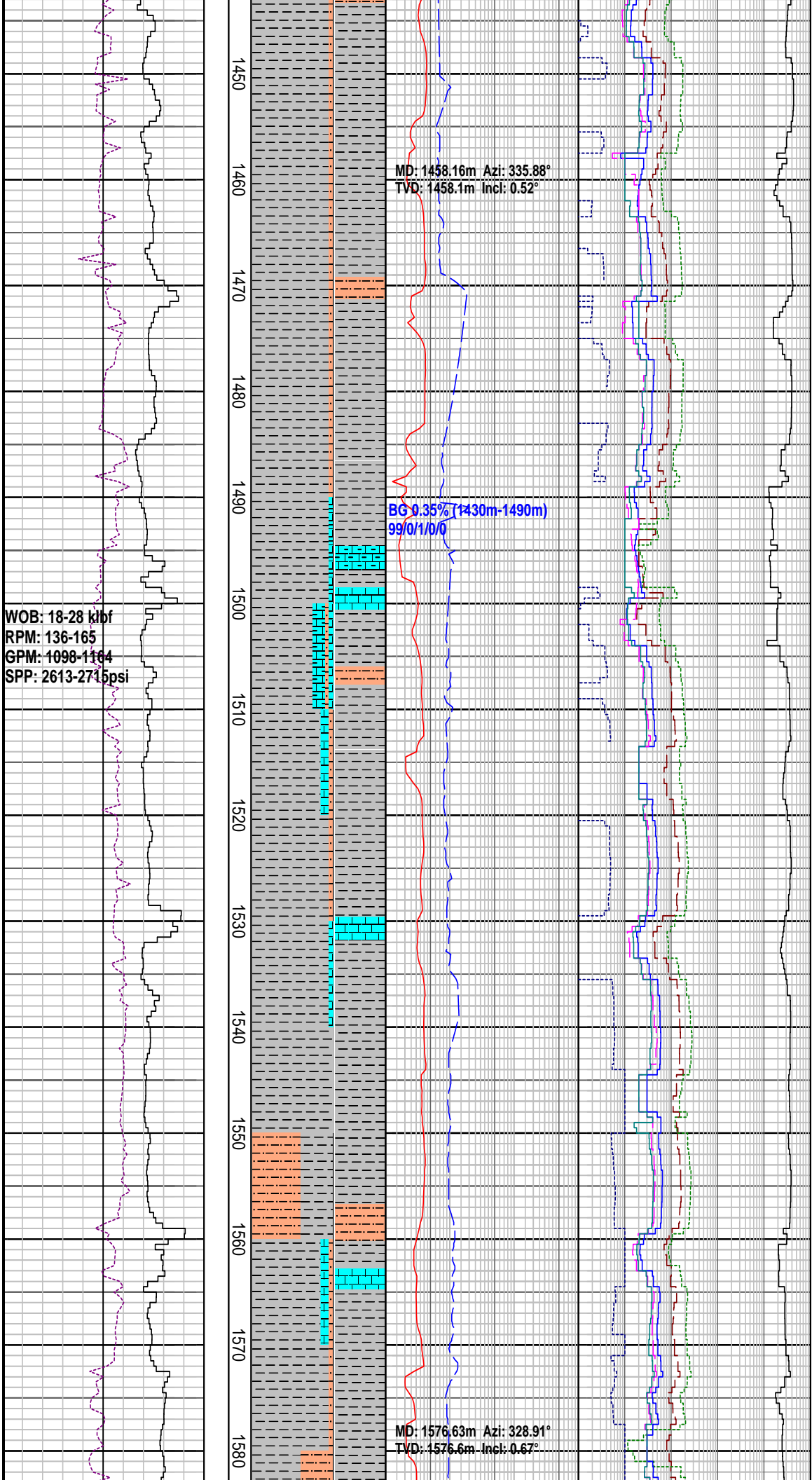
CALCAREOUS CLAYSTONE: dk gy-dk  
olv gy, sft-mod frm, sbbkly-blky, sli  
silty, mod-hi calc, tr mic flks, grdg to  
ClcIt

LIMESTONE: clr hd xln cal wh-gy sft  
amor LS

CALCAREOUS CLAYSTONE: dk gy-dk  
olv gy, sft-mod frm, sbbkly-blky, sli  
silty, mod-hi calc, tr mic flks, grdg to  
ClcIt

LIME STONE : dk gy, mod hd Ls, tr sh  
frag

LIME STONE : dk gy, mod hd Ls, tr sh  
frag



WOB: 18-28 kbf  
 RPM: 136-165  
 GPM: 1098-1164  
 SPP: 2613-2715psi

MD: 1458.16m Azi: 335.88°  
 TVD: 1458.1m Incl: 0.52°

BG 9.35% (1430m-1490m)  
 99/0/1/0/0

MD: 1576.63m Azi: 328.91°  
 TVD: 1576.6m Incl: 0.67°

SILTSTONE: med gy-gn gy, frm-hd, blk, arg mod calc, tr blk carb lam

CALCAREOUS CLAYSTONE: dk gy-dk olv gy, sft-mod frm, sbblk-bkly, sli slty, mod-hi calc, tr mic flks, grdg to Clcit

CALCARENITE : yel gy-lt olv gy, sbrndd blk, mod hd, f gr, trnsl sb ang

LIME STONE : dk gy, mod hd Ls, tr sh frag

LIME STONE : gy yel, mod hd Ls, xln calc mnr wh sft amor Ls, tr shl frag

CALCAREOUS CLAYSTONE: dk gy-dk olv gy, sft-mod frm, sbblk-bkly, sli slty, mod-hi calc, tr mic flks, grdg to Clcit

SILTSTONE: med gy-gn gy, frm-hd, blk, arg mod calc, tr blk carb lam

MW: 9.0 ppg	FV: 53
PV: 19	YP: 32
Gels: 14/24/29	pH: 8.5

WOB: 21-28 klbf  
RPM: 78-177  
GPM: 701-1115  
SPP: 1501-2787psi

WOB: 22-27 klbf  
RPM: 136-179  
GPM: 987-1113  
SPP: 2475 -2879psi

1590  
1600  
1610  
1620  
1630  
1640  
1650  
1660  
1670  
1680  
1690  
1700  
1710  
1720

MD: 1635.30m Azi: 340.80°  
TVD: 1635.3m Incl: 0.88°

MD: 1694.48m Azi: 342.11°  
TVD: 1694.4m Incl: 1.02°

SILTSTONE: med gy-gn gy, frm-hd, blky, arg mod calc, tr blk carb lam

CALCAREOUS CLAYSTONE: dk gy-dk olv gy, sft-mod frm, sbbky-blky, sli slty, mod-hi calc, tr mic flks, grdg to Clcit

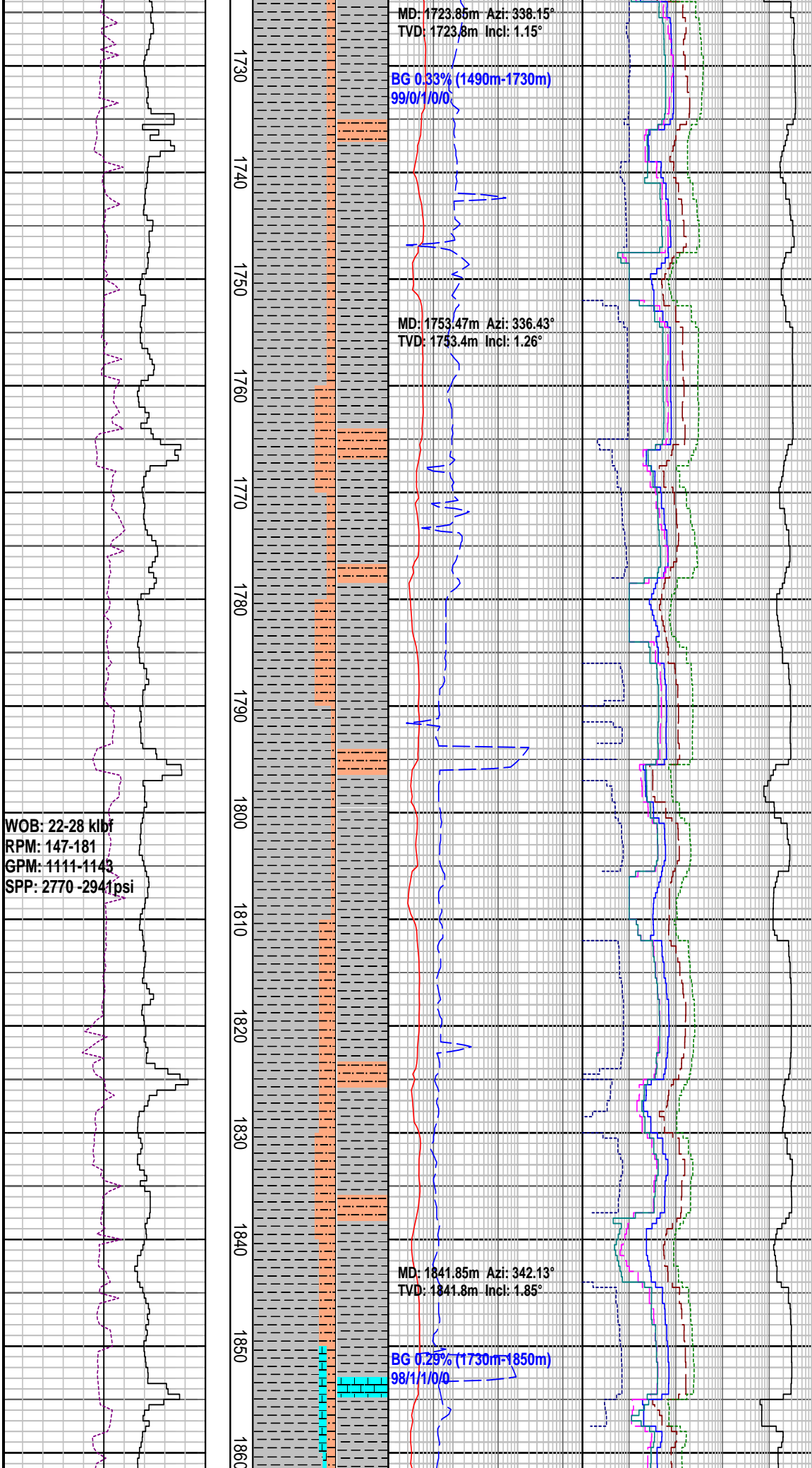
SILTSTONE: med gy-gn gy, frm-hd, blky, arg mod calc, tr blk carb lam

CALCARENITE : yel gy-lt olv gy, sbrndd blky, mod hd, f gr, trnsl sb ang

SILTSTONE: med gy-gn gy, frm-hd, blky, arg mod calc, tr blk carb lam

CALCAREOUS CLAYSTONE: dk gy-dk olv gy, sft-mod frm, sbbky-blky, sli slty, mod-hi calc, tr mic flks, grdg to Clcit

SILTSTONE: med gy-gn gy, frm-hd, blky, arg mod calc, tr blk carb lam



CALCAREOUS CLAYSTONE: dk gy-dk olv gy, sft-mod frm, sbblky-blky, sli slty, mod-hi calc

SILTSTONE: med gy-gn gy, frm-hd, blky, arg mod calc, tr blk carb lam, tr pyr

SILTSTONE: med gy-gn gy, frm-hd, blky, arg mod calc, tr blk carb lam, tr pyr

CALCAREOUS CLAYSTONE: dk gy-dk olv gy, sft-mod frm, sbblky-blky, sli slty, mod-hi calc, tr mic flks

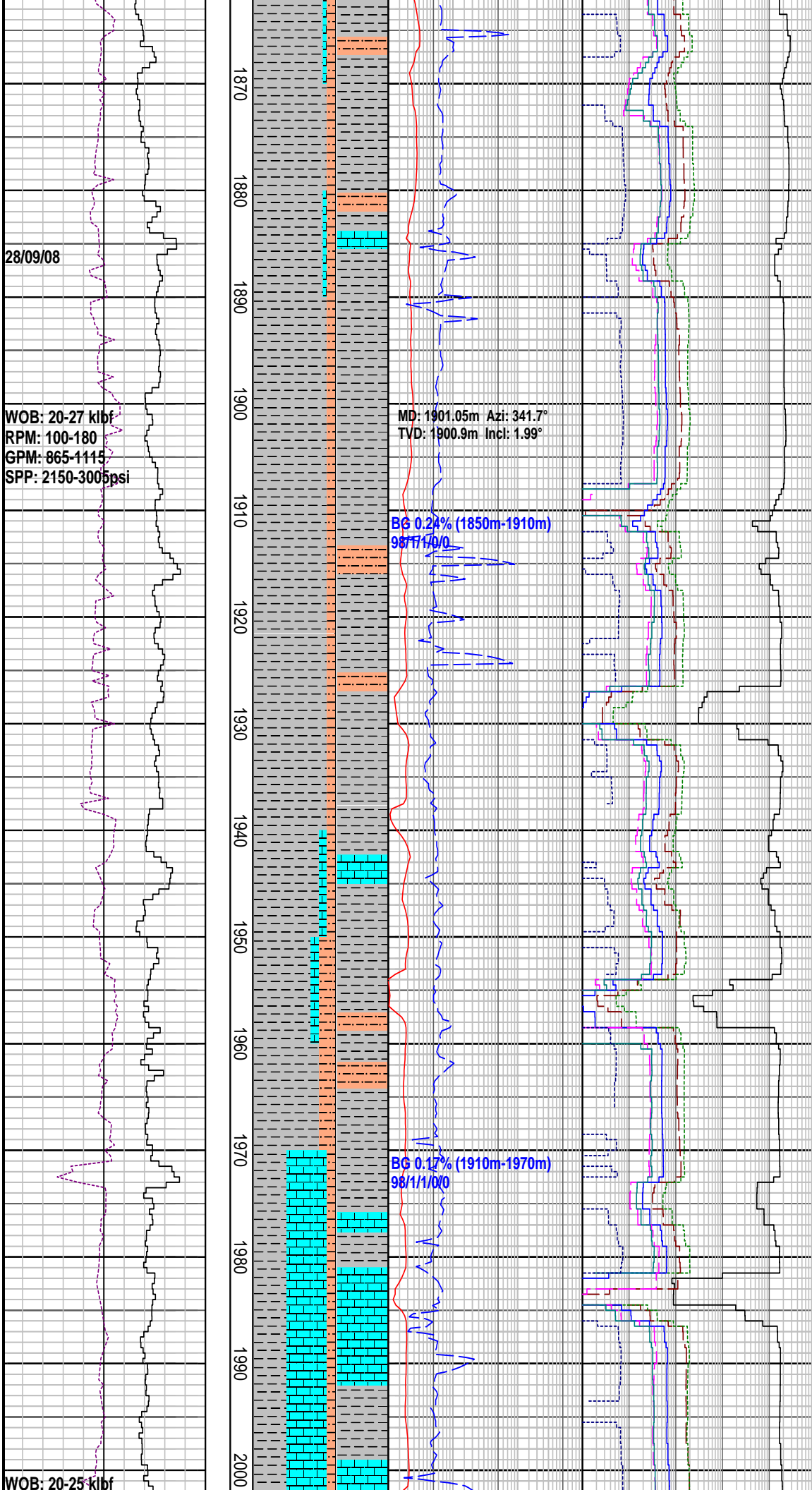
MW: 9.1 ppg	FV: 57
PV: 15	YP: 32
Gels: 13/22/26	pH: 8.5

SILTSTONE: med gy-gn gy, frm-hd, blky, arg mod calc, tr blk carb lam

SILTSTONE: med gy-gn gy, frm-hd, blky, arg mod calc, tr blk carb lam

CALCARENITE: med gy-gnsh gy, sbrndd blky, frm-mod hd, v f gr, sb ang, tr glau





**CALCAREOUS CLAYSTONE:** dk gy-dk olv gy, sft-mod frm, sbblky-blky, sli slty, mod-hi calc

**CALCARENITE:** wh lt gy-gnsh gy, blky, frm-mod hd, amor, f gr mod srt, opq sbang-sbrndd, tr f-med gr glau

**CALCAREOUS CLAYSTONE:** med lt gy-dk gy, gnsh gy, mod frm, sbblky-blky, tr mic, tr carb flks, mod-hi calc i/p, grdg to Clct

**SILTSTONE:** med gy-gn gy, frm-hd, blky, arg mod calc, tr blk carb lam

**CALCARENITE:** lt gy-med plv gy, gnsh gy, sbrndd blky, frm-mod hd, v f gr, sb ang, tr mic

**SILTSTONE:** med gy-gnsh gy, frm-hd, blky, arg mod-hi calc, tr blk carb lam, tr pyr

**CALCULITITE:** pl gy-med gy, gnsh gy, sft-frm, sbblky, comm cal Sit

**CLAYSTONE:** med lt gy-dk gy, gnsh gy, mod frm, sbblky-blky, tr mic, tr carb flks, mod-hi calc i/p, grdg to Clct

WOB: 20-27 kbf  
RPM: 100-180  
GPM: 865-1115  
SPP: 2150-3005psi

MD: 1901.05m Azi: 341.7°  
TVD: 1900.9m Incl: 1.99°

BG 0.24% (1850m-1910m)  
98/11/0/0

BG 0.17% (1910m-1970m)  
98/11/0/0

WOB: 20-25 kbf

