



Grade: 1-1-WT-A-4-INO-PR

WOB: 1-3 klb  
RPM: 78-82  
GPM: 622-629  
SPP: 623-680 psi

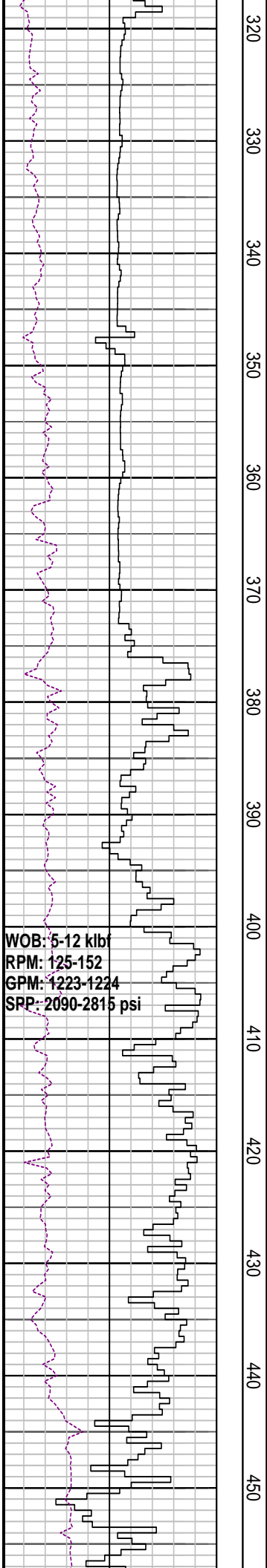
WOB: 1-3 klb  
RPM: 80-180  
GPM: 622-1224  
SPP: 570-2780 psi

180  
190  
200  
210  
220  
230  
240  
250  
260  
270  
280  
290  
300  
310

MD: 195.13m Azi: 244.66°  
TVD: 195.12m Incl: 0.92°

Drill with seawater & Hi-Vis sweeps.  
Returns to seabed 106.4m - 850.0m

Drill with seawater & Hi-Vis sweeps.  
Returns to seabed 106.4m - 850.0m



320  
330  
340  
350  
360  
370  
380  
390  
400  
410  
420  
430  
440  
450

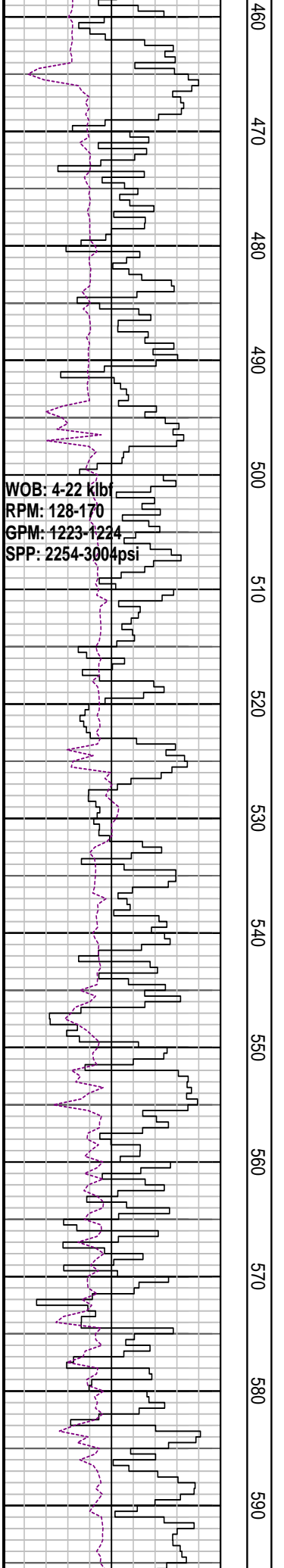
MD: 341.42m Azi: 323.79°  
TVD: 341.40m Incl: 0.03°

MD: 370.87m Azi: 246.56°  
TVD: 370.85m Incl: 0.36°

MD: 399.83m Azi: 249.03°  
TVD: 399.81m Incl: 0.45°

WOB: 5-12 klb  
RPM: 125-152  
GPM: 1223-1224  
SPP: 2090-2815 psi

Drill with seawater & Hi-Vis sweeps.  
Returns to seabed 106.4m - 850.0m



WOB: 4-22 klf  
RPM: 128-170  
GPM: 1223-1224  
SPP: 2254-3004psi

460  
470  
480  
490  
500  
510  
520  
530  
540  
550  
560  
570  
580  
590

MD: 458.61m Azi: 256.30°  
TVD: 458.59m Incl: 0.26°

MD: 488.50m Azi: 298.03°  
TVD: 488.48m Incl: 0.55°

MD: 518.24m Azi: 302.41°  
TVD: 518.22m Incl: 0.60°

Drill with seawater & Hi-Vis sweeps.  
Returns to seabed 106.4m - 850.0m

WOB: 15-22 klbf  
RPM: 116-193  
GPM: 1221-1229  
SPP: 2487-3084psi

WOB: 15-25 klbf  
RPM: 113-185  
GPM: 1112-1228  
SPP: 2226-2894psi

600  
610  
620  
630  
640  
650  
660  
670  
680  
690  
700  
710  
720  
730

MD: 607.51m Azi: 265.06°  
TVD: 607.48m Incl: 0.34°

MD: 634.48m Azi: 227.13°  
TVD: 634.45m Incl: 0.12°

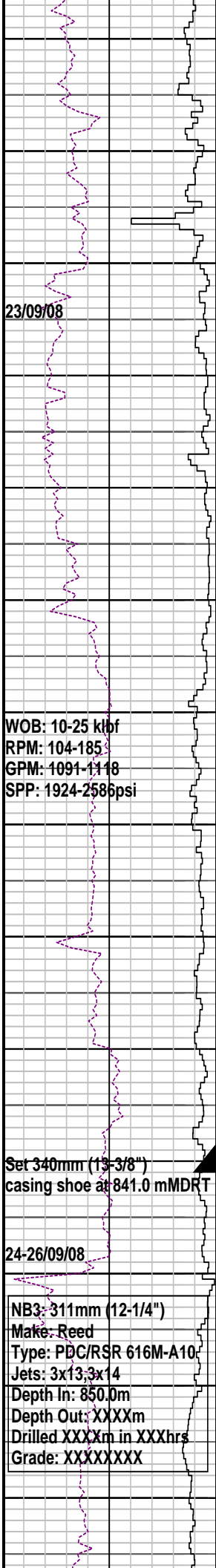
MD: 698.14m Azi: 181.9°  
TVD: 698.11m Incl: 0.30°

MD: 725.93m Azi: 188.82°  
TVD: 725.90m Incl: 1.97°

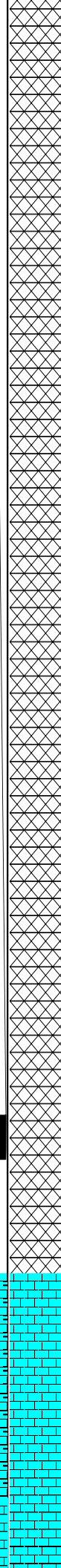
Drill with seawater & Hi-Vis sweeps.  
Returns to seabed 106.4m - 850.0m

Drill with seawater & Hi-Vis sweeps.  
Returns to seabed 106.4m - 850.0m





740  
750  
760  
770  
780  
790  
800  
810  
820  
830  
840  
850  
860  
870



MD: 755.72m Azi: 175.57°  
 TVD: 755.76m Incl: 2.82°

MD: 785.01m Azi: 168.12°  
 TVD: 784.94m Incl: 0.33°

MD: 814.35m Azi: 171.73°  
 TVD: 814.28m Incl: 0.20°

MD: 866.19m Azi: 140.35°  
 TVD: 866.2m Incl: 0.23°

Drill with seawater & Hi-Vis sweeps.  
 Returns to seabed 106.4m - 850.0m

16" Hole Section TD 850.0m

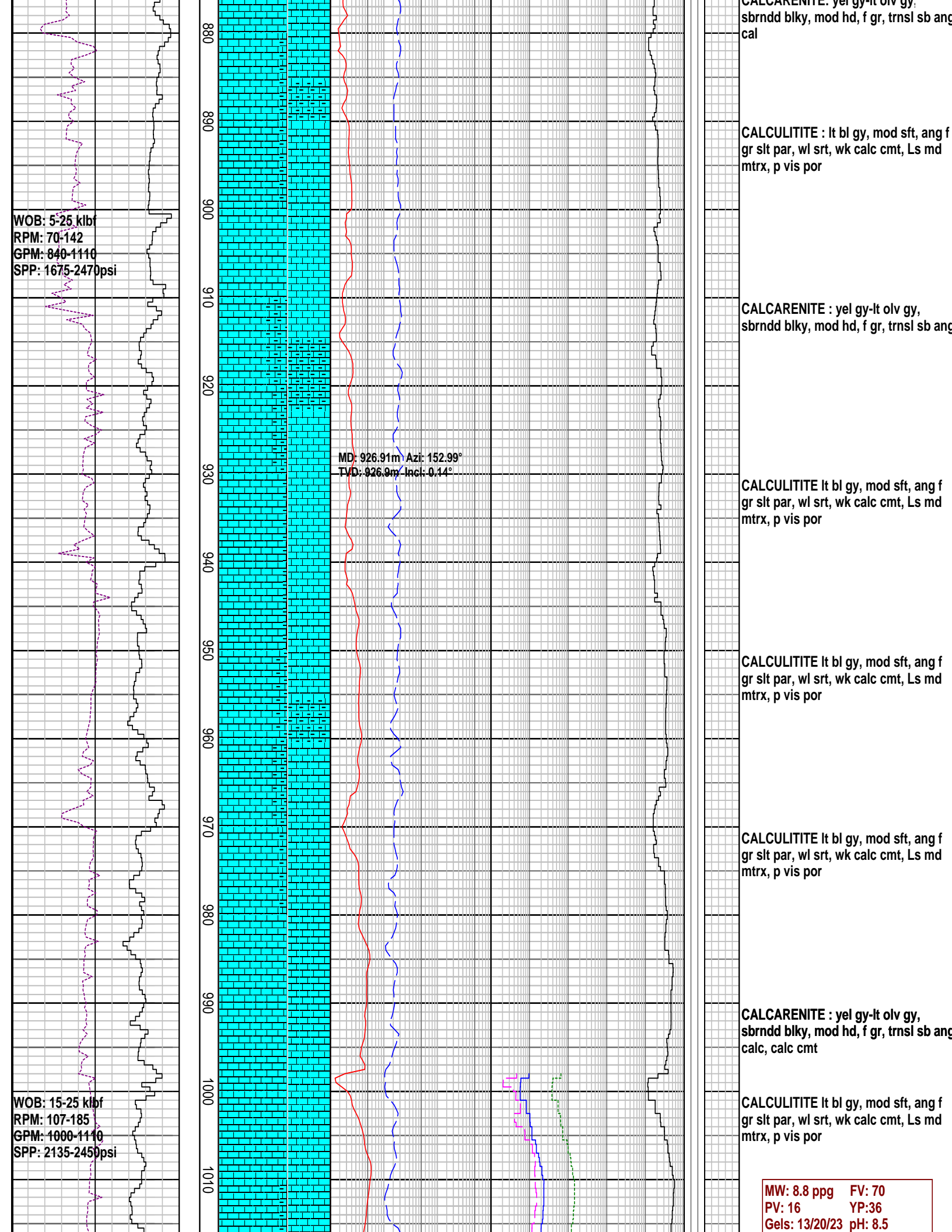
Drill with KCl/PHPA mud  
 850.0m to Well TD

MW: 8.7 ppg FV: 153  
 PV: 24 YP:40  
 Gels: 10/12/12 pH: 9.0

FIT @ 853.0m with 8.8 ppg  
 EMW: 15.06 ppg @ 900 psi

CALCULITITE lt bl gy, mod sft, ang f  
 gr slt par, wl srt, wk calc cmt, Ls md  
 mtrx, p vis por

CALCARENITE: vel gy lt cly gy



WOB: 5-25 klb  
 RPM: 70-142  
 GPM: 840-1110  
 SPP: 1675-2470psi

MD: 926.91m Azi: 152.99°  
 TVD: 926.9m Incl: 0.14°

WOB: 15-25 klb  
 RPM: 107-185  
 GPM: 1000-1110  
 SPP: 2135-2450psi

CALCARENITE : yel gy-lt olv gy,  
 sbrndd blk, mod hd, f gr, trnsl sb and  
 cal

CALCULITITE : lt bl gy, mod sft, ang f  
 gr slt par, wl srt, wk calc cmt, Ls md  
 mtrx, p vis por

CALCARENITE : yel gy-lt olv gy,  
 sbrndd blk, mod hd, f gr, trnsl sb and  
 cal

CALCULITITE lt bl gy, mod sft, ang f  
 gr slt par, wl srt, wk calc cmt, Ls md  
 mtrx, p vis por

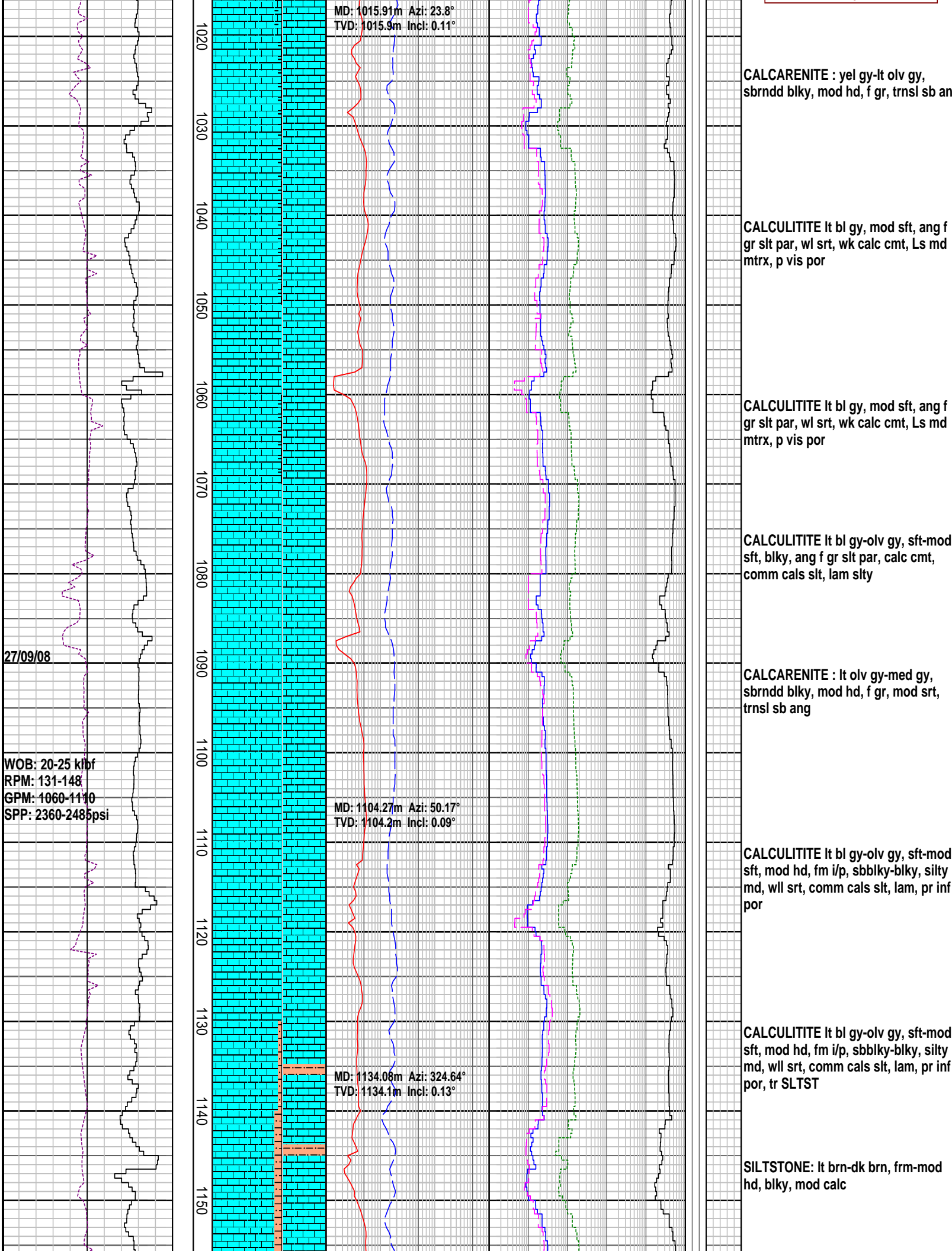
CALCULITITE lt bl gy, mod sft, ang f  
 gr slt par, wl srt, wk calc cmt, Ls md  
 mtrx, p vis por

CALCULITITE lt bl gy, mod sft, ang f  
 gr slt par, wl srt, wk calc cmt, Ls md  
 mtrx, p vis por

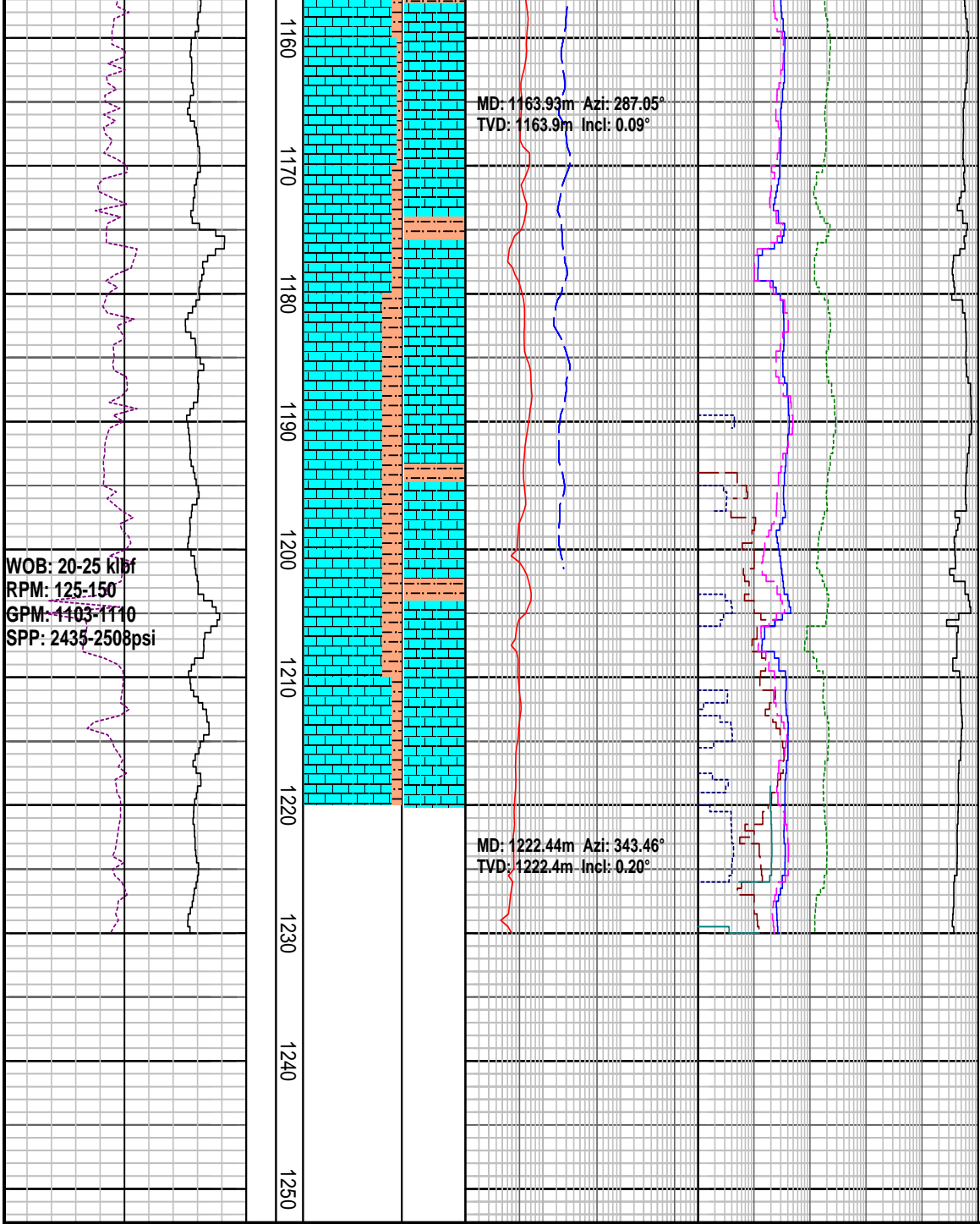
CALCARENITE : yel gy-lt olv gy,  
 sbrndd blk, mod hd, f gr, trnsl sb and  
 cal, calc cmt

CALCULITITE lt bl gy, mod sft, ang f  
 gr slt par, wl srt, wk calc cmt, Ls md  
 mtrx, p vis por

MW: 8.8 ppg FV: 70  
 PV: 16 YP: 36  
 Gels: 13/20/23 pH: 8.5







CALCULITITE lt bl gy-olv gy, sft-mod sft, mod hd, fm i/p, sbblky-blky, silty md, wll srt, comm calcs slt, lam, pr inf por

SILTSTONE: lt brn-dk brn, frm-mod hd, blky, mod calc

CALCULITITE lt bl gy-olv gy, sft-mod sft, mod hd, fm i/p, sbblky-blky, silty md, wll srt, comm calcs slt, comm lam, pr inf por

SILTSTONE: lt brn-dk brn, frm-mod hd, blky, mod calc

### FORMATION EVALUATION LOG

Drilling Rate		CORE	MD meters 1:500	LITHOLOGY %	INTERPRETED LITHOLOGY	TOTAL GAS & RESISTIVITY		CHROMATOGRAPH						Oil Show P F G	Calcmtry	Lithology Description
ROP (m/hr)	WEIGHT ON BIT (klbf)					Total Gas %	Resistivity Deep	0.1	0.1	0.1	0.1	0.1	0.1			
200	160	120	80	40		1	10	100	0.1	Methane ppm	10000	P F G	Calcmtry	Lithology Description		
						0.2	200	0.1	Ethane ppm	10000						
								0.1	Propane ppm	10000						
								0.1	iso-Butane ppm	10000						
								0.1	n-Butane ppm	10000						
								0.1	iso-Pentane ppm	10000						
								0.1	n-Pentane ppm	10000						