



Company : 3TEC ENERGY CORP

Well : Basker-7

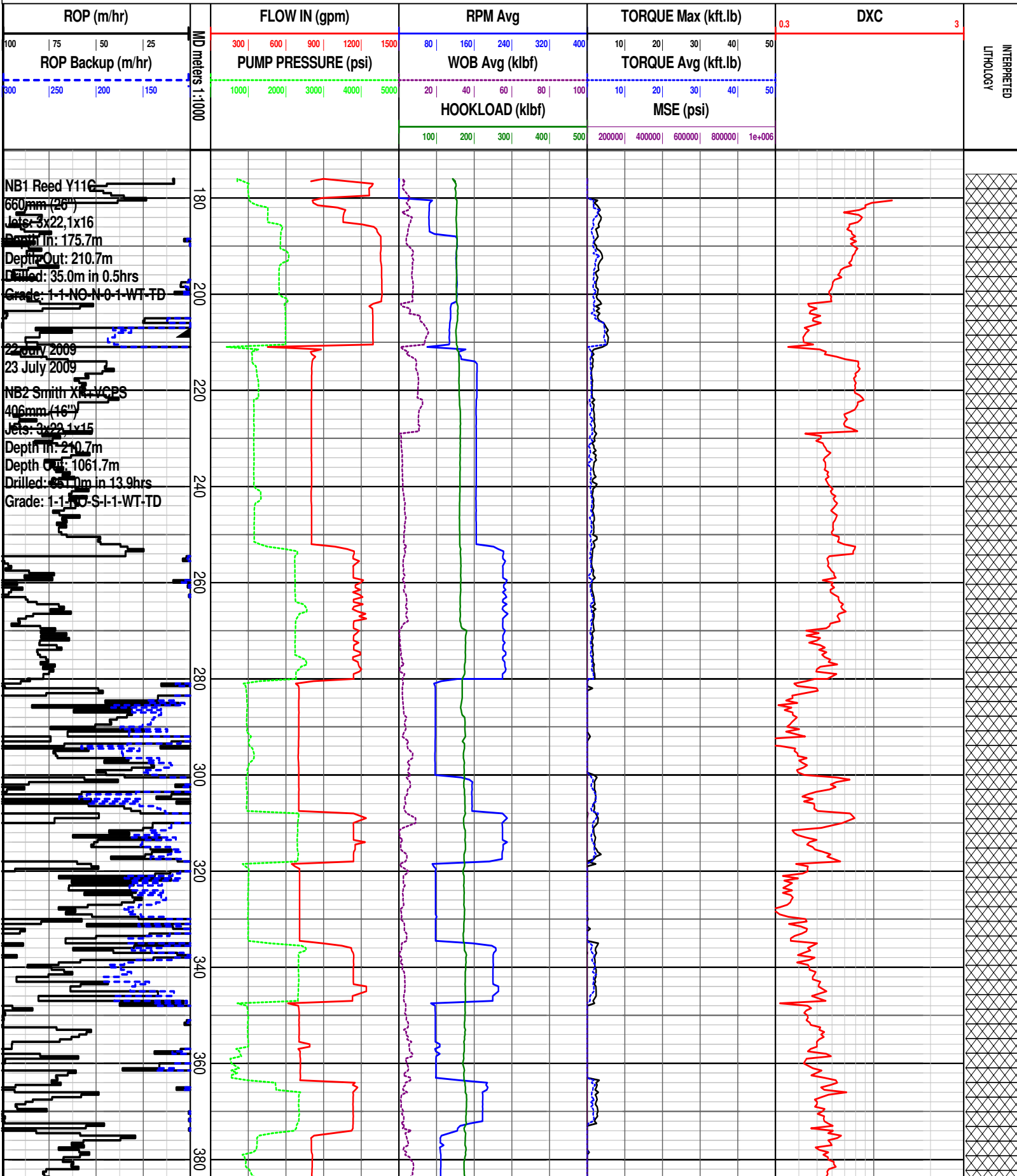
Interval : 170.00 - 3457.62 meters

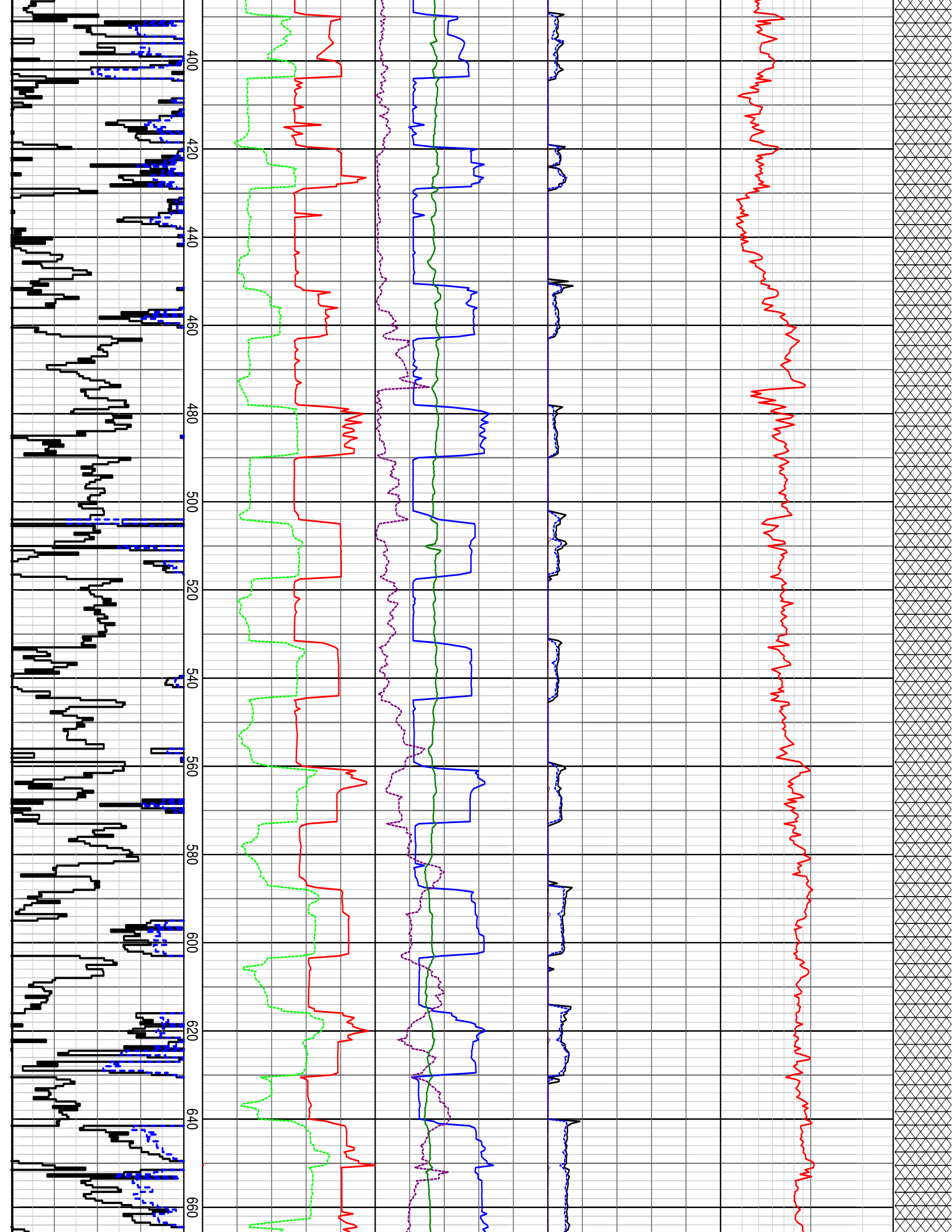
Created : 03/Aug/2009 4:48:18 AM

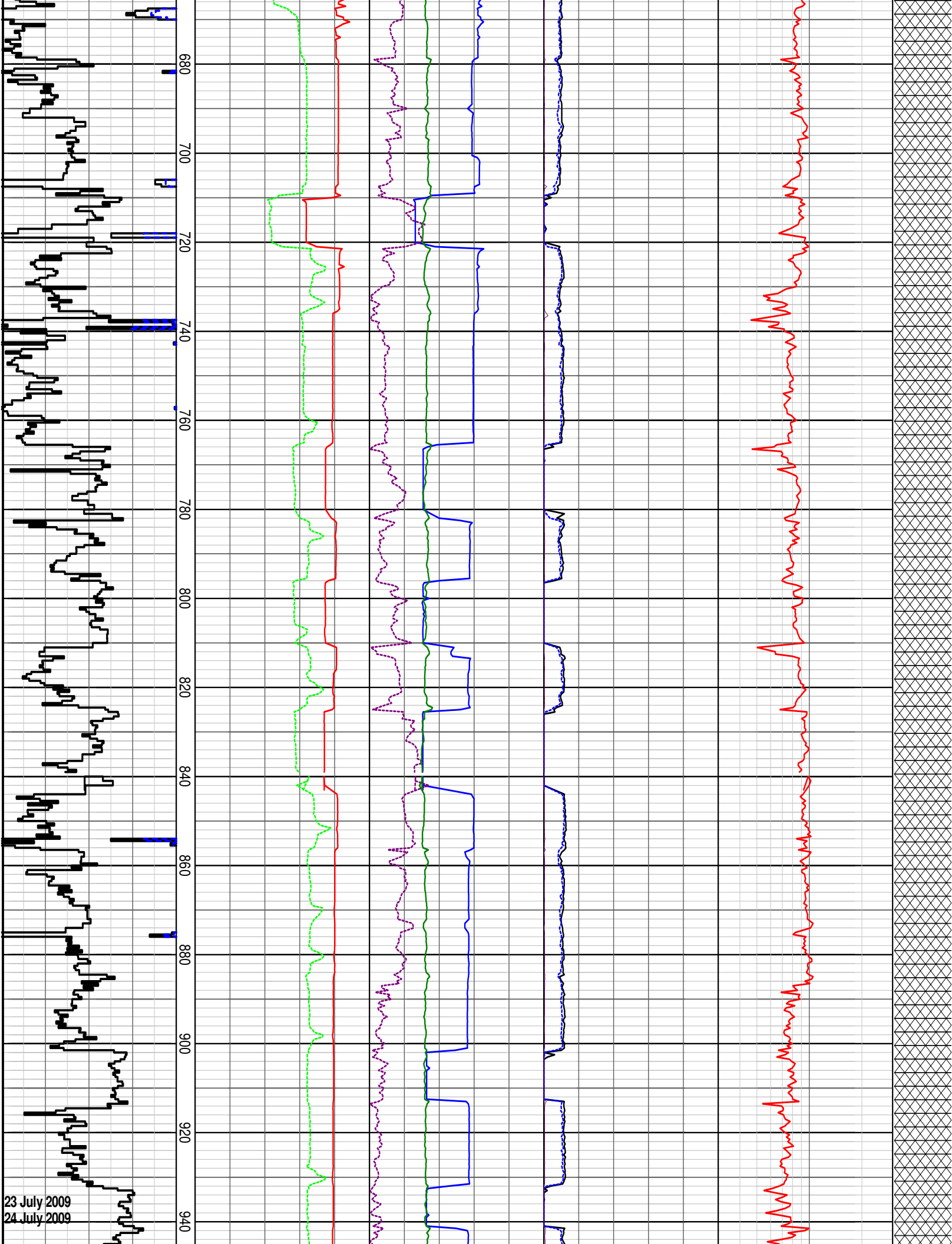


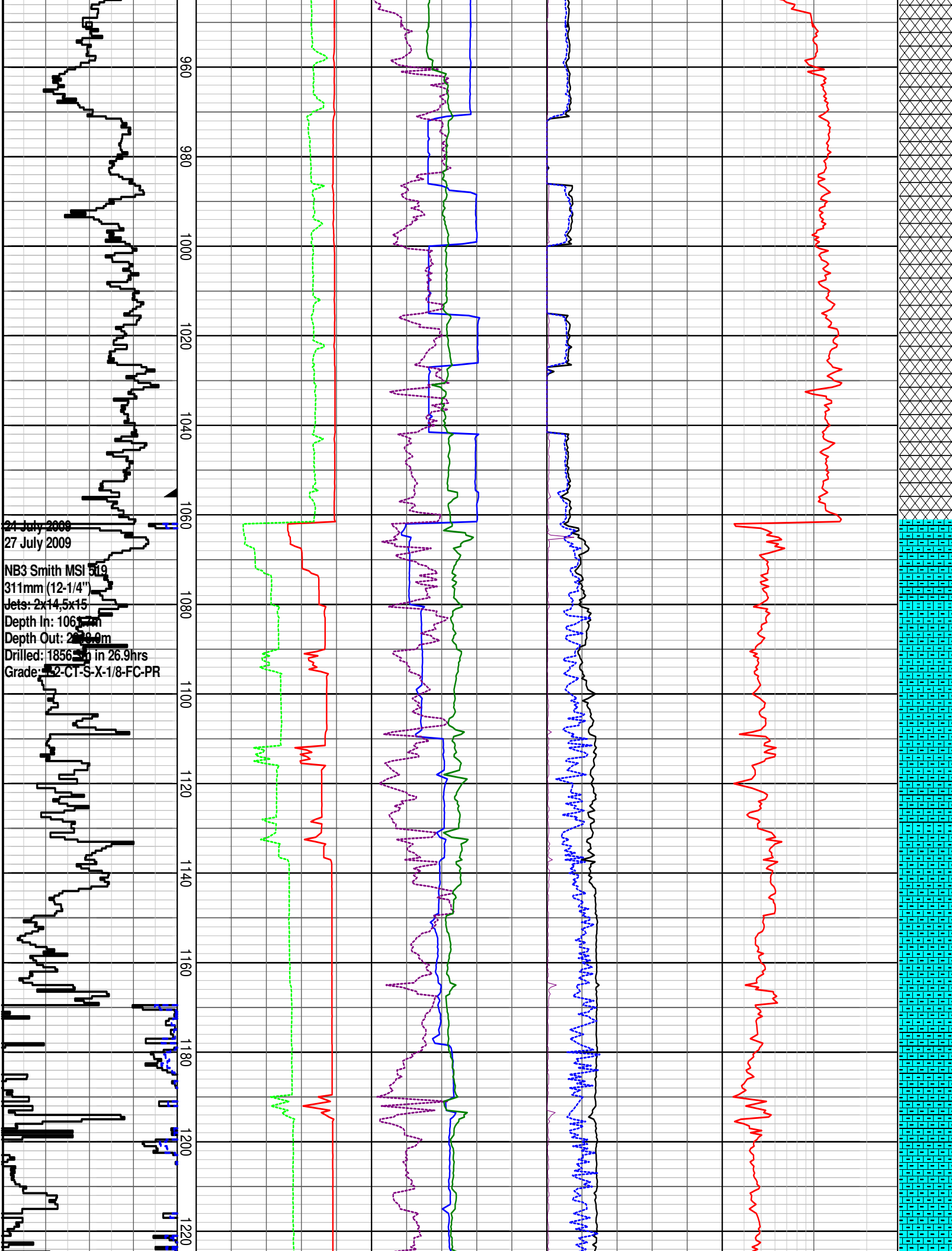
INTEQ

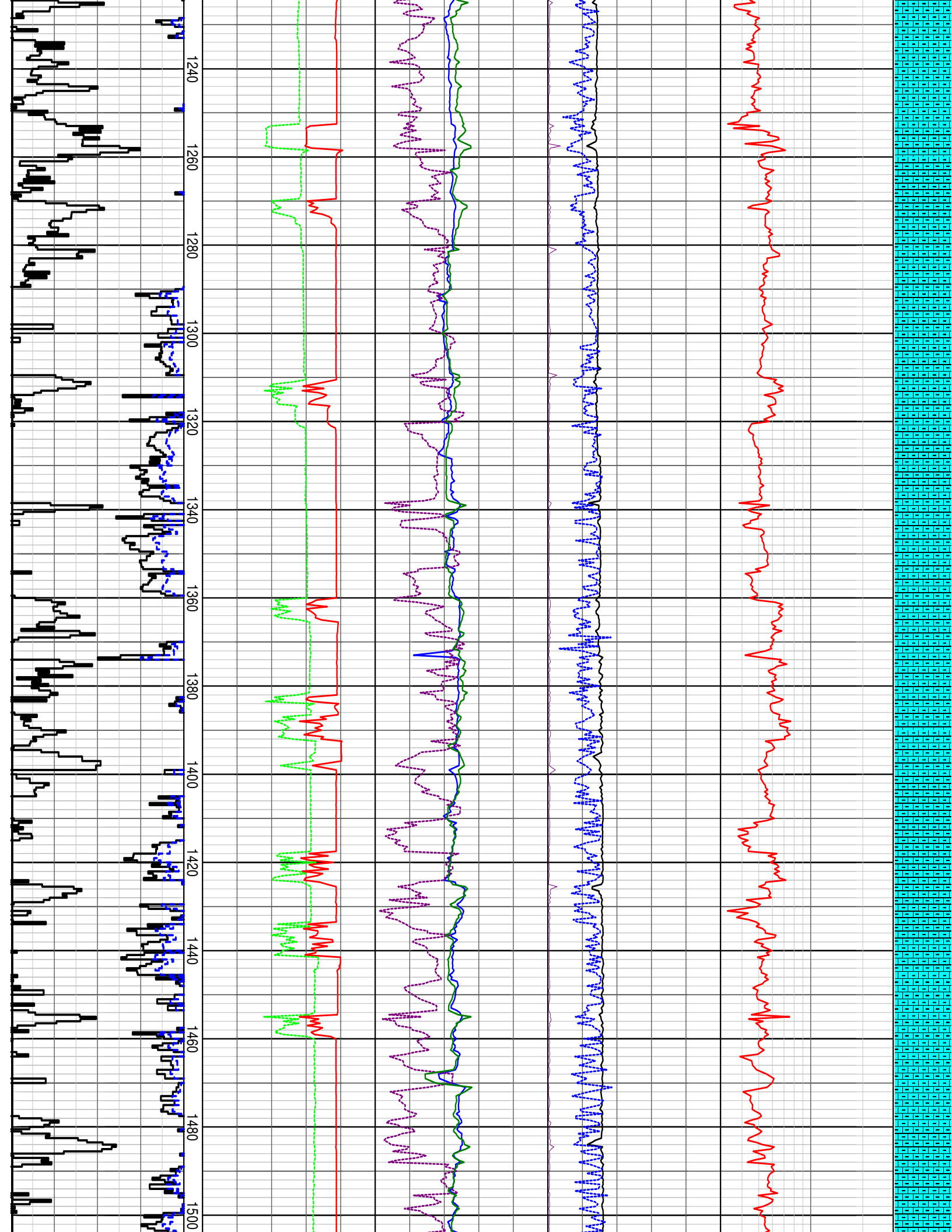
DRILLING DATA PLOT

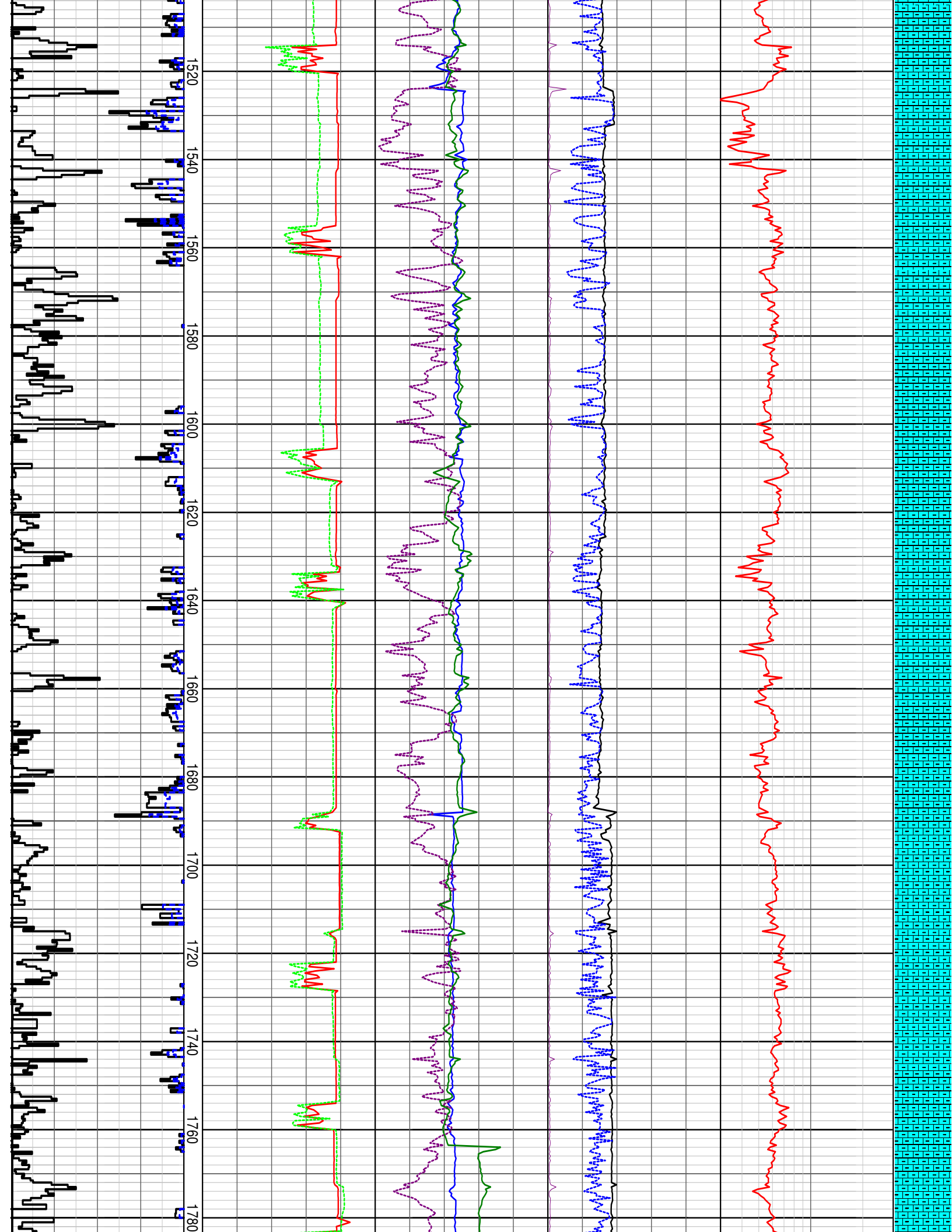


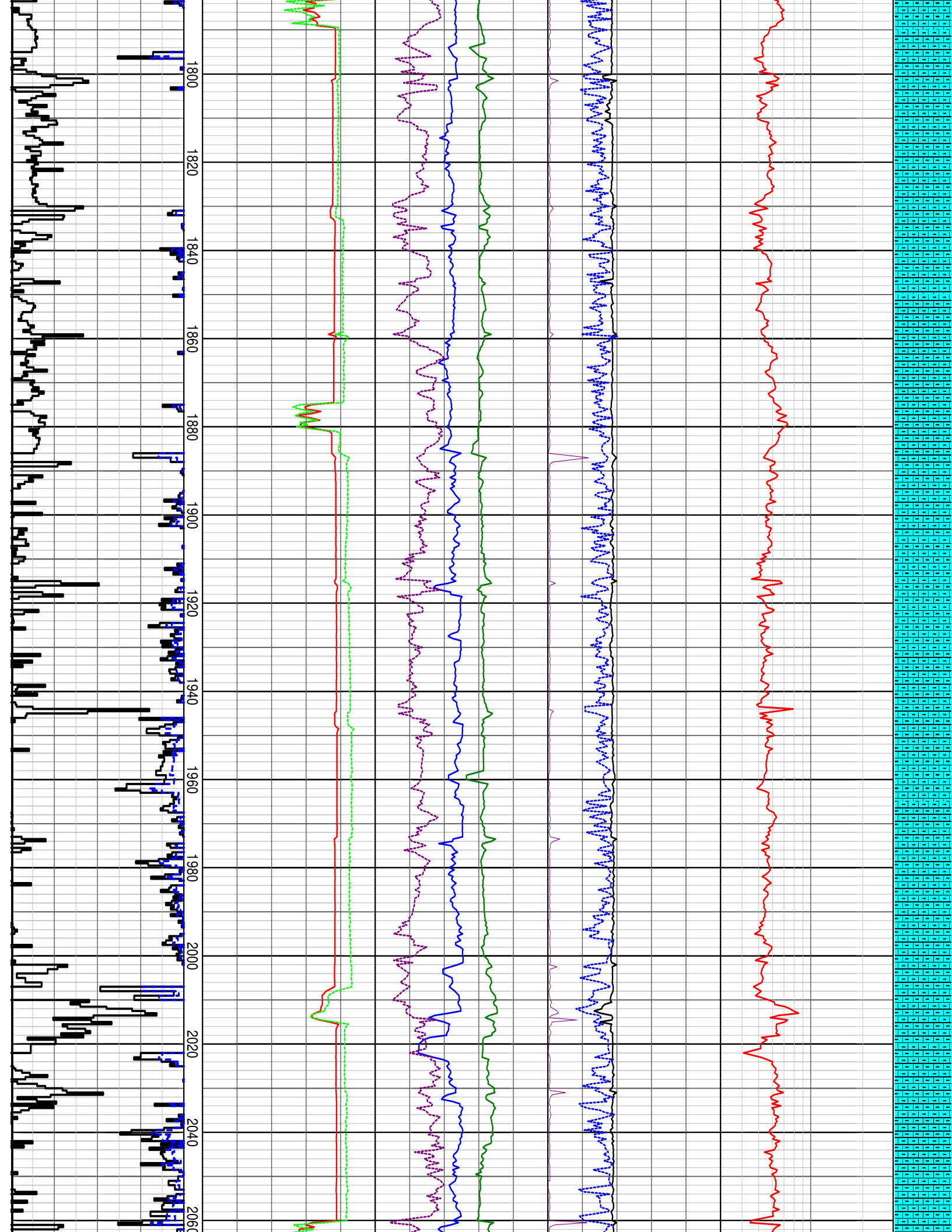


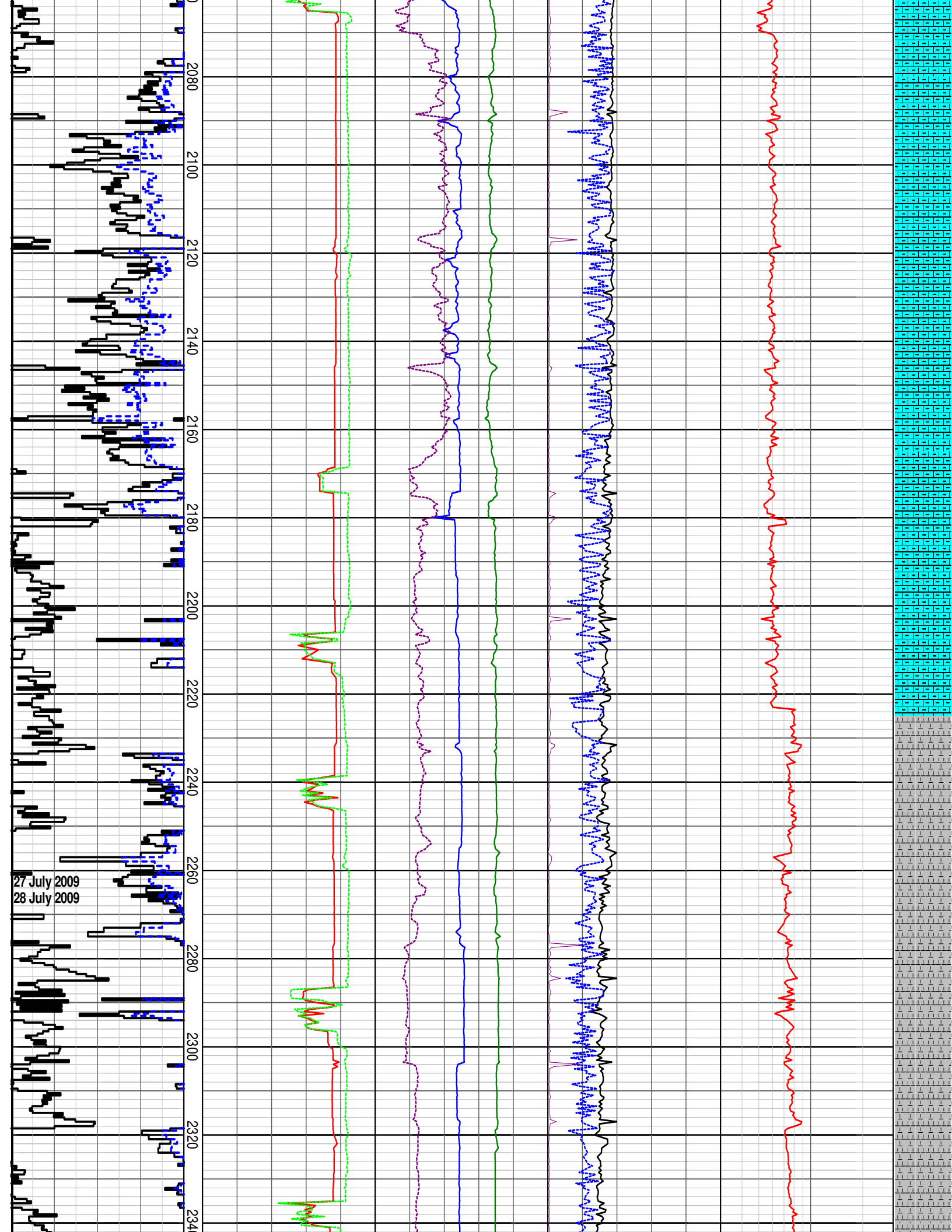


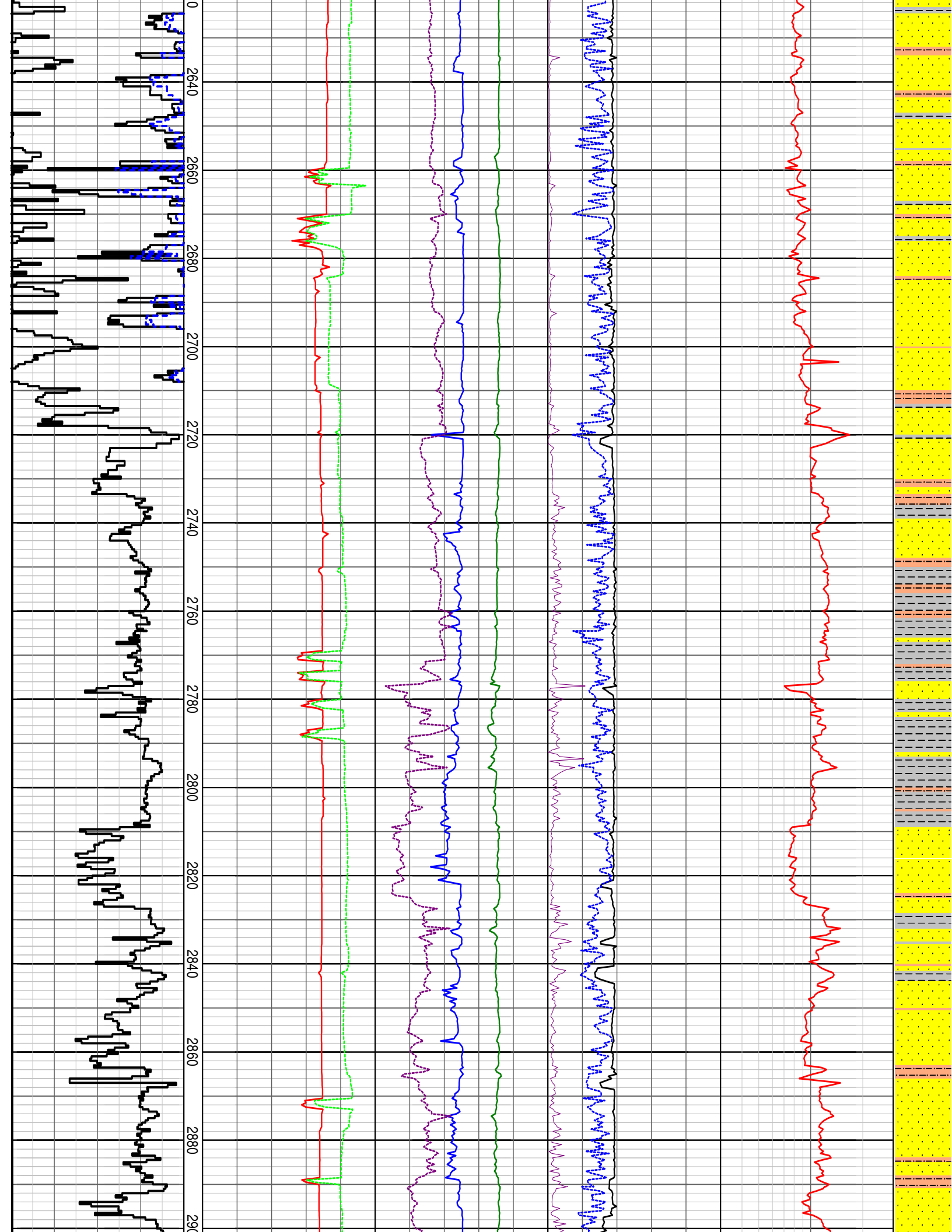




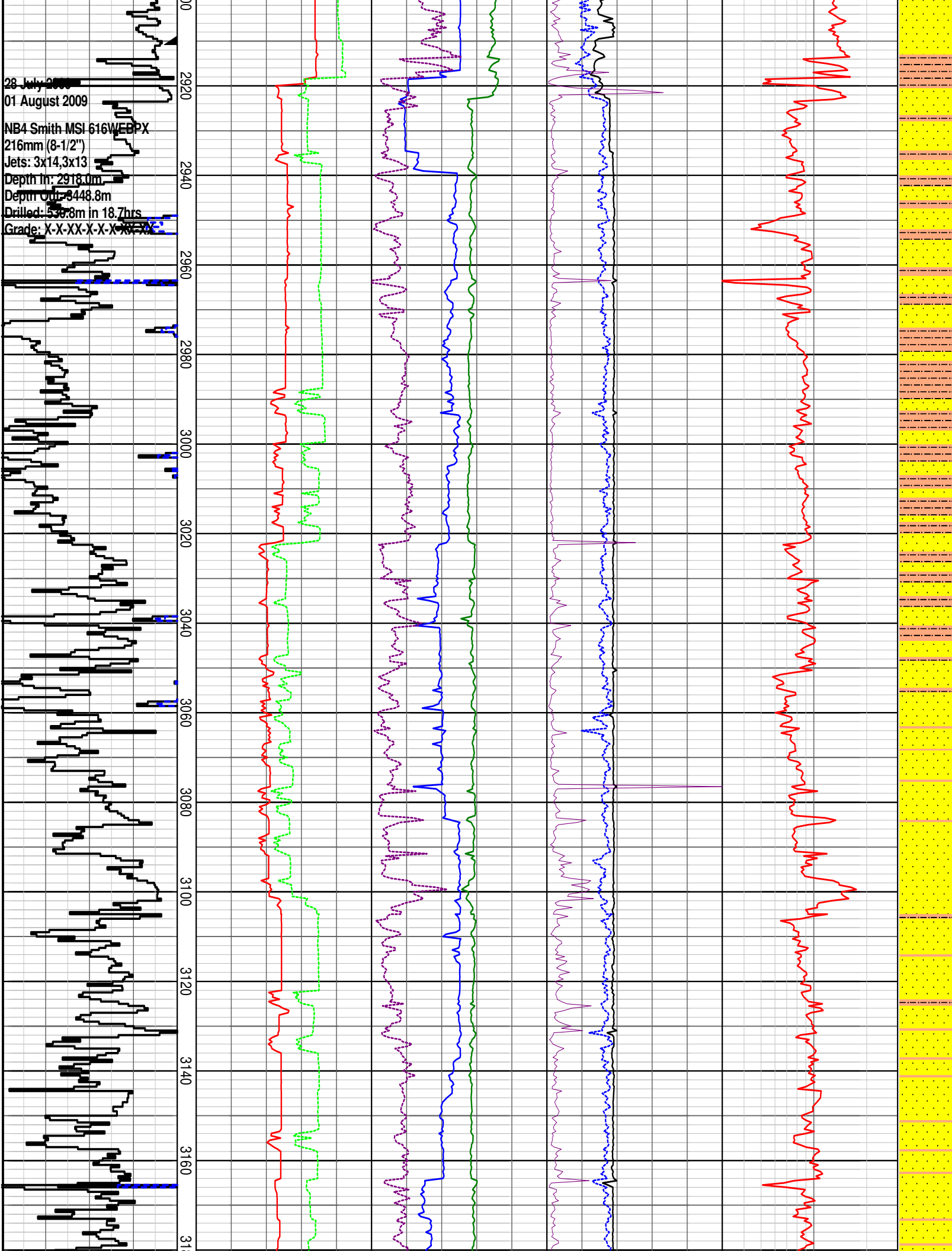


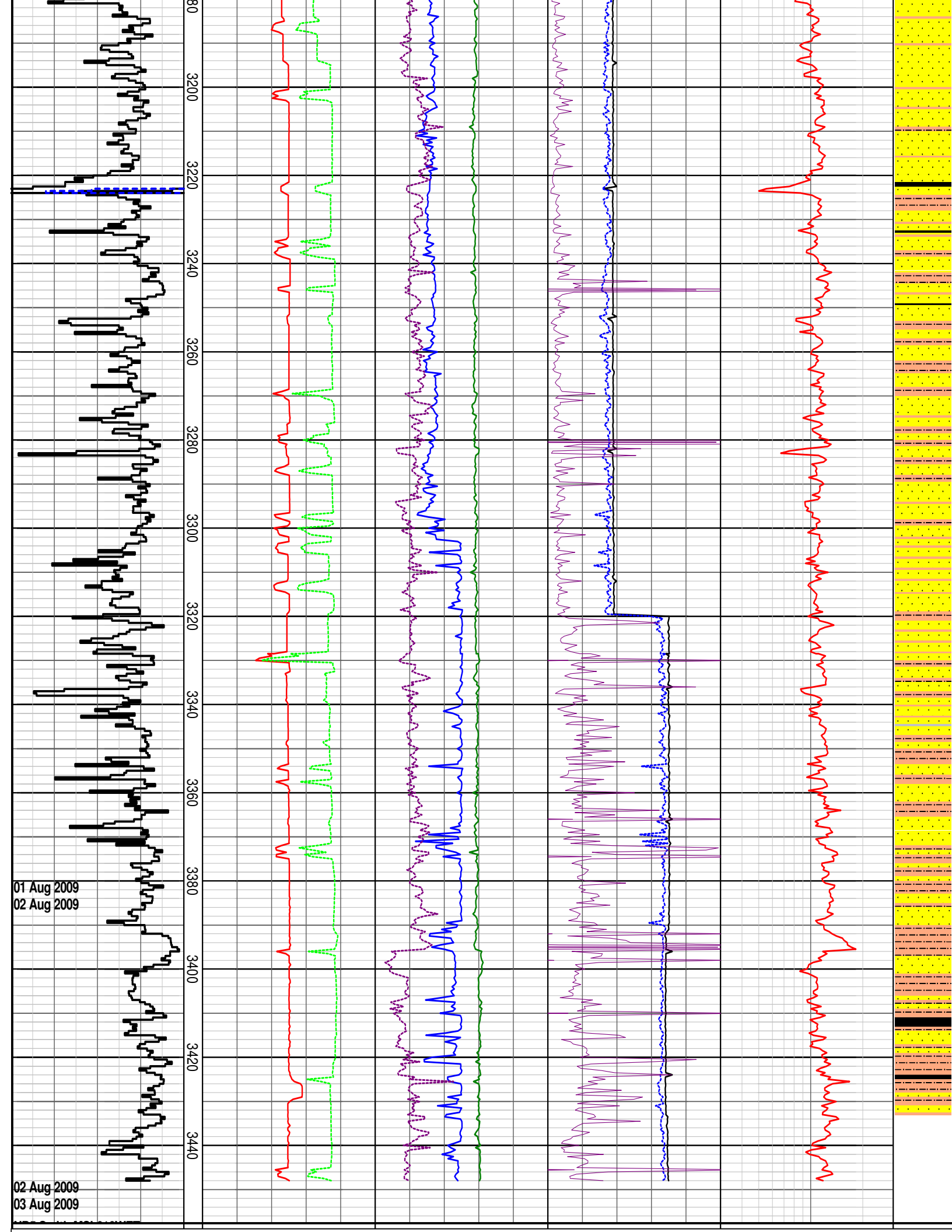






28 July 2009
01 August 2009
NB4 Smith MSI 616WEBPX
216mm (8-1/2")
Jets: 3x14,3x13
Depth In: 2918.0m
Depth Out: 3448.8m
Drilled: 530.8m in 18.7hrs
Grade: X-X-XX-X-X-X-X-X-X





DRILLING DATA PLOT

ROP (m/hr)		FLOW IN (gpm)	RPM Avg	TORQUE Max (kft.lb)	DXC	
100 75 50 25	MD meters 1:1000	300 600 900 1200 1500	80 160 240 320 400	10 20 30 40 50	0.3	3
ROP Backup (m/hr)		PUMP PRESSURE (psi)	WOB Avg (klbf)	TORQUE Avg (kft.lb)		
300 250 200 150		1000 2000 3000 4000 5000	20 40 60 80 100	10 20 30 40 50		
			HOOKLOAD (klbf)	MSE (psi)		
			100 200 300 400 500	200000 400000 600000 800000 1e+006		

INTERPRETED
LITHOLOGY