

Schlumberger

VISION Resistivity

1:500 Measured Depth

Real Time Data

Company: ROC Oil

Well: Basker 7

Field: Gippsland Basin

Rig Name: Ocean Patriot

State: Victoria

Country: AUSTRALIA

Latitude: 38° 17' 58.78" S

Longitude: 148° 42' 22.31" E

Block:

FL: Gippsland Basin

FL1: VIC/L26

FL2:

Custom: 09ASQ0007

Rig Name: Ocean Patriot

Rig Type: Semi-Submersible

Log Measured From - Drill Floor: 21.5 m
Permanent Datum - Mean Sea Level



Casing Flange: 152.7 m

Ground Level: 154.2 m

Acquisition Dates: 26 Jul 09

Print Interval: 1050.0(m) to 2415.0(m)

Index Types: Measured Depth

Index Scales: 1:500

Depth Source: Driller Depth

Depth Sensor: DES

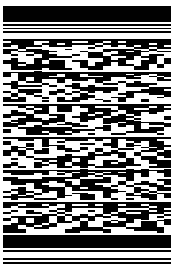
Conveyance: Drill Pipe

Print Type: Field

Spud Date:

Other Services:

Directional Surveys

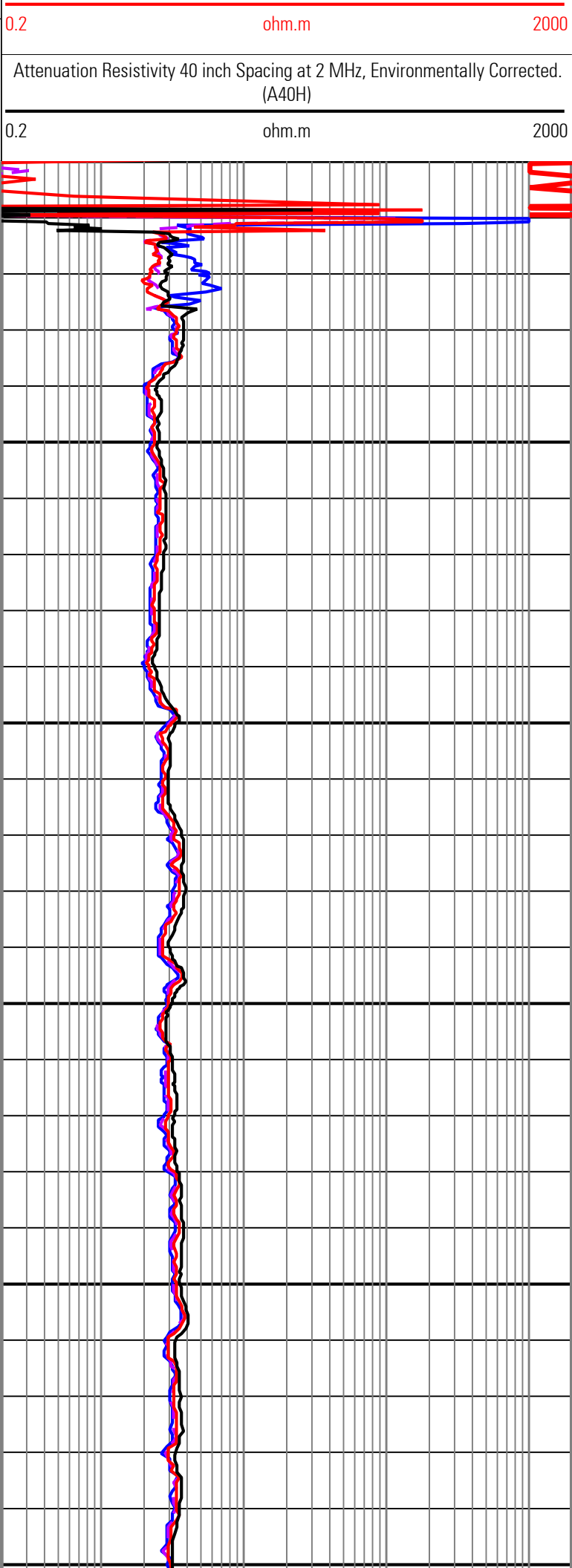
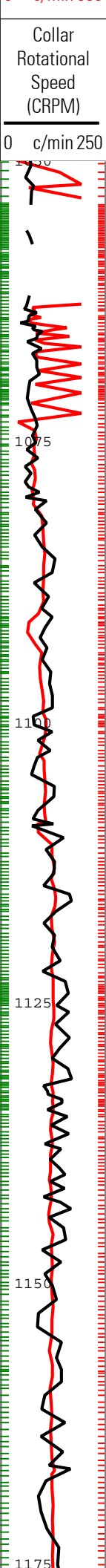
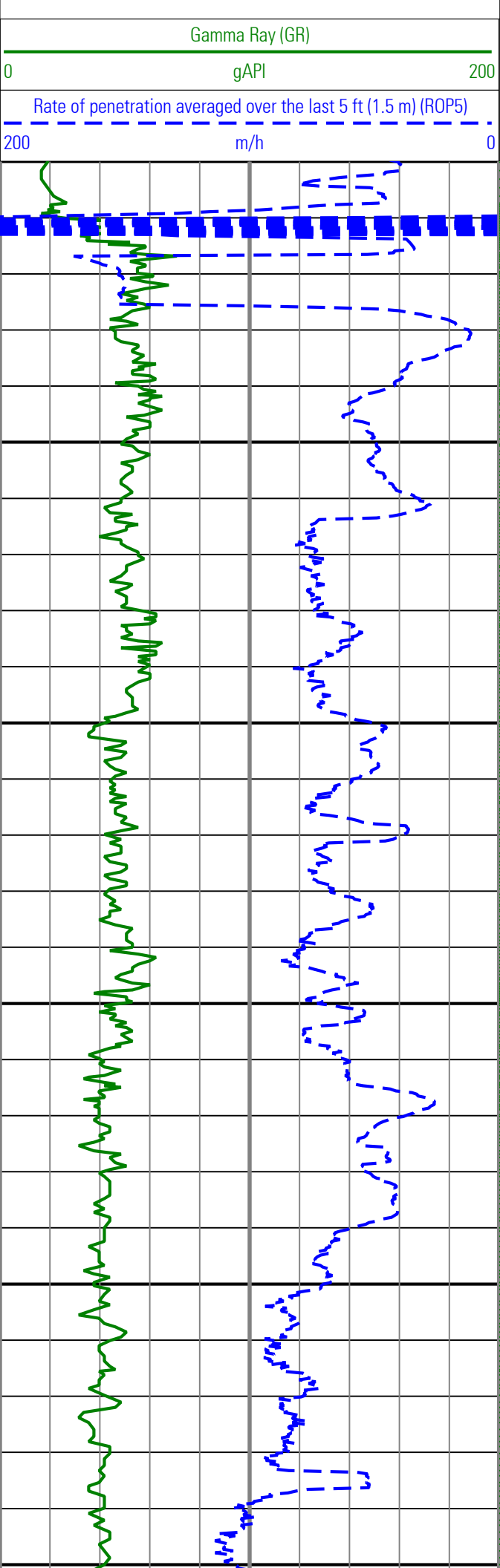


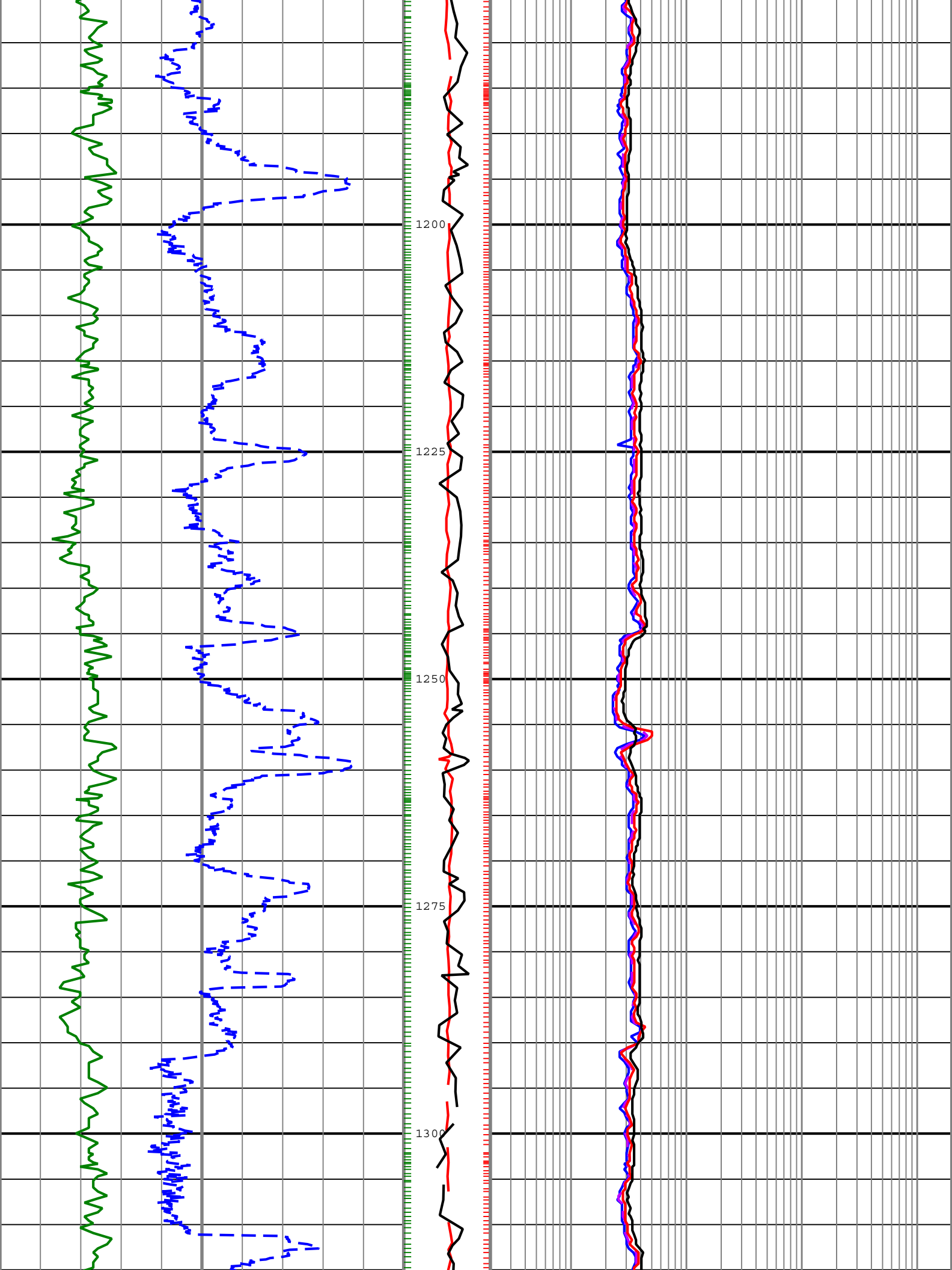
Disclaimer

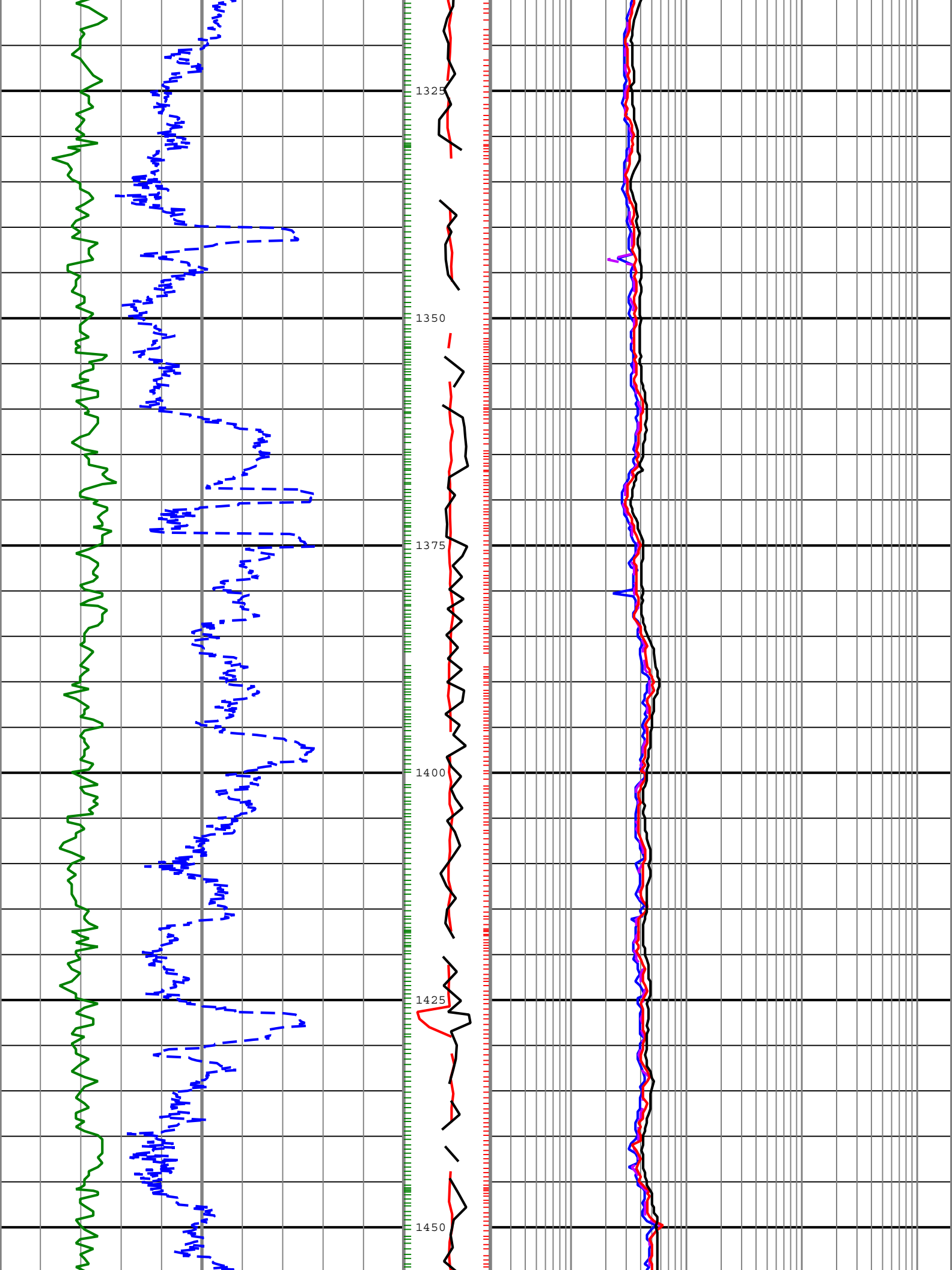
THE USE OF AND RELIANCE UPON THIS RECORDED-DATA BY THE HEREIN NAMED COMPANY (AND ANY OF ITS AFFILIATES, PARTNERS, REPRESENTATIVES, AGENTS, CONSULTANTS AND EMPLOYEES) IS SUBJECT TO THE TERMS AND CONDITIONS AGREED UPON BETWEEN SCHLUMBERGER AND THE COMPANY, INCLUDING: (a) RESTRICTIONS ON USE OF THE RECORDED-DATA; (b) DISCLAIMERS AND WAIVERS OF WARRANTIES AND REPRESENTATIONS REGARDING COMPANY'S USE AND RELIANCE UPON THE RECORDED-DATA; AND (c) CUSTOMER'S FULL AND SOLE RESPONSIBILITY FOR ANY INFERENCE DRAWN OR DECISION MADE IN CONNECTION WITH THE USE OF THIS RECORDED-DATA.

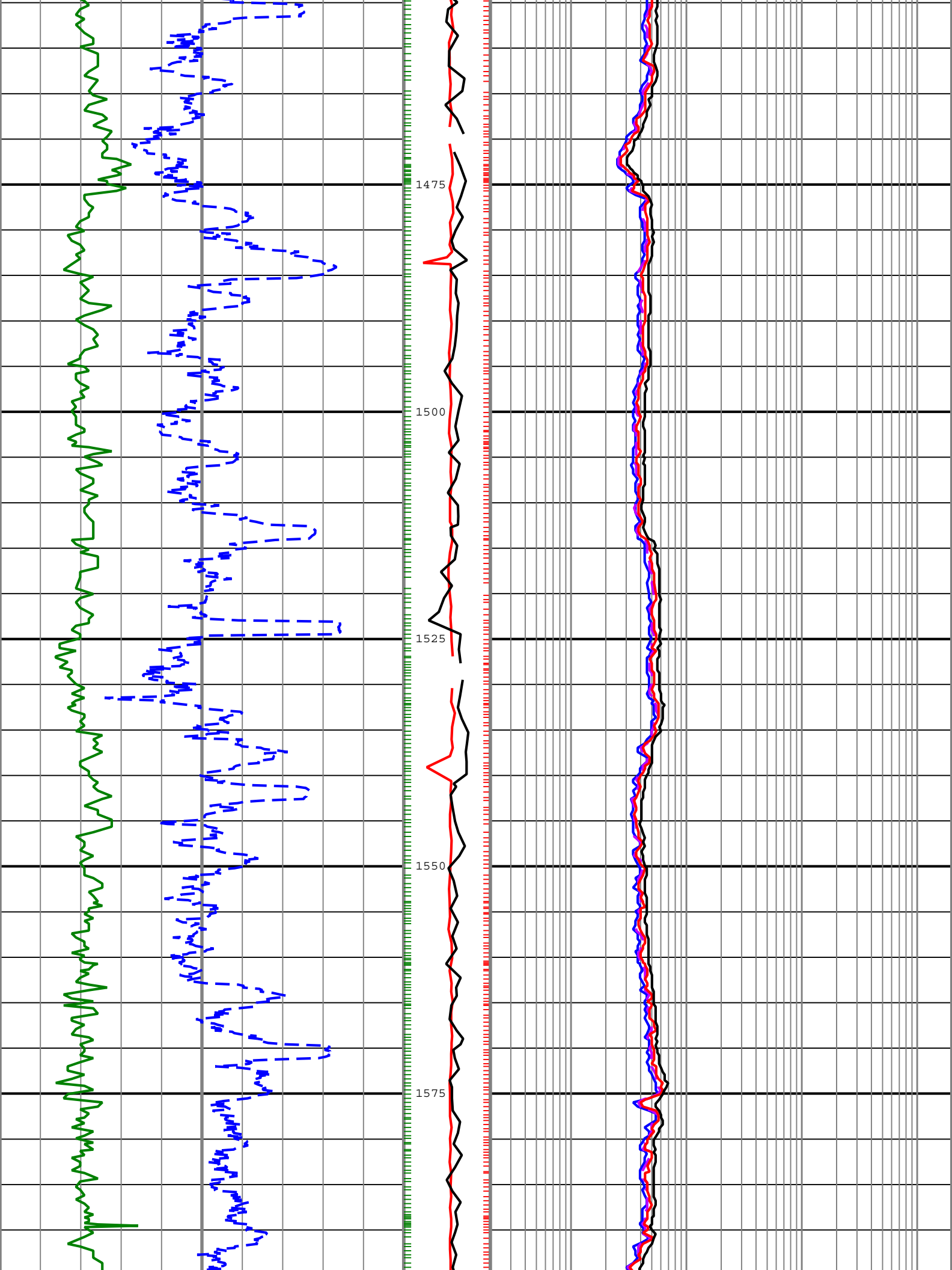
Contents

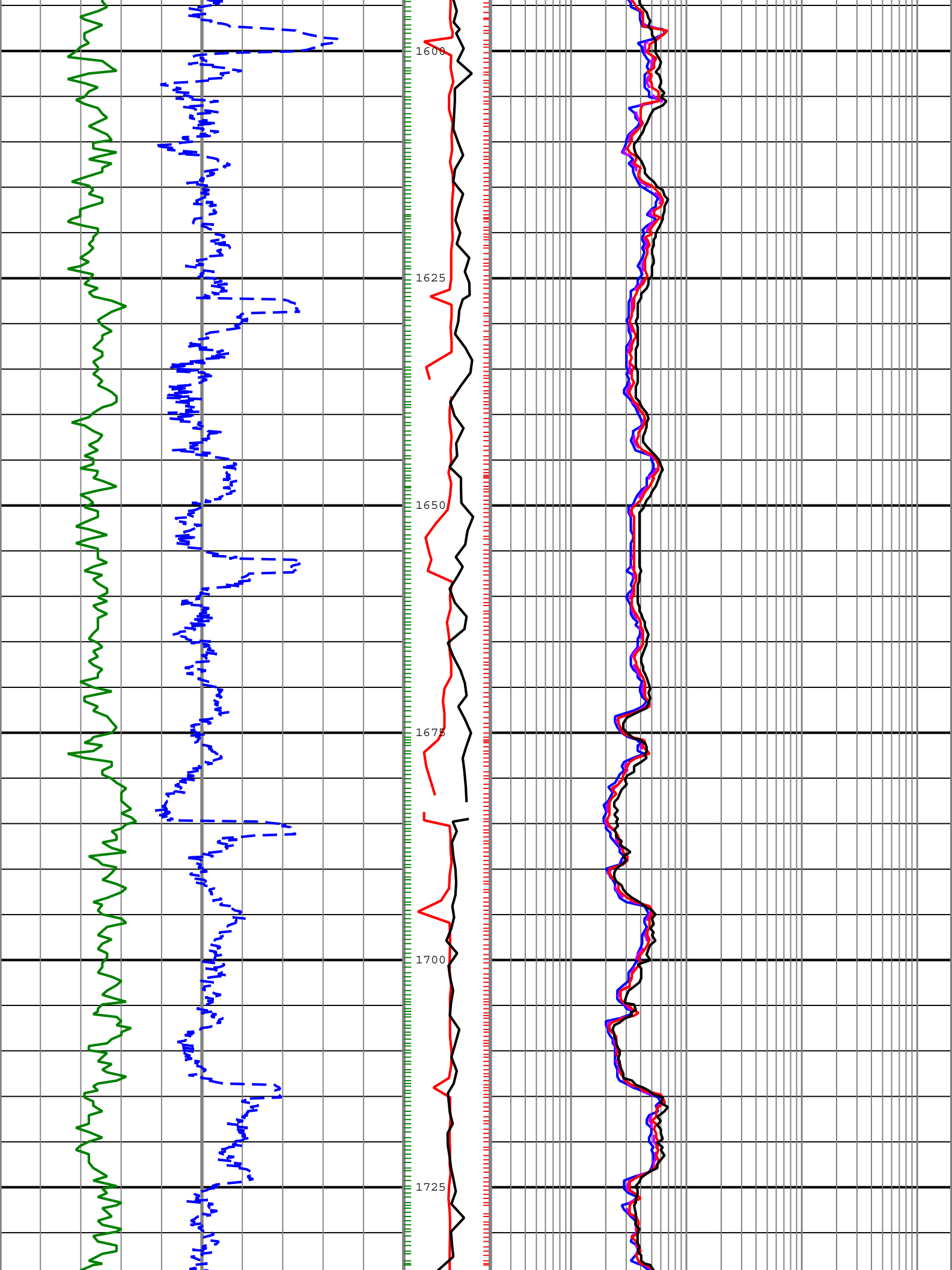
1. Header
2. Disclaimer
3. Contents
4. Run 3
 - 4.1 Software Version
 - 4.2 Pass Summary
 - 4.3 Log (MD_ARC Dual Resistivity 3-Log RT)
 - 4.4 Parameter Listing
5. Tail

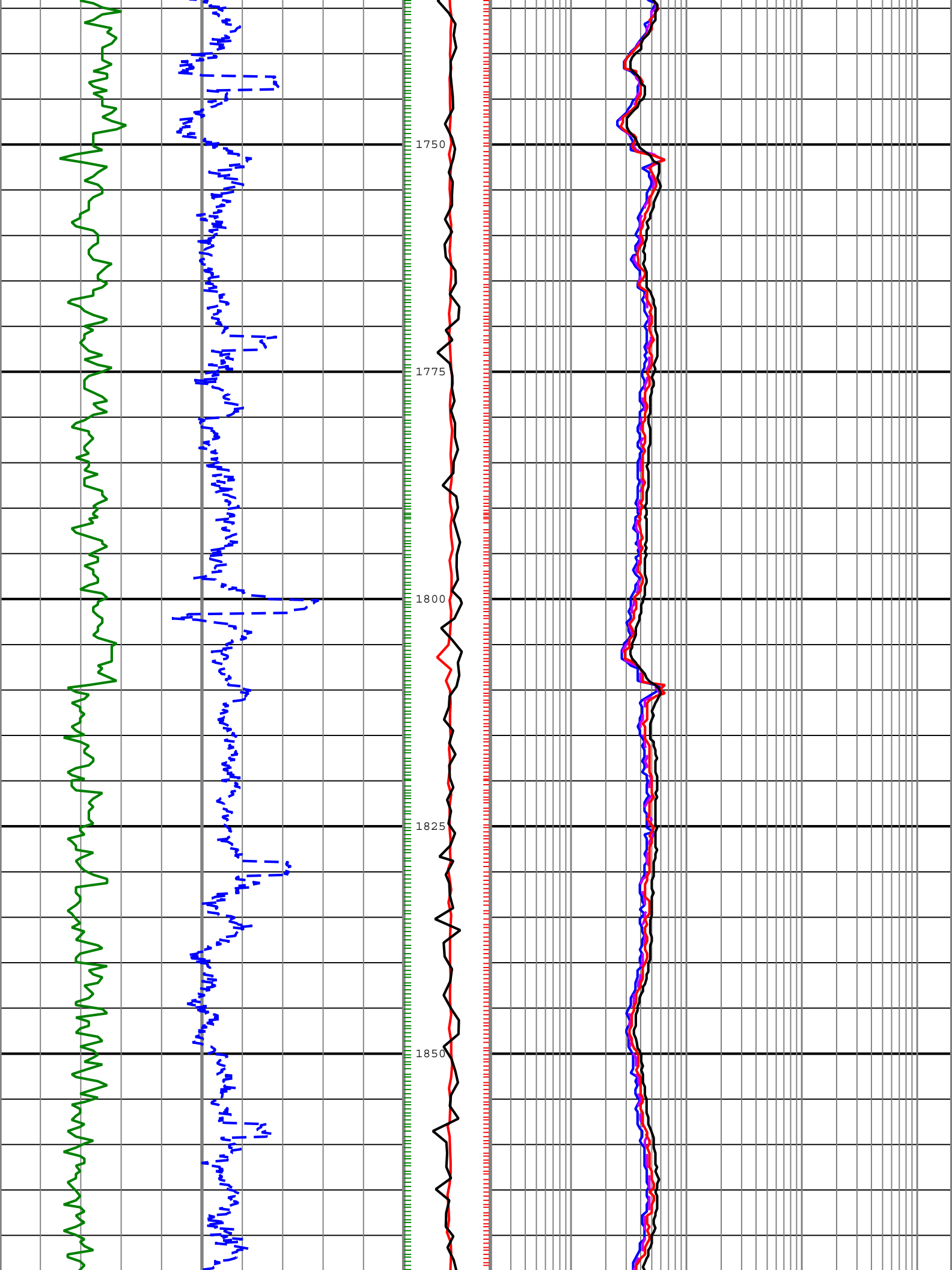


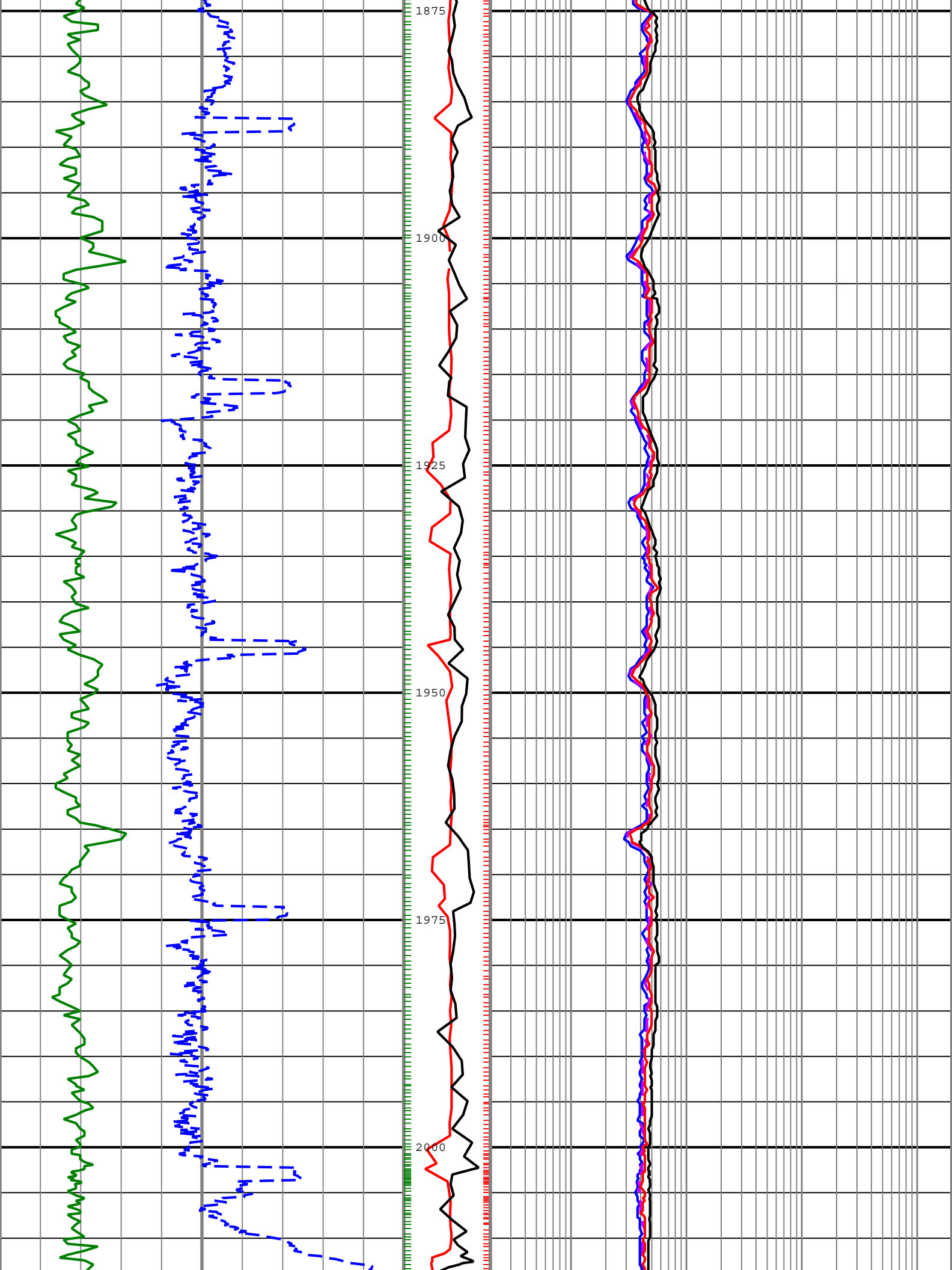


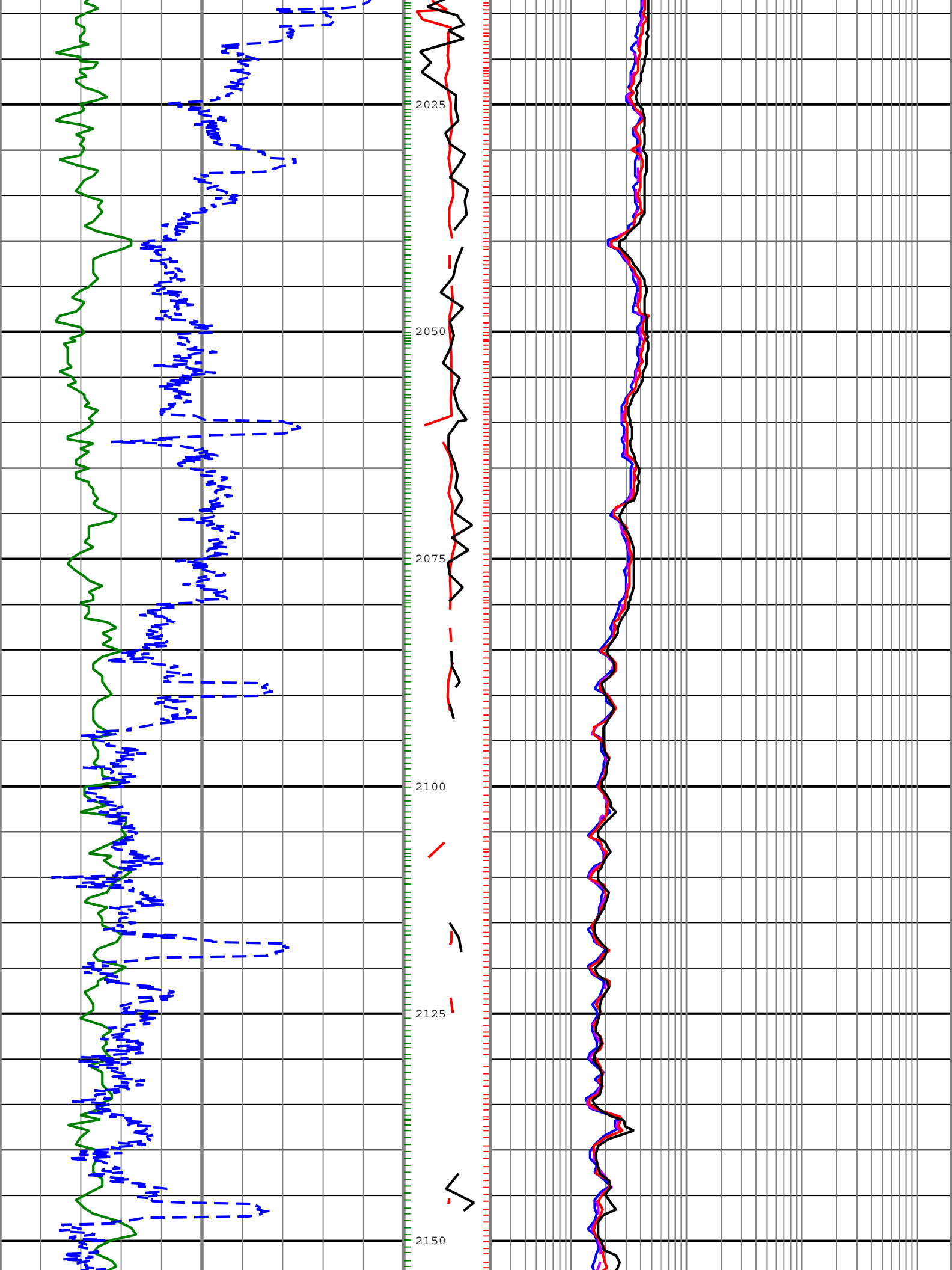


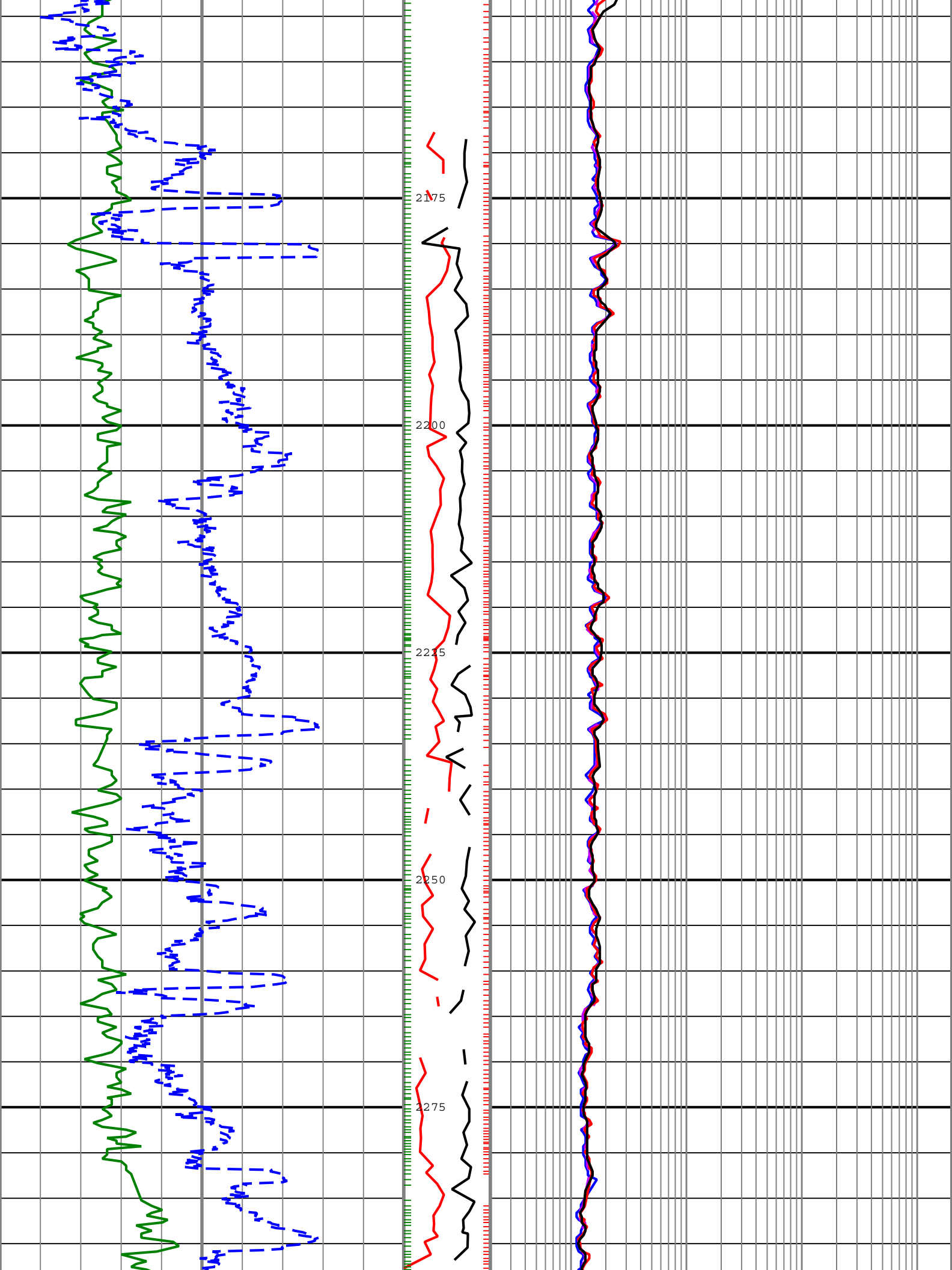


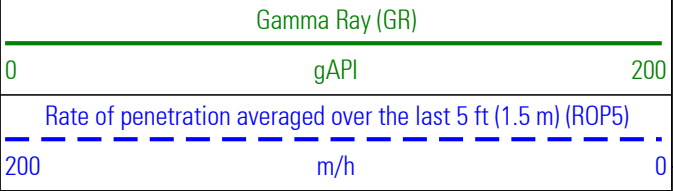
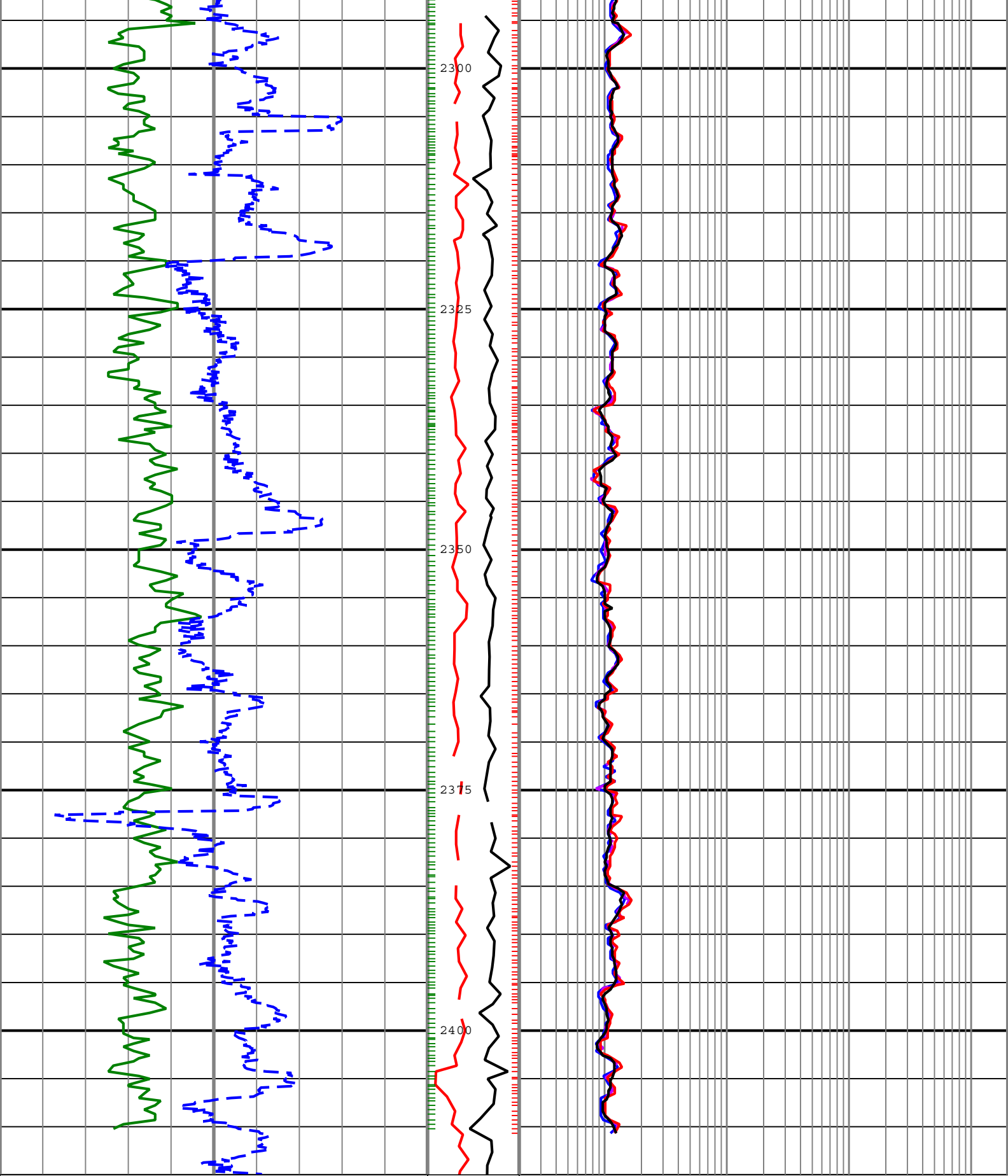












(CRPM)
0 c/min 250

Phase Shift Resistivity 40 inch Spacing at 2 MHz, Environmentally Corrected. (P40H)		
0.2	ohm.m	2000
Attenuation Resistivity 40 inch Spacing at 2 MHz, Environmentally Corrected. (A40H)		
0.2	ohm.m	2000

-P40H - Phase Shift Resistivity 40 inch Spacing at 2 MHz, Environmentally Corrected.

GR_CAL - Calibrated Gamma Ray

Description: ARC Dual Frequency Resistivity RT Format: Log (MD_ARC Dual Resistivity 3-Log RT) Index Scale: 1:500 Index Unit: m Index Type: Measured
Depth Creation Date: 28-Jul-2009 04:09:40

Channel Processing Parameters

Parameter	Description	ToolPath	Value	Unit
BHK	Drilling Fluid Potassium Concentration	Borehole	4.94	%
BHT	Bottom Hole Temperature	Borehole	39	degC
BS	Bit Size	COMPLETION	Depth Zoned	in
DFD	Drilling Fluid Density	Borehole	1.09	g/cm3
DFT	Drilling Fluid Type	Borehole	Water	
GGRD	Geothermal Gradient	Borehole	18.23	degC/km
GRSE	Generalized Mud Resistivity Selection	Borehole	Computed (GEN-9)	
GTSE	Generalized Temperature Selection	Borehole	Gradient From Surface	
MST	Mud Sample Temperature	Borehole	Time Zoned	degC
RMS	Resistivity of Mud Sample	Borehole	Time Zoned	ohm.m
SHT	Surface Hole Temperature	Borehole	20	degC
TD	Total Measured Depth	Borehole	3000	m

Depth Zone Parameters

Parameter	Value	Start (m)	Stop (m)
BS	16	1050	1061.7
BS	12.25	1061.7	

All depth are actual.

Time Zone Parameters

Parameter	Value	Start Time	Stop Time	Start Depth (m)	Stop Depth (m)
MST	20	26-Jul-2009 15:32:43	28-Jul-2009 02:09:39	1027.73	2316
MST	21	28-Jul-2009 02:09:39		2316	
RMS	0.074	26-Jul-2009 15:32:43	28-Jul-2009 02:09:39	1027.73	2316
RMS	0.099	28-Jul-2009 02:09:39		2316	

All depth are at tool zero.

Tool Control Parameters

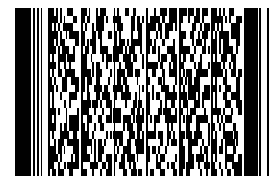
Parameter	Description	ToolPath	Value	Unit
OFFBTM_TH	Threshold for deciding whether the bit is off bottom	DnMWorkflow	Time Zoned	m

Time Zone Parameters

Parameter	Value	Start Time	Stop Time	Start Depth (m)	Stop Depth (m)
OFFBTM_TH	0.5	26-Jul-2009 15:32:43	26-Jul-2009 15:53:26	1027.73	1028.73
OFFBTM_TH	0.55	26-Jul-2009 15:53:26		1028.73	

All depth are at tool zero.

Company: ROC Oil
Well: Basker 7
Field: Gippsland Basin
Rig Name: Ocean Patriot
State: Victoria
Country: AUSTRALIA



Schlumberger

VISION Resistivity
1:500 Measured Depth
Real Time Data