

# Schlumberger

geoVISION Resistivity  
1:500 True Vertical Depth  
Recorded Mode Data

Company: ROC Oil

Well: Basker-7

Field: Gippsland Basin

Rig Name: Ocean Patriot

State: Victoria

Country: AUSTRALIA

Latitude: 38° 17' 58.78" S

Longitude: 148° 42' 22.31" E

Block:

FL: VIC/L26

FL1:

FL2:

Custom: 09ASQ0007

Rig Name: Ocean Patriot

Rig Type: Semi-Submersible

Log Measured From - Drill Floor: 21.5 m  
Permanent Datum - Mean Sea Level



Casing Flange: 152.7 m

Ground Level: 154.2 m

Acquisition Dates: 02 Aug 09 to 03 Aug 09

Print Interval: 3403.2(m) to 3537.1(m)

Index Types: True Vertical Depth

Index Scales: 1:500

Depth Source: Driller's Depth

Depth Sensor: DES

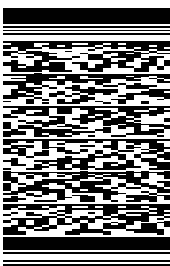
Conveyance: Drill Pipe

Print Type: Field

Spud Date:

Other Services:

Directional Surveys



## Disclaimer

THE USE OF AND RELIANCE UPON THIS RECORDED-DATA BY THE HEREIN NAMED COMPANY (AND ANY OF ITS AFFILIATES, PARTNERS, REPRESENTATIVES, AGENTS, CONSULTANTS AND EMPLOYEES) IS SUBJECT TO THE TERMS AND CONDITIONS AGREED UPON BETWEEN SCHLUMBERGER AND THE COMPANY, INCLUDING: (a) RESTRICTIONS ON USE OF THE RECORDED-DATA; (b) DISCLAIMERS AND WAIVERS OF WARRANTIES AND REPRESENTATIONS REGARDING COMPANY'S USE AND RELIANCE UPON THE RECORDED-DATA; AND (c) CUSTOMER'S FULL AND SOLE RESPONSIBILITY FOR ANY INFERENCE DRAWN OR DECISION MADE IN CONNECTION WITH THE USE OF THIS RECORDED-DATA.

## Contents

1. Header
2. Disclaimer
3. Contents
4. Run 5
  - 4.1 Software Version
  - 4.2 Pass Summary
  - 4.3 Log ( GVR TEST )
  - 4.4 Parameter Listing
5. Tail

# Run 5

## Software Version

|                           |   |                                   |                         |
|---------------------------|---|-----------------------------------|-------------------------|
| <b>Acquisition System</b> |   | <b>Version</b>                    |                         |
| MaxWell                   |   | 1.2.8702.0                        |                         |
| Application Patch         |   | APL-SPC-DnMSuperKit-1.2.8702.1000 |                         |
| <b>Computation</b>        | <b>Description</b>  | <b>Version</b>                    |                         |
| RAB6GR                    | RAB6 Gamma Ray Computation Package for both Real-time and Recorded Mode   | 1.2.8702.0                        |                         |
| RAB6Res                   | RAB6 Resistivity Computation Package for both Real-time and Recorded Mode | 1.2.8702.0                        |                         |
| <b>Tool Elements</b>      | <b>Description</b>  | <b>Software Version</b>           | <b>Firmware Version</b> |
| RBEC                      | Electronics Chassis Assembly for RAB6-C                                   | 1.2.8702.0                        | V6.2B                   |
| DRILLING_SURFACE          | DRILLING_SURFACE  | 1.2.8702.0                        |                         |

## Pass Summary

| Run Name | Pass Objective | Direction | Top       | Bottom    | Acquisition Start Date | Acquisition Start Time |
|----------|----------------|-----------|-----------|-----------|------------------------|------------------------|
| Run 5    | Drilling       | Down      | 3429.74 m | 3537.10 m | 02-Aug-2009            | 14:21:58               |

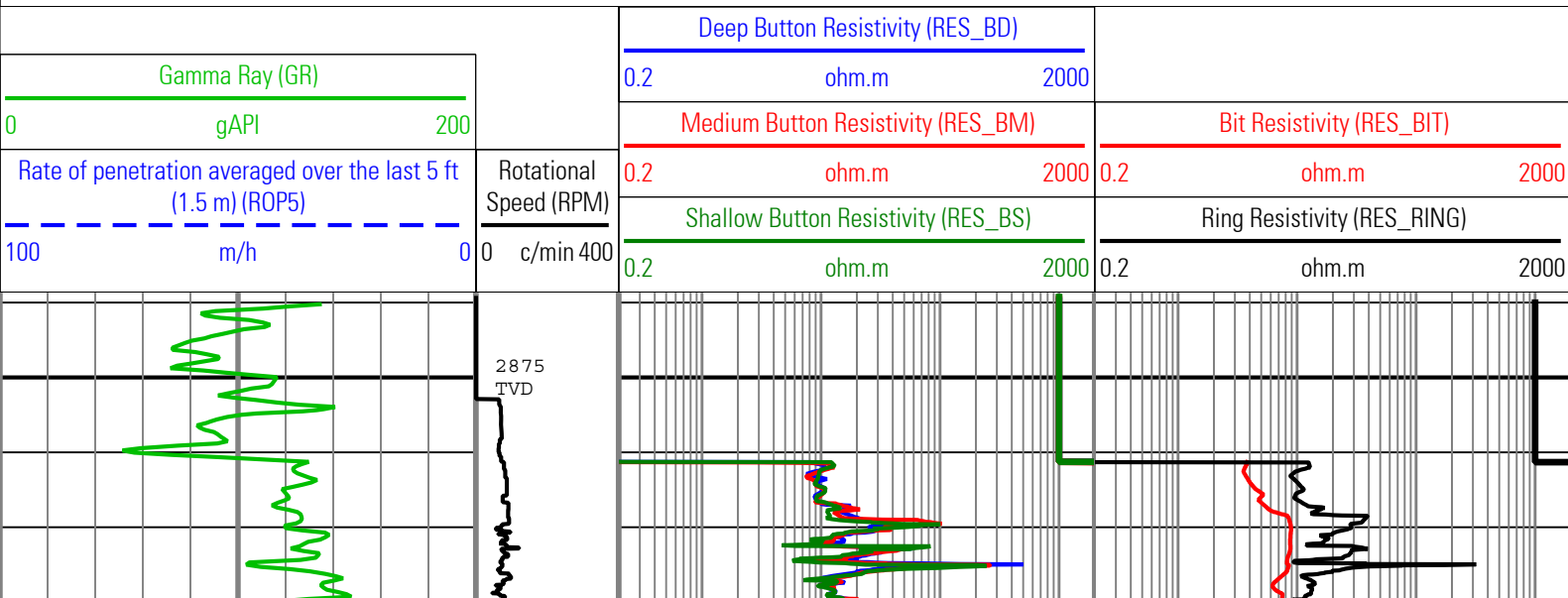
All depths are referenced to toolstring zero

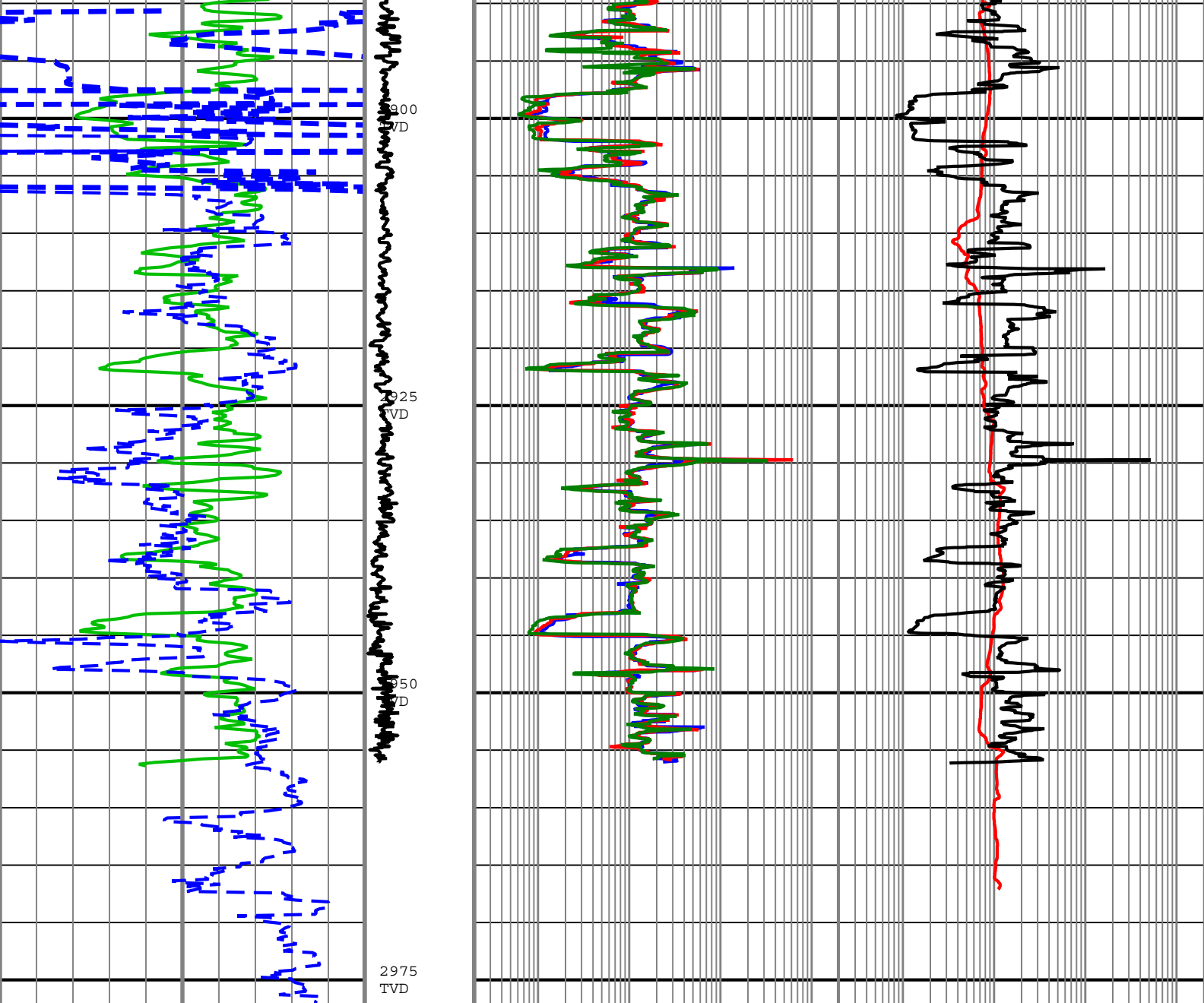
## Log

Run 5: Drilling 5F433598-0B50-4001-96C1-D96706CD650C

Description: RAB Resistivity Depth Log Format: Log ( GVR TEST ) Index Scale: 1:500 Index Unit: m Index Type: TVD Creation Date: 04-Aug-2009 02:05:04

|          |                  |          |
|----------|------------------|----------|
| GR       | RAB6:RAB6:RBEC   | 6in - RM |
| RES_BD   | RAB6:RAB6:RBEC   | 1in - RM |
| RES_BIT  | RAB6:RAB6:RBEC   | 1in - RM |
| RES_BM   | RAB6:RAB6:RBEC   | 1in - RM |
| RES_BS   | RAB6:RAB6:RBEC   | 1in - RM |
| RES_RING | RAB6:RAB6:RBEC   | 1in - RM |
| ROP5     | DRILLING_SURFACE | 6in - RT |
| RPM      | RAB6:RAB6        | 1in - RM |





|  |  |  |  |
|--|--|--|--|
| <p>Gamma Ray (GR)</p> <p>0 gAPI 200</p> <p>Rate of penetration averaged over the last 5 ft (1.5 m) (ROP5)</p> <p>100 m/h 0</p> | <p>Rotational Speed (RPM)</p> <p>0 c/min 400</p> | <p>Deep Button Resistivity (RES_BD)</p> <p>0.2 ohm.m 2000</p>    | <p>Bit Resistivity (RES_BIT)</p> <p>0.2 ohm.m 2000</p>   |
|  |  | <p>Medium Button Resistivity (RES_BM)</p> <p>0.2 ohm.m 2000</p>  | <p>Ring Resistivity (RES_RING)</p> <p>0.2 ohm.m 2000</p> |
|  |  | <p>Shallow Button Resistivity (RES_BS)</p> <p>0.2 ohm.m 2000</p> |  |

Description: RAB Resistivity Depth Log Format: Log ( GVR TEST ) Index Scale: 1:500 Index Unit: m Index Type: TVD Creation Date: 04-Aug-2009 02:05:04

| Channel Processing Parameters |  |            |                       |         |
|-------------------------------|--|------------|-----------------------|---------|
| Parameter                     | Description                            | ToolPath   | Value                 | Unit    |
| BHK                           | Drilling Fluid Potassium Concentration | Borehole   | 4.99                  | %       |
| BHT                           | Bottom Hole Temperature                | Borehole   | 39                    | degC    |
| BS                            | Bit Size                               | COMPLETION | 8.5                   | in      |
| DFD                           | Drilling Fluid Density                 | Borehole   | 9.4                   | lbm/gal |
| DFT                           | Drilling Fluid Type                    | Borehole   | Water                 |         |
| GGRD                          | Geothermal Gradient                    | Borehole   | 18.23                 | degC/km |
| GRSE                          | Generalized Mud Resistivity Selection  | Borehole   | Computed (GEN-9)      |         |
| GTSE                          | Generalized Temperature Selection      | Borehole   | Gradient From Surface |         |
| MST                           | Mud Sample Temperature                 | Borehole   | 21                    | degC    |

|              |                           |                |       |       |
|--------------|---------------------------|----------------|-------|-------|
| MOI          | Mud Sample Temperature    | Borehole       | 21    | degC  |
| RMS          | Resistivity of Mud Sample | Borehole       | 0.099 | ohm.m |
| SHT          | Surface Hole Temperature  | Borehole       | 20    | degC  |
| TD           | Total Measured Depth      | Borehole       | 4000  | m     |
| TEMP_SEL_RAB | RAB Temperature Selection | RAB6:RAB6:RBEC | Tool  |       |

## Tool Control Parameters

| Parameter | Description  | ToolPath    | Value | Unit |
|-----------|--|-------------|-------|------|
| OFFBTM_TH | Threshold for deciding whether the bit is off bottom | DnMWorkflow | 0.55  | m    |

**Company:** ROC Oil

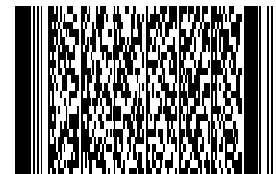
**Well:** Basker-7

**Field:** Gippsland Basin

**Rig Name:** Ocean Patriot

**State:** Victoria

**Country:** AUSTRALIA



**Schlumberger**

geoVISION Resistivity  
1:500 True Vertical Depth  
Recorded Mode Data