

# Schlumberger

geoVISION Resistivity  
1:500 True Vertical Depth  
Recorded Mode Data

Company: ROC Oil

Well: Basker-7

Field: Gippsland Basin

Rig Name: Ocean Patriot

State: Victoria

Country: AUSTRALIA

Latitude: 38° 17' 58.78" S

Longitude: 148° 42' 22.31" E

Block:

FL: VIC/L26

FL1:

FL2:

Custom: 09ASQ0007

Rig Name: Ocean Patriot

Rig Type: Semi-Submersible

Log Measured From - Drill Floor: 21.5 m  
Permanent Datum - Mean Sea Level



Casing Flange: 152.7 m

Ground Level: 154.2 m

Acquisition Dates: 31 Jul 09 to 02 Aug 09

Print Interval: 2465.0(m) to 2905.5(m)

Index Types: True Vertical Depth

Index Scales: 1:500

Depth Source: Driller's Depth

Depth Sensor: DES

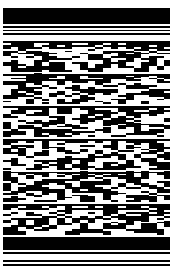
Conveyance: Drill Pipe

Print Type: Field

Spud Date:

Other Services:

Directional Surveys



## Disclaimer

THE USE OF AND RELIANCE UPON THIS RECORDED-DATA BY THE HEREIN NAMED COMPANY (AND ANY OF ITS AFFILIATES, PARTNERS, REPRESENTATIVES, AGENTS, CONSULTANTS AND EMPLOYEES) IS SUBJECT TO THE TERMS AND CONDITIONS AGREED UPON BETWEEN SCHLUMBERGER AND THE COMPANY, INCLUDING: (a) RESTRICTIONS ON USE OF THE RECORDED-DATA; (b) DISCLAIMERS AND WAIVERS OF WARRANTIES AND REPRESENTATIONS REGARDING COMPANY'S USE AND RELIANCE UPON THE RECORDED-DATA; AND (c) CUSTOMER'S FULL AND SOLE RESPONSIBILITY FOR ANY INFERENCE DRAWN OR DECISION MADE IN CONNECTION WITH THE USE OF THIS RECORDED-DATA.

## Contents

1. Header
2. Disclaimer
3. Contents
4. Run 4
  - 4.1 Software Version
  - 4.2 Pass Summary
  - 4.3 Log ( GVR TEST )
  - 4.4 Parameter Listing
5. Tail

# Run 4

## Software Version

<b>Acquisition System</b>		<b>Version</b>	
MaxWell		1.2.8702.0	
Application Patch		APL-SPC-DnMSuperKit-1.2.8702.1000	
<b>Computation</b>	<b>Description</b>	<b>Version</b>	
RAB6GR	RAB6 Gamma Ray Computation Package for both Real-time and Recorded Mode	1.2.8702.0	
RAB6Res	RAB6 Resistivity Computation Package for both Real-time and Recorded Mode	1.2.8702.0	
<b>Tool Elements</b>	<b>Description</b>	<b>Software Version</b>	<b>Firmware Version</b>
RBEC	Electronics Chassis Assembly for RAB6-C	1.2.8702.0	V6.2B
DRILLING_SURFACE	DRILLING_SURFACE	1.2.8702.0	

## Pass Summary

Run Name	Pass Objective	Direction	Top	Bottom	Acquisition Start Date	Acquisition Start Time
Run 4	Drilling	Down	2849.80 m	3448.79 m	31-Jul-2009	23:29:56

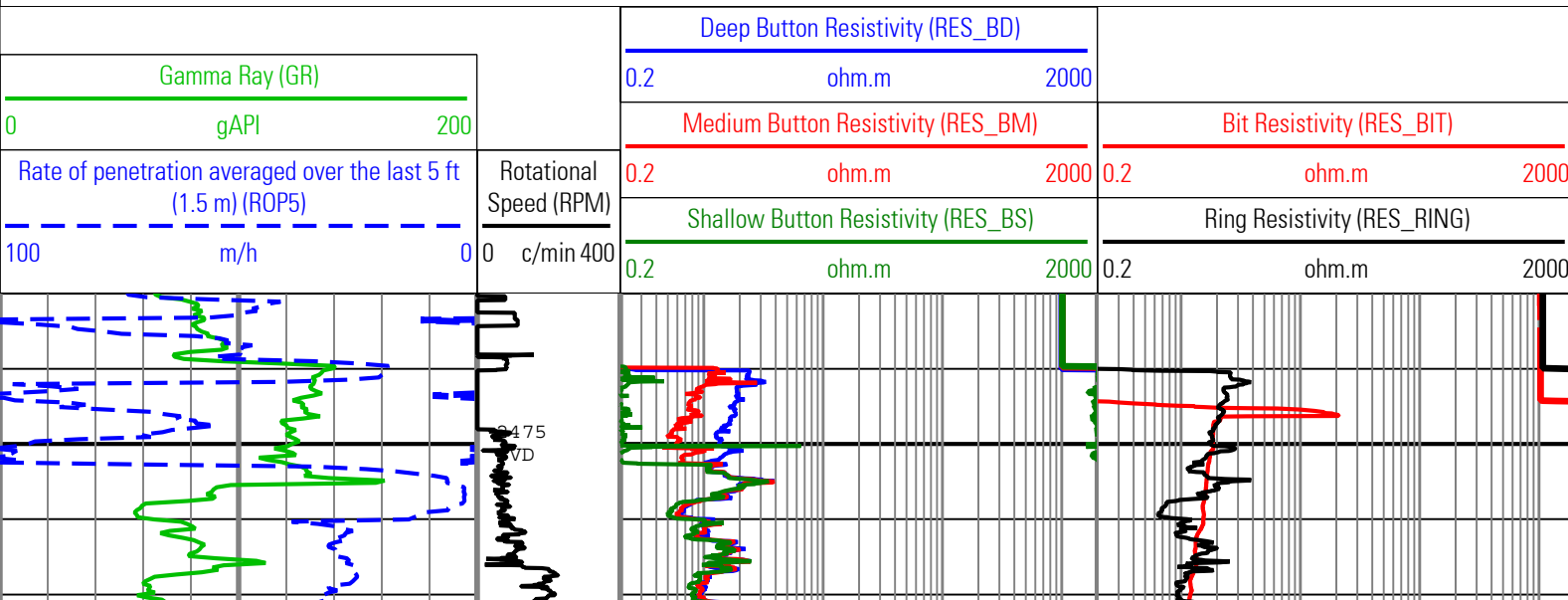
All depths are referenced to toolstring zero

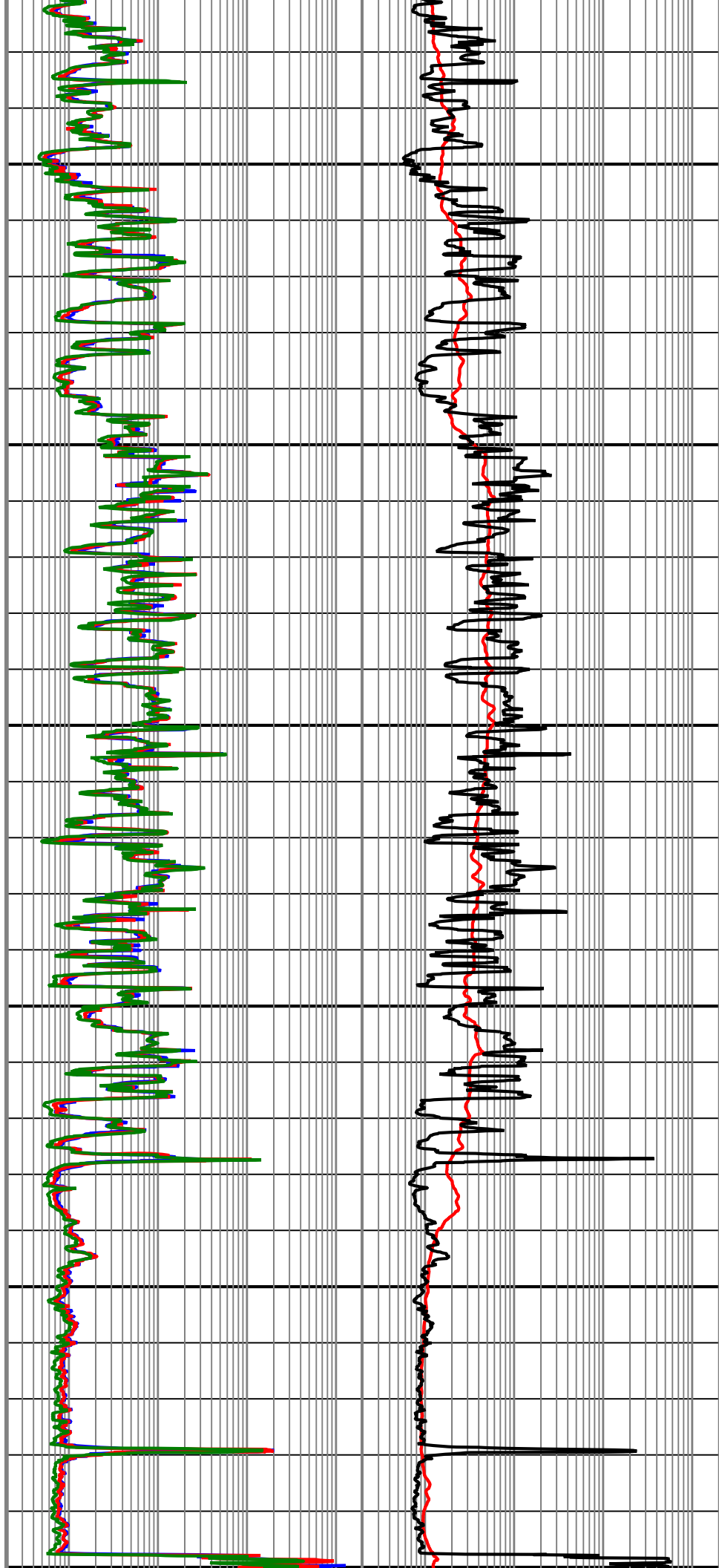
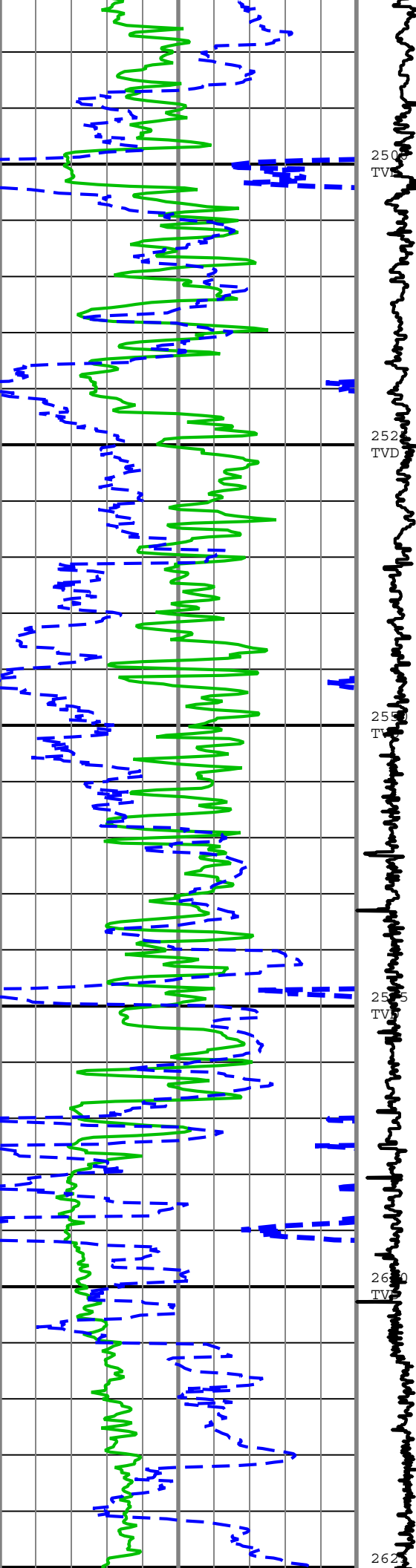
## Log

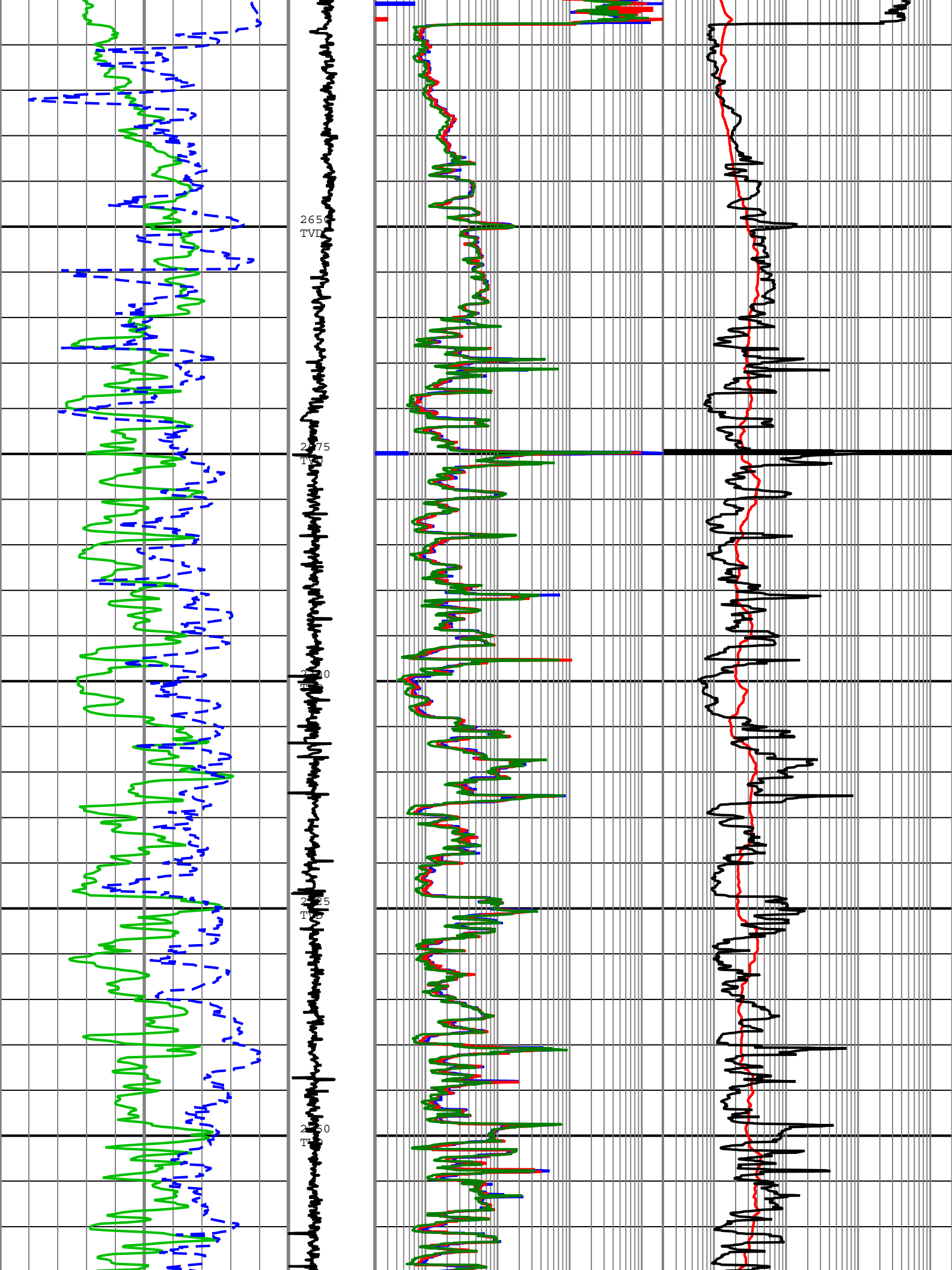
Run 4: Drilling CB9D128D-0CB1-49AC-806F-ACE33A814484

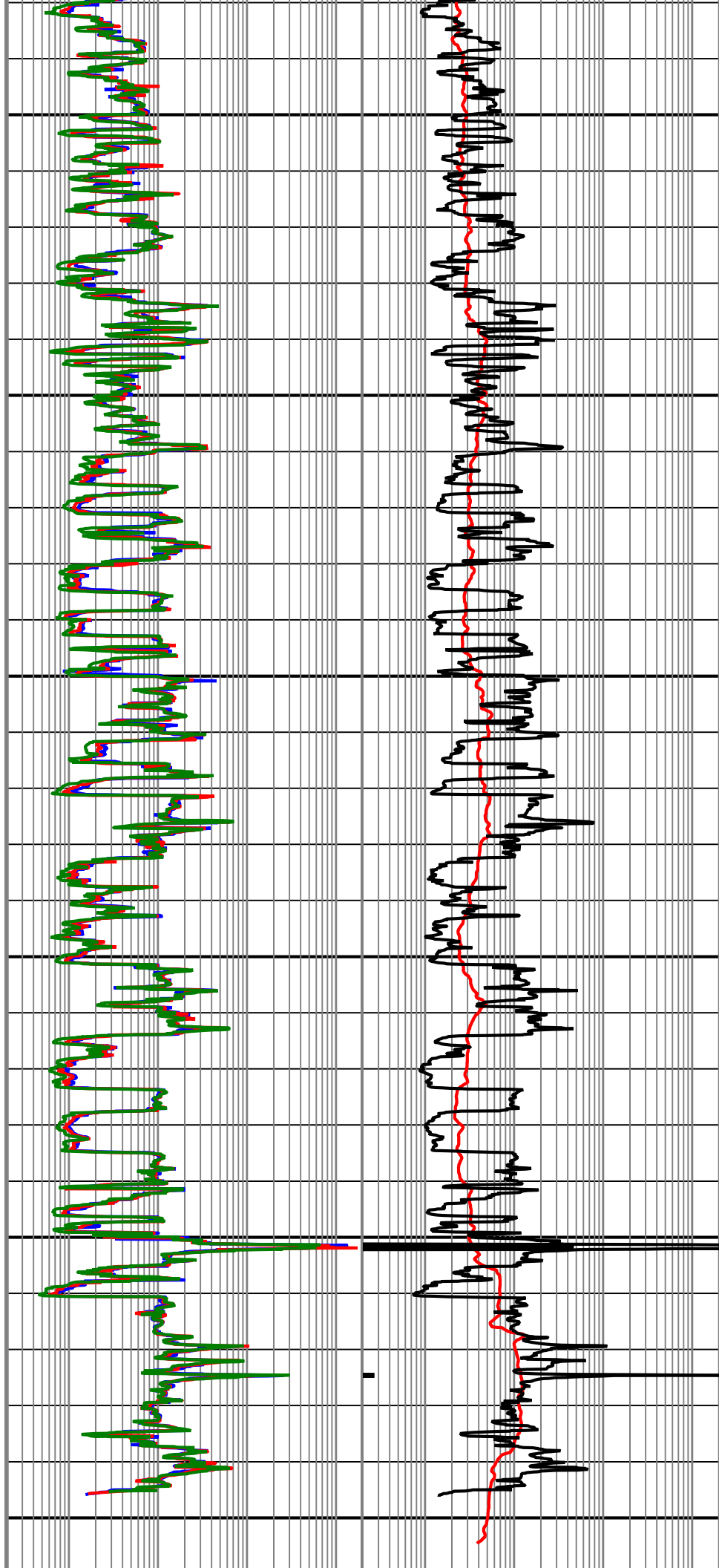
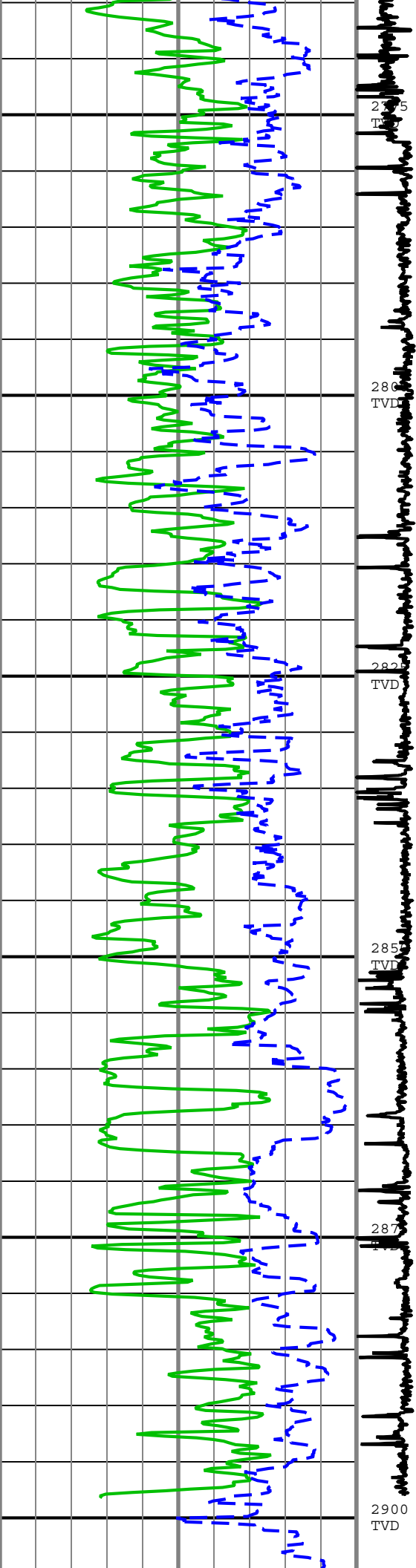
Description: RAB Resistivity Depth Log Format: Log ( GVR TEST ) Index Scale: 1:500 Index Unit: m Index Type: TVD Creation Date: 02-Aug-2009 23:28:15

GR	RAB6:RAB6:RBEC	6in - RM
RES_BD	RAB6:RAB6:RBEC	1in - RM
RES_BIT	RAB6:RAB6:RBEC	1in - RM
RES_BM	RAB6:RAB6:RBEC	1in - RM
RES_BS	RAB6:RAB6:RBEC	1in - RM
RES_RING	RAB6:RAB6:RBEC	1in - RM
ROP5	DRILLING_SURFACE	6in - RT
RPM	RAB6:RAB6	1in - RM









Gamma Ray (GR)	Rotational Speed (RPM)	Deep Button Resistivity (RES_BD)	Bit Resistivity (RES_BIT)
0 gAPI 200	0 c/min 400	0.2 ohm.m 2000	0.2 ohm.m 2000
Rate of penetration averaged over the last 5 ft (1.5 m) (ROP5)		Medium Button Resistivity (RES_BM)	Ring Resistivity (RES_RING)
100 m/h 0		0.2 ohm.m 2000	0.2 ohm.m 2000
		Shallow Button Resistivity (RES_BS)	
		0.2 ohm.m 2000	

Description: RAB Resistivity Depth Log Format: Log ( GVR TEST ) Index Scale: 1:500 Index Unit: m Index Type: TVD Creation Date: 02-Aug-2009 23:28:15

## Channel Processing Parameters

Parameter	Description	ToolPath	Value	Unit
BHK	Drilling Fluid Potassium Concentration	Borehole	Time Zoned	%
BHT	Bottom Hole Temperature	Borehole	39	degC
BS	Bit Size	COMPLETION	Depth Zoned	in
DFD	Drilling Fluid Density	Borehole	Time Zoned	lbm/gal
DFT	Drilling Fluid Type	Borehole	Water	
GGRD	Geothermal Gradient	Borehole	18.23	degC/km
GRSE	Generalized Mud Resistivity Selection	Borehole	Computed (GEN-9)	
GTSE	Generalized Temperature Selection	Borehole	Gradient From Surface	
MST	Mud Sample Temperature	Borehole	21	degC
RMS	Resistivity of Mud Sample	Borehole	0.099	ohm.m
SHT	Surface Hole Temperature	Borehole	20	degC
TD	Total Measured Depth	Borehole	4000	m
TEMP_SEL_RAB	RAB Temperature Selection	RAB6:RAB6:RBEC	Tool	

## Depth Zone Parameters

Parameter	Value	Start ( m )	Stop ( m )
BS	12.25	2465	2475.85
BS	8.5	2475.85	2905.51

All depth are actual.

## Time Zone Parameters

Parameter	Value	Start Time	Stop Time	Start Depth ( m )	Stop Depth ( m )
BHK	4.94	31-Jul-2009 23:29:56	02-Aug-2009 02:54:07	2849.8	2870.41
BHK	4.99	02-Aug-2009 02:54:07	02-Aug-2009 10:31:50	2870.41	3448.79
DFD	9.55	31-Jul-2009 23:29:56	02-Aug-2009 02:51:38	2849.8	2869.45
DFD	9.4	02-Aug-2009 02:51:38	02-Aug-2009 10:31:50	2869.45	3448.79

All depth are at tool zero.

## Tool Control Parameters

Parameter	Description	ToolPath	Value	Unit
OFFBTM_TH	Threshold for deciding whether the bit is off bottom		0.55	m

**Company:** ROC Oil

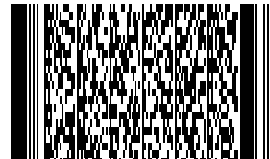
**Well:** Basker-7

**Field:** Gippsland Basin

**Rig Name:** Ocean Patriot

**State:** Victoria

**Country:** AUSTRALIA





**Schlumberger**

geoVISION Resistivity  
1:500 True Vertical Depth  
Recorded Mode Data