



FORMATION EVALUATION LOG



WELL : BASKER-4

FROM (m): 2150 TO (m): 3050 SCALE: 1/ 500

Country : AUSTRALIA	Latitude : 38°18'02.17"S	HOLE / CASING INFO 17 1/2" Hole to (mMDRT) : 1010m	Spud Date : 27-02-2006
Basin : GIPPSLAND	Longitude : 148°41'43.23"E	12 1/4" Hole to (mMDRT) : xxxx	Total Depth Date : xx-xx-2006
Field : BASKER	UTM Co-ord X (m E) : 649256.8	13 3/8" Shoe at (mMDRT) : 998.85m	Total Depth (mRT) : m
Permit : VIC/L26	UTM Co-ord Y (m N) : 5759552.0	9 5/8" Shoe at (mMDRT) : xxxx.xm	T.V.D. (mSS MSL) : m
Well Type : DEVELOPMENT	RT-LAT (m) : 21.5		Status : COMPLETED
Rig Name : OCEAN PATRIOT	RT-Seabed (m) : 176		

ABBREVIATIONS

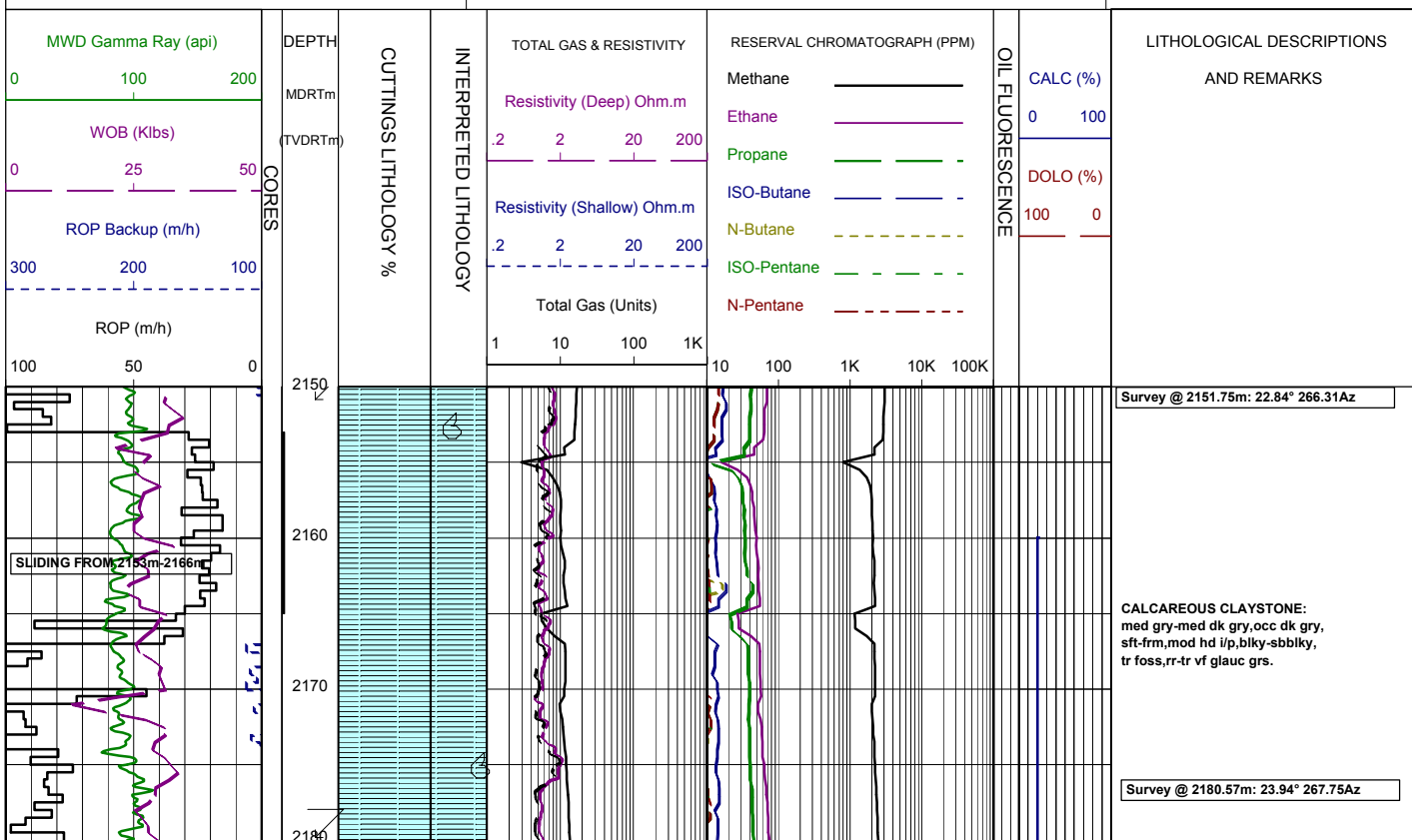
MW MUD WEIGHT	NB NEW BIT
FV FUNNEL VISCOSITY	RR RERUN BIT
PV PLASTIC VISCOSITY	CB CORE BIT
YP YIELD POINT	WOB WEIGHT ON BIT
FC FILTER CAKE	RPM REVS PER MINUTE
SOL SOLIDS	FLC FLOW CHECK
WL FILTRATE	CR CIRCULATE RETURNS
SD SAND - %	PR POOR RETURNS
S SALINITY - PPM	NR NO RETURNS
RM MUD RESISTIVITY	BG BACKGROUND GAS
RMF MUD FILTRATE	TG TRIP GAS
C CARBIDE TEST	STG SHORT TRIP GAS
LAT LOGGED AFTER TRIP	CG CONNECTION GAS
DS DEVIATION SURVEY	SG SWAB GAS
	SVG SURVEY GAS

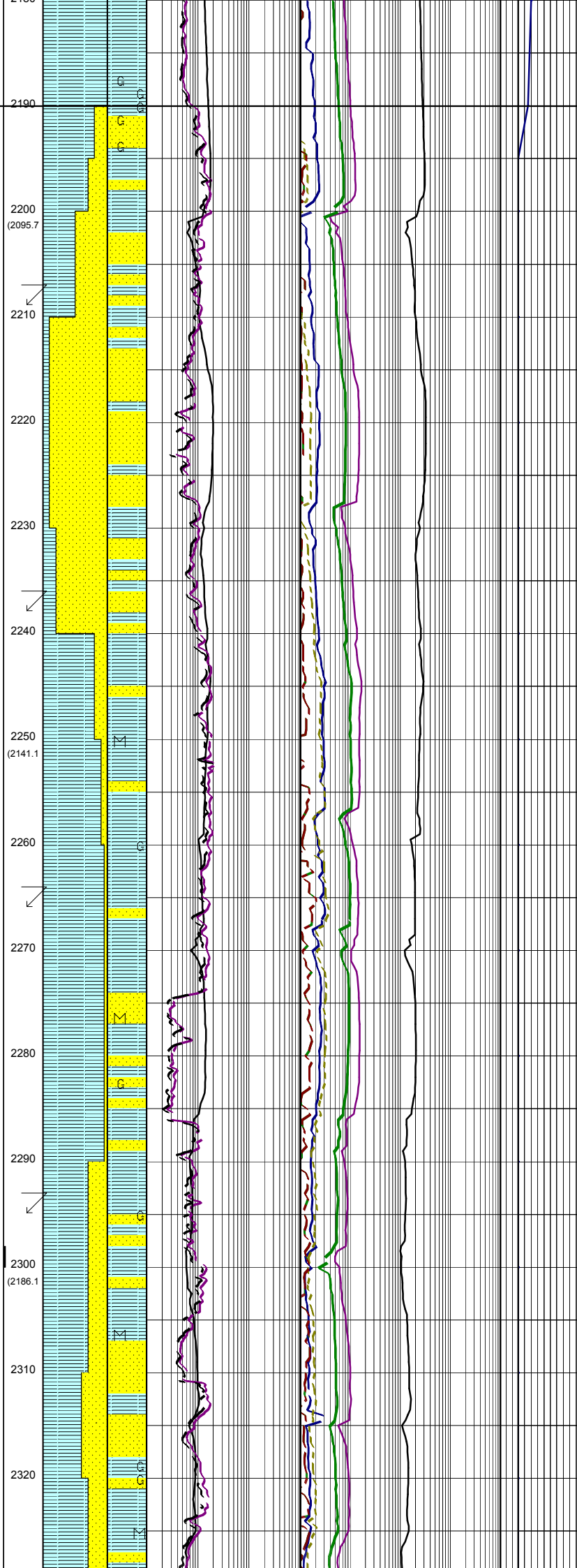
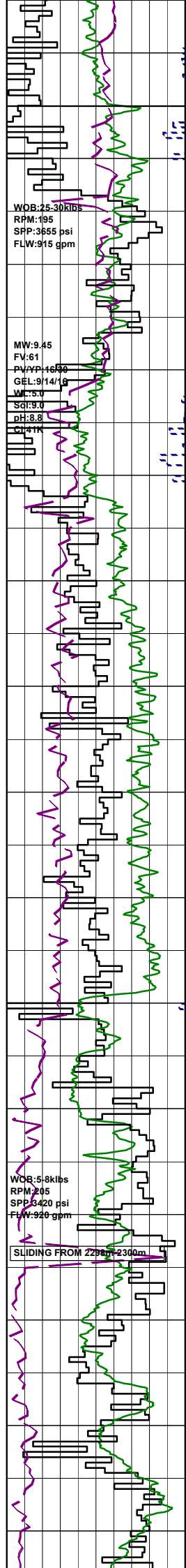
LITHOLOGY LEGEND

	Claystone		Limestone		Brachiopoda
	Siltstone		Dolomite		Cement
	ar. Silt ar		Coal		Sponges
	Fine SST		Gypsum		Glauconite
	Medium SST		Lithic Fragment		Pyrite
	Coarse SST		Foraminifera		Iron Minerals
	Marl		Fossils		Mica
	Clay, Limestone		Bryozoa		Carb Fragments

ENGINEERING LEGEND

	Shoe		FIT
	Mud loss		Mud gain
	Deviation survey		
	DST		
	Test		
	Sidewall Core		
	Core		
	DOLOMITE ALPHABE		
	RFT		





CALCAREOUS CLAYSTONE:
med-med dk gry, occ grn gry,
com glauc, tr carb spks,
tr iron stn, frm-mod hd, sb blkly.

LATROBE FM
2190m MD (2086.7m TVD)

SANDSTONE:
clr-yel brn, f-med crs grs,
pred sbrnd, pr-mod srtd, appears
cln, qtz grs iron stained where
yel brn, lse-disagg, com glauc
very top

Survey @ 2209.36m: 24.32° 268.28Az

SANDSTONE:
clr-trnsi, occ grnsh wh, f-grs,
dom med-lwr crs, pred sbrnd, pr-
mod srtd, rr mica, rr carb, loose/
disaggs, v gd inf por, no shows.

Survey @ 2238.12m: 25.23° 268.19Az

CLAYSTONE: olv gry-brn gry,
sly, tr glauc, tr mica, tr calc,
v/sft-sft, sb blkly.

SANDSTONE:
trnsi-dk yel orng, occ pl grn,
v/f-med grs, pr srtd, sbang-sbrnd,
arg mtx, mod hd, pr inf por.

Survey @ 2266.76m: 25.65° 268.18Az

CLAYSTONE: olv gry-med gry,
occ wh gry, tr-com pyr nod,
tr-com glauc, rr-tr mica, v/sft-sft,
sb blkly.

SANDSTONE:
trnsi-dk yel orng, occ pl grn,
v/f-med grs, pr srtd, sbang-sbrnd,
arg mtx, mod hd, pr inf por.

Survey @ 2295.23m: 26.09° 267.23Az

CLAYSTONE: olv gry-med gry,
occ wh gry, tr-com pyr nod,
tr-com glauc, rr-tr mica, v/sft-sft,
sb blkly.

SANDSTONE:
trnsi-dk yel orng, occ pl grn,
v/f-med grs, pr srtd, sbang-sbrnd,
arg mtx, mod hd, pr inf por.

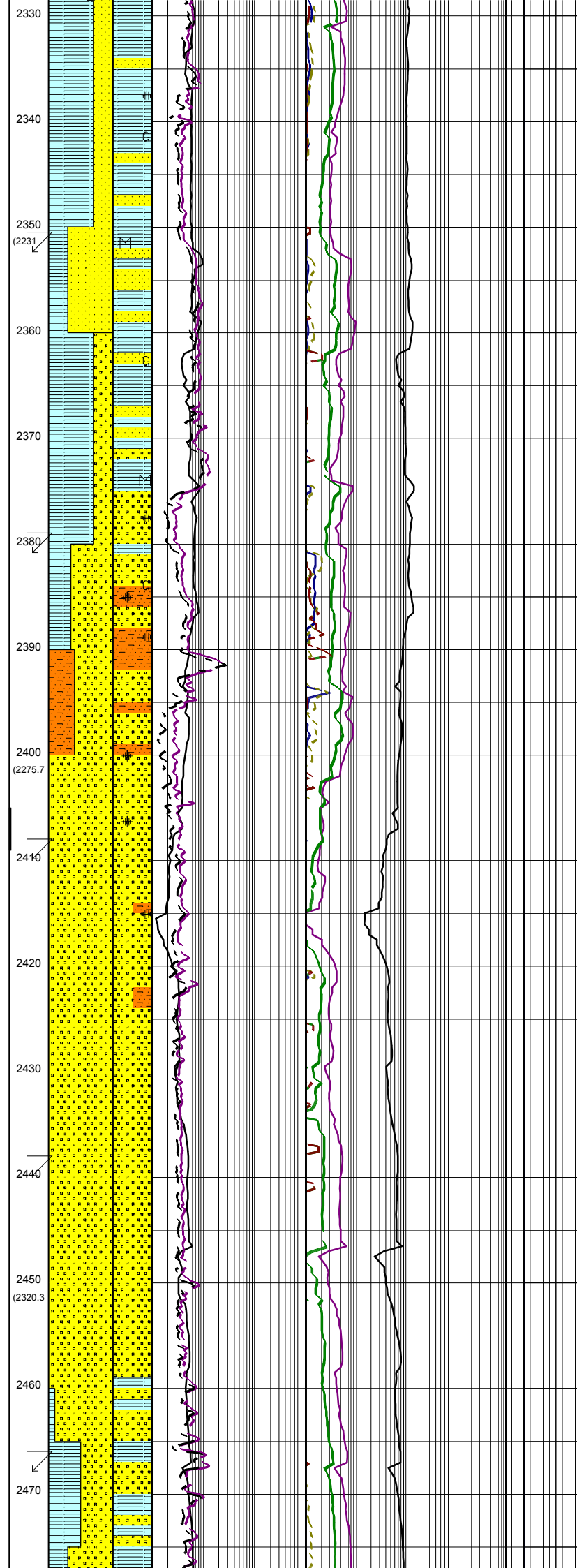
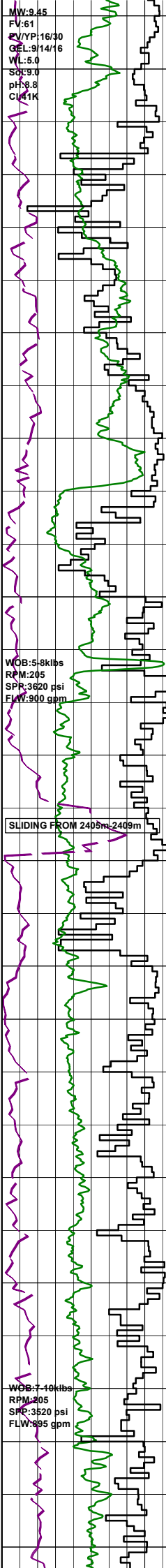
Survey @ 2323.86m: 26.23° 267.68Az

MW: 9.45
 FV: 61
 Y/YP: 16/30
 GEL: 9/14/16
 WL: 5.0
 Sp: 9.0
 pH: 8.8
 CL: 41K

WOB: 5.8klbs
 RPM: 205
 SPR: 3620 psi
 FLW: 900 gpm

SLIDING FROM 2405m-2409m

WOB: 7.4klbs
 RPM: 205
 SPR: 3520 psi
 FLW: 895 gpm



CLAYSTONE: olv gry-med gry,
 occ wh gry, tr-com pyr nod,
 tr-com glauc, rr-tr mica, v/sft-sft,
 sb blkly.

SANDSTONE: dk ley org, occ pl grn,
 rr mod pnk, v/f-med grs, pr srtd,
 sbang-sbrnd, arg mtx, pr inf por.

Survey @ 2352.61m: 26.53° 267.73Az

CLAYSTONE: pred med gry, occ wh gry,
 tr glauc, tr mica, v/sft-sft,
 sb blkly.

SANDSTONE: dk ley org, occ pl grn,
 rr mod pnk, v/f-med grs, pr srtd,
 sbang-sbrnd, arg mtx, pr inf por.

Survey @ 2381.60m: 26.79° 267.15Az

SILTSTONE: gry brn-olv gry,
 occ wh-yel gry, occ v/carb,
 tr carb spks, tr pyr, 10% arg,
 sft-sb fiss, sb blkly.

SANDSTONE: clr-frstd, tr dk yel brn,
 med-v/crs, abdt pell, com pyr cmt,
 occ hd pyr cmt, pr srtd, gd inf por.

Survey @ 2410.64m: 26.70° 266.45Az

SANDSTONE: clr-frstd, tr dk yel brn,
 med-v/crs, abdt pell, tr pyr cmt,
 occ hd pyr cmt, pr srtd, gd inf por.

Survey @ 2439.34m: 26.90° 266.47Az

SANDSTONE: clr-frstd, tr dk yel brn,
 med-crs, occ v crs, tr pyr cmt,
 occ hd pyr cmt, pr srtd, gd inf por.

Survey @ 2467.89m: 27.11° 266.39Az

CLAYSTONE: lt med gry brn-brn,
 vsft-sft, disp, sity-sndy, tr mica,
 rr vf glauc.

SANDSTONE:clr-trmsl,m-crs,occ v
v crs,sbrnd-sbang,pred sbrnd,m-w
srd,lr mica,lr pyr cmt,occ hd,
gd inf por.

Survey @ 2496.64m: 27.60° 266.02Az

SANDSTONE:clr-trmsl,m-crs,occ v
f-v crs,sbrnd-sbang,pred sbrnd,
m-w srd,lr mica,lr pyr cmt,gd-
v gd inf por.

Survey @ 2525.16m: 27.72° 265.68Az

CLAYSTONE:lt brn gry-lt gry,occ
med dk gry,slt,disp,f-med qtz
grs,lr carb spks,n calc,g/t arg
Sandstone i/p.

Survey @ 2553.57m: 28.03° 265.54Az

CLAYSTONE:lt brn gry-lt gry,occ
med gry-dk gry,slt,disp,pred silty,
lr f qtz grs,lr carb spks,g/t sandy
Claystone and arg Sandstone i/p.

Survey @ 2582.45m: 28.18° 266.17Az

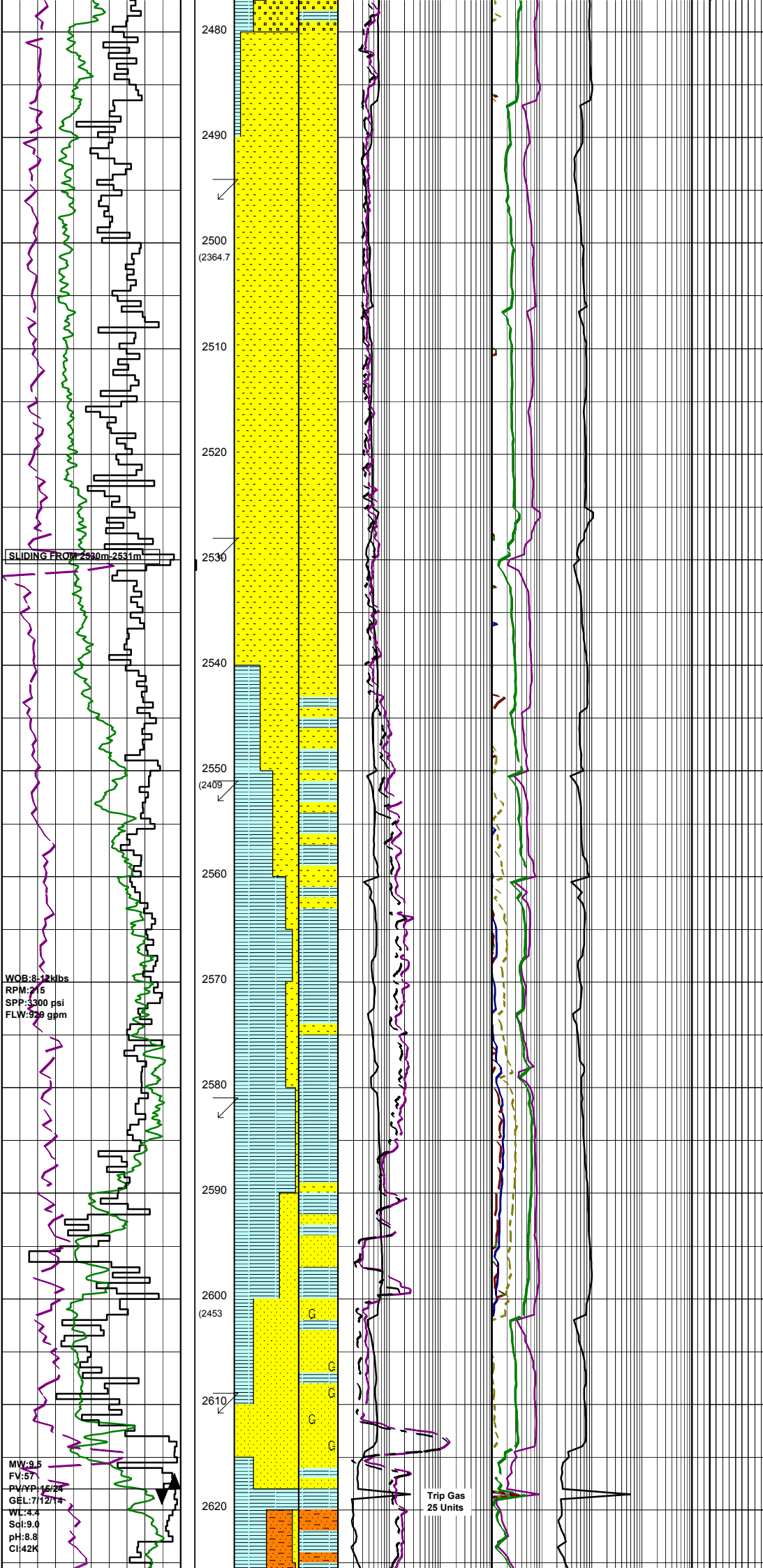
CLAYSTONE:lt brn gry-lt gry,occ
med gry-dk gry,slt,disp,pred silty-
sndy,lr f qtz grs,lr carb spks,
g/t sandy Claystone and arg
Sandstone i/p.

Survey @ 2611.79m: 28.71° 266.08Az

SANDSTONE:olv gry-brn gry,vf-crs,
pred f-med,sbrnd,10-30% cly,qtz
silt,gd tr-com glauc,loose-sft aggs,
lr carb spks,lr mica,gd inf por,
no shows.

POOH at 2618m reached 2130hrs
7th May to change BHA for
directional,and p/up new bit.

BIT #3RR2:Reed Hycalog RSX616M
SIZE:311mm 12.25"
JETS:3x16,3x20
IN:2618m OUT:2645m
RUN:27m HRS:9.9



SLIDING FROM 2580m-2531m

WOB:8.12kbs
RPM:215
SPP:3300 psi
FLW:929 gpm

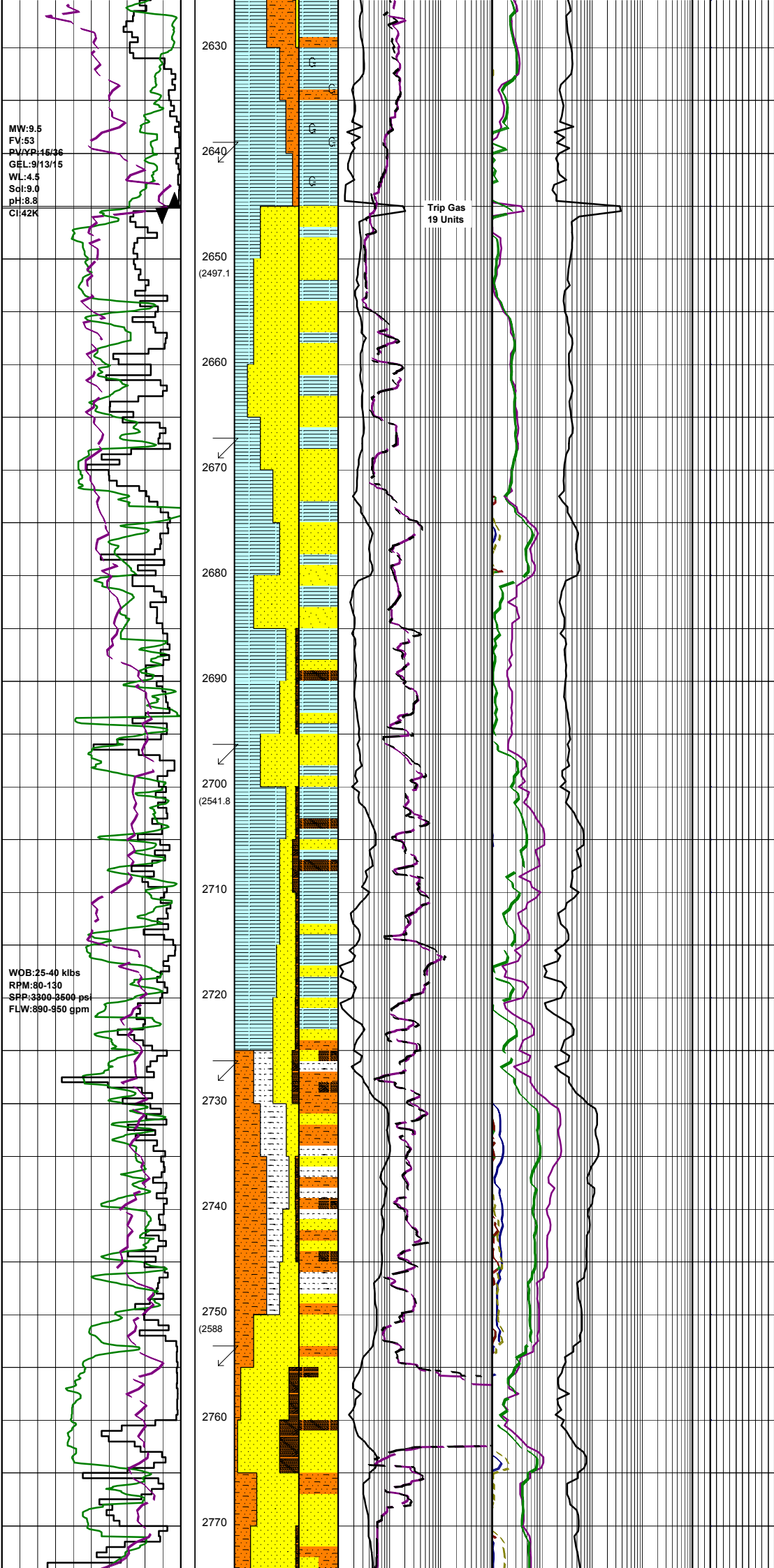
MW:9.5
FV:57
PV/AP:16/7
GEL:7/12/14
WL:4.4
Sol:9.0
pH:8.8
Cl:42K

Trip Gas
25 Units

COND: 1-3-CT-H-X-IN-LT-PR

MW:9.5
FV:53
PV/VP:16/36
GEL:9/13/15
WL:4.5
Scl:9.0
pH:8.8
Cl:42K

WOB:25-40 klbs
RPM:80-130
SRP:3000-3600 psi
FLW:690-950 gpm



GLAUCONITIC CLAYSTONE:med-
dk grn gry,-grn gry,sft-v
sft,disp,com-abdt glauc,tr
mica,non calc.

SILTSTONE:brn gry-dk brn gry,
grnsh tinge i/p,sft,mod hd
i/p,non calc,tr glauc grs.

Survey @ 2640.94m: 27.83° 265.83Az

POOH at 2645m reached 1800hrs
9th May to change bit.

BIT#4: SMITH GF10BODVCPS
SIZE:311mm 12.25"
JETS:3x24,1x20
IN:2645m OUT:m
RUN:m HRS:
COND:

SANDSTONE:clr-trmsl,pred med-
crs,sbrnd-sbang,pred qtz grs,
lse,m-w,srtd,f-gd inf por.

Survey @ 2669.25m: 27.16° 265.59Az

CLAYSTONE:med brn gry-dk brn,
sft-frm,disp,tr carb mat,occ
carb lam,silty i/p,non calc.

SANDSTONE:lt-med brn gry,occ
med dk brn,arg,vf-med,pred
f-med,sbang,w srtd,10-40% silt
and clay,tr-com carb debris
micas as microlam,sft-fri aggs,
pr-fr vis por,no show,grdng i/p
to sandy Claystone.

Survey @ 2697.88m: 24.86° 266.02Az

COAL:blk,occ dk brn,mod hd-hd,
brit,sbconch,sbfiss frac,
subbitum-bitum.

CLAYSTONE:med brn gry-dk brn
gry,sft-frm,mod hd i/p,v carb,
rr-tr carb lam,non calc.g/t
Siltstone i/p.

Survey @ 2727.14m: 22.34° 267.37Az

ARGILLACEOUS SANDSTONE:
wh-lt gry,vf-f-tr med,
40% arg mtx,tr carb,sbang-sbrnd,
w/srtd,mod hd,pr-fr inf por.

SILTSTONE:lt-dk brn gry,
tr-com carb frags,com pry nod,
sft-hd,sbfis- sbbiky.

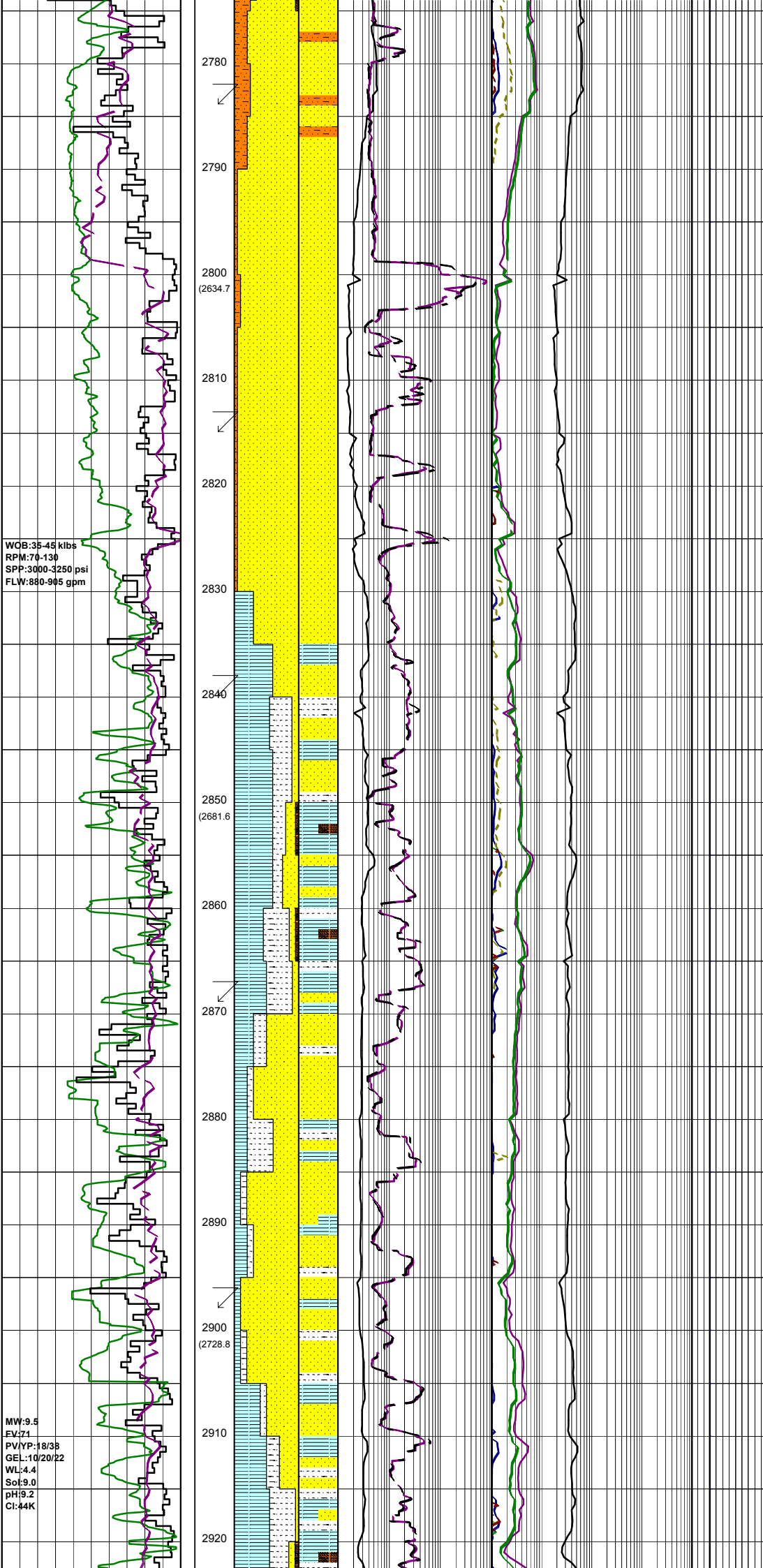
SANDSTONE:clr-trmsl,f-pred med,
tr carb,pr srtd,sbang-sbrnd,
lse grs,gd inf por,no fluor.

Survey @ 2755.41m: 20.81° 268.40Az

SANDSTONE:lt gry,tmsl,lse-
pred hd aggs,tr carb grs,rr
lith,f-med,sbrnd-sbang,w srtd,
tr pyr cmt,strg dol cmt,pr
vis por,com yel mnrl fluor.

CARBONACEOUS SILTSTONE:dk
brnsh gry,brnsh blk,sft-fri,
sbbiky,sbfiss arg i/p,nf Coal

ip, tr vf pyr grs.



WOB: 35-45 klbs
 RPM: 70-130
 SPP: 3000-3250 psi
 FLW: 880-905 gpm

MW: 9.5
 EV: 71
 PV: 18/38
 GEL: 10/20/22
 WL: 4.4
 Sol: 9.0
 pH: 9.2
 Cl: 44K

Survey @ 2784.09m: 20.58° 267.75Az

SANDSTONE: lt gry-gry wh, clr-trnsl, qtz, lse, med-crs, occ c-v crs, sbrnd-sbang, m srted, dol cmt, tr py, rrr-tr carb spk, fr inf por, tr min fluor,

SANDSTONE: a/a w/- disp hd-v hd, disp var sil-calc cmtd aggs, yel min fluor.

Survey @ 2813.43m: 20.73° 265.54Az

SANDSTONE: lt gry, com trnsl-clr, pred med-v crs, occ gran, occ f, pr srt, ang-sbrnd, com calc cmt, com off wh-wh slty mtz, com nod pyr, com glauc, qtz, tr chlor, mod hd-hd, pr vis por, gd inf por, com min fluor.

SILTY CLAYSTONE: lt-med olv gry-brn gry, dk brn i/p, sft-v sft, sbbkly, tr-gd tr carb mat & micas, non calc, g/t Siltstone and vf arg Sandstone.

Survey @ 2841.68m: 20.35° 264.62Az

COAL: blk, occ dk brn, mod hd-hd, brit, sbrnd, sbfiss frac, subbitum-bitum.

ARGILLACEOUS SANDSTONE: lt-med olv gry to lt-dk gry brn, vf-med, dom vf-f, w-v w srted, sbang-sbrnd, 10-40% cly, tr-sli carb mat & micas, sft-fri aggs, fr inf & vis por, no fluor.

Survey @ 2869.89m: 19.14° 264.86Az

SANDSTONE: clr-trnsl, pred med-crs, occ f-v crs, sbang-sbrnd, lse qtz, m-w srted, tr micas and carb, gd inf por, no fluor.

CLAYSTONE: lt-med olv gry-brn gry, dk brn i/p, sft-v sft, sbbkly, tr-sli carb mat & micas, non calc, g/t Siltstone and vf arg Sandstone.

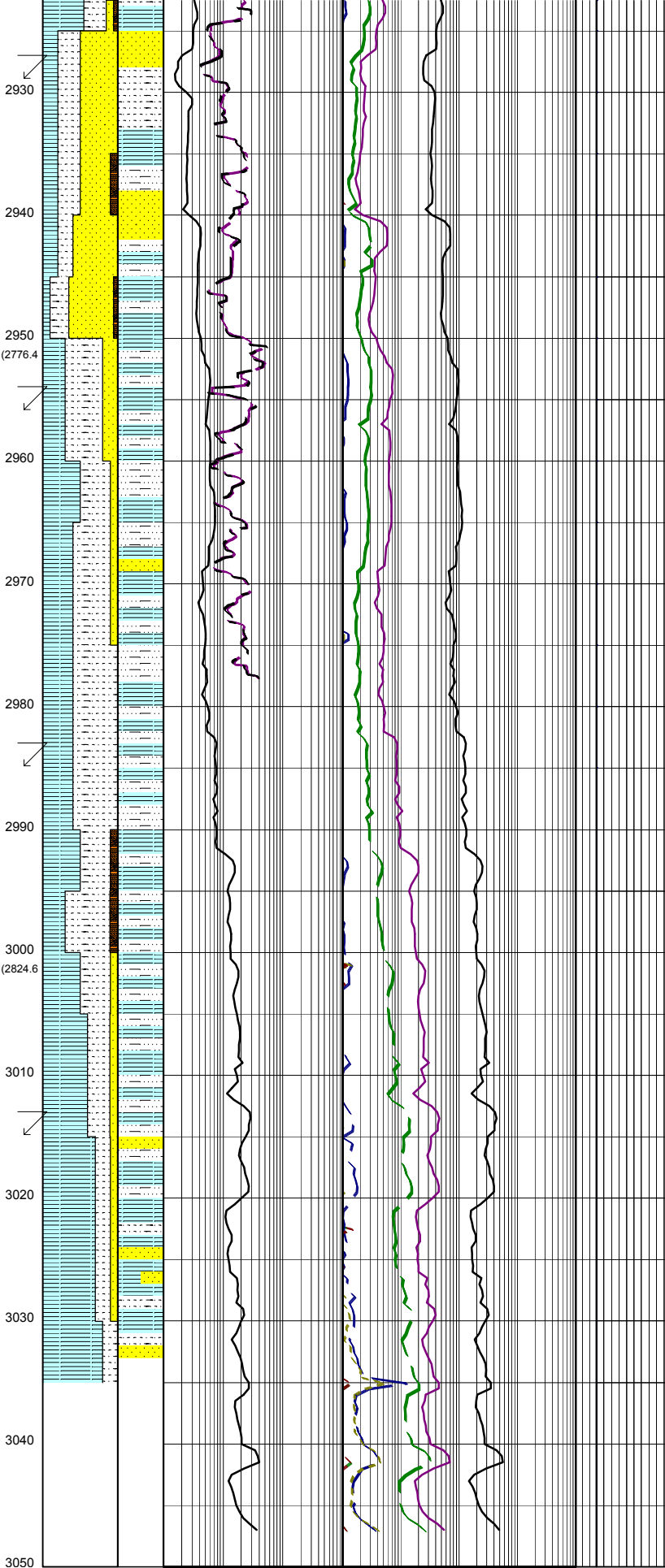
Survey @ 2898.59m: 18.93° 265.94Az

SANDSTONE: clr-trnsl, f-crs, pred med-crs, occ v crs, sbang-sbrnd, lse qtz, m-w srted, tr carb mat & mica, fr-gd inf & vis por, no fluor.

CLAYSTONE: lt-med olv gry-brn gry, dk brn i/p, sft-v sft, sbbkly, tr-sli carb mat & micas, occ carb lam, non calc, g/t Siltstone.

WOB:35-45 klbs
RPM:80-110
SPP:3260-3660 psi
FLW:880-905 gpm

WOB:40-44 klbs
RPM:92-110
SPP:3400-3450 psi
FLW:900-950 gpm



Survey @ 2927.63m: 17.73° 265.97Az

ARGILLACEOUS SANDSTONE:clr-trnsl, vf-f grs,sbang-sbrnd,tr off wh carb mtx,com nod & disseminated pyr,fr inf por, gd vis por,no fluor.

SANDSTONE:trnsl-clr,milky,med-crs, sbang-sbrnd,lse qtz gran,tr off wh carb mtx,com disseminated & nod pyr,gd inf por,gd vis por,no fluor.

Survey @ 2956.77m: 16.24° 266.55Az

CLAYSTONE:olv blk-brnsh blk-olv gry,occ carb,occ lam,sft-v sft, sbbiky-blky.

ARGILLACEOUS SANDSTONE:trnsl-clr,vf-f grs,sbrnd-sbang,occ off wh-wh carb-silty mtx,com nod & disseminated pyr,fr inf por,gd vis por, no fluor.

Survey @ 2984.81m: 15.17° 265.41Az

ARGILLACEOUS SANDSTONE:clr,pred vf-f,occ crs-med,mod wl srt,sbang-sbrnd,com silty-aren mtx,com nod & disseminated pyr,com mic,tr qtz,fri-mod hd, pr vis por,gd inf por,blky-amorph.

CLAYSTONE:olv gry-dk grnsh gry, olv blk,com pyr,com mic,com carb, v sft-sft,blky-amorph.

Survey @ 3013.54m: 13.08° 266.70Az

CLAYSTONE:olv gry,lt-med brnsh gry,olv blk,com pyr,carb spks,hd-v hd,occ sft-mod hd,sbfiss-sbbiky.

SAND:clr-trnsl,occ lt trnsl,yel, v crs-gran,qtz,lse grns.

CLAYSTONE:lt-dk brn gry,occ brnsh blk,sft-fm,sbbiky,v carb,occ lam, tr vf pyr,g/t arg Siltstone.