

# OLANGOLAH-1

Location: Onshore Otway Basin  
 Latitude: 38 40 20.71 S  
 Longitude: 143 38 53.40 E  
 Total Depth Drilled (KB) = 2302 m  
 Depth logged (KB) = 2154 m  
 KB Elevation = 454.3 m amsl  
 No Seismic line reference



Completed June 19, 1982 by Gas and Fuel Exploration  
 Status = Plugged & abandoned  
 Lithostratigraphy from Olangolah-1 WCR  
 Lithological interpretation by Natalia Liberman (20001)  
 Palynology by M.E.Dettmann  
 Produced by the Basin Studies Group 18-Jun-2001 for Enclosure 4, VIMP 70

## Lithological legend

Carbonate Lithotypes	Siliciclastic Lithotypes	Others
Limestone	Conglomerate	l'bedded sandstone & mudstone
Limestone, sandy	Sandstone, pebbly	Siltstone
Limestone, dolomitic	Sandstone	Mudstone (shale)
Dolomite	Sandstone, calcareous	Mudstone, calcareous
Dolomite, calcareous	Sandstone, argillaceous	Claystone
Marl	Sandstone, glauconitic	Coal
	"Greensand"	

## Accessory minerals legend

C - carbonaceous debris	trace	common
P - pyrite	minor	abundant
G - glauconite		
M - mica		

## Pristane/Phytane Legend

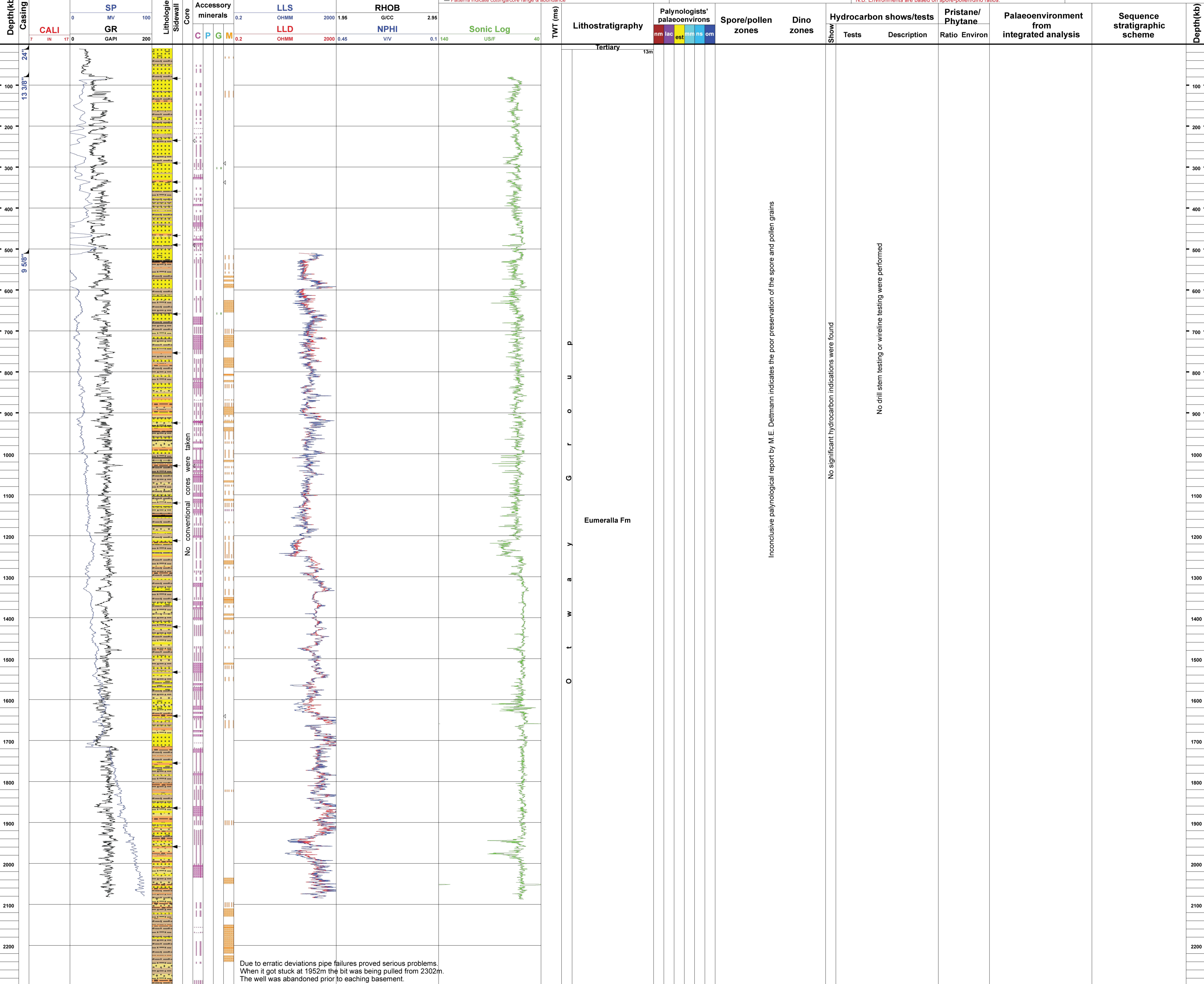
< 1.5 Anoxic - Subaqueous (lacustrine or marine)
1.5 - 3.0 Trans - Transitional environment
> 3.0 Oxidic - Subaerial environment

## Palynological scheme legend

SPORE-POLLEN:	DINOFAGELLATES:
T. be = T. bellus	W. th = W. thompsonae
P. tu = P. tuberculatus	C. in = C. incompositum
N. as = N. asperus	H. ta = H. tasmanense
P. as = P. asperopolus	D. he = D. heterophlyctia
M. di = M. diversus	A. hy = A. hyperacantha
L. ba = L. balmel	A. ho = A. homomorphom
F. lo = F. longus	E. cr = E. crassitabulata
T. li = T. lilliei	T. ev = T. evittii
N. se = N. senectus	P. py = P. pyrophorum
T. ap = T. apoxyxerius	M. di = M. diruggii
P. ma = P. mawsonii	I. ko = I. korolevense
H. un = H. uniforma (A. di = A. distocarinatus)	X. au = X. australis
P. pa = P. pannosus	N. ac = N. aceras
C. pa = C. paradoxa	I. ro = I. rotundatum
C. st = C. striatus	I. cr = I. cretaceum
C. hu = C. hughesii	O. po = O. porifera
P. no = P. notensis	C. st = C. striatoconus
F. wo = F. wonthaggiensis	P. in = P. infusorioides
C. au = C. australiensis	R. wa = R. watheroensis

## Hydrocarbon shows/tests legend

Gas show (weak)
Gas show (strong)
Gas zone
Oil show (weak)
Oil show (strong)
Oil zone
Oil/gas show (weak)
Oil/gas show (strong)
Oil fluorescence
CO <sub>2</sub> zone
RFT test



Due to erratic deviations pipe failures proved serious problems. When it got stuck at 1952m the bit was being pulled from 2302m. The well was abandoned prior to reaching basement.