

CHAMPION-1

Location Offshore Otway Basin
 Latitude 38 32 33.5S
 Longitude 142 23 17.86E

Water Depth = 53 m
 Total Depth Drilled (KB) = 1882 m
 KB Elevation = 25.3 m amsl
 Seismic line reference OM94-203, sp 1151

Completed August, 1995 by BHP Petroleum
 Status = Plugged & abandoned
 Lithostratigraphy by Geoff Geary (1998)
 Lithological interpretation by Natalya Liberman (1998)
 Palynology by Partridge, 1997
 Produced by the Basin Studies Group 07-Apr-98



Lithological legend

Carbonate Lithotypes		Siliciclastic Lithotypes		Others	
Limestone	Conglomerate	l'bedded sandstone & mudstone	Coal	Others	
Limestone, sandy	Sandstone, pebbly	Siltstone	Extrusive rocks		
Limestone, dolomitic	Sandstone	Siltstone, carbonaceous	Mafic sills		
Dolomite	Sandstone, carbonaceous	Mudstone (shale)	Plutonic rocks		
Dolomite, calcareous	Sandstone, argillaceous	Mudstone, carbonaceous	Metamorphic rocks		
Marl	Sandstone, glauconitic	Mudstone, calcareous			
	"Greensand"	Claystone			

Palynological scheme legend

SPORE-POLLEN:		DINOFLAGELLATES:	
T. be = T. bellus	C. in = C. incompositum	C. in = C. incompositum	
P. tu = P. tuberculatus	D. he = D. heterophlycta	D. he = D. heterophlycta	
N. as = N. asperus	A. hy = A. hyperacantha	A. hy = A. hyperacantha	
P. as = P. asperopolus	A. ho = A. homomorphom	A. ho = A. homomorphom	
M. di = M. diversus	E. cr = E. crassitabulata	E. cr = E. crassitabulata	
L. ba = L. balmei	T. ev = T. evittii	T. ev = T. evittii	
F. lo = F. longus	M. dr = M. druggii	M. dr = M. druggii	
T. li = T. lilliei	I. ko = I. korojenense	I. ko = I. korojenense	
N. se = N. senectus	X. au = X. australe	X. au = X. australe	
T. ap = T. apoxyxinus	N. ac = N. aceras	N. ac = N. aceras	
P. ma = P. mawsonii	I. cr = I. cretaceum	I. cr = I. cretaceum	
H. un = H. uniforma (A. di = A. distocaratus)	O. po = O. porifera	O. po = O. porifera	
P. pa = P. pannosus	C. st = C. striatoconus	C. st = C. striatoconus	
C. pa = C. paradoxa	P. in = P. infusorioides	P. in = P. infusorioides	
C. st = C. striatus			
C. hu = C. hughesii			
P. no = P. notensis			
F. wo = F. wonthaggiensis			
C. au = C. australiensis			
R. wa = R. watheroensis			

Hydrocarbon shows legend

	Gas show (weak)
	Gas show (strong)
	Gas well
	Oil show (weak)
	Oil show (strong)
	Oil well
	Oil/gas show (weak)
	Oil/gas show (strong)
	Oil fluorescence

Palynological environments legend

non mar. - non marine environ.	marg. mar. - marginal marine
lac. - lacustrine environment	nearshore - nearshore marine
estu. - estuarine	offshore - offshore marine

Pristane/Phytane Ratio legend

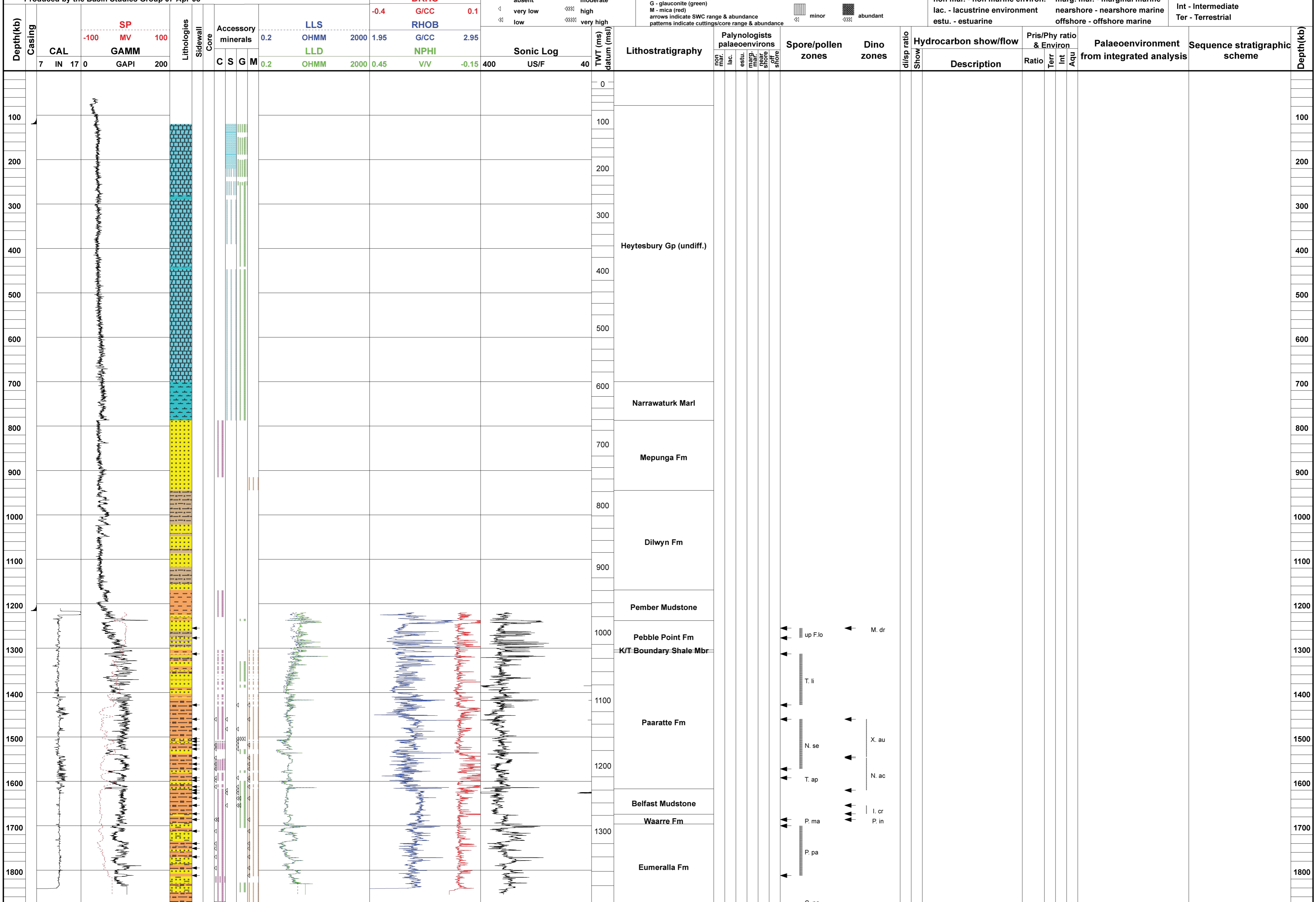
Aqu - Aqueous, lacustrine or marine
Int - Intermediate
Ter - Terrestrial

S/W core - recovered

absent	moderate
very low	high
low	very high

Accessory minerals legend

C - carbonaceous debris (magenta)	trace	common
S - shell debris (blue)	minor	abundant
G - glauconite (green)		
M - mica (red)		



Depth(kb)	Casing	CAL		SP		Lithologies	Sidewall	Core	Accessory minerals				DRHO				Sonic Log	TWT (ms)	Lithostratigraphy	Palynologists palaeoenvironments	Spore/pollen zones	Dino zones	di/sp ratio	Hydrocarbon show/flow	Pristane/Phy ratio & Environ			Palaeoenvironment	Sequence stratigraphic scheme	Depth(kb)
		7	IN	17	0				MV	100	C	S	G	M	0.2	OHMM									2000	1.95	G/C/C			

