

BURONG_1

Location: GIPPSLAND BASIN
 Latitude: -38.31066667 S
 Longitude: 147.1976944 E

Total Depth Drilled (KB) = 1259.8 m
 KB Elevation = 39.3 m amsl
 Seismic line reference: GHG85A-16/573

Completed Nov. 1998 by Hartogen Ltd
 Status = Plugged & abandoned

Lithostratigraphy from Burong-1 WCR
 Lithological interpretation from Burong-1 WCR
 Palynology by A. Partridge 1996

Produced by the Basin Studies Group 09-July-1996
 L.A. Knight & N. Novosell



Lithological legend

Carbonate Lithotypes	Siliciclastic Lithotypes	Others
Limestone	Conglomerate	Extrusive rocks
Limestone, sandy	Sandstone, pebbly	Mafic sills
Limestone, dolomitic	Sandstone	Plutonic rocks
Dolomite	Sandstone, calcareous	Metamorphic rocks
Dolomite, calcareous	Sandstone, argillaceous	
Marl	Sandstone, glauconitic	
	"Greensand"	
		l'bedded sandstone & mudstone
		Siltstone
		Mudstone (shale)
		Mudstone, calcareous
		Claystone
		Coal

N.B. Not all lithological patterns in the legend have been used in this wellsheet.

Accessory minerals legend

C - carbonaceous debris
 P - pyrite
 G - glauconite
 M - mica

Arrowheads indicate SWC range & abundance
 Patterns indicate cuttings/core range & abundance

trace	common
minor	abundant

Pristane/Phytane Legend

< 1.5 Anoxic - Subaqueous (lacustrine or marine)
 1.5 - 3.0 Trans - Transitional environment
 > 3.0 Oxidic - Subaerial environment

Palynological scheme legend

SPORE-POLLEN:

T. be = T. bellus
 P. tu = P. tuberculatus
 N. as = N. asperus
 P. as = P. asperopolus
 M. di = M. diversus
 L. ba = L. balmei
 F. lo = F. longus
 T. li = T. lilliei
 N. se = N. senectus
 T. ap = T. apoxyxinus
 P. ma = P. mawsonii
 H. un = H. uniforma (A. di = A. distocarinaratus)
 P. pa = P. pannosus
 C. pa = C. paradoxa
 C. st = C. striatosa
 C. hu = C. hugesii
 P. no = P. notensis
 F. wo = F. wonthaggiensis
 C. au = C. australiensis
 R. wa = R. watheroensis

DINOFLAGELLATES:

C. in = C. incompositum
 D. he = D. heterophlycta
 A. hy = A. hyperacantha
 A. ho = A. homomorphom
 E. cr = E. crassitabulata
 T. ev = T. evittii
 M. dr = M. druggii
 I. ko = I. korojenense
 X. au = X. australis
 N. ac = N. aceras
 I. ro = I. rotundatum
 I. cr = I. crataceum
 O. po = O. porifera
 C. st = C. striatoconus
 P. in = P. infusorioides

N.B. Not all palynological zones in the legend have been used in this wellsheet.

Palynologists' environments legend

nm - non marine
 lac - lacustrine
 est - estuarine

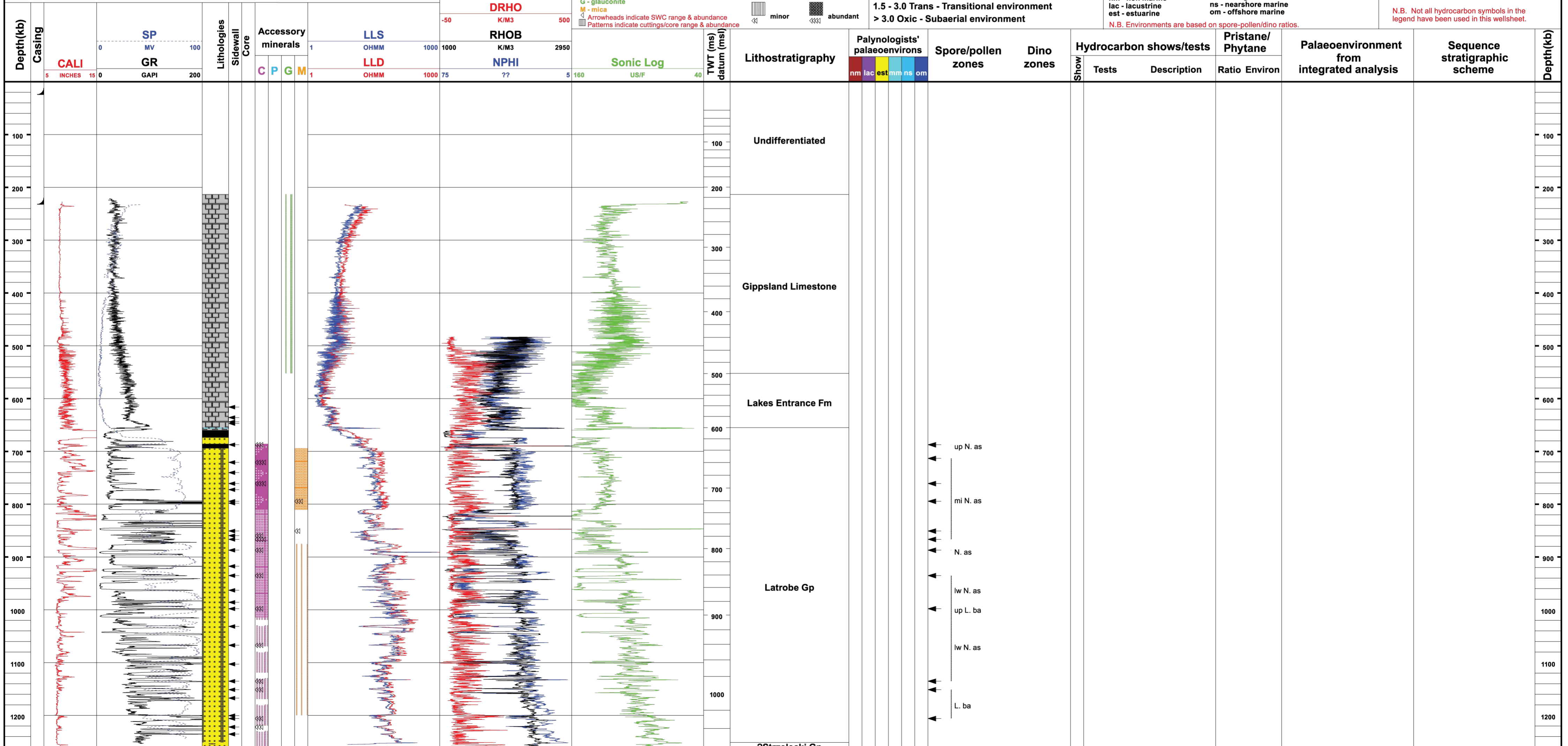
mm - marginal marine
 ns - nearshore marine
 om - offshore marine

N.B. Environments are based on spore-pollen/dino ratios.

Hydrocarbon shows/tests legend

- Gas show (weak)
- Gas show (strong)
- Gas zone
- Oil show (weak)
- Oil show (strong)
- Oil zone
- Oil/gas show (weak)
- Oil/gas show (strong)
- Oil fluorescence
- CO₂ zone
- RFT test

N.B. Not all hydrocarbon symbols in the legend have been used in this wellsheet.



?Strzelecki Cp