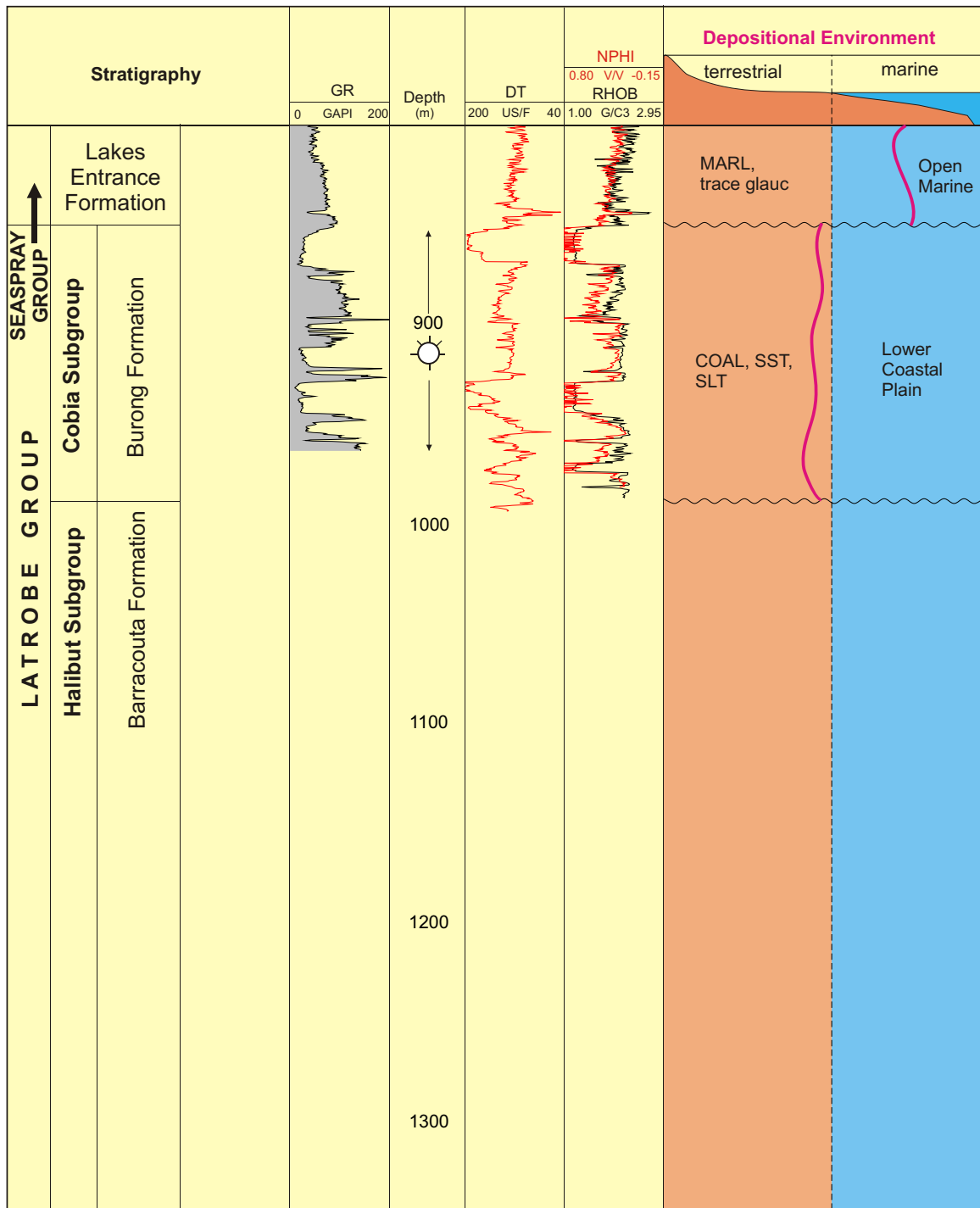


# Broadbill-1



No palynological analysis undertaken. Electric logs were not run over the basal 360 m section of the well due to difficult hole conditions. Cuttings descriptions over this section are regarded as poor, consequently DPI feels it is not possible to accurately delineate formation tops and lithologies below 994 mKB.

TD: 1345 mKB  
KB: 32 m