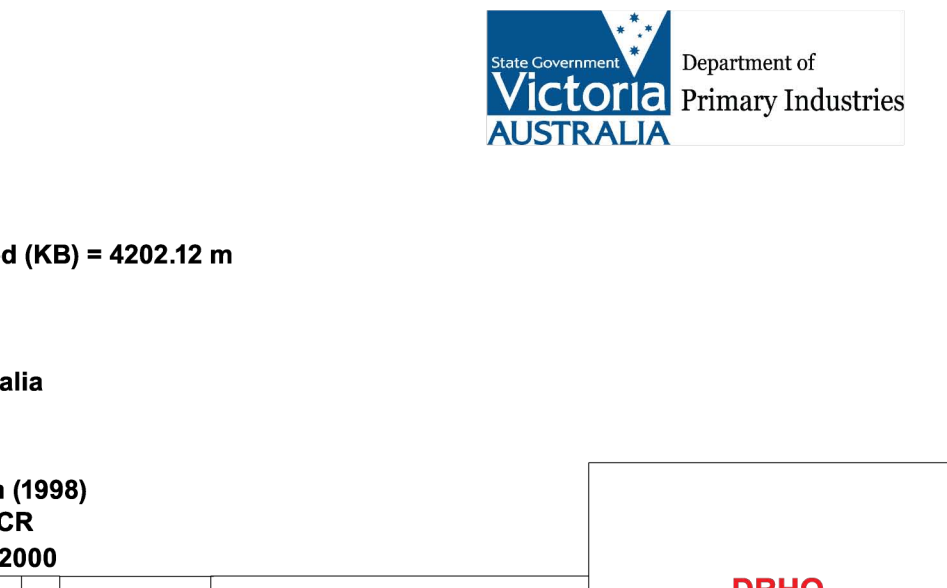


BRIDGEWATER BAY-1
 Location: Offshore Otway Basin
 Latitude: 38 32 25.96 S
 Longitude: 141 21 47.94 E

Water Depth = 109 m
 Total Depth Drilled (KB) = 4200 m; Depth logged (KB) = 4202.12 m
 KB Elevation = 22 m amsl
 Seismic line reference: OH91B-309, sp 2160

Completed December 9, 1983 by Phillips Australia
 Status = Plugged & abandoned

Lithostratigraphy by Geoff Geary (1998)
 Lithological interpretation by Natalia Liberman (1998)
 Palynology by A. D. Partridge (1996, 1997) & WCR
 Produced by the Basin Studies Group 04-Jun-2000



Lithological legend

Carbonate Lithotypes
 Limestone
 Limestone, sandy
 Limestone, dolomitic
 Dolomite
 Dolomite, calcareous
 Marl

Siliciclastic Lithotypes
 Conglomerate
 Sandstone, pebbly
 Sandstone
 Sandstone, calcareous
 Sandstone, argillaceous
 Sandstone, glauconitic
 "Greensand"

Others
 Bedded sandstone & mudstone
 Siltstone
 Mudstone (shale)
 Mudstone, calcareous
 Claystone
 Coal

Extrusive rocks
 Mafic sills
 Plutonic rocks
 Metamorphic rocks

N.B. Not all lithological patterns in the legend have been used in this wellsheet.

Palynological scheme legend

SPORE-POLLEN:
 T. be = T. bellus
 P. lu = P. lubriculatus
 N. as = N. asperus
 P. as = P. asperopolus
 M. di = M. diversus
 L. ba = L. baileyi
 F. lo = F. longus
 T. li = T. lillii
 N. se = N. senectus
 T. ap = T. apoxyximus
 P. ma = P. masonii
 H. un = H. uniformis (A. di = A. distocarinatus)
 P. pa = P. pamosus
 C. pa = C. paradoxus
 C. st = C. stratus
 C. hu = C. hughesii
 P. no = P. notensis
 F. wo = F. worthaggenis
 C. au = C. australensis
 R. wa = R. wathercoensis

DINOFLAGELLATES:
 W. th = W. thompsonae
 C. in = C. incompositum
 H. ta = H. tasmanianense
 D. ho = D. heterophlyctis
 A. hy = A. hyperacantha
 A. ho = A. homomorphum
 E. cr = E. crassitabulata
 T. ev = T. evittii
 P. py = P. pyriferum
 M. dr = M. druggii
 I. ko = I. koozemansense
 X. au = X. australis
 N. ac = N. aceras
 L. ro = L. rotundatum
 I. cr = I. cretaceum
 O. po = O. porifera
 C. st = C. striatoceras
 P. in = P. infusorioides

N.B. Not all palynological zones in the legend have been used in this wellsheet.

Hydrocarbon shows/tests legend

Gas show (weak)
 Gas show (strong)
 Gas zone
 Oil show (weak)
 Oil show (strong)
 Oil zone
 Oil/gas show (weak)
 Oil/gas show (strong)
 Oil fluorescence
 CO₂ zone
 RFT test

N.B. Not all hydrocarbon symbols in the legend have been used in this wellsheet.

Accessory minerals legend

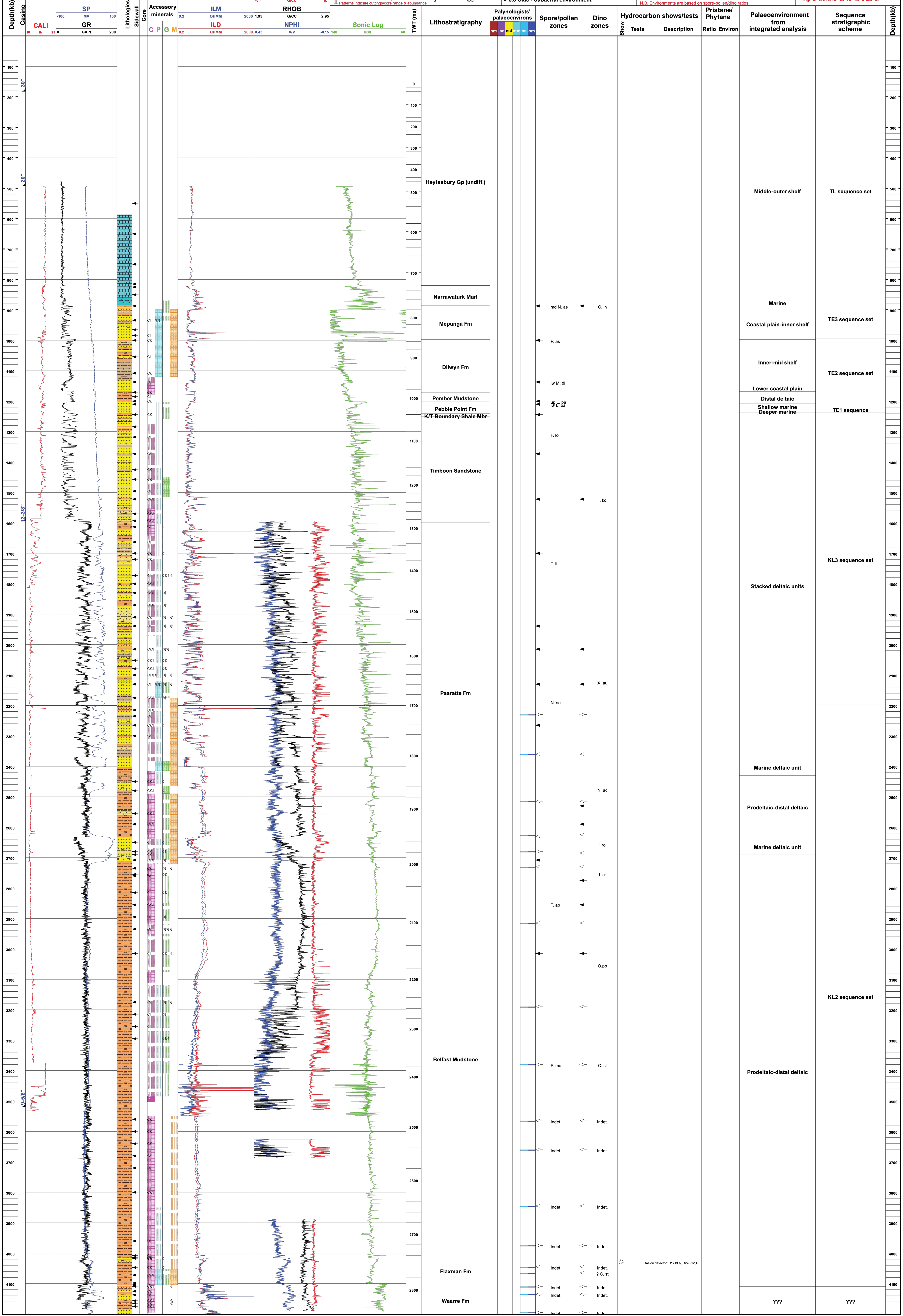
C - carbonaceous debris
 P - pyrite
 G - glauconite
 M - mica

trace
 common
 minor
 abundant

Patterns indicate cuttings/core range & abundance
 Arrowheads indicate SWC range & abundance
 Patterns indicate cuttings/core range & abundance

Pristane/Phytane Legend

< 1.5 Anoxic - Subaqueous (lacustrine or marine)
 1.5 - 3.0 Trans - Transitional environment
 > 3.0 Oxid - Subaerial environment



Gas on detector: C1=13%, C2=0.12%